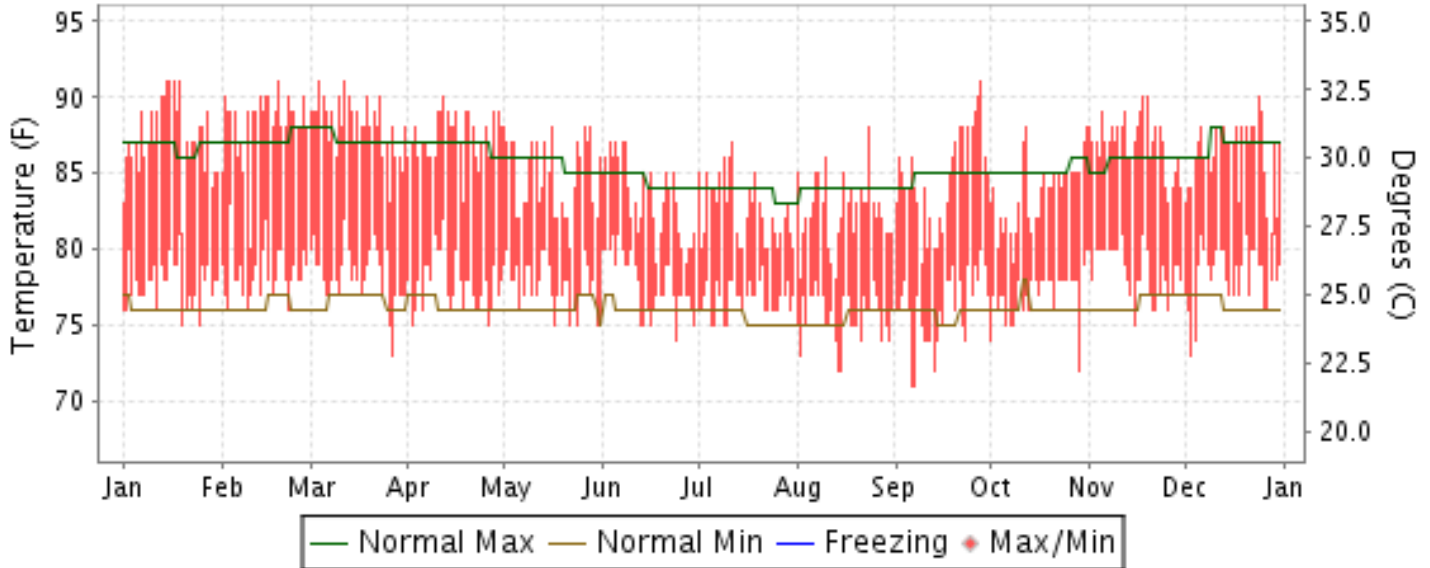




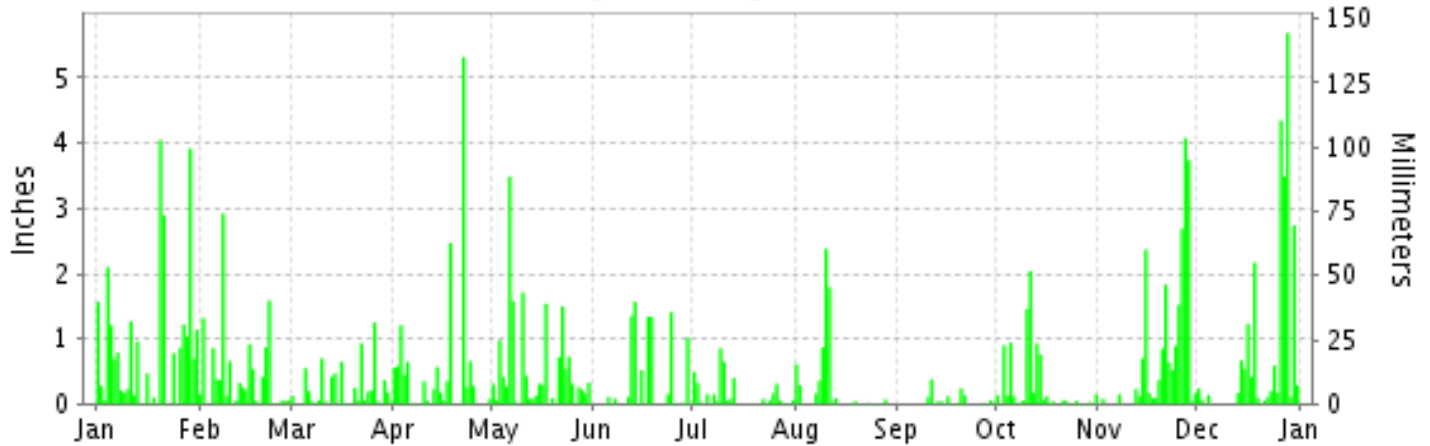
2015 LOCAL CLIMATOLOGICAL DATA ANNUAL SUMMARY WITH COMPARATIVE DATA

ISSN 0198-4357

PAGO PAGO, AMERICAN SAMOA (NSTU) Daily Max/Min Temperature



Daily Precipitation



I CERTIFY THAT THIS IS AN OFFICIAL PUBLICATION OF THE NATIONAL OCEANIC AND ATMOSPHERIC ADMINISTRATION, AND IS COMPILED FROM RECORDS ON FILE AT THE NATIONAL CLIMATIC DATA CENTER.

NATIONAL
OCEANIC AND
ATMOSPHERIC ADMINISTRATION

NATIONAL
ENVIRONMENTAL SATELLITE, DATA
AND INFORMATION SERVICE

NATIONAL CENTERS for
ENVIRONMENTAL INFORMATION (NCEI)
ASHEVILLE, NORTH CAROLINA

Thomas R. Karl
DIRECTOR
NCEI

METEOROLOGICAL DATA FOR 2015

PAGO PAGO (NSTU)

LATITUDE: 14° 19'S LONGITUDE: 170° 42'W ELEVATION (FT): GRND: 12 BARO: 15 TIME ZONE: 165 W MER (UTC -11) WBAN: 61705

ELEMENT		JAN	FEB	MAR	APR	MAY	JUN	JUL	AUG	SEP	OCT	NOV	DEC	YEAR	
TEMPERATURE °F	MEAN DAILY MAXIMUM	87.3	88.3	88.2	87.4	84.8	83.3	82.5	82.5	84.7	83.7	87.0	86.2	85.5	
	HIGHEST DAILY MAXIMUM	91	91	91	90	88	87	87	88	91	88	90	90	91	
	DATE OF OCCURRENCE	19+	19	12+	12	28+	08+	12	24	28	31+	19+	24	SEP 28	
	MEAN DAILY MINIMUM	77.7	78.4	78.3	77.7	77.6	77.7	76.7	75.5	76.1	77.0	78.6	78.3	77.5	
	LOWEST DAILY MINIMUM	75	76	73	75	75	74	75	72	71	72	75	73	71	
	DATE OF OCCURRENCE	25+	22+	27	26+	31+	24	10+	15+	07+	29	15	03	SEP 07+	
	AVERAGE DRY BULB	82.5	83.3	83.2	82.5	81.2	80.5	79.6	79.0	80.4	80.3	82.8	82.3	81.5	
	MEAN WET BULB	78.4		78.5	77.7	77.4	76.1	74.9	73.6	75.7	76.1	78.4	77.7		
	MEAN DEW POINT	76.6		76.8	76.0	76.0	74.3	72.5	71.1	73.7	74.4	76.8	75.9		
	NUMBER OF DAYS WITH:														
	MAXIMUM >= 90°	6	7	7	1	0	0	0	0	2	0	2	1	26	
	MAXIMUM <= 32°	0	0	0	0	0	0	0	0	0	0	0	0	0	
MINIMUM <= 32°	0	0	0	0	0	0	0	0	0	0	0	0	0		
MINIMUM <= 0°	0	0	0	0	0	0	0	0	0	0	0	0	0		
H/C	HEATING DEGREE DAYS	0	0	0	0	0	0	0	0	0	0	0	0	0	
	COOLING DEGREE DAYS	552	520	573	533	510	472	462	442	469	485	541	541	6100	
RH	MEAN (PERCENT)	84	82	83	82	85	82	80	78	82	84	84	83	82	
	HOUR 01 LST	89	88	88	87	86	84	82	81	86	87	88	86	86	
	HOUR 07 LST	84	84	85	84	87	83	82	80	83	85	84	83	84	
	HOUR 13 LST	76	75	74	75	82	79	77	73	74	79	77	77	77	
	HOUR 19 LST	85	82	84	84	86	84	81	80	84	85	86	84	84	
W/O	NUMBER OF DAYS WITH:														
	HEAVY FOG(VISBY <= 1/4 MI)	0	0	0	0	0	0	0	0	0	0	0	0	0	
	THUNDERSTORMS	9	4	2	5	3	1	0	1	0	0	5	1	31	
PR	MEAN STATION PRESS. (IN.)	29.73		29.75	29.83	29.85	29.86	29.91	29.89	29.90	29.88	29.79	29.75		
	MEAN SEA-LEVEL PRESS. (IN.)	29.74		29.76	29.84	29.86	29.87	29.92	29.90	29.91	29.89	29.79	29.76		
WINDS	RESULTANT SPEED (MPH)	1.1	3.6	1.2	5.4	9.4	13.3	14.7	12.6	12.5	14.0	9.5	7.7	8.4	
	RES. DIR. (TENS OF DEGS.)	04	07	03	11	11	12	13	12	12	12	10	11	12	
	MEAN SPEED (MPH)	5.6		5.2	8.1	11.9	15.1	15.9	14.4	13.5	15.1	12.4	10.8		
	PREVAIL.DIR.(TENS OF DEGS.)	33	09	09	09	10	10	13	12	12	12	10	11	10	
	MAXIMUM 2-MINUTE WIND														
	SPEED (MPH)	35	25	18	23	35	31	29	30	26	30	36	28	36	
	DIR. (TENS OF DEGS.)	34	03	08	17	10	09	14	13	11	09	09	09	09	
	DATE OF OCCURRENCE	31	01	05	18	21	13	23	02	19	15	26	27	NOV 26	
	MAXIMUM 3-SECOND WIND:														
SPEED (MPH)															
DIR. (TENS OF DEGS.)															
DATE OF OCCURRENCE															
PRECIPITATION	WATER EQUIVALENT:														
	TOTAL (IN.)	26.87	12.22	6.86	14.35	16.59	9.07	3.99	6.75	1.20	8.30	21.34	23.53	151.07	
	GREATEST 24-HOUR (IN.)	6.41	3.05	1.29	5.32	4.78	2.63	1.22	3.09	0.45	3.23	7.20	7.46	7.46	
	DATE OF OCCURRENCE	20-21	07-08	26-27	22	06-07	17-18	09-10	09-10	10-11	10-11	27-28	27-28	DEC 27-28	
	NUMBER OF DAYS WITH:														
	PRECIPITATION 0.01	26	23	24	22	27	16	20	15	12	25	21	21	252	
PRECIPITATION 0.10	23	16	14	15	21	10	9	7	5	12	18	18	168		
PRECIPITATION 1.00	10	3	1	3	5	6	0	2	0	2	6	6	44		
SNOWFALL	SNOW,ICE PELLETS,HAIL														
	TOTAL (IN.)														
	GREATEST 24-HOUR (IN.)														
	DATE OF OCCURRENCE														
	MAXIMUM SNOW DEPTH (IN.)														
DATE OF OCCURRENCE															
NUMBER OF DAYS WITH:															
SNOWFALL >= 1.0															

NORMALS, MEANS, AND EXTREMES

PAGO PAGO (NSTU)

LATITUDE: 14° 19'S LONGITUDE: 170° 42'W ELEVATION (FT): GRND: 12 BARO: 15 TIME ZONE: 165 W MER (UTC -11) WBAN: 61705

	ELEMENT	POR	JAN	FEB	MAR	APR	MAY	JUN	JUL	AUG	SEP	OCT	NOV	DEC	YEAR
TEMPERATURE °F	NORMAL DAILY MAXIMUM	30	87.6	88.0	88.1	87.5	86.2	85.0	84.2	84.3	85.3	85.8	86.6	87.4	86.3
	MEAN DAILY MAXIMUM	49	87.2	87.5	87.7	87.1	85.8	84.8	83.9	84.0	85.1	85.6	86.3	86.9	86.0
	HIGHEST DAILY MAXIMUM	56	95	96	95	95	93	91	91	92	92	94	95	94	96
	YEAR OF OCCURRENCE		1998	1998	1998	1998	2000	1995	2002	2002	2002	2001	1998	2001	FEB 1998
	MEAN OF EXTREME MAXS.	49	90.2	90.4	90.4	90.0	88.9	87.7	87.1	87.3	88.2	88.8	89.6	90.1	89.1
	NORMAL DAILY MINIMUM	30	77.3	77.5	77.5	77.3	77.3	76.9	76.3	76.3	76.7	76.9	77.3	77.3	77.1
	MEAN DAILY MINIMUM	49	76.8	76.9	76.9	76.6	76.6	76.6	75.9	75.7	76.1	76.6	76.8	76.8	76.5
	LOWEST DAILY MINIMUM	56	67	67	67	68	66	64	62	64	63	67	67	67	62
	YEAR OF OCCURRENCE		1965	1965	1965	1979	1974	1965	1964	1979	1970	1973	1964	1964	JUL 1964
	MEAN OF EXTREME MINS.	49	73.2	73.9	73.4	72.9	71.9	71.7	70.6	70.5	71.0	72.2	72.7	72.8	72.2
	NORMAL DRY BULB	30	82.5	82.7	82.8	82.4	81.7	80.9	80.3	80.3	81.0	81.4	82.0	82.3	81.7
	MEAN DRY BULB	49	82.0	82.2	82.3	81.9	81.2	80.7	79.9	79.9	80.6	81.1	81.6	80.2	81.1
	MEAN WET BULB	31	77.6	78.0	77.9	77.8	77.0	76.2	75.2	75.2	75.9	76.8	77.5	77.7	76.9
	MEAN DEW POINT	31	76.9	77.1	77.2	77.2	76.1	75.3	74.2	74.3	75.0	75.8	76.5	76.9	76.0
	NORMAL NO. DAYS WITH: MAXIMUM >= 90	30	4.4	4.8	5.3	2.9	1.0	0.1	0.2	0.1	0.4	0.7	2.1	3.3	25.3
	MAXIMUM <= 32	30	0.0	0.0	0.0	0.0	0.0	0.0	0.0	0.0	0.0	0.0	0.0	0.0	0.0
	MINIMUM <= 32	30	0.0	0.0	0.0	0.0	0.0	0.0	0.0	0.0	0.0	0.0	0.0	0.0	0.0
MINIMUM <= 0	30	0.0	0.0	0.0	0.0	0.0	0.0	0.0	0.0	0.0	0.0	0.0	0.0	0.0	
H/C	NORMAL HEATING DEG. DAYS	30	0	0	0	0	0	0	0	0	0	0	0	0	0
	NORMAL COOLING DEG. DAYS	30	541	497	552	522	519	479	473	474	480	507	508	538	6090
RH	NORMAL (PERCENT)	30	83	83	83	83	82	81	79	80	80	82	82	82	82
	HOURLY 01 LST	30	88	88	88	88	87	85	83	83	85	86	86	88	86
	HOURLY 07 LST	30	88	88	89	89	87	85	83	84	84	84	84	85	86
	HOURLY 13 LST	30	75	75	75	76	76	76	74	74	74	75	76	75	75
	HOURLY 19 LST	30	82	82	82	84	84	82	80	81	81	82	82	82	82
S	PERCENT POSSIBLE SUNSHINE	42	45	47	47	42	34	35	40	44	51	44	46	47	44
W/O	MEAN NO. DAYS WITH: HEAVY FOG(VISBY <= 1/4 MI)	48	0.0	0.0	0.0	0.0	0.0	0.0	0.0	0.0	0.0	0.0	0.0	0.0	0.0
	THUNDERSTORMS	48	3.0	2.9	3.2	3.3	2.8	1.2	0.6	0.6	1.0	2.5	3.7	3.5	28.3
CLOUDINESS	MEAN: SUNRISE-SUNSET (OKTAS)	39	6.6	6.6	6.2	6.2	6.1	5.7	5.7	5.6	5.5	6.1	6.3	6.4	6.1
	MIDNIGHT-MIDNIGHT (OKTAS)	38	6.2	6.2	5.9	5.9	5.8	5.4	5.7	5.5	5.5	5.9	6.1	6.2	5.9
	MEAN NO. DAYS WITH: CLEAR	39	0.5	0.5	1.0	1.0	0.9	1.6	1.6	1.8	1.8	1.1	0.7	1.1	13.6
	PARTLY CLOUDY	39	9.7	9.4	11.8	12.0	13.5	13.9	14.6	15.1	14.0	13.1	10.9	10.1	148.1
	CLOUDY	39	20.8	18.5	18.6	17.1	16.7	14.6	14.2	13.6	13.5	16.2	17.9	19.1	200.8
PR	MEAN STATION PRESSURE(IN)	31	29.76	29.77	29.80	29.82	29.85	29.87	29.88	29.89	29.89	29.86	29.81	29.76	29.83
	MEAN SEA-LEVEL PRES. (IN)	31	29.77	29.78	29.81	29.83	29.86	29.88	29.90	29.90	29.90	29.87	29.82	29.77	29.84
WINDS	MEAN SPEED (MPH)	31	9.5	9.5	8.7	9.3	11.1	13.2	13.8	13.5	13.7	12.3	11.0	10.3	11.3
	PREVAIL.DIR.(TENS OF DEGS)	3	32	09	09	09	10	11	11	12	10	10	10	11	10
	MAXIMUM 2-MINUTE: SPEED (MPH)	36	48	63	37	35	35	43	33	33	38	35	77	81	81
	DIR. (TENS OF DEGS)		03	03	03	03	10	00	09	01	00	01	12	02	02
	YEAR OF OCCURRENCE		2004	1990	1996	1994	2015	1995	2013	1995	1988	1986	2013	1991	DEC 1991
	MAXIMUM 3-SECOND SPEED (MPH)	29	115	107	59	59	47	59	49	45	49	43	47	109	115
	DIR. (TENS OF DEGS)		00	0N	0N	00	00	0N	00	0S	00	00	00	0S	00
	YEAR OF OCCURRENCE		2004	1990	1997	1994	1996	1997	1992	1994	1988	1986	1991	1991	JAN 2004
PRECIPITATION	NORMAL (IN)	30	14.48	12.66	11.66	11.02	10.62	5.86	6.47	6.30	7.63	10.11	11.30	14.52	122.63
	MAXIMUM MONTHLY (IN)	56	28.31	32.66	31.84	28.35	29.10	13.32	19.59	18.14	25.29	29.59	25.67	27.40	32.66
	YEAR OF OCCURRENCE		2010	1968	1961	1992	1999	2005	1962	2013	1972	1996	1978	2009	FEB 1968
	MINIMUM MONTHLY (IN)	56	4.65	2.02	4.01	0.74	1.61	1.97	0.72	0.29	0.63	2.10	1.36	2.25	0.29
	YEAR OF OCCURRENCE		1968	1998	1976	1998	1983	1992	1974	1989	1987	1975	1965	1995	AUG 1989
	MAXIMUM IN 24 HOURS (IN)	56	10.34	9.01	6.48	10.79	11.35	7.09	8.65	6.18	10.28	8.62	7.76	8.97	11.35
	YEAR OF OCCURRENCE		1997	1968	1981	1975	1999	2013	1962	1978	1972	1996	2012	1970	MAY 1999
	NORMAL NO. DAYS WITH: PRECIPITATION >= 0.01	30	23.9	21.4	23.8	22.1	20.1	18.4	19.3	17.8	17.9	20.9	20.8	23.1	249.5
	PRECIPITATION >= 1.00	30	4.1	3.9	3.2	3.4	2.9	1.4	1.9	1.6	2.4	3.1	3.6	4.6	36.1
	SNOWFALL	NORMAL (IN)	30	0.0	0.0	0.0	0.0	0.0	0.0	0.0	0.0	0.0	0.0	0.0	0.0
MAXIMUM MONTHLY (IN)		14	0.0	0.0	0.0	0.0	0.0	0.0	0.0	0.0	0.0	0.0	0.0	0.0	0.0
YEAR OF OCCURRENCE															
MAXIMUM IN 24 HOURS (IN)		51	0.0	0.0	0.0	0.0	0.0	0.0	0.0	0.0	0.0	0.0	0.0	0.0	0.0
YEAR OF OCCURRENCE															
MAXIMUM SNOW DEPTH (IN)		43	0	0	0	0	0	0	0	0	0	0	0	0	0
YEAR OF OCCURRENCE															
NORMAL NO. DAYS WITH: SNOWFALL >= 1.0	30	0.0	0.0	0.0	0.0	0.0	0.0	0.0	0.0	0.0	0.0	0.0	0.0	0.0	

PRECIPITATION (inches) 2015 PAGO PAGO (NSTU)

YEAR	JAN	FEB	MAR	APR	MAY	JUN	JUL	AUG	SEP	OCT	NOV	DEC	ANNUAL
1986	24.88	9.47	6.88	18.83	12.33	5.69	8.79	5.05	17.67	8.87	8.82	22.60	149.88
1987	17.05	15.01	10.09	8.05	5.51	4.02	3.86	6.29	0.63	3.87	3.83	16.42	94.63
1988	8.34	9.32	12.76	10.57	9.76	6.15	9.42	3.98	6.78	9.21	16.10	24.39	126.78
1989	18.37	14.69	8.20	13.60	7.51	5.43	9.56	0.29	1.35	9.78	17.88	14.12	120.78
1990	8.87	22.54	9.90	13.01	3.52	6.31	4.82	2.45	3.68	9.68	11.25	9.30	105.33
1991	13.67	21.01	9.02	9.45	11.25	7.86	9.16	4.36	3.40	9.63	10.20	22.55	131.56
1992	15.40	12.44	13.76	28.35	10.67	1.97	5.22	6.33	6.95	6.59	22.79	8.94	139.41
1993	23.47	7.27	17.26	12.51	8.82	3.89	4.12	8.61	9.28	9.32	8.34	12.62	125.51
1994	10.37	6.78	10.96	22.65	18.96	3.80	15.68	11.83	11.56	17.26	15.52	16.69	162.06
1995	16.40	14.69	13.39	9.07	9.55	5.23	7.27	17.22	7.75	6.42	14.95	2.25	124.19
1996	11.93	11.84	11.12	7.48	10.87	6.65	3.45	1.38	10.52	29.59	6.86	10.75	122.44
1997	27.95	11.91	7.91	5.97	9.29	3.51	3.68	7.94	6.00	5.89	5.29	7.84	103.18
1998	10.64	2.02	12.70	0.74	1.64	4.72	1.42	1.59	4.30	6.31	3.22	10.46	59.76
1999	11.36	14.50	5.48	5.02	29.10	6.29	3.41	5.71	14.16	8.72	10.54	12.50	126.79
2000	13.43	13.54	18.24	4.85	13.40	7.93	3.34	3.21	6.77	11.08	9.04	10.41	115.24
2001	6.39	13.67	15.21	6.62	4.79	4.61	4.69	3.03	4.72	8.80	8.54	15.77	96.84
2002	7.42	4.85	12.56	17.84	11.20	5.92	10.42	5.90	1.62	11.87	15.26	7.94	112.80
2003	7.41	9.11	10.41	9.33	19.59	7.69	12.43	6.78	4.32	6.48	21.39	16.77	131.71
2004	12.31	13.65	13.60	7.40	5.11	3.76	7.11	2.67	4.95	11.52	4.00	9.68	95.76
2005	13.25	10.55	12.94	14.50	10.78	13.32	5.43	13.56	14.43	6.75	9.69	24.89	150.09
2006	23.87	29.28	8.50	5.15	7.86	5.07	8.27	8.75	15.83	9.75	16.09	21.63	160.05
2007	21.01	10.35	20.31	4.66	17.34	3.44	5.67	4.74	17.02	16.18	14.61	9.86	145.19
2008	22.15	4.90	10.08	12.89	19.83	12.00	4.46	3.59	6.13	3.23	11.87	18.51	129.64
2009	11.34	7.62	9.99	9.28	19.17	3.65	9.96	10.41	6.28	7.53	16.65	27.40	139.28
2010	28.31	15.83	4.99	10.33	6.61	5.05	8.30	4.32	9.68	15.33	9.15	12.34	130.24
2011	25.72	13.39	5.77	4.01	3.69	7.01	2.31	3.85	1.92	12.67	15.91	9.69	105.94
2012	8.14	11.76	14.00	8.41	12.15	6.13	5.84	3.19	12.74	4.99	18.35	8.14	113.84
2013	18.27	10.48	9.97	13.52	6.35	11.76	8.48	18.14	8.14	5.71	5.91	12.71	129.44
2014	19.54	11.65	6.95	14.29	7.84	8.22	18.48	3.22	2.60	2.68	13.76	16.68	125.91
2015	26.87	12.22	6.86	14.35	16.59	9.07	3.99	6.75	1.20	8.30	21.34	23.53	151.07
POR= 49 YRS	14.73	12.36	11.16	11.29	10.66	6.59	6.47	6.65	7.27	10.04	11.60	14.38	123.20

WBAN : 61705

AVERAGE TEMPERATURE (°F) 2015 PAGO PAGO (NSTU)

YEAR	JAN	FEB	MAR	APR	MAY	JUN	JUL	AUG	SEP	OCT	NOV	DEC	ANNUAL
1986	81.2	81.6	82.1	81.2	80.6	80.6	79.3	78.3	79.9	81.1	81.8	81.7	80.8
1987	81.7	82.5	82.3	82.1	80.4	78.5	78.3	78.2	79.7	80.4	81.8	82.2	80.7
1988	82.6	82.8	82.9	81.4	81.7	81.4	79.6	80.5	80.2	80.1	79.7	79.9	81.1
1989	79.7	80.5	81.3	80.7	80.5	80.1	78.7	79.7	81.7	81.1	80.5	80.4	80.4
1990	81.5	81.4	81.6	80.6	81.9	80.4	80.2	80.1	80.4	81.5	81.6	81.7	81.1
1991	81.5	82.0	82.6	82.6	81.0	80.6	81.1	80.8	80.5	81.1	82.1	81.5	81.5
1992	81.9	82.2	81.5	81.5	82.0	81.3	81.7	80.3	81.5	81.4	80.4	82.0	81.5
1993	81.7	81.9	81.5	81.9	81.2	79.9	78.3	80.0	79.7	80.3	82.5	83.5	81.0
1994	83.1	84.1	83.9	83.1	82.1	80.8	80.3	79.1	80.0	80.4	81.6	82.9	81.8
1995	83.0	83.1	83.5	82.7	82.7	83.6	82.4	81.7	81.7	82.0	82.8	83.2	82.7
1996	83.0	83.0	83.4	83.0	81.9	82.6	81.7	81.2	82.6	81.6	83.4	83.7	82.6
1997	82.4	83.6	82.7	83.9	82.6	80.9	81.7	80.6	81.9	83.7	83.8	84.5	82.7
1998	85.3	86.3	85.8	85.2	84.2	83.6	81.7	82.9	84.4	85.2	86.3	83.3	84.5
1999	81.6	81.9	81.9	82.9	80.2	80.7	81.0	80.8	81.2	81.4	82.7	83.6	81.7
2000	83.8	83.8	83.1	83.8	81.7	81.4	80.0	81.6	82.3	81.7	82.9	83.7	82.5
2001	84.2	83.4	83.4	83.3	83.2	82.8	81.5	82.3	82.1	82.4	83.4	83.2	82.9
2002	84.3	85.4	84.3	84.1	84.1	82.7	82.8	81.2	82.8	82.3	84.0	84.6	83.6
2003	85.4	83.8	84.6	82.9	82.8	80.7	80.6	79.3	81.8	82.5	81.7	82.5	82.4
2004	81.8	81.3	81.5	81.3	80.8	80.5	80.7	81.4	82.0	82.5	83.1	84.7	81.8
2005	84.0	84.7	84.6	83.6	82.1	80.8	80.4	80.8	81.9	82.6	83.6	82.5	82.6
2006	82.1	82.4	83.7	83.7	83.9	81.9	80.3	81.2	81.0	81.0	81.2	82.3	82.1
2007	83.2	83.6	83.5	84.2	82.5	83.5	82.9	83.2	83.0	83.1	83.7	83.5	83.3
2008	83.4	84.2	83.5	83.3	82.6	81.1	80.6	81.8	81.3	82.8	83.2	84.6	82.7
2009	85.0	85.4	85.2	85.4	82.0	81.1	80.6	79.7	80.3	81.2	81.3	81.4	82.4
2010	85.0	83.9	85.7	82.9	82.7	81.5	81.1	80.4	80.9	81.5	81.0	81.8	82.4
2011	80.9	80.2	81.8	82.4	81.3	81.2	81.7	80.1	81.0	81.5	80.8	81.7	81.2
2012	81.7	81.6	81.3	81.1	80.8	80.7	79.9	80.5	81.5	82.4	83.0	-0.8	74.5
2013	81.7	82.8	82.6	83.0	82.9	81.8	80.6	80.6	81.4	81.8	82.2	82.8	82.0
2014	81.7	83.2	82.8	81.7	81.7	80.9	79.3	80.0	82.1	83.3	81.5	82.3	81.7
2015	82.5	83.3	83.2	82.5	81.2	80.5	79.6	79.0	80.4	80.3	82.8	82.3	81.5
POR= 49 YRS	82.0	82.2	82.3	81.9	81.2	80.7	79.9	79.9	80.6	81.1	81.6	80.2	81.1

HEATING DEGREE DAYS (base 65°F) 2015 PAGO PAGO (NSTU)

YEAR	JUL	AUG	SEP	OCT	NOV	DEC	JAN	FEB	MAR	APR	MAY	JUN	TOTAL
1987-88	0	0	0	0	0	0	0	0	0	0	0	0	0
1988-89	0	0	0	0	0	0	0	0	0	0	0	0	0
1989-90	0	0	0	0	0	0	0	0	0	0	0	0	0
1990-91	0	0	0	0	0	0	0	0	0	0	0	0	0
1991-92	0	0	0	0	0	0	0	0	0	0	0	0	0
1992-93	0	0	0	0	0	0	0	0	0	0	0	0	0
1993-94	0	0	0	0	0	0	0	0	0	0	0	0	0
1994-95	0	0	0	0	0	0	0	0	0	0	0	0	0
1995-96	0	0	0	0	0	0	0	0	0	0	0	0	0
1996-97	0	0	0	0	0	0	0	0	0	0	0	0	0
1997-98	0	0	0	0	0	0	0	0	0	0	0	0	0
1998-99	0	0	0	0	0	0	0	0	0	0	0	0	0
1999-00	0	0	0	0	0	0	0	0	0	0	0	0	0
2000-01	0	0	0	0	0	0	0	0	0	0	0	0	0
2001-02	0	0	0	0	0	0	0	0	0	0	0	0	0
2002-03	0	0	0	0	0	0	0	0	0	0	0	0	0
2003-04	0	0	0	0	0	0	0	0	0	0	0	0	0
2004-05	0	0	0	0	0	0	0	0	0	0	0	0	0
2005-06	0	0	0	0	0	0	0	0	0	0	0	0	0
2006-07	0	0	0	0	0	0	0	0	0	0	0	0	0
2007-08	0	0	0	0	0	0	0	0	0	0	0	0	0
2008-09	0	0	0	0	0	0	0	0	0	0	0	0	0
2009-10	0	0	0	0	0	0	0	0	0	0	0	0	0
2010-11	0	0	0	0	0	0	0	0	0	0	0	0	0
2011-12	0	0	0	0	0	0	0	0	0	0	0	0	0
2012-13	0	0	0	0	0	0	0	0	0	0	0	0	0
2013-	0	0	0	0	0	0	0	0	0	0	0	0	0
2013-14	0	0	0	0	0	0	0	0	0	0	0	0	0
2014-15	0	0	0	0	0	0	0	0	0	0	0	0	0
2015-	0	0	0	0	0	0	0	0	0	0	0	0	0

WBAN : 61705

COOLING DEGREE DAYS (base 65°F) 2015 PAGO PAGO (NSTU)

YEAR	JAN	FEB	MAR	APR	MAY	JUN	JUL	AUG	SEP	OCT	NOV	DEC	TOTAL
1986	510	474	538	490	489	476	452	421	454	506	511	527	5848
1987	521	497	541	520	485	412	420	419	449	485	514	541	5804
1988	550	522	563	499	525	496	457	484	459	473	450	467	5945
1989	468	438	513	478	488	461	431	463	506	506	471	484	5707
1990	519	466	522	471	531	470	478	473	467	519	505	524	5945
1991	514	482	553	533	503	473	505	498	470	506	518	520	6075
1992	529	503	519	499	533	497	525	482	504	514	468	535	6108
1993	524	477	521	513	510	454	421	468	448	483	534	584	5937
1994	569	543	592	547	539	479	483	444	456	484	504	561	6201
1995	565	516	578	539	557	564	548	521	509	534	541	571	6543
1996	567	526	577	546	529	535	522	511	532	521	556	585	6507
1997	547	527	554	576	554	483	526	490	516	588	574	610	6545
1998	640	603	651	613	605	566	524	560	589	630	645	571	7197
1999	521	478	532	543	478	479	503	496	494	515	538	582	6159
2000	592	553	569	569	526	499	474	522	528	527	542	584	6485
2001	598	521	578	552	572	543	519	542	519	545	560	573	6622
2002	604	581	607	581	595	540	557	508	537	543	579	614	6846
2003	637	531	614	545	560	478	485	447	508	550	509	550	6414
2004	528	481	519	495	496	474	497	518	517	549	551	618	6243
2005	596	557	611	566	535	483	485	498	513	556	562	549	6511
2006	534	492	587	569	596	514	470	493	484	461	495	544	6239
2007	573	527	583	583	548	561	561	571	544	569	564	584	6768
2008	578	565	578	557	554	489	493	529	494	559	553	616	6565
2009	625	578	631	619	534	489	492	464	465	507	495	514	6413
2010	624	535	647	542	557	500	506	486	485	517	485	526	6410
2011	500	432	525	527	515	496	527	476	484	521	485	524	6012
2012	527	487	510	490	499	475	469	488	502	548	544	527	6066
2013	526	503	555	547	564	512	491	493	500	528	522	560	6301
2014	525	517	559	506	525	486	452	471	520	578	504	543	6186
2015	552	520	573	533	510	472	462	442	469	485	541	541	6100

SNOWFALL (inches) 2015 PAGO PAGO (NSTU)

YEAR	JUL	AUG	SEP	OCT	NOV	DEC	JAN	FEB	MAR	APR	MAY	JUN	TOTAL
1981-82	0.0	0.0	0.0	0.0	0.0	0.0	0.0	0.0	0.0	0.0	0.0	0.0	0.0
1982-83	0.0	0.0	0.0	0.0	0.0	0.0	0.0	0.0	0.0	0.0	0.0	0.0	0.0
1983-84	0.0	0.0	0.0	0.0	0.0	0.0	0.0	0.0	0.0	0.0	0.0	0.0	0.0
1984-85	0.0	0.0	0.0	0.0	0.0	0.0	0.0	0.0	0.0	0.0	0.0	0.0	0.0
1985-86	0.0	0.0	0.0	0.0	0.0	0.0	0.0	0.0	0.0	0.0	0.0	0.0	0.0
1986-87	0.0	0.0	0.0	0.0	0.0	0.0	0.0	0.0	0.0	0.0	0.0	0.0	0.0
1987-88	0.0	0.0	0.0	0.0	0.0	0.0	0.0	0.0	0.0	0.0	0.0	0.0	0.0
1988-89	0.0	0.0	0.0	0.0	0.0	0.0	0.0	0.0	0.0	0.0	0.0	0.0	0.0
1989-90	0.0	0.0	0.0	0.0	0.0	0.0	0.0	0.0	0.0	0.0	0.0	0.0	0.0
1990-91	0.0	0.0	0.0	0.0	0.0	0.0	0.0	0.0	0.0	0.0	0.0	0.0	0.0
1991-92	0.0	0.0	0.0	0.0	0.0	0.0	0.0	0.0	0.0	0.0	0.0	0.0	0.0
1992-93	0.0	0.0	0.0	0.0	0.0	0.0	0.0	0.0	0.0	0.0	0.0	0.0	0.0
1993-94	0.0	0.0	0.0	0.0	0.0	0.0	0.0	0.0	0.0	0.0	0.0	0.0	0.0
1994-95	0.0	0.0	0.0	0.0	0.0	0.0	0.0	0.0	0.0	0.0	0.0	0.0	0.0
1995-96	0.0	0.0	0.0	0.0	0.0	0.0	0.0	0.0	0.0	0.0	0.0	0.0	0.0
1996-97	0.0	0.0	0.0	0.0	0.0	0.0	0.0	0.0	0.0	0.0	0.0	0.0	0.0
1997-98	0.0	0.0	0.0	0.0	0.0	0.0	0.0	0.0	0.0	0.0	0.0	0.0	0.0
1998-99	0.0	0.0	0.0	0.0	0.0	0.0	0.0	0.0	0.0	0.0	0.0	0.0	0.0
1999-00	0.0	0.0	0.0	0.0	0.0	0.0	0.0	0.0	0.0	0.0	0.0	0.0	0.0
2000-01	0.0	0.0	0.0	0.0	0.0	0.0	0.0	0.0	0.0	0.0	0.0	0.0	0.0
2001-02	0.0	0.0	0.0	0.0	0.0	0.0	0.0	0.0	0.0	0.0	0.0	0.0	0.0
2002-03	0.0	0.0	0.0	0.0	0.0	0.0	0.0	0.0	0.0	0.0	0.0	0.0	0.0
2003-04	0.0	0.0	0.0	0.0	0.0	0.0	0.0	0.0	0.0	0.0	0.0	0.0	0.0
2004-05	0.0	0.0	0.0	0.0	0.0	0.0	0.0	0.0	0.0	0.0	0.0	0.0	0.0
2005-06	0.0	0.0	0.0	0.0	0.0	0.0	0.0	0.0	0.0	0.0	0.0	0.0	0.0
2006-07	0.0	0.0	0.0	0.0	0.0	0.0	0.0	0.0	0.0	0.0	0.0	0.0	0.0
2007-08	0.0	0.0	0.0	0.0	0.0	0.0	0.0	0.0	0.0	0.0	0.0	0.0	0.0
2008-09	0.0	0.0	0.0	0.0	0.0	0.0	0.0	0.0	0.0	0.0	0.0	0.0	0.0
2009-10	0.0	0.0	0.0	0.0	0.0	0.0	0.0	0.0	0.0	0.0	0.0	0.0	0.0
2010-	0.0	0.0	0.0	0.0	0.0	0.0	0.0	0.0	0.0	0.0	0.0	0.0	0.0
POR= 45 YRS	0.0	0.0	0.0	0.0	0.0	0.0	0.0	0.0	0.0	0.0	0.0	0.0	0.0

WBAN : 61705

REFERENCE NOTES :

<p>PAGE 1: THE TEMPERATURE GRAPH SHOWS NORMAL MAXIMUM AND NORMAL MINIMUM DAILY TEMPERATURES (SOLID CURVES) AND THE ACTUAL DAILY HIGH AND LOW TEMPERATURES (VERTICAL BARS).</p> <p>PAGE 2 AND 3: H/C INDICATES HEATING AND COOLING DEGREE DAYS. RH INDICATES RELATIVE HUMIDITY W/O INDICATES WEATHER AND OBSTRUCTIONS S INDICATES SUNSHINE. PR INDICATES PRESSURE. CLOUDINESS ON PAGE 3 IS THE SUM OF THE CEILOMETER AND SATELLITE DATA NOT TO EXCEED EIGHT EIGHTHS(OKTAS).</p> <p>GENERAL: T INDICATES TRACE PRECIPITATION, AN AMOUNT GREATER THAN ZERO BUT LESS THAN THE LOWEST REPORTABLE VALUE. + INDICATES THE VALUE ALSO OCCURS ON EARLIER DATES. BLANK ENTRIES DENOTE MISSING OR UNREPORTED DATA. ASOS INDICATES AUTOMATED SURFACE OBSERVING SYSTEM. PM INDICATES THE LAST DAY OF THE PREVIOUS MONTH. POR (PERIOD OF RECORD) BEGINS WITH THE JANUARY DATA MONTH AND IS THE NUMBER OF YEARS USED TO COMPUTE THE MEAN. INDIVIDUAL MONTHS WITHIN THE POR MAY BE MISSING. WHEN THE POR FOR A NORMAL IS LESS THAN 30 YEARS, THE NORMAL IS PROVISIONAL AND IS BASED ON THE NUMBER OF YEARS INDICATED. 0.* OR * INDICATES THE VALUE OR MEAN-DAYS-WITH IS BETWEEN 0.00 AND 0.05. CLOUDINESS FOR ASOS STATIONS DIFFERS FROM THE NON-ASOS OBSERVATION TAKEN BY A HUMAN OBSERVER. ASOS STATION CLOUDINESS IS BASED ON TIME-AVERAGED CEILOMETER DATA FOR CLOUDS AT OR BELOW 12,000 FEET CLEAR INDICATES 0 - 2 OKTAS, PARTLY CLOUDY INDICATES 3 - 6 OKTAS, AND CLOUDY INDICATES 7 OR 8 OKTAS.</p> <p>GENERAL CONTINUED: WIND DIRECTION IS RECORDED IN TENS OF DEGREES (2 DIGITS) CLOCKWISE FROM TRUE NORTH. "00" INDICATES CALM. "36" INDICATES TRUE NORTH. RESULTANT WIND IS THE VECTOR AVERAGE OF THE SPEED AND DIRECTION. AVERAGE TEMPERATURE IS THE SUM OF THE MEAN DAILY MAXIMUM AND MINIMUM TEMPERATURE DIVIDED BY 2. SNOWFALL DATA COMPRISE ALL FORMS OF FROZEN</p>	<p>PRECIPITATION, INCLUDING HAIL. A HEATING (COOLING) DEGREE DAY IS THE DIFFERENCE BETWEEN THE AVERAGE DAILY TEMPERATURE AND 65 F. DRY BULB IS THE TEMPERATURE OF THE AMBIENT AIR. DEW POINT IS THE TEMPERATURE TO WHICH THE AIR MUST BE COOLED TO ACHIEVE 100 PERCENT RELATIVE HUMIDITY. WET BULB IS THE TEMPERATURE THE AIR WOULD HAVE IF THE MOISTURE CONTENT WAS INCREASED TO 100 PERCENT RELATIVE HUMIDITY. ON JULY 1, 1996, THE NATIONAL WEATHER SERVICE BEGAN USING THE "METAR" OBSERVATION CODE THAT WAS ALREADY EMPLOYED BY MOST OTHER NATIONS OF THE WORLD. THE MOST NOTICEABLE DIFFERENCE IN THIS ANNUAL PUBLICATION WILL BE THE CHANGE IN UNITS FROM TENTHS TO EIGHTHS(OKTAS) FOR REPORTING THE AMOUNT OF SKY COVER. STATION HISTORY STOPPED WITH THE 2009 ANNUAL. IF YOU NEED STATION HISTORY INFORMATION GO TO "Historical Observing Metadata Repository", URL IS: http://www.ncdc.noaa.gov/homr/ SNOWFALL STOPPED MONTH & YEAR INDICATED ABOVE. NO FURTHER YEARS INCLUDED UNLESS RESTARTED.</p> <p>NOTE:</p> <p>The "Period of Record:(POR)" for all "averages" is based on "Summary of the Day First Order Station" and "Cooperative Summary of the Day" archives.</p>
---	--

2015 PAGO PAGO AMERICAN SAMOA (NSTU)

Pago Pago Airport is located on the southeastern coast of the island of Tutuila in the American Samoa group, approximately 2,600 miles south-southwest of Hawaii, 1,600 miles north-northeast of New Zealand, and 4,500 miles southwest of California. Tutuila is a long, narrow island lying southwest-northeast, with a land area of 76 square miles, a greatest length of just over 20 miles, and a width ranging from 1 to 2 miles in the eastern half and from 2 to 5 miles in the western. It is volcanic in origin, extremely mountainous, and nearly surrounded by a coral reef. The principal ridge extends the length of the island, reaching a maximum height of 2,141 feet, at Matafao peak, near the central portion of the long axis. Vegetation is moderately dense, with many coconut, banana, and other tropical fruit trees, grass, and low-growing brush. The orientation of Tutuila is such that winds from the east-northeast clockwise to south approach Pago Pago Airport directly from the ocean without being deflected by the terrain, while winds from other directions may be considerably disturbed by topography.

Samoa has a maritime climate with abundant rain and warm, humid days and nights. Rainfall, usually falling as showers, is about 125 inches a year at the airport, but varies greatly over small distances because of topography. Thus, Pago Pago, less than 4 miles north of the airport and at the head of a hill-encircled harbor open to the prevailing wind, receives nearly 200 inches a year. The crest of the range receives well above 250 inches. In most years, the airport records about 300 days with a trace or more of rain and about 175 with .1 inch or more.

The driest months are June through September (southern winter) and the wettest, December through March (southern summer). However, the seasonal rainfall may vary widely in individual years, and heavy showers and long rainy periods can occur in any month. Flooding rains are not unknown. Some of these have been associated with hurricanes and tropical storms, but they have occurred at other times as well.

June, July and August are the coolest months and January, February, and March, the warmest. Afternoon temperatures ordinarily reach the upper 80s in summer and the mid 80s in winter, while nighttime temperatures fall to the mid 70s in the summer and low 70s in winter. The highest temperatures recorded at the airport are in the low 90s and lowest near 60.

The prevailing winds throughout the year are the easterly trades. These tend to be more directly from the east in December through March, but predominantly from east-southeast and southeast during the rest of the year. The trade winds are also less prevalent in summer than in winter. As the foregoing suggests, the trades are interrupted more often in summer than in winter. These interruptions are sometimes associated with the proximity of small tropical storms, of bands of converging winds, or of low pressure systems higher in the atmosphere, all of which help make summer the rainy season. At other times, the absence of the trades is marked by periods of light and variable winds and by land and sea breezes. Westerly to northerly winds, in particular, are more frequent then. These are strong at times, but are often quite light, and may then reflect the nighttime drainage of cooled air from the mountains west and north of the airport.

Thunderstorms are less frequent than might be expected, considering the moistness and instability of the tropical air mass which usually overlies Samoa.

Station History

PAGO PAGO, AQ

NAME	Begin Date	End Date	Latitude	Longitude	Elevation Feet	Relocation	Platform
PAGO PAGO WSO AP	2007-10-02	Present	-14° 19'	-170° 42'	12		COOP
PAGO PAGO WSO AP	2004-04-01	2007-10-02	-14° 19'	-170° 42'	12	230 FT N	COOP
PAGO PAGO WSO AP	1966-04-01	2004-04-01	-14° 19'	-170° 43'	10		COOP

Element History

Element	Begin Date	End Date	Frequency	Time Of Observation	Equipment *	Equipment * Modifications	Equipment Exposure
EVAP	1985-10-04	2003-04-01	DAILY	2400	EVAP-C		
PRECIP	1966-04-01	1966-05-20	DAILY	0800	TB	RCRD	
PRECIP	1966-05-20	1981-06-01	DAILY	1900	TB	RCRD	
EVAP	2003-04-01	Present	DAILY	0700	EVAP-C		
TEMP	1966-05-20	1981-06-01	DAILY	1900			
EVAP	1966-05-20	1981-06-01	DAILY	1900	EVAP-C		
TEMP	2003-04-01	Present	DAILY	0700	HYGR		
PRECIP	2003-04-01	Present	HOURLY	2400	TB	RCRD	
PRECIP	1985-10-04	2003-04-01	DAILY	2400	TB	RCRD	
PRECIP	2003-04-01	Present	DAILY	0700	TB	RCRD	
TEMP	1981-06-01	1985-10-04	DAILY	2400			
PRECIP	1985-10-04	2003-04-01	HOURLY	2400	TB	RCRD	
TEMP	1985-10-04	2003-04-01	DAILY	2400			
PRECIP	1981-06-01	1985-10-04	DAILY	2400	TB	RCRD	
EVAP	1966-04-01	1966-05-20	DAILY	0800	EVAP-C		
EVAP	1981-06-01	1985-10-04	DAILY	2400	EVAP-C		
TEMP	1966-04-01	1966-05-20	DAILY	0800			

* For explanation of codes and abbreviations see Station Metadata link below.

Other Station Information can be found at:

ASOS Implementation by NWS: <http://www.nws.noaa.gov/ops2/Surface/asosimplementation.htm>

Station Metadata website: <http://www.ncdc.noaa.gov/homr>

INQUIRES/COMMENTS CALL: (828) 271-4800, option 2

Fax Number : (828) 271-4876

TDD : (828) 271-4010

Email : ncdc.orders@noaa.gov

NOAA/National Centers for Environmental Information

Attn: User Engagement & Services Branch

151 Patton Avenue

Asheville, NC 28801-5001

Visit our Web Site for other weather data: www.ncdc.noaa.gov