

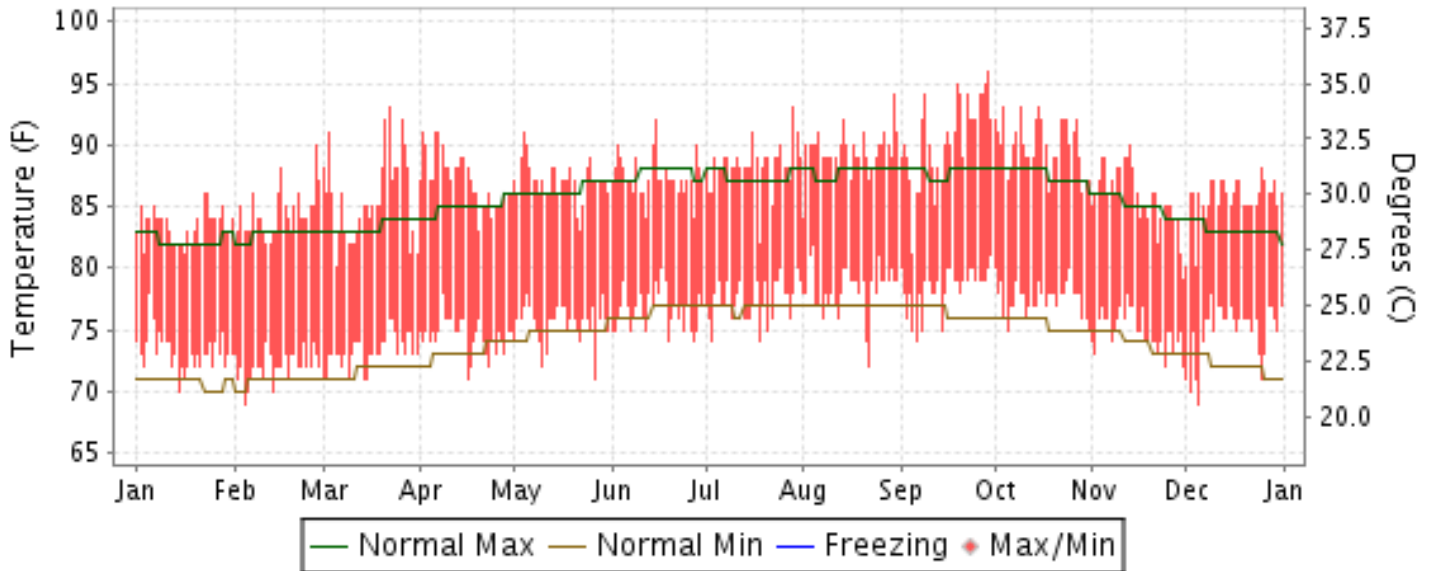


2013 LOCAL CLIMATOLOGICAL DATA ANNUAL SUMMARY WITH COMPARATIVE DATA

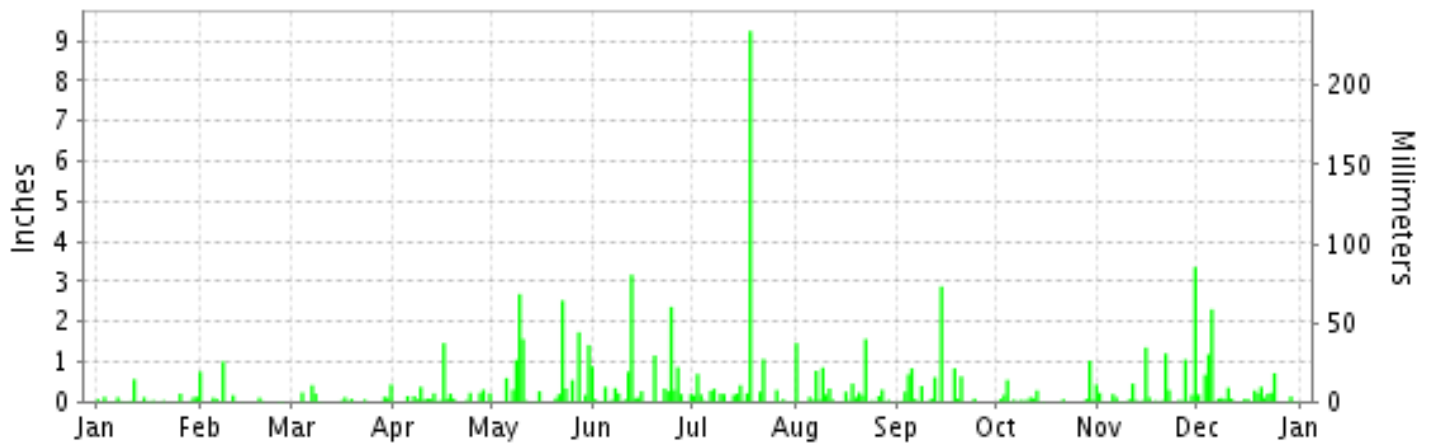
ISSN 0198-5566

SAN JUAN, PUERTO RICO (TJSJ)

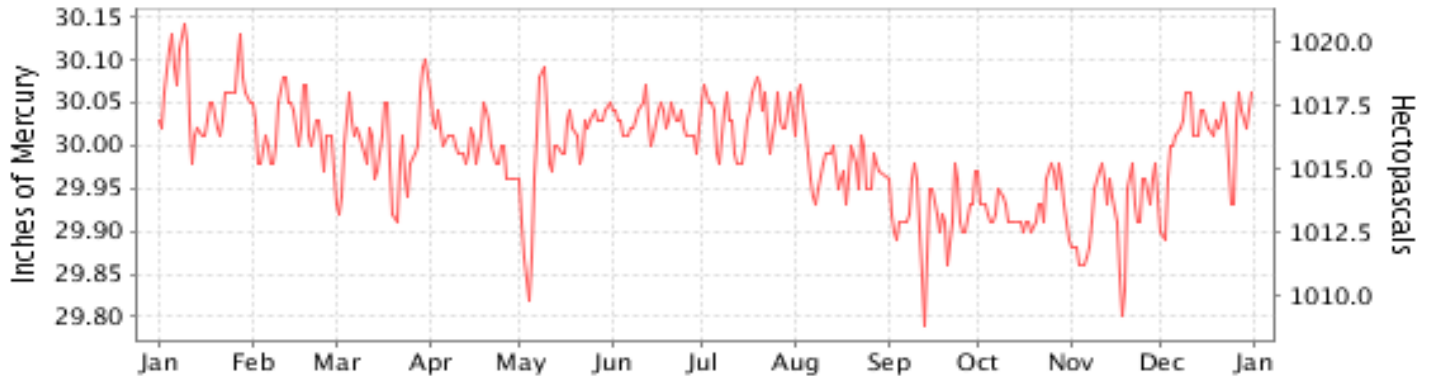
Daily Max/Min Temperature



Daily Precipitation



Daily Station Pressure



I CERTIFY THAT THIS IS AN OFFICIAL PUBLICATION OF THE NATIONAL OCEANIC AND ATMOSPHERIC ADMINISTRATION, AND IS COMPILED FROM RECORDS ON FILE AT THE NATIONAL CLIMATIC DATA CENTER.

NATIONAL
OCEANIC AND
ATMOSPHERIC ADMINISTRATION

NATIONAL
ENVIRONMENTAL SATELLITE, DATA
AND INFORMATION SERVICE

NATIONAL
CLIMATIC DATA CENTER
ASHEVILLE, NORTH CAROLINA

Thomas R. Karl
DIRECTOR
NATIONAL CLIMATIC DATA CENTER

METEOROLOGICAL DATA FOR 2013

SAN JUAN (TJSJ)

LATITUDE:
18° 25'N

LONGITUDE:
66° 0'W

ELEVATION (FT):
GRND: 9 BARO: 10

TIME ZONE:
ATLANTIC (UTC -4)

WBAN: 11641

ELEMENT		JAN	FEB	MAR	APR	MAY	JUN	JUL	AUG	SEP	OCT	NOV	DEC	YEAR	
TEMPERATURE °F	MEAN DAILY MAXIMUM	83.5	84.4	85.7	87.1	87.0	87.4	88.3	89.5	90.4	89.9	85.7	85.5	87.0	
	HIGHEST DAILY MAXIMUM	86	90	93	91	91	92	93	94	96	93	90	88	96	
	DATE OF OCCURRENCE	23+	27	22	07+	04	15	29	30	29	15+	13	25	SEP 29	
	MEAN DAILY MINIMUM	73.2	72.0	73.2	74.5	75.6	76.6	77.4	78.3	78.4	77.6	74.9	74.9	75.6	
	LOWEST DAILY MINIMUM	70	69	71	71	71	74	74	72	74	75	72	69	69	
	DATE OF OCCURRENCE	14	04	15+	16	27	27+	03+	22	06	31+	30+	05	DEC 05	
	AVERAGE DRY BULB	78.3	78.2	79.5	80.8	81.3	82.0	82.8	83.9	84.4	83.8	80.3	80.2	81.3	
	MEAN WET BULB	71.5	70.8	70.8	73.0	75.2	76.1	76.5	77.0	76.9	76.0	73.8	74.0	74.3	
	MEAN DEW POINT	68.4	67.1	66.6	69.6	72.8	73.9	74.1	74.4	74.1	73.0	71.2	71.3	71.4	
	NUMBER OF DAYS WITH:														
	MAXIMUM >= 90°	0	1	5	5	2	4	4	16	19	18	1	0	75	
	MAXIMUM <= 32°	0	0	0	0	0	0	0	0	0	0	0	0	0	
MINIMUM <= 32°	0	0	0	0	0	0	0	0	0	0	0	0	0		
MINIMUM <= 0°	0	0	0	0	0	0	0	0	0	0	0	0	0		
H/C	HEATING DEGREE DAYS	0	0	0	0	0	0	0	0	0	0	0	0	0	
	COOLING DEGREE DAYS	421	375	455	484	513	516	559	593	589	589	469	482	6045	
RH	MEAN (PERCENT)	74	72	68	72	78	80	77	75	74	74	76	76	75	
	HOUR 02 LST	79	80	76	81	85	86	83	83	82	82	83	82	82	
	HOUR 08 LST	75	71	66	69	74	79	75	74	73	70	75	76	73	
	HOUR 14 LST	65	61	59	62	72	72	68	67	63	64	68	70	66	
	HOUR 20 LST	74	74	71	76	81	83	81	78	76	77	78	76	77	
W/O	NUMBER OF DAYS WITH:														
	HEAVY FOG(VISBY <= 1/4 MI)	0	0	0	0	0	0	1	0	0	0	0	1	2	
	THUNDERSTORMS	0	0	0	0	11	4	9	5	3	8	1	2	43	
PR	MEAN STATION PRESS. (IN.)	30.06	30.02	30.00	30.00	30.00	30.03	30.03	29.98	29.91	29.93	29.92	30.01	29.99	
	MEAN SEA-LEVEL PRESS. (IN.)	30.06	30.02	30.00	30.01	30.00	30.03	30.03	29.98	29.93	29.94	29.93	30.02	30.00	
WINDS	RESULTANT SPEED (MPH)	8.3	7.5	5.3	8.7	7.0	9.2	8.3	8.0	4.1	3.8	5.2	7.9	6.9	
	RES. DIR. (TENS OF DEGS.)	08	08	06	08	08	08	08	08	09	09	08	08	08	
	MEAN SPEED (MPH)	9.0	8.1	7.5	9.6	8.0	9.7	8.9	8.5	5.7	5.1	6.6	8.7	8.0	
	PREVAIL.DIR.(TENS OF DEGS.)	08	08	06	08	08	08	08	08	08	09	07	08	08	
	MAXIMUM 2-MINUTE WIND														
	SPEED (MPH)	30	25	25	28	35	25	26	28	30	26	23	31	35	
	DIR. (TENS OF DEGS.)	09	07	08	08	06	09	07	07	27	33	08	08	06	
	DATE OF OCCURRENCE	08	19	31	18	27	19	18	09	19	04	30	23	MAY 27	
	MAXIMUM 3-SECOND WIND:														
SPEED (MPH)	38	33	31	35	40	30	40	39	38	37	32	38	40		
DIR. (TENS OF DEGS.)	09	08	02	07	06	09	07	08	26	32	09	07	07		
DATE OF OCCURRENCE	08	19	29	17	27	26	18	09	19	04	27	23	JUL 18		
PRECIPITATION	WATER EQUIVALENT:														
	TOTAL (IN.)	1.78	2.32	1.92	4.19	14.54	11.29	14.18	7.42	7.61	3.24	9.02	7.62	85.13	
	GREATEST 24-HOUR (IN.)	0.57	1.01	0.61	1.48	3.60	3.84	9.42	1.58	2.88	1.07	3.36	3.33	9.42	
	DATE OF OCCURRENCE	12	08	07-08	15-16	08-09	11-12	17-18	22-23	14	28-29	30	04-05	JUL 17-18	
	NUMBER OF DAYS WITH:														
PRECIPITATION 0.01	23	10	14	21	20	22	22	26	17	18	23	24	240		
PRECIPITATION 0.10	7	5	7	10	15	16	15	14	8	7	11	14	129		
PRECIPITATION 1.00	0	1	0	1	6	3	2	2	1	1	4	2	23		
SNOWFALL	SNOW,ICE PELLETS,HAIL														
	TOTAL (IN.)	0.0	0.0	0.0	0.0	0.0	0.0	0.0	0.0	0.0	0.0	0.0	0.0	0.0	
	GREATEST 24-HOUR (IN.)	0.0	0.0	0.0	0.0	0.0	0.0	0.0	0.0	0.0	0.0	0.0	0.0	0.0	
	DATE OF OCCURRENCE	0	0	0	0	0	0	0	0	0	0	0	0	0	
	NUMBER OF DAYS WITH:														
SNOWFALL >= 1.0	0	0	0	0	0	0	0	0	0	0	0	0	0		

NORMALS, MEANS, AND EXTREMES SAN JUAN (TJSJ)

LATITUDE:
18° 25'N

LONGITUDE:
66° 0'W

ELEVATION (FT):
GRND: 9 BARO: 10

TIME ZONE:
ATLANTIC (UTC -4)

WBAN: 11641

	ELEMENT	POR	JAN	FEB	MAR	APR	MAY	JUN	JUL	AUG	SEP	OCT	NOV	DEC	YEAR
TEMPERATURE °F	NORMAL DAILY MAXIMUM	30	83.2	83.7	84.9	86.2	87.5	88.9	88.7	89.2	89.2	88.4	85.9	83.9	86.6
	MEAN DAILY MAXIMUM	58	83.1	83.6	84.7	85.8	87.2	88.6	88.4	88.8	88.9	88.3	85.9	83.9	86.4
	HIGHEST DAILY MAXIMUM	59	92	96	96	97	96	97	95	97	97	98	96	94	98
	YEAR OF OCCURRENCE		1983	1983	1983	1983	1980	1988	1981	1980	1981	1981	1981	1989	OCT 1981
	MEAN OF EXTREME MAXS.	58	87.1	87.9	89.8	91.2	92.1	92.7	91.8	92.3	92.9	92.6	90.1	87.5	90.7
	NORMAL DAILY MINIMUM	30	72.0	72.0	72.9	74.4	76.3	77.7	78.1	78.2	77.8	76.9	75.2	73.4	75.4
	MEAN DAILY MINIMUM	58	70.8	70.7	71.5	73.0	74.7	76.2	76.7	76.8	76.4	75.6	74.0	72.3	74.1
	LOWEST DAILY MINIMUM	59	61	62	60	64	66	66	69	70	69	67	66	66	63
	YEAR OF OCCURRENCE		1962	1968	1957	1968	1962	1957	1959	1956	1960	1959	1969	1964	MAR 1957
	MEAN OF EXTREME MINS.	58	66.4	66.8	67.4	69.3	71.3	73.1	73.3	73.6	73.4	72.5	70.5	68.4	70.5
	NORMAL DRY BULB	30	77.6	77.9	78.9	80.3	81.9	83.3	83.4	83.7	83.5	82.6	80.6	78.7	81.0
	MEAN DRY BULB	58	76.9	77.1	78.1	79.4	80.9	82.4	82.6	82.9	82.7	82.0	80.0	78.1	80.3
	MEAN WET BULB	30	70.6	70.0	70.3	72.0	74.4	75.7	76.1	76.4	76.0	75.4	73.9	71.9	73.6
	MEAN DEW POINT	30	69.4	68.7	68.9	70.7	73.2	74.6	75.1	75.4	75.1	74.5	72.9	70.8	72.4
	NORMAL NO. DAYS WITH: MAXIMUM >= 90	30	0.2	0.5	1.8	3.3	5.9	8.3	6.0	9.9	10.0	6.9	1.3	0.4	54.5
	MAXIMUM <= 32	30	0.0	0.0	0.0	0.0	0.0	0.0	0.0	0.0	0.0	0.0	0.0	0.0	0.0
MINIMUM <= 32	30	0.0	0.0	0.0	0.0	0.0	0.0	0.0	0.0	0.0	0.0	0.0	0.0	0.0	
MINIMUM <= 0	30	0.0	0.0	0.0	0.0	0.0	0.0	0.0	0.0	0.0	0.0	0.0	0.0	0.0	
H/C	NORMAL HEATING DEG. DAYS	30	0	0	0	0	0	0	0	0	0	0	0	0	0
	NORMAL COOLING DEG. DAYS	30	391	360	431	459	524	549	570	580	555	547	466	423	5855
RH	NORMAL (PERCENT)	30	76	74	73	73	76	77	77	78	78	79	79	77	76
	HOURLY 02 LST	30	81	80	79	80	83	83	83	84	84	85	84	82	82
	HOURLY 08 LST	30	81	79	76	74	76	77	78	79	78	79	80	80	78
	HOURLY 14 LST	30	64	62	61	61	65	65	66	67	67	67	68	66	65
	HOURLY 20 LST	30	76	74	73	74	76	77	78	78	78	79	79	77	77
S	PERCENT POSSIBLE SUNSHINE	50	68	70	76	71	64	65	69	68	62	64	59	62	67
W/O	MEAN NO. DAYS WITH: HEAVY FOG(VISBY <= 1/4 MI)	50	0.0	0.0	0.0	0.0	0.1	0.0	0.0	0.1	0.0	0.0	0.0	0.0	0.2
	THUNDERSTORMS	58	0.3	0.3	0.3	1.3	4.4	5.2	5.4	6.4	8.2	7.8	3.0	0.9	43.5
CLOUDINESS	MEAN: SUNRISE-SUNSET (OKTAS)	41	3.9	4.0	3.9	4.3	5.1	4.8	4.6	4.5	4.8	4.7	4.4	4.2	4.4
	MIDNIGHT-MIDNIGHT (OKTAS)	32	3.5	3.6	3.6	3.7	4.5	4.1	4.2	4.0	4.2	4.0	4.0	3.8	3.9
	MEAN NO. DAYS WITH: CLEAR	41	9.0	7.5	9.4	7.5	3.7	4.4	5.2	5.5	4.0	4.7	5.4	6.7	73.0
	PARTLY CLOUDY	41	18.0	16.3	17.2	16.4	15.5	15.8	17.2	17.4	16.6	17.0	17.6	18.2	203.2
	CLOUDY	41	4.0	4.4	4.4	6.1	11.8	9.8	8.6	8.1	9.4	9.4	6.9	6.1	89.0
PR	MEAN STATION PRESSURE(IN)	30	29.99	29.99	29.97	29.88	29.94	29.98	29.96	29.92	29.90	29.85	29.90	29.90	29.93
	MEAN SEA-LEVEL PRES. (IN)	30	30.03	30.03	30.01	29.98	29.98	30.01	30.03	29.98	29.94	29.92	29.93	30.00	29.99
WINDS	MEAN SPEED (MPH)	30	7.7	8.1	8.3	8.2	8.0	8.6	9.3	8.1	6.7	6.0	6.9	7.5	7.8
	PREVAIL.DIR.(TENS OF DEGS)	37	08	07	07	07	09	09	09	09	07	09	07	08	09
	MAXIMUM 2-MINUTE: SPEED (MPH)	17	31	30	32	31	35	32	33	45	79	37	33	31	79
	DIR. (TENS OF DEGS)		06	06	07	06	06	07	10	04	05	04	36	08	05
	YEAR OF OCCURRENCE		2006	2009	1997	2002	2013	1998	2009	2011	1998	2001	1999	2013	SEP 1998
	MAXIMUM 3-SECOND SPEED (MPH)	17	41	43	37	39	46	45	45	59	93	44	39	39	93
	DIR. (TENS OF DEGS)		32	06	07	08	07	10	08	03	07	08	36	02	07
	YEAR OF OCCURRENCE		2008	2009	2004	2008	2009	2003	2011	2011	1998	2012	1999	2003	SEP 1998
PRECIPITATION	NORMAL (IN)	30	3.76	2.39	1.95	4.68	5.90	4.41	5.07	5.46	5.77	5.59	6.35	5.02	56.35
	MAXIMUM MONTHLY (IN)	59	11.07	6.69	9.27	15.00	14.99	13.60	14.18	18.56	15.15	15.06	15.96	16.81	18.56
	YEAR OF OCCURRENCE		2010	1982	2012	2005	1965	2011	2013	2011	1996	1970	1979	1981	AUG 2011
	MINIMUM MONTHLY (IN)	59	0.61	0.20	0.58	0.08	0.44	0.16	1.12	1.83	1.73	1.17	1.91	0.68	0.08
	YEAR OF OCCURRENCE		1978	1983	2008	1997	1972	1974	1994	1987	1987	1979	1980	1963	APR 1997
	MAXIMUM IN 24 HOURS (IN)	59	5.68	2.75	3.91	7.20	4.74	3.87	9.42	5.91	8.84	5.04	7.07	8.40	9.42
	YEAR OF OCCURRENCE		2010	1989	1969	1988	1986	2011	2013	2011	1989	1985	1979	1981	JUL 2013
	NORMAL NO. DAYS WITH: PRECIPITATION >= 0.01	30	17.6	13.9	12.2	13.3	15.7	14.4	18.6	18.5	17.4	17.7	19.6	19.6	198.5
	PRECIPITATION >= 1.00	30	0.5	0.3	0.3	1.2	1.7	1.1	1.1	1.2	1.1	1.3	1.3	1.0	12.1
SNOWFALL	NORMAL (IN)	30	0.0	0.0	0.0	0.0	0.0	0.0	0.0	0.0	0.0	0.0	0.0	0.0	0.0
	MAXIMUM MONTHLY (IN)	59	0.0	0.0	0.0	0.0	0.0	0.0	0.0	0.0	T	0.0	0.0	0.0	T
	YEAR OF OCCURRENCE										1989				SEP 1989
	MAXIMUM IN 24 HOURS (IN)	59	0.0	0.0	0.0	0.0	0.0	0.0	0.0	0.0	T	0.0	0.0	0.0	T
	YEAR OF OCCURRENCE										1989				SEP 1989
	MAXIMUM SNOW DEPTH (IN)	57	0	0	0	0	0	0	0	0	0	0	0	0	0
YEAR OF OCCURRENCE															
NORMAL NO. DAYS WITH: SNOWFALL >= 1.0	30	0.0	0.0	0.0	0.0	0.0	0.0	0.0	0.0	0.0	0.0	0.0	0.0	0.0	

PRECIPITATION (inches) 2013 SAN JUAN (TJSJ)

YEAR	JAN	FEB	MAR	APR	MAY	JUN	JUL	AUG	SEP	OCT	NOV	DEC	ANNUAL
1984	1.96	3.13	0.82	0.28	3.75	6.85	2.66	6.04	3.16	5.10	5.65	4.69	44.09
1985	2.80	2.40	1.84	1.02	5.95	0.29	2.85	4.33	5.44	11.10	4.54	2.80	45.36
1986	2.18	1.13	1.61	8.93	12.80	1.52	1.94	5.19	1.98	8.54	5.87	3.59	55.28
1987	2.16	1.20	5.17	8.88	12.17	7.07	3.26	2.48	1.73	2.70	7.49	7.69	62.00
1988	3.83	2.27	1.76	10.37	6.06	1.45	4.02	11.31	5.49	4.12	5.68	4.07	60.43
1989	2.96	6.05	3.39	2.63	4.88	2.97	5.54	7.88	14.83	2.09	4.95	2.50	60.67
1990	4.56	3.02	3.14	1.05	2.44	4.32	5.76	3.42	2.23	8.65	5.33	5.03	48.95
1991	2.57	2.26	1.99	1.76	3.23	2.77	3.30	1.94	5.00	1.84	6.16	2.71	35.53
1992	4.03	1.19	1.47	2.12	8.76	5.55	4.38	4.00	5.35	1.74	11.98	4.72	55.29
1993	2.35	0.51	0.78	6.55	4.48	5.46	7.34	3.01	4.36	2.78	4.34	3.00	44.96
1994	3.39	1.69	1.38	2.75	1.69	4.49	3.58	1.83	5.30	3.52	8.32	3.04	40.98
1995	3.69	3.57	1.29	2.98	9.47	4.66	4.93	5.15	7.17	6.11	3.09	3.84	55.95
1996	5.74	2.44	2.06	5.04	2.39	6.02	7.64	6.94	15.15	2.55	7.98	3.29	67.24
1997	4.01	4.58	1.83	0.08	3.38	0.98	4.75	6.86	3.56		6.82	1.02	
1998	7.29	3.72	3.48	4.14	3.67	3.25	7.18	7.80	10.47	6.82	6.74	7.99	72.55
1999	3.24	2.74	0.75	2.53	3.99	5.53	5.81	7.34	5.82	7.38	9.84	6.15	61.12
2000	2.37	1.01	0.78	1.20	4.72	2.97	3.67	9.52	2.96	3.73	3.76	3.08	39.77
2001	2.91	3.27	1.59	2.27	5.90	2.01	3.57	6.44	5.05	5.00	6.25	11.79	56.05
2002	3.33	0.96	1.13	4.85	3.24	1.82	5.16	6.70	7.45	4.81	2.65	4.59	46.69
2003	4.59	2.22	1.48	9.37	1.67	3.43	4.70	5.65	4.50	4.83	11.26	5.25	58.95
2004	1.96	2.60	3.17	3.07	9.38	7.02	6.78	3.49	9.81	6.59	5.82	4.66	64.35
2005	5.31	0.87	T	15.00	8.58	5.13	8.51	7.14	3.85	11.94	7.31	3.64	77.28
2006	6.49	1.74	1.57	10.06	4.86	4.74	8.92	4.26	1.78	11.25	5.71	4.50	65.88
2007	2.55	1.10	2.23	9.77	1.52	4.04	4.58	3.44	6.71	4.96	6.00	7.95	54.85
2008	6.96	1.98	0.58	4.84	5.00	5.52	1.75	3.99	10.02	5.30	4.18	4.58	54.70
2009	2.49	3.32	3.21	2.80	5.28	10.37	4.80	8.57	6.43	3.62	12.14	1.83	64.86
2010	11.07	1.08	3.08	3.45	12.52	9.23	8.52	8.40	8.86	7.86	7.96	7.47	89.50
2011	2.71	2.19	1.27	2.80	10.89	13.60	11.08	18.56	6.61	5.51	4.74	8.18	88.14
2012	3.73	1.96	9.27	5.30	5.28	0.16	6.82	7.48	2.12	4.67	3.09	5.29	55.17
2013	1.78	2.32	1.92	4.19	14.54	11.29	14.18	7.42	7.61	3.24	9.02	7.62	85.13
POR= 58 YRS	3.40	2.21	2.28	4.14	6.07	4.73	5.16	5.86	5.74	5.58	6.12	4.92	56.21

WBAN : 11641

AVERAGE TEMPERATURE (°F) 2013 SAN JUAN (TJSJ)

YEAR	JAN	FEB	MAR	APR	MAY	JUN	JUL	AUG	SEP	OCT	NOV	DEC	ANNUAL
1984	78.1	77.8	80.2	81.8	81.1	82.4	82.6	82.6	82.2	81.3	78.7	77.3	80.5
1985	76.1	77.3	76.7	78.3	80.4	83.0	83.5	83.4	81.7	79.6	79.0	76.8	79.7
1986	75.5	76.0	77.4	79.0	79.1	81.6	82.0	82.2	82.5	81.4	79.1	77.7	79.5
1987	76.7	77.4	78.0	81.2	81.6	81.7	82.7	83.7	83.8	83.3	80.6	79.7	80.9
1988	76.9	76.6	77.8	80.4	82.4	84.3	83.6	82.8	82.2	81.6	79.8	76.9	80.4
1989	76.2	76.0	76.1	78.8	80.3	81.2	81.8	82.3	82.3	81.7	80.0	79.2	79.7
1990	77.1	76.4	76.5	79.1	81.8	82.4	82.6	82.9	83.4	82.1	80.7	77.5	80.2
1991	77.0	77.8	78.6	79.2	81.0	83.2	83.1	83.9	83.3	82.4	79.9	77.0	80.5
1992	77.1	78.2	78.9	80.8	81.3	83.4	82.4	82.7	82.3	84.0	80.8	79.3	80.9
1993	77.3	78.5	79.3	80.3	82.1	83.3	82.8	84.2	83.0	82.7	80.9	78.9	81.1
1994	77.9	78.0	79.3	79.7	82.8	82.8	82.9	83.8	83.3	82.8	81.1	79.7	81.2
1995	78.0	78.7	77.2	80.6	81.5	83.3	84.2	84.5	84.9	82.3	80.9	80.0	81.3
1996	78.2	77.9	79.1	79.1	80.3	81.3	81.6	81.8	81.8	81.6	78.8	76.7	79.9
1997	76.2	76.0	76.6	80.3	81.5	83.4	83.1	83.1	83.2	82.4	80.9	80.1	80.6
1998	78.7	78.7	78.2	79.6	81.7	83.1	82.6	83.7	82.8	82.2	80.2	78.6	80.8
1999	76.9	75.4	77.7	79.5	82.4	82.1	81.5	82.7	83.1	81.5	79.8	76.9	80.0
2000	75.7	76.7	76.6	79.4	80.6	82.0	82.9	82.8	82.0	81.8	79.5	78.4	79.9
2001	77.3	76.9	79.2	80.2	82.7	82.8	82.9	83.2	82.9	82.1	79.4	78.3	80.7
2002	78.1	77.6	79.1	79.3	81.1	83.1	82.9	83.1	83.0	81.9	80.8	78.6	80.7
2003	77.9	77.9	79.8	79.6	81.4	82.1	82.2	82.3	83.4	81.9	79.8	78.0	80.5
2004	76.2	76.7	77.6	78.9	79.5	82.8	82.5	83.9	83.2	82.1	79.5	78.4	80.1
2005	76.1	75.3	79.7	81.5	81.9	83.8	83.8	83.6	83.9	81.8	80.4	76.6	80.7
2006	75.5	76.6	78.7	79.2	82.2	83.0	82.2	82.6	83.8	83.2	81.2	78.7	80.6
2007	77.2	79.0	79.9	80.1	83.3	84.0	83.7	83.2	82.9	82.1	79.8	77.7	81.1
2008	76.2	76.6	77.8	78.9	81.7	82.8	83.4	84.1	82.6	81.6	80.0	78.0	80.3
2009	78.4	77.7	77.6	79.6	80.6	83.3	84.8	84.4	84.2	84.5	81.3	80.3	81.4
2010	78.0	80.1	80.7	80.7	82.1	82.7	83.1	84.2	83.3	82.4	79.7	77.1	81.2
2011	77.2	77.8	77.7	79.4	79.7	82.1	82.2	82.7	82.5	82.0	80.4	78.4	80.2
2012	77.3	77.8	78.6	80.6	81.4	85.7	83.7	83.5	84.9	83.9	82.5	79.5	81.6
2013	78.3	78.2	79.5	80.8	81.3	82.0	82.8	83.9	84.4	83.8	80.3	80.2	81.3
POR= 58 YRS	76.9	77.1	78.1	79.4	80.9	82.4	82.6	82.9	82.7	82.0	80.0	78.1	80.3

HEATING DEGREE DAYS (base 65°F) 2013 SAN JUAN (TJSJ)

YEAR	JUL	AUG	SEP	OCT	NOV	DEC	JAN	FEB	MAR	APR	MAY	JUN	TOTAL
1984-85	0	0	0	0	0	0	0	0	0	0	0	0	0
1985-86	0	0	0	0	0	0	0	0	0	0	0	0	0
1986-87	0	0	0	0	0	0	0	0	0	0	0	0	0
1987-88	0	0	0	0	0	0	0	0	0	0	0	0	0
1988-89	0	0	0	0	0	0	0	0	0	0	0	0	0
1989-90	0	0	0	0	0	0	0	0	0	0	0	0	0
1990-91	0	0	0	0	0	0	0	0	0	0	0	0	0
1991-92	0	0	0	0	0	0	0	0	0	0	0	0	0
1992-93	0	0	0	0	0	0	0	0	0	0	0	0	0
1993-94	0	0	0	0	0	0	0	0	0	0	0	0	0
1994-95	0	0	0	0	0	0	0	0	0	0	0	0	0
1995-96	0	0	0	0	0	0	0	0	0	0	0	0	0
1996-97	0	0	0	0	0	0	0	0	0	0	0	0	0
1997-98	0	0	0	0	0	0	0	0	0	0	0	0	0
1998-99	0	0	0	0	0	0	0	0	0	0	0	0	0
1999-00	0	0	0	0	0	0	0	0	0	0	0	0	0
2000-01	0	0	0	0	0	0	0	0	0	0	0	0	0
2001-02	0	0	0	0	0	0	0	0	0	0	0	0	0
2002-03	0	0	0	0	0	0	0	0	0	0	0	0	0
2003-04	0	0	0	0	0	0	0	0	0	0	0	0	0
2004-05	0	0	0	0	0	0	0	0	0	0	0	0	0
2005-06	0	0	0	0	0	0	0	0	0	0	0	0	0
2006-07	0	0	0	0	0	0	0	0	0	0	0	0	0
2007-08	0	0	0	0	0	0	0	0	0	0	0	0	0
2008-09	0	0	0	0	0	0	0	0	0	0	0	0	0
2009-10	0	0	0	0	0	0	0	0	0	0	0	0	0
2010-11	0	0	0	0	0	0	0	0	0	0	0	0	0
2011-12	0	0	0	0	0	0	0	0	0	0	0	0	0
2012-13	0	0	0	0	0	0	0	0	0	0	0	0	0
2013-	0	0	0	0	0	0	0	0	0	0	0	0	0

WBAN : 11641

COOLING DEGREE DAYS (base 65°F) 2013 SAN JUAN (TJSJ)

YEAR	JAN	FEB	MAR	APR	MAY	JUN	JUL	AUG	SEP	OCT	NOV	DEC	TOTAL
1984	415	377	479	508	503	528	553	553	522	517	417	389	5761
1985	352	349	368	403	483	547	579	577	508	459	429	371	5425
1986	329	315	390	428	444	501	535	538	534	517	429	401	5361
1987	366	354	407	490	521	508	556	588	571	575	477	464	5877
1988	377	341	403	470	547	587	581	558	523	522	453	375	5737
1989	354	313	353	421	482	495	529	543	525	526	456	443	5440
1990	383	325	362	430	526	526	551	561	559	539	478	392	5632
1991	379	363	428	430	503	551	571	593	558	547	455	380	5758
1992	383	393	435	479	512	556	547	555	524	596	482	454	5916
1993	391	383	450	469	535	557	561	603	550	557	483	440	5979
1994	404	370	449	448	559	541	563	592	556	562	493	461	5998
1995	412	389	387	475	518	557	602	611	603	545	486	472	6057
1996	414	381	444	430	480	495	519	529	510	524	421	372	5519
1997	353	316	369	467	518	561	569	567	555	545	485	473	5778
1998	430	391	415	446	523	550	555	589	538	541	462	428	5868
1999	374	297	402	443	547	515	519	558	549	516	449	379	5548
2000	339	345	366	443	492	517	560	557	516	530	443	424	5532
2001	388	342	448	464	555	540	563	569	544	535	437	421	5806
2002	410	359	445	435	503	548	562	566	549	530	483	429	5819
2003	405	370	465	446	517	517	542	543	560	532	453	410	5760
2004	351	348	397	421	457	541	553	593	558	538	442	423	5622
2005	353	295	463	503	529	571	590	583	571	529	468	366	5821
2006	332	329	430	433	541	549	541	548	571	568	492	436	5770
2007	385	397	473	461	576	574	582	573	544	542	451	403	5961
2008	355	343	402	423	523	542	578	603	532	520	456	408	5685
2009	420	361	398	448	493	556	620	610	583	610	492	479	6070
2010	408	428	493	480	537	539	568	602	554	548	447	381	5985
2011	386	362	399	440	461	523	541	558	533	533	472	422	5630
2012	388	376	427	473	517	626	590	581	603	592	532	458	6163
2013	421	375	455	484	513	516	559	593	589	589	469	482	6045

SNOWFALL (inches) 2013 SAN JUAN (TJSJ)

YEAR	JUL	AUG	SEP	OCT	NOV	DEC	JAN	FEB	MAR	APR	MAY	JUN	TOTAL
1984-85	0.0	0.0	0.0	0.0	0.0	0.0	0.0	0.0	0.0	0.0	0.0	0.0	0.0
1985-86	0.0	0.0	0.0	0.0	0.0	0.0	0.0	0.0	0.0	0.0	0.0	0.0	0.0
1986-87	0.0	0.0	0.0	0.0	0.0	0.0	0.0	0.0	0.0	0.0	0.0	0.0	0.0
1987-88	0.0	0.0	0.0	0.0	0.0	0.0	0.0	0.0	0.0	0.0	0.0	0.0	0.0
1988-89	0.0	0.0	0.0	0.0	0.0	0.0	0.0	0.0	0.0	0.0	0.0	0.0	0.0
1989-90	0.0	0.0	T	0.0	0.0	0.0	0.0	0.0	0.0	0.0	0.0	0.0	T
1990-91	0.0	0.0	0.0	0.0	0.0	0.0	0.0	0.0	0.0	0.0	0.0	0.0	0.0
1991-92	0.0	0.0	0.0	0.0	0.0	0.0	0.0	0.0	0.0	0.0	0.0	0.0	0.0
1992-93	0.0	0.0	0.0	0.0	0.0	0.0	0.0	0.0	0.0	0.0	0.0	0.0	0.0
1993-94	0.0	0.0	0.0	0.0	0.0	0.0	0.0	0.0	0.0	0.0	0.0	0.0	0.0
1994-95	0.0	0.0	0.0	0.0	0.0	0.0	0.0	0.0	0.0	0.0	0.0	0.0	0.0
1995-96	0.0	0.0	0.0	0.0	0.0	0.0	0.0	0.0	0.0	0.0	0.0	0.0	0.0
1996-97	0.0	0.0	0.0	0.0	0.0	0.0	0.0	0.0	0.0	0.0	0.0	0.0	0.0
1997-98	0.0	0.0	0.0	0.0	0.0	0.0	0.0	0.0	0.0	0.0	0.0	0.0	0.0
1998-99	0.0	0.0	0.0	0.0	0.0	0.0	0.0	0.0	0.0	0.0	0.0	0.0	0.0
1999-00	0.0	0.0	0.0	0.0	0.0	0.0	0.0	0.0	0.0	0.0	0.0	0.0	0.0
2000-01	0.0	0.0	0.0	0.0	0.0	0.0	0.0	0.0	0.0	0.0	0.0	0.0	0.0
2001-02	0.0	0.0	0.0	0.0	0.0	0.0	0.0	0.0	0.0	0.0	0.0	0.0	0.0
2002-03	0.0	0.0	0.0	0.0	0.0	0.0	0.0	0.0	0.0	0.0	0.0	0.0	0.0
2003-04	0.0	0.0	0.0	0.0	0.0	0.0	0.0	0.0	0.0	0.0	0.0	0.0	0.0
2004-05	0.0	0.0	0.0	0.0	0.0	0.0	0.0	0.0	0.0	0.0	0.0	0.0	0.0
2005-06	0.0	0.0	0.0	0.0	0.0	0.0	0.0	0.0	0.0	0.0	0.0	0.0	0.0
2006-07	0.0	0.0	0.0	0.0	0.0	0.0	0.0	0.0	0.0	0.0	0.0	0.0	0.0
2007-08	0.0	0.0	0.0	0.0	0.0	0.0	0.0	0.0	0.0	0.0	0.0	0.0	0.0
2008-09	0.0	0.0	0.0	0.0	0.0	0.0	0.0	0.0	0.0	0.0	0.0	0.0	0.0
2009-10	0.0	0.0	0.0	0.0	0.0	0.0	0.0	0.0	0.0	0.0	0.0	0.0	0.0
2010-11	0.0	0.0	0.0	0.0	0.0	0.0	0.0	0.0	0.0	0.0	0.0	0.0	0.0
2011-12	0.0	0.0	0.0	0.0	0.0	0.0	0.0	0.0	0.0	0.0	0.0	0.0	0.0
2012-13	0.0	0.0	0.0	0.0	0.0	0.0	0.0	0.0	0.0	0.0	0.0	0.0	0.0
2013-	0.0	0.0	0.0	0.0	0.0	0.0	0.0	0.0	0.0	0.0	0.0	0.0	0.0
POR= 58 YRS	0.0	0.0	T	0.0	0.0	0.0	0.0	0.0	0.0	0.0	0.0	0.0	T

WBAN : 11641

REFERENCE NOTES :

<p>PAGE 1: THE TEMPERATURE GRAPH SHOWS NORMAL MAXIMUM AND NORMAL MINIMUM DAILY TEMPERATURES (SOLID CURVES) AND THE ACTUAL DAILY HIGH AND LOW TEMPERATURES (VERTICAL BARS).</p> <p>PAGE 2 AND 3: H/C INDICATES HEATING AND COOLING DEGREE DAYS. RH INDICATES RELATIVE HUMIDITY W/O INDICATES WEATHER AND OBSTRUCTIONS S INDICATES SUNSHINE. PR INDICATES PRESSURE. CLOUDINESS ON PAGE 3 IS THE SUM OF THE CEILOMETER AND SATELLITE DATA NOT TO EXCEED EIGHT EIGHTHS(OKTAS).</p> <p>GENERAL: T INDICATES TRACE PRECIPITATION, AN AMOUNT GREATER THAN ZERO BUT LESS THAN THE LOWEST REPORTABLE VALUE. + INDICATES THE VALUE ALSO OCCURS ON EARLIER DATES. BLANK ENTRIES DENOTE MISSING OR UNREPORTED DATA. ASOS INDICATES AUTOMATED SURFACE OBSERVING SYSTEM. PM INDICATES THE LAST DAY OF THE PREVIOUS MONTH. POR (PERIOD OF RECORD) BEGINS WITH THE JANUARY DATA MONTH AND IS THE NUMBER OF YEARS USED TO COMPUTE THE MEAN. INDIVIDUAL MONTHS WITHIN THE POR MAY BE MISSING. WHEN THE POR FOR A NORMAL IS LESS THAN 30 YEARS, THE NORMAL IS PROVISIONAL AND IS BASED ON THE NUMBER OF YEARS INDICATED. 0.* OR * INDICATES THE VALUE OR MEAN-DAYS-WITH IS BETWEEN 0.00 AND 0.05. CLOUDINESS FOR ASOS STATIONS DIFFERS FROM THE NON-ASOS OBSERVATION TAKEN BY A HUMAN OBSERVER. ASOS STATION CLOUDINESS IS BASED ON TIME-AVERAGED CEILOMETER DATA FOR CLOUDS AT OR BELOW 12,000 FEET CLEAR INDICATES 0 - 2 OKTAS, PARTLY CLOUDY INDICATES 3 - 6 OKTAS, AND CLOUDY INDICATES 7 OR 8 OKTAS.</p> <p>GENERAL CONTINUED: WIND DIRECTION IS RECORDED IN TENS OF DEGREES (2 DIGITS) CLOCKWISE FROM TRUE NORTH. "00" INDICATES CALM. "36" INDICATES TRUE NORTH. RESULTANT WIND IS THE VECTOR AVERAGE OF THE SPEED AND DIRECTION. AVERAGE TEMPERATURE IS THE SUM OF THE MEAN DAILY MAXIMUM AND MINIMUM TEMPERATURE DIVIDED BY 2. SNOWFALL DATA COMPRISE ALL FORMS OF FROZEN</p>	<p>PRECIPITATION, INCLUDING HAIL. A HEATING (COOLING) DEGREE DAY IS THE DIFFERENCE BETWEEN THE AVERAGE DAILY TEMPERATURE AND 65 F. DRY BULB IS THE TEMPERATURE OF THE AMBIENT AIR. DEW POINT IS THE TEMPERATURE TO WHICH THE AIR MUST BE COOLED TO ACHIEVE 100 PERCENT RELATIVE HUMIDITY. WET BULB IS THE TEMPERATURE THE AIR WOULD HAVE IF THE MOISTURE CONTENT WAS INCREASED TO 100 PERCENT RELATIVE HUMIDITY. ON JULY 1, 1996, THE NATIONAL WEATHER SERVICE BEGAN USING THE "METAR" OBSERVATION CODE THAT WAS ALREADY EMPLOYED BY MOST OTHER NATIONS OF THE WORLD. THE MOST NOTICEABLE DIFFERENCE IN THIS ANNUAL PUBLICATION WILL BE THE CHANGE IN UNITS FROM TENTHS TO EIGHTHS(OKTAS) FOR REPORTING THE AMOUNT OF SKY COVER. STATION HISTORY STOPPED WITH THE 2009 ANNUAL. IF YOU NEED STATION HISTORY INFORMATION GO TO "Historical Observing Metadata Repository", URL IS: http://www.ncdc.noaa.gov/homr/ SNOWFALL STOPPED MONTH & YEAR INDICATED ABOVE. NO FURTHER YEARS INCLUDED UNLESS RESTARTED.</p> <p>NOTE: The "Period of Record:(POR)" for all "averages" is based on "Summary of the Day First Order Station" and "Cooperative Summary of the Day" archives.</p>
---	---

2013

SAN JUAN

PUERTO RICO (TJSJ)

San Juan, located on the north coast of the island of Puerto Rico, is surrounded by the waters of the Atlantic Ocean and San Juan Bay. Local custom assigns the name San Juan to the old city which lies right on the coast, but the modern metropolitan area extends inland about 12 miles. These inland sections have a temperature and rainfall regime significantly different from the coastal area. Isla Verde Airport, where weather observations are made, lies on the coast about 7 miles east of old San Juan. The surrounding terrain is level with a gradual upslope inland. Mountain ranges, with peak elevations of 4,000 feet, extend east and west through the central portion of Puerto Rico, and are located 15 to 20 miles east and south of San Juan. These mountain ranges have a decided influence on the rainfall of the San Juan metropolitan area, and on the entire island in general.

The climate is tropical maritime, characteristic of all tropical islands. The predominant easterly trade winds, modified by local effects such as the land and sea breeze and the particular island topography, are a primary feature of the climate of San Juan and have a significant influence on the temperature and rainfall. During daylight hours the wind blows almost constantly off the ocean. Usually, after sunset the wind shifts to the south or southeast, off land. This daily wind variation is a contributing factor to the delightful climate of the city. The annual temperature range is small with about a 5-6 degree difference between the temperatures of the warmest and coldest months. The inland sectors have warmer afternoons and cooler nights. In the interior mountain and valley regions even greater daily and annual ranges of temperature occur. The highest temperatures recorded in Puerto Rico have exceeded 105 degrees and the lowest have been near 40. Sea water temperatures range from 78 degrees in March to about 83 degrees in September.

Although rainfall in San Juan is nearly 60 inches, the geographical distribution of rainfall over the island shows the heaviest rainfall, of about 180 inches per year, in the Luquillo Range, only 23 miles distant from San Juan. The driest area, with annual rainfall of 30 to 35 inches, is located in the southwest corner of the island. Rain showers occur mostly in the afternoon and at night. The nocturnal showers, usually light, are a characteristic feature of the San Juan rainfall pattern. Rainfall is generally of the brief showery type except for the continuous rains occurring with the passage of tropical disturbances, or when the trailing edge of a cold front out of the United States reaches Puerto Rico. This normally occurs from about November to April.

Puerto Rico is in the tropical hurricane region of the eastern Caribbean. The hurricane season begins June 1 and ends November 30. Only a few hurricanes have passed close enough to San Juan to produce hurricane force winds or damage.

Mild temperatures, refreshing sea breezes in the daytime, plenty of sunshine, and adequate rainfall make the climate of San Juan most enjoyable for tourists and residents alike.

Station History

SAN JUAN, RQ

NAME	Begin Date	End Date	Latitude	Longitude	Elevation Feet	Relocation	Platform
SAN JUAN ISLA VERDE INTL AP	1981-12-31	1982-01-01	18° 25'	-66° 00'	69		COOP
SAN JUAN ISLA VERDE INTL AP	1969-01-01	1971-01-01	18° 25'	-66° 00'	72		COOP, WXSVC
ISLA VERDE	1955-05-01	1955-05-24	18° 25'	-66° 00'	72		AIRWAYS, COOP
SAN JUAN ISLA VERDE INTL AP	1971-01-01	1981-12-31	18° 25'	-66° 00'	69		COOP, WXSVC
SAN JUAN L M MARIN INTL AP	1996-05-01	2002-06-10	18° 26'	-66° 0'	9		ASOS, COOP
SAN JUAN ISLA VERDE INTL AP	1964-12-01	1969-01-01	18° 25'	-66° 00'	72		AIRWAYS, COOP
SAN JUAN ISLA VERDE INTL AP	1982-01-01	1996-05-01	18° 25'	-66° 00'	9		COOP
SAN JUAN L M MARIN INTL AP	2002-06-10	Present	18° 25'	-66° 0'	9		ASOS, COOP
SAN JUAN ISLA VERDE AP	1955-05-24	1964-12-01	18° 25'	-66° 00'	72		AIRWAYS, COOP

Element History

Element	Begin Date	End Date	Frequency	Time Of Observation	Equipment *	Equipment * Modifications	Equipment Exposure
PRECIP	1955-05-01	1982-01-01	DAILY	2400	UNIV		
PRECIP	1995-07-01	2002-06-10	DAILY	2400	UNIV		
TEMP	1995-07-01	2002-06-10	DAILY	2400	HYGR		
TEMP	1982-01-01	1992-05-21	DAILY	2400			
PRECIP	2002-06-10	Present	HOURLY	2400	AHTB	RCRD;HTD	
TEMP	2002-06-10	Present	DAILY	2400	HYGR		
PRECIP	1992-05-21	1995-07-01	HOURLY	2400			
PRECIP	2002-06-10	Present	DAILY	2400	PCPNX		
TEMP	1955-05-01	1982-01-01	DAILY	2400			
PRECIP	1982-01-01	1992-05-21	HOURLY	2400			
PRECIP	1995-07-01	2002-06-10	HOURLY	2400	UNIV	RCRD	
PRECIP	1982-01-01	1992-05-21	DAILY	2400	UNIV	RCRD	
TEMP	1992-05-21	1995-07-01	DAILY	2400	HYGR		
PRECIP	1992-05-21	1995-07-01	DAILY	2400	UNIV	RCRD	

* For explanation of codes and abbreviations see Station Metadata link below.

Other Station Information can be found at:

ASOS Implementation by NWS: <http://www.nws.noaa.gov/ops2/Surface/asosimplementation.htm>

Station Metadata website: <http://www.ncdc.noaa.gov/homr>

INQUIRES/COMMENTS CALL: (828) 271-4800, option 2

Fax Number : (828) 271-4876

TDD : (828) 271-4010

Email : ncdc.orders@noaa.gov

NOAA/National Climatic Data Center

Attn: User Engagement & Services Branch

151 Patton Avenue

Asheville, NC 28801-5001

Visit our Web Site for other weather data: www.ncdc.noaa.gov