

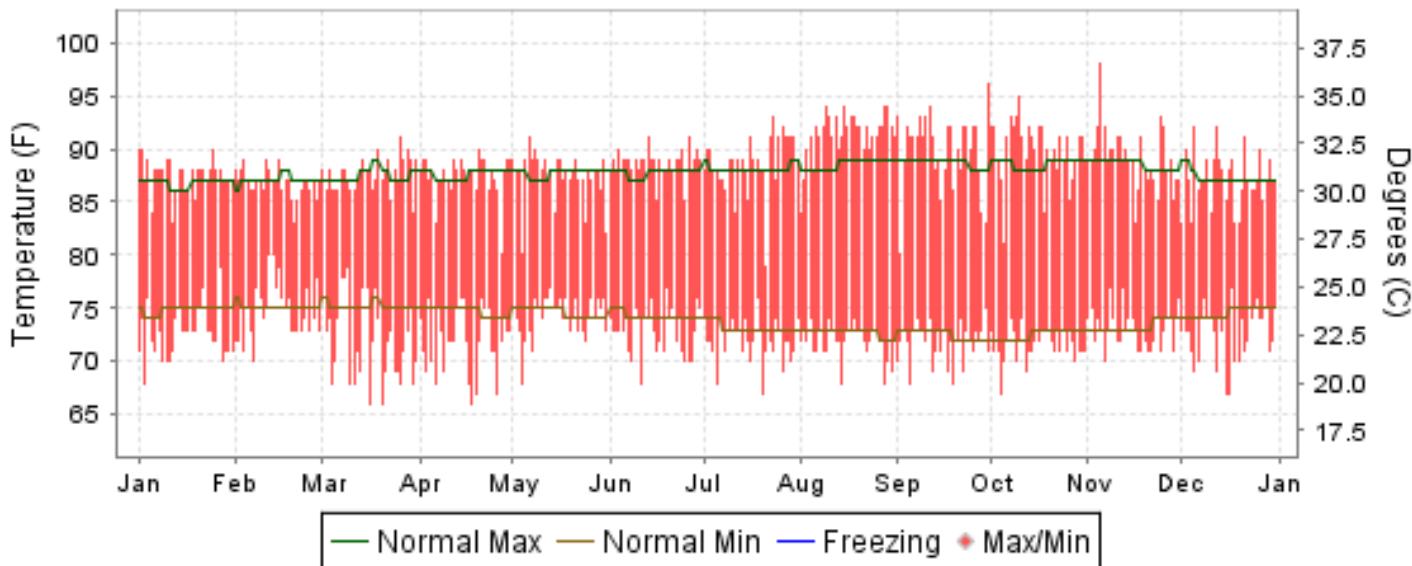


# 2009 LOCAL CLIMATOLOGICAL DATA ANNUAL SUMMARY WITH COMPARATIVE DATA

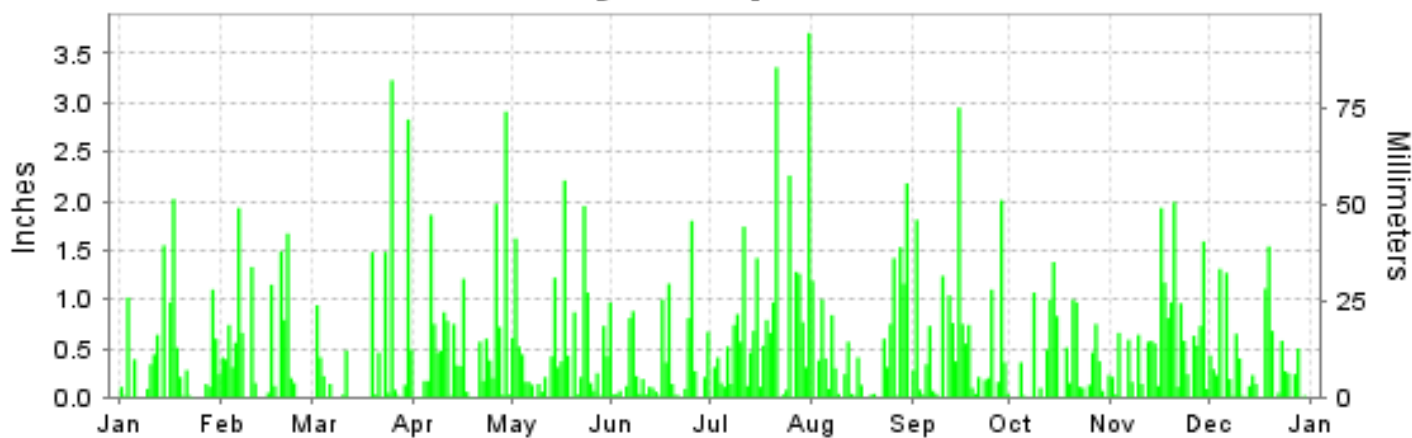
ISSN 0198-4373

## POHNPEI, EASTERN CAROLINE ISLANDS, PACIFIC (PTTP)

### Daily Max/Min Temperature



### Daily Precipitation



### Daily Station Pressure



I CERTIFY THAT THIS IS AN OFFICIAL PUBLICATION OF THE NATIONAL OCEANIC AND ATMOSPHERIC ADMINISTRATION, AND IS COMPILED FROM RECORDS ON FILE AT THE NATIONAL CLIMATIC DATA CENTER.

NATIONAL  
OCEANIC AND  
ATMOSPHERIC ADMINISTRATION

NATIONAL  
ENVIRONMENTAL SATELLITE, DATA  
AND INFORMATION SERVICE

NATIONAL  
CLIMATIC DATA CENTER  
ASHEVILLE, NORTH CAROLINA

*Thomas R. Karl*  
DIRECTOR  
NATIONAL CLIMATIC DATA CENTER

# METEOROLOGICAL DATA FOR 2009

## POHNPEI (PTTP)

LATITUDE: 6 ° 58'N      LONGITUDE: 158 ° 13'W      ELEVATION (FT): GRND: 123    BARO: 126      TIME ZONE: 165 E MER (UTC 11)      WBAN: 40504

ELEMENT		JAN	FEB	MAR	APR	MAY	JUN	JUL	AUG	SEP	OCT	NOV	DEC	YEAR	
TEMPERATURE °F	MEAN DAILY MAXIMUM	87.5	86.8	87.5	87.4	87.5	88.7	88.6	91.4	89.9	89.9	89.1	87.2	88.5	
	HIGHEST DAILY MAXIMUM	90	89	91	90	91	91	93	94	96	95	98	92	98	
	DATE OF OCCURRENCE	25+	15+	26	20	06	26+	23	29+	30	10	05	12+	NOV 05	
	MEAN DAILY MINIMUM	72.7	74.8	72.0	72.0	74.2	72.9	72.0	71.9	71.8	71.6	73.1	72.6	72.6	
	LOWEST DAILY MINIMUM	68	70	66	66	68	68	67	68	68	67	70	67	66	
	DATE OF OCCURRENCE	03	07	20+	18	04	11	20	28+	19+	04	06	16+	APR 18	
	AVERAGE DRY BULB	80.1	80.8	79.8	79.7	80.9	80.8	80.3	81.7	80.9	80.8	81.1	79.9	80.6	
	MEAN WET BULB	76.6	76.4	76.0	77.3	77.6	77.8	77.7	77.5	77.5	77.3	78.0	77.3	77.3	
	MEAN DEW POINT	74.5	74.4	74.1	75.7	76.0	76.0	76.3	76.1	76.2	76.1	76.9	75.8	75.7	
	NUMBER OF DAYS WITH:														
	MAXIMUM >= 90°	3	0	3	1	2	5	11	28	19	19	12	5	108	
	MAXIMUM <= 32°	0	16	12	0	0	0	0	0	0	0	0	0	28	
	MINIMUM <= 32°	0	0	0	0	0	0	0	0	0	0	0	0	0	
MINIMUM <= 0°	0	0	0	0	0	0	0	0	0	0	0	0	0		
H/C	HEATING DEGREE DAYS	0	0	0	0	0	0	0	0	0	0	0	0	0	
	COOLING DEGREE DAYS	477	447	463	448	498	482	484	523	482	497	491	469	5761	
RH	MEAN (PERCENT)	80	79	81	83	85	82	87	86	87	87	88	85	84	
	HOUR 05 LST	84	80	87	87	89	90	93	95	95	95	94	89	90	
	HOUR 11 LST	76	75	74	76	77	74	77	75	77	73	80	79	76	
	HOUR 17 LST	78	80	80	83	85	81	86	83	86	85	88	84	83	
	HOUR 23 LST	80	80	85	85	89	87	90	95	92	93	92	86	88	
S	PERCENT POSSIBLE SUNSHINE														
W/O	NUMBER OF DAYS WITH:														
	HEAVY FOG(VISBY <= 1/4 MI)	0	0	0	0	0	0	0	0	0	0	0	0	0	
	THUNDERSTORMS	0	0	1	3	1	4	5	3	3	1	5	0	26	
CLOUDNESS	SUNRISE-SUNSET: (OKTAS)														
	CEILOMETER (<= 12,000 FT.)														
	SATELLITE (> 12,000 FT.)														
	MIDNIGHT-MIDNIGHT: (OKTAS)														
	CEILOMETER (<= 12,000 FT.)														
SATELLITE (> 12,000 FT.)															
NUMBER OF DAYS WITH:															
CLEAR															
PARTLY CLOUDY															
CLOUDY															
PR	MEAN STATION PRESS. (IN.)	29.67	29.65	29.68	29.68	29.67	29.69	29.65	29.67	29.65	29.67	29.62	29.66	29.66	
	MEAN SEA-LEVEL PRESS. (IN.)	29.83	29.81	29.83	29.83	29.83	29.85	29.80	29.82	29.81	29.82	29.78	29.81	29.82	
WINDS	RESULTANT SPEED (MPH)	7.2	7.2	5.3	5.4	4.3	3.7	2.2	1.6	1.6	1.5	2.1	2.7	3.5	
	RES. DIR. (TENS OF DEGS.)	08	07	07	07	09	08	10	16	14	12	09	08	09	
	MEAN SPEED (MPH)	8.1	8.0	6.6	6.2	5.2	4.7	4.6	4.3	4.2	4.1	4.3	4.2	5.4	
	PREVAIL.DIR.(TENS OF DEGS.)	08	05	04	09	09	09	08	13	13	13	12	09	08	
	MAXIMUM 2-MINUTE WIND														
	SPEED (MPH)	18	20	18	17	18	18	17	14	21	9	14	16	21	
	DIR. (TENS OF DEGS.)	04	08	06	13	15	09	22	18	08	30	05	03	08	
	DATE OF OCCURRENCE	19	06	05	16	04	19	27	17	05	31	01	19	SEP 05	
	MAXIMUM 3-SECOND WIND:														
	SPEED (MPH)	35	36	30	35	37	28	31	18	29	18	33	22	37	
DIR. (TENS OF DEGS.)	09	09	05	05	07	14	14	23	23	09	06	09	07		
DATE OF OCCURRENCE	23	23	02	16	14	24	15	22	29	19	28	27	MAY 14		
PRECIPITATION	WATER EQUIVALENT:														
	TOTAL (IN.)	10.83	12.11	12.51	15.85	15.75	9.28	24.36	13.69	16.18	10.14	16.58	10.56	167.84	
	GREATEST 24-HOUR (IN.)	2.02	1.93	3.23	2.91	2.21	1.80	3.71	2.18	2.95	1.38	1.99	1.54	3.71	
	DATE OF OCCURRENCE	17	06	25	29	17	25	31	30	15	14	20	19	JUL 31	
	NUMBER OF DAYS WITH:														
	PRECIPITATION 0.01	22	18	18	28	28	26	30	24	26	24	25	25	294	
PRECIPITATION 0.10	17	16	12	20	24	16	26	17	20	18	23	19	228		
PRECIPITATION 1.00	4	5	4	4	5	3	7	6	6	4	4	4	56		
SNOWFALL	SNOW,ICE PELLETS,HAIL														
	TOTAL (IN.)	0.0	0.0	0.0	0.0	0.0	0.0	0.0	0.0	0.0	0.0	0.0	0.0	0.0	
	GREATEST 24-HOUR (IN.)	0.0	0.0	0.0	0.0	0.0	0.0	0.0	0.0	0.0	0.0	0.0	0.0	0.0	
	DATE OF OCCURRENCE	0	0	0	0	0	0	0	0	0	0	0	0	0	
	MAXIMUM SNOW DEPTH (IN.)	0	0	0	0	0	0	0	0	0	0	0	0	0	
	DATE OF OCCURRENCE	0	0	0	0	0	0	0	0	0	0	0	0	0	
NUMBER OF DAYS WITH:															
SNOWFALL >= 1.0	0	0	0	0	0	0	0	0	0	0	0	0	0		

# NORMALS, MEANS, AND EXTREMES

## POHNPEI (PTTP)

**LATITUDE:**  
6 ° 58'N

**LONGITUDE:**  
158 ° 13'W

**ELEVATION (FT):**  
GRND: 123 BARO: 126

**TIME ZONE:**  
165 E MER (UTC 11)

**WBAN: 40504**

ELEMENT		POR	JAN	FEB	MAR	APR	MAY	JUN	JUL	AUG	SEP	OCT	NOV	DEC	YEAR
TEMPERATURE °F	NORMAL DAILY MAXIMUM	30	86.8	87.0	87.5	87.6	87.8	87.8	88.2	88.6	88.8	88.7	88.6	87.3	87.9
	MEAN DAILY MAXIMUM	58	86.5	86.6	87.1	87.2	87.5	87.6	88.0	88.5	88.5	88.6	88.2	87.1	87.6
	HIGHEST DAILY MAXIMUM	59	94	93	95	94	94	94	95	97	96	95	98	95	98
	YEAR OF OCCURRENCE		2005	2002	1950	1997	2003	2006	2005	2001	2009	2009	2009	1996	NOV 2009
	MEAN OF EXTREME MAXS.	58	89.5	89.3	90.1	90.2	90.7	90.6	91.2	91.8	92.0	92.1	91.6	90.7	90.8
	NORMAL DAILY MINIMUM	30	74.8	75.1	75.2	74.7	74.6	74.2	73.2	72.8	72.6	72.6	73.3	74.5	74.0
	MEAN DAILY MINIMUM	58	75.0	75.3	75.2	74.7	74.5	74.1	73.1	72.8	72.6	72.7	73.3	74.5	74.0
	LOWEST DAILY MINIMUM	59	61	63	65	61	61	67	66	63	62	63	64	65	61
	YEAR OF OCCURRENCE		2000	2000	2003	2000	2000	2000	1999	1999	1998	1998	2004	1999	MAY 2000
	MEAN OF EXTREME MINS.	58	70.6	70.3	70.8	70.7	71.1	70.6	70.2	69.9	69.7	69.9	69.6	70.4	70.3
	NORMAL DRY BULB	30	80.8	81.1	81.4	81.2	81.2	81.0	80.7	80.7	80.7	80.7	81.0	80.9	81.0
	MEAN DRY BULB	58	80.8	81.0	81.2	81.0	81.0	80.9	80.5	80.6	80.6	80.6	80.8	80.8	80.8
	MEAN WET BULB	26	76.1	75.9	76.2	76.7	77.0	76.9	76.6	76.6	76.5	76.7	76.9	76.7	76.6
	MEAN DEW POINT	26	74.7	74.4	74.8	75.4	75.9	75.9	75.6	75.5	75.5	75.7	75.9	75.5	75.4
	NORMAL NO. DAYS WITH:														
	MAXIMUM >= 90	30	1.6	1.4	3.9	4.8	7.2	6.5	10.4	13.3	14.3	15.0	12.2	4.6	95.2
	MAXIMUM <= 32	30	0.0	0.0	0.0	0.0	0.0	0.0	0.0	0.0	0.0	0.0	0.0	0.0	0.0
MINIMUM <= 32	30	0.0	0.0	0.0	0.0	0.0	0.0	0.0	0.0	0.0	0.0	0.0	0.0	0.0	
MINIMUM <= 0	30	0.0	0.0	0.0	0.0	0.0	0.0	0.0	0.0	0.0	0.0	0.0	0.0	0.0	
H/C	NORMAL HEATING DEG. DAYS	30	0	0	0	0	0	0	0	0	0	0	0	0	0
	NORMAL COOLING DEG. DAYS	30	490	449	506	485	501	480	486	487	471	486	477	493	5811
RH	NORMAL (PERCENT)	30	81	80	80		84	85	85	86	85	86	85	83	
	HOURLY 05 LST	30	84	85	86		90	91	94	95	94	95	93	87	
	HOURLY 11 LST	30	76	75	75	77	78	78	77	77	76	76	77	77	77
	HOURLY 17 LST	30	78	76	77	79	80	80	80	79	79	80	80	79	79
	HOURLY 23 LST	30	83	82	83	86	88	90	92	93	93	93	91	85	88
S	PERCENT POSSIBLE SUNSHINE	44	38	41	45	42	41	40	44	44	44	39	39	36	41
W/O	MEAN NO. DAYS WITH:														
	HEAVY FOG(VISBY <= 1/4 MI) THUNDERSTORMS	46 58	0.0 0.8	0.0 0.8	0.0 1.2	0.0 1.4	0.0 2.1	0.0 2.2	0.0 2.6	0.0 2.2	0.0 2.8	0.0 3.1	0.0 2.9	0.0 1.8	0.0 23.9
CLOUDNESS	MEAN:														
	SUNRISE-SUNSET (OKTAS)	52	7.2	7.1	7.2	7.2	7.1	7.1	6.9	6.9	6.9	6.9	7.0	7.2	7.1
	MIDNIGHT-MIDNIGHT (OKTAS)	26	7.0	7.0	7.2	7.0	7.3	7.1	7.0	7.0	6.8	6.9	6.9	7.1	7.0
	MEAN NO. DAYS WITH:														
	CLEAR	53	0.2	0.2	0.2	0.4	0.3	0.3	0.5	0.6	0.8	0.5	0.4	0.2	4.6
PARTLY CLOUDY	53	4.4	4.4	4.6	4.8	5.1	4.7	5.9	6.4	5.6	6.1	6.2	4.8	63.0	
CLOUDY	53	26.5	23.7	26.2	24.9	25.6	25.0	24.0	23.5	23.3	23.8	23.1	25.5	295.1	
PR	MEAN STATION PRESSURE(IN)	26	29.64	29.65	29.65	29.66	29.66	29.66	29.66	29.66	29.67	29.65	29.63	29.63	29.65
	MEAN SEA-LEVEL PRES. (IN)	26	29.79	29.80	29.81	29.81	29.82	29.82	29.81	29.82	29.82	29.81	29.78	29.78	29.81
WINDS	MEAN SPEED (MPH)	26	7.7	7.7	7.6	6.9	6.4	6.0	5.3	5.1	5.2	5.1	5.4	6.7	6.3
	PREVAIL.DIR.(TENS OF DEGS)	4	06	05	07	09	09	09	09	13	13	13	09	09	09
	MAXIMUM 2-MINUTE:														
	SPEED (MPH)	21	28	28	22	26	30	18	21	32	23	23	35	23	35
	DIR. (TENS OF DEGS)		02	20	06	29	06	09	10	25	09	16	02	02	02
	YEAR OF OCCURRENCE		1992	2008	2006	1997	2005	2009	2008	2002	2005	2001	1991	1990	NOV 1991
	MAXIMUM 3-SECOND														
	SPEED (MPH)	26	55	53	45	56	53	44	41	53	45	51	62	56	62
DIR. (TENS OF DEGS)		32	05	14	32	32	27	32	23	27	23	23	32	23	
YEAR OF OCCURRENCE		1992	2004	1986	1997	1986	2004	2002	2002	2002	2002	1991	1990	NOV 1991	
PRECIPITATION	NORMAL (IN)	30	12.52	9.78	13.96	16.94	19.41	17.06	16.72	16.37	14.94	16.30	14.74	15.87	184.61
	MAXIMUM MONTHLY (IN)	59	26.67	19.76	35.30	38.65	38.43	27.97	37.20	32.74	38.81	28.26	31.79	33.35	38.81
	YEAR OF OCCURRENCE		1962	1964	1991	1959	1980	1987	1965	1976	1991	1989	1957	1975	SEP 1991
	MINIMUM MONTHLY (IN)	59	0.64	1.05	1.52	2.03	2.21	9.28	8.09	5.64	6.57	7.64	4.55	2.40	0.64
	YEAR OF OCCURRENCE		1998	1977	1983	1983	1983	2009	1998	2008	1979	2002	1963	1957	JAN 1998
	MAXIMUM IN 24 HOURS (IN)	59	13.16	8.91	9.97	12.83	7.72	6.26	8.85	13.25	11.11	7.85	22.48	8.04	22.48
	YEAR OF OCCURRENCE		1992	1968	1997	2003	1980	1980	2002	1976	1990	2003	1957	1975	NOV 1957
	NORMAL NO. DAYS WITH:														
	PRECIPITATION >= 0.01	30	21.7	19.6	22.9	24.0	26.9	26.7	26.3	25.9	23.4	25.5	23.9	24.6	291.4
	PRECIPITATION >= 1.00	30	4.0	3.0	4.5	5.6	6.7	5.7	5.3	5.3	4.4	5.1	4.9	4.9	59.4
SNOWFALL	NORMAL (IN)	30	0.0	0.0	0.0	0.0	0.0	0.0	0.0	0.0	0.0	0.0	0.0	0.0	0.0
	MAXIMUM MONTHLY (IN)	13	0.0	0.0	0.0	0.0	0.0	0.0	0.0	0.0	0.0	0.0	0.0	0.0	0.0
	YEAR OF OCCURRENCE														
	MAXIMUM IN 24 HOURS (IN)	59	0.0	0.0	0.0	0.0	0.0	0.0	0.0	0.0	0.0	0.0	0.0	0.0	0.0
	YEAR OF OCCURRENCE'														
	MAXIMUM SNOW DEPTH (IN)	56	0	0	0	0	0	0	0	0	0	0	0	0	0
YEAR OF OCCURRENCE															
NORMAL NO. DAYS WITH:															
SNOWFALL >= 1.0	30	0.0	0.0	0.0	0.0	0.0	0.0	0.0	0.0	0.0	0.0	0.0	0.0	0.0	

**PRECIPITATION (inches) 2009 POHNPEI (PTTP)**

YEAR	JAN	FEB	MAR	APR	MAY	JUN	JUL	AUG	SEP	OCT	NOV	DEC	ANNUAL
1980	14.01	18.63	8.11	15.10	38.43	23.21	15.87	15.79	15.32	11.70	7.96	10.07	194.20
1981	14.59	13.75	8.55	10.47	23.00	17.92	16.20	13.41	15.04	15.43	16.46	17.47	182.29
1982	14.06	16.35	12.94	16.59	22.67	17.28	23.00	17.99	25.58	8.42	9.94	16.05	200.87
1983	1.89	1.72	1.52	2.03	2.21	15.91	24.55	14.29	12.36	20.05	20.99	16.10	133.62
1984	23.24	13.24	9.43	5.85	6.73	17.49	10.49	11.49	12.51	16.75	17.79	13.89	158.90
1985	14.83	12.91	5.15	24.22	13.04	13.80	14.62	14.02	12.48	18.81	19.95	20.11	183.94
1986	10.14	9.02	19.80	11.03	28.35	14.16	21.47	13.22	16.88	7.67	15.48	6.33	173.55
1987	17.77	5.86	25.91	20.18	9.22	27.97	25.80	16.52	11.96	16.61	19.46	15.09	212.35
1988	8.62	5.74	8.93	14.85	21.92	14.06	10.54	13.15	13.45	21.58	15.16	17.06	165.06
1989	18.72	10.66	14.37	24.26	19.83	14.59	21.77	23.21	9.24	28.26	8.72	26.21	219.84
1990	11.72	8.24	13.20	17.87	21.56	15.13	8.37	20.37	26.72	15.94	15.12	15.34	189.58
1991	6.18	8.73	35.30	21.43	22.91	14.68	17.30	18.37	38.81	12.51	23.26	9.06	228.54
1992	21.77	2.28	2.60	5.95	9.98	19.16	19.06	15.89	15.36	19.94	14.85	9.45	156.29
1993	15.83	10.07	19.44	18.91	20.41	21.56	19.60	17.07	9.07	15.40	12.03	25.55	204.94
1994	8.34	10.94	13.24	12.27	25.16	12.34	14.74	11.98	10.23	12.73	4.75	24.92	161.64
1995	12.29	7.52	11.73	18.09	16.74	13.71	9.92	15.47	12.41	20.90	10.70	17.30	166.78
1996	23.33	6.84	8.68	24.30	28.01	12.62	12.27	13.57	11.54	12.30	14.08	12.84	180.38
1997	17.17	16.01	14.67	28.41	13.25	9.35	17.41	17.98	12.53	13.72	10.86	3.38	174.74
1998	0.64	1.98	2.95	4.96	16.08	16.19	8.09	14.93	10.75	14.81	17.35	19.91	128.64
1999	18.22	18.05	27.33	21.21	12.13	11.55	13.93	8.46	13.57	10.99	13.33	25.89	194.66
2000	19.50	18.63	21.68	21.18	20.09	13.33	13.58	19.56	10.44	15.14	10.35	21.95	205.43
2001	21.71	12.51	9.00	12.17	11.17	14.83	15.68	19.28	7.35	17.48	14.47	18.56	174.21
2002	10.81	15.13	9.66	22.11	21.35	21.56	20.14	11.28	21.69	7.64	14.81	8.34	184.52
2003	10.71	7.90	16.25	31.84	29.97	12.67	15.17	11.36	12.48	19.03	10.06	17.43	194.87
2004	7.26	12.02	16.84	14.73	24.20	21.00	11.87	17.34	12.57	11.26	13.67	17.99	180.75
2005	14.33	3.16	21.64	26.11	23.95	15.64	14.08	10.84	20.34	12.17	13.85	14.94	191.05
2006	9.24	8.88	7.96	14.22	17.61	16.47	17.32	20.45	14.52	13.79	18.77	13.09	172.32
2007	4.90	19.50	13.15	18.73	23.03	14.79	15.72	9.35	11.84	15.72	26.13	21.00	193.86
2008	19.28	8.98	15.37	29.29	16.28	20.83	11.50	5.64	13.87	20.47	16.61	9.56	187.68
2009	10.83	12.11	12.51	15.85	15.75	9.28	24.36	13.69	16.18	10.14	16.58	10.56	167.84
POR= 58 YRS	12.23	10.68	14.15	18.27	19.43	16.62	16.94	15.97	15.43	15.69	15.98	15.84	187.23

WBAN : 40504

**AVERAGE TEMPERATURE (°F) 2009 POHNPEI (PTTP)**

YEAR	JAN	FEB	MAR	APR	MAY	JUN	JUL	AUG	SEP	OCT	NOV	DEC	ANNUAL
1980	81.9	81.7	82.8	82.4	80.9	81.7	81.3	81.3	81.0	81.3	81.9	82.3	81.7
1981	81.7	81.7	82.2	82.0	82.3	81.5	81.2	81.6	81.9	81.8	81.8	81.9	81.8
1982	81.4	81.7	81.7	81.8	81.2	81.6	80.3	80.6	80.4	80.7	81.0	82.1	81.2
1983	81.4	81.7	82.4	83.4	84.4	82.8	81.5	81.5	81.7	81.3	81.9	81.5	82.1
1984	80.8	81.5	82.7	83.0	83.3	81.4	81.6	81.1	81.2	81.0	80.8	81.8	81.7
1985	81.3	81.9	82.3	81.0	82.1	81.1	80.5	80.8	81.3	80.9	81.4	81.5	81.3
1986	82.1	81.7	81.3	81.8	80.6	81.6	80.9	81.5	80.9	81.4	81.5	81.4	81.4
1987	81.6	81.3	81.2	81.3	82.0	81.2	80.1	80.9	81.0	81.7	81.2	81.7	81.3
1988	81.7	82.2	82.7	82.1	81.4	81.0	81.0	81.2	80.6	80.2	80.3	80.5	81.2
1989	80.8	81.0	80.8	81.3	80.7	81.0	81.3	80.7	81.0	81.4	81.9	80.7	81.1
1990	81.7	80.7	82.1	81.6	81.3	81.5	81.2	80.9	80.5	81.4	81.1	80.2	81.2
1991	80.5	80.8	79.9	81.0	80.9	81.1	81.5	81.3	80.4	80.2	79.0	79.4	80.5
1992	79.0	80.0	80.0	81.1	81.9	81.6	80.9	81.5	81.3	81.1	80.2	80.5	80.8
1993	79.6	80.2	79.8	80.0	80.7	80.8	80.7	79.9	80.6	80.2	80.3	79.3	80.2
1994	80.3	81.2	81.2	81.3	80.9	80.9	80.5	81.1	79.8	80.7	81.6	80.7	80.9
1995	80.7	80.7	81.8	81.5	81.7	81.2	81.4	81.9	82.0	80.7	81.1	81.7	81.4
1996	80.5	81.9	81.6	80.1	79.9	80.4	81.3	80.8	81.1	80.9	81.0	81.1	80.9
1997	80.2	80.3	81.5	80.9	81.3	81.1	80.6	80.1	80.0	80.1	80.3	80.1	80.5
1998	80.2	79.5	81.1	81.8	80.7	81.2	80.7	80.4	80.3	80.2	79.8	79.4	80.4
1999	78.9	79.4	78.8	79.2	79.4	79.8	78.9	79.0	79.2	79.2	78.6	79.1	79.1
2000	79.2	79.0	79.0	79.5	79.5	80.3	80.2	79.6	80.0	80.2	81.1	80.1	79.8
2001	80.4	81.3	81.9	81.8	81.4	81.9	81.5	82.1	82.5	81.4	81.5	81.1	81.6
2002	81.7	80.8	82.2	81.3	81.8	81.5	82.1	82.4	81.3	82.5	81.5	81.4	81.7
2003	81.0	81.7	81.9	80.9	80.7	81.2	81.1	81.7	80.9	81.9	82.2	81.0	81.4
2004	81.6	81.3	81.4	81.3	81.4	81.1	81.4	81.2	81.4	81.8	81.3	80.4	81.3
2005	80.4	82.2	81.4	80.8	81.0	81.2	81.9	82.0	81.3	81.9	82.2	82.1	81.5
2006	81.5	81.8	81.7	81.6	81.5	81.8	80.7	82.2	82.0	81.7	81.3	81.6	81.6
2007	81.4	80.8	81.5	81.1	81.5	81.5	81.5	81.0	81.0	80.7	80.7	81.3	81.2
2008	81.7	81.4	81.3	81.4	79.8	79.7	79.9	80.2	79.8	80.0	79.8	79.8	80.4
2009	80.1	80.8	79.8	79.7	80.9	80.8	80.3	81.7	80.9	80.8	81.1	79.9	80.6
POR= 58 YRS	80.8	81.0	81.2	81.0	81.0	80.9	80.5	80.6	80.6	80.6	80.8	80.8	80.8

**HEATING DEGREE DAYS (base 65°F) 2009 POHNPEI (PTTP)**

YEAR	JUL	AUG	SEP	OCT	NOV	DEC	JAN	FEB	MAR	APR	MAY	JUN	TOTAL
1983-84	0	0	0	0	0	0	0	0	0	0	0	0	0
1984-85	0	0	0	0	0	0	0	0	0	0	0	0	0
1985-86	0	0	0	0	0	0	0	0	0	0	0	0	0
1986-87	0	0	0	0	0	0	0	0	0	0	0	0	0
1987-88	0	0	0	0	0	0	0	0	0	0	0	0	0
1988-89	0	0	0	0	0	0	0	0	0	0	0	0	0
1989-90	0	0	0	0	0	0	0	0	0	0	0	0	0
1990-91	0	0	0	0	0	0	0	0	0	0	0	0	0
1991-92	0	0	0	0	0	0	0	0	0	0	0	0	0
1992-93	0	0	0	0	0	0	0	0	0	0	0	0	0
1993-94	0	0	0	0	0	0	0	0	0	0	0	0	0
1994-95	0	0	0	0	0	0	0	0	0	0	0	0	0
1995-96	0	0	0	0	0	0	0	0	0	0	0	0	0
1996-97	0	0	0	0	0	0	0	0	0	0	0	0	0
1997-98	0	0	0	0	0	0	0	0	0	0	0	0	0
1998-99	0	0	0	0	0	0	0	0	0	0	0	0	0
1999-00	0	0	0	0	0	0	0	0	0	0	0	0	0
2000-01	0	0	0	0	0	0	0	0	0	0	0	0	0
2001-02	0	0	0	0	0	0	0	0	0	0	0	0	0
2002-03	0	0	0	0	0	0	0	0	0	0	0	0	0
2003-04	0	0	0	0	0	0	0	0	0	0	0	0	0
2004-05	0	0	0	0	0	0	0	0	0	0	0	0	0
2005-06	0	0	0	0	0	0	0	0	0	0	0	0	0
2006-07	0	0	0	0	0	0	0	0	0	0	0	0	0
2007-08	0	0	0	0	0	0	0	0	0	0	0	0	0
2008-09	0	0	0	0	0	0	0	0	0	0	0	0	0
2009-	0	0	0	0	0	0	0	0	0	0	0	0	0

WBAN : 40504

**COOLING DEGREE DAYS (base 65°F) 2009 POHNPEI (PTTP)**

YEAR	JAN	FEB	MAR	APR	MAY	JUN	JUL	AUG	SEP	OCT	NOV	DEC	TOTAL
1980	531	488	557	530	502	507	514	512	487	515	511	544	6198
1981	526	474	540	519	546	503	509	521	513	530	511	531	6223
1982	512	472	527	508	509	507	481	491	469	495	486	537	5994
1983	513	473	548	562	609	544	519	519	509	511	512	516	6335
1984	497	488	559	547	576	499	520	504	490	504	479	528	6191
1985	513	481	544	487	535	489	490	496	495	501	500	519	6050
1986	539	474	508	511	493	504	502	516	485	517	500	519	6068
1987	523	463	506	498	532	492	477	502	486	524	493	524	6020
1988	523	507	556	516	517	487	504	507	475	477	468	486	6023
1989	502	454	497	493	494	484	513	495	488	515	514	495	5944
1990	526	448	536	504	513	500	507	500	468	511	489	479	5981
1991	488	449	465	490	498	491	518	514	467	481	428	456	5745
1992	441	440	471	488	534	503	501	516	494	504	465	488	5845
1993	460	430	467	458	493	479	493	469	474	478	470	450	5621
1994	482	461	508	496	501	484	485	507	452	494	505	493	5868
1995	493	445	529	502	525	493	517	532	519	493	492	524	6064
1996	487	496	522	461	471	470	513	494	489	499	485	504	5891
1997	481	434	518	482	515	489	488	475	458	478	465	476	5759
1998	478	410	505	513	491	491	494	486	467	479	452	453	5719
1999	438	410	435	430	454	450	435	440	433	449	415	445	5234
2000	445	412	439	443	456	466	478	458	458	478	491	472	5496
2001	486	460	532	510	515	515	519	537	533	516	501	504	6128
2002	522	449	540	494	528	501	537	546	496	550	501	516	6180
2003	504	478	532	484	494	491	506	526	485	533	522	501	6056
2004	522	479	513	497	515	490	516	508	500	527	496	484	6047
2005	487	490	519	482	503	494	532	536	496	530	526	538	6133
2006	516	478	525	505	518	511	482	502	518	521	497	502	6075
2007	517	448	518	490	522	504	521	501	487	495	478	511	5992
2008	526	480	512	499	469	447	469	481	451	470	450	469	5723
2009	477	447	463	448	498	482	484	523	482	497	491	469	5761

**SNOWFALL (inches) 2009 POHNPEI (PTTP)**

YEAR	JUL	AUG	SEP	OCT	NOV	DEC	JAN	FEB	MAR	APR	MAY	JUN	TOTAL
1980-81	0.0	0.0	0.0	0.0	0.0	0.0	0.0	0.0	0.0	0.0	0.0	0.0	0.0
1981-82	0.0	0.0	0.0	0.0	0.0	0.0	0.0	0.0	0.0	0.0	0.0	0.0	0.0
1982-83	0.0	0.0	0.0	0.0	0.0	0.0	0.0	0.0	0.0	0.0	0.0	0.0	0.0
1983-84	0.0	0.0	0.0	0.0	0.0	0.0	0.0	0.0	0.0	0.0	0.0	0.0	0.0
1984-85	0.0	0.0	0.0	0.0	0.0	0.0	0.0	0.0	0.0	0.0	0.0	0.0	0.0
1985-86	0.0	0.0	0.0	0.0	0.0	0.0	0.0	0.0	0.0	0.0	0.0	0.0	0.0
1986-87	0.0	0.0	0.0	0.0	0.0	0.0	0.0	0.0	0.0	0.0	0.0	0.0	0.0
1987-88	0.0	0.0	0.0	0.0	0.0	0.0	0.0	0.0	0.0	0.0	0.0	0.0	0.0
1988-89	0.0	0.0	0.0	0.0	0.0	0.0	0.0	0.0	0.0	0.0	0.0	0.0	0.0
1989-90	0.0	0.0	0.0	0.0	0.0	0.0	0.0	0.0	0.0	0.0	0.0	0.0	0.0
1990-91	0.0	0.0	0.0	0.0	0.0	0.0	0.0	0.0	0.0	0.0	0.0	0.0	0.0
1991-92	0.0	0.0	0.0	0.0	0.0	0.0	0.0	0.0	0.0	0.0	0.0	0.0	0.0
1992-93	0.0	0.0	0.0	0.0	0.0	0.0	0.0	0.0	0.0	0.0	0.0	0.0	0.0
1993-94	0.0	0.0	0.0	0.0	0.0	0.0	0.0	0.0	0.0	0.0	0.0	0.0	0.0
1994-95	0.0	0.0	0.0	0.0	0.0	0.0	0.0	0.0	0.0	0.0	0.0	0.0	0.0
1995-96	0.0	0.0	0.0	0.0	0.0	0.0	0.0	0.0	0.0	0.0	0.0	0.0	0.0
1996-97	0.0	0.0	0.0	0.0	0.0	0.0	0.0	0.0	0.0	0.0	0.0	0.0	0.0
1997-98	0.0	0.0	0.0	0.0	0.0	0.0	0.0	0.0	0.0	0.0	0.0	0.0	0.0
1998-99	0.0	0.0	0.0	0.0	0.0	0.0	0.0	0.0	0.0	0.0	0.0	0.0	0.0
1999-00	0.0	0.0	0.0	0.0	0.0	0.0	0.0	0.0	0.0	0.0	0.0	0.0	0.0
2000-01	0.0	0.0	0.0	0.0	0.0	0.0	0.0	0.0	0.0	0.0	0.0	0.0	0.0
2001-02	0.0	0.0	0.0	0.0	0.0	0.0	0.0	0.0	0.0	0.0	0.0	0.0	0.0
2002-03	0.0	0.0	0.0	0.0	0.0	0.0	0.0	0.0	0.0	0.0	0.0	0.0	0.0
2003-04	0.0	0.0	0.0	0.0	0.0	0.0	0.0	0.0	0.0	0.0	0.0	0.0	0.0
2004-05	0.0	0.0	0.0	0.0	0.0	0.0	0.0	0.0	0.0	0.0	0.0	0.0	0.0
2005-06	0.0	0.0	0.0	0.0	0.0	0.0	0.0	0.0	0.0	0.0	0.0	0.0	0.0
2006-07	0.0	0.0	0.0	0.0	0.0	0.0	0.0	0.0	0.0	0.0	0.0	0.0	0.0
2007-08	0.0	0.0	0.0	0.0	0.0	0.0	0.0	0.0	0.0	0.0	0.0	0.0	0.0
2008-09	0.0	0.0	0.0	0.0	0.0	0.0	0.0	0.0	0.0	0.0	0.0	0.0	0.0
2009-	0.0	0.0	0.0	0.0	0.0	0.0	0.0	0.0	0.0	0.0	0.0	0.0	0.0
POR= 59 YRS	0.0	0.0	0.0	0.0	0.0	0.0	0.0	0.0	0.0	0.0	0.0	0.0	0.0

WBAN : 40504

**REFERENCE NOTES :**

<p>PAGE 1: THE TEMPERATURE GRAPH SHOWS NORMAL MAXIMUM AND NORMAL MINIMUM DAILY TEMPERATURES (SOLID CURVES) AND THE ACTUAL DAILY HIGH AND LOW TEMPERATURES (VERTICAL BARS).</p> <p>PAGE 2 AND 3: H/C INDICATES HEATING AND COOLING DEGREE DAYS. RH INDICATES RELATIVE HUMIDITY W/O INDICATES WEATHER AND OBSTRUCTIONS S INDICATES SUNSHINE. PR INDICATES PRESSURE. CLOUDINESS ON PAGE 3 IS THE SUM OF THE CEILOMETER AND SATELLITE DATA NOT TO EXCEED EIGHT EIGHTHS(OKTAS).</p> <p>GENERAL: T INDICATES TRACE PRECIPITATION, AN AMOUNT GREATER THAN ZERO BUT LESS THAN THE LOWEST REPORTABLE VALUE. + INDICATES THE VALUE ALSO OCCURS ON EARLIER DATES. BLANK ENTRIES DENOTE MISSING OR UNREPORTED DATA. NORMALS ARE 30-YEAR AVERAGES (1971 - 2000). ASOS INDICATES AUTOMATED SURFACE OBSERVING SYSTEM. PM INDICATES THE LAST DAY OF THE PREVIOUS MONTH. POR (PERIOD OF RECORD) BEGINS WITH THE JANUARY DATA MONTH AND IS THE NUMBER OF YEARS USED TO COMPUTE THE MEAN. INDIVIDUAL MONTHS WITHIN THE POR MAY BE MISSING. WHEN THE POR FOR A NORMAL IS LESS THAN 30 YEARS, THE NORMAL IS PROVISIONAL AND IS BASED ON THE NUMBER OF YEARS INDICATED. 0.* OR * INDICATES THE VALUE OR MEAN-DAYS-WITH IS BETWEEN 0.00 AND 0.05. CLOUDINESS FOR ASOS STATIONS DIFFERS FROM THE NON-ASOS OBSERVATION TAKEN BY A HUMAN OBSERVER. ASOS STATION CLOUDINESS IS BASED ON TIME-AVERAGED CEILOMETER DATA FOR CLOUDS AT OR BELOW 12,000 FEET AND ON SATELLITE DATA FOR CLOUDS ABOVE 12,000 FEET. THE NUMBER OF DAYS WITH CLEAR, PARTLY CLOUDY, AND CLOUDY CONDITIONS FOR ASOS STATIONS IS THE SUM OF THE CEILOMETER AND SATELLITE DATA FOR THE SUNRISE TO SUNSET PERIOD.</p>	<p>GENERAL CONTINUED: CLEAR INDICATES 0 - 2 OKTAS, PARTLY CLOUDY INDICATES 3 - 6 OKTAS, AND CLOUDY INDICATES 7 OR 8 OKTAS. WHEN AT LEAST ONE OF THE ELEMENTS (CEILOMETER OR SATELLITE) IS MISSING, THE DAILY CLOUDINESS IS NOT COMPUTED. WIND DIRECTION IS RECORDED IN TENS OF DEGREES (2 DIGITS) CLOCKWISE FROM TRUE NORTH. "00" INDICATES CALM. "36" INDICATES TRUE NORTH. RESULTANT WIND IS THE VECTOR AVERAGE OF THE SPEED AND DIRECTION. AVERAGE TEMPERATURE IS THE SUM OF THE MEAN DAILY MAXIMUM AND MINIMUM TEMPERATURE DIVIDED BY 2. SNOWFALL DATA COMPRISE ALL FORMS OF FROZEN PRECIPITATION, INCLUDING HAIL. A HEATING (COOLING) DEGREE DAY IS THE DIFFERENCE BETWEEN THE AVERAGE DAILY TEMPERATURE AND 65 F. DRY BULB IS THE TEMPERATURE OF THE AMBIENT AIR. DEW POINT IS THE TEMPERATURE TO WHICH THE AIR MUST BE COOLED TO ACHIEVE 100 PERCENT RELATIVE HUMIDITY. WET BULB IS THE TEMPERATURE THE AIR WOULD HAVE IF THE MOISTURE CONTENT WAS INCREASED TO 100 PERCENT RELATIVE HUMIDITY.</p> <p>ON JULY 1, 1996, THE NATIONAL WEATHER SERVICE BEGAN USING THE "METAR" OBSERVATION CODE THAT WAS ALREADY EMPLOYED BY MOST OTHER NATIONS OF THE WORLD. THE MOST NOTICEABLE DIFFERENCE IN THIS ANNUAL PUBLICATION WILL BE THE CHANGE IN UNITS FROM TENTHS TO EIGHTS(OKTAS) FOR REPORTING THE AMOUNT OF SKY COVER.</p> <p><b>NOTE:</b> The "Period of Record:(POR) for all "averages" is based on the "Summary of the Day First Order Station" and "Cooperative Summary of the Day" archives.</p>
---	--

# 2009

## POHNPEI (PONAPE)

### EASTERN CAROLINE ISLANDS, PACIFIC (PTTP)

Pohnpei, about 129 square miles in area, is a nearly circular island of volcanic origin, encircled by coral barrier reefs, and covered with lush, tropical vegetation. The island, located less than 500 miles north of the equator, rises from the Pacific Ocean to an elevation of 2,595 feet, the highest point in the Caroline Islands. The topography is a complicated system of ridges and valleys, interlaced with small rivers and intermittent streams, and covered with tall grasses, tropical trees and flowers, and the coconut palms which are the backbone of the island economy. The interior of the island is covered by a rain forest which acts as a watershed area supplying fresh water the year-round.

The Weather Station lies a little north of the center of a bowl-shaped valley, about 3 miles south of the Pacific Ocean. Encircling it on a radius of 1 to 3 miles are volcanic outcroppings which rise rapidly from the ocean to an average elevation of about 2,100 feet in the east, south, and southwest, but to only about 700 feet to the west and northwest. With the exception of the cliff area in the northwest, the vegetation is lush and extremely dense. The valley is relatively level compared to the rest of the island. A small stream, oriented northeast-southwest lies about one-eighth of a mile to the east of the station.

From about November to June the climate of Pohnpei is chiefly influenced by the northeasterly trade winds. Wind speeds in the vicinity of the weather station, Pohnpei, are reduced somewhat due to the surrounding terrain. By about April the trades begin to diminish in strength, and by July have given way to the lighter and more variable winds of the doldrums. Between July and November the island is frequently under the influence of the Intertropical Convergence Zone (ITCZ - also called the Intertropical Front) which has moved northward into the area. This is also the season when moist southerly winds and tropical disturbances, many of them associated with the ITCZ, are most frequent and when humidities are often oppressively high.

Rainfall at Pohnpei is heavy and frequent throughout the year, averaging 192 inches annually. The wettest period is April and May. Measurable rain (.01 inch or more) falls on about 300 days a year.

The temperature is remarkably uniform throughout the year, with only slightly more than 1 degree separating the averages of the warmest and coolest months. High temperatures normally range in the mid to upper 80s and lows in the low to mid 70s. Temperature extremes above 90 degrees and below 70 degrees have occurred in every month of the year. Humidities are usually high throughout the year.

On most days, cumulus clouds predominate and usually cover more than eight-tenths of the sky. Days are normally cloudier than nights. High clouds, such as cirrus or cirrostratus often form and are obscured by clouds at lower altitudes. Clouds at middle heights, usually altocumulus, sometimes combined with altostratus, occur quite frequently, especially if there are tropical disturbances in the vicinity.

Although Pohnpei is located within the spawning grounds of typhoons, the major typhoon tracks of the Western Pacific lie well to the north and west. Typhoons have caused extensive damage to crops and buildings on the island on several occasions.

The steep slopes surrounding the Weather Station reduce the wind speed. They can cause gentle up and downslope air currents which augment the land and sea breezes. The temperature and humidity are also greatly influenced by the reduced circulation and dense vegetation.

# Station Location

# POHNPEI

LOCATION	Occupied From	Occupied To	Airline Distances and Directions from previous Location	Latitude		Longitude		ELEVATION ABOVE										REMARKS	
								SEA LEVEL	GROUND										AUTOMATIC OBSERVING EQUIPMENT *
									GROUND TEMPERATURE SITE	WIND INSTRUMENT	EXTREME THERMOMETERS	PSYCHROMETER	SUNSHINE SWITCH	TIPPING BUCKET RAIN GAUGE	WEIGHING RAIN GAUGE	8 INCH RAIN GAUGE	HYGROTHERMOMETER		
Ponape Island	1900	1913															German administration. Meteorological observations taken intermittently.		
Ponape Island	1/1927	12/1943		6° 58'	158° 13'	99	5										Japanese administration. Eight observations daily to 1935; six observations daily through 1939; and three observations daily afterward.		
Ponape Island	1/1946	6/1950		6° 58'	158° 13'	92											U.S. Naval administration.		
Agriculture Building Ponape Island	6/1950	6/30/51	2600 ft. SSW	6° 58'	158° 13'	112	69	3	3						39		U.S. Naval administration.		
Agriculture Building Ponape Island	7/01/51	3/20/56	No Change	6° 58'	158° 13'	112	69	3	3						a2		U.S. Weather Bureau a. 39 feet until early 1954.		
Air Force Site Ponape Island	3/21/56	1/14/58	1/4 mi. NNE	6° 58'	158° 13'	119	28	3	3						3				
Weather Bureau Building Ponape Island +	1/14/58	Present	170 ft. S	6° 58'	158° 13'	c123	32 b33	4	4	%6	3	NA	3	NA	NA	NA	b. Effective 5/1/61. % - Commissioned 3/1/65. c. Ground elevation.		

+ Weather Service Bldg. Ponape Island effective 3/6/85



This page intentionally left blank.

**For Hard Copy Subscription:**

Price and ordering information: NCDC Subscribing Service Center, 310 State Route 956, Building 300, Rocket Center, WV 26726.

**INQUIRES/COMMENTS CALL: Toll Free (866) 742-3322**

Visit our Web Site for other weather data: [www.ncdc.noa.gov](http://www.ncdc.noa.gov)

**Non-Subscription Request:**

NCDC Customer Services;

Phone: 828-271-4800

Fax: 828-271-4876

Email: [ncdc.orders@noaa.gov](mailto:ncdc.orders@noaa.gov)

OFFICIAL BUSINESS

PENALTY FOR PRIVATE USE \$300

CHANGE SERVICE REQUESTED

**FIRST CLASS  
POSTAGE & FEES PAID  
United States Department of Commerce  
NOAA Permit No. G - 19**