

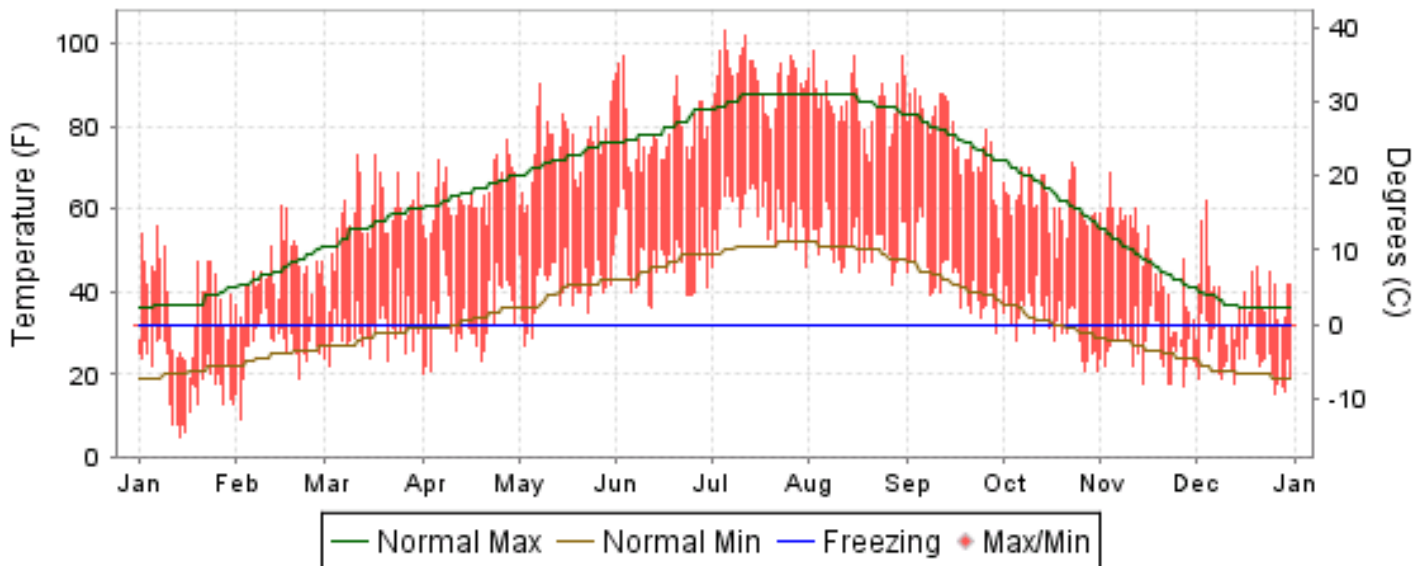


2007 LOCAL CLIMATOLOGICAL DATA ANNUAL SUMMARY WITH COMPARATIVE DATA

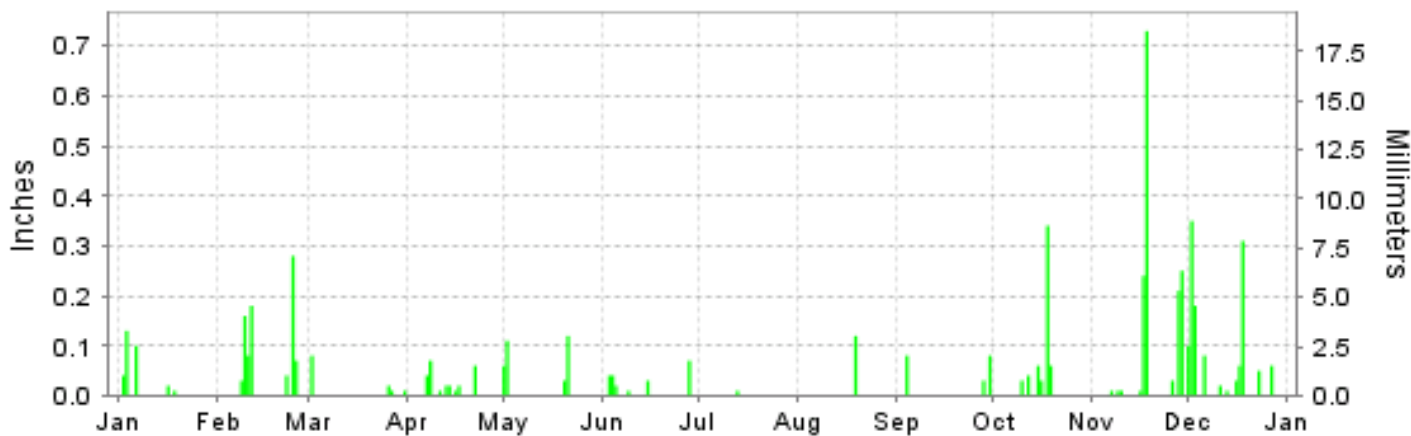
ISSN 0198-554X

YAKIMA, WASHINGTON (KYKM)

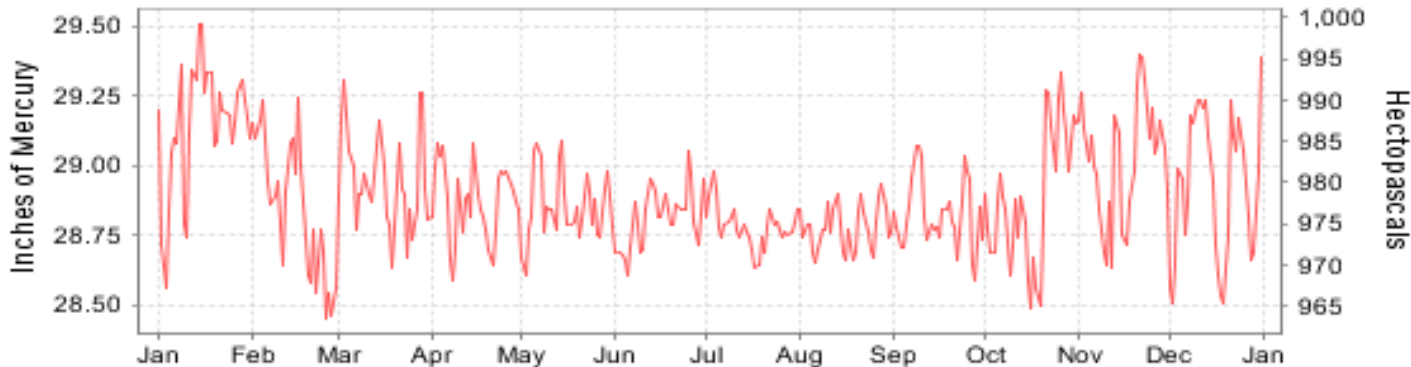
Daily Max/Min Temperature



Daily Precipitation



Daily Station Pressure



I CERTIFY THAT THIS IS AN OFFICIAL PUBLICATION OF THE NATIONAL OCEANIC AND ATMOSPHERIC ADMINISTRATION, AND IS COMPILED FROM RECORDS ON FILE AT THE NATIONAL CLIMATIC DATA CENTER.

NATIONAL
OCEANIC AND
ATMOSPHERIC ADMINISTRATION

NATIONAL
ENVIRONMENTAL SATELLITE, DATA
AND INFORMATION SERVICE

NATIONAL
CLIMATIC DATA CENTER
ASHEVILLE, NORTH CAROLINA

Thomas R. Karl
DIRECTOR
NATIONAL CLIMATIC DATA CENTER

METEOROLOGICAL DATA FOR 2007

YAKIMA (KYKM)

LATITUDE: 46° 33'N LONGITUDE: -120° 32'W ELEVATION (FT): GRND: 1050 BARO: 1075 TIME ZONE: PACIFIC (UTC -8) WBAN: 24243

ELEMENT		JAN	FEB	MAR	APR	MAY	JUN	JUL	AUG	SEP	OCT	NOV	DEC	YEAR	
TEMPERATURE °F	MEAN DAILY MAXIMUM	37.1	44.7	58.3	63.7	75.3	79.3	92.2	85.7	77.3	61.6	47.9	38.2	63.4	
	HIGHEST DAILY MAXIMUM	56	61	73	77	91	97	103	98	89	71	69	62	103	
	DATE OF OCCURRENCE	07	15	17+	27	31	03	05	02	03	23	04	04	JUL 05	
	MEAN DAILY MINIMUM	18.6	26.8	30.6	33.6	41.1	47.4	58.5	51.4	43.0	32.6	26.5	23.7	36.2	
	LOWEST DAILY MINIMUM	5	9	22	20	27	36	46	42	30	21	17	15	5	
	DATE OF OCCURRENCE	14	02	02	01	03	12	31+	27	29	31+	27	26	JAN 14	
	AVERAGE DRY BULB	27.9	35.8	44.5	48.7	58.2	63.4	75.4	68.6	60.2	47.1	37.2	31.0	49.8	
	MEAN WET BULB	25.3	32.9	39.2	41.6	48.6	52.8	60.1	56.5	49.9	41.6	33.4	29.4	42.6	
	MEAN DEW POINT	20.8	28.8	31.4	31.4	35.7	41.4	47.8	45.8	39.9	35.6	28.3	26.0	34.4	
	NUMBER OF DAYS WITH:														
	MAXIMUM >= 90°	0	0	0	0	2	4	22	9	0	0	0	0	0	37
	MAXIMUM <= 32°	14	1	0	0	0	0	0	0	0	0	4	10	29	
MINIMUM <= 32°	31	26	22	17	3	0	0	0	1	14	25	29	168		
MINIMUM <= 0°	0	0	0	0	0	0	0	0	0	0	0	0	0		
H/C	HEATING DEGREE DAYS	1146	813	628	482	215	110	0	20	175	548	827	1048	6012	
	COOLING DEGREE DAYS	0	0	0	0	9	68	330	138	35	0	0	0	580	
RH	MEAN (PERCENT)	77	78	62	53	44	47	40	47	51	68	74	82	60	
	HOUR 04 LST	83	86	81	76	70	74	66	76	73	86	85	85	78	
	HOUR 10 LST	74	72	51	38	29	33	27	32	34	51	64	77	49	
	HOUR 16 LST	68	65	44	33	24	28	22	26	31	52	67	79	45	
	HOUR 22 LST	80	83	70	65	55	58	49	55	62	80	80	86	69	
S	PERCENT POSSIBLE SUNSHINE														
W/O	NUMBER OF DAYS WITH:														
	HEAVY FOG(VISBY <= 1/4 MI)	3	2	0	0	0	0	0	0	0	1	2	5	13	
	THUNDERSTORMS	0	0	0	0	0	1	1	0	0	0	0	0	2	
CLOUDNESS	SUNRISE-SUNSET: (OKTAS)														
	CEILOMETER (<= 12,000 FT.)														
	SATELLITE (> 12,000 FT.)														
	MIDNIGHT-MIDNIGHT: (OKTAS)														
	CEILOMETER (<= 12,000 FT.)														
SATELLITE (> 12,000 FT.)															
NUMBER OF DAYS WITH:															
CLEAR															
PARTLY CLOUDY															
CLOUDY															
PR	MEAN STATION PRESS. (IN.)	29.15	28.85	28.95	28.87	28.85	28.82	28.78	28.79	28.83	28.90	29.02	28.92	28.89	
	MEAN SEA-LEVEL PRESS. (IN.)	30.33	30.02	30.11	30.02	29.99	29.94	29.90	29.91	29.96	30.05	30.19	30.10	30.04	
WINDS	RESULTANT SPEED (MPH)	2.1	2.4	2.7	3.0	3.0	3.3	2.9	3.1	3.5	2.8	2.6	1.5	2.6	
	RES. DIR. (TENS OF DEGS.)	26	24	24	26	26	27	27	29	29	26	27	26	27	
	MEAN SPEED (MPH)	4.5	4.5	6.6	6.4	6.7	6.9	6.8	6.2	6.1	4.5	3.8	3.3	5.5	
	PREVAIL.DIR.(TENS OF DEGS.)	26	25	27	25	28	27	26	26	27	28	26	27	28	
	MAXIMUM 2-MINUTE WIND														
	SPEED (MPH)	45	29	31	38	30	33	24	24	29	31	35	29	45	
	DIR. (TENS OF DEGS.)	28	27	18	24	23	26	19	19	32	29	30	30	28	
	DATE OF OCCURRENCE	07	20	19	09	27	03	20	30	05	24	12	20	JAN 07	
	MAXIMUM 5-SECOND WIND:														
	SPEED (MPH)	60	36	40	46	33	43	30	32	38	40	45	58	60	
DIR. (TENS OF DEGS.)	25	19	18	24	25	26	31	29	31	30	29	15	25		
DATE OF OCCURRENCE	07	19	19	09	27	03	07	25	05	24	12	18	JAN 07		
PRECIPITATION	WATER EQUIVALENT:														
	TOTAL (IN.)	0.30	0.84	0.12	0.25	0.32	0.21	0.01	0.12	0.19	0.56	1.50	1.25	5.67	
	GREATEST 24-HOUR (IN.)	0.17	0.31	0.08	0.07	0.17	0.07	0.01	0.12	0.08	0.39	0.73	0.46	0.73	
	DATE OF OCCURRENCE	02-03	24-25	02	08	01-02	28-29	13	19	30	18-19	18	02-03	NOV 18	
	NUMBER OF DAYS WITH:														
PRECIPITATION 0.01	5	7	4	8	4	6	1	1	3	6	9	11	65		
PRECIPITATION 0.10	2	3	0	0	2	0	0	1	0	1	4	4	17		
PRECIPITATION 1.00	0	0	0	0	0	0	0	0	0	0	0	0	0		
SNOWFALL	SNOW,ICE PELLETS,HAIL														
	TOTAL (IN.)	0.6	1.1	1.3	0.0	0.0	0.0	0.0	0.0	0.0	0.0	9.0	7.7	19.7	
	GREATEST 24-HOUR (IN.)	0.3	1.0	1.3	0.0	0.0	0.0	0.0	0.0	0.0	0.0	5.6	2.1	5.6	
	DATE OF OCCURRENCE	16	24	02								29	18	NOV 29	
	MAXIMUM SNOW DEPTH (IN.)	3	1	T	0	0	0	0	0	0	0	6	6	6	
	DATE OF OCCURRENCE	01	24	02								29	01	DEC 01	
NUMBER OF DAYS WITH:															
SNOWFALL >= 1.0	0	1	1	0	0	0	0	0	0	0	2	2	6		

NORMALS, MEANS, AND EXTREMES

YAKIMA (KYKM)

LATITUDE:
46° 33'N

LONGITUDE:
-120° 32'W

ELEVATION (FT):
GRND: 1050 BARO: 1075

TIME ZONE:
PACIFIC (UTC -8)

WBAN: 24243

ELEMENT		POR	JAN	FEB	MAR	APR	MAY	JUN	JUL	AUG	SEP	OCT	NOV	DEC	YEAR
TEMPERATURE °F	NORMAL DAILY MAXIMUM	30	37.7	45.6	56.0	64.1	72.4	79.6	87.2	86.5	77.6	64.3	47.7	37.1	63.0
	MEAN DAILY MAXIMUM	61	37.4	45.8	55.5	63.9	72.7	79.8	87.7	86.2	77.5	64.2	48.1	38.0	63.1
	HIGHEST DAILY MAXIMUM	61	68	69	80	92	102	105	109	110	100	88	73	67	110
	YEAR OF OCCURRENCE		1977	1947	1960	1977	1986	1992	2006	1971	1988	1992	1989	1980	AUG 1971
	MEAN OF EXTREME MAXS.	61	54.4	59.2	68.4	78.6	89.0	94.7	100.4	98.6	91.0	77.7	63.2	54.5	77.5
	NORMAL DAILY MINIMUM	30	20.5	24.7	28.9	33.2	40.0	46.2	50.9	50.1	42.3	32.9	26.3	20.5	34.7
	MEAN DAILY MINIMUM	61	20.9	25.6	29.9	34.8	42.3	48.8	53.2	51.7	43.9	34.7	27.7	22.8	36.4
	LOWEST DAILY MINIMUM	61	-21	-25	-1	20	25	30	34	35	24	4	-13	-17	-25
	YEAR OF OCCURRENCE		1950	1950	1960	2007	1999	1984	1971	1960	1985	2002	1985	1964	FEB 1950
	MEAN OF EXTREME MINS.	61	3.0	10.2	19.3	24.2	29.6	36.5	41.4	41.3	32.8	22.3	14.5	6.8	23.5
	NORMAL DRY BULB	30	29.1	35.2	42.5	48.7	56.2	62.9	69.1	68.3	60.0	48.6	37.0	28.8	48.9
	MEAN DRY BULB	61	29.2	35.7	42.7	49.3	57.5	64.4	70.5	69.0	60.7	49.4	37.9	30.4	49.7
	MEAN WET BULB	24	28.8	31.7	37.7	42.4	48.2	53.2	57.7	56.9	51.0	42.3	33.9	27.4	42.6
	MEAN DEW POINT	24	26.2	27.6	31.3	34.7	40.1	44.6	48.9	48.8	43.9	36.4	30.3	25.0	36.5
	NORMAL NO. DAYS WITH:														
MAXIMUM >= 90	30	0.0	0.0	0.0	*	1.1	4.2	13.4	11.4	2.0	0.0	0.0	0.0	32.1	
MAXIMUM <= 32	30	9.5	3.0	0.1	0.0	0.0	0.0	0.0	0.0	0.0	0.0	1.9	9.9	24.4	
MINIMUM <= 32	30	27.3	23.0	19.7	11.6	2.9	0.2	0.0	0.0	1.3	12.9	22.2	28.1	149.2	
MINIMUM <= 0	30	1.5	0.6	0.0	0.0	0.0	0.0	0.0	0.0	0.0	0.0	0.3	1.2	3.6	
H/C	NORMAL HEATING DEG. DAYS	30	1097	821	682	474	275	112	28	30	162	493	824	1106	6104
	NORMAL COOLING DEG. DAYS	30	0	0	0	1	18	65	171	148	28	0	0	0	431
RH	NORMAL (PERCENT)	30	81	75	63	54	51	49	46	49	57	65	77	82	62
	HOURLY 04 LST	30	84	84	79	73	72	72	69	71	78	81	84	85	78
	HOURLY 10 LST	30	81	74	57	44	41	39	37	40	45	55	75	82	56
	HOURLY 16 LST	30	72	60	43	35	32	31	27	28	33	41	63	76	45
	HOURLY 22 LST	30	82	79	70	60	60	57	55	52	56	67	73	81	68
S	PERCENT POSSIBLE SUNSHINE														
W/O	MEAN NO. DAYS WITH:														
	HEAVY FOG (VISBY <= 1/4 MI) THUNDERSTORMS	44 60	5.1 0.0	2.1 0.0	0.6 0.0	0.1 0.4	0.0 1.1	0.0 1.5	0.0 1.3	0.0 1.2	0.1 0.5	0.5 0.1	3.2 0.0	6.1 0.0	17.8 6.1
CLOUDNESS	MEAN:														
	SUNRISE-SUNSET (OKTAS)	50	6.3	5.9	5.4	5.2	4.7	4.2	2.5	2.7	3.1	4.5	5.8	6.2	4.7
	MIDNIGHT-MIDNIGHT (OKTAS)	29	5.9	5.3	4.7	4.6	4.1	3.8	2.4	2.5	2.8	3.9	5.4	5.8	4.3
	MEAN NO. DAYS WITH:														
	CLEAR	50	4.0	4.4	6.2	6.2	8.4	10.3	18.7	17.5	15.0	9.5	5.1	4.0	109.3
PARTLY CLOUDY	50	5.4	5.8	8.3	9.4	10.5	9.8	8.0	7.8	7.9	8.3	6.0	5.2	92.4	
CLOUDY	50	21.6	18.0	16.6	14.4	12.1	9.9	4.3	5.6	7.1	13.2	18.9	21.8	163.5	
PR	MEAN STATION PRESSURE (IN)	24	28.98	28.94	28.87	28.86	28.83	28.82	28.82	28.82	28.85	28.91	28.93	29.00	28.89
	MEAN SEA-LEVEL PRES. (IN)	24	30.16	30.11	30.03	30.00	29.96	29.94	29.94	29.94	29.98	30.06	30.10	30.18	30.03
WINDS	MEAN SPEED (MPH)	24	4.7	5.8	7.0	7.8	7.8	7.9	7.6	7.0	6.8	6.0	5.4	4.3	6.5
	PREVAIL.DIR (TENS OF DEGS)	28	27	28	28	28	28	27	28	27	28	28	28	27	28
	MAXIMUM 2-MINUTE:														
	SPEED (MPH)	11	45	39	37	41	35	37	30	45	35	40	35	39	45
	DIR. (TENS OF DEGS)		28	03	26	28	25	29	31	18	27	27	30	20	28
	YEAR OF OCCURRENCE		2007	2006	2005	2004	2002	1998	2002	2003	2000	2001	2007	2006	JAN 2007
	MAXIMUM 5-SECOND														
SPEED (MPH)	11	60	55	48	53	40	44	39	53	43	48	45	58	60	
DIR. (TENS OF DEGS)		25	03	26	27	25	30	26	18	27	28	29	15	25	
YEAR OF OCCURRENCE		2007	2006	2005	2004	2002	1998	2002	2003	2000	2003	2007	2007	JAN 2007	
PRECIPITATION	NORMAL (IN)	30	1.17	0.80	0.70	0.53	0.51	0.62	0.22	0.36	0.39	0.53	1.05	1.38	8.26
	MAXIMUM MONTHLY (IN)	61	3.68	2.46	2.63	1.83	2.76	2.53	0.71	2.10	2.07	2.22	2.83	5.59	5.59
	YEAR OF OCCURRENCE		1995	1961	1957	1995	1948	1991	1966	1975	1986	1950	1973	1996	DEC 1996
	MINIMUM MONTHLY (IN)	61	0.09	T	0.01	T	0.01	0.01	T	0.00	0.00	0.00	T	0.07	0.00
	YEAR OF OCCURRENCE		1985	1988	1973	1985	2001	2003	1988	1955	1986	1978	1990	1976	SEP 1986
	MAXIMUM IN 24 HOURS (IN)	61	1.37	0.87	0.74	1.25	0.90	1.56	0.66	1.74	1.49	1.05	2.03	1.58	2.03
	YEAR OF OCCURRENCE		1963	1961	1987	1974	1986	1982	1963	1990	1986	1982	1996	1977	NOV 1996
	NORMAL NO. DAYS WITH:														
	PRECIPITATION >= 0.01	30	9.4	7.7	6.9	5.0	5.6	4.8	2.6	2.7	3.5	4.5	8.8	9.4	70.9
PRECIPITATION >= 1.00	30	0.0	0.0	0.0	*	0.0	0.1	0.0	0.1	*	*	0.1	0.1	0.4	
SNOWFALL	NORMAL (IN)	30	7.0	3.3	1.3	0.*	0.*	0.0	0.0	0.0	0.0	0.2	3.3	9.5	24.6
	MAXIMUM MONTHLY (IN)	61	26.6	16.5	10.8	0.2	T	0.0	0.0	T	0.0	2.9	23.5	37.5	37.5
	YEAR OF OCCURRENCE		1950	1949	1971	1993	1994				2006	1991	1996	1964	DEC 1964
	MAXIMUM IN 24 HOURS (IN)	61	13.6	8.2	7.4	0.2	T	0.0	0.0	0.0	0.0	2.4	18.9	14.0	18.9
	YEAR OF OCCURRENCE		1963	1994	1951	1993	1994					1991	1996	1964	NOV 1996
	MAXIMUM SNOW DEPTH (IN)	59	21	15	7	0	0	0	0	0	0	2	10	19	21
	YEAR OF OCCURRENCE		1997	1969	1969							1991	2001	1964	JAN 1997
	NORMAL NO. DAYS WITH:														
SNOWFALL >= 1.0	30	2.5	1.1	0.5	0.0	0.0	0.0	0.0	0.0	0.0	0.1	0.9	2.9	8.0	

PRECIPITATION (inches) 2007 YAKIMA (KYKM)

YEAR	JAN	FEB	MAR	APR	MAY	JUN	JUL	AUG	SEP	OCT	NOV	DEC	ANNUAL
1978	2.30	1.30	0.52	0.91	0.28	0.32	0.29	0.38	0.64	0.00	0.94	0.14	8.02
1979	0.91	0.54	0.23	0.14	0.04	0.57	0.04	0.42	0.36	0.74	1.53	1.33	6.85
1980	2.23	1.30	0.29	0.80	0.84	1.12	T	0.29	0.48	0.23	1.00	2.69	11.27
1981	0.95	0.65	0.10	0.01	0.68	0.39	0.29	0.09	0.59	1.16	1.36	2.38	8.65
1982	0.58	1.48	0.34	0.30	0.37	1.70	0.12	0.39	1.08	1.46	0.90	2.15	10.87
1983	1.97	1.59	1.95	0.66	0.30	0.77	0.29	0.44	0.33	0.23	2.77	1.92	13.22
1984	0.13	0.92	1.04	1.05	0.51	1.45	0.13	0.04	0.46	0.16	2.62	0.51	9.02
1985	0.09	0.68	0.62	T	0.46	0.37	0.12	0.03	0.84	0.75	0.92	1.02	5.90
1986	1.82	1.26	0.54	0.05	0.94	0.08	0.25	0.11	2.07	0.38	0.64	0.89	9.03
1987	1.46	0.25	1.44	0.57	0.10	0.05	0.40	T	0.00	0.02	0.68	3.30	8.27
1988	0.68	T	0.21	1.41	0.18	1.00	T	T	0.13	0.05	1.12	0.67	5.45
1989	0.19	1.29	1.71	0.85	0.63	0.05	0.07	0.41	0.09	0.67	0.72	0.21	6.89
1990	1.47	0.11	0.21	0.18	1.13	0.31	0.02	2.00	0.04	0.45	T	0.24	6.16
1991	0.34	0.23	1.16	0.61	0.17	2.53	0.18	0.06	0.08	0.73	1.24	0.28	7.61
1992	0.27	0.62	0.41	0.96	0.04	1.25	0.44	0.25	0.28	0.68	0.98	2.33	8.51
1993	0.91	0.66	0.62	0.50	0.43	0.72	0.58	0.17	0.03	0.07	0.21	1.02	5.92
1994	0.36	1.05	0.04	0.90	1.22	0.66	0.05	0.06	0.09	1.36	0.69	1.27	7.75
1995	3.68	0.32	1.28	1.83	0.62	0.62	0.69	0.14	0.74	0.27	1.54	2.15	13.88
1996	1.31	1.81	0.57	0.22	1.24	0.04	.48	.02	.36	.55	2.59	5.59	14.78
1997	1.15	0.19	0.60	0.29	0.22	0.89	0.04	0.22	0.24	1.72	1.13	0.19	6.88
1998	1.96	1.43	1.09	0.21	1.20	0.10	0.64	0.03	0.06	0.19	0.83	0.69	8.43
1999	1.37	1.32	0.15	0.14	0.26	0.17	0.64	0.75	T	0.40	0.53	0.27	6.00
2000	1.65	1.01	0.60	0.53	0.54	0.13	0.05	T	0.18	0.32	0.70	0.70	6.41
2001	0.54	0.26	0.47	0.51	0.01	1.03	0.03	0.30	0.14	0.36	1.96	1.12	6.73
2002	0.33	0.84	0.21	0.80	0.69	0.71	0.12	T	0.10	0.09	0.46	3.49	7.84
2003	2.21	0.28	0.36	1.28	0.16	T	T	0.44	0.05	0.20	0.10	2.05	7.13
2004	1.55	1.39	0.44	0.25	0.43	0.57	0.46	1.19	0.15	0.62	0.08	1.12	8.25
2005	1.07	0.15	0.56	0.72	1.17	0.09	0.12	0.09	0.37	0.23	1.60	2.38	8.55
2006	1.81	0.64	0.44	0.59	0.82	0.69	0.06	T	0.55	0.26	1.14	2.56	9.56
2007	0.30	0.84	0.12	0.25	0.32	0.21	0.01	0.12	0.19	0.56	1.50	1.25	5.67
POR= 61 YRS	1.28	0.77	0.64	0.53	0.53	0.66	0.19	0.31	0.34	0.54	1.03	1.35	8.17

WBAN : 24243

AVERAGE TEMPERATURE (°F) 2007 YAKIMA (KYKM)

YEAR	JAN	FEB	MAR	APR	MAY	JUN	JUL	AUG	SEP	OCT	NOV	DEC	ANNUAL
1978	32.8	37.9	45.8	49.4	54.8	64.8	71.0	67.5	58.8	49.5	32.3	27.5	49.3
1979	14.8	32.6	44.0	49.6	59.5	65.4	72.1	70.2	64.0	52.9	34.1	34.8	49.5
1980	20.8	33.7	43.7	53.7	58.9	62.1	70.4	66.4	62.6	51.5	40.4	34.8	49.9
1981	39.9	39.3	47.7	49.7	56.8	61.8	69.0	73.1	61.6	48.8	41.2	30.2	51.6
1982	26.2	36.8	43.0	45.8	56.0	66.8	68.7	68.1	60.2	49.0	35.8	29.0	48.8
1983	37.6	40.2	47.8	49.8	60.9	62.9	67.6	70.9	58.1	50.6	42.4	22.2	50.9
1984	31.2	37.8	45.3	47.1	52.4	61.1	70.5	68.8	59.0	47.1	36.1	20.1	48.0
1985	26.4	28.9	41.9	50.8	58.8	64.6	74.9	66.0	55.3	46.7	23.0	19.1	46.4
1986	30.1	35.2	45.6	47.3	57.6	67.4	65.7	72.6	56.9	51.1	38.5	28.5	49.7
1987	28.1	37.6	44.0	52.8	59.6	65.9	67.9	68.5	62.9	50.3	40.1	29.0	50.6
1988	28.8	38.2	42.2	51.1	55.1	62.1	69.2	67.7	59.5	55.1	39.5	28.1	49.7
1989	33.7	26.4	40.0	52.0	56.2	65.8	68.6	66.9	61.0	48.8	41.7	31.4	49.4
1990	36.5	35.2	44.3	53.4	55.0	63.7	73.2	70.1	65.4	46.8	41.6	22.8	50.7
1991	27.7	41.5	40.6	49.2	55.0	60.1	70.6	71.3	63.8	48.6	38.2	34.9	50.1
1992	34.9	40.3	48.1	50.7	60.7	70.0	69.5	70.1	59.1	51.2	38.2	24.5	51.4
1993	23.6	28.8	40.8	47.8	61.5	62.0	63.0	66.6	60.9	51.7	31.4	33.0	47.6
1994	36.3	33.3	44.2	52.6	59.7	62.4	73.8	69.4	64.4	49.6	35.5	32.5	51.1
1995	32.3	40.1	42.9	48.0	59.0	62.6	69.5	64.6	63.6	47.9	41.3	31.3	50.3
1996	26.7	31.5	42.9	49.6	53.2	63.1	72.6	68.7	57.6	47.2	33.8	23.1	47.5
1997	27.1	35.4	43.6	47.6	59.7	62.8	69.2	71.5	62.4	48.0	39.6	29.9	49.7
1998	30.0	39.1	43.8	49.7	58.3	65.1	76.1	71.6	65.3	47.4	41.0	30.7	51.5
1999	34.5	38.3	41.6	47.0	53.6	62.6	67.3	70.6	59.3	47.4	42.9	35.5	50.1
2000	29.9	36.6	42.4	51.5	57.0	64.8	69.4	68.2	59.7	48.7	31.3	28.2	49.0
2001	32.5	34.5	43.8	47.4	58.2	61.6	71.0	71.7	63.8	48.9	39.7	32.9	50.5
2002	34.8	36.9	39.3	48.8	55.2	65.4	72.6	67.7	59.9	46.5	37.8	35.4	50.0
2003	36.8	38.2	45.7	49.0	56.6	67.9	73.9	71.0	63.8	53.5	33.6	29.8	51.7
2004	28.3	36.4	46.1	51.6	57.1	65.7	72.8	71.8	59.8	51.3	37.5	34.4	51.1
2005	30.1	36.2	45.5	50.2	60.1	62.9	70.9	70.9	58.8	50.3	35.6	25.8	49.8
2006	35.3	34.8	41.7	49.0	57.6	65.4	74.0	69.4	61.6	48.8	37.2	27.3	50.2
2007	27.9	35.8	44.5	48.7	58.2	63.4	75.4	68.6	60.2	47.1	37.2	31.0	49.8
POR= 61 YRS	29.2	35.7	42.7	49.3	57.5	64.4	70.5	69.0	60.7	49.4	37.9	30.4	49.7

HEATING DEGREE DAYS (base 65°F) 2007 YAKIMA (KYKM)

YEAR	JUL	AUG	SEP	OCT	NOV	DEC	JAN	FEB	MAR	APR	MAY	JUN	TOTAL
1978-79	6	53	184	470	975	1155	1549	901	641	456	178	72	6640
1979-80	29	4	59	371	919	929	1364	902	654	336	190	109	5866
1980-81	24	41	98	412	731	929	773	712	530	459	255	117	5081
1981-82	40	7	163	497	707	1072	1195	783	675	569	276	72	6056
1982-83	43	30	164	486	868	1111	840	690	527	452	191	90	5492
1983-84	32	2	206	440	672	1320	1043	781	602	531	384	142	6155
1984-85	13	23	199	546	860	1389	1189	1002	709	421	219	61	6631
1985-86	0	32	286	561	1255	1416	1079	828	595	525	291	45	6913
1986-87	58	2	255	424	791	1125	1133	761	642	367	189	72	5819
1987-88	31	19	112	447	739	1108	1116	770	699	413	311	139	5904
1988-89	33	14	197	303	762	1136	963	1073	767	383	269	52	5952
1989-90	26	28	116	497	694	1035	876	827	634	342	307	111	5493
1990-91	15	21	36	558	697	1302	1149	652	749	466	306	153	6104
1991-92	5	12	63	499	795	926	926	710	515	419	159	33	5062
1992-93	9	34	184	427	799	1249	1274	1005	742	505	153	123	6504
1993-94	80	53	172	406	1002	983	883	880	641	373	185	126	5784
1994-95	10	10	53	472	875	1003	1006	695	681	505	193	121	5624
1995-96	7	71	95	526	705	1041	1183	967	677	456	365	92	6185
1996-97	23	23	227	542	931	1292	1166	824	656	514	185	99	6482
1997-98	17	6	98	522	755	1085	1077	720	654	454	222	48	5658
1998-99	0	17	75	537	714	1055	939	741	718	530	358	128	5812
1999-00	50	38	171	538	657	910	1080	817	694	398	247	70	5670
2000-01	32	33	192	498	1006	1136	1003	850	653	521	246	127	6297
2001-02	20	13	85	491	749	988	928	780	790	482	300	79	5705
2002-03	21	31	166	568	808	915	870	746	591	474	274	37	5501
2003-04	8	0	111	354	933	1085	1131	822	576	397	239	98	5754
2004-05	11	14	157	420	819	940	1073	801	600	438	180	106	5559
2005-06	2	7	186	449	877	1206	911	840	716	475	266	56	5991
2006-07	10	17	147	496	826	1163	1146	813	628	482	215	110	6053
2007-	0	20	175	548	827	1048							

WBAN : 24243

COOLING DEGREE DAYS (base 65°F) 2007 YAKIMA (KYKM)

YEAR	JAN	FEB	MAR	APR	MAY	JUN	JUL	AUG	SEP	OCT	NOV	DEC	TOTAL
1978	0	0	0	0	0	73	198	136	5	0	0	0	412
1979	0	0	0	0	12	91	255	174	37	2	0	0	571
1980	0	0	0	2	8	29	198	92	34	2	0	0	365
1981	0	0	0	6	9	28	169	263	66	0	0	0	541
1982	0	0	0	0	6	132	165	131	28	0	0	0	462
1983	0	0	0	0	72	35	119	191	6	0	0	0	423
1984	0	0	0	0	3	33	192	150	25	0	0	0	403
1985	0	0	0	0	32	57	312	71	2	0	0	0	474
1986	0	0	0	0	69	122	87	245	20	0	0	0	543
1987	0	0	0	14	29	110	128	133	56	0	0	0	470
1988	0	0	0	2	11	59	168	105	39	1	0	0	385
1989	0	0	0	0	4	82	146	95	4	0	0	0	331
1990	0	0	0	1	1	79	277	186	53	0	0	0	597
1991	0	0	0	0	1	13	184	215	32	0	0	0	445
1992	0	0	0	0	31	189	156	199	14	5	0	0	594
1993	0	0	0	0	49	42	26	111	54	0	0	0	282
1994	0	0	0	6	27	52	290	153	42	0	0	0	570
1995	0	0	0	0	15	54	156	67	64	0	0	0	356
1996	0	0	0	0	5	39	268	145	12	0	0	0	469
1997	0	0	0	0	29	40	153	214	27	0	0	0	463
1998	0	0	0	1	21	55	353	228	91	0	0	0	749
1999	0	0	0	0	11	62	126	216	8	0	0	0	423
2000	0	0	0	0	7	73	178	141	35	0	0	0	434
2001	0	0	0	0	41	30	209	229	53	0	0	0	562
2002	0	0	0	0	1	99	263	121	20	0	0	0	504
2003	0	0	0	0	21	129	288	190	80	6	0	0	714
2004	0	0	0	0	1	122	264	233	6	0	0	0	626
2005	0	0	0	0	35	51	194	198	9	0	0	0	487
2006	0	0	0	0	48	75	296	161	52	0	0	0	632
2007	0	0	0	0	9	68	330	138	35	0	0	0	580

SNOWFALL (inches) 2007 YAKIMA (KYKM)

YEAR	JUL	AUG	SEP	OCT	NOV	DEC	JAN	FEB	MAR	APR	MAY	JUN	TOTAL
1978-79	0.0	0.0	0.0	0.0	5.8	0.8	13.1	1.9	T	0.0	0.0	0.0	21.6
1979-80	0.0	0.0	0.0	0.0	9.3	11.4	17.6	7.6	1.7	T	0.0	0.0	47.6
1980-81	0.0	0.0	0.0	0.0	0.4	7.5	1.0	3.1	0.0	0.0	0.0	0.0	12.0
1981-82	0.0	0.0	0.0	0.0	0.0	20.6	5.6	0.1	1.9	T	0.0	0.0	28.2
1982-83	0.0	0.0	0.0	0.0	0.6	13.2	5.0	3.1	0.0	T	0.0	0.0	21.9
1983-84	0.0	0.0	0.0	0.0	3.7	16.3	1.2	T	0.0	0.0	T	0.0	21.2
1984-85	0.0	0.0	0.0	T	11.5	7.2	0.2	8.6	0.8	0.0	0.0	0.0	28.3
1985-86	0.0	0.0	0.0	T	10.0	11.5	9.8	7.3	0.0	0.0	T	0.0	38.6
1986-87	0.0	0.0	0.0	0.0	0.3	9.6	7.8	T	0.0	0.0	0.0	0.0	17.7
1987-88	0.0	0.0	0.0	0.0	2.0	10.6	9.2	T	0.0	0.0	0.0	0.0	21.8
1988-89	0.0	0.0	0.0	0.0	T	7.2	0.4	11.4	5.0	0.0	0.0	0.0	24.0
1989-90	0.0	0.0	0.0	0.0	T	0.2	0.4	1.9	T	0.0	0.0	0.0	2.5
1990-91	0.0	0.0	0.0	0.0	0.0	1.0	1.4	T	0.6	T	0.0	0.0	3.0
1991-92	0.0	0.0	0.0	2.9	T	0.6	0.3	0.9	0.0	T	0.0	0.0	4.7
1992-93	0.0	0.0	0.0	0.0	4.2	30.4	11.6	8.3	5.1	0.2	0.0	0.0	59.8
1993-94	0.0	0.0	0.0	T	1.7	3.0	T	9.5	0.1	T	T	0.0	14.3
1994-95	0.0	0.0	0.0	0.0	0.3	5.1	7.2	0.3	0.1	0.0	0.0	0.0	13.0
1995-96	0.0	0.0	0.0	0.0	2.6	2.6	12.8	3.2	T				
1996-97					23.5	34.5	3.5	1.9	2.6	0.0	0.0	0.0	
1997-98							13.3						
1998-99							2.3	1.5	T	0.0	0.0	0.0	
1999-00	0.0	0.0	0.0	0.0	0.0	1.8	17.8	0.8	0.0	0.0	0.0	0.0	20.4
2000-01	0.0	0.0	0.0	T	3.2	9.9	2.7	4.3	0.0	0.0	0.0	0.0	20.1
2001-02	0.0	0.0	0.0	0.0	12.9	9.9	T	0.8	3.4	0.0	0.0	0.0	27.0
2002-03	0.0	0.0	0.0	T	0.0	6.9	3.0	T	0.0	T	0.0	0.0	9.9
2003-04	0.0	0.0	0.0	T	0.0	11.4	17.6	3.8	0.2	0.0	0.0	0.0	33.0
2004-05	0.0	0.0	0.0	0.0	0.0	5.3	10.1	T	0.0	0.0	0.0	0.0	15.4
2005-06	0.0	0.0	0.0	0.0	2.4	3.1	2.1	0.2	T	0.0	0.0	0.0	7.8
2006-07	0.0	0.0	0.0	0.0	3.7	7.0	0.6	1.1	1.3	0.0	0.0	0.0	13.7
2007-	0.0	0.0	0.0	0.0	9.0	7.7							
POR= 60 YRS	0.0	0.0	0.0	0.1	2.8	8.0	7.9	3.1	1.3	T	T	0.0	23.2

WBAN : 24243

REFERENCE NOTES :

<p>PAGE 1: THE TEMPERATURE GRAPH SHOWS NORMAL MAXIMUM AND NORMAL MINIMUM DAILY TEMPERATURES (SOLID CURVES) AND THE ACTUAL DAILY HIGH AND LOW TEMPERATURES (VERTICAL BARS).</p> <p>PAGE 2 AND 3: H/C INDICATES HEATING AND COOLING DEGREE DAYS. RH INDICATES RELATIVE HUMIDITY W/O INDICATES WEATHER AND OBSTRUCTIONS S INDICATES SUNSHINE. PR INDICATES PRESSURE. CLOUDINESS ON PAGE 3 IS THE SUM OF THE CEILOMETER AND SATELLITE DATA NOT TO EXCEED EIGHT EIGHTHS(OKTAS).</p> <p>GENERAL: T INDICATES TRACE PRECIPITATION, AN AMOUNT GREATER THAN ZERO BUT LESS THAN THE LOWEST REPORTABLE VALUE. + INDICATES THE VALUE ALSO OCCURS ON EARLIER DATES. BLANK ENTRIES DENOTE MISSING OR UNREPORTED DATA. NORMALS ARE 30-YEAR AVERAGES (1971 - 2000). ASOS INDICATES AUTOMATED SURFACE OBSERVING SYSTEM. PM INDICATES THE LAST DAY OF THE PREVIOUS MONTH. POR (PERIOD OF RECORD) BEGINS WITH THE JANUARY DATA MONTH AND IS THE NUMBER OF YEARS USED TO COMPUTE THE MEAN. INDIVIDUAL MONTHS WITHIN THE POR MAY BE MISSING. WHEN THE POR FOR A NORMAL IS LESS THAN 30 YEARS, THE NORMAL IS PROVISIONAL AND IS BASED ON THE NUMBER OF YEARS INDICATED. 0.* OR * INDICATES THE VALUE OR MEAN-DAYS-WITH IS BETWEEN 0.00 AND 0.05. CLOUDINESS FOR ASOS STATIONS DIFFERS FROM THE NON-ASOS OBSERVATION TAKEN BY A HUMAN OBSERVER. ASOS STATION CLOUDINESS IS BASED ON TIME-AVERAGED CEILOMETER DATA FOR CLOUDS AT OR BELOW 12,000 FEET AND ON SATELLITE DATA FOR CLOUDS ABOVE 12,000 FEET. THE NUMBER OF DAYS WITH CLEAR, PARTLY CLOUDY, AND CLOUDY CONDITIONS FOR ASOS STATIONS IS THE SUM OF THE CEILOMETER AND SATELLITE DATA FOR THE SUNRISE TO SUNSET PERIOD.</p>	<p>GENERAL CONTINUED: CLEAR INDICATES 0 - 2 OKTAS, PARTLY CLOUDY INDICATES 3 - 6 OKTAS, AND CLOUDY INDICATES 7 OR 8 OKTAS. WHEN AT LEAST ONE OF THE ELEMENTS (CEILOMETER OR SATELLITE) IS MISSING, THE DAILY CLOUDINESS IS NOT COMPUTED. WIND DIRECTION IS RECORDED IN TENS OF DEGREES (2 DIGITS) CLOCKWISE FROM TRUE NORTH. "00" INDICATES CALM. "36" INDICATES TRUE NORTH. RESULTANT WIND IS THE VECTOR AVERAGE OF THE SPEED AND DIRECTION. AVERAGE TEMPERATURE IS THE SUM OF THE MEAN DAILY MAXIMUM AND MINIMUM TEMPERATURE DIVIDED BY 2. SNOWFALL DATA COMPRISE ALL FORMS OF FROZEN PRECIPITATION, INCLUDING HAIL. A HEATING (COOLING) DEGREE DAY IS THE DIFFERENCE BETWEEN THE AVERAGE DAILY TEMPERATURE AND 65 F. DRY BULB IS THE TEMPERATURE OF THE AMBIENT AIR. DEW POINT IS THE TEMPERATURE TO WHICH THE AIR MUST BE COOLED TO ACHIEVE 100 PERCENT RELATIVE HUMIDITY. WET BULB IS THE TEMPERATURE THE AIR WOULD HAVE IF THE MOISTURE CONTENT WAS INCREASED TO 100 PERCENT RELATIVE HUMIDITY.</p> <p>ON JULY 1, 1996, THE NATIONAL WEATHER SERVICE BEGAN USING THE "METAR" OBSERVATION CODE THAT WAS ALREADY EMPLOYED BY MOST OTHER NATIONS OF THE WORLD. THE MOST NOTICEABLE DIFFERENCE IN THIS ANNUAL PUBLICATION WILL BE THE CHANGE IN UNITS FROM TENTHS TO EIGHTS(OKTAS) FOR REPORTING THE AMOUNT OF SKY COVER.</p> <p>NOTE: The "Period of Record:(POR) for all "averages" is based on the "Summary of the Day First Order Station" and "Cooperative Summary of the Day" archives.</p>
---	--

2007 YAKIMA WASHINGTON (KYKM)

Yakima is located in a small east-west valley in the upper (northwestern) part of the Yakima Valley. Local topography is complex with a number of minor valleys and ridges giving a local relief of as much as 1,000 feet. This complex topography results in marked variations in air drainage, winds, and low temperatures within short distances.

The climate of the Yakima Valley is relatively mild and dry. It has characteristics of both maritime and continental climates, modified by the Cascade and the Rocky Mountains, respectively. Summers are dry and rather hot, and winters cool with only light snowfall. The maritime influence is strongest in winter when the prevailing westerlies are the strongest and most steady. The Selkirk and Rocky Mountains in British Columbia and Idaho shield the area from most of the very cold air masses that sweep down from Canada into the Great Plains and eastern United States. Sometimes a strong polar high pressure area over western Canada will occur at the same time that a low pressure area covers the southwestern United States. On these occasions, the cold arctic air will pour through the passes and down the river valleys of British Columbia, bringing very cold temperatures to Yakima. However, over one-half of the winters remain above zero.

The modifying influence of the Pacific Ocean is much less in summer. Afternoons are hot, but the dry air results in a rapid temperature fall after sunset, and nights are pleasantly cool with summertime low temperatures, usually in the 50s. Spells of 4 to 11 days of 100 degrees or more have occurred.

The length of the growing season varies depending on the immediate topography and the crop grown. Temperatures below 32 degrees are infrequent during the period from mid-May through September. Temperatures below 40 degrees during July and August have occurred in about half of the years.

Precipitation follows the pattern of a West Coast marine climate with the typical late fall and early winter high. However, since Yakima lies in the rain shadow of the Cascades, total amounts are small. The three months, November to January, total nearly half of the annual fall. Late June, July, and August are very dry.

Irrigation is necessary for nearly all crops. Ample water supplies are available from the snowmelt in the Cascade Mountains which is collected in storage reservoirs for summer use.

Snowfall in the Yakima area is light, averaging 20 to 25 inches.

Summers are sunny, with about 85 percent of the possible sunshine. Winters are generally cloudy, with only a third of the possible sunshine.

Winds are mostly light, averaging about 7 mph for the year, being somewhat stronger in late spring and weaker in winter. Speeds of 30 to 35 mph are reached at least once in about half the months and speeds over 40 mph occur in about 1 out of 5 months. The most common wind direction in downtown Yakima is northwest, while at the airport the wind is from the west in winter and the west-northwest in summer.

Station Location

YAKIMA

LOCATION	Occupied From	Occupied To	Airline Distances and Directions from previous Location	Latitude		Longitude		ELEVATION ABOVE								AUTOMATIC OBSERVING EQUIPMENT *	REMARKS
								SEA LEVEL	GROUND								
								GROUND TEMPERATURE SITE	WIND INSTRUMENT	EXTREME THERMOMETERS	PSYCHROMETER	SUNSHINE SWITCH	TIPPING BUCKET RAIN GAUGE	WEIGHING RAIN GAUGE	8 INCH RAIN GAUGE		
<u>AIRPORT</u>																	
Municipal Airport (3 miles SW of P.O.) 2102 West Washington	3/01/44	8/31/46		46° 34'	120° 32'	1058	58	5	5						3	Observations by CAA.	
Municipal Airport 2104 West Washington	9/01/46	7/19/50	No Change	46° 34'	120° 32'	1058	58	5	5					7	3	Weather Bureau operation. Instruments not moved.	
Administration Building Municipal Airport	7/19/50	1/04/68	500 ft. W	46° 34'	120° 32'	c1052	a20	6	6					5	4	b4 Instrument exposure excellent. a. 49 feet to 1/10/62. b. 1275 feet SE of thermometer site. Commissioned 9/28/63. c. 1061 feet to 9/28/63.	
Weather Bureau Building Municipal Airport + + Yakima Air Terminal effective 12/1973.	1/04/68	04/01/96	390 ft. W	46° 34'	120° 32'	1052	d20 e33	6	5	NA	NA	5	4	d4 f5 g5	NA	d. Not moved 1/04/68. e. Effective 5/31/79. f. Effective 7/26/79. g. Minor move & type change 9/24/85.	
Yakima Municipal AP	04/01/96	Present	NA	46° 34'	120° 32'	h1072									S	ASOS Commissioned 04/01/96 h. Ground elevation.	

* TYPE
M = AMOS
T = AUTOB
S = ASOS
W = AWOS

For Hard Copy Subscription:

Price and ordering information: NCDC Subscribing Service Center, 310 State Route 956, Building 300, Rocket Center, WV 26726.

INQUIRES/COMMENTS CALL: Toll Free (866) 742-3322

Visit our Web Site for other weather data: www.ncdc.noaa.gov

Non-Subscription Request:

NCDC Customer Services;
Phone: 828-271-4800
Fax: 828-271-4876
Email: ncdc.orders@noaa.gov

FIRST CLASS
POSTAGE & FEES PAID
United States Department of Commerce
NOAA Permit No. G - 19

OFFICIAL BUSINESS
PENALTY FOR PRIVATE USE \$300
CHANGE SERVICE REQUESTED

* NOTES: For earlier station history see previous edition.