

2005

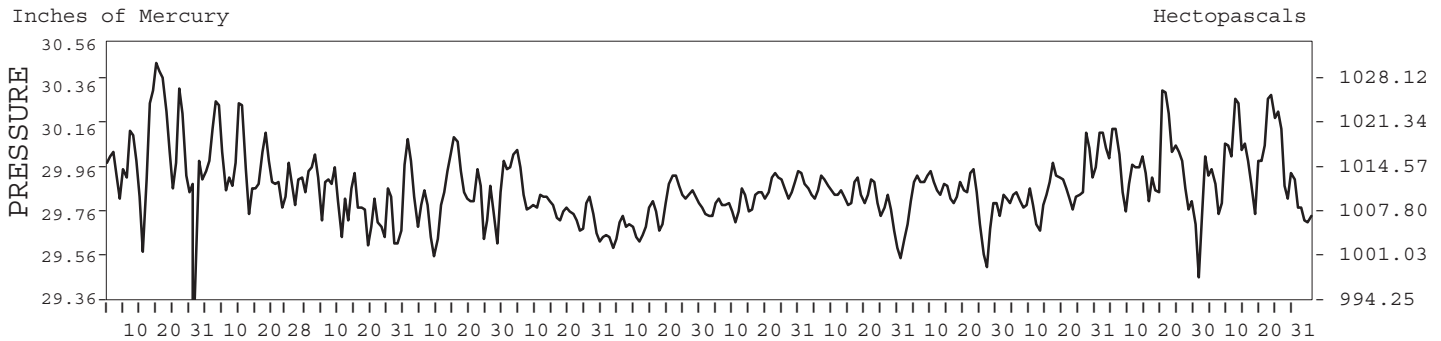
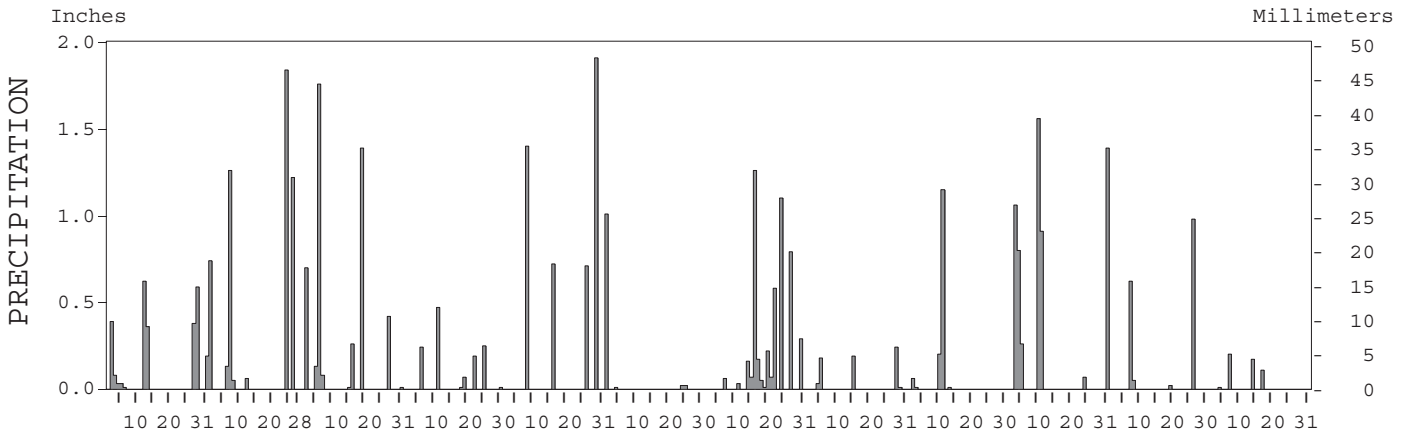
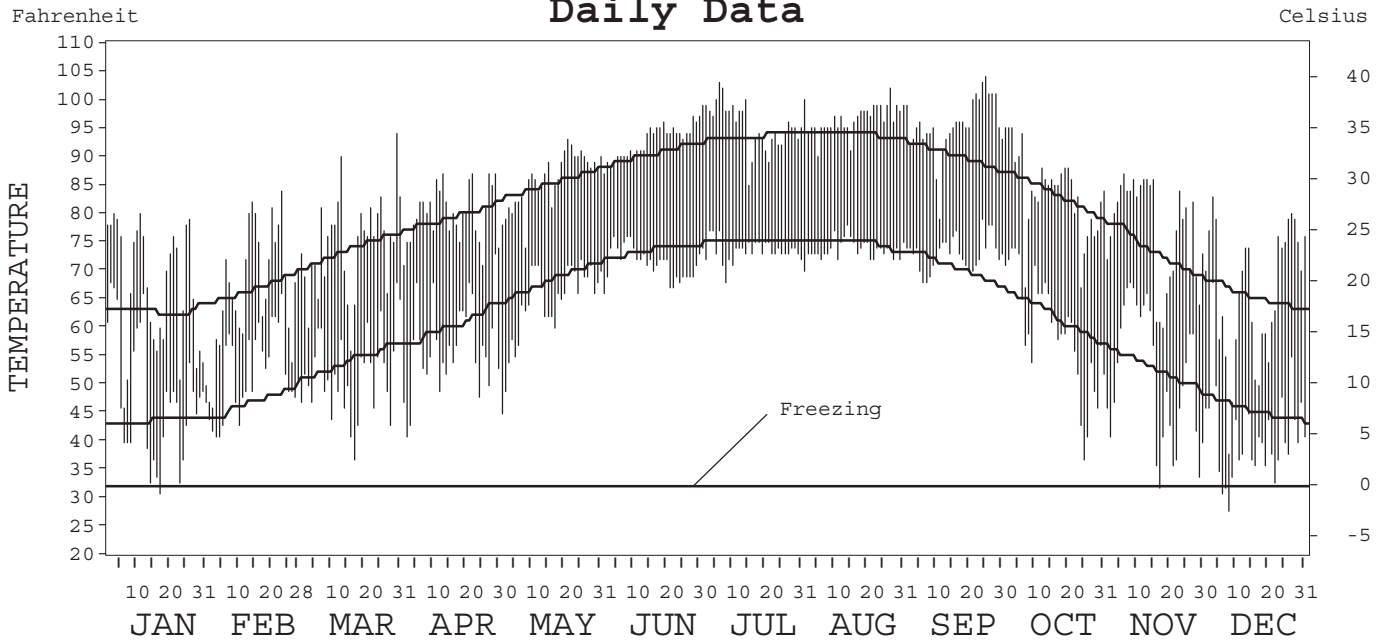
# LOCAL CLIMATOLOGICAL DATA ANNUAL SUMMARY WITH COMPARATIVE DATA



ISSN 0198-5205

VICTORIA,  
TEXAS (VCT)

## Daily Data



I CERTIFY THAT THIS IS AN OFFICIAL PUBLICATION OF THE NATIONAL OCEANIC AND ATMOSPHERIC ADMINISTRATION, AND IS COMPILED FROM RECORDS ON FILE AT THE NATIONAL CLIMATIC DATA CENTER.

NATIONAL OCEANIC AND ATMOSPHERIC ADMINISTRATION  
 NATIONAL ENVIRONMENTAL SATELLITE, DATA, AND INFORMATION SERVICE  
 NATIONAL CLIMATIC DATA CENTER ASHEVILLE, NORTH CAROLINA  
 DIRECTOR NATIONAL CLIMATIC DATA CENTER

# METEOROLOGICAL DATA FOR 2005

VICTORIA, TX (VCT)

LATITUDE: 28° 51' 45" N      LONGITUDE: 96° 55' 47" W      ELEVATION (FT): GRND: 103      BARO: 106      TIME ZONE: CENTRAL (UTC + 6)      WBAN: 12912

	ELEMENT	JAN	FEB	MAR	APR	MAY	JUN	JUL	AUG	SEP	OCT	NOV	DEC	YEAR	
TEMPERATURE °F	MEAN DAILY MAXIMUM	66.6	67.3	74.7	80.0	86.0	92.6	95.4	96.6	95.5	83.7	77.1	66.2	81.8	
	HIGHEST DAILY MAXIMUM	80	84	94	87	93	97	103	102	104	95	87	83	104	
	DATE OF OCCURRENCE	11+	23	30	29+	21	30+	06	27	25	03+	06	03	SEP 25	
	MEAN DAILY MINIMUM	47.8	52.2	52.1	56.5	64.4	71.3	73.5	73.7	73.0	59.5	51.6	41.1	59.7	
	LOWEST DAILY MINIMUM	31	41	37	41	45	66	68	70	68	37	32	28	28	
	DATE OF OCCURRENCE	17	04+	17	02	01	01	08	01	07+	25	17	08	DEC 08	
	AVERAGE DRY BULB	57.2	59.8	63.4	68.3	75.2	82.0	84.5	85.2	84.3	71.6	64.4	53.7	70.8	
	MEAN WET BULB		55.5	57.7	61.5		74.5	76.0	76.3	75.1	64.0	57.8	48.4		
	MEAN DEW POINT		52.4	53.5	56.5		71.4	72.9	73.1	71.5	59.9	52.2	42.8		
	NUMBER OF DAYS WITH:														
	MAXIMUM ≥ 90°	0	0	2	0	8	26	28	31	28	5	0	0	0	128
	MAXIMUM ≤ 32°	0	0	0	0	0	0	0	0	0	0	0	0	0	0
	MINIMUM ≤ 32°	1	0	0	0	0	0	0	0	0	0	1	3	5	5
MINIMUM ≤ 0°	0	0	0	0	0	0	0	0	0	0	0	0	0	0	
H/C	HEATING DEGREE DAYS	282	177	106	24	4	0	0	0	0	34	130	354	1111	
	COOLING DEGREE DAYS	48	38	65	129	328	516	611	634	585	247	120	14	3335	
RH	MEAN (PERCENT)	81	80	75	70	77	74	74	73	73	73	71	70	74	
	HOUR 00 LST	88	88	86	84	91	90	89	88	88	86	84	80	87	
	HOUR 06 LST	90	89	91	87	94	95	94	94	92	90	86	83	90	
	HOUR 12 LST	69	71	59	50	57	54	55	52	50	50	49	52	56	
	HOUR 18 LST	74	72	61	55	65	58	57	58	59	65	63	64	63	
S	PERCENT POSSIBLE SUNSHINE														
W/O	NUMBER OF DAYS WITH:														
	HEAVY FOG (VISBY ≤ 1/4 MI)	11	7	6	3	5	5	0	3	2	4	12	7	65	
	THUNDERSTORMS	4	2	7	2	7	2	16	12	8	5	3	3	71	
CLOUDINESS	SUNRISE-SUNSET: (OKTAS)														
	CEILOMETER (≤ 12,000 FT.)														
	SATELLITE (> 12,000 FT.)														
	MIDNIGHT-MIDNIGHT: (OKTAS)														
	CEILOMETER (≤ 12,000 FT.)														
SATELLITE (> 12,000 FT.)															
NUMBER OF DAYS WITH:															
CLEAR															
PARTLY CLOUDY															
CLOUDY															
PR	MEAN STATION PRESS. (IN.)		29.98	29.81	29.85	29.81	29.76	29.84	29.82	29.84	29.90	29.96	29.99		
	MEAN SEA-LEVEL PRESS. (IN.)			29.93	29.97	29.93	29.88	29.96	29.94	29.96	30.02	30.08	30.12		
WINDS	RESULTANT SPEED (MPH)		2.5	0.5	2.9	2.1	1.3	1.7	2.5	0.8	3.8	1.6	2.7		
	RES. DIR. (TENS OF DEGS.)		07	19	12	19	29	08	35	01	05	14	03		
	MEAN SPEED (MPH)	9.6	8.7	9.2	10.2	8.7	9.0	7.7	7.4	8.1	7.9	8.1	8.9	8.6	
	PREVAIL. DIR. (TENS OF DEGS.)	01	36	17	12	13	13	16	16	16	05	17	35	16	
	MAXIMUM 2-MINUTE WIND:														
	SPEED (MPH)	38	33	32	31	33	43	31	33	26	40	32	32	43	
	DIR. (TENS OF DEGS.)	19	24	34	36	30	32	01	03	01	29	35	32	32	
	DATE OF OCCURRENCE	12	24	19	30	29	01	07	28	23	11	15	14	JUN 01	
	MAXIMUM 5-SECOND WIND:														
	SPEED (MPH)	45	41	39	40	45	51	40	40	33	49	39	37	51	
DIR. (TENS OF DEGS.)	28	24	33	36	32	32	02	04	27	35	01	32	32		
DATE OF OCCURRENCE	28+	24	19	30	29	01	14	28	24	31	16	14	JUN 01		
PRECIPITATION	WATER EQUIVALENT:														
	TOTAL (IN.)	2.68	5.30	4.76	1.24	4.74	1.06	4.86	0.65	1.43	6.05	1.67	0.49	34.93	
	GREATEST 24-HOUR (IN.)	0.97	1.84	1.76	0.47	1.91	1.01	1.30	0.24	1.18	1.56	0.98	0.20	1.91	
	DATE OF OCCURRENCE	27-28	24	05-06	11	29	01	15-16	28	10-11	10	26	07	MAY 29	
	NUMBER OF DAYS WITH:														
PRECIPITATION ≥ 0.01	10	7	9	7	4	4	14	5	5	7	4	4	80		
PRECIPITATION ≥ 0.10	6	5	6	4	4	1	8	3	2	6	2	3	50		
PRECIPITATION ≥ 1.00	0	3	2	0	2	1	2	0	1	3	0	0	14		
SNOWFALL	SNOW, ICE PELLETS, HAIL:														
	TOTAL (IN.)														
	GREATEST 24-HOUR (IN.)														
	DATE OF OCCURRENCE														
	NUMBER OF DAYS WITH:														
SNOWFALL ≥ 1.0															

# NORMALS, MEANS, AND EXTREMES

## VICTORIA, TX (VCT)

LATITUDE: 28° 51' 45" N      LONGITUDE: 96° 55' 47" W      ELEVATION (FT): GRND: 103      BARO: 106      TIME ZONE: CENTRAL (UTC + 6)      WBAN: 12912

ELEMENT		POR	JAN	FEB	MAR	APR	MAY	JUN	JUL	AUG	SEP	OCT	NOV	DEC	YEAR
TEMPERATURE °F	NORMAL DAILY MAXIMUM	30	62.8	66.6	73.4	79.2	85.1	90.3	93.4	93.7	89.9	83.0	73.0	65.2	79.6
	MEAN DAILY MAXIMUM	49	63.9	67.5	73.8	80.5	85.7	91.0	93.7	94.2	89.6	83.1	73.5	66.3	80.2
	HIGHEST DAILY MAXIMUM	45	88	95	97	98	101	106	104	107	111	99	93	88	111
	YEAR OF OCCURRENCE		1971	1986	1989	1963	1964	1998	1964	1962	2000	1991	1988	1964	SEP 2000
	MEAN OF EXTREME MAXS.	49	79.3	82.0	86.1	89.5	92.7	96.1	98.4	99.5	96.5	92.2	86.2	81.0	90.0
	NORMAL DAILY MINIMUM	30	43.6	46.7	53.9	60.1	68.1	73.3	75.0	74.6	70.3	61.6	52.3	45.2	60.4
	MEAN DAILY MINIMUM	49	43.7	46.7	53.3	61.3	68.1	73.4	75.1	74.7	70.6	61.6	52.3	45.4	60.5
	LOWEST DAILY MINIMUM	45	14	19	21	33	45	59	62	62	48	31	24	9	9
	YEAR OF OCCURRENCE		1982	1985	2002	1987	2005	1984	1967	2004	2000	1993	1976	1989	DEC 1989
	MEAN OF EXTREME MINS.	49	26.1	30.1	35.1	44.5	55.9	65.4	70.3	69.7	57.7	45.1	35.2	28.3	47.0
	NORMAL DRY BULB	30	53.2	56.7	63.7	69.7	76.6	81.8	84.2	84.2	80.1	72.3	62.7	55.2	70.0
	MEAN DRY BULB	49	53.9	57.1	63.6	70.8	77.0	82.2	84.4	84.3	80.3	72.3	62.8	56.1	70.4
	MEAN WET BULB	20	50.0	53.3	58.2	64.4	71.3	75.3	76.2	76.1	72.9	66.1	58.3	51.5	64.5
	MEAN DEW POINT	20	46.0	49.3	53.9	60.3	68.4	72.6	73.1	73.1	69.6	62.7	54.5	47.5	60.9
	NORMAL NO. DAYS WITH:														
MAXIMUM ≥ 90°	30	0.0	0.1	0.4	0.8	6.3	20.2	28.0	27.9	18.5	4.9	0.1	0.0	107.2	
MAXIMUM ≤ 32°	30	0.1	0.1	0.0	0.0	0.0	0.0	0.0	0.0	0.0	0.0	0.0	0.2	0.4	
MINIMUM ≤ 32°	30	4.1	2.2	0.5	0.0	0.0	0.0	0.0	0.0	0.0	*	0.6	3.1	10.5	
MINIMUM ≤ 0°	30	0.0	0.0	0.0	0.0	0.0	0.0	0.0	0.0	0.0	0.0	0.0	0.0	0.0	
H/C	NORMAL HEATING DEG. DAYS	30	372	249	113	28	1	0	0	0	1	22	145	317	1248
	NORMAL COOLING DEG. DAYS	30	18	26	84	181	368	514	601	597	454	248	83	29	3203
RH	NORMAL (PERCENT)	30	77	76	75	74	78	77	74	75	76	76	77	77	76
	HOUR 00 LST	30	84	84	84	85	89	90	89	88	88	88	87	85	87
	HOUR 06 LST	30	88	88	88	89	92	93	93	94	93	91	90	88	91
	HOUR 12 LST	30	65	63	60	59	62	60	55	56	59	58	61	64	60
	HOUR 18 LST	30	69	64	62	62	67	66	60	62	65	67	71	71	66
S	PERCENT POSSIBLE SUNSHINE														
W/O	MEAN NO. DAYS WITH:														
	HEAVY FOG (VISBY ≤ 1/4 MI)	44	7.2	5.1	5.2	3.9	2.4	0.7	0.3	0.4	1.3	3.5	6.1	6.1	42.2
	THUNDERSTORMS	44	1.6	1.9	3.0	3.4	6.3	6.9	7.5	9.8	8.0	3.8	2.2	1.5	55.9
CLOUDINESS	MEAN:														
	SUNRISE-SUNSET (OKTAS)	1			6.4			4.0							
	MIDNIGHT-MIDNIGHT (OKTAS)														
	MEAN NO. DAYS WITH:														
CLEAR	1	3.0	5.0	8.0		5.0	9.0								
PARTLY CLOUDY	1		1.0	3.0		9.0	6.0								
CLOUDY	1	1.0	3.0	10.0		3.0	5.0								
PR	MEAN STATION PRESSURE (IN)	31	30.01	29.97	29.87	29.84	29.79	29.82	29.88	29.87	29.85	29.92	29.96	30.01	29.90
	MEAN SEA-LEVEL PRES. (IN)	20	30.15	30.10	30.02	29.96	29.93	29.94	30.01	29.99	29.98	30.04	30.09	30.14	30.03
WINDS	MEAN SPEED (MPH)	29	10.3	10.7	10.8	11.2	10.3	9.4	8.6	8.2	8.0	8.7	9.6	9.8	9.6
	PREVAIL. DIR (TENS OF DEGS)	26	36	36	16	16	16	16	18	18	04	36	36	36	16
	MAXIMUM 2-MINUTE:														
	SPEED (MPH)	10	43	43	39	47	41	43	62	43	41	43	40	40	62
	DIR. (TENS OF DEGS)		17	15	36	11	07	32	05	26	04	35	29	33	05
	YEAR OF OCCURRENCE		1996	2001	1996	2004	1999	2005	2003	1996	1998	1998	2003	1997	JUL 2003
	MAXIMUM 5-SECOND:														
SPEED (MPH)	10	52	52	47	64	59	51	83	45	53	52	51	47	83	
DIR. (TENS OF DEGS)		30	15	35	11	22	32	04	27	12	35	30	33	04	
YEAR OF OCCURRENCE		1998	2001	1996	2004	2004	2005	2003	1996	2001	1998	2003	1997	JUL 2003	
PRECIPITATION	NORMAL (IN)	30	2.44	2.04	2.25	2.97	5.12	4.96	2.90	3.05	5.00	4.26	2.64	2.47	40.10
	MAXIMUM MONTHLY (IN)	45	7.76	9.08	11.61	11.70	14.66	13.50	13.59	8.97	19.05	12.44	16.14	6.97	19.05
	YEAR OF OCCURRENCE		1991	1992	1997	1997	1993	2004	1990	2001	1978	1997	2004	1975	SEP 1978
	MINIMUM MONTHLY (IN)	45	0.02	0.23	0.18	T	0.01	T	0.05	0.34	1.11	0.34	0.02	0.36	T
	YEAR OF OCCURRENCE		1971	1988	1971	1987	1998	1980	1997	1965	1982	1987	1981	1972	APR 1987
	MAXIMUM IN 24 HOURS (IN)	45	4.70	3.21	5.04	9.87	8.45	9.30	8.41	6.14	8.51	8.15	9.20	6.12	9.87
	YEAR OF OCCURRENCE		1991	1992	1997	1991	1972	1977	1990	1964	1967	1994	2004	1975	APR 1991
	NORMAL NO. DAYS WITH:														
PRECIPITATION ≥ 0.01	30	8.8	7.3	6.9	6.4	7.4	8.4	7.2	8.8	9.9	7.3	7.5	8.1	94.0	
PRECIPITATION ≥ 1.00	30	0.6	0.6	0.7	0.8	1.7	1.7	0.9	0.9	1.5	1.3	0.6	0.6	11.9	
SNOWFALL	NORMAL (IN)	30	0.1	0.*	0.*	0.0	0.0	0.0	0.0	0.0	0.0	0.0	0.*	0.*	0.1
	MAXIMUM MONTHLY (IN)	36	2.1	1.0	T	0.0	T	0.0	0.0	T	0.0	0.0	0.2	T	2.1
	YEAR OF OCCURRENCE		1985	1973	1990		1993			1994			1976	1990	JAN 1985
	MAXIMUM IN 24 HOURS (IN)	36	2.1	1.0	T	0.0	T	0.0	0.0	T	0.0	0.0	0.2	T	2.1
	YEAR OF OCCURRENCE		1985	1973	1990		1993			1994			1976	1990	JAN 1985
	MAXIMUM SNOW DEPTH (IN)	39	2	3	0	0	0	0	0	0	0	0	0	0	3
	YEAR OF OCCURRENCE		1985	1958											FEB 1958
NORMAL NO. DAYS WITH:															
SNOWFALL ≥ 1.0	30	0.1	0.1	0.0	0.0	0.0	0.0	0.0	0.0	0.0	0.0	0.0	0.0	0.2	

PRECIPITATION (inches) 2005 VICTORIA, TX (VCT)

YEAR	JAN	FEB	MAR	APR	MAY	JUN	JUL	AUG	SEP	OCT	NOV	DEC	ANNUAL
1976	0.77	0.39	1.45	5.90	2.61	1.32	5.75	2.76	7.61	6.18	3.05	5.46	43.25
1977	2.39	2.56	1.10	3.90	2.26	12.21	0.76	2.53	3.20	4.21	3.64	0.45	39.21
1978	3.43	2.87	0.54	1.95	1.05	4.88	2.51	2.08	19.05	0.57	2.88	1.27	43.08
1979	5.21	2.32	1.69	5.16	6.66	4.03	6.94	2.07	10.50	1.65	0.89	2.18	49.30
1980	4.52	1.78	1.97	0.48	8.16	T	0.41	5.65	6.07	0.90	1.81	0.79	32.54
1981	2.22	1.01	1.40	1.42	8.39	9.29	4.37	4.23	1.22	10.16	0.02	1.37	45.10
1982	0.39	5.38	0.23	1.40	8.61	0.06	0.07	1.78	1.11	4.07	8.68	0.75	32.53
1983	1.64	3.79	4.21	0.24	1.76	2.96	10.47	1.88	4.80	7.00	3.14	0.52	42.41
1984	3.02	1.34	1.74	0.09	4.02	2.05	1.02	4.16	1.87	8.52	2.16	3.93	33.92
1985	3.37	1.97	5.51	8.56	1.03	6.97	1.26	1.88	3.29	2.03	1.74	2.38	39.99
1986	1.12	0.50	1.03	0.50	6.77	7.45	0.81	3.62	3.56	6.79	2.79	4.25	39.19
1987	2.42	4.24	0.43	T	4.96	11.70	4.98	3.07	3.20	0.34	5.89	1.86	43.09
1988	0.30	0.23	1.68	1.10	1.03	1.73	2.79	1.12	2.77	0.77	0.15	2.24	15.91
1989	3.91	0.47	1.72	1.10	0.69	4.35	2.47	1.73	2.43	3.89	1.90	1.13	25.79
1990	1.73	2.04	3.00	3.63	1.19	0.82	13.59	1.47	3.59	1.56	2.34	0.81	35.77
1991	7.76	3.05	3.23	11.09	2.16	5.77	7.90	2.42	2.94	3.27	0.87	6.26	56.72
1992	5.00	9.08	1.18	7.81	12.26	1.33	2.30	1.65	3.63	1.17	3.88	2.09	51.38
1993	3.21	3.61	2.80	4.43	14.66	11.36	1.16	0.72	1.78	2.49	1.17	4.01	51.40
1994	1.40	0.84	4.76	2.04	4.46	5.46	2.12	3.90	2.89	10.47	0.30	5.03	43.67
1995	1.39	0.50	3.43	1.53	4.42	2.72	0.96	5.33	4.78	1.67	2.82	3.92	33.47
1996	0.08	0.38	0.36	2.47	1.52	6.35	0.19	7.03	5.76	0.45	2.09	2.06	28.74
1997	3.92	1.55	11.61	11.70	9.17	4.45	0.05	2.75	5.34	12.44	2.57	1.63	67.18
1998	1.71	3.33	2.07	0.76	0.01	0.15	0.96	5.13	10.33	8.24	10.11	3.59	46.39
1999	0.63	1.94	3.41	0.32	6.43	4.83	2.19	0.98	3.78	1.15	0.33	1.02	27.01
2000	3.73	0.69	2.16	2.96	7.88	4.42	0.88	0.94	1.47	4.49	5.21	1.93	36.76
2001	2.60	0.44	3.75	0.17	6.01	0.42	1.20	8.97	7.06	4.81	3.82	3.52	42.77
2002	0.53	0.33	0.46	3.90	2.02	5.04	5.48	2.58	3.93	8.55	3.70	2.61	39.13
2003	2.04	1.65	1.09	0.26	0.08	5.61	7.93	1.62	8.38	4.53	3.42	2.06	38.67
2004	3.02	3.20	1.29	6.29	12.66	13.50	3.51	3.78	2.54	5.81	16.14	1.91	73.65
2005	2.68	5.30	4.76	1.24	4.74	1.06	4.86	0.65	1.43	6.05	1.67	0.49	34.93
POR= 112 YRS	2.29	2.18	2.19	2.81	4.39	3.82	3.29	2.88	4.30	3.64	2.66	2.50	36.95

WBAN : 12912

AVERAGE TEMPERATURE (°F) 2005 VICTORIA, TX (VCT)

YEAR	JAN	FEB	MAR	APR	MAY	JUN	JUL	AUG	SEP	OCT	NOV	DEC	ANNUAL
1976	53.2	62.5	65.2	70.9	73.3	80.7	81.0	82.5	78.5	64.0	54.4	51.9	68.2
1977	46.0	56.2	64.4	69.3	76.9	82.0	84.1	85.0	83.2	72.8	64.9	57.5	70.2
1978	45.2	48.4	60.7	70.0	78.6	82.4	84.8	84.1	80.6	71.4	64.6	54.3	68.8
1979	45.9	52.7	64.7	70.7	73.5	80.6	83.0	82.8	76.9	72.7	57.6	54.3	68.0
1980	55.7	54.9	62.8	67.2	77.1	84.1	86.9	84.1	82.4	69.4	58.5	56.0	69.9
1981	53.1	56.1	62.0	73.7	75.6	82.2	84.0	83.3	78.8	72.6	65.4	56.2	70.3
1982	53.8	53.2	65.2	69.5	75.9	83.2	85.9	86.1	81.8	71.9	62.6	57.4	70.5
1983	52.4	55.1	61.1	67.0	75.2	80.7	82.8	84.0	77.7	72.1	65.3	46.6	68.3
1984	50.3	57.4	64.9	71.6	76.5	82.2	85.2	84.2	78.3	75.3	62.7	65.0	71.1
1985	47.3	52.5	66.7	71.4	78.5	82.0	83.5	86.2	81.1	73.8	67.4	52.7	70.3
1986	56.0	60.6	64.8	73.6	76.0	82.0	85.0	84.5	82.5	71.3	62.6	53.6	71.0
1987	53.3	57.5	61.1	68.3	77.5	81.0	83.9	85.6	80.6	71.2	62.4	58.0	70.0
1988	50.0	55.8	62.6	69.3	75.3	81.2	85.2	86.7	81.6	74.4	67.7	57.7	70.6
1989	59.5	54.4	63.1	70.8	81.1	82.3	84.2	84.0	78.7	72.6	65.0	46.0	70.1
1990	59.1	61.1	63.7	70.6	78.7	85.3	83.3	85.3	81.4	70.7	66.2	55.1	71.7
1991	51.6	58.8	66.0	74.1	78.0	82.2	84.0	84.5	78.6	74.2	59.5	58.7	70.9
1992	53.4	61.4	66.0	70.6	75.0	83.8	85.3	83.0	81.6	74.1	59.7	59.3	71.1
1993	54.3	57.9	64.0	67.9	74.2	81.2	84.7	85.9	81.7	71.7	58.5	57.2	69.9
1994	56.1	56.8	63.4	70.4	76.1	83.2	85.3	83.0	78.6	73.7	67.7	59.0	71.1
1995	55.9	60.1	62.8	69.0	77.9	80.2	85.2	84.4	81.1	72.0	63.0	57.5	70.8
1996	53.0	58.3	57.8	69.1	81.2	82.9	85.1	83.3	79.1	72.7	63.6	58.6	70.4
1997	51.8	56.6	65.7	65.5	74.2	80.8	84.7	84.8	80.2	70.3	58.2	52.2	68.8
1998	58.6	57.0	60.9	67.3	79.2	86.0	87.2	85.3	82.4	73.3	64.9	54.8	71.4
1999	57.4	62.7	64.3	71.5	77.1	80.9	81.6	85.1	78.8	71.0	65.0	56.3	71.0
2000	59.4	64.7	69.1	70.7	79.2	82.0	85.6	85.4	81.3	72.8	60.2	49.9	71.7
2001	51.7	60.9	58.1	72.5	77.2	82.4	85.2	84.2	78.0	69.7	64.4	57.4	70.1
2002	56.8	52.5	62.1	74.4	77.7	82.3	83.2	84.2	79.6	72.4	59.8	56.0	70.1
2003	51.3	55.1	62.2	71.0	81.5	82.6	82.4	84.0	77.6	71.9	65.7	55.2	70.0
2004	56.3	54.7	67.4	69.5	75.8	81.1	82.9	82.4	80.3	77.0	63.4	54.5	70.4
2005	57.2	59.8	63.4	68.3	75.2	82.0	84.5	85.2	84.3	71.6	64.4	53.7	70.8
POR= 102 YRS	54.6	57.7	63.9	71.6	76.7	82.2	83.5	84.7	80.4	72.6	63.0	56.1	70.6

HEATING DEGREE DAYS (base 65°F) 2005 VICTORIA, TX (VCT)

YEAR	JUL	AUG	SEP	OCT	NOV	DEC	JAN	FEB	MAR	APR	MAY	JUN	TOTAL
1976-77	0	0	0	111	325	398	585	246	82	8	0	0	1755
1977-78	0	0	0	8	86	261	620	467	166	23	1	0	1632
1978-79	0	0	0	3	121	349	591	352	79	13	6	0	1514
1979-80	0	0	0	20	243	329	299	309	135	39	0	0	1374
1980-81	0	0	0	59	231	303	362	272	120	2	0	0	1349
1981-82	0	0	0	46	64	284	375	337	126	47	0	0	1279
1982-83	0	0	0	21	155	270	390	274	151	60	0	0	1321
1983-84	0	0	3	12	99	580	451	230	88	14	0	0	1477
1984-85	0	0	8	6	139	123	544	358	60	5	0	0	1243
1985-86	0	0	4	6	69	385	275	183	67	3	0	0	992
1986-87	0	0	0	12	162	353	360	207	148	64	0	0	1306
1987-88	0	0	0	2	148	243	462	288	144	31	0	0	1318
1988-89	0	0	0	0	91	252	211	335	172	37	0	0	1098
1989-90	0	0	0	28	109	584	206	133	100	23	1	0	1184
1990-91	0	0	0	32	73	349	408	186	61	4	0	0	1113
1991-92	0	0	0	18	204	239	353	133	67	24	0	0	1038
1992-93	0	0	0	0	202	206	330	206	101	26	0	0	1071
1993-94	0	0	0	61	227	267	288	266	110	25	5	0	1249
1994-95	0	0	0	14	48	232	303	153	155	19	0	0	924
1995-96	0	0	6	3	114	281	373	259	258	50	0	0	1344
1996-97	0	0	0	14	119	238	437	247	54	59	0	0	1168
1997-98	0	0	0	43	222	390	220	225	179	26	0	0	1305
1998-99	0	0	0	5	68	355	262	115	91	23	0	0	919
1999-00	0	0	0	38	71	283	217	97	51	21	0	0	778
2000-01	0	0	1	55	205	463	411	174	213	8	0	0	1530
2001-02	0	0	0	20	99	270	286	349	157	5	0	0	1186
2002-03	0	0	0	11	172	296	425	289	128	25	0	0	1346
2003-04	0	0	0	12	101	304	285	303	23	32	2	0	1062
2004-05	0	0	0	2	106	332	282	177	106	24	4	0	1033
2005-	0	0	0	34	130	354							

WBAN : 12912

COOLING DEGREE DAYS (base 65°F) 2005 VICTORIA, TX (VCT)

YEAR	JAN	FEB	MAR	APR	MAY	JUN	JUL	AUG	SEP	OCT	NOV	DEC	ANNUAL
1976	7	54	107	186	263	478	505	550	414	88	16	1	2669
1977	4	8	74	144	376	517	599	625	551	259	89	37	3283
1978	10	8	39	177	428	528	622	598	476	205	118	23	3232
1979	7	18	78	190	277	476	563	559	362	266	28	5	2829
1980	15	24	73	114	383	582	684	599	526	202	41	29	3272
1981	0	32	35	268	333	523	595	576	421	285	83	18	3169
1982	40	13	140	191	344	552	655	661	513	244	93	41	3487
1983	7	0	36	126	323	479	557	598	393	238	112	20	2889
1984	1	21	95	219	363	524	632	602	413	332	74	128	3404
1985	4	15	117	204	422	517	581	667	493	287	146	12	3465
1986	6	66	67	269	350	516	626	609	530	214	96	8	3357
1987	4	4	29	170	395	485	589	649	475	204	79	34	3117
1988	3	32	76	166	326	493	634	679	506	298	179	32	3424
1989	45	47	121	220	504	523	603	599	418	270	116	1	3467
1990	32	28	69	195	432	616	575	638	499	216	117	47	3464
1991	0	18	97	280	409	523	595	608	415	309	46	49	3349
1992	0	37	106	202	315	568	636	567	506	291	51	35	3314
1993	8	13	80	121	291	494	618	655	508	279	39	31	3137
1994	21	42	67	195	354	555	635	566	412	287	138	53	3325
1995	24	21	95	144	409	462	632	610	498	232	61	56	3244
1996	9	73	41	184	509	543	631	573	434	261	87	47	3392
1997	35	19	82	80	293	481	616	618	464	214	24	2	2928
1998	28	7	60	105	446	637	697	637	528	271	73	45	3534
1999	36	58	75	223	382	483	520	630	419	231	77	17	3151
2000	51	95	183	200	449	518	644	643	496	304	64	2	3649
2001	5	68	8	239	390	528	632	605	394	172	85	43	3169
2002	36	5	73	293	401	527	573	600	443	249	23	26	3249
2003	4	17	48	210	517	537	544	595	387	231	125	6	3221
2004	22	10	105	171	343	489	562	547	467	382	64	12	3174
2005	48	38	65	129	328	516	611	634	585	247	120	14	3335

SNOWFALL (inches) 2005 VICTORIA, TX (VCT)

YEAR	JUL	AUG	SEP	OCT	NOV	DEC	JAN	FEB	MAR	APR	MAY	JUN	TOTAL
1976-77	0.0	0.0	0.0	0.0	0.2	0.0	0.0	0.0	0.0	0.0	0.0	0.0	0.2
1977-78	0.0	0.0	0.0	0.0	0.0	0.0	0.0	0.0	0.0	0.0	0.0	0.0	0.0
1978-79	0.0	0.0	0.0	0.0	0.0	0.0	0.0	0.0	0.0	0.0	0.0	0.0	0.0
1979-80	0.0	0.0	0.0	0.0	T	0.0	0.0	0.0	0.0	0.0	0.0	0.0	T
1980-81	0.0	0.0	0.0	0.0	0.0	0.0	T	0.0	0.0	0.0	0.0	0.0	T
1981-82	0.0	0.0	0.0	0.0	0.0	0.0	T	0.0	0.0	0.0	0.0	0.0	T
1982-83	0.0	0.0	0.0	0.0	0.0	0.0	0.0	0.0	0.0	0.0	0.0	0.0	0.0
1983-84	0.0	0.0	0.0	0.0	0.0	0.0	T	0.0	0.0	0.0	0.0	0.0	T
1984-85	0.0	0.0	0.0	0.0	0.0	0.0	2.1	T	0.0	0.0	0.0	0.0	2.1
1985-86	0.0	0.0	0.0	0.0	0.0	0.0	0.0	0.0	0.0	0.0	0.0	0.0	0.0
1986-87	0.0	0.0	0.0	0.0	0.0	0.0	T	0.0	0.0	0.0	0.0	0.0	T
1987-88	0.0	0.0	0.0	0.0	0.0	0.0	0.0	T	0.0	0.0	0.0	0.0	T
1988-89	0.0	0.0	0.0	0.0	0.0	0.0	0.0	0.0	T	0.0	0.0	0.0	T
1989-90	0.0	0.0	0.0	0.0	0.0	T	0.0	0.0	T	0.0	0.0	0.0	T
1990-91	0.0	0.0	0.0	0.0	0.0	T	0.0	0.0	0.0	0.0	0.0	0.0	T
1991-92	0.0	0.0	0.0	0.0	0.0	0.0	0.0	0.0	0.0	0.0	0.0	0.0	0.0
1992-93	0.0	0.0	0.0	0.0	0.0	0.0	0.0	0.0	0.0	0.0	T	0.0	T
1993-94	0.0	0.0	0.0	0.0	0.0	0.0	0.0	T	0.0	0.0	0.0	0.0	T
1994-95	0.0	T	0.0	0.0	0.0	0.0	0.0	0.0	0.0	0.0	0.0	0.0	T
1995-96	0.0	0.0	0.0	0.0	0.0	0.0	0.0	0.0	0.0	0.0	0.0	0.0	0.0
1996-97													
1997-98													
1998-99													
1999-00													
2000-01													
2001-02													
2002-03													
2003-04													
2004-05													
2005-													
POR= 34 YRS	0.0	T	0.0	0.0	0.0	T	0.1	T	T	0.0	T	0.0	0.1

WBAN : 12912

REFERENCE NOTES:

<p>PAGE 1: THE TEMPERATURE GRAPH SHOWS NORMAL MAXIMUM AND NORMAL MINIMUM DAILY TEMPERATURES (SOLID CURVES) AND THE ACTUAL DAILY HIGH AND LOW TEMPERATURES (VERTICAL BARS).</p> <p>PAGE 2 AND 3: H/C INDICATES HEATING AND COOLING DEGREE DAYS. RH INDICATES RELATIVE HUMIDITY W/O INDICATES WEATHER AND OBSTRUCTIONS S INDICATES SUNSHINE. PR INDICATES PRESSURE. CLOUDINESS ON PAGE 3 IS THE SUM OF THE CEILOMETER AND SATELLITE DATA NOT TO EXCEED EIGHT EIGHTHS (OKTAS).</p> <p>GENERAL: T INDICATES TRACE PRECIPITATION, AN AMOUNT GREATER THAN ZERO BUT LESS THAN THE LOWEST REPORTABLE VALUE. + INDICATES THE VALUE ALSO OCCURS ON EARLIER DATES. BLANK ENTRIES DENOTE MISSING OR UNREPORTED DATA. NORMALS ARE 30-YEAR AVERAGES (1971 - 2000). ASOS INDICATES AUTOMATED SURFACE OBSERVING SYSTEM. PM INDICATES THE LAST DAY OF THE PREVIOUS MONTH. POR (PERIOD OF RECORD) BEGINS WITH THE JANUARY DATA MONTH AND IS THE NUMBER OF YEARS USED TO COMPUTE THE MEAN. INDIVIDUAL MONTHS WITHIN THE POR MAY BE MISSING. WHEN THE POR FOR A NORMAL IS LESS THAN 30 YEARS, THE NORMAL IS PROVISIONAL AND IS BASED ON THE NUMBER OF YEARS INDICATED. 0.* OR * INDICATES THE VALUE OR MEAN-DAYS-WITH IS BETWEEN 0.00 AND 0.05. CLOUDINESS FOR ASOS STATIONS DIFFERS FROM THE NON-ASOS OBSERVATION TAKEN BY A HUMAN OBSERVER. ASOS STATION CLOUDINESS IS BASED ON TIME-AVERAGED CEILOMETER DATA FOR CLOUDS AT OR BELOW 12,000 FEET AND ON SATELLITE DATA FOR CLOUDS ABOVE 12,000 FEET. THE NUMBER OF DAYS WITH CLEAR, PARTLY CLOUDY, AND CLOUDY CONDITIONS FOR ASOS STATIONS IS THE SUM OF THE CEILOMETER AND SATELLITE DATA FOR THE SUNRISE TO SUNSET PERIOD.</p>	<p>GENERAL CONTINUED: CLEAR INDICATES 0 - 2 OKTAS, PARTLY CLOUDY INDICATES 3 - 6 OKTAS, AND CLOUDY INDICATES 7 OR 8 OKTAS. WHEN AT LEAST ONE OF THE ELEMENTS (CEILOMETER OR SATELLITE) IS MISSING, THE DAILY CLOUDINESS IS NOT COMPUTED. WIND DIRECTION IS RECORDED IN TENS OF DEGREES (2 DIGITS) CLOCKWISE FROM TRUE NORTH. "00" INDICATES CALM. "36" INDICATES TRUE NORTH. RESULTANT WIND IS THE VECTOR AVERAGE OF THE SPEED AND DIRECTION. AVERAGE TEMPERATURE IS THE SUM OF THE MEAN DAILY MAXIMUM AND MINIMUM TEMPERATURE DIVIDED BY 2. SNOWFALL DATA COMPRISE ALL FORMS OF FROZEN PRECIPITATION, INCLUDING HAIL. A HEATING (COOLING) DEGREE DAY IS THE DIFFERENCE BETWEEN THE AVERAGE DAILY TEMPERATURE AND 65° F. DRY BULB IS THE TEMPERATURE OF THE AMBIENT AIR. DEW POINT IS THE TEMPERATURE TO WHICH THE AIR MUST BE COOLED TO ACHIEVE 100 PERCENT RELATIVE HUMIDITY. WET BULB IS THE TEMPERATURE THE AIR WOULD HAVE IF THE MOISTURE CONTENT WAS INCREASED TO 100 PERCENT RELATIVE HUMIDITY.</p> <p>ON JULY 1, 1996, THE NATIONAL WEATHER SERVICE BEGAN USING THE "METAR" OBSERVATION CODE THAT WAS ALREADY EMPLOYED BY MOST OTHER NATIONS OF THE WORLD. THE MOST NOTICEABLE DIFFERENCE IN THIS ANNUAL PUBLICATION WILL BE THE CHANGE IN UNITS FROM TENTHS TO EIGHTS (OKTAS) FOR REPORTING THE AMOUNT OF SKY COVER.</p>
--	---

2005  
VICTORIA,  
TEXAS (VCT)

The city of Victoria is located in the south-central Texas Coastal Plain. The climate is classified as humid subtropical. Summers are hot with about 100 days with temperatures of 90 degrees or above. However, pleasant sea breezes from the nearby Gulf of Mexico make the high temperatures bearable.

Spring is characterized by mild days, brisk winds, and occasional showers and thunderstorms. Strong southeast winds begin in March, diminish in April and May, and become pleasant sea breezes in the first half of June. Thunderstorm activity increases through March and April, reaching a peak in May. Considerable cloudiness is the rule, with almost 50 percent of the days in the spring having overcast or nearly overcast skies.

The sea breeze diminishes during the summer, and at times fails altogether, and some hot nights are experienced in late June, July, and early August. High summer humidity gives way to clear, drier air in late August. Nighttime temperatures drop to pleasant levels. Thunderstorms continue, and lawns and fields remain green.

The first norther usually arrives near the beginning of fall, in late September. October and November are ideal fall months with long periods of clear days with mild temperatures and cool nights. The amount of rainfall decreases.

The winter season weather conditions alternate between clear, cold, dry periods and cloudy, mild, drizzly days as fronts move down from the north. The temperature drops below 32 degrees on an average of about a dozen mornings per year.

The normal rainfall of about 36 inches is well distributed throughout the year, with the heaviest falls coming during the growing season. Some of the smaller streams dry up in the late summer, and during occasional periods of general drought some of the larger streams may reach pool stage.

The area is subject to occasional tropical disturbances during summer and fall. Destructive winds and torrential rains may occur in these storms. Approximately 50 days per year have thunderstorms, but hail is infrequent. Destructive storms with tornados are rare.

# STATION LOCATION

VICTORIA, TEXAS

LOCATION	Occupied From	Occupied To	Airline Distances and Directions from previous Location	LATITUDE		ELEVATION ABOVE										AUTOMATIC OBSERVING EQUIPMENT *	* TYPE M = AMOS T = AUTOB S = ASOS W = AWOS  REMARKS
				NORTH	WEST	GROUND											
						SEA LEVEL	GROUND	WIND	EXTREME	PSYCHROMETER	SUNSHINE	TIPPING BUCKET	WINDHANG	8 INCH RAIN GAGE	HYGROMETER		
*NOTE: <u>AIRPORT</u>  Terminal Building Victoria Regional AP +  + Also known as Foster Field.  Nat. Weather Svc. Bldg. Victoria Regional AP  Victoria Regional AP	6/14/61    3/3/80   12/01/95	3/3/80   12/01/95  Present	12 mi. NE   72' WSW  NA	28°51'  28°51'  28°52'	97°55'  96°55'  96°56'	104  104  f103	32 a20   d20  f103	5   5  5	5   5  5	c4   4  4	4   4  4	3   4  4	b5   d5 e5  S	a. Moved about 330' NE 4/8/64. b. Commissioned 1200' N of thermometer site 4/10/64. c. Added 8/3/77.  d. Not moved 3/3/80. e. Type change 6/26/85.  ASOS Commission 12/01/95 f. Ground elevation.			

**For Hard Copy Subscription:**

Price and ordering information: NCDC Subscribing Service Center, 310 State Route 956, Building 300, Rocket Center, WV 26726.

**INQUIRIES/COMMENTS CALL: Toll Free (866) 742-3322**

Visit our Web Site for other weather data: [www.ncdc.noaa.gov](http://www.ncdc.noaa.gov)

**Non-Subscription Request:**

NCDC Customer Services;  
 Phone: 828-271-4800  
 Fax: 828-271-4876  
 Email: [ncdc.orders@noaa.gov](mailto:ncdc.orders@noaa.gov)

OFFICIAL BUSINESS  
 PENALTY FOR PRIVATE USE \$300  
 CHANGE SERVICE REQUESTED

**FIRST CLASS  
 POSTAGE & FEES PAID  
 United States Department of Commerce  
 NOAA Permit No. G - 19**

\* NOTES: For earlier station history see previous edition.