

2005

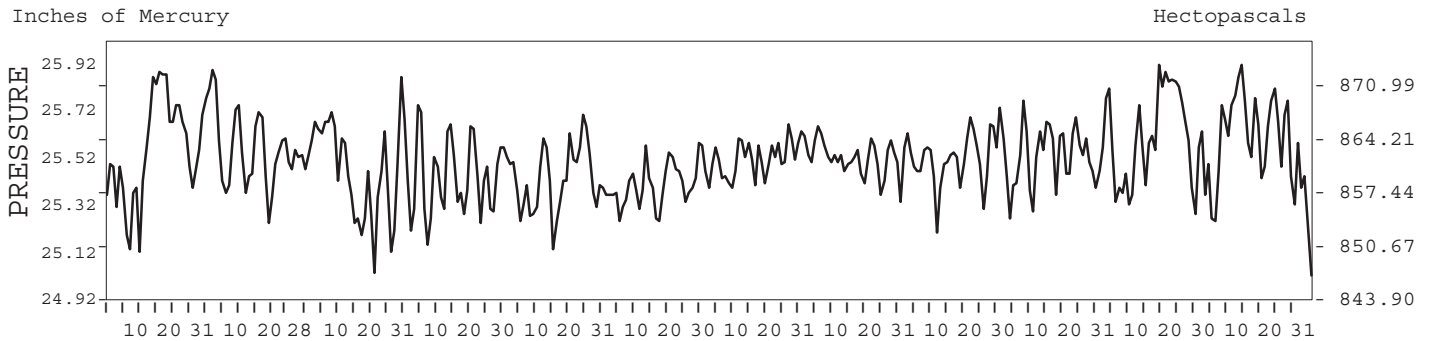
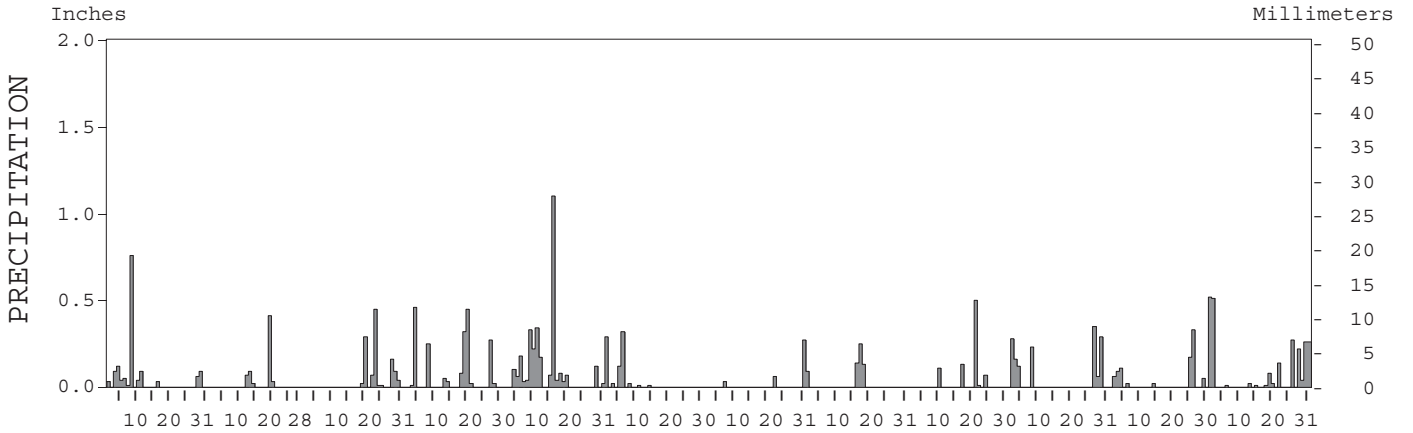
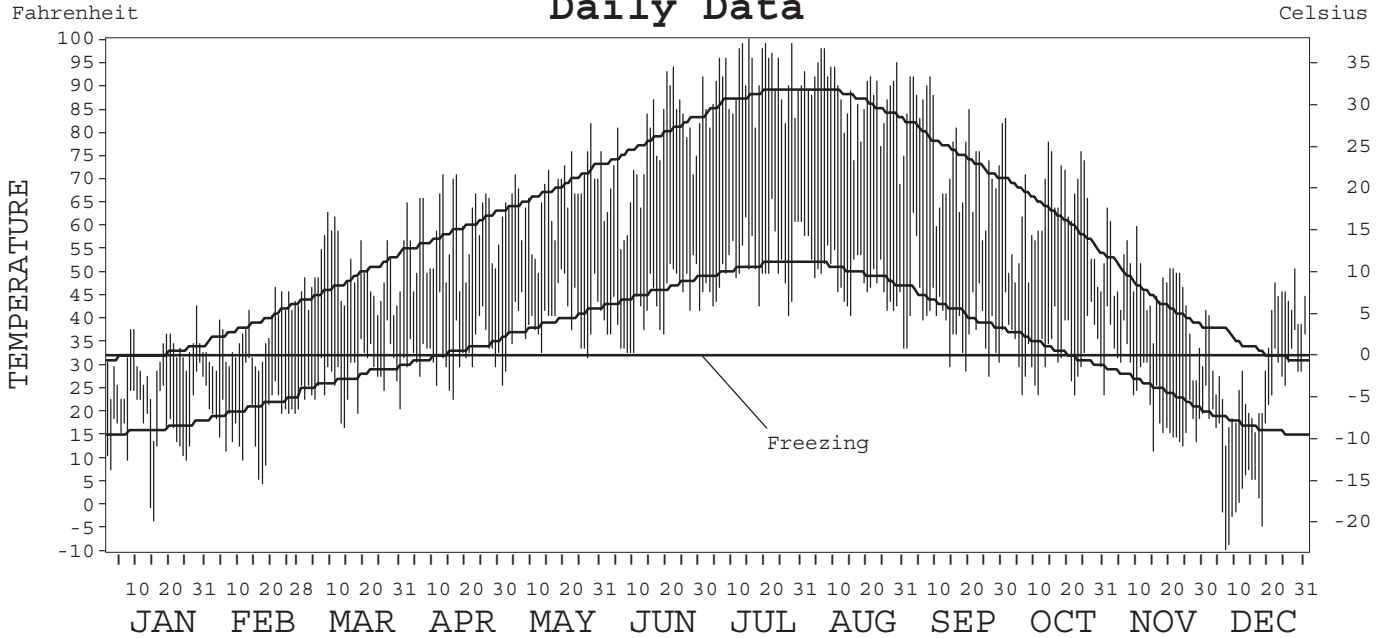
LOCAL CLIMATOLOGICAL DATA ANNUAL SUMMARY WITH COMPARATIVE DATA



ISSN 0198-1803

POCATELLO, IDAHO (PIH)

Daily Data



I CERTIFY THAT THIS IS AN OFFICIAL PUBLICATION OF THE NATIONAL OCEANIC AND ATMOSPHERIC ADMINISTRATION, AND IS COMPILED FROM RECORDS ON FILE AT THE NATIONAL CLIMATIC DATA CENTER.

Thomas R. Karl

NATIONAL OCEANIC AND ATMOSPHERIC ADMINISTRATION NATIONAL ENVIRONMENTAL SATELLITE, DATA, AND INFORMATION SERVICE NATIONAL CLIMATIC DATA CENTER ASHEVILLE, NORTH CAROLINA DIRECTOR NATIONAL CLIMATIC DATA CENTER

METEOROLOGICAL DATA FOR 2005

POCATELLO, ID (PIH)

LATITUDE: 42° 55' 13" N LONGITUDE: 112° 34' 16" W ELEVATION (FT): GRND: 4451 BARO: 4454 TIME ZONE: MOUNTAIN (UTC + 7) WBAN: 24156

ELEMENT		JAN	FEB	MAR	APR	MAY	JUN	JUL	AUG	SEP	OCT	NOV	DEC	YEAR	
TEMPERATURE °F	MEAN DAILY MAXIMUM	30.9	36.8	49.8	58.4	66.6	75.5	91.1	87.5	75.7	62.1	45.9	31.5	59.3	
	HIGHEST DAILY MAXIMUM	43	47	63	72	82	94	100	98	92	83	64	51	100	
	DATE OF OCCURRENCE	28	21	09	13	28	22	15	07+	08+	01	01	28	JUL 15	
	MEAN DAILY MINIMUM	17.6	18.7	27.8	33.1	40.0	42.8	51.6	48.6	40.1	33.4	24.0	15.8	32.8	
	LOWEST DAILY MINIMUM	-3	5	17	23	26	33	41	34	28	24	12	-9	-9	
	DATE OF OCCURRENCE	15	17	14	16	01	10+	27	31	26	31+	15	07	DEC 07	
	AVERAGE DRY BULB	24.3	27.8	38.8	45.8	53.3	59.2	71.4	68.1	57.9	47.8	35.0	23.7	46.1	
	MEAN WET BULB	23.3	25.6	34.1	38.6	46.8	49.7	55.7	53.0	46.4	40.8		21.7		
	MEAN DEW POINT	20.8	22.2	27.0	30.0	40.2	40.8	42.0	39.4	33.6	33.2		18.2		
	NUMBER OF DAYS WITH:														
	MAXIMUM ≥ 90°	0	0	0	0	0	3	19	15	4	0	0	0	0	41
	MAXIMUM ≤ 32°	18	10	0	0	0	0	0	0	0	0	3	17	48	
	MINIMUM ≤ 32°	31	28	26	14	3	0	0	0	4	15	25	27	173	
MINIMUM ≤ 0°	2	0	0	0	0	0	0	0	0	0	0	6	8		
H/C	HEATING DEGREE DAYS	1255	1037	803	567	356	196	1	23	233	527	892	1277	7167	
	COOLING DEGREE DAYS	0	0	0	0	0	29	206	126	29	0	0	0	390	
RH	MEAN (PERCENT)	86	81	65	59	65	54	38	40	46	63	71	80	62	
	HOUR 05 LST	87	87	75	78	83	82	65	67	70	81	82	84	78	
	HOUR 11 LST	83	79	60	50	52	42	28	29	37	56	67	78	55	
	HOUR 17 LST	84	69	50	42	49	33	19	20	24	42	60	78	48	
	HOUR 23 LST	89	86	69	66	75	63	40	43	51	71	75	83	68	
S	PERCENT POSSIBLE SUNSHINE														
W/O	NUMBER OF DAYS WITH:														
	HEAVY FOG (VISBY ≤ 1/4 MI)	13	7	4	0	0	0	0	0	0	0	3	4	31	
	THUNDERSTORMS	0	0	0	2	8	2	5	4	3	0	0	0	24	
CLOUDINESS	SUNRISE-SUNSET: (OKTAS)														
	CEILOMETER (≤ 12,000 FT.)														
	SATELLITE (> 12,000 FT.)														
	MIDNIGHT-MIDNIGHT: (OKTAS)														
	CEILOMETER (≤ 12,000 FT.)														
	SATELLITE (> 12,000 FT.)														
NUMBER OF DAYS WITH:															
CLEAR															
PARTLY CLOUDY															
CLOUDY															
PR	MEAN STATION PRESS. (IN.)	25.55	25.55	25.46	25.44	25.43	25.40	25.52	25.52	25.52	25.54	25.58	25.57	25.51	
	MEAN SEA-LEVEL PRESS. (IN.)	30.22	30.20	30.02		29.92	29.85	29.92	29.94	29.99	30.07		30.25		
WINDS	RESULTANT SPEED (MPH)			7.3		4.1	6.3	0.7	4.1	4.0	3.9	7.0	5.0		
	RES. DIR. (TENS OF DEGS.)			22		23	22	23	24	22	21	21	21		
	MEAN SPEED (MPH)	6.8	6.0	11.1	10.4	9.1	9.8	8.6	8.0	7.7	7.0	10.1	9.1	8.6	
	PREVAIL. DIR. (TENS OF DEGS.)	22	03	23	24	24	23	23	21	21	21	21	23	21	
	MAXIMUM 2-MINUTE WIND:														
	SPEED (MPH)	51	32	37	41	45	39	36	35	39	33	41	48	51	
	DIR. (TENS OF DEGS.)	17	23	25	24	25	23	23	23	23	24	25	23	17	
	DATE OF OCCURRENCE	08	05	12	13	09	22	07	30	09	02	12	28	JAN 08	
	MAXIMUM 5-SECOND WIND:														
	SPEED (MPH)	60	37	46	49	51	51	54	41	46	37	49	61	61	
DIR. (TENS OF DEGS.)	16	23	17	17	25	23	24	23	23	24	25	23	23		
DATE OF OCCURRENCE	08	05	28	13	09+	22+	07	30	09	02	12	28	DEC 28		
PRECIPITATION	WATER EQUIVALENT:														
	TOTAL (IN.)	1.41	0.62	1.14	1.96	3.00	0.79	0.36	0.61	0.82	1.49	0.85	2.37	15.42	
	GREATEST 24-HOUR (IN.)	0.76	0.41	0.46	0.70	1.12	0.44	0.27	0.38	0.50	0.42	0.49	0.83	1.12	
	DATE OF OCCURRENCE	08	19	23-24	19-20	15-16	05-06	31	17-18	21	02-03	25-26	01-02	MAY 15-16	
	NUMBER OF DAYS WITH:														
	PRECIPITATION ≥ 0.01	12	5	9	11	17	7	3	4	5	7	8	14	102	
PRECIPITATION ≥ 0.10	2	1	3	5	8	3	1	3	3	6	3	7	45		
PRECIPITATION ≥ 1.00	0	0	0	0	1	0	0	0	0	0	0	0	1		
SNOWFALL	SNOW, ICE PELLETS, HAIL:														
	TOTAL (IN.)	16.8	3.0	1.8	4.9	0.0	0.0	0.0	0.0	0.0	0.0	4.6	6.3	37.4	
	GREATEST 24-HOUR (IN.)	8.3	2.1	0.7	2.5	0.0	0.0	0.0	0.0	0.0	0.0	3.5	3.8	8.3	
	DATE OF OCCURRENCE	08	19	29	20							26	01	JAN 08	
	MAXIMUM SNOW DEPTH (IN.)	8	T	1	2	0	0	0	0	0	0	3	3	8	
	DATE OF OCCURRENCE	12+	20+	24	20							30+	01	JAN 12+	
NUMBER OF DAYS WITH:															
SNOWFALL ≥ 1.0	4	1	0	2	0	0	0	0	0	0	2	2	11		

NORMALS, MEANS, AND EXTREMES

POCATELLO, ID (PIH)

LATITUDE: 42° 55' 13" N LONGITUDE: 112° 34' 16" W ELEVATION (FT): GRND: 4451 BARO: 4454 TIME ZONE: MOUNTAIN (UTC + 7) WBAN: 24156

ELEMENT		POR	JAN	FEB	MAR	APR	MAY	JUN	JUL	AUG	SEP	OCT	NOV	DEC	YEAR	
TEMPERATURE °F	NORMAL DAILY MAXIMUM	30	32.5	39.0	48.5	58.5	67.7	78.3	87.5	86.8	75.7	62.0	44.5	33.8	59.6	
	MEAN DAILY MAXIMUM	58	32.5	38.3	47.4	57.9	68.0	77.9	88.2	86.9	76.0	62.4	45.3	34.5	59.6	
	HIGHEST DAILY MAXIMUM	56	60	65	75	86	97	103	104	104	98	91	75	64	104	
	YEAR OF OCCURRENCE		2003	1992	1994	1994	2003	1988	2000	1990	1976	1992	1999	1995		JUL 2000
	MEAN OF EXTREME MAXS.	58	47.6	53.1	64.0	75.7	84.9	93.4	98.4	97.7	91.1	80.2	62.6	50.8	75.0	
	NORMAL DAILY MINIMUM	30	16.3	20.9	27.3	32.6	39.2	45.7	50.9	49.9	41.8	33.3	24.9	16.8	33.3	
	MEAN DAILY MINIMUM	58	15.1	20.0	26.1	32.7	40.3	47.0	52.9	51.5	42.7	33.3	24.7	17.2	33.6	
	LOWEST DAILY MINIMUM	56	-30	-33	-12	13	20	28	34	30	19	7	-14	-29	-33	
	YEAR OF OCCURRENCE		1962	1985	1985	1997	2002	1995	1981	1992	1985	2003	1993	1990		FEB 1985
	MEAN OF EXTREME MINS.	58	-8.3	-7	10.3	21.0	28.1	35.2	41.5	39.4	28.7	18.9	6.2	-3.8	18.0	
	NORMAL DRY BULB	30	24.4	30.0	37.9	45.6	53.5	62.0	69.2	68.4	58.8	47.7	34.7	25.3	46.5	
	MEAN DRY BULB	58	23.8	29.1	36.8	45.3	54.1	62.3	70.6	69.1	59.3	47.9	35.0	25.8	46.6	
	MEAN WET BULB	22	22.6	26.0	33.2	38.9	45.7	51.3	55.9	54.0	47.5	39.6	30.5	21.1	38.9	
	MEAN DEW POINT	22	18.6	21.2	25.9	29.2	36.0	41.2	44.4	40.9	36.0	29.6	24.7	17.4	30.4	
	NORMAL NO. DAYS WITH:															
	MAXIMUM ≥ 90°	30	0.0	0.0	0.0	0.0	*	4.0	13.9	13.2	2.4	*	0.0	0.0	33.5	
MAXIMUM ≤ 32°	30	14.3	6.9	1.3	0.0	0.0	0.0	0.0	0.0	0.0	0.2	4.3	12.4	39.4		
MINIMUM ≤ 32°	30	28.6	24.7	24.0	14.4	3.5	0.3	0.0	0.1	3.4	14.0	23.8	28.4	165.2		
MINIMUM ≤ 0°	30	5.2	1.9	0.2	0.0	0.0	0.0	0.0	0.0	0.0	0.0	0.9	3.3	11.5		
H/C	NORMAL HEATING DEG. DAYS	30	1274	996	842	584	353	129	21	26	201	536	907	1240	7109	
	NORMAL COOLING DEG. DAYS	30	0	0	0	0	3	51	167	143	23	0	0	0	387	
RH	NORMAL (PERCENT)	30	77	73	65	55	54	50	44	41	47	56	70	77	59	
	HOUR 05 LST	30	80	80	77	71	73	71	66	63	67	71	78	80	73	
	HOUR 11 LST	30	75	70	60	48	46	41	35	33	38	48	66	75	53	
	HOUR 17 LST	30	72	63	51	38	37	32	25	22	28	38	60	72	45	
	HOUR 23 LST	30	79	76	70	58	59	55	48	44	51	59	73	78	62	
S	PERCENT POSSIBLE SUNSHINE	50	40	53	61	66	67	75	83	81	80	72	48	40	64	
W/O	MEAN NO. DAYS WITH:															
	HEAVY FOG (VISBY ≤ 1/4 MI)	55	4.9	3.6	1.6	0.5	0.2	0.0	0.0	0.0	0.1	0.4	1.9	4.6	17.8	
	THUNDERSTORMS	55	0.1	0.2	0.5	0.9	3.6	4.6	5.5	5.2	2.6	0.6	0.1	0.1	24.0	
CLOUDINESS	MEAN:															
	SUNRISE-SUNSET (OKTAS)	47	6.4	6.0	5.7	5.4	5.0	3.9	2.7	3.0	3.2	4.1	5.6	6.2	4.8	
	MIDNIGHT-MIDNIGHT (OKTAS)	32	6.2	5.5	5.0	5.0	4.4	3.7	2.6	2.7	2.9	3.6	5.4	5.8	4.4	
	MEAN NO. DAYS WITH:															
CLEAR	47	2.6	4.1	5.2	6.1	7.5	11.8	17.4	15.5	15.1	11.9	5.0	3.4	105.6		
PARTLY CLOUDY	47	6.7	6.4	8.1	7.8	9.8	9.5	8.9	10.6	8.2	8.3	7.1	6.8	98.2		
CLOUDY	47	21.7	17.8	17.7	16.0	13.7	8.7	4.7	4.9	6.7	10.8	17.8	20.8	161.3		
PR	MEAN STATION PRESSURE (IN)	32	25.55	25.52	25.43	25.43	25.43	25.46	25.51	25.51	25.52	25.55	25.53	24.82	25.44	
	MEAN SEA-LEVEL PRES. (IN)	21	30.24	30.15	30.04	29.94	29.90	29.90	29.92	29.93	29.98	30.07	30.14	30.25	30.04	
WINDS	MEAN SPEED (MPH)	43	9.8	10.5	11.4	11.8	10.7	10.2	9.4	9.0	9.0	9.6	10.2	9.9	10.1	
	PREVAIL. DIR (TENS OF DEGS)	27	24	24	24	24	24	24	21	24	24	24	24	24	24	
	MAXIMUM 2-MINUTE:															
	SPEED (MPH)	9	51	48	49	55	49	62	47	47	46	49	43	48	62	
	DIR. (TENS OF DEGS)		17	25	26	23	24	22	25	22	24	25	18	23	22	
	YEAR OF OCCURRENCE		2005	2000	2003	1998	1998	2004	2004	1999	1999	2004	2002	2005	JUN 2004	
MAXIMUM 5-SECOND:																
SPEED (MPH)	9	60	59	62	56	57	84	55	67	59	58	52	61	84		
DIR. (TENS OF DEGS)		16	24	27	24	24	22	19	25	17	25	16	23	22		
YEAR OF OCCURRENCE		2005	2000	2001	2002	1998	2004	1997	2004	1997	2004	2002	2005	JUN 2004		
PRECIPITATION	NORMAL (IN)	30	1.14	1.01	1.38	1.18	1.51	0.91	0.70	0.66	0.89	0.97	1.13	1.10	12.58	
	MAXIMUM MONTHLY (IN)	56	3.24	2.63	2.95	3.30	3.29	3.30	2.28	3.98	3.43	2.56	2.84	3.39	3.98	
	YEAR OF OCCURRENCE		1980	1986	1983	1963	1980	1995	1984	1968	1982	1956	1983	1983	AUG 1968	
	MINIMUM MONTHLY (IN)	56	0.21	0.12	0.10	0.06	0.19	0.02	T	T	0.00	0.00	0.01	0.07	0.00	
	YEAR OF OCCURRENCE		1992	1970	1965	1977	1969	1974	1988	1958	1987	1988	1976	1989	OCT 1988	
	MAXIMUM IN 24 HOURS (IN)	56	0.97	0.67	1.27	1.25	1.67	1.18	0.98	1.16	1.24	1.82	0.85	0.94	1.82	
	YEAR OF OCCURRENCE		1970	1983	1990	1976	1970	1993	1965	1972	2000	1976	1969	1983	OCT 1976	
	NORMAL NO. DAYS WITH:															
PRECIPITATION ≥ 0.01	30	12.7	10.4	10.4	8.8	10.2	6.4	4.6	4.8	5.4	5.8	9.9	10.6	100.0		
PRECIPITATION ≥ 1.00	30	0.0	0.0	0.0	0.0	*	0.0	0.0	0.0	0.1	0.1	0.0	0.0	0.2		
SNOWFALL	NORMAL (IN)	30	9.3	7.0	5.8	3.6	0.9	0.*	0.0	0.0	0.*	2.3	6.1	9.6	44.6	
	MAXIMUM MONTHLY (IN)	56	29.6	30.5	16.6	15.5	5.5	0.4	T	T	2.0	12.6	27.5	33.7	33.7	
	YEAR OF OCCURRENCE		1993	2004	1985	1976	1983	1995	1996	1995	1965	1971	1985	1983	DEC 1983	
	MAXIMUM IN 24 HOURS (IN)	56	10.1	10.0	8.4	10.0	5.2	0.4	T	T	2.0	8.0	7.8	13.0	13.0	
	YEAR OF OCCURRENCE		1950	2004	1985	1976	1983	1995	1995	1995	1965	1980	1992	2003	DEC 2003	
	MAXIMUM SNOW DEPTH (IN)	57	20	20	13	13	3	0	0	0	1	8	10	16	20	
	YEAR OF OCCURRENCE		1949	1949	1964	1976	1975				1965	1997	1985	2003	FEB 1949	
NORMAL NO. DAYS WITH:																
SNOWFALL ≥ 1.0	30	3.2	2.6	2.0	1.0	0.2	0.0	0.0	0.0	0.0	0.6	2.1	3.1	14.8		

PRECIPITATION (inches) 2005 POCATELLO, ID (PIH)

YEAR	JAN	FEB	MAR	APR	MAY	JUN	JUL	AUG	SEP	OCT	NOV	DEC	ANNUAL
1976	0.45	1.42	1.08	2.82	0.51	0.98	0.77	0.74	0.45	1.83	0.01	0.20	11.26
1977	0.70	0.37	0.79	0.06	2.09	0.77	0.58	0.32	0.99	0.18	0.94	1.08	8.87
1978	1.17	1.07	1.16	1.24	1.99	0.22	0.03	0.41	0.87	0.06	1.39	0.74	10.35
1979	1.09	1.17	0.79	0.63	0.33	0.96	0.59	0.70	0.23	0.79	1.12	0.40	8.80
1980	3.24	1.12	1.52	0.55	3.29	0.86	0.72	1.25	1.34	1.88	1.13	0.37	17.27
1981	0.72	0.47	1.69	1.27	3.24	0.68	0.29	0.32	0.08	1.52	1.67	2.22	14.17
1982	1.40	0.91	1.98	1.02	1.06	0.47	1.27	2.02	3.43	0.99	1.17	2.00	17.72
1983	0.48	1.12	2.95	0.72	1.99	1.19	1.13	1.67	1.64	1.21	2.84	3.39	20.33
1984	0.49	2.06	0.63	2.13	0.69	1.33	2.28	0.71	0.50	0.89	0.96	0.53	13.20
1985	0.71	0.96	1.55	0.29	1.27	1.04	0.48	0.05	1.42	0.50	2.37	1.17	11.81
1986	1.07	2.63	0.87	2.56	1.90	0.33	0.12	0.14	1.33	0.39	0.89	0.20	12.43
1987	1.03	0.71	0.84	0.47	2.02	0.67	1.93	0.66	0.00	0.25	0.44	1.21	10.23
1988	1.06	0.21	0.83	0.97	0.78	0.37	T	0.20	0.04	0.00	2.27	1.19	7.92
1989	0.59	1.36	2.91	0.33	0.76	0.62	0.11	0.43	0.48	0.84	1.03	0.07	9.53
1990	0.53	0.24	2.28	1.43	1.37	0.75	0.14	0.70	0.33	0.31	0.92	1.15	10.15
1991	0.71	0.28	2.25	2.56	3.02	0.59	0.12	0.85	0.66	0.74	1.65	0.22	13.65
1992	0.21	0.65	0.47	0.72	0.25	1.34	0.71	0.37	0.08	0.98	1.37	1.82	8.97
1993	2.30	2.04	1.68	1.54	1.93	2.95	1.07	1.90	0.27	1.01	0.54	0.65	17.88
1994	0.59	1.46	0.11	0.43	1.57	0.10	0.60	0.40	0.38	1.33	0.85	1.27	9.09
1995	1.49	0.40	2.94	1.06	1.76	3.30	0.38	0.69	0.50	0.28	1.30	1.96	16.06
1996	1.15	0.68	1.42	0.91	2.93	0.03	0.36	0.12	1.32	0.54	1.00	3.13	13.59
1997	1.86	0.13	0.75	1.16	0.86	1.19	1.65	1.59	1.67	1.33	0.37	0.66	13.22
1998	1.98	1.44	1.18	0.69	2.17	1.27	0.57	T	1.89	0.28	1.29	0.73	13.49
1999	1.51	1.15	0.55	1.84	2.15	0.84	0.37	1.06	0.02	0.39	0.11	0.27	10.26
2000	1.45	1.50	0.81	0.60	0.85	0.23	0.14	0.12	1.31	1.16	0.55	0.42	9.14
2001	1.02	0.78	0.60	0.56	0.35	0.23	0.70	0.06	0.50	0.48	0.73	1.08	7.09
2002	0.72	0.21	0.89	1.00	1.12	0.23	0.34	T	1.10	0.40	0.80	0.43	7.24
2003	0.40	1.03	0.54	1.36	0.59	0.06	T	0.90	0.48	T	1.10	2.12	8.58
2004	0.97	2.38	0.64	0.90	1.02	0.76	1.00	0.42	0.85	1.73	0.47	0.83	11.97
2005	1.41	0.62	1.14	1.96	3.00	0.79	0.36	0.61	0.82	1.49	0.85	2.37	15.42
POR= 106 YRS	1.21	1.03	1.23	1.28	1.40	1.05	0.63	0.62	0.85	0.91	0.99	1.06	12.26

WBAN : 24156

AVERAGE TEMPERATURE (°F) 2005 POCATELLO, ID (PIH)

YEAR	JAN	FEB	MAR	APR	MAY	JUN	JUL	AUG	SEP	OCT	NOV	DEC	ANNUAL
1976	26.9	29.4	32.6	44.3	57.7	61.6	72.0	65.9	61.1	46.8	37.7	28.4	47.0
1977	17.1	27.5	34.9	49.9	51.7	68.9	70.8	68.9	59.7	50.4	37.1	32.9	47.5
1978	31.1	33.6	42.9	45.9	51.0	61.8	70.1	66.9	58.1	49.5	31.8	20.0	46.9
1979	10.7	27.9	36.1	44.0	54.4	61.7	71.4	69.2	64.7	51.1	28.4	29.3	45.7
1980	24.7	34.5	36.2	48.0	51.4	59.2	68.6	65.2	58.9	46.2	34.7	31.7	46.6
1981	28.5	29.5	39.0	47.5	51.6	61.8	69.6	72.0	61.4	45.4	38.1	30.8	47.9
1982	20.2	23.5	37.7	41.3	51.8	61.8	67.9	70.8	58.3	45.2	31.9	25.3	44.6
1983	31.5	34.0	40.3	42.3	51.5	60.7	67.0	71.1	60.2	49.3	36.3	19.9	47.0
1984	17.7	20.3	34.2	42.8	54.5	59.0	70.1	70.3	58.3	43.8	34.8	19.6	43.8
1985	12.9	18.5	27.5	49.0	56.9	64.1	73.0	66.2	54.2	45.5	26.7	11.4	42.2
1986	23.4	35.5	44.2	45.0	52.8	67.4	67.1	70.5	54.1	48.0	36.0	24.5	47.4
1987	19.2	33.6	39.3	51.5	57.7	65.2	67.7	67.2	60.7	50.4	36.3	26.0	47.9
1988	21.3	32.8	37.6	48.6	54.2	69.6	73.3	68.7	58.0	55.3	35.3	21.8	48.0
1989	19.4	18.9	38.3	49.2	53.4	62.1	73.1	66.8	59.8	46.8	37.0	26.7	46.0
1990	30.0	28.3	40.0	50.1	51.8	62.5	70.9	69.0	65.7	47.8	37.7	14.8	47.4
1991	19.4	36.7	38.5	44.4	51.1	61.1	70.9	72.4	60.0	47.6	32.8	26.4	46.8
1992	26.0	38.0	44.1	51.3	60.2	63.9	67.4	69.6	59.3	51.4	28.8	22.1	48.5
1993	18.1	20.5	36.1	44.4	57.6	57.6	61.1	64.5	57.5	47.4	27.6	26.1	43.2
1994	32.3	29.2	41.2	48.3	58.2	64.4	70.5	72.0	62.3	46.7	29.5	25.8	48.4
1995	30.7	36.5	39.0	44.6	52.0	58.6	67.6	68.4	59.9	46.8	42.2	31.3	48.1
1996	27.8	30.7	39.4	45.4	51.8	63.1	71.0	67.4	56.0	46.0	37.0	30.5	47.2
1997	27.3	30.5	39.4	42.4	56.5	62.5	66.7	68.8	61.4	45.7	35.1	23.2	46.6
1998	33.1	32.7	37.0	44.5	52.0	57.5	72.5	70.8	63.4	46.9	39.0	22.7	47.7
1999	29.9	31.2	39.4	42.6	50.9	60.5	68.3	68.8	56.8	48.6	41.3	26.4	47.1
2000	29.1	36.5	38.2	49.4	55.6	63.6	70.9	71.8	58.8	47.4	25.8	24.8	47.7
2001	17.2	23.3	38.5	44.9	57.3	62.3	71.1	71.6	62.0	48.4	37.4	21.5	46.3
2002	22.8	18.5	32.6	46.6	53.6	63.1	73.3	66.1	59.5	42.5	32.5	31.4	45.2
2003	34.0	28.8	41.2	43.9	54.5	62.9	74.6	72.2	58.6	50.7	31.9	30.9	48.7
2004	19.8	25.1	41.6	47.8	54.4	62.7	70.4	66.8	57.0	48.8	33.4	30.1	46.5
2005	24.3	27.8	38.8	45.8	53.3	59.2	71.4	68.1	57.9	47.8	35.0	23.7	46.1
POR= 106 YRS	24.4	29.2	37.0	45.9	54.4	62.7	71.3	69.5	59.6	48.7	36.1	26.8	47.1

HEATING DEGREE DAYS (base 65°F) 2005 POCATELLO, ID (PIH)

YEAR	JUL	AUG	SEP	OCT	NOV	DEC	JAN	FEB	MAR	APR	MAY	JUN	TOTAL
1976-77	1	34	143	561	811	1127	1478	1043	926	445	406	6	6981
1977-78	1	38	189	447	831	990	1045	875	678	567	431	119	6211
1978-79	10	59	241	473	990	1387	1678	1034	887	623	320	155	7857
1979-80	1	10	66	422	1090	1100	1245	876	888	507	415	184	6804
1980-81	5	57	182	576	899	1026	1125	988	801	516	407	127	6709
1981-82	16	9	130	603	800	1051	1382	1161	838	703	406	139	7238
1982-83	38	0	216	607	987	1227	1029	863	760	675	415	141	6958
1983-84	61	3	163	478	854	1392	1461	1291	949	658	333	205	7848
1984-85	5	7	221	648	897	1400	1612	1298	1157	472	246	85	8048
1985-86	0	44	321	597	1143	1657	1281	818	636	592	389	35	7513
1986-87	28	5	326	519	864	1247	1410	875	792	398	231	64	6759
1987-88	46	31	144	445	854	1203	1348	926	843	485	340	38	6703
1988-89	1	3	229	295	888	1330	1408	1292	820	469	355	113	7203
1989-90	0	47	159	556	831	1183	1079	1022	766	438	399	139	6619
1990-91	3	20	53	526	813	1555	1406	786	813	610	425	122	7132
1991-92	3	1	176	533	960	1188	1201	776	639	407	154	97	6135
1992-93	23	63	175	417	1078	1323	1445	1240	890	612	226	235	7727
1993-94	136	67	219	539	1115	1200	1006	999	734	492	207	90	6804
1994-95	17	5	100	559	1058	1208	1057	790	800	607	394	200	6795
1995-96	25	27	186	556	677	1038	1145	988	784	581	403	87	6497
1996-97	2	30	270	579	832	1061	1158	959	784	673	264	83	6695
1997-98	54	12	148	594	891	1288	979	898	860	609	393	227	6953
1998-99	0	6	118	555	775	1305	1081	940	785	664	431	164	6824
1999-00	19	18	240	505	703	1188	1106	819	825	462	291	84	6260
2000-01	3	4	208	537	1170	1239	1475	1162	815	594	238	147	7592
2001-02	1	0	121	510	817	1338	1304	1294	996	548	364	130	7423
2002-03	1	31	190	689	968	1034	954	1007	730	628	363	106	6701
2003-04	0	11	206	435	987	1050	1396	1148	717	507	326	94	6877
2004-05	3	47	238	496	941	1073	1255	1037	803	567	356	196	7012
2005-	1	23	233	527	892	1277							

WBAN : 24156

COOLING DEGREE DAYS (base 65°F) 2005 POCATELLO, ID (PIH)

YEAR	JAN	FEB	MAR	APR	MAY	JUN	JUL	AUG	SEP	OCT	NOV	DEC	ANNUAL
1976	0	0	0	0	1	46	227	70	28	0	0	0	372
1977	0	0	0	0	1	129	190	164	35	0	0	0	519
1978	0	0	0	0	0	28	177	123	41	0	0	0	369
1979	0	0	0	0	0	64	207	145	63	0	0	0	479
1980	0	0	0	3	0	17	125	70	6	0	0	0	221
1981	0	0	0	0	0	38	168	232	31	0	0	0	469
1982	0	0	0	0	2	48	133	187	16	0	0	0	386
1983	0	0	0	0	4	19	131	199	25	0	0	0	378
1984	0	0	0	0	15	33	168	178	25	0	0	0	419
1985	0	0	0	0	5	65	257	90	3	0	0	0	420
1986	0	0	0	0	17	110	100	185	4	0	0	0	416
1987	0	0	0	0	8	74	134	104	23	0	0	0	343
1988	0	0	0	0	8	181	261	123	25	0	0	0	598
1989	0	0	0	1	4	34	255	109	10	0	0	0	413
1990	0	0	0	0	0	68	194	152	79	0	0	0	493
1991	0	0	0	0	0	12	192	237	32	0	0	0	473
1992	0	0	0	0	15	73	103	212	11	2	0	0	416
1993	0	0	0	0	3	16	24	57	2	1	0	0	103
1994	0	0	0	1	4	78	195	228	27	0	0	0	533
1995	0	0	0	0	0	14	110	137	40	1	0	0	302
1996	0	0	0	0	0	36	194	109	8	0	0	0	347
1997	0	0	0	0	8	19	114	135	46	0	0	0	322
1998	0	0	0	0	0	8	237	192	77	0	0	0	514
1999	0	0	0	0	3	35	128	139	1	0	0	0	306
2000	0	0	0	0	7	48	196	221	31	0	0	0	503
2001	0	0	0	0	8	72	194	211	36	0	0	0	521
2002	0	0	0	0	16	80	266	71	31	0	0	0	464
2003	0	0	0	0	43	51	304	238	21	0	0	0	657
2004	0	0	0	0	4	32	178	112	5	0	0	0	331
2005	0	0	0	0	0	29	206	126	29	0	0	0	390

SNOWFALL (inches) 2005 POCATELLO, ID (PIH)

YEAR	JUL	AUG	SEP	OCT	NOV	DEC	JAN	FEB	MAR	APR	MAY	JUN	TOTAL
1976-77	0.0	0.0	0.0	0.0	0.2	1.5	10.3	0.6	7.6	0.6	1.1	0.0	21.9
1977-78	0.0	0.0	0.0	0.3	2.6	4.2	5.8	7.8	3.6	0.4	0.9	0.0	25.6
1978-79	0.0	0.0	T	0.0	11.5	7.6	14.5	9.7	3.1	3.7	0.3	T	50.4
1979-80	0.0	0.0	0.0	0.8	8.9	2.5	12.7	1.9	7.2	1.5	T	0.0	35.5
1980-81	0.0	0.0	0.0	8.0	2.7	2.4	5.9	2.9	6.3	0.3	1.0	0.2	29.7
1981-82	0.0	0.0	0.0	1.9	2.3	17.9	22.3	5.8	13.6	2.4	0.2	0.0	66.4
1982-83	0.0	0.0	T	0.5	7.3	18.3	6.2	4.9	10.5	5.3	5.5	0.0	58.5
1983-84	0.0	0.0	1.0	0.0	10.7	33.7	6.5	20.1	4.3	9.1	0.2	0.0	85.6
1984-85	0.0	0.0	T	3.7	4.3	5.7	9.3	11.9	16.6	1.3	0.0	0.0	52.8
1985-86	0.0	0.0	T	1.4	27.5	11.5	5.7	6.0	3.7	11.5	1.8	0.0	69.1
1986-87	0.0	0.0	T	0.0	8.6	1.7	13.1	4.5	2.7	2.1	0.0	0.0	32.7
1987-88	0.0	0.0	0.0	0.0	1.6	8.4	8.9	1.1	3.3	1.5	2.6	0.0	27.4
1988-89	0.0	0.0	0.0	0.0	7.7	17.0	6.2	12.0	5.9	0.3	0.5	0.0	49.6
1989-90	0.0	0.0	0.0	8.2	2.5	1.2	3.5	3.1	14.7	T	1.6	0.0	34.8
1990-91	0.0	T	0.0	0.1	3.8	15.9	8.0	1.5	8.3	9.8	1.8	0.0	49.2
1991-92	0.0	0.0	0.0	2.5	9.1	1.9	3.1	0.9	0.6	0.4	0.0	0.0	18.5
1992-93	0.0	0.0	0.0	0.1	15.2	19.9	29.6	21.3	1.5	5.5	0.2	T	93.3
1993-94	0.0	T	0.0	0.0	6.2	6.3	3.8	11.6	0.7	1.0	T	T	29.6
1994-95	0.0	0.0	0.0	T	4.4	10.1	6.2	4.4	3.0	1.8	T	0.4	30.3
1995-96	T	T	T	1.2	4.3	5.8	8.7	4.4	4.6	0.7	T	0.0	29.7
1996-97	T	0.0	0.0	3.9	1.4	19.9	10.4	1.2	6.0	0.3	T	0.0	43.1
1997-98	0.0	T	0.0	11.2	0.5	5.4	4.5	10.2	5.8	T	T	T	37.6
1998-99	0.0	0.0	0.0	T	2.7	7.5	9.6	3.2	1.3	3.3	4.4	0.0	32.0
1999-00	T	T	0.0	T	T	3.4	7.6	6.9	3.1	0.0	T	0.0	21.0
2000-01	0.0	0.0	T	0.5	4.5	3.7	11.2	5.4	3.8	2.5	0.0	0.0	31.6
2001-02	0.0	0.0	T	0.0	2.5	14.9	13.5	2.3	5.4	12.9	T	0.0	51.5
2002-03	0.0	0.0	0.0	1.7	0.2	3.0	1.0	5.8	0.4	3.9	T	0.0	16.0
2003-04	0.0	0.0	0.0	T	1.4	19.8	10.6	30.5	1.5	0.7	0.0	0.0	64.5
2004-05	0.0	0.0	0.0	0.2	5.5	7.8	16.8	3.0	1.8	4.9	0.0	0.0	40.0
2005-	0.0	0.0	0.0	0.0	4.6	6.3							
POR= 55 YRS	T	T	0.1	2.0	4.8	8.8	9.6	6.4	5.2	4.0	0.7	0.0	41.6

WBAN : 24156

REFERENCE NOTES :

<p>PAGE 1: THE TEMPERATURE GRAPH SHOWS NORMAL MAXIMUM AND NORMAL MINIMUM DAILY TEMPERATURES (SOLID CURVES) AND THE ACTUAL DAILY HIGH AND LOW TEMPERATURES (VERTICAL BARS).</p> <p>PAGE 2 AND 3: H/C INDICATES HEATING AND COOLING DEGREE DAYS. RH INDICATES RELATIVE HUMIDITY W/O INDICATES WEATHER AND OBSTRUCTIONS S INDICATES SUNSHINE. PR INDICATES PRESSURE. CLOUDINESS ON PAGE 3 IS THE SUM OF THE CEILOMETER AND SATELLITE DATA NOT TO EXCEED EIGHT EIGHTHS(OKTAS).</p> <p>GENERAL: T INDICATES TRACE PRECIPITATION, AN AMOUNT GREATER THAN ZERO BUT LESS THAN THE LOWEST REPORTABLE VALUE. + INDICATES THE VALUE ALSO OCCURS ON EARLIER DATES. BLANK ENTRIES DENOTE MISSING OR UNREPORTED DATA. NORMALS ARE 30-YEAR AVERAGES (1971 - 2000). ASOS INDICATES AUTOMATED SURFACE OBSERVING SYSTEM. PM INDICATES THE LAST DAY OF THE PREVIOUS MONTH. POR (PERIOD OF RECORD) BEGINS WITH THE JANUARY DATA MONTH AND IS THE NUMBER OF YEARS USED TO COMPUTE THE MEAN. INDIVIDUAL MONTHS WITHIN THE POR MAY BE MISSING. WHEN THE POR FOR A NORMAL IS LESS THAN 30 YEARS, THE NORMAL IS PROVISIONAL AND IS BASED ON THE NUMBER OF YEARS INDICATED. 0.* OR * INDICATES THE VALUE OR MEAN-DAYS-WITH IS BETWEEN 0.00 AND 0.05. CLOUDINESS FOR ASOS STATIONS DIFFERS FROM THE NON-ASOS OBSERVATION TAKEN BY A HUMAN OBSERVER. ASOS STATION CLOUDINESS IS BASED ON TIME-AVERAGED CEILOMETER DATA FOR CLOUDS AT OR BELOW 12,000 FEET AND ON SATELLITE DATA FOR CLOUDS ABOVE 12,000 FEET. THE NUMBER OF DAYS WITH CLEAR, PARTLY CLOUDY, AND CLOUDY CONDITIONS FOR ASOS STATIONS IS THE SUM OF THE CEILOMETER AND SATELLITE DATA FOR THE SUNRISE TO SUNSET PERIOD.</p>	<p>GENERAL CONTINUED: CLEAR INDICATES 0 - 2 OKTAS, PARTLY CLOUDY INDICATES 3 - 6 OKTAS, AND CLOUDY INDICATES 7 OR 8 OKTAS. WHEN AT LEAST ONE OF THE ELEMENTS (CEILOMETER OR SATELLITE) IS MISSING, THE DAILY CLOUDINESS IS NOT COMPUTED. WIND DIRECTION IS RECORDED IN TENS OF DEGREES (2 DIGITS) CLOCKWISE FROM TRUE NORTH. "00" INDICATES CALM. "36" INDICATES TRUE NORTH. RESULTANT WIND IS THE VECTOR AVERAGE OF THE SPEED AND DIRECTION. AVERAGE TEMPERATURE IS THE SUM OF THE MEAN DAILY MAXIMUM AND MINIMUM TEMPERATURE DIVIDED BY 2. SNOWFALL DATA COMPRISE ALL FORMS OF FROZEN PRECIPITATION, INCLUDING HAIL. A HEATING (COOLING) DEGREE DAY IS THE DIFFERENCE BETWEEN THE AVERAGE DAILY TEMPERATURE AND 65° F. DRY BULB IS THE TEMPERATURE OF THE AMBIENT AIR. DEW POINT IS THE TEMPERATURE TO WHICH THE AIR MUST BE COOLED TO ACHIEVE 100 PERCENT RELATIVE HUMIDITY. WET BULB IS THE TEMPERATURE THE AIR WOULD HAVE IF THE MOISTURE CONTENT WAS INCREASED TO 100 PERCENT RELATIVE HUMIDITY.</p> <p>ON JULY 1, 1996, THE NATIONAL WEATHER SERVICE BEGAN USING THE "METAR" OBSERVATION CODE THAT WAS ALREADY EMPLOYED BY MOST OTHER NATIONS OF THE WORLD. THE MOST NOTICEABLE DIFFERENCE IN THIS ANNUAL PUBLICATION WILL BE THE CHANGE IN UNITS FROM TENTHS TO EIGHTS(OKTAS) FOR REPORTING THE AMOUNT OF SKY COVER.</p>
---	--

2005 POCATELLO, IDAHO (PIH)

Pocatello is located in the Snake River Valley at the mouth of Portneuf Canyon at an elevation of about 4,500 feet above sea level. A desert composed of sand, lava rock, and craters, extends to the west, while to the east the ground level rises steadily towards the crests of the Continental Divide. Agriculture, which is practiced extensively in the Snake River Valley, depends upon irrigation for all crops because rainfall during the growing season is insufficient.

Except in autumn, which is the season of the finest weather in Pocatello, the main feature of the climate is its variety. In winter there are frequent periods of persistent southwest wind, with a resulting mildness that matches the winters of the north Pacific Coast. There are also periods of several days when the temperature stays below freezing and approaches or falls below zero.

During cold periods, precipitation falling as snow occasionally accumulates to a depth of a foot or more. Cloudy and unsettled weather prevails throughout the winter, with measurable amounts of precipitation on about one-third of the days.

In the spring there is a gradual warming. Normally, spring months are the wettest and windiest. Winds of 20 to 30 mph for days at a time are common.

The summer season begins with a relatively sudden break in the disagreeable spring weather. Home heating, usually discontinued about the first of June, is sometimes needed intermittently until the

first part of July. Suitable weather for outside evening activities is very uncertain during June, even though the afternoons may be mild. As night falls, the temperature often drops rapidly into the 40s, accompanied by a chilling wind from snows remaining on the nearby mountains. During the summer, precipitation usually falls as local showers, often accompanied by light to moderate thunderstorms and occasionally by hail. Damage by excessive precipitation, lightning, high winds, or hail is uncommon and quite localized. Long periods of extremely hot weather in July and August are also uncommon. Although afternoon temperatures may run into the 90s, nights are usually cool.

Exceptionally fine weather predominates during the autumn season. The sudden summer showers are gradually replaced by short periods of cloudy and unsettled weather with more general rains. Continuous home heating is not needed until mid-October. Evenings during September are ideal for outdoor activities, and pleasant afternoons are the rule until toward the end of November. The first cold wave may appear during late November but usually not until late December.

Based on the 1951-1980 period, the average first occurrence of 32 degrees Fahrenheit in the fall is September 20 and the average last occurrence in the spring is May 20.

STATION LOCATION

POCATELLO, IDAHO

LOCATION	Occupied From	Occupied To	Airline Distances and Directions from previous Location	LATITUDE NORTH	LONGITUDE WEST	ELEVATION ABOVE										AUTOMATIC OBSERVING EQUIPMENT *	* TYPE M = AMOS T = AUTOB S = ASOS W = AWOS REMARKS
						SEA LEVEL		GROUND									
						GROUND	TEMPERATURE	WIND INSTRUMENT	EXTREME THERMOMETERS	PSYCHROMETER	SUNSHINE SWITCH	TIPPING BUCKET	RAIN GAUGE	WINDHOLE	8 INCH RAIN GAUGE		
*NOTE:																	
<u>AIRPORT</u>																	
Pocatello Municipal Airport, McDougal Field	9/01/38	5/17/49		42°55'	112°32'	4462	33	5	5		4	4	9				
Pocatello Municipal Airport, Phillips Field	5/17/49	12/18/51	2.5 mi. W	42°55'	112°36'	4444	34	6	6		3	3	3				
Pocatello Airport	12/18/51	7/06/72	No Change	42°55'	112°36'	e4454	a68 b34 c20	6	6		3	4		d5	Name of Airport changed from Phillips Field 5/8/56. a. Direct reading. b. Recording. c. Effective 8/6/60 for direct reading and recording on site 2475 feet to NNW. d. Commissioned 2475 feet NNW of thermometer site 9/15/63. e. 4444 feet to 9/15/63.		
Terminal Building Municipal Airport	7/06/72	03/01/96	300 ft. SW	42°55'	112°36'	4454	f20	@20	@20	22	@17	@17	NA g17	f5 h5	NA f. Same site as prior to 7/6/72. @ - Corrected heights. Data previously published was incorrect. g. Installed 6/30/80. h. Type change 8/8/85.		
Municipal Airport	03/01/96	Present	NA	42°55'	112°34'	i4451								S	ASOS Commissioned 03/01/96 i. Ground elevation.		

For Hard Copy Subscription:

Price and ordering information: NCDC Subscribing Service Center, 310 State Route 956, Building 300, Rocket Center, WV 26726.

INQUIRIES/COMMENTS CALL: Toll Free (866) 742-3322

Visit our Web Site for other weather data: www.ncdc.noaa.gov

Non-Subscription Request:

NCDC Customer Services;

Phone: 828-271-4800

Fax: 828-271-4876

Email: ncdc.orders@noaa.gov

OFFICIAL BUSINESS

PENALTY FOR PRIVATE USE \$300

CHANGE SERVICE REQUESTED

FIRST CLASS
POSTAGE & FEES PAID
 United States Department of Commerce
 NOAA Permit No. G - 19

* NOTES: For earlier station history see previous edition.