

2005

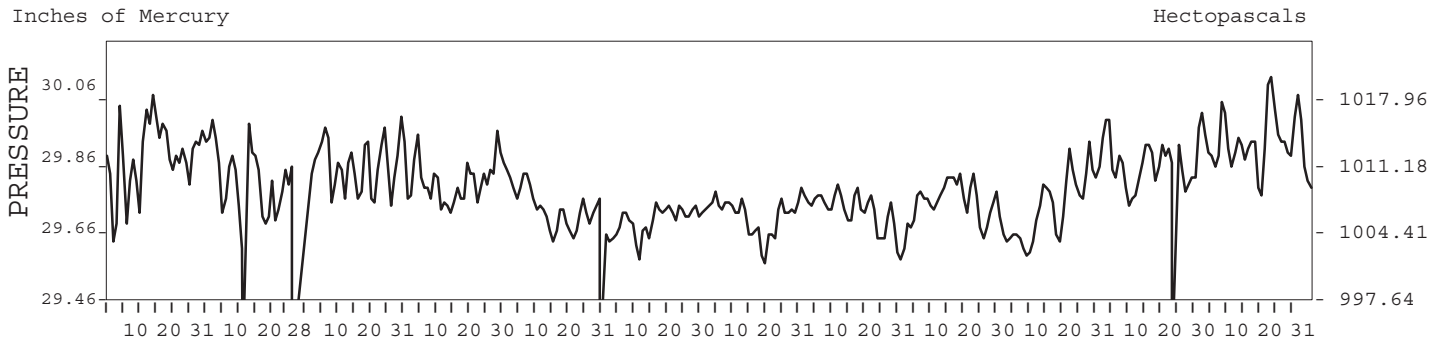
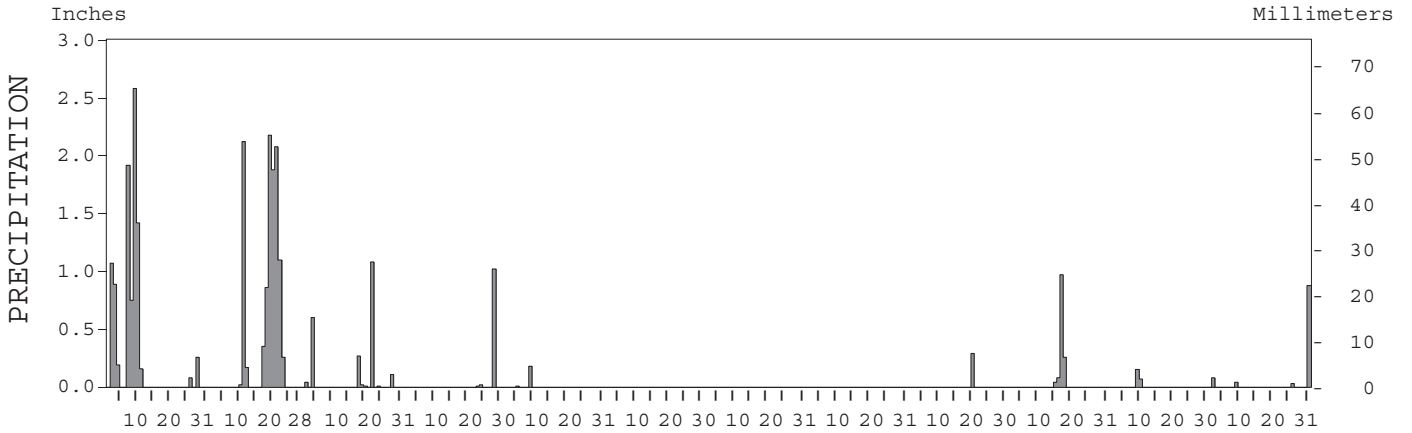
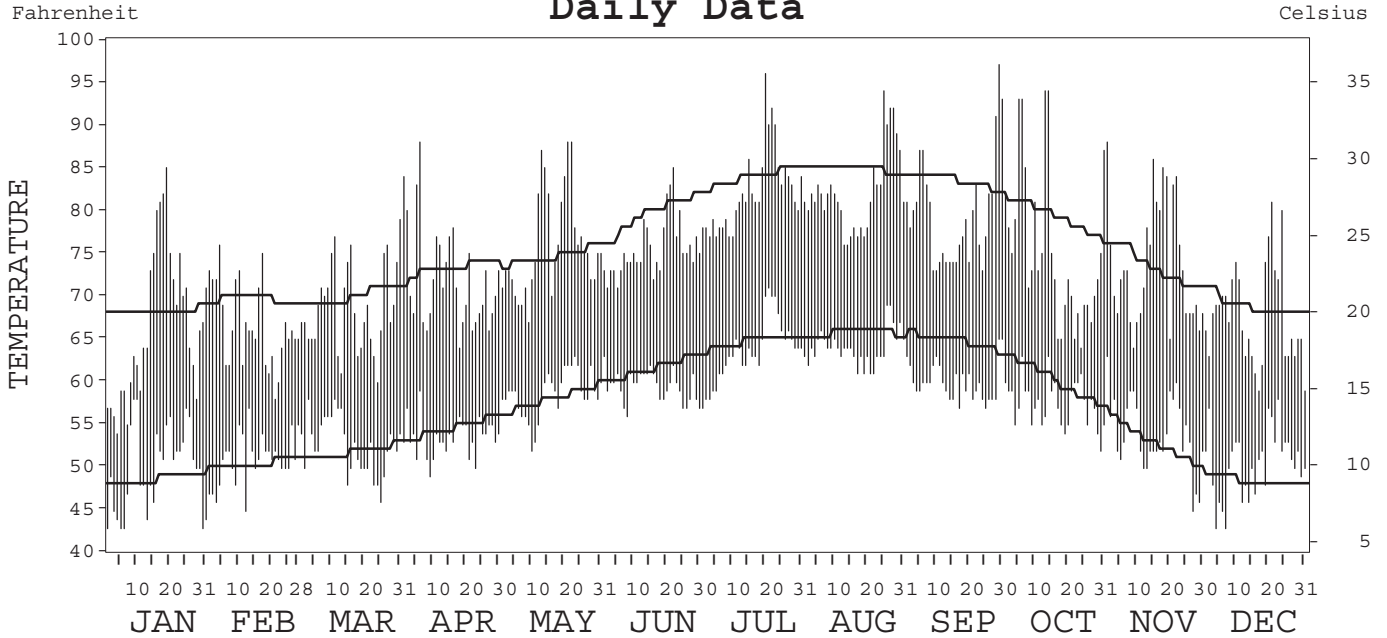
# LOCAL CLIMATOLOGICAL DATA ANNUAL SUMMARY WITH COMPARATIVE DATA



ISSN 0198-0920

LOS ANGELES, CALIFORNIA  
Downtown L.A./USC Campus (CQT)

## Daily Data



I CERTIFY THAT THIS IS AN OFFICIAL PUBLICATION OF THE NATIONAL OCEANIC AND ATMOSPHERIC ADMINISTRATION, AND IS COMPILED FROM RECORDS ON FILE AT THE NATIONAL CLIMATIC DATA CENTER.

*Thomas R. Karl*

NATIONAL OCEANIC AND ATMOSPHERIC ADMINISTRATION

NATIONAL ENVIRONMENTAL SATELLITE, DATA, AND INFORMATION SERVICE

NATIONAL CLIMATIC DATA CENTER ASHEVILLE, NORTH CAROLINA

DIRECTOR NATIONAL CLIMATIC DATA CENTER

# METEOROLOGICAL DATA FOR 2005

## LOS ANGELES, CA (CQT)

LATITUDE: 34° 01' 40" N      LONGITUDE: 118° 17' 45" W      ELEVATION (FT): GRND: 182      BARO: 185      TIME ZONE: PACIFIC (UTC + 8)      WBAN: 93134

	ELEMENT	JAN	FEB	MAR	APR	MAY	JUN	JUL	AUG	SEP	OCT	NOV	DEC	YEAR
TEMPERATURE °F	MEAN DAILY MAXIMUM	66.6	66.6	68.8	72.2	75.9	75.6	82.3	82.3	79.6	75.5	73.8	67.7	73.9
	HIGHEST DAILY MAXIMUM	85	76	79	88	88	85	96	94	97	94	88	81	97
	DATE OF OCCURRENCE	19	04	31	06	22+	22	20	25	29	14+	01	21	SEP 29
	MEAN DAILY MINIMUM	49.9	51.0	52.6	53.6	58.6	59.5	63.7	64.0	60.0	57.5	53.9	50.5	56.2
	LOWEST DAILY MINIMUM	43	45	46	49	52	56	57	61	57	52	45	43	43
	DATE OF OCCURRENCE	30+	12	25	09	10	08	01	22+	25+	30	27	07+	DEC 07+
	AVERAGE DRY BULB	58.3	58.8	60.7	62.9	67.3	67.6	73.0	73.2	69.8	66.5	63.9	59.1	65.1
	MEAN WET BULB	51.2			55.3		59.6	64.3	64.5	60.8			51.1	
	MEAN DEW POINT	44.7			49.5		54.8	60.4	60.4	55.5			43.8	
	NUMBER OF DAYS WITH:													
MAXIMUM ≥ 90°	0	0	0	0	0	0	4	4	3	4	0	0	0	15
MAXIMUM ≤ 32°	0	0	0	0	0	0	0	0	0	0	0	0	0	0
MINIMUM ≤ 32°	0	0	0	0	0	0	0	0	0	0	0	0	0	0
MINIMUM ≤ 0°	0	0	0	0	0	0	0	0	0	0	0	0	0	0
H/C	HEATING DEGREE DAYS	214	169	132	76	13	0	0	0	0	29	71	184	888
	COOLING DEGREE DAYS	12	0	6	22	93	85	254	259	150	82	43	7	1013
RH	MEAN (PERCENT)	67	68	71	68	74	69	71	71	67	69	58	64	68
	HOUR 04 LST	76	76	84	83	88	82	85	84	83	78	68	71	80
	HOUR 10 LST	59	59	61	51	60	58	59	60	54	57	46	55	57
	HOUR 16 LST	56	59	61	52	61	56	59	58	53	56	48	55	56
	HOUR 22 LST	75	74	77	79	82	78	82	82	78	77	70	75	77
S	PERCENT POSSIBLE SUNSHINE													
W/O	NUMBER OF DAYS WITH:													
	HEAVY FOG (VISBY ≤ 1/4 MI)	0	0	0	0	0	0	0	0	0	1	2	0	3
	THUNDERSTORMS	0	0	0	0	0	0	0	0	0	0	0	0	0
CLOUDINESS	SUNRISE-SUNSET: (OKTAS)													
	CEILOMETER (≤ 12,000 FT.)													
	SATELLITE (> 12,000 FT.)													
	MIDNIGHT-MIDNIGHT: (OKTAS)													
	CEILOMETER (≤ 12,000 FT.)													
SATELLITE (> 12,000 FT.)														
NUMBER OF DAYS WITH:														
CLEAR														
PARTLY CLOUDY														
CLOUDY														
PR	MEAN STATION PRESS. (IN.)	29.86			29.79		29.68	29.69	29.70	29.73	29.74		29.90	
	MEAN SEA-LEVEL PRESS. (IN.)				29.98			29.89	29.89	29.92			30.09	
WINDS	RESULTANT SPEED (MPH)	0.2			1.0		0.8	0.4	0.5	0.3	0.3		0.1	
	RES. DIR. (TENS OF DEGS.)	06			26		26	26	26	22	26		02	
	MEAN SPEED (MPH)	2.4	2.9	2.8	3.2		2.9	2.7	2.6	2.1	1.7	1.6	1.3	
	PREVAIL. DIR. (TENS OF DEGS.)	09	09	26	26	36	26	26	26	26	26	27	10	36
	MAXIMUM 2-MINUTE WIND:													
	SPEED (MPH)	16	14	18	18		13	13	13	10	12	18	12	
	DIR. (TENS OF DEGS.)	09	13	26	26		26	26	26	27	27	32	32	
	DATE OF OCCURRENCE	07	22+	22	08		27+	29+	18	26+	15+	26	03	
	MAXIMUM 5-SECOND WIND:													
	SPEED (MPH)	24	23	26	25		20	15	16	17	16	28	18	
DIR. (TENS OF DEGS.)	35	08	33	27		28	27	27	27	26	33	33		
DATE OF OCCURRENCE	29+	21	28	08		03	29+	18+	10	15	26	03		
PRECIPITATION	WATER EQUIVALENT:													
	TOTAL (IN.)	9.32	11.02	2.14	1.05	0.19	T	T	0.00	0.29	1.35	0.22	1.03	26.61
	GREATEST 24-HOUR (IN.)	2.72	2.97	1.08	1.02	0.18	T	T	0.00	0.29	1.19	0.22	0.88	2.97
	DATE OF OCCURRENCE	09-10	20-21	22	28	09	16	20		20	17-18	09-10	31	FEB 20-21
	NUMBER OF DAYS WITH:													
	PRECIPITATION ≥ 0.01	10	10	8	3	2	0	0	0	1	4	2	4	44
PRECIPITATION ≥ 0.10	9	9	4	1	1	0	0	0	1	2	1	1	29	
PRECIPITATION ≥ 1.00	4	5	1	1	0	0	0	0	0	0	0	0	11	
SNOWFALL	SNOW, ICE PELLETS, HAIL:													
	TOTAL (IN.)													
	GREATEST 24-HOUR (IN.)													
	DATE OF OCCURRENCE													
	MAXIMUM SNOW DEPTH (IN.)													
	DATE OF OCCURRENCE													
NUMBER OF DAYS WITH:														
SNOWFALL ≥ 1.0														

# NORMALS, MEANS, AND EXTREMES

LOS ANGELES, CA (CQT)

LATITUDE: 34° 01' 40" N      LONGITUDE: 118° 17' 45" W      ELEVATION (FT): GRND: 182      BARO: 185      TIME ZONE: PACIFIC (UTC + 8)      WBAN: 93134

		POR	JAN	FEB	MAR	APR	MAY	JUN	JUL	AUG	SEP	OCT	NOV	DEC	YEAR
TEMPERATURE °F	NORMAL DAILY MAXIMUM	30	68.1	69.6	69.8	73.1	74.5	79.5	83.8	84.8	83.3	79.0	73.2	68.7	75.6
	MEAN DAILY MAXIMUM	85	66.6	67.7	68.8	71.2	73.5	77.2	82.7	83.5	82.1	77.6	73.0	67.7	74.3
	HIGHEST DAILY MAXIMUM	65	95	95	98	106	102	112	107	105	110	108	100	91	112
	YEAR OF OCCURRENCE		1971	1995	1988	1989	1967	1990	1985	1983	1988	1987	1966	1979	JUN 1990
	MEAN OF EXTREME MAXS.	85	81.0	82.2	84.1	88.0	89.1	89.5	93.0	94.0	96.9	94.3	87.3	81.6	88.4
	NORMAL DAILY MINIMUM	30	48.5	50.3	51.6	54.4	57.9	61.4	64.6	65.6	64.6	59.9	52.6	48.3	56.6
	MEAN DAILY MINIMUM	85	48.4	49.9	51.1	53.7	56.8	59.8	63.3	64.3	63.0	59.0	53.5	49.5	56.0
	LOWEST DAILY MINIMUM	65	28	34	35	39	46	49	54	53	51	41	38	30	28
	YEAR OF OCCURRENCE		1949	1989	1976	1975	1964	1999	1952	1943	1948	1971	1978	1978	JAN 1949
	MEAN OF EXTREME MINS.	85	39.9	42.3	43.8	46.9	51.3	54.7	58.9	59.8	57.2	52.0	44.9	40.9	49.4
	NORMAL DRY BULB	30	58.3	60.0	60.7	63.8	66.2	70.5	74.2	75.2	74.0	69.5	62.9	58.5	66.2
	MEAN DRY BULB	85	57.5	58.7	60.1	62.5	65.2	68.4	73.0	73.9	72.6	68.4	63.2	58.6	65.2
	MEAN WET BULB	5	50.6	50.0	52.9	55.2	58.5	61.6	65.0	65.1	63.0	61.0	53.3	49.2	57.1
	MEAN DEW POINT	5	43.4	42.8	46.8	50.0	54.4	58.0	61.7	61.4	58.4	57.4	46.8	40.7	51.8
	NORMAL NO. DAYS WITH:														
	MAXIMUM ≥ 90°	30	0.1	0.3	0.4	1.2	1.3	2.5	4.3	6.1	6.4	3.4	0.9	*	26.9
	MAXIMUM ≤ 32°	30	0.0	0.0	0.0	0.0	0.0	0.0	0.0	0.0	0.0	0.0	0.0	0.0	0.0
MINIMUM ≤ 32°	30	*	0.0	0.0	0.0	0.0	0.0	0.0	0.0	0.0	0.0	0.0	0.1	0.1	
MINIMUM ≤ 0°	30	0.0	0.0	0.0	0.0	0.0	0.0	0.0	0.0	0.0	0.0	0.0	0.0	0.0	
H/C	NORMAL HEATING DEG. DAYS	30	207	149	144	83	36	5	0	0	1	11	91	201	928
	NORMAL COOLING DEG. DAYS	30	15	23	26	58	84	178	295	325	281	164	44	13	1506
RH	NORMAL (PERCENT)														
	HOUR 04 LST														
	HOUR 10 LST														
	HOUR 16 LST														
	HOUR 22 LST														
S	PERCENT POSSIBLE SUNSHINE	32	69	72	73	70	66	65	82	83	79	73	74	71	73
W/O	MEAN NO. DAYS WITH:														
	HEAVY FOG (VISBY ≤ 1/4 MI)	30	1.5	1.5	1.2	1.2	0.7	0.6	0.5	0.8	1.5	2.5	2.2	1.9	16.1
	THUNDERSTORMS	30	0.5	1.1	0.9	0.8	0.2	0.1	0.2	0.4	0.4	0.3	0.6	0.7	6.2
CLOUDINESS	MEAN:														
	SUNRISE-SUNSET (OKTAS)	34	3.5	3.8	3.8	3.8	3.8	3.4	2.2	2.1	2.4	3.0	3.0	3.4	3.2
	MIDNIGHT-MIDNIGHT (OKTAS)														
	MEAN NO. DAYS WITH:														
CLEAR	34	14.3	12.4	12.9	12.0	11.4	13.6	20.9	22.4	18.4	16.1	16.5	15.0	185.9	
PARTLY CLOUDY	34	8.1	6.9	9.3	9.8	11.8	10.5	8.9	7.4	8.4	9.3	7.4	8.0	105.8	
CLOUDY	34	8.5	9.0	8.7	8.2	7.8	5.9	1.1	1.2	3.3	5.6	6.1	8.0	73.4	
PR	MEAN STATION PRESSURE (IN)	5	29.89	29.88	29.81	29.80	29.74	29.70	29.73	29.72	29.68	29.75	29.86	29.90	29.79
	MEAN SEA-LEVEL PRES. (IN)	4	30.09	30.07	30.00	30.00	29.94	29.89	29.92	29.91	29.88	29.93	30.06	30.10	29.98
WINDS	MEAN SPEED (MPH)	30	5.7	6.1	6.2	6.0	5.8	5.1	4.7	4.6	4.8	4.9	5.4	5.5	5.4
	PREVAIL. DIR (TENS OF DEGS)														
	MAXIMUM 2-MINUTE:														
	SPEED (MPH)	6	21	17	21	18	16	13	13	13	15	15	18	18	21
	DIR. (TENS OF DEGS)		33	34	33	26	26	26	26	26	27	25	32	21	33
	YEAR OF OCCURRENCE		2000	2003	2003	2005	2003	2005	2005	2005	2004	2000	2005	2003	MAR 2003
MAXIMUM 5-SECOND:															
SPEED (MPH)	6	29	29	33	26	25	20	18	18	25	24	28	28	33	
DIR. (TENS OF DEGS)		33	33	33	27	27	28	26	27	26	27	33	17	33	
YEAR OF OCCURRENCE		2000	2004	2003	2003	2000	2005	2001	2003	2004	2000	2005	2003	MAR 2003	
PRECIPITATION	NORMAL (IN)	30	3.33	3.68	3.14	0.83	0.31	0.06	0.01	0.13	0.32	0.37	1.05	1.91	15.14
	MAXIMUM MONTHLY (IN)	65	14.94	13.68	8.37	6.02	3.10	0.98	0.18	2.26	2.82	4.56	9.68	8.77	14.94
	YEAR OF OCCURRENCE		1969	1998	1983	1965	1998	1999	1986	1977	2004	1965	2004	1965	JAN 1969
	MINIMUM MONTHLY (IN)	65	0.00	T	0.00	0.00	0.00	0.00	0.00	0.00	0.00	0.00	0.00	0.00	0.00
	YEAR OF OCCURRENCE		1976	1951	1959	1979	1981	1982	1983	1982	1980	1980	1980	1990	DEC 1990
	MAXIMUM IN 24 HOURS (IN)	65	6.11	4.02	4.26	2.05	2.41	0.76	0.18	2.22	1.95	2.20	4.07	5.88	6.11
	YEAR OF OCCURRENCE		1956	1944	2003	1956	1977	1993	1986	1977	1986	2004	1970	2004	JAN 1956
	NORMAL NO. DAYS WITH:														
	PRECIPITATION ≥ 0.01	30	6.5	6.0	6.4	3.0	1.3	0.6	0.3	0.5	1.2	2.0	3.1	4.3	35.2
PRECIPITATION ≥ 1.00	30	1.1	1.3	0.9	0.2	0.1	0.0	0.0	*	0.1	0.1	0.2	0.5	4.5	
SNOWFALL	NORMAL (IN)	30	0.0	0.0	0.0	0.0	0.0	0.0	0.0	0.0	0.0	0.0	0.0	0.0	0.0
	MAXIMUM MONTHLY (IN)	56	0.3	T	0.0	0.0	0.0	0.0	0.0	0.0	0.0	0.0	0.0	T	0.3
	YEAR OF OCCURRENCE		1949	1951										1947	JAN 1949
	MAXIMUM IN 24 HOURS (IN)	56	0.3	T	0.0	0.0	0.0	0.0	0.0	0.0	0.0	0.0	0.0	T	0.3
	YEAR OF OCCURRENCE		1949	1951										1947	JAN 1949
	MAXIMUM SNOW DEPTH (IN)	56	0	0	0	0	0	0	0	0	0	0	0	0	0
	YEAR OF OCCURRENCE														
NORMAL NO. DAYS WITH:															
SNOWFALL ≥ 1.0	30	0.0	0.0	0.0	0.0	0.0	0.0	0.0	0.0	0.0	0.0	0.0	0.0	0.0	

PRECIPITATION (inches) 2005 LOS ANGELES, CALIFORNIA CA (CQT)

YEAR	JAN	FEB	MAR	APR	MAY	JUN	JUL	AUG	SEP	OCT	NOV	DEC	ANNUAL
1976	0.00	3.71	1.81	0.84	0.05	0.22	0.00	0.08	2.82	0.24	0.49	0.75	11.01
1977	2.84	0.17	1.89	0.00	3.03	0.00	0.00	2.26	0.00	0.00	0.08	4.70	14.97
1978	7.70	8.91	8.02	1.77	0.00	0.00	0.00	0.00	0.39	0.05	2.28	1.45	30.57
1979	6.59	3.06	5.85	0.00	0.00	0.00	0.00	0.01	T	0.77	0.21	0.51	17.00
1980	7.50	12.75	4.79	0.31	0.13	0.00	0.00	0.00	0.00	0.00	0.00	0.85	26.33
1981	2.02	1.48	4.10	0.53	0.00	0.00	0.00	0.00	0.02	0.49	1.80	0.48	10.92
1982	2.17	0.70	3.54	1.39	0.12	0.00	0.00	0.00	0.84	0.19	4.41	1.05	14.41
1983	6.49	4.37	8.37	5.16	0.36	0.01	0.00	0.79	1.99	0.75	2.52	3.23	34.04
1984	0.17	0.00	0.28	0.69	0.00	0.01	0.00	0.40	0.23	0.15	1.44	5.53	8.90
1985	0.71	2.84	1.29	0.00	0.23	0.00	0.00	0.00	0.19	0.42	2.91	0.33	8.92
1986	2.19	6.10	5.27	0.45	0.00	0.00	0.18	0.00	1.97	0.53	0.94	0.37	18.00
1987	1.39	1.22	0.95	0.06	0.00	0.05	0.01	0.00	0.09	2.37	1.13	1.84	9.11
1988	1.65	1.72	0.26	3.41	0.00	0.00	0.00	0.05	0.04	0.00	0.70	3.80	11.63
1989	0.73	1.90	0.81	0.00	0.05	0.00	0.00	0.00	0.35	0.43	0.29	0.00	4.56
1990	1.24	3.12	0.17	0.58	1.17	0.00	0.00	0.02	0.00	0.00	0.19	0.00	6.49
1991	1.69	4.13	5.92	0.03	0.00	0.01	0.13	0.00	0.09	0.37	0.00	3.22	15.59
1992	1.74	7.96	7.12	0.33	0.04	0.00	0.08	0.00	0.00	0.70	0.00	4.68	22.65
1993	11.77	6.61	2.74	0.00	0.02	0.76	0.00	0.00	0.00	0.16	0.66	0.78	23.50
1994	0.33	3.21	1.86	0.83	0.28	0.00	0.00	0.00	0.00	0.19	0.61	1.35	8.66
1995	12.56	1.30	6.98	0.58	0.18	0.60	0.02	0.00	0.00	0.00	0.09	1.34	23.65
1996	3.16	4.94	2.16	0.71	0.04	0.00	0.00	0.00	0.00	1.06	1.59	4.09	17.75
1997	5.58	0.08	0.00	0.00	0.00	0.00	0.00	0.00	0.45	0.00	2.06	2.52	10.69
1998	4.12	13.68	4.06	0.97	3.10	0.05	0.00	0.00	0.01	0.00	1.32	0.54	27.85
1999	1.85	0.56	1.24	2.57	0.02	0.98	T	0.00	T	0.00	0.44	0.40	8.06
2000	0.88	5.54	2.82	1.49	T	0.00	0.00	0.07	0.15	0.98	T	T	11.93
2001	5.59	8.87	1.17	1.11	0.00	T	T	0.00	0.00	0.06	1.42	1.38	19.60
2002	0.80	0.29	0.32	0.09	0.05	0.01	0.00	T	T	0.05	2.43	3.31	7.35
2003	T	4.64	4.32	0.71	1.02	0.01	T	T	0.00	0.53	0.79	1.35	13.37
2004	0.47	4.89	1.17	0.04	0.00	0.00	T	0.00	T	4.56	0.20	8.77	20.10
2005	9.32	11.02	2.14	1.05	0.19	T	T	0.00	0.29	1.35	0.22	1.03	26.61
POR= 128 YRS	3.48	3.32	2.45	1.09	0.26	0.05	0.01	0.10	0.31	0.36	1.66	1.97	15.06

WBAN : 93134

AVERAGE TEMPERATURE (°F) 2005 LOS ANGELES, CALIFORNIA CA (CQT)

YEAR	JAN	FEB	MAR	APR	MAY	JUN	JUL	AUG	SEP	OCT	NOV	DEC	ANNUAL
1976	59.4	56.4	58.4	57.8	64.3	71.1	72.6	71.6	72.6	70.7	66.9	60.4	65.2
1977	58.1	63.1	56.9	63.7	61.9	69.2	74.2	75.6	71.8	69.0	66.3	60.8	65.9
1978	58.1	58.9	63.2	60.8	68.6	71.8	73.4	73.7	76.0	70.3	58.4	53.2	65.5
1979	53.3	55.0	57.9	62.7	65.4	71.5	72.1	72.9	77.4	68.7	64.6	63.2	65.4
1980	60.9	64.6	60.9	64.8	63.2	71.8	77.1	76.3	72.6	71.5	65.3	63.7	67.7
1981	61.8	64.3	62.0	66.0	68.9	77.4	77.2	78.3	75.0	68.5	65.0	62.1	68.9
1982	57.1	64.0	59.3	62.2	64.4	65.3	74.0	75.1	73.9	70.9	61.7	58.1	65.5
1983	61.9	63.0	63.9	63.2	70.7	70.7	75.9	80.8	79.1	74.2	63.5	59.8	68.9
1984	61.2	61.9	65.6	65.3	72.4	72.2	78.7	76.4	81.3	68.5	61.0	57.2	68.5
1985	57.5	60.4	59.3	66.8	66.3	73.5	79.2	75.7	71.8	71.3	60.4	61.7	67.0
1986	65.9	62.4	64.5	66.4	68.1	71.2	73.2	76.0	68.8	69.4	66.4	60.1	67.7
1987	57.2	60.3	61.2	67.8	68.1	69.7	70.8	73.0	75.2	71.9	62.9	54.4	66.0
1988	58.3	62.9	64.9	64.1	67.2	67.9	74.3	72.9	72.2	69.7	61.9	57.1	66.1
1989	56.3	56.4	62.4	67.9	66.2	69.8	75.1	72.8	74.5	69.2	66.7	62.7	66.7
1990	59.4	58.0	61.7	65.7	66.9	74.3	77.3	74.0	76.0	73.2	65.6	57.5	67.5
1991	59.2	63.5	56.8	64.2	63.9	67.1	71.0	73.1	73.6	72.1	66.2	59.6	65.9
1992	60.3	62.3	60.8	69.6	69.0	70.4	75.9	78.9	76.6	70.4	65.1	56.5	68.0
1993	57.3	58.3	64.5	67.0	68.9	72.4	73.0	74.4	74.3	71.2	64.6	60.8	67.2
1994	62.2	59.3	64.7	64.3	65.1	74.4	73.6	80.5	76.5	70.4	59.9	59.9	67.6
1995	58.4	65.3	62.6	64.8	64.0	69.0	75.8	77.5	77.0	71.5	67.1	60.9	67.8
1996	60.9	61.3	63.0	68.8	69.0	71.9	75.1	77.2	73.5	67.0	64.3	59.7	67.6
1997	58.7	61.0	65.1	65.7	72.7	71.0	73.2	77.6	79.8	71.1	65.2	58.9	68.3
1998	58.8	57.1	61.9	62.2	64.2	68.8	76.2	79.9	73.6	69.0	62.4	59.1	66.1
1999	60.8	59.9	56.9	59.4	63.3	66.8	71.8	71.4	69.2	71.5	61.8	58.1	64.2
2000	58.5	57.6	59.5	64.1	67.7	71.2	72.3	74.7	72.7	65.1	59.0	58.9	65.1
2001	54.4	54.7	60.4	59.9	67.3	70.8	71.0	72.0	71.4	68.2	62.0	56.4	64.0
2002	56.8	60.7	59.8	61.3	64.5	68.7	72.3	71.4	72.2	64.7	64.4	56.6	64.5
2003	63.4	58.9	61.9	60.7	64.4	67.1	75.5	75.6	71.5	70.3	59.8	56.5	65.5
2004	57.2	56.3	64.8	65.6	69.8	69.3	73.0	72.5	74.6	65.1	59.1	57.8	65.4
2005	58.3	58.8	60.7	62.9	67.3	67.6	73.0	73.2	69.8	66.5	63.9	59.1	65.1
POR= 128 YRS	56.5	57.6	59.1	61.4	64.1	67.7	72.0	72.8	71.4	67.2	62.4	57.8	64.2

HEATING DEGREE DAYS (base 65°F) 2005 LOS ANGELES, CALIFORNIA CA (CQT)

YEAR	JUL	AUG	SEP	OCT	NOV	DEC	JAN	FEB	MAR	APR	MAY	JUN	TOTAL
1976-77	0	0	0	0	62	138	215	86	247	57	108	1	914
1977-78	0	0	0	14	51	132	209	174	102	122	24	0	828
1978-79	0	0	0	7	209	361	354	274	226	80	46	6	1563
1979-80	0	0	0	1	59	114	128	60	123	79	75	4	643
1980-81	0	0	0	2	41	85	103	91	97	43	1	0	463
1981-82	0	0	0	11	58	102	238	58	184	113	41	16	821
1982-83	0	0	0	3	117	205	134	73	68	68	2	0	670
1983-84	0	0	0	0	99	158	140	99	29	59	5	0	589
1984-85	0	0	0	4	129	239	225	162	179	40	21	0	999
1985-86	0	0	0	0	163	131	42	125	92	32	7	0	592
1986-87	0	0	8	2	14	151	241	140	131	31	19	0	737
1987-88	0	0	0	3	91	323	216	82	81	88	30	11	925
1988-89	0	0	1	2	98	258	270	271	104	36	27	5	1072
1989-90	0	0	0	2	27	102	173	206	130	26	16	2	684
1990-91	0	0	0	0	42	244	183	63	248	74	72	2	928
1991-92	0	0	0	23	46	168	159	114	125	1	0	0	636
1992-93	0	0	0	1	49	256	235	181	68	9	0	6	805
1993-94	0	0	0	0	45	136	106	153	61	60	35	0	596
1994-95	0	0	0	0	158	160	211	62	91	59	52	14	807
1995-96	0	0	0	1	6	132	146	125	83	16	3	1	513
1996-97	0	0	0	31	76	158	196	120	61	49	0	0	691
1997-98	0	0	0	0	71	193	185	216	118	130	36	3	952
1998-99	0	0	0	1	79	200	137	144	245	211	66	32	1115
1999-00	0	0	2	1	95	207	197	211	166	61	9	0	949
2000-01	0	0	0	36	179	186	321	293	147	164	5	0	1331
2001-02	0	0	0	3	97	260	246	139	156	108	50	1	1060
2002-03	0	0	0	47	51	254	86	169	117	137	57	5	923
2003-04	0	0	0	7	156	256	237	247	54	45	0	0	1002
2004-05	0	0	0	43	168	236	214	169	132	76	13	0	1051
2005-	0	0	0	29	71	184							

WBAN : 93134

COOLING DEGREE DAYS (base 65°F) 2005 LOS ANGELES, CALIFORNIA CA (CQT)

YEAR	JAN	FEB	MAR	APR	MAY	JUN	JUL	AUG	SEP	OCT	NOV	DEC	ANNUAL
1976	22	3	20	10	32	203	245	212	233	185	123	2	1290
1977	7	39	3	23	18	135	293	334	210	148	96	8	1314
1978	0	8	52	2	145	212	269	277	338	177	17	0	1497
1979	0	0	14	17	67	209	229	252	379	124	53	62	1406
1980	10	54	3	82	26	215	380	357	233	210	56	53	1679
1981	12	75	13	81	132	380	387	422	306	124	67	17	2016
1982	0	36	15	36	33	32	286	322	275	194	25	0	1254
1983	44	23	41	21	185	174	342	495	432	292	60	4	2113
1984	29	14	56	73	240	222	433	360	496	123	13	6	2065
1985	0	41	10	100	68	264	447	339	210	203	31	35	1748
1986	77	56	83	80	110	194	261	349	132	145	65	6	1558
1987	6	18	21	120	121	147	186	257	312	221	36	1	1446
1988	13	30	84	68	107	107	297	252	223	154	14	20	1369
1989	8	37	31	131	73	154	318	251	290	139	85	41	1558
1990	10	16	36	54	81	291	388	287	336	262	68	20	1849
1991	8	28	0	54	43	72	191	260	265	250	88	6	1265
1992	17	44	1	146	132	168	347	435	353	175	59	0	1877
1993	6	0	59	77	129	232	254	299	287	199	38	12	1592
1994	25	0	59	47	47	288	272	488	354	178	9	10	1777
1995	13	76	24	61	31	142	341	394	369	212	77	12	1752
1996	25	26	28	134	134	215	320	386	266	101	60	0	1695
1997	7	14	72	79	245	188	260	402	450	196	85	11	2009
1998	0	0	29	53	18	125	356	468	266	132	11	24	1482
1999	14	8	0	49	23	90	217	202	136	208	7	0	954
2000	5	2	4	39	98	192	233	308	239	45	2	3	1170
2001	1	13	9	18	85	180	191	226	200	110	14	3	1050
2002	0	24	1	4	41	121	230	204	222	46	40	0	933
2003	43	2	28	13	48	76	333	336	200	180	5	1	1265
2004	1	0	56	70	154	136	256	238	294	55	0	16	1276
2005	12	0	6	22	93	85	254	259	150	82	43	7	1013

SNOWFALL (inches) 2005 LOS ANGELES, CALIFORNIA CA (CQT)

YEAR	JUL	AUG	SEP	OCT	NOV	DEC	JAN	FEB	MAR	APR	MAY	JUN	TOTAL
1970-71	0.0	0.0	0.0	0.0	0.0	0.0	0.0	0.0	0.0	0.0	0.0	0.0	0.0
1971-72	0.0	0.0	0.0	0.0	0.0	0.0	0.0	0.0	0.0	0.0	0.0	0.0	0.0
1972-73	0.0	0.0	0.0	0.0	0.0	0.0	0.0	0.0	0.0	0.0	0.0	0.0	0.0
1973-74	0.0	0.0	0.0	0.0	0.0	0.0	0.0	0.0	0.0	0.0	0.0	0.0	0.0
1974-75	0.0	0.0	0.0	0.0	0.0	0.0	0.0	0.0	0.0	0.0	0.0	0.0	0.0
1975-76	0.0	0.0	0.0	0.0	0.0	0.0	0.0	0.0	0.0	0.0	0.0	0.0	0.0
1976-77	0.0	0.0	0.0	0.0	0.0	0.0	0.0	0.0	0.0	0.0	0.0	0.0	0.0
1977-78	0.0	0.0	0.0	0.0	0.0	0.0	0.0	0.0	0.0	0.0	0.0	0.0	0.0
1978-79	0.0	0.0	0.0	0.0	0.0	0.0	0.0	0.0	0.0	0.0	0.0	0.0	0.0
1979-80	0.0	0.0	0.0	0.0	0.0	0.0	0.0	0.0	0.0	0.0	0.0	0.0	0.0
1980-81	0.0	0.0	0.0	0.0	0.0	0.0	0.0	0.0	0.0	0.0	0.0	0.0	0.0
1981-82	0.0	0.0	0.0	0.0	0.0	0.0	0.0	0.0	0.0	0.0	0.0	0.0	0.0
1982-83	0.0	0.0	0.0	0.0	0.0	0.0	0.0	0.0	0.0	0.0	0.0	0.0	0.0
1983-84	0.0	0.0	0.0	0.0	0.0	0.0	0.0	0.0	0.0	0.0	0.0	0.0	0.0
1984-85													
1996-97													
1997-98													
1998-99													
1999-00													
2000-01													
2001-02													
2002-03													
2003-04													
2004-05													
2005-													
POR= 43 YRS	0.0	0.0	0.0	0.0	0.0	T	0.0	T	0.0	0.0	0.0	0.0	T

WBAN : 93134

REFERENCE NOTES :

<p>PAGE 1: THE TEMPERATURE GRAPH SHOWS NORMAL MAXIMUM AND NORMAL MINIMUM DAILY TEMPERATURES (SOLID CURVES) AND THE ACTUAL DAILY HIGH AND LOW TEMPERATURES (VERTICAL BARS).</p> <p>PAGE 2 AND 3: H/C INDICATES HEATING AND COOLING DEGREE DAYS. RH INDICATES RELATIVE HUMIDITY W/O INDICATES WEATHER AND OBSTRUCTIONS S INDICATES SUNSHINE. PR INDICATES PRESSURE. CLOUDINESS ON PAGE 3 IS THE SUM OF THE CEILOMETER AND SATELLITE DATA NOT TO EXCEED EIGHT EIGHTHS(OKTAS).</p> <p>GENERAL: T INDICATES TRACE PRECIPITATION, AN AMOUNT GREATER THAN ZERO BUT LESS THAN THE LOWEST REPORTABLE VALUE. + INDICATES THE VALUE ALSO OCCURS ON EARLIER DATES. BLANK ENTRIES DENOTE MISSING OR UNREPORTED DATA. NORMALS ARE 30-YEAR AVERAGES (1971 - 2000). ASOS INDICATES AUTOMATED SURFACE OBSERVING SYSTEM. PM INDICATES THE LAST DAY OF THE PREVIOUS MONTH. POR (PERIOD OF RECORD) BEGINS WITH THE JANUARY DATA MONTH AND IS THE NUMBER OF YEARS USED TO COMPUTE THE MEAN. INDIVIDUAL MONTHS WITHIN THE POR MAY BE MISSING. WHEN THE POR FOR A NORMAL IS LESS THAN 30 YEARS, THE NORMAL IS PROVISIONAL AND IS BASED ON THE NUMBER OF YEARS INDICATED. 0.* OR * INDICATES THE VALUE OR MEAN-DAYS-WITH IS BETWEEN 0.00 AND 0.05. CLOUDINESS FOR ASOS STATIONS DIFFERS FROM THE NON-ASOS OBSERVATION TAKEN BY A HUMAN OBSERVER. ASOS STATION CLOUDINESS IS BASED ON TIME-AVERAGED CEILOMETER DATA FOR CLOUDS AT OR BELOW 12,000 FEET AND ON SATELLITE DATA FOR CLOUDS ABOVE 12,000 FEET. THE NUMBER OF DAYS WITH CLEAR, PARTLY CLOUDY, AND CLOUDY CONDITIONS FOR ASOS STATIONS IS THE SUM OF THE CEILOMETER AND SATELLITE DATA FOR THE SUNRISE TO SUNSET PERIOD.</p>	<p>GENERAL CONTINUED: CLEAR INDICATES 0 - 2 OKTAS, PARTLY CLOUDY INDICATES 3 - 6 OKTAS, AND CLOUDY INDICATES 7 OR 8 OKTAS. WHEN AT LEAST ONE OF THE ELEMENTS (CEILOMETER OR SATELLITE) IS MISSING, THE DAILY CLOUDINESS IS NOT COMPUTED. WIND DIRECTION IS RECORDED IN TENS OF DEGREES (2 DIGITS) CLOCKWISE FROM TRUE NORTH. "00" INDICATES CALM. "36" INDICATES TRUE NORTH. RESULTANT WIND IS THE VECTOR AVERAGE OF THE SPEED AND DIRECTION. AVERAGE TEMPERATURE IS THE SUM OF THE MEAN DAILY MAXIMUM AND MINIMUM TEMPERATURE DIVIDED BY 2. SNOWFALL DATA COMPRISE ALL FORMS OF FROZEN PRECIPITATION, INCLUDING HAIL. A HEATING (COOLING) DEGREE DAY IS THE DIFFERENCE BETWEEN THE AVERAGE DAILY TEMPERATURE AND 65° F. DRY BULB IS THE TEMPERATURE OF THE AMBIENT AIR. DEW POINT IS THE TEMPERATURE TO WHICH THE AIR MUST BE COOLED TO ACHIEVE 100 PERCENT RELATIVE HUMIDITY. WET BULB IS THE TEMPERATURE THE AIR WOULD HAVE IF THE MOISTURE CONTENT WAS INCREASED TO 100 PERCENT RELATIVE HUMIDITY.</p> <p>ON JULY 1, 1996, THE NATIONAL WEATHER SERVICE BEGAN USING THE "METAR" OBSERVATION CODE THAT WAS ALREADY EMPLOYED BY MOST OTHER NATIONS OF THE WORLD. THE MOST NOTICEABLE DIFFERENCE IN THIS ANNUAL PUBLICATION WILL BE THE CHANGE IN UNITS FROM TENTHS TO EIGHTS(OKTAS) FOR REPORTING THE AMOUNT OF SKY COVER.</p>
---	--

2005  
LOS ANGELES, CALIFORNIA  
Downtown L.A./USC Campus (CQT)

The climate of Los Angeles is normally pleasant and mild through the year. The Pacific Ocean is the primary moderating influence. The coastal mountain ranges lying along the north and east sides of the Los Angeles coastal basin act as a buffer against extremes of summer heat and winter cold occurring in desert and plateau regions in the interior. A variable balance between mild sea breezes, and either hot or cold winds from the interior, results in some variety in weather conditions, but temperature and humidity are usually well within the limits of human comfort. An important, and somewhat unusual, aspect of the climate of the Los Angeles metropolitan area is the pronounced difference in temperature, humidity, cloudiness, fog, rain, and sunshine over fairly short distances.

These differences are closely related to the distance from, and elevation above, the Pacific Ocean. Both high and low temperatures become more extreme and the average relative humidity becomes lower as one goes inland and up foothill slopes. Relative humidity is frequently high near the coast, but may be quite low along the foothills. During periods of high temperatures, the relative humidity is usually below normal so that discomfort is rare, except for infrequent periods when high temperatures and high humidities occur together.

Like other Pacific Coast areas, most rainfall comes during the winter with nearly 85 percent of the annual total occurring from November through March, while summers are practically rainless. As in many semi-arid regions, there is a marked variability in monthly and seasonal totals. Precipitation generally increases with distance from the ocean, from a yearly total of around 12 inches in coastal sections to the south of the city to over 20 inches in foothill areas. Destructive flash floods occasionally develop in and below some mountain canyons. Snow is often visible on nearby mountains in the winter, but is extremely rare in the coastal basin. Thunderstorms are infrequent.

Prevailing winds are from the west during the spring, summer, and early autumn, with northeasterly wind predominating the remainder of the year. At times, the lack of air movement, combined with a frequent and persistent temperature inversion, is associated with concentrations of air pollution in the Los Angeles coastal basin and some adjacent areas. In fall, winter, and early spring months, occasional foehn-like descending Santa Ana winds come from the northeast over ridges and through passes in the coastal mountains. These Santa Ana winds may pick up considerable amounts of dust and reach speeds of 35 to 50 mph in north and east sections of the city, with higher speeds in outlying areas to the north and east, but rarely reach coastal portions of the city.

Sunshine, fog, and clouds depend a great deal on topography and distance from the ocean. Low clouds are common at night and in the morning along the coast during spring and summer, but form later and clear earlier near the foothills so that annual cloudiness and fog frequencies are greatest near the ocean, and sunshine totals are highest on the inland side of the city. The sun shines about 75 percent of daytime hours at the Civic Center. Light fog may accompany the usual night and morning low clouds, but dense fog is more likely to occur during the night and early morning hours of the winter months.

# STATION LOCATION

LOS ANGELES, CALIFORNIA  
Downtown L.A./USC Campus

LOCATION	Occupied From	Occupied To	Airline Distances and Directions from previous Location	LATITUDE NORTH	LONGITUDE WEST	ELEVATION ABOVE										AUTOMATIC OBSERVING EQUIPMENT *	* TYPE  M = AMOS T = AUTOB S = ASOS W = AWOS  REMARKS
						GROUND											
						SEA LEVEL	GROUND	WIND INSTRUMENT	EXTREME THERMOMETERS	PSYCHROMETER	SUNSHINE SWITCH	TIPPING BUCKET	RAIN GAUGE	WINDHOLE RAIN GAUGE	8 INCH RAIN GAUGE		
Downtown L.A. USC Campus	06/24/99	Present		34° 02'	118° 18'	a182									S	ASOS Commissioned 06/24/99 a. Ground Elevation	

**For Hard Copy Subscription:**

Price and ordering information: NCDC Subscribing Service Center, 310 State Route 956, Building 300, Rocket Center, WV 26726.

**INQUIRIES/COMMENTS CALL: Toll Free (866) 742-3322**

Visit our Web Site for other weather data: [www.ncdc.noaa.gov](http://www.ncdc.noaa.gov)

**Non-Subscription Request:**

NCDC Customer Services;

Phone: 828-271-4800

Fax: 828-271-4876

Email: [ncdc.orders@noaa.gov](mailto:ncdc.orders@noaa.gov)

OFFICIAL BUSINESS

PENALTY FOR PRIVATE USE \$300

CHANGE SERVICE REQUESTED

**FIRST CLASS**  
**POSTAGE & FEES PAID**  
United States Department of Commerce  
NOAA Permit No. G - 19