

2005

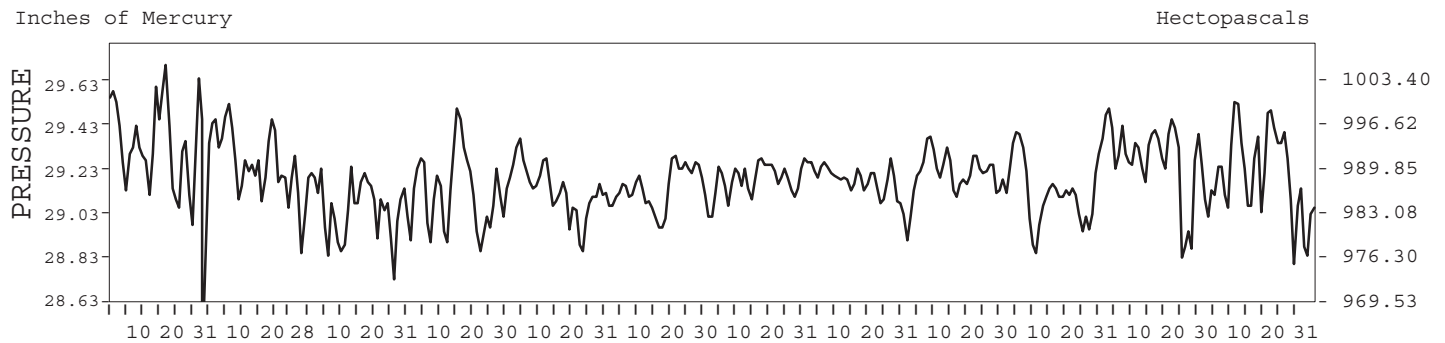
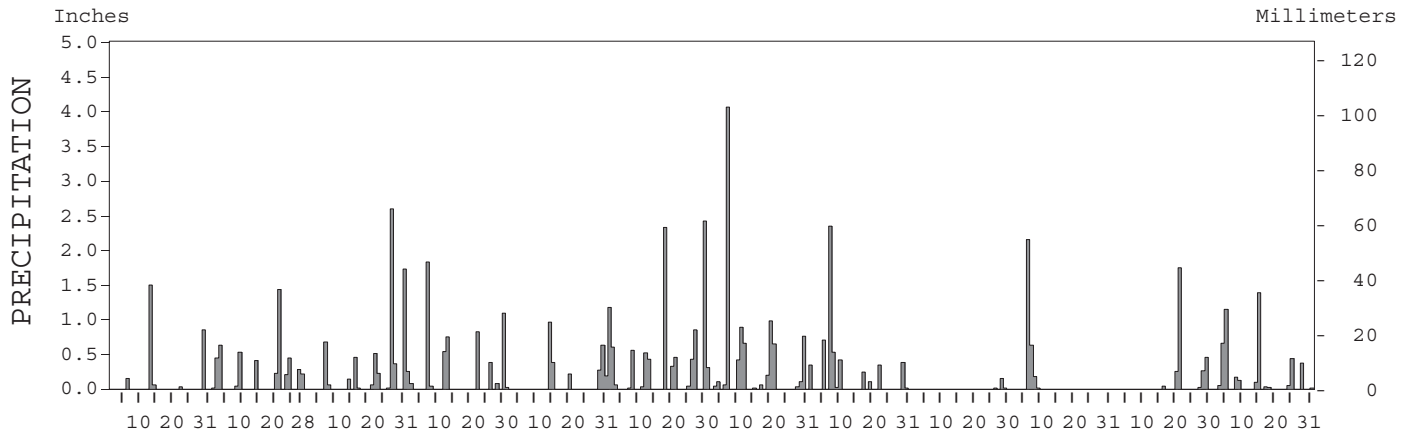
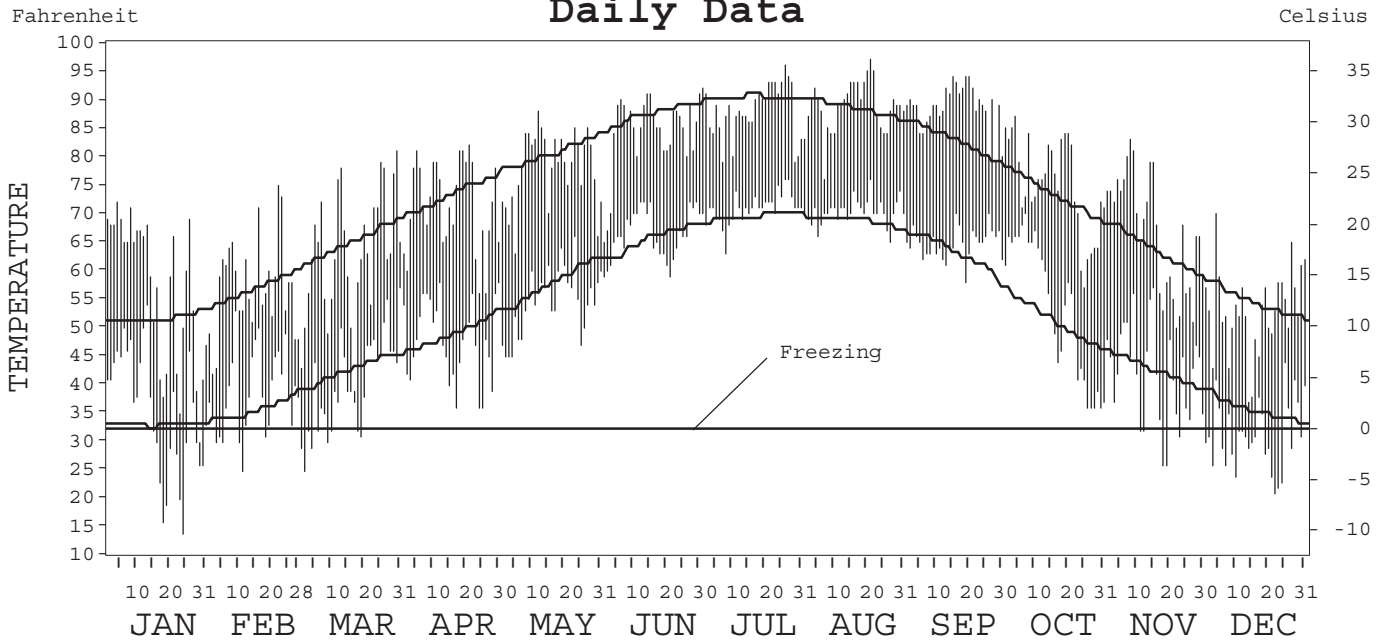
LOCAL CLIMATOLOGICAL DATA ANNUAL SUMMARY WITH COMPARATIVE DATA



ISSN 0198-1544

ATHENS, GEORGIA (AHN)

Daily Data



I CERTIFY THAT THIS IS AN OFFICIAL PUBLICATION OF THE NATIONAL OCEANIC AND ATMOSPHERIC ADMINISTRATION, AND IS COMPILED FROM RECORDS ON FILE AT THE NATIONAL CLIMATIC DATA CENTER.

NATIONAL OCEANIC AND ATMOSPHERIC ADMINISTRATION
 NATIONAL ENVIRONMENTAL AND INFORMATION SERVICE
 NATIONAL CLIMATIC DATA CENTER
 ASHEVILLE, NORTH CAROLINA
 DIRECTOR NATIONAL CLIMATIC DATA CENTER

METEOROLOGICAL DATA FOR 2005

ATHENS, GA (AHN)

LATITUDE: 33° 56' 54" N LONGITUDE: 83° 19' 36" W ELEVATION (FT): GRND: 800 BARO: 803 TIME ZONE: EASTERN (UTC + 5) WBAN: 13873

	ELEMENT	JAN	FEB	MAR	APR	MAY	JUN	JUL	AUG	SEP	OCT	NOV	DEC	YEAR	
TEMPERATURE °F	MEAN DAILY MAXIMUM	56.7	57.2	63.2	71.5	78.1	84.2	88.1	88.7	88.6	74.9	66.6	53.0	72.6	
	HIGHEST DAILY MAXIMUM	72	75	81	82	88	91	96	97	94	87	83	70	97	
	DATE OF OCCURRENCE	04	22	30	21	12	30+	26	21	20+	04	08	04	AUG 21	
	MEAN DAILY MINIMUM	35.5	38.5	40.1	47.8	54.5	66.3	70.9	70.3	64.8	53.4	41.9	31.3	51.3	
	LOWEST DAILY MINIMUM	14	25	25	36	45	59	63	65	58	36	26	21	14	
	DATE OF OCCURRENCE	24	11	02	25+	04+	01+	08	27	19	30+	19+	22	JAN 24	
	AVERAGE DRY BULB	46.1	47.9	51.7	59.7	66.3	75.3	79.5	79.5	76.7	64.2	54.3	42.2	62.0	
	MEAN WET BULB		42.5	44.6	52.2	58.9	68.8	73.4	72.8		57.5	47.7	37.2		
	MEAN DEW POINT		35.9	36.6	44.6	53.3	65.9	71.3	70.3		53.0	39.9	30.2		
	NUMBER OF DAYS WITH:														
	MAXIMUM ≥ 90°	0	0	0	0	0	4	14	14	12	0	0	0	0	44
	MAXIMUM ≤ 32°	1	0	0	0	0	0	0	0	0	0	0	0	0	1
	MINIMUM ≤ 32°	13	6	9	0	0	0	0	0	0	0	5	21	54	
MINIMUM ≤ 0°	0	0	0	0	0	0	0	0	0	0	0	0	0		
H/C	HEATING DEGREE DAYS	578	473	407	162	45	4	0	0	0	131	325	702	2827	
	COOLING DEGREE DAYS	0	0	0	10	94	319	456	460	359	112	10	0	1820	
RH	MEAN (PERCENT)	67	69	62	62	66	78	81	78	65	72	63	66	69	
	HOUR 01 LST	72	75	71	71	79	90	91	90	81	83	73	76	79	
	HOUR 07 LST	79	80	80	80	84	90	91	92	85	89	81	82	84	
	HOUR 13 LST	56	58	49	47	51	62	65	61	45	54	45	50	54	
	HOUR 19 LST	62	64	51	51	55	71	77	75	58	69	59	60	63	
S	PERCENT POSSIBLE SUNSHINE														
W/O	NUMBER OF DAYS WITH:														
	HEAVY FOG (VISBY ≤ 1/4 MI)	10	8	4	2	4	6	4	6	2	1	3	1	51	
	THUNDERSTORMS	1	2	7	6	4	8	12	11	0	0	2	2	53	
CLOUDINESS	SUNRISE-SUNSET: (OKTAS)														
	CEILOMETER (≤ 12,000 FT.)														
	SATELLITE (> 12,000 FT.)														
	MIDNIGHT-MIDNIGHT: (OKTAS)														
	CEILOMETER (≤ 12,000 FT.)														
SATELLITE (> 12,000 FT.)															
NUMBER OF DAYS WITH:															
CLEAR															
PARTLY CLOUDY															
CLOUDY															
PR	MEAN STATION PRESS. (IN.)		29.27	29.06	29.12	29.14	29.15	29.19	29.17	29.23	29.17	29.25	29.22		
	MEAN SEA-LEVEL PRESS. (IN.)		30.14	29.92	29.98	29.99	29.99	30.03			30.02		30.09		
WINDS	RESULTANT SPEED (MPH)		1.1	3.4	3.4	1.2	0.5	0.9	1.2	0.6	1.3	1.9			
	RES. DIR. (TENS OF DEGS.)		16	21	21	21	11	19	09	08	11	20			
	MEAN SPEED (MPH)	6.6	6.4	8.1	7.0	5.4	5.5	4.4	4.2	5.3	5.3	5.2	5.9	5.8	
	PREVAIL. DIR. (TENS OF DEGS.)	09	09	24	25	27	09	10	09	08	09	10	24	09	
	MAXIMUM 2-MINUTE WIND:														
	SPEED (MPH)	28	25	33	35	26	24	29	30	21	29	28	23	35	
	DIR. (TENS OF DEGS.)	28	09	25	26	25	24	30	10	33	08	27	24	26	
	DATE OF OCCURRENCE	22	27	11+	02	20	30+	01	05	16+	06	22	26+	APR 02	
	MAXIMUM 5-SECOND WIND:														
	SPEED (MPH)	37	35	48	49	33	32	36	40	55	36	35	29	55	
DIR. (TENS OF DEGS.)	27	26	25	25	26	25	30	06	01	09	26	21	01		
DATE OF OCCURRENCE	22	10	08	02	20+	30	01	22	09	06	22	26+	SEP 09		
PRECIPITATION	WATER EQUIVALENT:														
	TOTAL (IN.)	2.59	4.89	6.85	5.87	2.67	10.25	9.35	5.47	0.17	2.97	2.78	4.56	58.42	
	GREATEST 24-HOUR (IN.)	1.56	1.57	2.92	1.84	1.27	2.42	4.12	2.43	0.15	2.15	1.84	1.63	4.12	
	DATE OF OCCURRENCE	13-14	20-21	27-28	07-08	14-15	30	06-07	07-08	28	06	20-21	04-05	JUL 06-07	
	NUMBER OF DAYS WITH:														
	PRECIPITATION ≥ 0.01	5	12	12	10	7	15	16	11	3	4	6	13	114	
PRECIPITATION ≥ 0.10	3	10	8	7	6	11	11	9	1	3	4	8	81		
PRECIPITATION ≥ 1.00	1	1	2	2	0	3	1	1	0	1	1	2	15		
SNOWFALL	SNOW, ICE PELLETS, HAIL:														
	TOTAL (IN.)														
	GREATEST 24-HOUR (IN.)														
	DATE OF OCCURRENCE														
	MAXIMUM SNOW DEPTH (IN.)														
	DATE OF OCCURRENCE														
NUMBER OF DAYS WITH:															
SNOWFALL ≥ 1.0															

NORMALS, MEANS, AND EXTREMES

ATHENS, GA (AHN)

LATITUDE: 33° 56' 54" N LONGITUDE: 83° 19' 36" W ELEVATION (FT): GRND: 800 BARO: 803 TIME ZONE: EASTERN (UTC + 5) WBAN: 13873

ELEMENT		POR	JAN	FEB	MAR	APR	MAY	JUN	JUL	AUG	SEP	OCT	NOV	DEC	YEAR
TEMPERATURE °F	NORMAL DAILY MAXIMUM	30	51.4	56.5	64.7	73.0	80.5	87.2	90.2	88.2	82.5	72.9	63.2	54.2	72.0
	MEAN DAILY MAXIMUM	51	52.1	56.5	64.6	73.5	80.8	86.9	90.0	88.6	82.9	73.7	64.1	55.0	72.4
	HIGHEST DAILY MAXIMUM	62	80	81	88	93	97	104	104	107	99	98	86	79	107
	YEAR OF OCCURRENCE		1975	1996	1974	1986	1962	1954	1977	1983	1957	1954	1961	1984	AUG 1983
	MEAN OF EXTREME MAXS.	51	69.8	73.5	80.5	86.5	90.6	95.7	97.3	96.0	92.7	85.4	78.4	71.7	84.8
	NORMAL DAILY MINIMUM	30	32.9	35.4	42.3	48.7	57.6	65.3	69.3	68.5	62.7	50.7	42.2	35.3	50.9
	MEAN DAILY MINIMUM	51	32.6	35.5	41.9	49.6	58.3	65.8	69.5	68.5	62.8	51.1	42.1	34.8	51.0
	LOWEST DAILY MINIMUM	62	-4	5	11	26	37	45	55	54	36	24	7	2	-4
	YEAR OF OCCURRENCE		1985	1958	1980	1992	1989	1972	1967	1968	1967	1952	1950	1962	JAN 1985
	MEAN OF EXTREME MINS.	51	14.5	19.2	25.7	34.4	44.0	55.5	63.2	61.5	50.0	35.5	26.5	18.5	37.4
	NORMAL DRY BULB	30	42.2	46.0	53.5	60.9	69.1	76.3	79.8	78.4	72.6	61.8	52.7	44.8	61.5
	MEAN DRY BULB	51	42.4	46.1	53.2	61.6	69.7	76.5	79.8	78.7	73.0	62.4	53.1	44.8	61.8
	MEAN WET BULB	20	38.5	42.1	47.4	53.6	62.4	69.1	72.3	71.7	66.1	56.8	48.6	40.1	55.7
	MEAN DEW POINT	20	31.1	34.7	39.8	46.4	57.5	65.3	69.0	68.7	62.4	52.1	42.5	33.7	50.3
	NORMAL NO. DAYS WITH:														
	MAXIMUM ≥ 90°	30	0.0	0.0	0.0	0.2	2.0	11.0	18.3	13.7	5.2	0.2	0.0	0.0	50.6
MAXIMUM ≤ 32°	30	0.8	0.3	*	0.0	0.0	0.0	0.0	0.0	0.0	0.0	0.0	0.2	1.3	
MINIMUM ≤ 32°	30	14.9	10.6	4.2	0.4	0.0	0.0	0.0	0.0	0.0	0.4	5.1	12.3	47.9	
MINIMUM ≤ 0°	30	0.1	0.0	0.0	0.0	0.0	0.0	0.0	0.0	0.0	0.0	0.0	0.0	0.1	
H/C	NORMAL HEATING DEG. DAYS	30	691	522	350	153	28	1	0	0	10	136	360	610	2861
	NORMAL COOLING DEG. DAYS	30	0	1	8	46	164	351	471	430	254	53	7	0	1785
RH	NORMAL (PERCENT)	30	68	65	64	63	69	72	74	76	75	73	71	70	70
	HOUR 01 LST	30	75	71	70	71	81	84	86	88	87	83	78	76	79
	HOUR 07 LST	30	81	80	81	82	87	88	90	92	92	90	85	82	86
	HOUR 13 LST	30	58	53	53	48	54	56	58	59	59	54	55	58	55
	HOUR 19 LST	30	64	57	55	52	60	62	65	69	71	68	66	65	63
S	PERCENT POSSIBLE SUNSHINE	58	49	54	58	66	68	67	63	75	64	63	58	50	61
W/O	MEAN NO. DAYS WITH:														
	HEAVY FOG (VISBY ≤ 1/4 MI) THUNDERSTORMS	51 63	4.8 1.1	3.8 1.3	3.4 3.2	2.3 3.8	2.3 5.9	1.9 8.5	2.6 10.9	3.2 7.9	3.1 3.1	2.9 1.0	3.7 1.1	4.3 0.6	38.3 48.4
CLOUDINESS	MEAN:														
	SUNRISE-SUNSET (OKTAS)	48	5.0	4.8	4.8	4.3	4.6	4.6	4.6	4.4	4.3	3.7	4.1	4.7	4.5
	MIDNIGHT-MIDNIGHT (OKTAS)	32	4.6	4.3	4.3	3.8	4.2	4.2	4.4	4.2	4.0	3.5	3.8	4.3	4.1
	MEAN NO. DAYS WITH:														
	CLEAR	54	8.7	8.6	9.2	10.3	8.7	8.1	6.6	8.0	9.5	13.3	11.5	9.4	111.9
PARTLY CLOUDY	54	6.9	6.3	7.4	8.4	10.5	11.8	12.8	12.5	9.1	7.1	5.9	6.0	104.7	
CLOUDY	54	15.4	13.3	14.5	11.3	11.8	10.2	11.1	10.1	10.9	10.1	12.1	15.0	145.7	
PR	MEAN STATION PRESSURE (IN)	32	29.20	29.20	29.20	29.20	29.10	29.20	29.20	29.20	29.20	29.20	29.29	29.29	29.21
	MEAN SEA-LEVEL PRES. (IN)	18	30.12	30.09	30.03	30.00	30.00	30.00	30.03	30.02	30.05	30.10	30.12	30.16	30.06
WINDS	MEAN SPEED (MPH)	50	8.3	8.6	8.7	8.3	7.0	6.5	6.4	5.9	6.6	6.7	7.4	8.1	7.4
	PREVAIL. DIR (TENS OF DEGS)	26	27	27	27	25	24	24	24	09	08	08	27	25	27
	MAXIMUM 2-MINUTE:														
	SPEED (MPH)	9	31	37	38	35	31	39	32	36	35	29	33	48	48
	DIR. (TENS OF DEGS)		29	26	28	26	27	28	30	31	12	08	25	10	10
	YEAR OF OCCURRENCE		2002	2001	2004	2005	2003	1998	2000	2003	2004	2005	2003	2002	DEC 2002
	MAXIMUM 5-SECOND:														
SPEED (MPH)	9	39	49	51	49	41	55	47	46	55	36	46	54	55	
DIR. (TENS OF DEGS)		26	25	08	25	17	28	13	23	01	09	25	10	01	
YEAR OF OCCURRENCE		2000	2001	2001	2005	2004	1998	1998	1997	2005	2005	2004	2002	SEP 2005	
PRECIPITATION	NORMAL (IN)	30	4.69	4.39	4.99	3.35	3.86	3.94	4.41	3.78	3.53	3.47	3.71	3.71	47.83
	MAXIMUM MONTHLY (IN)	62	9.47	9.24	10.93	10.92	11.34	13.25	10.53	7.43	11.84	7.75	14.98	8.45	14.98
	YEAR OF OCCURRENCE		1960	1961	1964	1998	1959	1994	1964	1961	2004	1997	1948	1945	NOV 1948
	MINIMUM MONTHLY (IN)	62	0.64	0.75	1.05	0.69	0.41	0.87	0.93	0.09	0.17	T	0.33	0.81	T
	YEAR OF OCCURRENCE		1981	1978	2004	1950	1988	1958	1947	1951	2005	1963	1950	1988	OCT 1963
	MAXIMUM IN 24 HOURS (IN)	62	3.86	3.58	4.89	3.87	5.54	9.93	6.58	4.43	5.34	7.61	4.05	4.33	9.93
	YEAR OF OCCURRENCE		1969	1981	1990	1979	1959	1967	2001	1995	1956	1989	1948	1972	JUN 1967
	NORMAL NO. DAYS WITH:														
PRECIPITATION ≥ 0.01	30	11.5	9.6	10.7	8.1	8.9	9.8	10.1	9.2	8.5	6.4	9.0	10.0	111.8	
PRECIPITATION ≥ 1.00	30	1.3	1.4	1.6	0.8	1.2	1.2	1.4	1.1	1.1	1.1	1.1	1.1	14.4	
SNOWFALL	NORMAL (IN)	30	1.1	1.0	0.6	0.0	0.0	0.0	0.0	0.0	0.0	0.0	0.*	0.2	2.9
	MAXIMUM MONTHLY (IN)	53	7.1	4.7	8.7	0.0	T	0.0	0.0	0.0	0.0	0.0	2.2	3.0	8.7
	YEAR OF OCCURRENCE		1987	1979	1983		1995						1968	1971	MAR 1983
	MAXIMUM IN 24 HOURS (IN)	53	7.1	4.6	8.7	0.0	T	0.0	0.0	0.0	0.0	0.0	2.2	3.0	8.7
	YEAR OF OCCURRENCE		1987	1989	1983		1995						1968	1971	MAR 1983
	MAXIMUM SNOW DEPTH (IN)	41	4	3	6	0	0	0	0	0	0	0	0	3	6
	YEAR OF OCCURRENCE		1982	1980	1983									1971	MAR 1983
NORMAL NO. DAYS WITH:															
SNOWFALL ≥ 1.0	30	0.3	0.3	0.1	0.0	0.0	0.0	0.0	0.0	0.0	0.0	0.0	0.1	0.8	

PRECIPITATION (inches) 2005 ATHENS, GA (AHN)

YEAR	JAN	FEB	MAR	APR	MAY	JUN	JUL	AUG	SEP	OCT	NOV	DEC	ANNUAL
1976	4.06	2.07	8.55	0.74	8.50	2.47	2.97	5.31	3.01	6.22	5.25	5.28	54.43
1977	4.14	1.79	5.99	1.86	0.88	1.76	5.58	6.33	3.35	7.41	4.86	2.19	46.14
1978	6.92	0.75	3.48	2.78	4.82	2.39	6.41	4.35	1.15	0.97	2.50	3.52	40.04
1979	6.54	6.21	2.72	8.10	3.68	2.51	5.94	3.45	2.44	2.56	3.50	1.38	49.03
1980	6.76	1.84	10.00	2.68	7.52	3.43	1.69	2.55	5.55	1.48	2.66	1.90	48.06
1981	0.64	6.73	2.45	2.10	3.67	1.50	2.32	1.00	1.04	2.06	1.81	7.57	32.89
1982	4.83	7.07	1.88	5.74	4.33	3.65	3.13	3.10	2.19	4.56	5.56	3.56	49.60
1983	3.19	5.42	6.10	5.17	2.30	3.17	1.99	2.06	5.62	3.64	6.90	8.22	53.78
1984	4.50	5.94	5.18	4.84	3.40	3.79	10.20	3.59	0.72	2.75	2.32	2.62	49.85
1985	4.11	4.62	1.15	1.73	3.81	2.08	6.36	2.39	0.62	5.15	4.99	1.39	38.40
1986	0.76	1.65	3.27	1.22	2.20	2.13	3.63	3.76	1.94	7.65	4.77	3.03	36.01
1987	6.29	5.17	4.29	0.89	2.30	3.34	4.83	0.98	2.39	0.36	2.61	2.39	35.84
1988	5.35	2.88	2.53	3.39	0.41	0.91	1.67	2.52	5.37	2.33	4.19	0.81	32.36
1989	2.10	3.21	3.96	4.20	3.99	6.21	6.20	1.97	10.30	5.85	3.51	5.29	56.79
1990	5.74	7.47	8.17	2.15	1.96	1.93	6.13	6.21	3.15	5.17	1.38	3.28	52.74
1991	6.32	3.32	6.07	4.52	5.78	10.94	6.17	5.19	2.22	0.12	1.58	3.19	55.42
1992	3.34	4.75	4.14	1.08	1.48	4.39	4.17	6.19	5.72	2.80	8.25	5.71	52.02
1993	4.40	5.01	7.35	2.73	3.24	1.36	1.54	2.03	3.23	3.85	3.43	2.83	41.00
1994	3.91	3.25	5.88	3.03	1.96	13.25	8.77	7.37	4.28	6.68	3.52	1.94	63.84
1995	4.88	6.39	2.61	3.02	4.33	6.54	2.28	7.22	3.41	7.29	5.03	2.52	55.52
1996	6.71	3.20	6.90	3.35	2.08	2.99	4.53	3.88	3.76	0.80	3.95	3.34	45.49
1997	5.23	7.72	1.66	3.99	2.79	5.01	4.88	1.55	6.79	7.75	3.52	5.91	56.80
1998	5.87	7.72	4.99	10.92	3.08	1.95	2.38	2.62	4.46	2.30	2.06	1.85	50.20
1999	5.45	2.74	2.75	2.51	1.16	6.95	3.49	4.09	3.29	3.78	2.70	2.54	41.45
2000	4.48	1.99	3.41	1.70	2.16	1.98	3.36	3.67	4.81	0.23	4.20	3.46	35.45
2001	2.75	3.03	8.58	1.83	3.03	5.14	10.38	0.85	1.57	0.42	0.65	1.49	39.72
2002	4.51	2.25	6.53	1.64	3.17	4.77	2.26	0.14	7.47	3.29	4.82	5.44	46.29
2003	1.74	4.54	5.67	2.50	7.98	5.98	8.27	3.41	1.69	2.07	3.94	2.29	50.08
2004	2.52	4.28	1.05	0.87	1.32	3.68	1.84	3.87	11.84	0.98	7.95	2.80	43.00
2005	2.59	4.89	6.85	5.87	2.67	10.25	9.35	5.47	0.17	2.97	2.78	4.56	58.42
POR= 60 YRS	4.61	4.48	5.24	3.82	3.97	4.23	4.88	3.53	3.70	3.02	3.64	3.85	48.97

WBAN : 13873

AVERAGE TEMPERATURE (°F) 2005 ATHENS, GA (AHN)

YEAR	JAN	FEB	MAR	APR	MAY	JUN	JUL	AUG	SEP	OCT	NOV	DEC	ANNUAL
1976	39.7	52.4	57.2	62.6	66.2	74.0	77.9	76.9	70.4	57.9	47.1	41.2	60.3
1977	31.2	43.3	56.9	64.4	71.4	78.6	81.8	78.2	74.4	59.5	55.0	43.4	61.5
1978	35.3	39.0	51.7	63.2	68.5	77.8	80.0	78.4	74.9	61.3	57.7	46.1	61.2
1979	38.8	42.1	55.9	62.6	69.9	74.3	77.6	79.0	72.0	61.7	55.1	46.5	61.3
1980	45.0	42.0	51.0	61.0	69.8	76.5	83.2	81.7	76.5	59.5	50.9	45.4	61.9
1981	39.8	46.1	52.2	67.3	67.9	82.1	83.1	77.6	73.0	60.6	53.0	39.7	61.9
1982	38.1	48.4	56.9	60.5	74.7	78.5	82.3	79.8	74.0	63.5	54.7	51.5	63.6
1983	42.1	46.1	53.7	58.3	70.2	75.1	82.3	83.4	72.7	63.7	54.2	42.9	62.1
1984	42.5	48.8	54.0	59.5	69.2	79.7	76.9	79.2	73.1	69.7	50.8	53.9	63.1
1985	37.8	45.8	56.3	64.2	70.2	77.7	78.0	77.3	72.2	65.9	61.8	41.0	62.4
1986	42.0	49.7	54.4	62.8	70.3	79.4	83.9	77.7	74.2	63.5	57.0	44.6	63.3
1987	41.8	45.5	52.5	59.4	72.7	77.9	81.3	81.9	73.8	57.7	55.2	47.9	62.3
1988	39.2	44.7	53.9	61.8	69.4	77.6	80.5	80.5	72.8	57.9	54.0	45.3	61.5
1989	48.1	47.9	55.4	61.2	67.1	76.5	79.3	78.7	71.9	63.0	53.0	38.4	61.7
1990	48.5	53.0	56.4	60.7	69.2	78.0	80.6	79.6	73.9	63.6	55.7	49.0	64.0
1991	43.9	49.3	55.8	64.1	71.8	75.3	80.0	77.3	73.0	63.8	51.3	48.5	62.8
1992	45.2	50.3	52.7	60.5	66.9	74.6	80.6	76.5	73.3	60.7	51.5	43.8	61.4
1993	46.8	44.0	50.1	58.0	69.8	78.8	85.3	81.1	75.4	61.9	52.3	43.7	62.3
1994	39.0	48.3	55.8	64.6	67.7	77.8	77.8	77.1	71.9	61.9	56.3	49.0	62.3
1995	44.3	44.6	57.1	63.0	71.2	75.0	82.1	81.0	72.0	63.8	49.7	43.8	62.3
1996	41.2	46.1	48.6	59.6	71.7	76.3	79.4	77.3	71.4	61.0	49.3	46.4	60.7
1997	44.6	48.7	59.5	57.5	65.0	72.2	79.7	76.9	72.4	61.8	48.2	43.7	60.9
1998	46.6	48.1	50.7	58.9	72.5	80.1	82.5	79.0	75.4	65.2	56.3	49.8	63.8
1999	47.2	48.8	50.5	64.6	68.5	75.8	80.2	81.8	72.4	62.8	56.1	46.6	62.9
2000	42.8	49.4	57.2	58.8	73.5	78.3	81.0	78.8	70.7	63.2	51.4	36.9	61.8
2001	42.8	50.7	50.9	63.2	69.7	75.0	78.6	78.7	70.8	60.0	58.5	50.3	62.4
2002	45.7	45.8	54.6	65.4	67.7	75.9	80.4	80.2	75.2	64.5	49.7	43.6	62.4
2003	40.7	46.1	55.4	60.3	68.5	74.6	77.7	78.8	72.1	62.5	57.1	42.2	61.3
2004	42.3	42.9	57.4	61.3	73.3	77.5	80.1	76.7	71.6	65.6	55.0	43.7	62.3
2005	46.1	47.9	51.7	59.7	66.3	75.3	79.5	79.5	76.7	64.2	54.3	42.2	62.0
POR= 61 YRS	43.1	46.3	53.2	61.7	69.7	76.7	79.7	78.7	73.1	62.6	52.8	44.8	61.9

HEATING DEGREE DAYS (base 65°F) 2005 ATHENS, GA (AHN)

YEAR	JUL	AUG	SEP	OCT	NOV	DEC	JAN	FEB	MAR	APR	MAY	JUN	TOTAL
1976-77	0	0	6	234	532	735	1040	604	248	86	10	0	3495
1977-78	0	0	2	187	298	663	913	721	410	99	38	0	3331
1978-79	0	0	1	132	218	581	804	635	289	92	22	0	2774
1979-80	0	0	6	134	295	567	609	664	430	143	12	0	2860
1980-81	0	0	21	193	413	601	777	525	395	42	40	0	3007
1981-82	0	0	7	171	358	779	824	457	268	166	3	0	3033
1982-83	0	0	3	127	311	428	706	526	350	212	10	0	2673
1983-84	0	0	17	90	315	676	689	460	338	191	30	0	2806
1984-85	0	0	5	23	428	340	838	533	276	107	13	0	2563
1985-86	0	0	20	80	120	736	708	424	329	130	13	0	2560
1986-87	0	8	2	123	257	628	713	541	383	204	5	0	2864
1987-88	0	0	0	224	289	526	795	583	341	123	12	0	2893
1988-89	0	0	0	230	321	602	518	477	312	190	64	0	2714
1989-90	0	0	25	124	357	817	504	333	276	162	25	0	2623
1990-91	0	0	15	111	275	489	648	433	289	82	10	0	2352
1991-92	0	0	12	93	412	513	609	420	379	174	64	4	2680
1992-93	0	0	13	130	397	650	558	581	455	214	17	0	3015
1993-94	0	0	10	140	394	655	799	466	288	87	35	0	2874
1994-95	0	0	2	121	266	490	637	564	252	105	22	0	2459
1995-96	0	0	21	96	457	651	732	539	500	184	26	1	3207
1996-97	0	0	7	148	466	572	626	450	182	231	64	13	2759
1997-98	0	0	6	157	499	651	566	466	448	183	13	0	2989
1998-99	0	0	0	68	258	468	543	447	444	102	15	0	2345
1999-00	0	0	9	114	262	559	682	446	239	184	1	0	2496
2000-01	0	0	15	89	412	865	678	395	431	121	12	0	3018
2001-02	0	0	27	182	200	449	594	530	333	73	53	0	2441
2002-03	0	0	2	114	457	655	744	524	293	151	13	0	2953
2003-04	0	0	13	97	264	703	695	634	243	149	23	0	2821
2004-05	0	0	4	42	310	653	578	473	407	162	45	4	2678
2005-	0	0	0	131	325	702							

WBAN : 13873

COOLING DEGREE DAYS (base 65°F) 2005 ATHENS, GA (AHN)

YEAR	JAN	FEB	MAR	APR	MAY	JUN	JUL	AUG	SEP	OCT	NOV	DEC	ANNUAL
1976	0	2	11	50	89	282	410	376	177	18	0	0	1415
1977	0	0	6	74	215	415	524	417	292	24	5	1	1973
1978	0	0	3	52	154	392	473	423	306	24	4	1	1832
1979	0	0	15	25	180	286	398	443	221	40	6	0	1614
1980	0	2	1	30	170	354	573	525	373	32	1	0	2061
1981	0	0	5	116	138	517	569	398	256	40	4	0	2043
1982	0	1	28	36	308	413	545	463	279	85	11	15	2184
1983	0	0	8	17	175	312	543	578	256	58	0	0	1947
1984	0	0	4	31	167	450	375	446	254	174	7	2	1910
1985	3	0	14	89	181	391	411	388	242	117	29	0	1865
1986	0	0	8	70	185	441	592	408	283	85	25	0	2097
1987	0	0	2	44	252	395	514	530	273	3	4	2	2019
1988	0	0	4	34	157	387	487	490	239	17	0	0	1815
1989	0	7	23	81	136	352	451	432	238	70	1	0	1791
1990	0	0	16	39	162	397	491	460	290	76	2	0	1933
1991	0	0	11	62	228	315	472	391	259	63	8	11	1820
1992	0	0	3	45	132	297	489	362	269	7	0	0	1604
1993	0	0	3	12	174	421	634	504	330	52	18	0	2148
1994	0	4	11	83	127	392	401	382	214	32	11	0	1657
1995	0	0	10	51	222	304	535	503	239	67	4	0	1935
1996	0	0	0	30	239	346	453	389	206	34	3	0	1700
1997	0	0	22	12	71	236	465	376	235	64	0	0	1481
1998	2	0	13	10	251	458	548	441	317	82	5	2	2129
1999	0	1	0	98	130	330	477	529	238	56	1	0	1860
2000	0	0	4	6	273	407	504	433	194	42	9	0	1872
2001	0	1	0	74	165	307	427	432	207	34	12	0	1659
2002	3	0	18	95	145	334	484	477	314	104	5	0	1979
2003	0	0	2	17	128	298	403	432	232	28	35	0	1575
2004	0	0	15	44	284	380	473	369	208	69	16	0	1858
2005	0	0	0	10	94	319	456	460	359	112	10	0	1820

SNOWFALL (inches) 2005 ATHENS, GA (AHN)

YEAR	JUL	AUG	SEP	OCT	NOV	DEC	JAN	FEB	MAR	APR	MAY	JUN	TOTAL
1976-77	0.0	0.0	0.0	0.0	T	0.0	1.0	0.0	0.0	0.0	0.0	0.0	1.0
1977-78	0.0	0.0	0.0	0.0	0.0	T	T	0.2	T	0.0	0.0	0.0	0.2
1978-79	0.0	0.0	0.0	0.0	0.0	0.0	T	4.7	0.0	0.0	0.0	0.0	4.7
1979-80	0.0	0.0	0.0	0.0	0.0	0.0	0.0	3.0	3.3	0.0	0.0	0.0	6.3
1980-81	0.0	0.0	0.0	0.0	T	T	T	T	0.0	0.0	0.0	0.0	T
1981-82	0.0	0.0	0.0	0.0	0.0	T	5.1	2.0	0.0	0.0	0.0	0.0	7.1
1982-83	0.0	0.0	0.0	0.0	0.0	0.0	1.8	0.1	8.7	0.0	0.0	0.0	10.6
1983-84	0.0	0.0	0.0	0.0	0.0	T	T	1.0	0.0	0.0	0.0	0.0	1.0
1984-85	0.0	0.0	0.0	0.0	0.0	0.0	0.2	0.5	0.0	0.0	0.0	0.0	0.7
1985-86	0.0	0.0	0.0	0.0	0.0	T	T	T	T	0.0	0.0	0.0	T
1986-87	0.0	0.0	0.0	0.0	0.0	0.0	7.1	0.0	0.4	0.0	0.0	0.0	7.5
1987-88	0.0	0.0	0.0	0.0	0.0	0.0	3.3	0.0	0.0	0.0	0.0	0.0	3.3
1988-89	0.0	0.0	0.0	0.0	0.0	0.0	0.0	4.6	0.0	0.0	0.0	0.0	4.6
1989-90	0.0	0.0	0.0	0.0	0.0	0.3	0.0	0.0	0.0	0.0	0.0	0.0	0.3
1990-91	0.0	0.0	0.0	0.0	0.0	0.0	1.9	T	0.0	0.0	0.0	0.0	1.9
1991-92	0.0	0.0	0.0	0.0	0.0	0.0	2.0	0.0	T	0.0	0.0	0.0	2.0
1992-93	0.0	0.0	0.0	0.0	0.0	0.0	0.0	T	2.7	0.0	0.0	0.0	2.7
1993-94	0.0	0.0	0.0	0.0	0.0	1.5	0.2	0.0	0.0	0.0	0.0	0.0	1.7
1994-95	0.0	0.0	0.0	0.0	0.0	0.0	T	0.1	0.0	0.0	T	0.0	0.1
1995-96	0.0	0.0	0.0	0.0	0.0	0.0	0.8	1.9					
1996-97													
1997-98													
1998-99													
1999-00													
2000-01													
2001-02													
2002-03													
2003-04													
2004-05													
2005-													
POR= 53 YRS	0.0	0.0	0.0	0.0	0.1	0.2	0.9	0.7	0.5	0.0	T	0.0	2.4

WBAN : 13873

REFERENCE NOTES:

<p>PAGE 1: THE TEMPERATURE GRAPH SHOWS NORMAL MAXIMUM AND NORMAL MINIMUM DAILY TEMPERATURES (SOLID CURVES) AND THE ACTUAL DAILY HIGH AND LOW TEMPERATURES (VERTICAL BARS).</p> <p>PAGE 2 AND 3: H/C INDICATES HEATING AND COOLING DEGREE DAYS. RH INDICATES RELATIVE HUMIDITY W/O INDICATES WEATHER AND OBSTRUCTIONS S INDICATES SUNSHINE. PR INDICATES PRESSURE. CLOUDINESS ON PAGE 3 IS THE SUM OF THE CEILOMETER AND SATELLITE DATA NOT TO EXCEED EIGHT EIGHTHS (OKTAS).</p> <p>GENERAL: T INDICATES TRACE PRECIPITATION, AN AMOUNT GREATER THAN ZERO BUT LESS THAN THE LOWEST REPORTABLE VALUE. + INDICATES THE VALUE ALSO OCCURS ON EARLIER DATES. BLANK ENTRIES DENOTE MISSING OR UNREPORTED DATA. NORMALS ARE 30-YEAR AVERAGES (1971 - 2000). ASOS INDICATES AUTOMATED SURFACE OBSERVING SYSTEM. PM INDICATES THE LAST DAY OF THE PREVIOUS MONTH. POR (PERIOD OF RECORD) BEGINS WITH THE JANUARY DATA MONTH AND IS THE NUMBER OF YEARS USED TO COMPUTE THE MEAN. INDIVIDUAL MONTHS WITHIN THE POR MAY BE MISSING. WHEN THE POR FOR A NORMAL IS LESS THAN 30 YEARS, THE NORMAL IS PROVISIONAL AND IS BASED ON THE NUMBER OF YEARS INDICATED. 0.* OR * INDICATES THE VALUE OR MEAN-DAYS-WITH IS BETWEEN 0.00 AND 0.05. CLOUDINESS FOR ASOS STATIONS DIFFERS FROM THE NON-ASOS OBSERVATION TAKEN BY A HUMAN OBSERVER. ASOS STATION CLOUDINESS IS BASED ON TIME-AVERAGED CEILOMETER DATA FOR CLOUDS AT OR BELOW 12,000 FEET AND ON SATELLITE DATA FOR CLOUDS ABOVE 12,000 FEET. THE NUMBER OF DAYS WITH CLEAR, PARTLY CLOUDY, AND CLOUDY CONDITIONS FOR ASOS STATIONS IS THE SUM OF THE CEILOMETER AND SATELLITE DATA FOR THE SUNRISE TO SUNSET PERIOD.</p>	<p>GENERAL CONTINUED: CLEAR INDICATES 0 - 2 OKTAS, PARTLY CLOUDY INDICATES 3 - 6 OKTAS, AND CLOUDY INDICATES 7 OR 8 OKTAS. WHEN AT LEAST ONE OF THE ELEMENTS (CEILOMETER OR SATELLITE) IS MISSING, THE DAILY CLOUDINESS IS NOT COMPUTED. WIND DIRECTION IS RECORDED IN TENS OF DEGREES (2 DIGITS) CLOCKWISE FROM TRUE NORTH. "00" INDICATES CALM. "36" INDICATES TRUE NORTH. RESULTANT WIND IS THE VECTOR AVERAGE OF THE SPEED AND DIRECTION. AVERAGE TEMPERATURE IS THE SUM OF THE MEAN DAILY MAXIMUM AND MINIMUM TEMPERATURE DIVIDED BY 2. SNOWFALL DATA COMPRISE ALL FORMS OF FROZEN PRECIPITATION, INCLUDING HAIL. A HEATING (COOLING) DEGREE DAY IS THE DIFFERENCE BETWEEN THE AVERAGE DAILY TEMPERATURE AND 65° F. DRY BULB IS THE TEMPERATURE OF THE AMBIENT AIR. DEW POINT IS THE TEMPERATURE TO WHICH THE AIR MUST BE COOLED TO ACHIEVE 100 PERCENT RELATIVE HUMIDITY. WET BULB IS THE TEMPERATURE THE AIR WOULD HAVE IF THE MOISTURE CONTENT WAS INCREASED TO 100 PERCENT RELATIVE HUMIDITY.</p> <p>ON JULY 1, 1996, THE NATIONAL WEATHER SERVICE BEGAN USING THE "METAR" OBSERVATION CODE THAT WAS ALREADY EMPLOYED BY MOST OTHER NATIONS OF THE WORLD. THE MOST NOTICEABLE DIFFERENCE IN THIS ANNUAL PUBLICATION WILL BE THE CHANGE IN UNITS FROM TENTHS TO EIGHTS (OKTAS) FOR REPORTING THE AMOUNT OF SKY COVER.</p>
--	---

2005 ATHENS, GEORGIA (AHN)

Athens is located in northeast Georgia, in the Piedmont Plateau section of the state. The terrain is rolling to hilly with the elevation within the city averaging about 700 feet above sea level, and that of the county ranging mostly between 600 and 850 feet. The Atlantic Ocean 200 miles to the southeast, the Gulf of Mexico 275 miles to the south, and the southern Appalachian Mountains to the north and northwest, all exert some influence on the climate of Athens, with the total effect being a moderation of both summer and winter weather.

Summers are warm and somewhat humid in Athens, but there is a noticeable absence of prolonged periods of extreme heat. The maximum temperature reaches 90 degrees or higher on about one-half the days during the three months, June through August, but a temperature of 100 degrees or higher occurs during fewer than one-half the years.

With the mountains to the north serving as a partial barrier to the flow of extremely cold air into the area, winters in Athens are not severe. Cold spells are usually short-lived, interspersed with periods of warm southerly air flow, making normal outside activities possible throughout most years.

Average annual precipitation in Athens is fairly evenly distributed throughout the year, with slight maxima in winter, early spring, and in

midsummer. In spite of what appears to be an abundant supply of moisture, dry spells of more or less serious consequence occur during most years. Fortunately, they are more frequent in autumn when long periods of clear, mild, weather not only are pleasant, but offer ideal conditions for harvesting operations.

Snowfall is not of much importance in the area. Measurable amounts occur rather infrequently, but occasionally there is sufficient fall to cause some accumulation on the ground.

The average length of the freeze-free growing season in Athens is 220 days, from early April, the average occurrence of the last spring freeze, to early November, the average occurrence of the first fall freeze.

Thunderstorms occur in all months of the year but are most frequent in June and July. Severe thunderstorms are infrequent, but may occur as isolated summer storms, or in squall lines of winter and spring. A few tornadoes have crossed the city and county since 1930, causing several deaths.

STATION LOCATION

ATHENS, GEORGIA

LOCATION	Occupied From	Occupied To	Airline Distances and Directions from previous Location	LATITUDE NORTH	LONGITUDE WEST	ELEVATION ABOVE										AUTOMATIC OBSERVING EQUIPMENT *	* TYPE M = AMOS T = AUTOB S = ASOS W = AWOS REMARKS
						GROUND											
						SEA LEVEL	WIND INSTRUMENT	EXTREME THERMOMETERS	PSYCHROMETER	SUNSHINE SWITCH	TIPPING BUCKET	WINDHOLE GAUGE	8 INCH RAIN GAUGE	HYGROMETER			
*NOTE:																	
<u>AIRPORT</u>																	
Administration Building Clarke County Airport 4 miles east of P. O.	7/20/43	2/7/46	NA	33°58'	83°19'	798	56	5	5					4		WBAS established 7/20/43, precipitation records began 4/44, temperature records 6/44.	
Clarke County Airport	2/7/46	9/1/55	600 ft. S	33°57'	83°19'	798	36	5	5					4		a. Added 4/11/58.	
Clarke County Airport	9/1/55	9/23/59	150ft. SE	33°57'	83°19'	798	36	6	5			a4		4		b. Commissioned 750 feet NE of thermometer site 2/1/64.	
Administration Building Municipal Airport (Also known as Clarke County Airport and Ben Epps Field)	9/24/59	2/01/96	800 ft. E	33°57'	83°19'	801 c802	20 f25	5 g5	5 g5			e4 g4	3 d4 g4	3 d4 g4	b4 f4 h4	c. Effective 2/1/64. d. Moved 125' NW 8/26/65. e. Installed 9/24/76. f. Minor relocation 9/1981. g. Minor relocation 9/1983. h. Type change 7/1/85.	
Municipal Airport	2/01/96	Present	NA	33°57'	83°20'	1800									S	ASOS Commissioned 02/01/96 i. Ground elevation.	

For Hard Copy Subscription:

Price and ordering information: NCDC Subscribing Service Center, 310 State Route 956, Building 300, Rocket Center, WV 26726.

INQUIRIES/COMMENTS CALL: Toll Free (866) 742-3322

Visit our Web Site for other weather data: www.ncdc.noaa.gov

Non-Subscription Request:

NCDC Customer Services;
Phone: 828-271-4800
Fax: 828-271-4876
Email: ncdc.orders@noaa.gov

OFFICIAL BUSINESS
PENALTY FOR PRIVATE USE \$300
CHANGE SERVICE REQUESTED

**FIRST CLASS
POSTAGE & FEES PAID
United States Department of Commerce
NOAA Permit No. G - 19**

* NOTES: For earlier station history see previous edition.