

2004

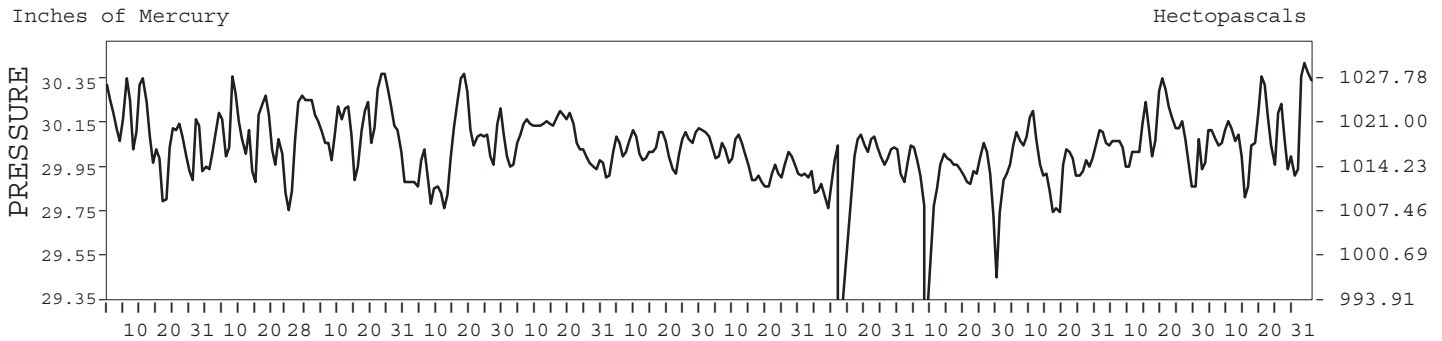
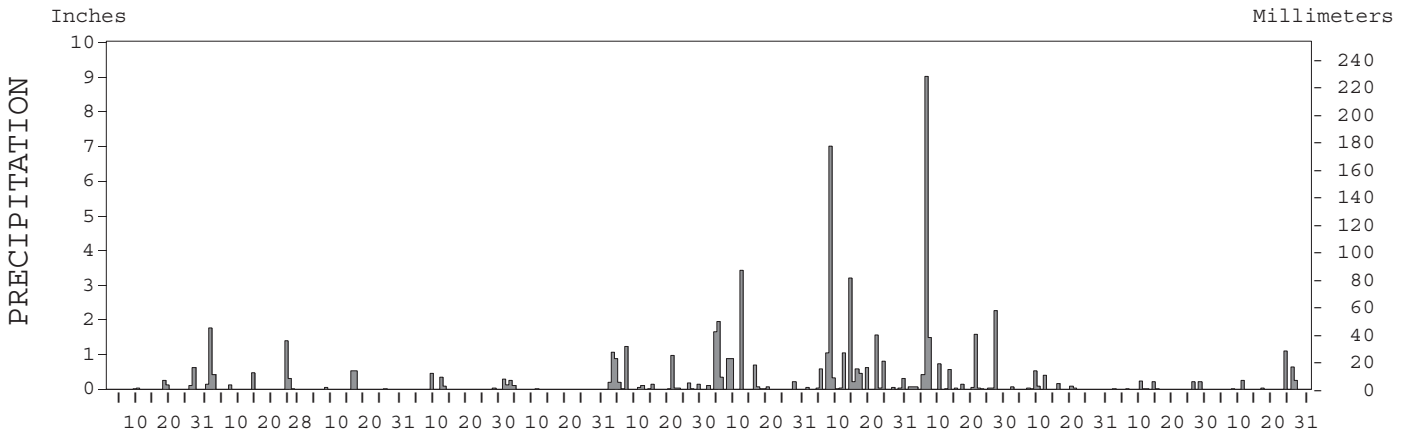
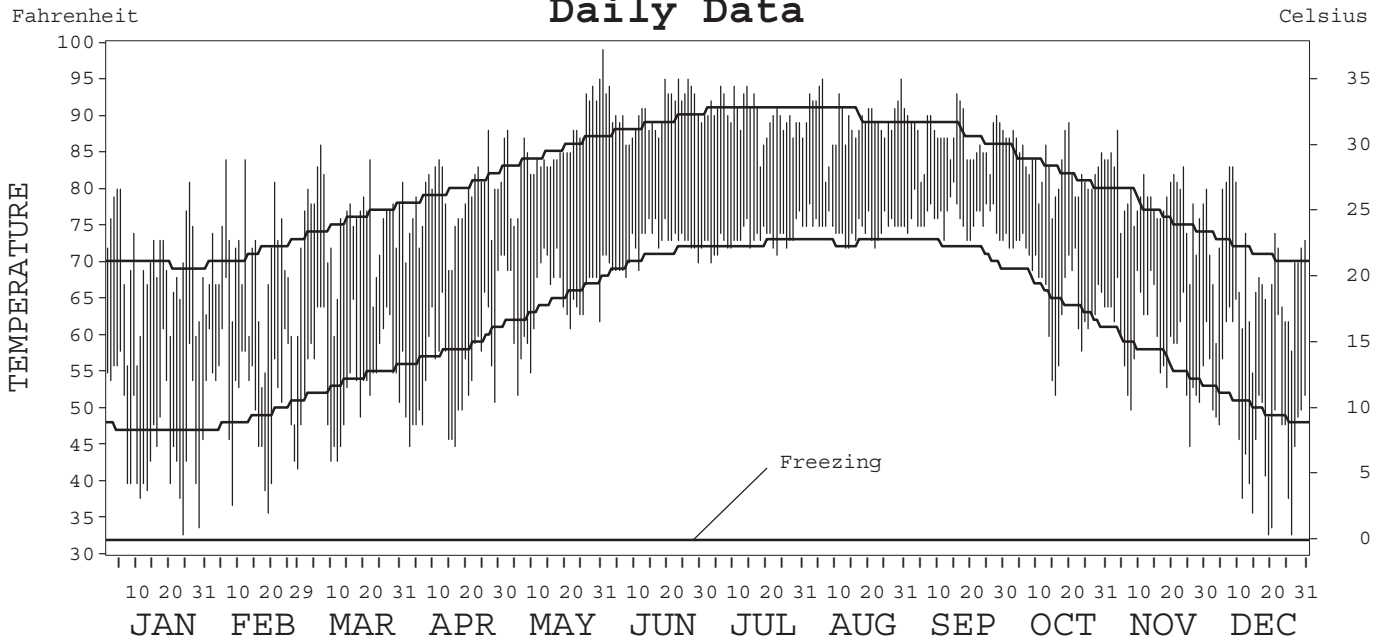
LOCAL CLIMATOLOGICAL DATA
ANNUAL SUMMARY WITH COMPARATIVE DATA



ISSN 0198-1226

DAYTONA BEACH,
FLORIDA (DAB)

Daily Data



I CERTIFY THAT THIS IS AN OFFICIAL PUBLICATION OF THE NATIONAL OCEANIC AND ATMOSPHERIC ADMINISTRATION,
AND IS COMPILED FROM RECORDS ON FILE AT THE NATIONAL CLIMATIC DATA CENTER.

Thomas R. Karl

NATIONAL OCEANIC AND ATMOSPHERIC ADMINISTRATION	NATIONAL ENVIRONMENTAL SATELLITE, DATA, AND INFORMATION SERVICE	NATIONAL CLIMATIC DATA CENTER ASHEVILLE, NORTH CAROLINA	DIRECTOR NATIONAL CLIMATIC DATA CENTER
---	---	---	---

METEOROLOGICAL DATA FOR 2004

DAYTONA BEACH, FL (DAB)

LATITUDE: 29° 10' 38" N LONGITUDE: 81° 03' 36" W ELEVATION (FT): GRND: 31 BARO: 34 TIME ZONE: EASTERN (UTC + 5) WBAN: 12834

	ELEMENT	JAN	FEB	MAR	APR	MAY	JUN	JUL	AUG	SEP	OCT	NOV	DEC	YEAR	
TEMPERATURE °F	MEAN DAILY MAXIMUM	69.2	68.5	75.7	78.3	85.9	90.6	90.0	89.5	87.1	83.0	78.5	68.8	80.4	
	HIGHEST DAILY MAXIMUM	81	84	86	88	99	95	94	95	93	89	88	83	99	
	DATE OF OCCURRENCE	26	12+	06	26	31	26+	14+	30+	16	20	04	09+	MAY 31	
	MEAN DAILY MINIMUM	46.7	51.3	54.9	55.3	65.0	72.1	73.3	74.7	76.0	66.3	59.0	48.8	62.0	
	LOWEST DAILY MINIMUM	33	36	43	45	52	68	70	72	73	52	45	33	33	
	DATE OF OCCURRENCE	24	19	11+	16+	05	07	03	22+	30+	16	26	27+	DEC 27+	
	AVERAGE DRY BULB	58.0	59.9	65.3	66.8	75.5	81.4	81.7	82.1	81.6	74.7	68.8	58.8	71.2	
	MEAN WET BULB	53.8	55.9	59.0	60.3	68.0	74.0	74.8			68.8	63.0	54.1		
	MEAN DEW POINT	50.5	52.7	53.8	54.6	63.7	71.3	72.2			65.7	59.0	49.7		
	NUMBER OF DAYS WITH:														
	MAXIMUM ≥ 90°	0	0	0	0	6	18	19	15	7	0	0	0	0	65
	MAXIMUM ≤ 32°	0	0	0	0	0	0	0	0	0	0	0	0	0	0
	MINIMUM ≤ 32°	0	0	0	0	0	0	0	0	0	0	0	0	0	0
	MINIMUM ≤ 0°	0	0	0	0	0	0	0	0	0	0	0	0	0	0
H/C	HEATING DEGREE DAYS	227	166	54	44	1	0	0	0	0	0	15	230	737	
	COOLING DEGREE DAYS	17	24	73	106	330	497	522	535	505	308	134	45	3096	
RH	MEAN (PERCENT)	81	79	69	67	69	77	78	81	76	76	73	74	75	
	HOUR 01 LST	92	87	83	84	85	90	89	90	81	86	84	83	86	
	HOUR 07 LST	96	90	85	82	85	86	89	91	83	88	87	84	87	
	HOUR 13 LST	59	64	49	48	51	59	61	66	66	59	54	59	58	
	HOUR 19 LST	81	77	65	62	62	77	76	81	77	76	74	76	74	
S	PERCENT POSSIBLE SUNSHINE														
W/O	NUMBER OF DAYS WITH:														
	HEAVY FOG (VISBY ≤ 1/4 MI)	3	5	0	2	0	1	6	1	2	1	0	1	22	
	THUNDERSTORMS	0	1	2	3	2	21	17	30	6	2	1	2	87	
CLOUDINESS	SUNRISE-SUNSET: (OKTAS)														
	CEILOMETER (≤ 12,000 FT.)														
	SATELLITE (> 12,000 FT.)														
	MIDNIGHT-MIDNIGHT: (OKTAS)														
	CEILOMETER (≤ 12,000 FT.)														
	SATELLITE (> 12,000 FT.)														
NUMBER OF DAYS WITH:															
CLEAR															
PARTLY CLOUDY															
CLOUDY															
PR	MEAN STATION PRESS. (IN.)	30.11	30.09	30.16	30.03	30.09	30.06	29.98			30.00	30.10	30.13		
	MEAN SEA-LEVEL PRESS. (IN.)	30.15	30.13	30.20	30.07	30.13	30.10	30.02			30.05	30.14	30.17		
WINDS	RESULTANT SPEED (MPH)	2.6	2.5	1.4	0.5	0.8	0.6	1.1			0.4	2.4	3.1		
	RES. DIR. (TENS OF DEGS.)	31	34	04	20	34	15	14			34	04	31		
	MEAN SPEED (MPH)	6.4	7.7	7.3	7.2	6.3	5.5	5.4	5.8	13.1	6.2	6.9	6.9	7.1	
	PREVAIL. DIR. (TENS OF DEGS.)	32	36	08	25	09	19	21	22	03	07	06	31	07	
	MAXIMUM 2-MINUTE WIND:														
	SPEED (MPH)	26	26	26	30	21	38	43	69	52	24	26	24	69	
	DIR. (TENS OF DEGS.)	01	04	01	26	01	07	34	01	06	01	06	30	01	
	DATE OF OCCURRENCE	07	01	22	14	04	03	11	13	26	22+	14+	26+	AUG 13	
	MAXIMUM 5-SECOND WIND:														
	SPEED (MPH)	33	32	31	37	26	49	52	83	75	30	33	31	83	
DIR. (TENS OF DEGS.)	01	01	25	26	07	07	34	01	06	26	02	30	01		
DATE OF OCCURRENCE	07	28+	31+	13	15	03	11	13	05	15	09	26+	AUG 13		
PRECIPITATION	WATER EQUIVALENT:														
	TOTAL (IN.)	1.25	4.47	1.10	1.19	0.49	5.20	10.34	17.96	16.46	1.34	0.93	2.24	62.97	
	GREATEST 24-HOUR (IN.)	0.71	1.82	1.05	0.45	0.34	1.94	3.43	7.98	9.02	0.54	0.23	1.10	9.02	
	DATE OF OCCURRENCE	26-27	01-02	15-16	08	02-03	02-03	11	06-07	05	07-08	13-14+	23	SEP 05	
	NUMBER OF DAYS WITH:														
	PRECIPITATION ≥ 0.01	7	7	4	5	4	17	14	20	17	9	9	6	119	
PRECIPITATION ≥ 0.10	5	6	2	3	3	10	9	13	8	3	4	4	70		
PRECIPITATION ≥ 1.00	0	2	0	0	0	2	3	5	4	0	0	1	17		
SNOWFALL	SNOW, ICE PELLETS, HAIL:														
	TOTAL (IN.)														
	GREATEST 24-HOUR (IN.)														
	DATE OF OCCURRENCE														
	MAXIMUM SNOW DEPTH (IN.)														
	DATE OF OCCURRENCE														
NUMBER OF DAYS WITH:															
SNOWFALL ≥ 1.0															

NORMALS, MEANS, AND EXTREMES

DAYTONA BEACH, FL (DAB)

LATITUDE: 29° 10' 38" N LONGITUDE: 81° 03' 36" W ELEVATION (FT): GRND: 31 BARO: 34 TIME ZONE: EASTERN (UTC + 5) WBAN: 12834

ELEMENT		POR	JAN	FEB	MAR	APR	MAY	JUN	JUL	AUG	SEP	OCT	NOV	DEC	YEAR
TEMPERATURE °F	NORMAL DAILY MAXIMUM	30	69.7	71.1	75.6	79.8	85.0	88.8	91.0	90.1	87.9	82.6	76.9	71.4	80.8
	MEAN DAILY MAXIMUM	57	68.7	70.6	74.8	79.8	85.0	88.3	90.1	89.3	86.8	81.7	75.7	70.3	80.1
	HIGHEST DAILY MAXIMUM	61	87	89	92	96	100	102	102	100	99	95	89	88	102
	YEAR OF OCCURRENCE		1991	1985	1994	1968	1953	1944	1981	1999	1944	1959	1948	1990	JUL 1981
	MEAN OF EXTREME MAXS.	57	81.7	83.4	87.2	90.0	93.2	94.9	95.6	94.6	92.1	89.1	84.9	82.1	89.1
	NORMAL DAILY MINIMUM	30	47.1	48.8	53.7	58.0	64.5	70.6	72.4	72.8	71.9	65.3	57.0	50.1	61.0
	MEAN DAILY MINIMUM	57	47.4	49.4	53.7	58.6	65.1	70.5	72.3	72.7	72.0	65.5	56.2	49.7	61.1
	LOWEST DAILY MINIMUM	61	15	24	26	35	44	52	60	65	52	41	27	19	15
	YEAR OF OCCURRENCE		1985	1958	1980	1950	1971	1984	1981	1984	1956	1993	1950	1983	JAN 1985
	MEAN OF EXTREME MINS.	57	30.2	33.4	37.5	45.1	54.6	63.9	68.0	69.0	65.5	50.9	40.3	32.4	49.2
	NORMAL DRY BULB	30	58.4	60.0	64.7	68.9	74.8	79.7	81.7	81.5	79.9	74.0	67.0	60.8	71.0
	MEAN DRY BULB	57	58.0	59.9	64.3	69.3	75.0	79.5	81.2	81.0	79.4	73.6	66.0	60.0	70.6
	MEAN WET BULB	21	53.8	56.0	59.5	62.7	68.8	73.5	75.1	71.7	74.2	68.7	62.5	56.1	65.2
	MEAN DEW POINT	21	49.8	51.9	55.1	58.3	65.0	70.9	72.9	69.8	72.0	65.8	59.6	52.5	62.0
NORMAL NO. DAYS WITH:	MAXIMUM ≥ 90°	30	0.0	0.0	0.2	1.5	5.3	11.2	18.8	14.2	6.4	0.7	0.0	0.0	58.3
	MAXIMUM ≤ 32°	30	0.0	*	0.0	0.0	0.0	0.0	0.0	0.0	0.0	0.0	0.0	0.0	0.0
	MINIMUM ≤ 32°	30	2.2	1.2	0.3	0.0	0.0	0.0	0.0	0.0	0.0	0.0	1.4	5.1	
	MINIMUM ≤ 0°	30	0.0	0.0	0.0	0.0	0.0	0.0	0.0	0.0	0.0	0.0	0.0	0.0	
H/C	NORMAL HEATING DEG. DAYS	30	245	183	99	29	1	0	0	0	0	6	67	185	815
	NORMAL COOLING DEG. DAYS	30	36	40	86	150	306	441	513	502	436	277	122	52	2961
RH	NORMAL (PERCENT)	30	77	74	73	71	73	78	79	81	80	77	78	78	77
	HOUR 01 LST	30	85	84	84	83	85	88	89	90	88	84	86	85	86
	HOUR 07 LST	30	87	86	87	85	85	87	90	92	90	87	88	87	88
	HOUR 13 LST	30	59	56	55	52	57	63	63	66	67	62	61	61	60
	HOUR 19 LST	30	76	72	69	67	70	75	76	80	80	77	80	80	75
S	PERCENT POSSIBLE SUNSHINE														
W/O	MEAN NO. DAYS WITH: HEAVY FOG (VISBY ≤ 1/4 MI)	61	5.0	3.4	3.0	1.8	1.5	1.1	1.2	1.3	0.7	1.5	2.7	4.3	27.5
	THUNDERSTORMS	61	1.2	1.9	3.5	3.4	7.2	13.6	17.3	15.3	8.8	3.0	1.3	1.2	77.7
CLOUDINESS	MEAN: SUNRISE-SUNSET (OKTAS)	0			5.6		3.2	4.0							
	MIDNIGHT-MIDNIGHT (OKTAS)	0			5.6		4.0								
	MEAN NO. DAYS WITH: CLEAR	1	1.0	4.0	7.0		13.0	4.0							
	PARTLY CLOUDY	1	2.0	4.0	4.0		5.0	11.0							
CLOUDY	1	2.0	2.0	8.0		3.0	6.0								
PR	MEAN STATION PRESSURE (IN)	32	30.10	30.09	30.00	30.00	30.00	30.00	30.00	30.00	30.00	30.00	30.00	30.09	30.02
	MEAN SEA-LEVEL PRES. (IN)	21	30.13	30.12	30.07	30.04	30.02	30.03	30.07	30.03	30.01	30.03	30.10	30.13	30.07
WINDS	MEAN SPEED (MPH)	40	8.5	9.1	9.4	9.2	8.6	7.5	6.9	6.9	8.1	8.6	8.4	8.1	8.3
	PREVAIL. DIR (TENS OF DEGS)	25	32	36	24	24	09	08	24	08	07	07	31	31	08
	MAXIMUM 2-MINUTE: SPEED (MPH)	9	36	44	38	31	46	38	43	69	52	46	39	29	69
	DIR. (TENS OF DEGS)		23	23	07	31	28	07	34	01	06	03	05	26	01
	YEAR OF OCCURRENCE		1998	1998	2001	2000	1996	2004	2004	2004	2004	1999	2001	1997	AUG 2004
	MAXIMUM 5-SECOND: SPEED (MPH)	9	45	56	53	41	55	49	54	83	75	56	49	38	83
DIR. (TENS OF DEGS)		25	22	33	26	28	07	36	01	06	01	04	26	01	
YEAR OF OCCURRENCE		2002	1998	1996	2003	1996	2004	1998	2004	2004	1999	2001	1997	AUG 2004	
PRECIPITATION	NORMAL (IN)	30	3.13	2.74	3.84	2.54	3.26	5.69	5.17	6.09	6.61	4.48	3.03	2.71	49.29
	MAXIMUM MONTHLY (IN)	61	7.16	9.13	12.15	7.12	12.33	15.19	14.58	19.89	16.46	13.00	12.91	11.98	19.89
	YEAR OF OCCURRENCE		1986	1960	1996	1949	1976	1966	1944	1953	2004	1950	1994	1983	AUG 1953
	MINIMUM MONTHLY (IN)	61	0.15	0.29	0.25	T	0.08	0.83	0.16	2.01	0.42	0.19	T	0.06	T
	YEAR OF OCCURRENCE		1950	1944	1956	1967	1965	1998	1992	1963	1972	1967	1967	1956	NOV 1967
	MAXIMUM IN 24 HOURS (IN)	61	5.73	4.39	7.45	4.03	4.22	6.28	4.21	7.98	9.02	9.29	10.15	5.22	10.15
	YEAR OF OCCURRENCE		1989	1971	2000	1982	1947	1966	1986	2004	2004	1953	1994	1983	NOV 1994
	NORMAL NO. DAYS WITH: PRECIPITATION ≥ 0.01	30	7.9	7.5	7.7	5.6	8.2	12.9	12.4	13.8	13.2	10.5	7.8	7.8	115.3
PRECIPITATION ≥ 1.00	30	0.8	0.8	1.4	0.8	0.8	1.5	1.4	1.8	2.5	1.4	0.6	0.8	14.6	
SNOWFALL	NORMAL (IN)	30	0.*	0.0	0.0	0.0	0.0	0.0	0.0	0.0	0.0	0.0	0.0	0.*	0.0
	MAXIMUM MONTHLY (IN)	53	T	T	T	0.0	0.0	T	0.0	T	0.0	0.0	0.0	T	T
	YEAR OF OCCURRENCE		1977	1951	1993			1989		1994				1989	AUG 1994
	MAXIMUM IN 24 HOURS (IN)	53	T	T	T	0.0	0.0	T	0.0	T	0.0	0.0	0.0	T	T
	YEAR OF OCCURRENCE		1977	1951	1993			1989		1994				1989	AUG 1994
	MAXIMUM SNOW DEPTH (IN)	48	0	0	0	0	0	0	0	0	0	0	0	0	0
YEAR OF OCCURRENCE															
NORMAL NO. DAYS WITH: SNOWFALL ≥ 1.0	30	0.0	0.0	0.0	0.0	0.0	0.0	0.0	0.0	0.0	0.0	0.0	0.0	0.0	

PRECIPITATION (inches) 2004 DAYTONA BEACH, FL (DAB)

YEAR	JAN	FEB	MAR	APR	MAY	JUN	JUL	AUG	SEP	OCT	NOV	DEC	ANNUAL
1975	1.66	2.27	1.52	2.96	2.99	9.00	6.89	3.16	6.61	5.84	1.46	0.83	45.19
1976	0.60	0.70	2.03	4.27	12.33	11.14	1.07	3.80	5.10	1.90	3.38	6.00	52.32
1977	4.69	2.45	1.43	0.41	4.61	1.15	2.23	7.91	6.55	1.46	3.04	4.74	40.67
1978	2.89	5.98	2.31	3.30	0.56	7.48	5.53	7.99	4.63	8.31	0.07	4.89	53.94
1979	7.10	1.94	4.08	3.96	6.13	3.03	11.69	5.24	15.20	2.13	7.96	0.56	69.02
1980	3.75	0.76	2.41	2.54	3.62	5.57	5.82	4.13	1.83	2.42	3.12	1.39	37.36
1981	0.32	5.54	3.00	0.29	1.74	1.03	4.69	7.19	7.59	1.08	2.57	4.64	39.68
1982	2.46	2.08	5.81	6.04	4.68	8.29	5.31	3.21	4.96	3.23	1.58	2.53	50.18
1983	2.51	5.96	7.71	6.17	3.86	6.37	1.92	6.82	8.57	10.11	2.01	11.98	73.99
1984	1.46	3.44	1.31	5.29	6.04	2.84	6.77	4.02	10.73	1.09	3.52	0.20	46.71
1985	0.79	0.58	1.49	3.14	3.42	6.81	2.16	9.83	10.62	4.08	0.41	2.05	45.38
1986	7.16	1.28	1.85	0.44	0.99	3.50	14.43	3.47	3.58	3.47	5.08	2.76	48.01
1987	2.21	6.64	7.94	0.28	2.65	3.81	2.78	4.89	5.63	2.77	5.87	0.25	45.72
1988	5.36	1.72	4.57	1.68	1.78	2.39	2.94	4.79	6.81	1.24	6.70	0.93	40.91
1989	6.82	0.64	2.01	2.92	2.02	1.84	2.44	4.47	5.04	11.64	0.88	3.93	44.65
1990	1.42	5.61	1.94	1.48	1.45	2.71	5.85	7.00	1.61	5.88	0.83	0.34	36.12
1991	2.25	1.65	8.11	5.57	6.79	12.67	11.97	7.60	5.52	2.94	0.61	1.51	67.19
1992	2.42	1.71	2.28	2.81	3.13	10.64	0.16	8.86	6.57	5.21	2.15	0.47	46.41
1993	4.29	3.02	5.56	0.33	0.65	2.19	5.05	2.66	2.74	5.53	1.83	1.86	35.71
1994	5.60	2.66	3.44	5.05	3.09	6.54	6.91	7.08	5.93	4.72	12.91	2.71	66.64
1995	1.53	1.39	2.01	1.34	1.26	6.60	6.59	10.71	14.13	3.99	1.44	3.44	54.43
1996	5.53	1.32	12.15	2.22	2.28	11.35	1.90	5.70	3.92	11.15	0.96	2.01	60.49
1997	2.03	0.46	2.30	3.30	3.77	6.38	7.69	7.91	4.78	5.29	3.02	7.76	54.69
1998	4.33	7.25	3.97	0.14	0.16	0.83	5.63	7.56	5.79	1.84	1.66	1.35	40.51
1999	4.88	1.81	1.01	1.48	1.47	8.54	4.03	3.58	7.05	7.84	3.12	1.56	46.37
2000	1.80	0.65	8.48	1.15	0.32	3.08	5.09	3.17	13.55	0.93	1.14	0.80	40.16
2001	0.88	0.38	9.98	0.28	1.77	5.26	9.55	3.57	16.11	3.22	6.92	0.35	58.27
2002	2.01	2.76	1.51	2.53	1.66	12.30	7.35	11.56	3.86	2.94	1.85	9.61	59.94
2003	0.51	5.17	10.57	0.81	0.96	7.05	7.30	6.55	4.15	7.95	4.75	1.53	57.30
2004	1.25	4.47	1.10	1.19	0.49	5.20	10.34	17.96	16.46	1.34	0.93	2.24	62.97
POR= 70 YRS	2.47	2.94	3.61	2.42	2.86	6.12	6.18	6.48	7.02	4.81	2.64	2.42	49.97

WBAN : 12834

AVERAGE TEMPERATURE (°F) 2004 DAYTONA BEACH, FL (DAB)

YEAR	JAN	FEB	MAR	APR	MAY	JUN	JUL	AUG	SEP	OCT	NOV	DEC	ANNUAL
1975	63.6	65.7	65.6	70.1	77.2	79.5	80.5	80.5	79.6	75.2	66.8	58.6	71.9
1976	54.4	61.1	68.1	67.7	73.3	77.4	80.9	80.0	78.3	70.4	60.5	59.4	69.3
1977	50.6	55.5	68.9	70.0	74.8	82.3	82.6	82.6	80.8	70.8	67.1	58.3	70.4
1978	53.9	52.1	62.3	71.3	77.3	81.5	82.7	82.3	80.7	74.2	71.1	65.6	71.3
1979	56.7	57.1	64.4	72.3	75.5	78.7	82.1	80.0	80.2	72.9	66.1	59.6	70.5
1980	57.7	55.3	66.3	68.8	74.9	79.2	82.8	82.1	80.3	72.7	65.3	57.0	70.2
1981	48.8	59.2	60.4	70.5	73.5	82.0	82.8	81.5	77.7	73.8	62.7	57.1	69.2
1982	56.6	64.4	66.8	69.4	72.6	79.5	80.0	79.9	77.9	71.5	68.8	64.0	71.0
1983	53.9	57.2	60.2	64.3	72.4	77.0	81.7	81.1	77.8	73.5	62.6	58.1	68.3
1984	55.1	58.0	61.8	66.8	72.4	76.3	79.0	81.4	79.5	75.7	66.5	65.2	69.8
1985	53.7	61.0	66.6	69.4	76.1	81.7	80.6	81.4	78.3	76.8	71.2	56.1	71.1
1986	56.7	62.4	63.1	66.3	73.8	79.9	81.4	81.4	79.6	75.3	72.5	64.7	71.4
1987	55.8	59.7	63.3	65.1	74.3	79.7	81.9	82.3	79.6	70.0	66.5	61.9	70.0
1988	55.1	56.8	62.8	69.1	72.6	79.0	81.2	81.5	80.6	70.7	67.5	59.8	69.7
1989	64.8	61.9	67.8	69.5	75.4	80.3	82.7	81.8	80.5	73.4	65.9	53.3	71.4
1990	62.7	67.5	66.4	69.6	77.3	80.7	81.9	81.9	80.5	76.0	67.4	65.1	73.1
1991	63.4	61.9	65.6	73.7	78.5	80.3	82.5	82.4	80.8	73.8	64.4	63.5	72.6
1992	56.5	61.7	63.3	67.2	72.5	80.5	83.4	80.7	79.8	72.3	69.1	61.4	70.7
1993	64.5	57.5	62.9	65.5	72.7	80.0	82.5	81.9	79.6	73.7	66.9	56.4	70.3
1994	58.1	63.8	65.8	72.3	75.0	80.2	80.5	79.9	78.2	74.9	70.1	62.9	71.8
1995	56.5	58.7	66.0	70.3	79.0	79.0	81.2	81.3	79.5	76.4	62.8	58.1	70.7
1996	56.8	59.2	60.7	66.7	75.6	78.2	81.2	79.5	78.9	72.9	66.2	60.8	69.7
1997	59.0	64.7	69.9	67.8	74.0	78.4	81.6	81.5	79.3	73.2	64.3	59.4	71.1
1998	60.6	60.2	61.2	69.9	76.6	84.5	83.5	82.4	80.7	76.5	70.8	66.0	72.7
1999	62.0	62.1	62.2	72.4	74.5	79.6	82.4	82.9	79.0	74.4	67.3	60.0	71.6
2000	59.0	59.7	67.4	68.2	76.3	79.5	81.4	81.0	80.5	71.6	63.2	56.6	70.4
2001	53.9	64.1	64.5	69.1	74.6	79.9	81.2	81.3	77.6	72.9	68.9	65.4	71.1
2002	60.1	59.9	66.8	73.5	76.4	78.9	81.6	81.1	81.4	76.7	64.1	57.7	71.5
2003	52.1	60.9	69.3	69.4	78.6	79.5	81.0	80.5	78.8	74.8	70.3	58.3	71.1
2004	58.0	59.9	65.3	66.8	75.5	81.4	81.7	82.1	81.6	74.7	68.8	58.8	71.2
POR= 70 YRS	58.2	59.8	64.6	69.4	74.8	79.4	81.0	80.9	79.3	73.5	66.0	60.1	70.6

HEATING DEGREE DAYS (base 65°F) 2004 DAYTONA BEACH, FL (DAB)

YEAR	JUL	AUG	SEP	OCT	NOV	DEC	JAN	FEB	MAR	APR	MAY	JUN	TOTAL
1975-76	0	0	0	0	102	222	334	143	34	16	0	0	851
1976-77	0	0	0	11	168	209	444	273	53	20	0	0	1178
1977-78	0	0	0	23	63	241	352	356	132	5	0	0	1172
1978-79	0	0	0	0	4	71	279	244	79	5	0	0	682
1979-80	0	0	0	0	75	183	234	297	84	16	0	0	889
1980-81	0	0	0	11	93	247	497	184	171	0	1	0	1204
1981-82	0	0	0	0	127	284	273	72	63	26	0	0	845
1982-83	0	0	0	24	21	125	345	220	167	74	2	0	978
1983-84	0	0	0	2	126	255	323	215	148	37	3	0	1109
1984-85	0	0	0	0	63	77	372	173	44	21	0	0	750
1985-86	0	0	0	0	24	303	261	119	141	30	0	0	878
1986-87	0	0	0	0	11	84	301	160	99	81	0	0	736
1987-88	0	0	0	10	74	146	316	259	120	23	0	0	948
1988-89	0	0	0	1	39	187	70	154	68	20	1	0	540
1989-90	0	0	0	31	59	369	120	47	37	14	0	0	677
1990-91	0	0	0	9	35	96	114	126	83	9	0	0	472
1991-92	0	0	0	0	110	114	264	139	106	43	15	0	791
1992-93	0	0	0	0	70	136	104	210	107	49	0	0	676
1993-94	0	0	0	12	62	281	230	100	70	10	0	0	765
1994-95	0	0	0	0	10	117	269	200	41	16	0	0	653
1995-96	0	0	0	3	135	239	272	212	197	55	0	0	1113
1996-97	0	0	0	11	62	155	204	80	12	23	1	0	548
1997-98	0	0	0	8	69	215	171	159	174	22	0	0	818
1998-99	0	0	0	0	10	88	141	126	105	17	6	0	493
1999-00	0	0	0	6	30	174	201	164	16	32	0	0	623
2000-01	0	0	0	6	118	293	355	87	88	26	0	0	973
2001-02	0	0	0	14	4	108	213	160	64	2	0	0	565
2002-03	0	0	0	0	110	235	389	148	25	30	0	0	937
2003-04	0	0	0	0	31	215	227	166	54	44	1	0	738
2004-	0	0	0	0	15	230							

WBAN : 12834

COOLING DEGREE DAYS (base 65°F) 2004 DAYTONA BEACH, FL (DAB)

YEAR	JAN	FEB	MAR	APR	MAY	JUN	JUL	AUG	SEP	OCT	NOV	DEC	ANNUAL
1975	71	95	118	191	386	441	488	487	445	325	163	29	3239
1976	12	36	136	104	264	378	497	471	406	186	39	40	2569
1977	4	12	181	177	310	527	553	554	478	212	131	41	3180
1978	14	0	56	198	388	499	553	543	477	295	192	94	3309
1979	26	28	68	231	332	419	538	471	462	252	111	23	2961
1980	12	21	131	135	315	435	559	538	467	258	109	5	2985
1981	0	25	37	172	269	516	559	521	385	282	65	47	2878
1982	19	61	127	166	240	440	472	470	392	234	141	97	2859
1983	6	6	28	57	238	369	521	504	391	270	62	46	2498
1984	22	20	55	96	238	345	442	515	441	338	114	91	2717
1985	29	67	101	160	348	506	490	511	405	373	217	35	3242
1986	13	50	89	79	280	452	516	515	444	324	246	82	3090
1987	20	17	52	92	297	449	530	543	442	171	125	58	2796
1988	17	27	62	155	242	425	509	518	474	185	121	32	2767
1989	71	74	162	162	331	468	553	530	474	299	94	11	3229
1990	55	124	85	161	385	478	531	528	470	355	114	107	3393
1991	71	45	113	278	426	465	548	548	480	278	98	74	3424
1992	8	51	60	118	256	472	577	492	448	231	196	35	2944
1993	95	7	48	71	245	456	551	534	446	289	126	23	2891
1994	23	73	101	237	318	466	487	468	402	315	170	57	3117
1995	12	29	81	182	442	426	507	511	441	365	74	32	3102
1996	24	50	72	114	338	402	505	459	427	262	106	29	2788
1997	26	77	170	113	283	405	522	519	436	269	55	47	2922
1998	42	29	64	176	369	592	581	546	479	363	191	124	3556
1999	54	47	26	249	307	442	548	561	429	304	106	29	3102
2000	21	18	98	134	355	440	514	503	471	216	71	40	2881
2001	19	69	82	156	305	455	511	512	383	263	129	126	3010
2002	66	23	126	263	361	423	523	506	499	370	89	15	3264
2003	0	39	168	168	427	438	503	489	420	311	197	15	3175
2004	17	24	73	106	330	497	522	535	505	308	134	45	3096

SNOWFALL (inches) 2004 DAYTONA BEACH, FL (DAB)

YEAR	JUL	AUG	SEP	OCT	NOV	DEC	JAN	FEB	MAR	APR	MAY	JUN	TOTAL
1975-76	0.0	0.0	0.0	0.0	0.0	0.0	0.0	0.0	0.0	0.0	0.0	0.0	0.0
1976-77	0.0	0.0	0.0	0.0	0.0	0.0	T	0.0	0.0	0.0	0.0	0.0	T
1977-78	0.0	0.0	0.0	0.0	0.0	0.0	0.0	0.0	0.0	0.0	0.0	0.0	0.0
1978-79	0.0	0.0	0.0	0.0	0.0	0.0	0.0	0.0	0.0	0.0	0.0	0.0	0.0
1979-80	0.0	0.0	0.0	0.0	0.0	0.0	0.0	0.0	0.0	0.0	0.0	0.0	0.0
1980-81	0.0	0.0	0.0	0.0	0.0	0.0	0.0	0.0	0.0	0.0	0.0	0.0	0.0
1981-82	0.0	0.0	0.0	0.0	0.0	0.0	0.0	0.0	0.0	0.0	0.0	0.0	0.0
1982-83	0.0	0.0	0.0	0.0	0.0	0.0	0.0	0.0	0.0	0.0	0.0	0.0	0.0
1983-84	0.0	0.0	0.0	0.0	0.0	0.0	0.0	0.0	0.0	0.0	0.0	0.0	0.0
1984-85	0.0	0.0	0.0	0.0	0.0	0.0	0.0	0.0	0.0	0.0	0.0	0.0	0.0
1985-86	0.0	0.0	0.0	0.0	0.0	0.0	0.0	0.0	0.0	0.0	0.0	0.0	0.0
1986-87	0.0	0.0	0.0	0.0	0.0	0.0	0.0	0.0	0.0	0.0	0.0	0.0	0.0
1987-88	0.0	0.0	0.0	0.0	0.0	0.0	0.0	0.0	0.0	0.0	0.0	0.0	0.0
1988-89	0.0	0.0	0.0	0.0	0.0	0.0	0.0	0.0	0.0	0.0	0.0	T	T
1989-90	0.0	0.0	0.0	0.0	0.0	T	0.0	0.0	0.0	0.0	0.0	0.0	T
1990-91	0.0	0.0	0.0	0.0	0.0	0.0	0.0	0.0	0.0	0.0	0.0	0.0	0.0
1991-92	0.0	0.0	0.0	0.0	0.0	0.0	0.0	0.0	0.0	0.0	0.0	0.0	0.0
1992-93	0.0	0.0	0.0	0.0	0.0	0.0	0.0	0.0	T	0.0	0.0	0.0	T
1993-94	0.0	0.0	0.0	0.0	0.0	0.0	0.0	0.0	0.0	0.0	0.0	0.0	0.0
1994-95	0.0	T	0.0	0.0	0.0	0.0	0.0	0.0	0.0	0.0	0.0	0.0	T
1995-96	0.0	0.0	0.0	0.0	0.0	0.0	0.0						
1996-97													
1997-98													
1998-99													
1999-00													
2000-01													
2001-02													
2002-03													
2003-04													
2004-													
POR= 52 YRS	0.0	T	0.0	0.0	0.0	T	T	T	T	0.0	0.0	T	T

WBAN : 12834

REFERENCE NOTES :

<p>PAGE 1: THE TEMPERATURE GRAPH SHOWS NORMAL MAXIMUM AND NORMAL MINIMUM DAILY TEMPERATURES (SOLID CURVES) AND THE ACTUAL DAILY HIGH AND LOW TEMPERATURES (VERTICAL BARS).</p> <p>PAGE 2 AND 3: H/C INDICATES HEATING AND COOLING DEGREE DAYS. RH INDICATES RELATIVE HUMIDITY W/O INDICATES WEATHER AND OBSTRUCTIONS S INDICATES SUNSHINE. PR INDICATES PRESSURE. CLOUDINESS ON PAGE 3 IS THE SUM OF THE CEILOMETER AND SATELLITE DATA NOT TO EXCEED EIGHT EIGHTHS(OKTAS).</p> <p>GENERAL: T INDICATES TRACE PRECIPITATION, AN AMOUNT GREATER THAN ZERO BUT LESS THAN THE LOWEST REPORTABLE VALUE. + INDICATES THE VALUE ALSO OCCURS ON EARLIER DATES. BLANK ENTRIES DENOTE MISSING OR UNREPORTED DATA. NORMALS ARE 30-YEAR AVERAGES (1971 - 2000). ASOS INDICATES AUTOMATED SURFACE OBSERVING SYSTEM. PM INDICATES THE LAST DAY OF THE PREVIOUS MONTH. POR (PERIOD OF RECORD) BEGINS WITH THE JANUARY DATA MONTH AND IS THE NUMBER OF YEARS USED TO COMPUTE THE MEAN. INDIVIDUAL MONTHS WITHIN THE POR MAY BE MISSING. WHEN THE POR FOR A NORMAL IS LESS THAN 30 YEARS, THE NORMAL IS PROVISIONAL AND IS BASED ON THE NUMBER OF YEARS INDICATED. 0.* OR * INDICATES THE VALUE OR MEAN-DAYS-WITH IS BETWEEN 0.00 AND 0.05. CLOUDINESS FOR ASOS STATIONS DIFFERS FROM THE NON-ASOS OBSERVATION TAKEN BY A HUMAN OBSERVER. ASOS STATION CLOUDINESS IS BASED ON TIME-AVERAGED CEILOMETER DATA FOR CLOUDS AT OR BELOW 12,000 FEET AND ON SATELLITE DATA FOR CLOUDS ABOVE 12,000 FEET. THE NUMBER OF DAYS WITH CLEAR, PARTLY CLOUDY, AND CLOUDY CONDITIONS FOR ASOS STATIONS IS THE SUM OF THE CEILOMETER AND SATELLITE DATA FOR THE SUNRISE TO SUNSET PERIOD.</p>	<p>GENERAL CONTINUED: CLEAR INDICATES 0 - 2 OKTAS, PARTLY CLOUDY INDICATES 3 - 6 OKTAS, AND CLOUDY INDICATES 7 OR 8 OKTAS. WHEN AT LEAST ONE OF THE ELEMENTS (CEILOMETER OR SATELLITE) IS MISSING, THE DAILY CLOUDINESS IS NOT COMPUTED. WIND DIRECTION IS RECORDED IN TENS OF DEGREES (2 DIGITS) CLOCKWISE FROM TRUE NORTH. "00" INDICATES CALM. "36" INDICATES TRUE NORTH. RESULTANT WIND IS THE VECTOR AVERAGE OF THE SPEED AND DIRECTION. AVERAGE TEMPERATURE IS THE SUM OF THE MEAN DAILY MAXIMUM AND MINIMUM TEMPERATURE DIVIDED BY 2. SNOWFALL DATA COMPRISE ALL FORMS OF FROZEN PRECIPITATION, INCLUDING HAIL. A HEATING (COOLING) DEGREE DAY IS THE DIFFERENCE BETWEEN THE AVERAGE DAILY TEMPERATURE AND 65° F. DRY BULB IS THE TEMPERATURE OF THE AMBIENT AIR. DEW POINT IS THE TEMPERATURE TO WHICH THE AIR MUST BE COOLED TO ACHIEVE 100 PERCENT RELATIVE HUMIDITY. WET BULB IS THE TEMPERATURE THE AIR WOULD HAVE IF THE MOISTURE CONTENT WAS INCREASED TO 100 PERCENT RELATIVE HUMIDITY.</p> <p>ON JULY 1, 1996, THE NATIONAL WEATHER SERVICE BEGAN USING THE "METAR" OBSERVATION CODE THAT WAS ALREADY EMPLOYED BY MOST OTHER NATIONS OF THE WORLD. THE MOST NOTICEABLE DIFFERENCE IN THIS ANNUAL PUBLICATION WILL BE THE CHANGE IN UNITS FROM TENTHS TO EIGHTS(OKTAS) FOR REPORTING THE AMOUNT OF SKY COVER.</p>
---	--

2004
DAYTONA BEACH,
FLORIDA (DAB)

Daytona Beach is located on the Atlantic Ocean. The Halifax River, part of the Florida Inland Waterway, runs through the city. The terrain in the area is flat and the soil is mostly sandy. Elevations in the area range from 3 to 15 feet above mean sea level near the ocean to about 31 feet at the airport and on a ridge running along the western city limits.

Nearness to the ocean results in a climate tempered by the effect of land and sea breezes. In the summer, while maximum temperatures reach 90 degrees or above during the late morning or early afternoon, the number of hours of 90 degrees or above is relatively small due to the beginning of the sea breeze near midday and the occurrence of local afternoon convective thunderstorms which lower the temperature to the comfortable 80s. Winters, although subject to invasions of cold air, are relatively mild due to the nearness of the ocean and latitudinal location.

The rainy season from June through mid-October produces 60 percent of the annual rainfall. The major portion of the summer rainfall occurs in the form of local convective thunderstorms which are occasionally heavy and produce as much as 2 or 3 inches of rain. The more severe thunderstorms may be attended by strong gusty winds. Almost all rainfall during the winter months is associated with frontal passages.

Long periods of cloudiness and rain are infrequent, usually not lasting over 2 or 3 days. These periods are usually associated with a stationary front, a so-called northeaster, or a tropical disturbance.

Tropical disturbances or hurricanes are not considered a great threat to this area of the state. Generally hurricanes in this latitude tend to pass well offshore or lose much of their intensity while crossing the state before reaching this area. Only in gusts have hurricane-force winds been recorded at this station.

Heavy fog occurs mostly during the winter and early spring. These fogs usually form by radiational cooling at night and dissipate soon after sunrise. On rare occasions sea fog moves in from the ocean and persists for two or three days. There is no significant source in the area for air pollution.

STATION LOCATION

DAYTONA BEACH, FLORIDA

LOCATION	Occupied From	Occupied To	Airline Distances and Directions from previous Location	LATITUDE NORTH	LONGITUDE WEST	ELEVATION ABOVE										AUTOMATIC OBSERVING EQUIPMENT *	* TYPE M = AMOS T = AUTOB S = ASOS W = AWOS REMARKS
						SEA LEVEL		GROUND									
						GROUND	TEMPERATURE	WIND INSTRUMENT	EXTREME THERMOMETERS	PSYCHROMETER	SUNSHINE SWITCH	TIPPING BUCKET	RAIN GAUGE	WINDHOLE GAUGE	8 INCH RAIN GAUGE		
*NOTE:																	
<u>AIRPORT</u>																	
New Tower Building Municipal Airport + Regional Airport effective 10/1/69	3/28/59	11/14/70	50 ft. SE	29°11'	81°03'	31	23	5	5				5	b4	4	a5	a. Telepsychrometer (4') 3/28/59-9/1/59. Hygro. comm. 467' ESE inst. shelter 9/1/59. b. Effective 5/13/65.
Building #18 Regional Airport	12/14/70	6/7/79	360 ft. SW	29°11'	81°03'	31	c23	5	5			d4	4	4		c5	c. Not moved 12/14/70. d. Installed 8/15/77.
1580 Bellevue Ave. Regional Airport	6/7/79	06/01/95	0.6 mi. SE	29°11'	81°03'	29	e23 f30	5	5		5	5				e5 f5 g5	e. Not moved 6/7/79. f. Moved 6/22/79 g. Type change 8/28/85.
International Airport	06/01/95	Present	NA	29°11'	81°04'	h31										S	ASOS Commissioned 06/01/95 h. Ground Elevation

For Hard Copy Subscription:

Price and ordering information: NCDC Subscribing Service Center, 310 State Route 956, Building 300, Rocket Center, WV 26726.

INQUIRIES/COMMENTS CALL: Toll Free (866) 742-3322

Visit our Web Site for other weather data: www.ncdc.noaa.gov

Non-Subscription Request:

NCDC Customer Services;
Phone: 828-271-4800
Fax: 828-271-4876
Email: ncdc.orders@noaa.gov

OFFICIAL BUSINESS
PENALTY FOR PRIVATE USE \$300
CHANGE SERVICE REQUESTED

FIRST CLASS
POSTAGE & FEES PAID
United States Department of Commerce
NOAA Permit No. G - 19

* NOTES: For earlier station history see previous editions.