

2002

LOCAL CLIMATOLOGICAL DATA ANNUAL SUMMARY WITH COMPARATIVE DATA



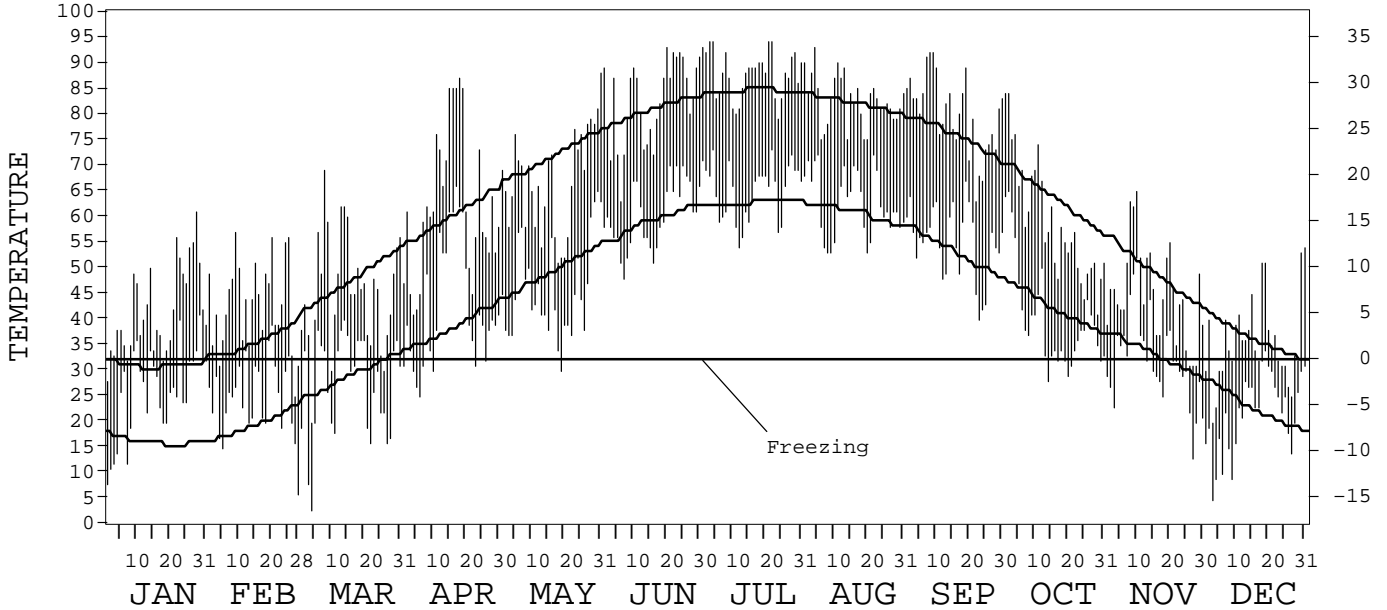
ISSN 0198-196X

FORT WAYNE, INDIANA (FWA)

Daily Data

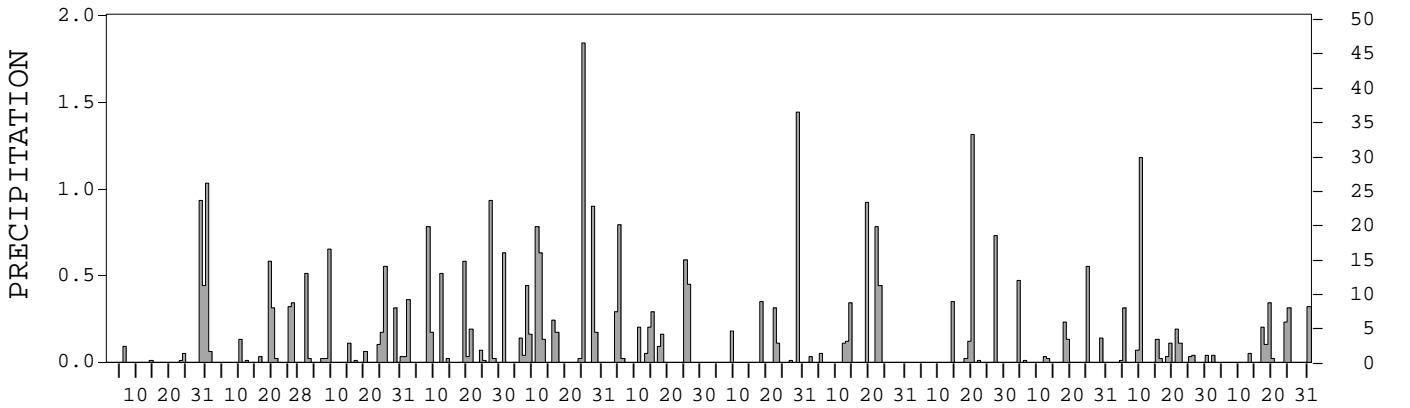
Fahrenheit

Celsius



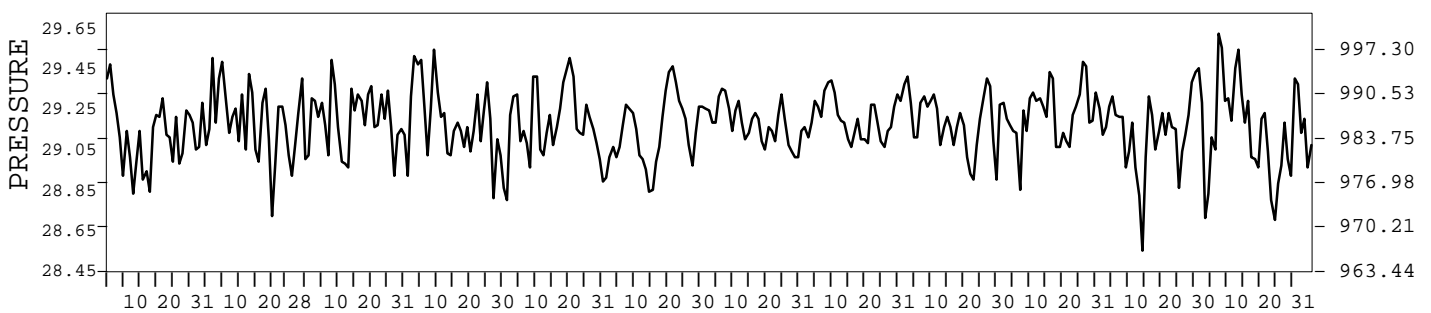
Inches

Millimeters



Inches of Mercury

Hectopascals



I CERTIFY THAT THIS IS AN OFFICIAL PUBLICATION OF THE NATIONAL OCEANIC AND ATMOSPHERIC ADMINISTRATION, AND IS COMPILED FROM RECORDS ON FILE AT THE NATIONAL CLIMATIC DATA CENTER.

NATIONAL OCEANIC AND ATMOSPHERIC ADMINISTRATION

NATIONAL ENVIRONMENTAL SATELLITE, DATA, AND INFORMATION SERVICE

NATIONAL CLIMATIC DATA CENTER ASHEVILLE, NORTH CAROLINA

DIRECTOR NATIONAL CLIMATIC DATA CENTER

METEOROLOGICAL DATA FOR 2002

FORT WAYNE, IN (FWA)

LATITUDE: 41° 00' 22" N LONGITUDE: 85° 12' 20" W ELEVATION (FT): GRND: 803 BARO: 806 TIME ZONE: EASTERN (UTC + 5) WBAN: 14827

ELEMENT		JAN	FEB	MAR	APR	MAY	JUN	JUL	AUG	SEP	OCT	NOV	DEC	YEAR	
TEMPERATURE °F	MEAN DAILY MAXIMUM	41.9	42.9	45.6	62.1	67.1	82.4	87.9	82.6	80.0	59.1	45.1	35.8	61.0	
	HIGHEST DAILY MAXIMUM	61	57	69	87	88	93	94	93	92	84	65	54	94	
	DATE OF OCCURRENCE	28	09	08	18	31	20	22+	04	09+	02+	10	31	JUL 22+	
	MEAN DAILY MINIMUM	26.1	24.9	27.2	42.3	45.8	60.2	65.1	62.6	55.0	40.1	32.0	21.8	41.9	
	LOWEST DAILY MINIMUM	8	6	3	25	30	48	54	53	40	28	13	5	3	
	DATE OF OCCURRENCE	01	28	04	06	19	07	12	20+	23	14	27	03	MAR 04	
	AVERAGE DRY BULB	34.0	33.9	36.4	52.2	56.5	71.3	76.5	72.6	67.5	49.6	38.6	28.8	51.5	
	MEAN WET BULB	30.3	30.3	33.0	47.4	52.0	65.2	69.4	67.3	61.1	45.8	35.9	27.0	47.1	
	MEAN DEW POINT	25.1	24.4	27.8	42.5	47.8	61.5	65.3	64.1	57.0	41.3	31.9	22.8	42.6	
	NUMBER OF DAYS WITH:														
	MAXIMUM ≥ 90°	0	0	0	0	0	6	12	3	3	0	0	0	0	24
	MAXIMUM ≤ 32°	3	3	3	0	0	0	0	0	0	0	3	13	25	
	MINIMUM ≤ 32°	25	24	18	8	1	0	0	0	0	6	18	30	130	
MINIMUM ≤ 0°	0	0	0	0	0	0	0	0	0	0	0	0	0		
H/C	HEATING DEGREE DAYS	954	862	878	423	285	17	0	1	45	493	784	1112	5854	
	COOLING DEGREE DAYS	0	0	0	45	30	214	364	246	125	23	0	0	1047	
RH	MEAN (PERCENT)	74	70	73	72	75	73	70	77	74	75	79	79	74	
	HOUR 01 LST	77	77	78	81	83	86	82	89	88	86	83	83	83	
	HOUR 07 LST	82	78	81	82	84	87	85	92	93	89	85	84	85	
	HOUR 13 LST	63	61	65	60	64	59	55	60	54	58	71	69	62	
	HOUR 19 LST	72	69	69	66	67	62	59	68	65	68	79	79	69	
S	PERCENT POSSIBLE SUNSHINE														
W/O	NUMBER OF DAYS WITH:														
	HEAVY FOG (VISBY ≤ 1/4 MI)	3	1	4	1	2	1	1	1	0	2	0	4	20	
	THUNDERSTORMS	0	1	1	3	7	9	5	6	4	0	1	0	37	
CLOUDINESS	SUNRISE-SUNSET: (OKTAS)														
	CEILOMETER (≤ 12,000 FT.)														
	SATELLITE (> 12,000 FT.)														
	MIDNIGHT-MIDNIGHT: (OKTAS)														
	CEILOMETER (≤ 12,000 FT.)														
SATELLITE (> 12,000 FT.)															
NUMBER OF DAYS WITH:															
CLEAR															
PARTLY CLOUDY															
CLOUDY															
PR	MEAN STATION PRESS. (IN.)	29.12	29.19	29.20	29.19	29.17	29.14	29.18	29.21	29.18	29.22	29.11	29.16	29.17	
	MEAN SEA-LEVEL PRESS. (IN.)	30.03	30.10	30.11		30.06	30.01	30.05	30.09	30.06	30.11	30.02	30.07		
WINDS	RESULTANT SPEED (MPH)	7.4	8.2	3.3	3.5	1.5	1.5	3.7	1.4	1.1	0.9	6.7	4.4	3.4	
	RES. DIR. (TENS OF DEGS.)	25	26	26	25	29	27	24	18	23	35	26	26	26	
	MEAN SPEED (MPH)	10.7	11.6	12.1	10.4	9.4	7.1	7.6	7.5	6.1	8.2	11.3	11.6	9.5	
	PREVAIL. DIR. (TENS OF DEGS.)	23	27	28	31	22	23	24	08	19	08	23	24	23	
	MAXIMUM 2-MINUTE WIND:														
	SPEED (MPH)	30	40	51	40	36	36	39	30	29	29	37	32	51	
	DIR. (TENS OF DEGS.)	24	23	27	28	27	29	28	26	23	29	26	27	27	
	DATE OF OCCURRENCE	04	20	09	25	25	04	29	13	19	04	29	20	MAR 09	
	MAXIMUM 5-SECOND WIND:														
	SPEED (MPH)	36	54	60	49	44	49	48	39	38	38	45	41	60	
DIR. (TENS OF DEGS.)	24	24	28	26	27	29	27	25	23	28	26	25	28		
DATE OF OCCURRENCE	04	20	09	25	25	04	29	13	19	04	29	20	MAR 09		
PRECIPITATION	WATER EQUIVALENT:														
	TOTAL (IN.)	2.56	1.80	2.56	3.70	6.29	3.13	2.40	2.79	2.54	1.58	2.27	1.61	33.23	
	GREATEST 24-HOUR (IN.)	1.17	0.68	0.65	0.95	1.86	1.05	1.44	1.22	1.42	0.55	1.25	0.54	1.86	
	DATE OF OCCURRENCE	29-30	19-20	09	27-28+	24-25	04-05	29	22-23	19-20	25	09-10	24-25	MAY 24-25	
	NUMBER OF DAYS WITH:														
	PRECIPITATION ≥ 0.01	7	9	13	13	14	11	6	8	6	8	13	9	117	
PRECIPITATION ≥ 0.10	3	5	7	7	12	8	5	6	4	5	6	6	74		
PRECIPITATION ≥ 1.00	1	0	0	0	1	0	1	0	1	0	1	0	5		
SNOWFALL	SNOW, ICE PELLETS, HAIL:														
	TOTAL (IN.)	1.5	6.0	7.3	T	0.0	T	0.0	0.0	0.0	T	3.1	9.4	27.3	
	GREATEST 24-HOUR (IN.)	1.2	3.6	3.3	T	0.0	T	0.0	0.0	0.0	T	0.7	8.2	8.2	
	DATE OF OCCURRENCE	06	26	26	05+	0	04	0	0	0	30+	22	24-25	DEC 24-25	
	MAXIMUM SNOW DEPTH (IN.)	1	4	6	0	0	0	0	0	0	0	1	7	7	
	DATE OF OCCURRENCE	07	27+	27								22+	26	DEC 26	
	NUMBER OF DAYS WITH:														
SNOWFALL ≥ 1.0	1	2	2	0	0	0	0	0	0	0	0	2	7		

NORMALS, MEANS, AND EXTREMES

FORT WAYNE, IN (FWA)

LATITUDE: 41° 00' 22" N LONGITUDE: 85° 12' 20" W ELEVATION (FT): GRND: 803 BARO: 806 TIME ZONE: EASTERN (UTC + 5) WBAN: 14827

ELEMENT		POR	JAN	FEB	MAR	APR	MAY	JUN	JUL	AUG	SEP	OCT	NOV	DEC	YEAR
TEMPERATURE °F	NORMAL DAILY MAXIMUM	30	31.0	35.4	47.4	59.8	71.6	80.6	84.3	81.8	75.4	63.0	48.5	35.8	59.6
	MEAN DAILY MAXIMUM	55	31.8	35.7	46.2	59.8	71.2	80.8	84.3	82.4	75.9	63.8	48.6	36.2	59.7
	HIGHEST DAILY MAXIMUM	56	69	73	82	88	94	106	103	101	100	90	79	71	106
	YEAR OF OCCURRENCE		1950	2000	1986	1986	1988	1988	1954	1962	1953	1951	1950	1982	JUN 1988
	MEAN OF EXTREME MAXS.	55	52.7	56.5	70.5	80.1	86.5	92.7	94.1	92.2	89.4	81.0	68.4	57.0	76.8
	NORMAL DAILY MINIMUM	30	16.1	19.2	28.8	38.2	49.1	58.8	62.5	60.4	52.8	41.8	32.7	22.3	40.2
	MEAN DAILY MINIMUM	55	16.9	19.8	28.2	38.7	49.1	59.0	63.0	60.7	53.0	42.2	32.4	22.1	40.4
	LOWEST DAILY MINIMUM	56	-22	-18	-10	7	27	38	44	38	29	19	-1	-18	-22
	YEAR OF OCCURRENCE		1985	1982	1967	1982	1966	1993	1967	1965	1995	1988	1958	1989	JAN 1985
	MEAN OF EXTREME MINS.	55	-5.1	-1.7	9.4	23.1	34.4	45.3	51.3	48.5	37.3	27.2	16.9	1.1	24.0
	NORMAL DRY BULB	30	22.9	25.9	37.6	49.2	60.2	70.2	74.0	71.6	64.9	52.9	41.3	28.6	49.9
	MEAN DRY BULB	55	24.4	27.8	37.2	49.4	60.2	70.0	73.8	71.5	64.6	53.0	40.6	29.1	50.1
	MEAN WET BULB	18	24.3	27.7	34.4	44.7	54.5	63.3	67.2	65.9	58.4	48.0	37.9	26.4	46.1
	MEAN DEW POINT	18	20.5	23.5	29.0	38.6	48.8	58.6	63.6	62.8	54.5	43.4	33.9	23.1	41.7
	NORMAL NO. DAYS WITH:														
	MAXIMUM ≥ 90°	30	0.0	0.0	0.0	0.0	0.6	3.5	6.1	3.6	1.1	0.0	0.0	0.0	14.9
MAXIMUM ≤ 32°	30	16.8	12.2	3.8	0.1	0.0	0.0	0.0	0.0	0.0	0.0	1.5	12.0	46.4	
MINIMUM ≤ 32°	30	28.6	24.6	20.3	8.6	0.8	0.0	0.0	0.0	0.1	5.0	15.8	26.0	129.8	
MINIMUM ≤ 0°	30	5.3	3.3	0.3	0.0	0.0	0.0	0.0	0.0	0.0	0.0	0.0	2.3	11.2	
H/C	NORMAL HEATING DEG. DAYS	30	1275	1063	835	479	188	29	3	11	105	394	722	1101	6205
	NORMAL COOLING DEG. DAYS	30	0	0	1	7	53	183	278	212	88	8	0	0	830
RH	NORMAL (PERCENT)	30	76	74	72	66	66	66	69	73	73	72	76	79	72
	HOUR 01 LST	30	78	78	77	74	75	77	81	85	84	80	80	81	79
	HOUR 07 LST	30	80	80	80	78	78	79	84	88	88	84	83	82	82
	HOUR 13 LST	30	71	69	64	56	54	54	55	58	58	58	68	74	62
	HOUR 19 LST	30	75	72	67	58	56	56	58	63	65	67	75	78	66
S	PERCENT POSSIBLE SUNSHINE	52	46	51	55	60	68	74	75	74	68	62	41	38	59
W/O	MEAN NO. DAYS WITH:														
	HEAVY FOG (VISBY ≤ 1/4 MI)	56	2.8	2.5	1.8	0.9	0.9	0.7	1.0	1.9	1.6	1.7	1.5	2.7	20.0
	THUNDERSTORMS	56	0.4	0.7	2.3	4.2	5.1	7.1	6.7	5.7	3.5	1.8	1.0	0.3	38.8
CLOUDINESS	MEAN:														
	SUNRISE-SUNSET (OKTAS)	50	6.0	5.8	5.8	5.6	5.1	4.9	4.5	4.5	4.5	4.6	5.8	6.1	5.3
	MIDNIGHT-MIDNIGHT (OKTAS)	32	5.8	5.5	5.5	5.2	4.8	4.7	4.2	4.2	4.3	4.5	5.7	5.9	5.0
	MEAN NO. DAYS WITH:														
CLEAR	1	3.0	3.0	7.0	2.0	2.0	5.0								
PARTLY CLOUDY	1	3.0	5.0	8.0	6.0	8.0	9.0								
CLOUDY	1	25.0	21.0	16.0	22.0	21.0	16.0								
PR	MEAN STATION PRESSURE (IN)	30	29.20	29.19	29.11	29.10	29.10	29.10	29.10	29.20	29.20	29.20	29.20	29.21	29.16
	MEAN SEA-LEVEL PRES. (IN)	19	30.11	30.11	30.07	29.97	30.00	30.01	30.01	30.05	30.08	30.11	30.09	30.14	30.06
WINDS	MEAN SPEED (MPH)	45	11.4	10.9	11.9	11.6	10.1	8.8	8.0	7.3	8.1	9.2	11.0	11.0	9.9
	PREVAIL. DIR (TENS OF DEGS)	29	26	27	27	08	22	23	23	23	22	23	23	27	23
	MAXIMUM 2-MINUTE:														
	SPEED (MPH)	6	40	44	51	46	47	49	51	35	38	39	46	43	51
	DIR. (TENS OF DEGS)		26	28	27	25	28	27	28	01	25	27	23	29	27
	YEAR OF OCCURRENCE		1999	2001	2002	1997	2000	2000	1998	2001	1997	2001	1998	1998	MAR 2002
MAXIMUM 5-SECOND:															
SPEED (MPH)	6	47	54	60	56	61	59	69	44	48	49	54	54	69	
DIR. (TENS OF DEGS)		27	24	28	26	29	27	29	02	18	27	23	32	29	
YEAR OF OCCURRENCE		1999	2002	2002	1997	2000	2000	1998	2001	2000	2001	1998	1998	JUL 1998	
PRECIPITATION	NORMAL (IN)	30	2.05	1.94	2.86	3.54	3.75	4.04	3.58	3.60	2.81	2.63	2.98	2.77	36.55
	MAXIMUM MONTHLY (IN)	56	9.72	6.84	5.29	7.11	8.80	8.55	11.00	7.69	6.75	9.26	8.01	7.56	11.00
	YEAR OF OCCURRENCE		1950	1990	1955	1957	1991	2000	1986	1975	1972	1954	1992	1990	JUL 1986
	MINIMUM MONTHLY (IN)	56	0.39	0.30	0.48	1.04	1.04	0.77	0.41	0.42	0.34	0.14	0.62	0.42	0.14
	YEAR OF OCCURRENCE		1966	1978	2001	1997	1977	1988	1974	1969	1979	1964	1976	1962	OCT 1964
	MAXIMUM IN 24 HOURS (IN)	56	2.64	3.03	2.15	2.65	4.35	4.40	3.58	4.05	4.60	2.96	2.50	2.49	4.60
	YEAR OF OCCURRENCE		1950	1990	1953	1963	1991	1989	1996	1957	1950	1947	1982	1990	SEP 1950
	NORMAL NO. DAYS WITH:														
PRECIPITATION ≥ 0.01	30	11.5	10.3	13.1	13.2	11.1	9.9	9.8	9.4	9.2	9.4	11.0	13.1	131.0	
PRECIPITATION ≥ 1.00	30	0.2	0.2	0.4	0.4	0.8	0.8	0.8	1.1	0.6	0.5	0.3	0.5	6.6	
SNOWFALL	NORMAL (IN)	30	9.9	7.6	4.7	1.1	0.*	0.0	0.0	0.0	0.0	0.5	3.0	8.3	35.1
	MAXIMUM MONTHLY (IN)	56	29.5	16.9	19.5	11.7	T	T	T	T	0.0	8.0	14.1	20.3	29.5
	YEAR OF OCCURRENCE		1982	1980	1964	1961	1996	1992	2001	1989	1989	1950	1973	1973	JAN 1982
	MAXIMUM IN 24 HOURS (IN)	56	10.8	7.7	13.6	6.4	T	T	T	T	0.0	6.5	7.0	11.1	13.6
	YEAR OF OCCURRENCE		1982	1952	1964	1957	1996	1992	2001	1989	1989	1950	1973	1973	MAR 1964
	MAXIMUM SNOW DEPTH (IN)	54	17	20	11	6	0	0	0	0	0	3	9	15	20
	YEAR OF OCCURRENCE		1978	1982	1978	1994					1989	1950	1977	1977	FEB 1982
NORMAL NO. DAYS WITH:															
SNOWFALL ≥ 1.0	30	2.9	2.3	1.4	0.3	0.0	0.0	0.0	0.0	0.0	0.1	0.9	2.5	10.4	

PRECIPITATION (inches) 2002 FORT WAYNE, IN (FWA)

YEAR	JAN	FEB	MAR	APR	MAY	JUN	JUL	AUG	SEP	OCT	NOV	DEC	ANNUAL
1973	1.57	1.31	4.63	2.16	2.19	4.46	3.37	3.75	0.70	3.06	3.39	3.94	34.53
1974	3.25	2.14	2.91	3.44	5.09	2.28	0.41	3.70	2.22	1.29	2.22	2.57	31.52
1975	2.41	2.05	2.03	3.39	2.77	4.40	0.79	7.69	3.48	1.70	3.17	2.85	36.73
1976	1.82	2.30	3.48	2.03	2.18	3.87	3.19	1.54	2.20	2.49	0.62	0.57	26.29
1977	0.50	2.15	4.50	4.01	1.04	3.79	3.99	7.26	3.68	2.11	2.39	2.83	38.25
1978	2.35	0.30	2.32	5.09	3.24	1.67	1.39	2.63	2.26	1.13	3.03	3.75	29.16
1979	1.64	1.04	3.13	2.17	2.64	3.19	4.76	3.49	0.34	2.16	3.87	2.55	30.98
1980	0.71	2.22	4.16	3.03	2.69	4.54	4.03	4.79	2.47	1.96	0.68	2.50	33.78
1981	0.60	2.89	0.74	5.34	4.42	7.96	2.92	1.71	3.34	3.42	1.09	3.18	37.61
1982	5.42	1.50	4.91	2.84	4.74	4.88	2.45	3.44	1.64	1.11	5.77	4.39	43.09
1983	0.98	0.71	1.84	4.83	4.14	2.15	2.36	1.67	1.34	3.58	4.17	4.34	32.11
1984	1.10	1.53	3.71	2.95	4.69	1.48	2.52	1.10	2.98	3.17	2.94	3.20	31.37
1985	2.03	3.58	3.76	1.69	2.16	2.56	1.86	5.15	2.67	2.44	5.41	2.77	36.08
1986	0.64	2.96	3.08	3.27	2.67	4.95	11.00	2.75	4.64	3.47	1.50	1.54	42.47
1987	2.07	0.53	1.34	2.16	3.41	5.41	2.90	6.08	1.35	1.81	3.73	3.46	34.25
1988	1.53	1.97	3.14	2.69	1.99	0.77	6.51	4.29	1.82	2.70	3.43	2.47	33.31
1989	1.99	1.08	1.40	3.39	4.82	5.78	2.48	4.93	4.17	2.05	2.05	1.18	35.32
1990	2.17	6.84	3.11	2.36	5.60	5.49	4.58	6.75	1.50	5.31	3.31	7.56	54.58
1991	1.82	1.28	2.80	5.06	8.80	2.08	3.39	3.15	2.17	8.94	3.24	2.07	44.80
1992	1.67	1.39	3.21	3.50	3.11	3.31	5.35	3.82	6.01	2.45	8.01	2.65	44.48
1993	5.24	1.82	3.64	4.31	3.93	6.09	3.72	1.71	4.85	1.19	4.11	1.49	42.10
1994	2.71	0.83	1.66	6.25	1.09	3.46	3.29	2.15	1.27	1.43	2.94	2.25	29.33
1995	2.35	0.83	2.16	5.03	4.12	5.25	2.15	2.55	0.44	3.35	2.21	1.23	31.67
1996	2.51	1.25	2.01	3.17	7.09	5.55	7.88	2.00	3.94	2.00	3.76	3.27	44.43
1997	2.22	3.75	3.32	1.04	6.30	4.07	5.53	4.06	5.11	0.97	2.82	1.73	40.92
1998	3.96	1.44	4.98	5.00	2.18	4.83	6.00	3.85	1.31	3.99	1.65	1.00	40.19
1999	2.78	2.51	1.19	6.37	3.94	1.07	1.07	3.10	1.03	2.32	1.00	1.95	28.33
2000	1.25	1.57	2.01	2.09	4.63	8.55	2.18	3.68	4.61	1.78	2.12	2.54	37.01
2001	0.74	2.73	0.48	3.59	2.56	4.26	6.70	4.56	4.04	7.40	2.30	2.40	41.76
2002	2.56	1.80	2.56	3.70	6.29	3.13	2.40	2.79	2.54	1.58	2.27	1.61	33.23
POR= 91 YRS	2.33	1.87	2.95	3.42	3.67	3.71	3.49	3.14	2.74	2.73	2.57	2.39	35.01

WBAN : 14827

AVERAGE TEMPERATURE (°F) 2002 FORT WAYNE, IN (FWA)

YEAR	JAN	FEB	MAR	APR	MAY	JUN	JUL	AUG	SEP	OCT	NOV	DEC	ANNUAL
1973	29.2	27.4	45.1	49.2	56.5	72.7	74.1	72.5	66.9	56.9	43.7	27.2	51.8
1974	25.9	25.9	38.8	50.8	58.0	67.0	75.2	72.0	60.5	51.2	40.9	29.7	49.7
1975	29.8	27.8	33.1	43.9	62.9	69.6	72.9	73.0	60.3	53.9	46.6	31.4	50.4
1976	21.6	35.2	43.6	52.1	57.9	71.2	72.9	69.0	62.0	47.4	33.5	22.1	49.0
1977	9.2	25.2	43.4	55.4	67.9	68.3	76.1	70.7	66.5	50.9	41.7	25.4	50.1
1978	16.1	11.8	30.9	48.6	59.5	69.7	72.8	71.9	69.3	51.0	41.9	31.0	47.9
1979	17.4	14.8	41.1	46.8	60.3	69.1	70.9	69.1	64.2	51.1	39.5	31.3	48.0
1980	24.7	20.1	32.5	46.1	59.9	66.5	75.2	74.1	66.2	50.5	39.0	29.6	48.7
1981	20.1	29.0	37.5	51.5	57.1	70.1	73.0	71.2	64.5	49.6	41.0	26.4	49.3
1982	15.3	21.3	35.4	44.4	66.4	65.6	73.8	69.1	62.6	54.2	43.7	39.2	49.3
1983	29.5	33.6	41.0	47.4	58.0	72.0	78.9	78.4	67.8	55.3	44.9	21.2	52.3
1984	19.5	33.5	28.5	47.4	56.8	73.6	71.8	73.4	63.4	58.5	41.5	35.9	50.3
1985	19.8	23.9	43.1	57.0	65.1	68.8	75.0	71.5	65.0	54.4	43.7	20.5	50.7
1986	26.2	25.6	40.1	51.6	61.7	69.1	74.9	67.9	67.1	53.9	37.2	31.1	50.5
1987	24.7	31.4	40.9	51.4	64.5	72.1	75.1	71.8	65.3	46.6	44.1	33.4	51.8
1988	23.6	23.6	38.5	49.8	64.3	73.3	77.1	74.7	64.5	45.9	41.9	28.7	50.5
1989	33.2	33.4	38.3	47.5	57.3	69.7	75.5	70.8	62.2	52.7	39.4	16.9	48.9
1990	34.8	34.1	42.1	49.8	57.6	69.5	71.9	69.9	64.7	52.7	45.3	32.4	52.1
1991	24.8	31.9	41.2	53.1	67.3	74.2	74.8	72.9	63.6	55.4	37.6	32.9	52.5
1992	28.6	34.0	38.1	47.6	59.2	65.9	71.1	67.6	62.5	50.9	40.9	31.6	49.8
1993	28.6	24.0	35.3	48.6	61.8	68.5	76.3	74.4	61.5	51.3	41.1	31.1	50.2
1994	18.9	25.6	39.1	52.5	59.5	73.8	73.2	68.7	65.6	55.1	45.6	35.9	51.1
1995	25.7	26.8	41.4	47.7	59.1	71.8	75.1	78.4	63.2	54.9	35.8	24.9	50.4
1996	23.3	28.5	33.4	47.0	58.2	71.4	70.3	71.5	63.2	53.2	34.0	30.2	48.7
1997	21.4	31.2	39.4	45.4	53.6	69.3	71.8	68.0	62.7	52.2	36.5	31.0	48.5
1998	33.3	37.4	39.7	50.4	66.4	69.8	71.6	71.8	67.5	54.0	43.4	34.6	53.3
1999	23.6	33.5	33.5	51.3	62.4	71.4	78.4	69.5	64.4	52.0	45.4	31.4	51.4
2000	22.5	33.6	43.8	49.0	62.3	68.6	71.2	71.0	62.7	55.8	39.0	17.5	49.8
2001	25.2	30.9	35.4	53.2	62.3	68.2	72.4	72.4	62.3	52.7	47.4	36.0	51.5
2002	34.0	33.9	36.4	52.2	56.5	71.3	76.5	72.6	67.5	49.6	38.6	28.8	51.5
POR= 91 YRS	25.1	27.8	37.1	48.9	59.9	69.7	74.0	71.8	64.7	53.3	40.6	29.2	50.2

HEATING DEGREE DAYS (base 65°F) 2002 FORT WAYNE, IN (FWA)

YEAR	JUL	AUG	SEP	OCT	NOV	DEC	JAN	FEB	MAR	APR	MAY	JUN	TOTAL
1973-74	0	7	62	266	635	1166	1206	1091	804	423	238	38	5936
1974-75	0	3	167	424	715	1086	1084	1035	981	628	135	48	6306
1975-76	8	4	173	346	546	1036	1338	856	656	404	225	1	5593
1976-77	0	11	121	540	938	1322	1723	1108	662	322	80	42	6869
1977-78	2	11	61	429	694	1218	1509	1482	1051	485	224	26	7192
1978-79	1	5	55	431	686	1050	1466	1401	731	542	198	26	6592
1979-80	8	31	94	440	756	1037	1240	1294	1001	561	190	65	6717
1980-81	0	0	64	454	772	1090	1385	1004	844	402	259	9	6283
1981-82	0	2	88	472	711	1185	1536	1216	908	608	51	50	6827
1982-83	0	17	124	345	632	795	1096	874	736	526	218	25	5388
1983-84	1	0	78	310	596	1352	1405	908	1125	524	272	0	6571
1984-85	4	1	128	204	699	894	1394	1144	673	281	86	23	5531
1985-86	0	3	124	319	632	1373	1197	1097	769	406	152	28	6100
1986-87	2	46	60	351	826	1043	1243	937	737	408	128	10	5791
1987-88	6	26	64	562	620	972	1277	1192	814	453	87	22	6095
1988-89	0	9	62	588	684	1118	978	1158	823	522	268	19	6229
1989-90	0	9	141	384	760	1488	928	858	712	479	231	29	6019
1990-91	2	7	113	389	587	1007	1240	920	730	355	100	1	5451
1991-92	0	0	162	308	816	985	1120	891	830	520	212	49	5893
1992-93	7	19	131	430	714	1028	1121	1141	914	484	128	51	6168
1993-94	0	4	140	425	710	1044	1424	1098	796	390	218	17	6266
1994-95	0	21	66	302	574	898	1211	1063	727	512	184	8	5566
1995-96	3	0	118	312	869	1237	1288	1050	974	541	254	11	6657
1996-97	6	0	118	360	924	1070	1345	940	789	580	345	35	6512
1997-98	7	18	103	427	847	1050	973	767	781	431	57	66	5527
1998-99	0	1	44	345	643	933	1278	876	971	405	120	28	5644
1999-00	0	5	97	397	582	1034	1310	903	649	475	141	40	5633
2000-01	1	4	137	287	774	1466	1226	951	912	366	126	65	6315
2001-02	10	0	120	378	522	892	954	862	878	423	285	17	5341
2002-	0	1	45	493	784	1112							

WBAN : 14827

COOLING DEGREE DAYS (base 65°F) 2002 FORT WAYNE, IN (FWA)

YEAR	JAN	FEB	MAR	APR	MAY	JUN	JUL	AUG	SEP	OCT	NOV	DEC	ANNUAL
1973	0	0	0	8	2	240	291	244	124	19	0	0	928
1974	0	0	0	6	27	106	322	225	39	2	0	0	727
1975	0	0	0	2	76	192	256	260	37	9	1	0	833
1976	0	0	0	26	9	193	254	140	38	4	0	0	664
1977	0	0	0	41	177	152	353	197	112	0	0	0	1032
1978	0	0	0	0	60	169	251	225	192	1	0	0	898
1979	0	0	0	4	58	156	198	167	78	16	0	0	677
1980	0	0	0	1	38	115	326	290	107	10	0	0	887
1981	0	0	0	3	21	168	258	202	79	0	0	0	731
1982	0	0	0	0	101	76	280	150	57	15	0	0	679
1983	0	0	0	4	10	241	436	418	168	16	0	0	1293
1984	0	0	0	5	24	266	223	270	88	10	0	0	886
1985	0	0	3	47	94	142	317	211	130	2	0	0	946
1986	0	0	3	12	55	159	316	143	130	13	0	0	831
1987	0	0	0	6	124	233	320	242	82	0	1	0	1008
1988	0	0	0	2	74	281	381	319	53	4	0	0	1114
1989	0	0	1	1	37	169	334	195	64	10	0	0	811
1990	0	0	7	26	7	173	222	164	112	14	1	0	726
1991	0	0	0	6	177	283	308	254	126	16	0	0	1170
1992	0	0	0	3	40	82	203	110	64	0	0	0	502
1993	0	0	0	0	37	162	356	301	41	4	0	0	901
1994	0	0	0	20	53	285	261	140	93	2	0	0	854
1995	0	0	0	0	10	218	323	420	73	4	0	0	1048
1996	0	0	0	5	50	210	176	207	70	1	0	0	719
1997	0	0	0	0	1	173	227	120	44	38	0	0	603
1998	0	0	5	0	107	216	209	219	126	11	0	0	893
1999	0	0	0	0	45	227	422	152	84	0	0	0	930
2000	0	0	0	0	66	157	201	199	76	10	0	0	709
2001	0	0	0	18	48	167	244	236	45	3	0	0	761
2002	0	0	0	45	30	214	364	246	125	23	0	0	1047

SNOWFALL (inches) 2002 FORT WAYNE, IN (FWA)

YEAR	JUL	AUG	SEP	OCT	NOV	DEC	JAN	FEB	MAR	APR	MAY	JUN	TOTAL
1973-74	0.0	0.0	0.0	0.0	T	20.3	8.5	7.9	3.8	1.8	0.0	0.0	42.3
1974-75	0.0	0.0	0.0	1.4	6.5	12.2	5.8	5.2	9.2	0.9	0.0	0.0	41.2
1975-76	0.0	0.0	0.0	0.0	6.0	10.0	6.3	6.1	3.5	T	0.0	0.0	31.9
1976-77	0.0	0.0	0.0	T	2.1	9.5	13.0	9.2	6.0	0.5	0.0	0.0	40.3
1977-78	0.0	0.0	0.0	T	7.1	18.4	25.3	6.1	2.7	1.0	0.0	0.0	60.6
1978-79	0.0	0.0	0.0	0.0	4.6	1.8	14.1	11.3	1.1	T	0.0	0.0	32.9
1979-80	0.0	0.0	0.0	T	2.0	2.0	4.5	16.9	2.0	1.3	0.0	0.0	28.7
1980-81	0.0	0.0	0.0	0.2	6.2	11.0	6.9	9.4	2.0	0.0	0.0	0.0	35.7
1981-82	0.0	0.0	0.0	T	3.6	17.6	29.5	14.0	6.7	9.8	0.0	0.0	81.2
1982-83	0.0	0.0	0.0	0.0	0.1	1.5	2.8	3.6	6.7	0.2	0.0	0.0	14.9
1983-84	0.0	0.0	0.0	0.0	0.9	16.3	10.8	7.9	13.3	0.6	0.0	0.0	49.8
1984-85	0.0	0.0	0.0	0.0	0.7	4.4	15.3	13.7	0.8	0.9	0.0	0.0	35.8
1985-86	0.0	0.0	0.0	0.0	1.9	10.4	4.0	16.3	1.3	0.2	0.0	0.0	34.1
1986-87	0.0	0.0	0.0	0.0	4.6	1.8	17.6	0.2	1.5	T	0.0	0.0	25.7
1987-88	0.0	0.0	0.0	T	3.9	3.7	4.2	16.7	5.6	T	0.0	0.0	34.1
1988-89	0.0	0.0	0.0	T	3.3	10.1	1.7	6.1	1.3	T	T	0.0	22.5
1989-90	0.0	T	0.0	8.0	2.1	8.3	1.7	3.8	T	T	0.0	T	23.9
1990-91	0.0	0.0	0.0	0.0	T	13.5	8.5	6.0	3.2	T	0.0	0.0	31.2
1991-92	0.0	0.0	0.0	T	3.5	2.0	11.8	0.7	9.8	T	0.0	T	27.8
1992-93	0.0	0.0	0.0	1.4	0.5	9.1	9.6	13.0	7.5	0.8	0.0	0.0	41.9
1993-94	0.0	0.0	0.0	1.0	2.0	5.5	12.4	11.3	2.8	7.5	0.0	0.0	42.5
1994-95	0.0	0.0	0.0	0.0	0.5	1.0	11.0	0.5	0.3	0.2	0.0	0.0	13.5
1995-96	0.0	0.0	0.0	T	1.5	14.8	14.7	2.2	5.6	1.2	0.0	0.0	40.0
1996-97					8.1	13.7	12.8	7.9	1.6	0.7	T		
1997-98					5.9	4.2	1.7		2.1	0.0	0.0	0.0	
1998-99	0.0	0.0	0.0	0.0	0.0	1.0	18.0	3.1	8.4	T	0.0	0.0	30.5
1999-00	0.0	0.0	0.0	T	0.1	1.9	12.5	2.5	9.1	0.4	0.0	0.0	26.5
2000-01	0.0	0.0	0.0	T	1.1	17.2	2.4	1.8	4.0	1.8	0.0	T	28.3
2001-02	T	0.0	0.0	T	0.0	1.9	1.5	6.0	7.3	T	0.0	T	16.7
2002-	0.0	0.0	0.0	T	3.1	9.4							
POR= 54 YRS	0.0	T	0.0	0.3	2.9	6.9	8.2	7.0	5.0	1.5	T	T	31.8

WBAN : 14827

REFERENCE NOTES:

<p>PAGE 1: THE TEMPERATURE GRAPH SHOWS NORMAL MAXIMUM AND NORMAL MINIMUM DAILY TEMPERATURES (SOLID CURVES) AND THE ACTUAL DAILY HIGH AND LOW TEMPERATURES (VERTICAL BARS).</p> <p>PAGE 2 AND 3: H/C INDICATES HEATING AND COOLING DEGREE DAYS. RH INDICATES RELATIVE HUMIDITY W/O INDICATES WEATHER AND OBSTRUCTIONS S INDICATES SUNSHINE. PR INDICATES PRESSURE. CLOUDINESS ON PAGE 3 IS THE SUM OF THE CEILOMETER AND SATELLITE DATA NOT TO EXCEED EIGHT EIGHTHS(OKTAS).</p> <p>GENERAL: T INDICATES TRACE PRECIPITATION, AN AMOUNT GREATER THAN ZERO BUT LESS THAN THE LOWEST REPORTABLE VALUE. + INDICATES THE VALUE ALSO OCCURS ON EARLIER DATES. BLANK ENTRIES DENOTE MISSING OR UNREPORTED DATA. NORMALS ARE 30-YEAR AVERAGES (1961 - 1990). ASOS INDICATES AUTOMATED SURFACE OBSERVING SYSTEM. PM INDICATES THE LAST DAY OF THE PREVIOUS MONTH. POR (PERIOD OF RECORD) BEGINS WITH THE JANUARY DATA MONTH AND IS THE NUMBER OF YEARS USED TO COMPUTE THE MEAN. INDIVIDUAL MONTHS WITHIN THE POR MAY BE MISSING. WHEN THE POR FOR A NORMAL IS LESS THAN 30 YEARS, THE NORMAL IS PROVISIONAL AND IS BASED ON THE NUMBER OF YEARS INDICATED. 0.* OR * INDICATES THE VALUE OR MEAN-DAYS-WITH IS BETWEEN 0.00 AND 0.05. CLOUDINESS FOR ASOS STATIONS DIFFERS FROM THE NON-ASOS OBSERVATION TAKEN BY A HUMAN OBSERVER. ASOS STATION CLOUDINESS IS BASED ON TIME-AVERAGED CEILOMETER DATA FOR CLOUDS AT OR BELOW 12,000 FEET AND ON SATELLITE DATA FOR CLOUDS ABOVE 12,000 FEET. THE NUMBER OF DAYS WITH CLEAR, PARTLY CLOUDY, AND CLOUDY CONDITIONS FOR ASOS STATIONS IS THE SUM OF THE CEILOMETER AND SATELLITE DATA FOR THE SUNRISE TO SUNSET PERIOD.</p>	<p>GENERAL CONTINUED: CLEAR INDICATES 0 - 2 OKTAS, PARTLY CLOUDY INDICATES 3 - 6 OKTAS, AND CLOUDY INDICATES 7 OR 8 OKTAS. WHEN AT LEAST ONE OF THE ELEMENTS (CEILOMETER OR SATELLITE) IS MISSING, THE DAILY CLOUDINESS IS NOT COMPUTED. WIND DIRECTION IS RECORDED IN TENS OF DEGREES (2 DIGITS) CLOCKWISE FROM TRUE NORTH. "00" INDICATES CALM. "36" INDICATES TRUE NORTH. RESULTANT WIND IS THE VECTOR AVERAGE OF THE SPEED AND DIRECTION. AVERAGE TEMPERATURE IS THE SUM OF THE MEAN DAILY MAXIMUM AND MINIMUM TEMPERATURE DIVIDED BY 2. SNOWFALL DATA COMPRISE ALL FORMS OF FROZEN PRECIPITATION, INCLUDING HAIL. A HEATING (COOLING) DEGREE DAY IS THE DIFFERENCE BETWEEN THE AVERAGE DAILY TEMPERATURE AND 65° F. DRY BULB IS THE TEMPERATURE OF THE AMBIENT AIR. DEW POINT IS THE TEMPERATURE TO WHICH THE AIR MUST BE COOLED TO ACHIEVE 100 PERCENT RELATIVE HUMIDITY. WET BULB IS THE TEMPERATURE THE AIR WOULD HAVE IF THE MOISTURE CONTENT WAS INCREASED TO 100 PERCENT RELATIVE HUMIDITY.</p> <p>ON JULY 1, 1996, THE NATIONAL WEATHER SERVICE BEGAN USING THE "METAR" OBSERVATION CODE THAT WAS ALREADY EMPLOYED BY MOST OTHER NATIONS OF THE WORLD. THE MOST NOTICEABLE DIFFERENCE IN THIS ANNUAL PUBLICATION WILL BE THE CHANGE IN UNITS FROM TENTHS TO EIGHTS(OKTAS) FOR REPORTING THE AMOUNT OF SKY COVER.</p>
---	--

2002
FORT WAYNE,
INDIANA (FWA)

Fort Wayne is located at the junction of the St. Marys, St. Joseph, and Maumee Rivers in northeastern Indiana. The surrounding area is generally level south and east of the city. Southwest and west, the terrain is somewhat rolling, while to the northwest and a few miles north from the city, it becomes quite hilly. The highest point in the general area is about 40 miles due north of Fort Wayne, near Angola, Indiana. At this point, the elevation rises to 1,060 feet above sea level.

The climate is representative of northeastern Indiana and is influenced to some extent by the Great Lakes. It does not differ greatly from the climates of other midwestern cities of the same general latitude. Temperature differences between daily highs and lows are invigorating and average about 20 degrees. The average occurrence of the last freeze in the spring is late April, and the first freeze in the fall is mid-October, making the average freeze-free period 173 days. The length of the growing season is favorable for the maturing of all crops and vegetables normally grown in the midwest.

Annual precipitation is well distributed, with somewhat larger monthly amounts falling in late spring and early summer. Damaging hailstorms occur at an average of about twice a year. One of the most notable storms caused severe damage to property, many thousands of trees, and power and telephone lines in the area. Severe flooding has also occurred in the area. Snow usually covers the ground for about 30 days during the winter months, but heavy snowstorms are not frequent.

Except for the considerable cloudiness that occurs during the winter months, Fort Wayne enjoys a good midwestern average sunshine. Heavy fog occurrence is infrequent.

STATION LOCATION

FORT WAYNE, INDIANA

LOCATION	Occupied From	Occupied To	Airline Distances and Directions from previous Location	LATITUDE NORTH	LONGITUDE WEST	ELEVATION ABOVE										AUTOMATIC OBSERVING EQUIPMENT * REMARKS	
						SEA LEVEL	GROUND										HYGRO THERMOMETER
							GROUND	WIND INSTRUMENT	EXTREME THERMOMETERS	PSYCHROMETER	SUNSHINE SWITCH	TIPPING GAUGE	WEIGHING RAIN GAUGE	8 INCH RAIN GAUGE			
*NOTE: <u>AIRPORT</u>																	
Administration Building Smith Field Airport	8/24/31	12/16/46	NA	42°10'	85°08'	824	33	5	5		a3	a3	a3	a	Installed for WBO/WBAS observational consolidation 8/1/39.		
Building 27 Baer Field Airport	12/16/46	3/13/53	11 mi. SSW	41°00'	85°13'	801	34 b30	5	5	Unk	3	5	3	b	Direct reading equipment added 11/20/48.		
Terminal Building Baer Field	3/13/53	07/01/96	450 ft. ESE	41°00'	85°12'	801 h791	62 d68 f20	18 c6 m19 p6 w6	18 c6 m18 p5	Unk j71 u19 v5	n5 r16	18 c5 k5 q6 w5	18 c5 k5 s5 w5	e5 g5 t5	c. Moved 180' NW to field site 9/25/56. d. Effective 9/16/57. e. Commissioned near runway intersection 12/10/60. f. Effective 9/25/61. g. Relocated to a site 1400' SE of runway intersection 9/26/61. h. Effective 9/26/61. i. Effective 4/17/64. j. Moved to roof 4/18/68. k. Moved 500' E 5/7/68. m. Moved to terminal building roof 5/1968. n. Installed 9/17/74. p. Moved 210' E to field site 6/4/80. q. Moved 210' SW 6/4/80. r. Moved 400' SW to roof 6/4/80. s. Moved 210' SW 8/1/80. t. Type change 9/12/85. u. Moved 3/20/92. v. Moved 4/29/94. w. Moved 8/4/94.		
International Airport	07/01/96	Present	NA	41°00'	85°12'	x803								S	ASOS Commissioned 07/01/96 x. Ground elevation.		

For Hard Copy Subscription:

Price and ordering information: NCDC Subscribing Service Center, 310 State Route 956, Building 300, Rocket Center, WV 26726.

INQUIRIES/COMMENTS CALL: Toll Free (866) 742-3322

Visit our Web Site for other weather data: www.ncdc.noaa.gov

Non-Subscription Request:

NCDC Customer Services;
Phone: 828-271-4800
Fax: 828-271-4876
Email: ncdc.orders@noaa.gov

OFFICIAL BUSINESS
PENALTY FOR PRIVATE USE \$300
CHANGE SERVICE REQUESTED

**FIRST CLASS
POSTAGE & FEES PAID
United States Department of Commerce
NOAA Permit No. G - 19**

* NOTES: For earlier station history see previous editions.