

2002

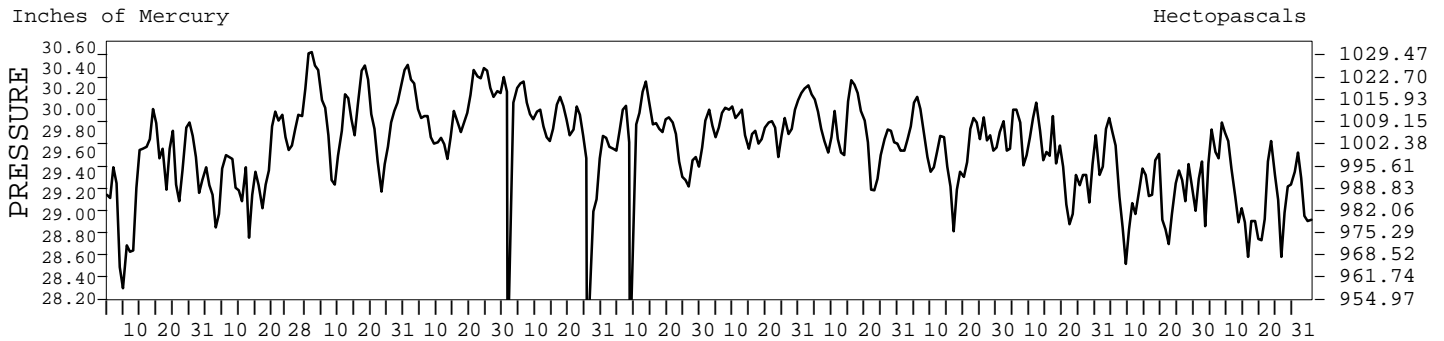
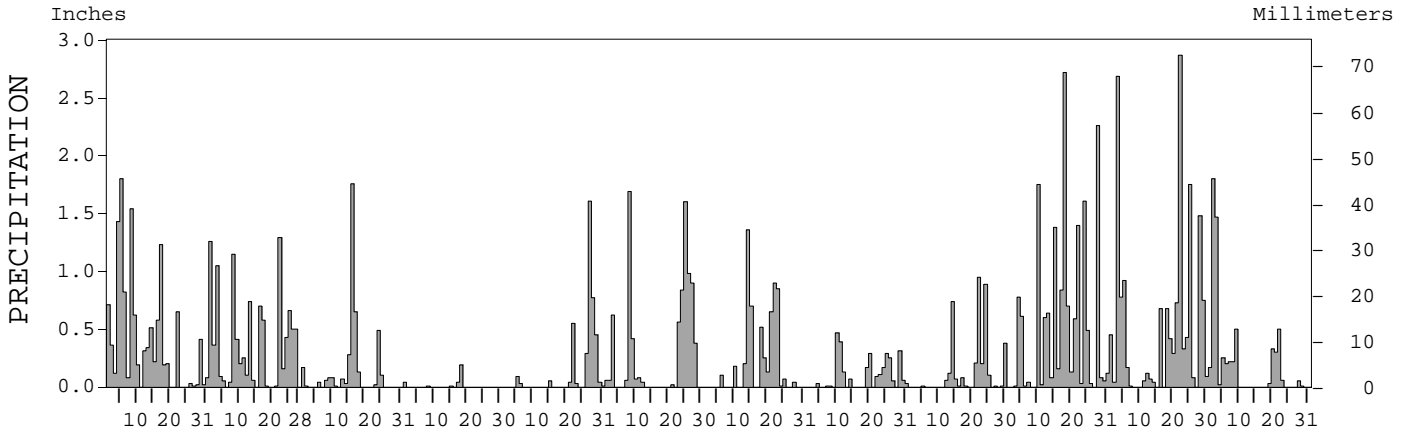
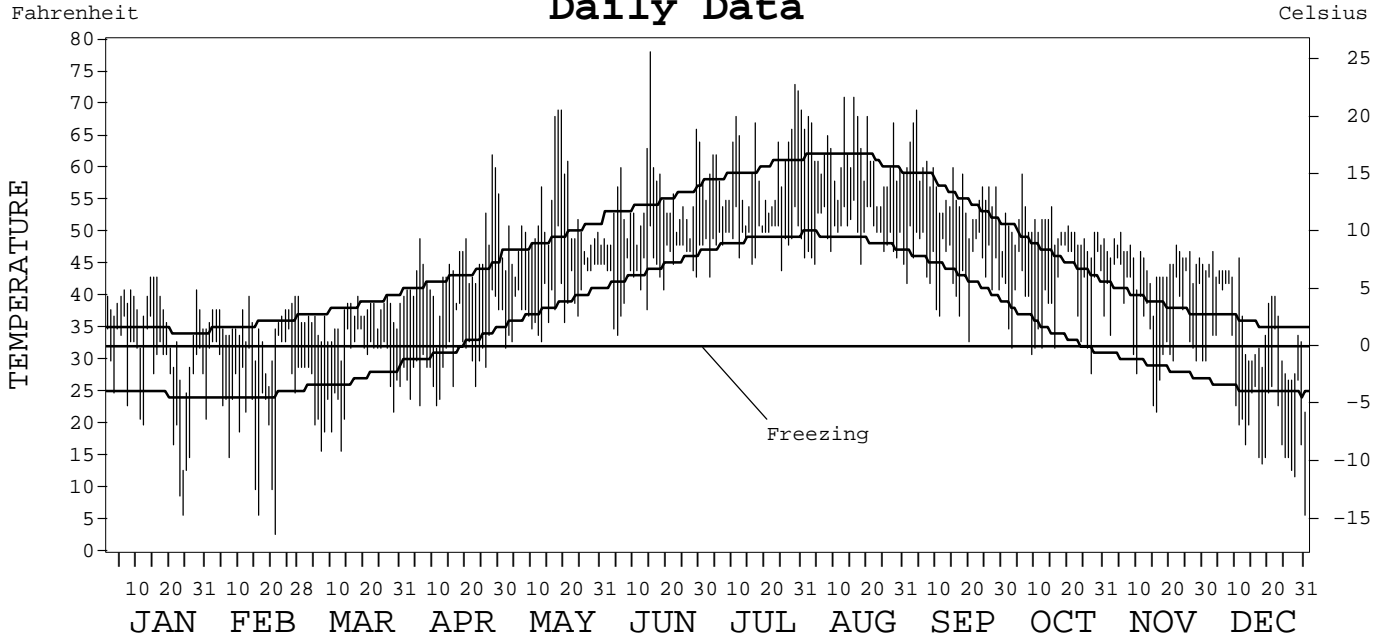
LOCAL CLIMATOLOGICAL DATA ANNUAL SUMMARY WITH COMPARATIVE DATA



ISSN 0197-9809

KODIAK, ALASKA (ADQ)

Daily Data



I CERTIFY THAT THIS IS AN OFFICIAL PUBLICATION OF THE NATIONAL OCEANIC AND ATMOSPHERIC ADMINISTRATION, AND IS COMPILED FROM RECORDS ON FILE AT THE NATIONAL CLIMATIC DATA CENTER.

NATIONAL OCEANIC AND ATMOSPHERIC ADMINISTRATION	NATIONAL ENVIRONMENTAL SATELLITE, DATA, AND INFORMATION SERVICE	NATIONAL CLIMATIC DATA CENTER ASHEVILLE, NORTH CAROLINA	DIRECTOR NATIONAL CLIMATIC DATA CENTER
---	---	---	---

METEOROLOGICAL DATA FOR 2002

KODIAK, AK (ADQ)

LATITUDE: 57° 45' 00" N LONGITUDE: 152° 29' 30" W ELEVATION (FT): GRND: 106 BARO: 109 TIME ZONE: ALASKA (UTC + 9) WBAN: 25501

	ELEMENT	JAN	FEB	MAR	APR	MAY	JUN	JUL	AUG	SEP	OCT	NOV	DEC	YEAR	
TEMPERATURE °F	MEAN DAILY MAXIMUM	36.0	35.3	36.6	44.8	51.5	55.0	59.8	61.7	56.5	50.4	45.3	36.1	47.4	
	HIGHEST DAILY MAXIMUM	43	40	40	62	69	78	73	71	69	59	50	47	78	
	DATE OF OCCURRENCE	16+	28+	27+	28	19+	15	29	16+	04	06	05	03	JUN 15	
	MEAN DAILY MINIMUM	26.8	24.4	27.4	30.6	39.5	44.0	49.1	49.7	44.4	39.5	35.9	24.8	36.3	
	LOWEST DAILY MINIMUM	6	3	16	23	32	34	43	45	33	28	22	6	3	
	DATE OF OCCURRENCE	24	21	13+	11+	02	05	03	31+	20	27	16	31	FEB 21	
	AVERAGE DRY BULB	31.4	29.9	32.0	37.7	45.5	49.5	54.5	55.7	50.5	45.0	40.6	30.5	41.9	
	MEAN WET BULB	30.7	28.9	29.3	33.8			51.1	52.3	46.4	43.8	40.0	29.3		
	MEAN DEW POINT	27.0	25.3	22.8	25.6			48.2	49.4	41.3	40.9	37.7	25.2		
	NUMBER OF DAYS WITH:														
	MAXIMUM ≥ 70°	0	0	0	0	0	1	2	2	0	0	0	0	5	
	MAXIMUM ≤ 32°	7	4	1	1	0	0	0	0	0	0	0	12	25	
	MINIMUM ≤ 32°	22	22	25	21	1	0	0	0	0	7	11	22	131	
MINIMUM ≤ 0°	0	0	0	0	0	0	0	0	0	0	0	0	0		
H/C	HEATING DEGREE DAYS	1035	976	1015	811	599	459	319	283	427	614	725	1064	8327	
	COOLING DEGREE DAYS	0	0	0	0	0	0	0	0	0	0	0	0	0	
RH	MEAN (PERCENT)	82	81	70	62	74	84	82	81	72	84	87	79	78	
	HOUR 03 LST	83	84	71	69	79	91	87	87	79	86	88	77	82	
	HOUR 09 LST	81	81	72	60	70	84	82	82	74	88	88	80	78	
	HOUR 15 LST	79	79	65	53	67	76	76	75	62	78	82	74	72	
	HOUR 21 LST	84	84	70	64	77	81	80	81	73	86	87	80	79	
S	PERCENT POSSIBLE SUNSHINE														
W/O	NUMBER OF DAYS WITH:														
	HEAVY FOG (VISBY ≤ 1/4 MI)	0	4	2	0	0	2	3	1	0	1	1	1	15	
	THUNDERSTORMS	0	0	0	0	0	0	1	0	0	0	0	0	1	
CLOUDINESS	SUNRISE-SUNSET: (OKTAS)														
	CEILOMETER (≤ 12,000 FT.)														
	SATELLITE (> 12,000 FT.)														
	MIDNIGHT-MIDNIGHT: (OKTAS)														
	CEILOMETER (≤ 12,000 FT.)														
	SATELLITE (> 12,000 FT.)														
NUMBER OF DAYS WITH:															
CLEAR															
PARTLY CLOUDY															
CLOUDY															
PR	MEAN STATION PRESS. (IN.)	29.37	29.44	29.96	30.04			29.88	29.79	29.66	29.57	29.21	29.22		
	MEAN SEA-LEVEL PRESS. (IN.)	29.62	29.56	30.08	30.16				29.91	29.77	29.69	29.36	29.34		
WINDS	RESULTANT SPEED (MPH)	0.9	3.4	3.4	3.5			3.1	1.1	2.2	3.5	4.3	1.6		
	RES. DIR. (TENS OF DEGS.)	32	13	31	30			07	04	30	11	10	35		
	MEAN SPEED (MPH)	12.0	12.4	10.5	9.3	7.6	8.2	8.1	6.0	8.8	10.6	11.5	10.1	9.6	
	PREVAIL. DIR. (TENS OF DEGS.)	31	12	29	29	12	06	06	29	29	12	31	29	29	
	MAXIMUM 2-MINUTE WIND:														
	SPEED (MPH)	47	45	39	38	30	26	25	23	36	43	49	46	49	
	DIR. (TENS OF DEGS.)	30	11	28	28	30	11	04	05	31	07	12	31	12	
	DATE OF OCCURRENCE	20	26	26	22	01	07	21+	26+	19	28	05	16	NOV 05	
	MAXIMUM 5-SECOND WIND:														
	SPEED (MPH)	61	53	52	44	37	36	31	29	44	52	59	60	61	
DIR. (TENS OF DEGS.)	30	11	26	27	30	02	05	27	30	07	13	29	30		
DATE OF OCCURRENCE	20	26	26	22	01	25	20	08	19	28	05	16	JAN 20		
PRECIPITATION	WATER EQUIVALENT:														
	TOTAL (IN.)	12.47	10.60	3.98	0.29	3.96	8.38	5.96	2.93	3.85	17.13	15.92	6.13	91.60	
	GREATEST 24-HOUR (IN.)	1.80	1.29	1.76	0.22	1.61	1.69	1.56	0.47	0.99	2.83	2.87	1.97	2.87	
	DATE OF OCCURRENCE	05	22	16	17-18	27	08	14-15	10	23-24	17-18	22	02-03	NOV 22	
	NUMBER OF DAYS WITH:														
	PRECIPITATION ≥ 0.01	25	23	16	5	12	16	14	18	16	26	24	16	211	
PRECIPITATION ≥ 0.10	19	17	7	1	5	9	11	10	8	17	17	11	132		
PRECIPITATION ≥ 1.00	4	4	1	0	1	2	1	0	0	6	4	2	25		
SNOWFALL	SNOW, ICE PELLETS, HAIL:														
	TOTAL (IN.)	14.0	52.0	20.0	0.1	0.0	0.0	0.0	0.0	0.0	0.0	T	1.8	87.9	
	GREATEST 24-HOUR (IN.)	6.5	15.6	4.9	0.1	0.0	0.0	0.0	0.0	0.0	0.0	T	0.5	15.6	
	DATE OF OCCURRENCE	22	08	24	15							18+	28	FEB 08	
	MAXIMUM SNOW DEPTH (IN.)	7	13	2	T	0	0	0	0	0	0	0	1	13	
	DATE OF OCCURRENCE	23	09	17+	10								28	FEB 09	
	NUMBER OF DAYS WITH:														
SNOWFALL ≥ 1.0	5	10	5	0	0	0	0	0	0	0	0	0	20		

NORMALS, MEANS, AND EXTREMES

KODIAK, AK (ADQ)

LATITUDE: 57° 45' 00" N LONGITUDE: 152° 29' 30" W ELEVATION (FT): GRND: 106 BARO: 109 TIME ZONE: ALASKA (UTC + 9) WBAN: 25501

ELEMENT		POR	JAN	FEB	MAR	APR	MAY	JUN	JUL	AUG	SEP	OCT	NOV	DEC	YEAR
TEMPERATURE °F	NORMAL DAILY MAXIMUM	30	34.7	35.5	38.3	42.7	48.8	54.5	59.6	61.4	55.6	46.2	39.0	35.8	46.0
	MEAN DAILY MAXIMUM	54	34.9	35.4	37.9	42.5	48.8	55.1	58.8	61.1	55.7	46.3	39.7	35.5	46.0
	HIGHEST DAILY MAXIMUM	54	54	56	57	64	80	86	82	83	73	62	54	56	86
	YEAR OF OCCURRENCE		1963	1957	1963	1965	1968	1953	1989	1968	1985	1983	1986	1984	JUN 1953
	MEAN OF EXTREME MAXS.	54	43.5	44.4	47.4	52.2	61.9	70.0	72.5	72.6	65.3	56.0	47.5	44.6	56.5
	NORMAL DAILY MINIMUM	30	24.6	24.3	26.8	31.8	38.2	43.9	48.5	48.6	43.2	34.3	28.9	25.3	34.9
	MEAN DAILY MINIMUM	54	25.6	25.5	27.3	32.1	38.3	44.3	48.0	49.1	44.1	34.9	30.0	25.8	35.4
	LOWEST DAILY MINIMUM	54	-16	-12	-6	7	20	30		34	26	10	0	-2	
	YEAR OF OCCURRENCE		1989	1971	1971	1977	1949	1968	1996	1998	1992	1975	1971	1997	
	MEAN OF EXTREME MINS.	54	8.9	8.2	13.4	21.3	30.7	37.3	41.6	41.2	33.5	22.7	16.8	9.6	23.8
	NORMAL DRY BULB	30	29.9	30.5	32.9	37.5	43.5	49.6	54.4	55.2	50.0	40.7	34.4	30.8	40.8
	MEAN DRY BULB	54	30.2	30.5	32.7	37.2	43.7	49.9	53.4	55.1	49.8	40.7	34.9	30.7	40.7
	MEAN WET BULB	17	29.3	28.9	31.2	35.0	41.0	47.2	48.8	51.9	46.8	37.9	32.6	30.2	38.4
	MEAN DEW POINT	17	25.3	24.3	25.6	30.3	36.8	44.4	46.7	48.8	43.6	33.1	28.0	26.0	34.4
	NORMAL NO. DAYS WITH:														
MAXIMUM ≥ 70°	30	0.0	0.0	0.0	0.0	0.4	1.2	2.5	3.2	0.3	0.0	0.0	0.0	7.6	
MAXIMUM ≤ 32°	30	8.3	7.1	4.7	1.1	*	0.0	0.0	0.0	0.0	0.9	3.9	7.9	33.9	
MINIMUM ≤ 32°	30	21.4	20.3	21.1	14.9	3.7	0.1	0.0	0.0	0.6	12.5	18.9	22.3	135.8	
MINIMUM ≤ 0°	30	0.6	0.6	0.3	0.0	0.0	0.0	0.0	0.0	0.0	*	0.2		1.7	
H/C	NORMAL HEATING DEG. DAYS	30	1096	983	989	833	667	474	339	310	468	766	931	1067	8923
	NORMAL COOLING DEG. DAYS	30	0	0	0	0	0	0	0	0	0	0	0	0	0
RH	NORMAL (PERCENT)	30	78	77	73	72	76	80	82	82	81	75	75	76	77
	HOUR 03 LST	30	79	78	77	78	82	86	88	88	86	79	77	76	81
	HOUR 09 LST	30	79	79	76	72	75	80	82	81	82	78	77	77	78
	HOUR 15 LST	30	75	72	66	66	70	75	76	74	73	67	70	73	71
	HOUR 21 LST	30	79	77	75	74	76	79	82	84	83	77	76	77	78
S	PERCENT POSSIBLE SUNSHINE														
W/O	MEAN NO. DAYS WITH:														
	HEAVY FOG(VISBY≤1/4 MI) THUNDERSTORMS	32 32	0.9 0.0	1.5 0.0	0.9 0.0	0.5 0.0	1.3 0.0	1.6 0.1	2.8 0.0	2.4 0.0	0.9 0.0	0.3 0.0	0.2 0.0	0.9 0.0	14.2 0.1
CLOUDINESS	MEAN:														
	SUNRISE-SUNSET (OKTAS)	29	5.8	5.8	5.6	6.1	6.4	6.4	6.2	6.0	6.0	5.6	5.5	5.8	5.9
	MIDNIGHT-MIDNIGHT (OKTAS)	32	5.6	5.5	5.4	6.0	6.3	6.4	6.1	5.9	5.8	5.2	5.0	5.5	5.7
	MEAN NO. DAYS WITH:														
CLEAR	27	5.3	6.0	6.6	4.3	3.4	3.4	3.1	4.1	3.9	5.6	6.7	5.8	58.2	
PARTLY CLOUDY	27	5.7	4.7	6.7	6.0	5.7	5.8	5.6	6.8	7.2	7.5	6.4	5.4	73.5	
CLOUDY	27	20.0	17.5	17.7	19.7	22.0	20.8	22.3	19.1	18.0	16.8	15.9	18.7	228.5	
PR	MEAN STATION PRESSURE (IN)	28	29.49	29.48	29.59	29.62	29.71	29.80	29.91	29.80	29.60	29.50	29.38	29.39	29.61
	MEAN SEA-LEVEL PRES. (IN)	17	29.57	29.65	29.70	29.74	29.85	29.91	30.00	29.92	29.76	29.62	29.56	29.55	29.74
WINDS	MEAN SPEED (MPH)	48	12.5	12.4	12.3	11.7	10.3	9.2	7.5	8.2	9.7	11.7	12.6	12.7	10.9
	PREVAIL. DIR (TENS OF DEGS)	22	31	31	31	31	31	06	06	31	31	31	31	31	31
	MAXIMUM 2-MINUTE:														
	SPEED (MPH)	6	51	51	49	53	39	33	30	48	43	43	49	49	53
	DIR. (TENS OF DEGS)		30	19	30	29	04	29	30	03	04	07	12	12	29
	YEAR OF OCCURRENCE		1999	2000	1998	1999	2001	1999	2001	1998	1999	2002	2002	2000	APR 1999
MAXIMUM 5-SECOND:															
SPEED (MPH)	6	66	62	64	62	51	43	40	60	56	54	60	60	66	
DIR. (TENS OF DEGS)		31	18	04	29	09	31	31	03	04	30	06	29	31	
YEAR OF OCCURRENCE		1999	2000	2001	1999	1999	1999	2001	1998	1999	2001	2001	2002	JAN 1999	
PRECIPITATION	NORMAL (IN)	30	8.17	5.72	5.22	5.48	6.31	5.38	4.12	4.48	7.84	8.36	6.63	7.64	75.35
	MAXIMUM MONTHLY (IN)	54	15.77	12.43	12.73	12.09	12.67	16.88	10.21	11.13	19.44	17.13	15.92	19.82	19.82
	YEAR OF OCCURRENCE		1977	1977	1998	1997	1983	1987	1985	1977	1995	2002	2002	1985	DEC 1985
	MINIMUM MONTHLY (IN)	54	0.24	1.41	0.67	0.29	1.00	0.67	0.84	0.65	1.20	1.56	0.19	1.21	0.19
	YEAR OF OCCURRENCE		1969	1956	1991	2002	1964	1997	1980	1994	1977	1956	1950	1977	NOV 1950
	MAXIMUM IN 24 HOURS (IN)	54	4.79	4.07	3.36	3.27	3.63	3.85	3.54	3.93	5.57	7.44	7.81	4.41	7.81
	YEAR OF OCCURRENCE		1998	1977	1998	1997	1979	1987	1998	1993	1995	1991	1991	1985	NOV 1991
	NORMAL NO. DAYS WITH:														
PRECIPITATION ≥ 0.01	30	17.9	16.5	16.5	15.5	17.5	15.4	14.7	14.5	17.0	16.3	16.0	17.5	195.3	
PRECIPITATION ≥ 1.00	30	1.6	1.0	0.6	0.5	1.1	1.4	0.9	1.3	2.0	1.9	1.3	1.7	15.3	
SNOWFALL	NORMAL (IN)	30	14.5	14.7	10.3	7.5	0.2	0.0	0.0	0.0	0.*	1.4	7.3	15.6	71.5
	MAXIMUM MONTHLY (IN)	54	40.1	52.0	74.5	34.8	6.0	T	0.0	0.0	0.4	14.9	30.0	46.4	74.5
	YEAR OF OCCURRENCE		1971	2002	1956	1985	1971	1965			1977	1961	1989	1990	MAR 1956
	MAXIMUM IN 24 HOURS (IN)	54	12.0	19.0	17.8	11.3	4.0	T	0.0	0.0	0.4	10.0	14.0	15.7	19.0
	YEAR OF OCCURRENCE		1976	1992	1956	1985	1968	1965			1977	1970	1965	1990	FEB 1992
	MAXIMUM SNOW DEPTH (IN)	53	22	28	35	25	4	0	0	0	9	11	17	35	35
YEAR OF OCCURRENCE		1958	1969	1956	1956	1968				1964	1963	1990		MAR 1956	
NORMAL NO. DAYS WITH:															
SNOWFALL ≥ 1.0	30	4.0	4.4	3.2	2.4	0.0	0.0	0.0	0.0	0.0	0.6	2.1	4.0	20.7	

PRECIPITATION (inches) 2002 KODIAK, AK (ADQ)

YEAR	JAN	FEB	MAR	APR	MAY	JUN	JUL	AUG	SEP	OCT	NOV	DEC	ANNUAL
1973	0.31	3.59	3.21	5.27	10.75	1.70	6.06	2.43	6.61	6.37	0.68	7.23	54.21
1974	2.86	3.94	6.69	6.15	3.66	4.57	3.32	4.25	10.36	13.07	7.15	5.38	71.40
1975	10.52	4.71	4.12	3.98	11.37	4.55	3.86	5.97	5.65	7.99	7.82	9.31	79.85
1976	10.54	2.97	2.11	3.53	4.26	4.34	4.09	8.89	12.14	5.53	14.79	11.14	84.33
1977	15.77	12.43	1.36	4.04	5.11	4.10	6.01	11.13	1.20	14.53	3.91	1.21	80.80
1978	11.58	11.56	3.63	6.49	11.05	0.70	4.04	3.53	5.85	12.18	6.69	9.95	87.25
1979	8.66	1.50	6.23	3.39	9.29	4.83	3.02	3.71	10.34	10.84	5.19	1.37	68.37
1980	6.09	9.58	5.11	5.85	6.34	2.15	0.84	1.78	8.62	9.38	7.12	4.64	67.50
1981	13.65	6.43	8.05	2.86	7.26	1.87	2.53	4.35	7.47	3.15	7.29	5.22	70.13
1982	7.22	2.12	1.99	3.60	5.55	7.29	3.81	2.23	10.10	3.54	7.58	13.49	68.52
1983	9.19	7.56	8.34	2.25	12.67	7.88	2.16	0.73	2.93	5.36	15.36	2.43	76.86
1984	10.11	5.75	9.94	6.27	4.90	5.15	3.04	1.39	8.37	3.15	4.98	5.50	68.55
1985	14.41	1.91	5.68	5.81	1.53	6.64	10.21	2.96	8.05	3.26	4.44	19.82	84.72
1986	11.63	6.31	4.59	2.69	2.27	13.16	2.72	6.42	2.22	11.37	5.35	11.64	80.37
1987	10.21	4.75	6.31	4.93	3.67	16.88	1.25	0.65	7.83	8.08	4.98	2.49	72.03
1988	6.91	11.50	8.59	6.65	2.42	1.59	4.11	8.28	6.55	10.20	7.93	11.48	86.21
1989	2.53	1.44	3.61	4.13	2.02	7.22	3.86	5.92	6.10	7.04	5.58	12.59	62.04
1990	6.79	2.90	5.56	6.63	4.75	2.14	7.93	7.86	8.96	5.40	2.32	4.91	66.15
1991	10.68	10.80	0.67	8.03	9.74	8.65	2.29	4.77	10.19	11.49	12.96	5.82	96.09
1992	9.07	2.14	5.49	2.10	7.52	5.59	2.25	6.02	2.69	4.84	4.83	4.97	57.51
1993	2.97	7.11	8.17	8.74	5.18	3.51	2.33	8.41	5.44	9.80	5.56	11.68	78.90
1994	11.81	4.15	10.14	7.27	9.10	3.36	7.29	0.65	6.57	12.92	1.90	8.71	83.87
1995	6.92	7.07	4.30	6.58	9.46	8.16	5.02	4.35	19.44	9.99	2.24	11.76	95.29
1996	3.00	2.05	1.70	9.74	1.62	2.35	6.49	2.51	8.96	4.76	6.74	6.49	56.41
1997	10.00	10.13	2.18	12.09	2.35	0.67	5.13	4.03	11.69	9.39	8.78	7.77	84.21
1998	13.49	7.22	12.73	7.46	7.24	7.77	8.20	3.75	11.34	13.96	8.58	4.51	106.25
1999	8.90	2.77	3.12	3.94	3.86	9.77	2.27	5.30	11.72	7.90	9.10	7.01	75.66
2000	2.27	6.33	6.35	6.99	1.87	5.01	2.08	1.23	2.63	10.31	9.59	12.34	67.00
2001	12.71	5.50	9.07	5.01	4.28	2.44	2.79	6.39	9.21	6.89	6.93	7.94	79.16
2002	12.47	10.60	3.98	0.29	3.96	8.38	5.96	2.93	3.85	17.13	15.92	6.13	91.60
POR= 54 YRS	6.98	5.21	4.87	4.45	5.17	4.91	3.82	4.57	7.03	7.32	6.27	6.54	67.14

WBAN : 25501

AVERAGE TEMPERATURE (°F) 2002 KODIAK, AK (ADQ)

YEAR	JAN	FEB	MAR	APR	MAY	JUN	JUL	AUG	SEP	OCT	NOV	DEC	ANNUAL
1973	22.3	31.3	30.0	38.0	41.2	46.4	50.4	51.5	46.2	37.9	32.7	32.2	38.3
1974	27.2	24.8	31.5	36.9	43.0	49.7	52.3	55.9	50.6	40.3	33.1	27.9	39.4
1975	25.5	23.2	27.6	33.4	39.0	45.3	51.1	51.9	47.8	39.6	26.8	25.6	36.4
1976	30.1	27.3	28.4	36.2	43.9	51.0	55.0	55.3	49.0	39.3	38.7	32.1	40.5
1977	37.0	36.1	31.5	34.8	41.9	49.1	54.4	53.1	49.9	39.4	30.6	27.2	40.4
1978	35.9	33.2	35.4	39.7	43.8	50.2	52.3	57.1	50.9	44.1	39.3	35.8	43.1
1979	38.1	27.1	37.9	44.2	45.9	53.3	58.6	57.1	52.9	45.6	38.5	26.8	43.8
1980	29.6	34.5	36.4	40.8	45.1	52.7	55.9	56.1	52.2	43.1	37.5	29.1	42.8
1981	38.2	34.0	39.3	41.9	47.2	52.2	57.5	56.1	50.2	43.0	36.3	31.2	43.9
1982	32.7	28.1	35.7	36.0	43.5	49.2	55.0	55.1	49.9	39.1	36.5	37.2	41.5
1983	30.7	37.0	40.5	41.8	46.6	51.9	57.1	58.0	51.5	42.8	38.1	38.1	44.5
1984	32.7	25.5	38.5	36.7	43.7	51.2	55.7	57.5	51.3	41.6	33.9	37.6	42.2
1985	39.2	28.8	35.4	31.8	41.5	46.2	52.3	54.2	51.1	36.5	32.8	36.4	40.5
1986	33.3	30.3	32.4	34.2	43.5	47.4	54.2	53.0	50.5	44.3	36.3	35.8	41.3
1987	34.0	36.2	35.4	38.1	44.8	47.7	55.9	56.5	48.4	41.8	33.3	28.0	41.7
1988	32.2	34.3	34.7	36.8	45.0	51.6	54.1	55.1	48.7	41.2	32.7	30.4	41.4
1989	21.7	33.0	33.1	39.4	44.7	50.1	57.2	57.1	52.0	41.1	32.1	34.7	41.4
1990	29.4	24.3	35.2	41.0	45.7	52.7	53.7	57.1	51.5	39.8	30.2	31.1	41.0
1991	30.3	27.5	33.6	39.0	44.9	49.7	53.8	54.3	50.3	41.7	37.5	30.2	41.1
1992	33.3	27.7	32.3	39.0	44.5	50.9	55.4	53.7	46.4	40.2	35.4	29.9	40.7
1993	27.3	30.9	35.3	40.3	47.1	50.9	57.1	57.1	50.7	42.4	37.5	35.0	42.6
1994	34.5	30.1	30.4	38.7	44.2	51.7	53.0	57.1	49.3	39.4	31.5	28.5	40.7
1995	31.0	31.7	29.6	40.8	43.2	49.4	54.0	55.5	51.7	42.3	34.0	34.8	41.5
1996	29.3	29.1	36.5	38.9	47.5	50.7	53.6	54.8	47.2	38.8	35.7	28.9	40.9
1997	30.8	36.0	31.8	38.2	47.4	53.3	56.4	57.5	52.0	39.7	34.1	24.8	41.8
1998	32.1	36.4	37.7	38.5	43.3	49.7	53.8	52.9	48.2	40.2	36.0	28.8	41.5
1999	26.3	21.7	28.1	35.8	42.9	48.1	55.9	54.5	49.1	38.2	33.8	26.2	38.4
2000	23.2	33.8	34.3	37.7	44.7	47.6	52.8	56.8	49.1	40.9	37.3	36.4	41.2
2001	32.5	33.1	34.0	38.3	42.1	53.6	55.9	56.6	49.9	37.0	33.2	25.6	41.0
2002	31.4	29.9	32.0	37.7	45.5	49.5	54.5	55.7	50.5	45.0	40.6	30.5	41.9
POR= 54 YRS	30.3	30.5	32.8	37.2	43.6	49.8	53.5	54.9	49.8	40.6	34.9	30.7	40.7

WBAN : 25501

HEATING DEGREE DAYS (base 65°F) 2002 KODIAK, AK (ADQ)

YEAR	JUL	AUG	SEP	OCT	NOV	DEC	JAN	FEB	MAR	APR	MAY	JUN	TOTAL
1973-74	447	412	558	837	960	1009	1164	1117	1033	836	672	456	9501
1974-75	386	276	427	758	952	1143	1220	1165	1148	946	800	586	9807
1975-76	424	396	507	782	1138	1215	1074	1087	1128	856	646	415	9668
1976-77	308	292	475	787	782	1013	861	803	1031	899	710	468	8429
1977-78	321	360	446	785	1026	1163	894	884	911	752	650	436	8628
1978-79	383	239	417	640	765	902	829	1055	837	620	586	344	7617
1979-80	200	236	357	597	785	1177	1090	877	879	720	611	361	7890
1980-81	274	270	378	675	820	1105	825	867	788	686	542	379	7609
1981-82	225	272	438	674	854	1038	996	1028	900	864	658	466	8413
1982-83	302	298	447	798	847	855	1053	780	754	688	561	385	7768
1983-84	237	213	400	681	802	826	993	1137	813	844	655	408	8009
1984-85	283	229	401	717	927	845	795	1009	909	989	719	559	8382
1985-86	386	325	410	873	958	879	976	966	1004	916	659	523	8875
1986-87	330	364	427	638	856	899	957	801	914	801	619	514	8120
1987-88	287	259	490	715	944	1139	1011	884	935	840	616	394	8514
1988-89	331	298	484	729	963	1066	1336	892	980	763	621	442	8905
1989-90	236	237	384	735	983	937	1098	1137	916	712	589	363	8327
1990-91	346	239	398	772	1039	1043	1067	1045	965	773	617	453	8757
1991-92	342	324	432	713	820	1073	978	1075	1009	773	627	415	8581
1992-93	289	345	553	764	880	1082	1163	947	910	733	549	418	8633
1993-94	248	246	422	692	817	921	936	966	1066	783	638	391	8126
1994-95	369	236	463	784	1000	1128	1044	926	1093	718	668	464	8893
1995-96	335	287	392	702	922	928	1101	1036	876	774	534	420	8307
1996-97	347	310	528	803	873	1113	1053	804	1023	796	537	354	8541
1997-98	260	228	383	776	920	1239	1010	794	843	787	665	449	8354
1998-99	341	367	497	762	862	1118	1191	1208	1139	869	679	502	9535
1999-00	281	318	468	824	930	1195	1288	898	947	812	626	512	9099
2000-01	371	250	470	740	828	880	1003	888	953	794	701	341	8219
2001-02	276	253	448	863	947	1214	1035	976	1015	811	599	459	8896
2002-	319	283	427	614	725	1064							

WBAN : 25501

COOLING DEGREE DAYS (base 65°F) 2002 KODIAK, AK (ADQ)

YEAR	JAN	FEB	MAR	APR	MAY	JUN	JUL	AUG	SEP	OCT	NOV	DEC	ANNUAL
1973	0	0	0	0	0	0	0	0	0	0	0	0	0
1974	0	0	0	0	0	3	0	0	0	0	0	0	3
1975	0	0	0	0	0	0	0	0	0	0	0	0	0
1976	0	0	0	0	0	0	5	0	0	0	0	0	5
1977	0	0	0	0	0	0	0	0	0	0	0	0	0
1978	0	0	0	0	0	0	0	0	0	0	0	0	0
1979	0	0	0	0	0	0	8	0	0	0	0	0	8
1980	0	0	0	0	0	0	0	1	0	0	0	0	1
1981	0	0	0	0	0	0	0	0	0	0	0	0	0
1982	0	0	0	0	0	0	0	0	0	0	0	0	0
1983	0	0	0	0	0	0	0	3	0	0	0	0	3
1984	0	0	0	0	0	0	3	1	0	0	0	0	4
1985	0	0	0	0	0	0	0	0	0	0	0	0	0
1986	0	0	0	0	0	0	1	0	0	0	0	0	1
1987	0	0	0	0	0	0	7	0	0	0	0	0	7
1988	0	0	0	0	0	0	0	0	0	0	0	0	0
1989	0	0	0	0	0	1	1	0	0	0	0	0	2
1990	0	0	0	0	0	0	0	0	0	0	0	0	0
1991	0	0	0	0	0	0	0	0	0	0	0	0	0
1992	0	0	0	0	0	0	0	0	0	0	0	0	0
1993	0	0	0	0	0	0	8	9	0	0	0	0	17
1994	0	0	0	0	0	0	0	0	0	0	0	0	0
1995	0	0	0	0	0	1	0	1	0	0	0	0	2
1996	0	0	0	0	0	0	0	0	0	0	0	0	0
1997	0	0	0	0	0	9	0	0	0	0	0	0	9
1998	0	0	0	0	0	0	1	0	0	0	0	0	1
1999	0	0	0	0	0	0	7	0	0	0	0	0	7
2000	0	0	0	0	0	0	0	3	0	0	0	0	3
2001	0	0	0	0	0	3	0	0	0	0	0	0	3
2002	0	0	0	0	0	0	0	0	0	0	0	0	0

SNOWFALL (inches) 2002 KODIAK, AK (ADQ)

YEAR	JUL	AUG	SEP	OCT	NOV	DEC	JAN	FEB	MAR	APR	MAY	JUN	TOTAL
1973-74	0.0	0.0	0.0	10.6	1.9	14.3	18.6	16.7	12.9	3.3	0.4	0.0	78.7
1974-75	0.0	0.0	0.0	1.4	13.0	14.3	32.2	27.1	23.6	5.2	0.2	0.0	117.0
1975-76	0.0	0.0	0.0	1.2	20.5	33.1	39.7	13.8	13.2	17.0	T	0.0	138.5
1976-77	0.0	0.0	0.0	0.6	8.5	10.2	T	12.2	8.7	1.4	0.2	0.0	41.8
1977-78	0.0	0.0	0.4	T	12.0	14.1	3.9	16.7	7.0	1.6	0.0	0.0	55.7
1978-79	0.0	0.0	0.0	0.0	3.9	8.6	4.2	10.6	18.0	0.1	T	0.0	45.4
1979-80	0.0	0.0	0.0	T	9.7	4.7	15.3	13.4	7.1	1.0	T	0.0	51.2
1980-81	0.0	0.0	0.0	T	0.8	10.6	3.3	10.9	T	1.7	T	0.0	27.3
1981-82	0.0	0.0	0.0	0.2	3.1	9.6	14.2	4.0	9.5	19.8	1.4	0.0	61.8
1982-83	0.0	0.0	0.0	6.0	0.4	2.4	6.4	1.0	0.6	1.8	T	0.0	18.6
1983-84	0.0	0.0	0.0	6.1	7.2	T	19.2	38.8	2.0	9.0	T	0.0	82.3
1984-85	0.0	0.0	0.0	T	2.9	6.0	0.1	12.9	30.0	34.8	0.8	0.0	87.5
1985-86	0.0	0.0	0.0	4.5	9.0	11.0	23.5	17.0	6.4	11.9	0.8	0.0	84.1
1986-87	0.0	0.0	0.0	0.0	4.2	2.1	8.3	2.0	9.9	4.3	T	0.0	30.8
1987-88	0.0	0.0	0.0	0.0	5.8	6.9	7.6	24.4	15.8	16.6	T	0.0	77.1
1988-89	0.0	0.0	0.0	T	8.6	14.4	18.2	9.3	5.7	0.4	0.0	0.0	56.6
1989-90	0.0	0.0	0.0	0.5	30.0	8.3	35.8	35.1	15.9	3.6	0.0	0.0	129.2
1990-91	0.0	0.0	0.0	3.7	5.0	46.4	20.1	13.2	5.0	11.0	T	0.0	104.4
1991-92	0.0	0.0	0.0	0.0	24.8	24.0	7.0	27.6	15.0	0.8	0.8	0.0	100.0
1992-93	0.0	0.0	T	T	1.2	29.4	6.9	4.2	3.8	1.0	T	0.0	46.5
1993-94	0.0	0.0	0.0	0.2	0.5	6.4	3.8	14.5	14.3	T	T	0.0	39.7
1994-95	0.0	0.0	0.0	2.9	6.3	37.6	12.9	24.4	8.1	5.5	T	0.0	97.7
1995-96	0.0	0.0	0.0	0.8	2.8	2.0	27.9	21.9	4.8	7.3	0.0	0.0	67.5
1996-97	0.0	T	T	6.6	1.4	36.4	30.5		10.8	3.0	0.0	0.0	
1997-98	0.0	0.0	0.0	0.6	7.9	34.2	8.5	1.8	0.8	0.1	T	0.0	53.9
1998-99	0.0	0.0	0.0	0.0	0.3	15.1	5.6	12.5	26.2	16.2	T	0.0	75.9
1999-00	0.0	0.0	0.0	2.3	7.9	24.0	16.3	6.3	5.3	19.8	T	0.0	81.9
2000-01	0.0	0.0	0.0	T	T	0.1	16.8	0.8	14.3	1.2	3.9	0.0	37.1
2001-02	0.0	0.0	0.0	1.5	4.1	23.0	14.0	52.0	20.0	0.1	0.0	0.0	114.7
2002-	0.0	0.0	0.0	0.0	T	1.8							
POR= 39 YRS	0.0	0.0	0.0	1.9	6.8	14.0	15.0	17.6	12.6	7.4	0.7	T	76.0

WBAN : 25501

REFERENCE NOTES:

<p>PAGE 1: THE TEMPERATURE GRAPH SHOWS NORMAL MAXIMUM AND NORMAL MINIMUM DAILY TEMPERATURES (SOLID CURVES) AND THE ACTUAL DAILY HIGH AND LOW TEMPERATURES (VERTICAL BARS).</p> <p>PAGE 2 AND 3: H/C INDICATES HEATING AND COOLING DEGREE DAYS. RH INDICATES RELATIVE HUMIDITY W/O INDICATES WEATHER AND OBSTRUCTIONS S INDICATES SUNSHINE. PR INDICATES PRESSURE. CLOUDINESS ON PAGE 3 IS THE SUM OF THE CEILOMETER AND SATELLITE DATA NOT TO EXCEED EIGHT EIGHTHS(OKTAS).</p> <p>GENERAL: T INDICATES TRACE PRECIPITATION, AN AMOUNT GREATER THAN ZERO BUT LESS THAN THE LOWEST REPORTABLE VALUE. + INDICATES THE VALUE ALSO OCCURS ON EARLIER DATES. BLANK ENTRIES DENOTE MISSING OR UNREPORTED DATA. NORMALS ARE 30-YEAR AVERAGES (1961 - 1990). ASOS INDICATES AUTOMATED SURFACE OBSERVING SYSTEM. PM INDICATES THE LAST DAY OF THE PREVIOUS MONTH. POR (PERIOD OF RECORD) BEGINS WITH THE JANUARY DATA MONTH AND IS THE NUMBER OF YEARS USED TO COMPUTE THE MEAN. INDIVIDUAL MONTHS WITHIN THE POR MAY BE MISSING. WHEN THE POR FOR A NORMAL IS LESS THAN 30 YEARS, THE NORMAL IS PROVISIONAL AND IS BASED ON THE NUMBER OF YEARS INDICATED. 0.* OR * INDICATES THE VALUE OR MEAN-DAYS-WITH IS BETWEEN 0.00 AND 0.05. CLOUDINESS FOR ASOS STATIONS DIFFERS FROM THE NON-ASOS OBSERVATION TAKEN BY A HUMAN OBSERVER. ASOS STATION CLOUDINESS IS BASED ON TIME-AVERAGED CEILOMETER DATA FOR CLOUDS AT OR BELOW 12,000 FEET AND ON SATELLITE DATA FOR CLOUDS ABOVE 12,000 FEET. THE NUMBER OF DAYS WITH CLEAR, PARTLY CLOUDY, AND CLOUDY CONDITIONS FOR ASOS STATIONS IS THE SUM OF THE CEILOMETER AND SATELLITE DATA FOR THE SUNRISE TO SUNSET PERIOD.</p>	<p>GENERAL CONTINUED: CLEAR INDICATES 0 - 2 OKTAS, PARTLY CLOUDY INDICATES 3 - 6 OKTAS, AND CLOUDY INDICATES 7 OR 8 OKTAS. WHEN AT LEAST ONE OF THE ELEMENTS (CEILOMETER OR SATELLITE) IS MISSING, THE DAILY CLOUDINESS IS NOT COMPUTED. WIND DIRECTION IS RECORDED IN TENS OF DEGREES (2 DIGITS) CLOCKWISE FROM TRUE NORTH. "00" INDICATES CALM. "36" INDICATES TRUE NORTH. RESULTANT WIND IS THE VECTOR AVERAGE OF THE SPEED AND DIRECTION. AVERAGE TEMPERATURE IS THE SUM OF THE MEAN DAILY MAXIMUM AND MINIMUM TEMPERATURE DIVIDED BY 2. SNOWFALL DATA COMPRISE ALL FORMS OF FROZEN PRECIPITATION, INCLUDING HAIL. A HEATING (COOLING) DEGREE DAY IS THE DIFFERENCE BETWEEN THE AVERAGE DAILY TEMPERATURE AND 65° F. DRY BULB IS THE TEMPERATURE OF THE AMBIENT AIR. DEW POINT IS THE TEMPERATURE TO WHICH THE AIR MUST BE COOLED TO ACHIEVE 100 PERCENT RELATIVE HUMIDITY. WET BULB IS THE TEMPERATURE THE AIR WOULD HAVE IF THE MOISTURE CONTENT WAS INCREASED TO 100 PERCENT RELATIVE HUMIDITY.</p> <p>ON JULY 1, 1996, THE NATIONAL WEATHER SERVICE BEGAN USING THE "METAR" OBSERVATION CODE THAT WAS ALREADY EMPLOYED BY MOST OTHER NATIONS OF THE WORLD. THE MOST NOTICEABLE DIFFERENCE IN THIS ANNUAL PUBLICATION WILL BE THE CHANGE IN UNITS FROM TENTHS TO EIGHTS(OKTAS) FOR REPORTING THE AMOUNT OF SKY COVER.</p>
---	--

2002 KODIAK, ALASKA (ADQ)

Kodiak Island is located on the western side of the Gulf of Alaska, 90 miles southwest of the Kenai Peninsula. Oriented northeast-southwest, the island lies 25 miles southeast of the Alaska Peninsula, separated from it by the Shelikof Strait. Afognak Island lies northeast of Kodiak, across Kupreanof Strait, which averages less than half a mile in width. The two islands are generally considered to be a single landmass, approximately 145 miles long by 50 miles wide. The terrain is rugged, with the mountains averaging from 2,000 to 4,000 feet in height. The highest mountains on Kodiak extend to roughly 5,000 feet. The island has many lakes, ponds, interconnecting waterways, and drainage streams. The irregular shoreline is indented by numerous bays, many of which are deep and narrow.

The National Weather Service Office is located on U. S. Coast Guard Base Kodiak, adjacent to Womens Bay, a small U shaped bay extending westward from the main body of Chiniak Bay.

Kodiak has primarily a marine climate which is exemplified by the limited daily and annual temperature ranges. During the summer, the mean air temperature closely approximates the mean sea surface temperature, rising slightly above it during August but falling below again in September. In winter, the mean maximum air temperature more closely resembles the mean sea surface temperature curve. The absolute temperature range is nearly 100 degrees. Summer maximum temperatures will vary 10 to 20 degrees, depending on whether the northwest gradient is strong enough to maintain a flow of air from over the island, or whether it is weak enough that the sea breeze predominates. The highest daily maximum temperatures occur with northwest winds in summer.

Precipitation is normally abundant throughout the year. All months have a wide variation in the amount of precipitation. A very high percentage of the precipitation falls during northeast to southeast winds. Small amounts of snow may fall as late as May or as early as September with good ground cover anticipated in November. Precipitation measurement is often difficult due to strong, gusty surface winds which frequently accompany precipitation. Drifting and blowing snow occasionally close the field for periods of up to 24 hours.

Although the prevailing wind direction is northwesterly every month except May, June, and July, and the average speed is about 10 knots, these data may be misleading because of the extreme variability in both direction and speed. Maximum gusts of over 90 knots has been recorded. Coast Guard Cutters docked in Womens Bay have reported williwaw winds off Old Womens Mountain in excess of 120 knots. Gusts of over 50 knots have occurred during each month of the year, but are most likely to occur in the winter months.

STATION LOCATION

KODIAK, ALASKA

LOCATION	Occupied From	Occupied To	Airline Distances and Directions from previous Location	LATITUDE NORTH	LONGITUDE WEST	ELEVATION ABOVE										AUTOMATIC OBSERVING EQUIPMENT * REMARKS
						GROUND										
						SEA LEVEL GROUND	WIND INSTRUMENT	EXTREME THERMOMETERS	PSYCHROMETER	SUNSHINE SWITCH	TIPPING GAUGE	WEIGHING RAIN GAGE	8 INCH RAIN GAGE	HYGROTHERMOMETER		
Building #36 U.S.C.G. Base	12/1941	12/31/72		57°45'	152°30'	21 b14	# c60	36	#					a31	d6	U.S. Navy #. Elevations not available. a. 4 inch gage. b. Effective in 1954. c. Effective 8/14/58. d. AN/GMO-14A Commissioned 9/8/59.
Building #36 U.S.C.G. Base	1/1/73	01/01/97	Same Site	57°45'	152°30'	14 m15	e22 i33	36 h	36 h				k6	f4 j5	g6 n6	National Weather Service e. 60 feet to 5/18/73. f. 8 inch gage commissioned 3/12/73 in place of 4 inch gage. g. Hygrothermometer commissioned 5/31/73. h. Removed 10/31/73. i. Raised 3/19/83. j. Minor move 8/1/83. k. Installed 8/1/83. m. Effective 1983. n. Type change 07/10/85.
<u>AIRPORT</u> Kodiak Airport	01/01/97	Present	NA	57°45'	152°30'	o106									S	ASOS Commissioned 01/01/97 o. Ground elevation.

For Hard Copy Subscription:

Price and ordering information: NCDC Subscribing Service Center, 310 State Route 956, Building 300, Rocket Center, WV 26726.

INQUIRIES/COMMENTS CALL: Toll Free (866) 742-3322

Visit our Web Site for other weather data: www.ncdc.noaa.gov

Non-Subscription Request:

NCDC Customer Services;
Phone: 828-271-4800
Fax: 828-271-4876
Email: ncdc.orders@noaa.gov

OFFICIAL BUSINESS
PENALTY FOR PRIVATE USE \$300
CHANGE SERVICE REQUESTED

FIRST CLASS
POSTAGE & FEES PAID
United States Department of Commerce
NOAA Permit No. G - 19