

2000

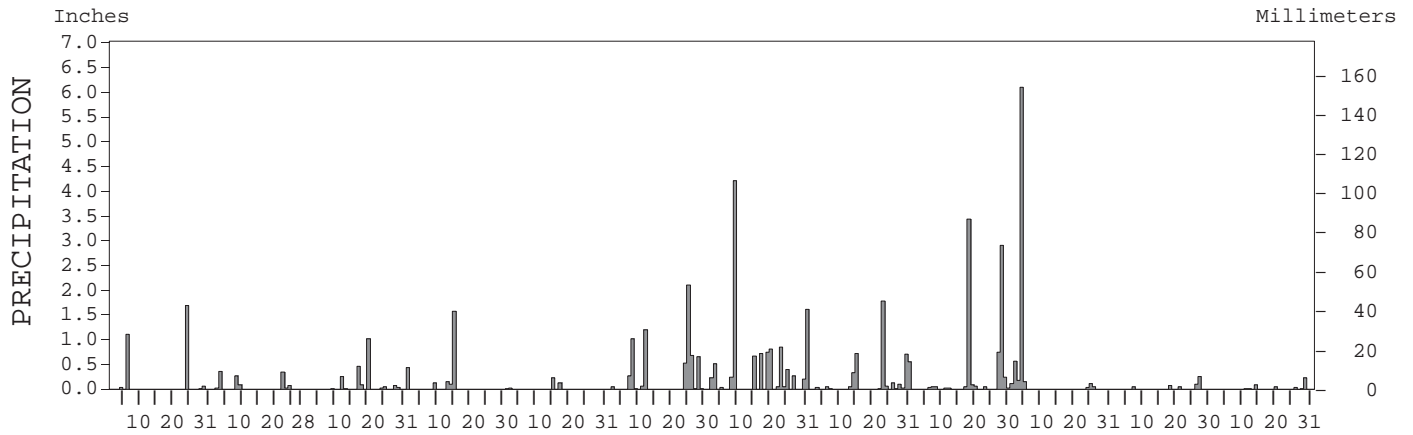
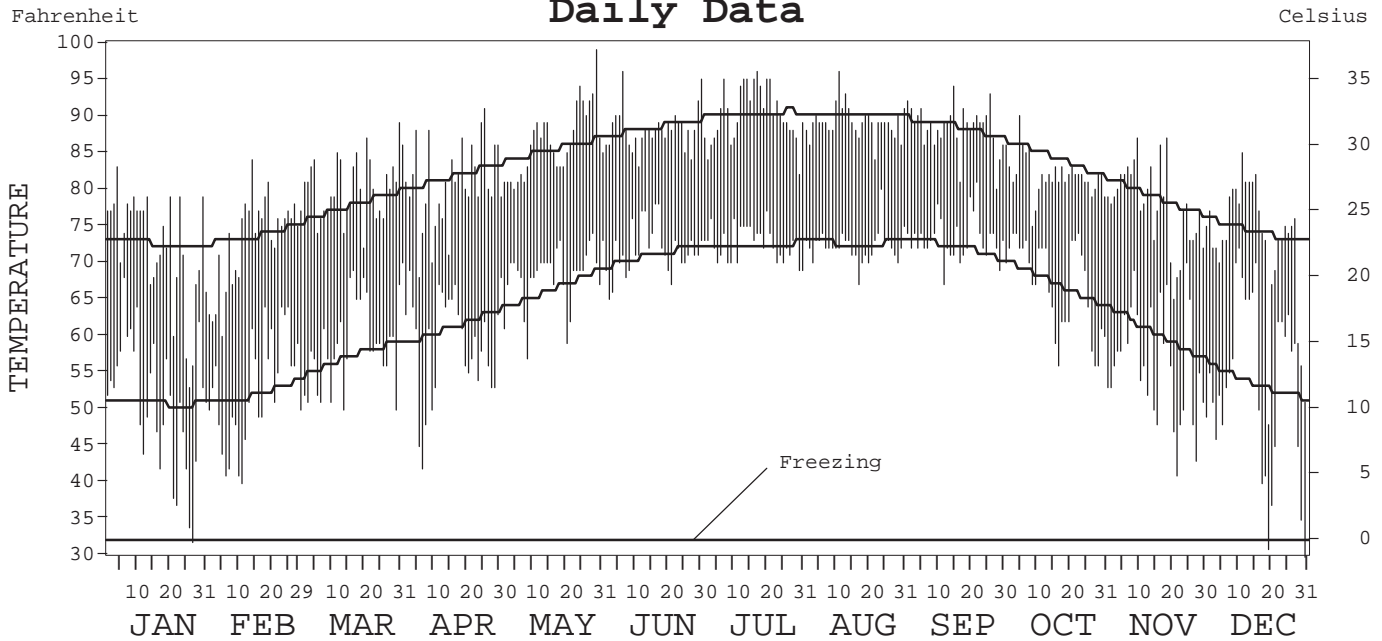
LOCAL CLIMATOLOGICAL DATA
ANNUAL SUMMARY WITH COMPARATIVE DATA



ISSN 0742-8758

VERO BEACH,
FLORIDA (VRB)

Daily Data



I CERTIFY THAT THIS IS AN OFFICIAL PUBLICATION OF THE NATIONAL OCEANIC AND ATMOSPHERIC ADMINISTRATION,
AND IS COMPILED FROM RECORDS ON FILE AT THE NATIONAL CLIMATIC DATA CENTER.

Thomas R. Karl

NATIONAL OCEANIC AND ATMOSPHERIC ADMINISTRATION	NATIONAL ENVIRONMENTAL SATELLITE, DATA, AND INFORMATION SERVICE	NATIONAL CLIMATIC DATA CENTER ASHEVILLE, NORTH CAROLINA	DIRECTOR NATIONAL CLIMATIC DATA CENTER
---	---	---	---

METEOROLOGICAL DATA FOR 2000

VERO BEACH, FL (VRB)

LATITUDE: 27° 39' 0 " N LONGITUDE: 80° 25' 0 " W ELEVATION (FT): GRND: 24 BARO: 39 TIME ZONE: EASTERN (UTC + 5) WBAN: 12843

	ELEMENT	JAN	FEB	MAR	APR	MAY	JUN	JUL	AUG	SEP	OCT	NOV	DEC	YEAR	
TEMPERATURE °F	MEAN DAILY MAXIMUM	71.9	73.1	80.3	80.7	86.5	88.2	90.2	89.1	88.4	81.9	77.7	72.9	81.7	
	HIGHEST DAILY MAXIMUM	83	84	89	91	99	96	96	96	94	90	87	85	99	
	DATE OF OCCURRENCE	04	14	30	25	29	06	17	11	15	05	19+	12	MAY 29	
	MEAN DAILY MINIMUM	50.8	52.6	59.0	59.0	68.2	71.6	72.5	72.2	73.2	66.9	56.2	53.5	63.0	
	LOWEST DAILY MINIMUM	32	40	50	42	57	65	69	67	67	56	41	30	30	
	DATE OF OCCURRENCE	27	11	29+	06	08	02	31+	17	12	29+	22	31	DEC 31	
	AVERAGE DRY BULB	61.4	62.9	69.7	69.9	77.4	79.9	81.4	80.7	80.8	74.4	67.0	63.2	72.4	
	MEAN WET BULB														
	MEAN DEW POINT														
	NUMBER OF DAYS WITH:														
MAXIMUM ≥ 90°	0	0	0	1	7	6	16	10	10	1	0	0	0	51	
MAXIMUM ≤ 32°	0	0	0	0	0	0	0	0	0	0	0	0	0	0	
MINIMUM ≤ 32°	1	0	0	0	0	0	0	0	0	0	0	2	3		
MINIMUM ≤ 0°	0	0	0	0	0	0	0	0	0	0	0	0	0		
H/C	HEATING DEGREE DAYS	137	98	6	23	0	0	0	0	0	46	141	451		
	COOLING DEGREE DAYS	34	44	155	175	389	456	516	492	483	298	112	93	3247	
RH	MEAN (PERCENT)									96		92			
	HOUR 01 LST									-9		-9			
	HOUR 07 LST									-9		-9			
	HOUR 13 LST									-9		-9			
	HOUR 19 LST									-9		-9			
S	PERCENT POSSIBLE SUNSHINE														
W/O	NUMBER OF DAYS WITH:														
	HEAVY FOG (VISBY ≤ 1/4 MI)	4	1	1	1	2	0	1	0	0	0	1	11		
	THUNDERSTORMS	1	0	3	5	2	9	17	13	9	0	0	59		
CLOUDINESS	AVG. SKY COVER (OKTAS)														
	SUNRISE - SUNSET														
	MIDNIGHT - MIDNIGHT														
	NUMBER OF DAYS WITH:														
CLEAR															
PARTLY CLOUDY															
CLOUDY															
PR	MEAN STATION PRESS. (IN.)	30.17	30.20	30.05	30.04	30.05	30.09	30.00	30.04	29.95	30.06	30.06	30.14	30.07	
	MEAN SEA-LEVEL PRESS. (IN.)														
WINDS	RESULTANT SPEED (MPH)	1.2	2.1	1.1	0.3	3.3	1.5	2.6	2.1	2.3	5.7	1.4	2.4	0.8	
	RES. DIR. (TENS OF DEGS.)	33	04	12	23	10	21	21	16	12	04	35	02	08	
	MEAN SPEED (MPH)	8.4	8.3	9.2	9.4	9.7	8.6	7.2	6.8	7.5	9.2	7.6	9.2	8.4	
	PREVAIL. DIR. (TENS OF DEGS.)	36	36	25	12	11	13	23	11	14	05	33	32	13	
	MAXIMUM 2-MINUTE WIND:														
	SPEED (MPH)														
	DIR. (TENS OF DEGS.)														
	DATE OF OCCURRENCE														
	PEAK GUST :														
	SPEED (MPH)														
DIR. (TENS OF DEGS.)															
DATE OF OCCURRENCE															
PRECIPITATION	WATER EQUIVALENT:														
	TOTAL (IN.)	2.88	1.15	2.41	1.95	0.36	6.55	11.55	4.53	7.83	7.15	0.50	0.42	47.28	
	GREATEST 24-HOUR (IN.)	1.68	0.35	1.01	1.57	0.22	2.10	4.21	1.77	3.43	6.09	0.25	0.22	6.09	
	DATE OF OCCURRENCE	24	03	19	14	14	24	08	22	17	03	26	28	OCT 03	
	NUMBER OF DAYS WITH:														
	PRECIPITATION ≥ 0.01	5	7	11	5	3	12	16	15	15	7	5	7	108	
PRECIPITATION ≥ 0.10	2	3	4	4	2	7	13	7	5	5	2	1	55		
PRECIPITATION ≥ 1.00	2	0	1	1	0	3	2	1	2	1	0	0	13		
SNOWFALL	SNOW, ICE PELLETS, HAIL:														
	TOTAL (IN.)	0.0	0.0	0.0	0.0	0.0	0.0	0.0	0.0	0.0	0.0	0.0	0.0	0.0	
	GREATEST 24-HOUR (IN.)	0.0	0.0	0.0	0.0	0.0	0.0	0.0	0.0	0.0	0.0	0.0	0.0	0.0	
	DATE OF OCCURRENCE														
	MAXIMUM SNOW DEPTH (IN.)	0	0	0	0	0	0	0	0	0	0	0	0	0	
	DATE OF OCCURRENCE														
NUMBER OF DAYS WITH:															
SNOWFALL ≥ 1.0	0	0	0	0	0	0	0	0	0	0	0	0	0		

NORMALS, MEANS, AND EXTREMES

VERO BEACH, FL (VRB)

LATITUDE: 27° 39' 0 " N LONGITUDE: 80° 25' 0 " W ELEVATION (FT): GRND: 24 BARO: 39 TIME ZONE: EASTERN (UTC + 5) WBAN: 12843

ELEMENT		POR	JAN	FEB	MAR	APR	MAY	JUN	JUL	AUG	SEP	OCT	NOV	DEC	YEAR
TEMPERATURE °F	NORMAL DAILY MAXIMUM	30	72.5	73.5	77.5	81.5	85.2	88.2	90.1	90.0	88.3	84.0	78.7	74.1	82.0
	MEAN DAILY MAXIMUM	26	73.4	74.5	77.5	80.6	85.2	88.6	90.0	90.0	88.3	83.7	78.3	74.0	82.0
	HIGHEST DAILY MAXIMUM	17	88	89	91	94	99	99	99	98	97	94	92	87	99
	YEAR OF OCCURRENCE		1991	1997	1997	1999	2000	1998	1998	1999	1996	1989	1992	1991	MAY 2000
	MEAN OF EXTREME MAXS.	26	83.8	84.7	87.7	89.8	92.6	94.9	94.9	94.8	92.8	90.3	86.4	83.3	89.7
	NORMAL DAILY MINIMUM	30	50.7	51.9	56.9	61.0	66.2	70.8	72.1	72.5	71.9	66.9	60.0	53.3	62.9
	MEAN DAILY MINIMUM	26	54.1	54.8	58.4	62.0	67.7	72.1	73.4	73.7	73.4	69.0	61.4	54.9	64.6
	LOWEST DAILY MINIMUM	17	21	28	32	42	47	57	67	64	64	46	38	23	21
	YEAR OF OCCURRENCE		1985	1989	1986	2000	1999	1984	1989	1984	1997	1989	1993	1989	JAN 1985
	MEAN OF EXTREME MINS.	26	36.3	38.5	42.7	47.6	57.9	66.0	69.7	69.8	68.5	55.9	45.2	37.3	53.0
	NORMAL DRY BULB	30	61.6	62.7	67.2	71.3	75.8	79.5	81.1	81.3	80.1	75.5	69.3	63.7	72.4
	MEAN DRY BULB	26	63.8	64.6	68.1	71.2	76.4	80.2	81.7	81.9	80.9	76.4	69.9	64.4	73.3
	MEAN WET BULB	13	58.6	59.5	61.8	64.6	70.0	74.1	69.7	70.0	69.3	65.4	61.3	55.5	65.0
	MEAN DEW POINT	13	54.9	55.2	57.5	60.2	66.4	71.5	67.5	67.8	67.2	62.8	58.4	52.2	61.8
	NORMAL NO. DAYS WITH:														
MAXIMUM ≥ 90°	30	0.0	0.0	0.1	1.5	2.1	8.7	14.6	18.1	8.5	2.0	0.1	0.0	55.7	
MAXIMUM ≤ 32°	30	0.0	0.0	0.0	0.0	0.0	0.0	0.0	0.0	0.0	0.0	0.0	0.0	0.0	
MINIMUM ≤ 32°	30	0.8	0.4	0.2	0.1	0.0	0.0	0.0	0.0	0.0	0.0	0.0	0.6	2.1	
MINIMUM ≤ 0°	30	0.0	0.0	0.0	0.1	0.0	0.0	0.0	0.0	0.0	0.0	0.0	0.0	0.1	
H/C	NORMAL HEATING DEG. DAYS	30	186	138	56	7	0	0	0	0	0	0	34	127	548
	NORMAL COOLING DEG. DAYS	30	81	74	124	196	335	435	499	505	453	326	163	87	3278
RH	NORMAL (PERCENT)	30	76	73	72	68	72	77	79	79	78	76	77	75	75
	HOUR 01 LST	30	85	83	82	80	81	86	89	89	87	83	85	83	84
	HOUR 07 LST	30	87	87	86	84	84	86	89	92	90	87	87	86	87
	HOUR 13 LST	30	59	56	56	52	57	63	65	64	64	62	62	59	60
	HOUR 19 LST	30	75	72	69	65	70	76	78	78	79	77	78	78	75
S	PERCENT POSSIBLE SUNSHINE														
W/O	MEAN NO. DAYS WITH:														
	HEAVY FOG(VISBY≤1/4 MI) THUNDERSTORMS	17	2.8	1.8	1.6	1.0	0.8	0.6	0.2	0.1	0.3	0.7	0.9	1.7	12.5
		17	1.5	1.8	3.8	3.9	5.6	12.8	15.1	14.5	10.3	3.9	1.2	0.4	74.8
CLOUDINESS	MEAN: SUNRISE-SUNSET (OKTAS) MIDNIGHT-MIDNIGHT (OKTAS)														
	MEAN NO. DAYS WITH: CLEAR PARTLY CLOUDY CLOUDY														
PR	MEAN STATION PRESSURE(IN)	13	30.09	30.06	30.03	29.99	29.97	29.99	30.04	29.99	29.97	29.97	30.04	30.09	30.02
	MEAN SEA-LEVEL PRES. (IN)	17	30.11	30.10	30.06	30.01	30.00	30.02	30.07	30.02	30.00	30.00	30.06	30.11	30.05
WINDS	MEAN SPEED (MPH)	16	8.8	9.1	10.0	9.6	9.0	7.8	7.0	6.6	7.4	8.7	8.8	8.0	8.4
	PREVAIL.DIR(TENS OF DEGS)	17	32	36	13	13	11	11	11	11	06	05	36	32	11
	MAXIMUM 2-MINUTE: SPEED (MPH)														
	YEAR OF OCCURRENCE														
	PEAK GUST : SPEED (MPH) DIR. (TENS OF DEGS) YEAR OF OCCURRENCE														
PRECIPITATION	NORMAL (IN)	30	2.14	2.91	3.09	1.90	4.36	6.46	6.09	6.10	7.15	5.52	3.27	2.17	51.16
	MAXIMUM MONTHLY (IN)	17	8.91	6.91	12.78	10.45	6.88	20.73	11.55	11.63	11.34	12.37	11.76	5.94	20.73
	YEAR OF OCCURRENCE		1993	1998	1993	1997	1996	1992	2000	1998	1994	1986	1984	1994	JUN 1992
	MINIMUM MONTHLY (IN)	17	1.19	0.32	0.54	0.03	0.36	0.30	1.78	1.73	1.67	1.63	0.34	0.21	0.03
	YEAR OF OCCURRENCE		1985	1985	1999	1986	2000	1998	1992	1996	1988	1988	1989	1987	APR 1986
	MAXIMUM IN 24 HOURS (IN)	17	3.38	3.44	6.80	3.72	3.26	3.95	4.21	3.78	4.39	6.09	5.67	3.39	6.80
	YEAR OF OCCURRENCE		1991	1991	1993	1998	1993	1999	2000	1991	1990	2000	1994	1994	MAR 1993
	NORMAL NO. DAYS WITH:														
PRECIPITATION ≥ 0.01	30	7.6	7.1	7.9	4.7	9.3	11.7	13.5	12.5	15.3	12.3	9.1	6.9	117.9	
PRECIPITATION ≥ 1.00	30	0.2	0.8	0.6	0.5	1.0	1.3	2.1	1.6	2.0	1.2	1.2	0.6	13.1	
SNOWFALL	NORMAL (IN)	30	0.0	0.0	0.0	0.0	0.0	0.0	0.0	0.0	0.0	0.0	0.0	0.0	0.0
	MAXIMUM MONTHLY (IN)	17	0.0	0.0	T	T	T	T	T	0.0	0.0	0.0	0.0	0.0	T
	YEAR OF OCCURRENCE				1995	1994	1995	1996	1992						JUN 1996
	MAXIMUM IN 24 HOURS (IN)	17	0.0	0.0	T	T	T	T	T	0.0	0.0	0.0	0.0	0.0	T
	YEAR OF OCCURRENCE				1995	1994	1995	1996	1992						JUN 1996
	MAXIMUM SNOW DEPTH (IN)	25	0	0	0	0	0	0	0	0	0	0	0	0	0
YEAR OF OCCURRENCE															
NORMAL NO. DAYS WITH: SNOWFALL ≥ 1.0	30	0.0	0.0	0.0	0.0	0.0	0.0	0.0	0.0	0.0	0.0	0.0	0.0	0.0	

PRECIPITATION (inches) 2000 VERO BEACH, FL (VRB)

YEAR	JAN	FEB	MAR	APR	MAY	JUN	JUL	AUG	SEP	OCT	NOV	DEC	ANNUAL
1984	1.59	4.79	2.43	0.83	5.75	4.58	3.27	3.70	9.52	1.66	11.76	1.74	51.62
1985	1.19	0.32	1.31	4.69	3.23	5.42	6.06	6.64	9.70	3.56	2.23	2.19	46.54
1986	2.94	1.77	3.76	0.03	1.77	4.47	11.11	4.43	5.30	12.37	4.42	4.33	56.70
1987	1.65	1.31	4.86	0.05	3.07	3.95	7.34	3.57	5.37	6.71	6.28	0.21	44.37
1988	3.35	2.09	5.74	1.77	4.02	4.93	10.71	3.39	1.67	1.63	2.07	3.28	44.65
1989	1.83	1.69	3.88	2.86	1.96	3.40	2.94	5.02	5.45	5.99	0.34	2.45	37.81
1990	1.77	2.51	0.90	1.92	4.14	4.79	5.90	9.71	8.76	3.66	1.60	0.55	46.21
1991	7.05	5.76	7.18	6.82	4.00	5.38	8.90	11.49	3.09	5.21	1.02	0.76	66.66
1992	1.72	3.22	1.07	2.45	0.98	20.73	1.78	5.36	8.05	1.73	5.98	1.78	54.85
1993	8.91	1.99	12.78	1.42	4.85	2.08	4.53	3.35	5.59	5.77	4.56	1.07	56.90
1994	3.04	3.89	2.90	5.73	3.10	6.07	3.81	7.41	11.34	5.83	6.74	5.94	65.80
1995	1.59	2.18	2.80	2.05	1.27	6.48	5.38	10.93	5.53	6.91	0.80	0.50	46.42
1996	4.19	0.86	10.80	1.41	6.88	10.54	7.55	1.73	3.29	8.55	0.74	2.41	58.95
1997	3.41	2.73	3.98	10.45	3.11	8.24	5.54	10.25	4.97	2.19	2.65	4.67	62.19
1998	5.65	6.91	6.71	5.01	1.24	0.30	8.70	11.63	9.59	3.54	4.82	0.73	64.83
1999	2.33	0.98	0.54	1.25	4.02	11.95	2.78	7.17		11.66	2.88	1.35	
2000	2.88	1.15	2.41	1.95	0.36	6.55	11.55	4.53	7.83	7.15	0.50	0.42	47.28
POR= 17 YRS	3.25	2.60	4.36	2.98	3.16	6.47	6.29	6.46	6.18	5.48	3.44	1.98	52.65

WBAN : 12843

AVERAGE TEMPERATURE (°F) 2000 VERO BEACH, FL (VRB)

YEAR	JAN	FEB	MAR	APR	MAY	JUN	JUL	AUG	SEP	OCT	NOV	DEC	ANNUAL
1984	60.9	63.0	65.9	68.5	75.4	77.7	80.2	80.2	78.6	75.7	68.1	66.9	71.8
1985	57.0	63.9	68.3	70.3	74.8	81.5	80.6	81.8	79.3	80.1	73.3	61.6	72.7
1986	61.3	66.4	65.6	68.0	74.9	79.9	81.3	81.5	80.6	77.2	76.8	68.9	73.5
1987	60.3	64.5	66.7		75.7	81.4	82.3	82.6	81.7	74.0	71.1	66.1	
1988	62.1	60.7	65.5	71.4	74.8	80.2	81.5	81.7	82.1	75.0	72.5	64.6	72.7
1989	67.3	65.6	69.9	72.3	76.6	80.1	81.7	82.3	81.8	76.2	70.4	58.1	73.5
1990	68.1	70.3	70.2	72.8	78.9	80.5	81.8	82.2	81.4	78.4	71.1	68.2	75.3
1991	68.2	65.3	68.5	75.4	79.3	81.1	82.4	82.6	81.2	77.0	68.8	67.6	74.8
1992	61.4	66.1	66.9	70.8	74.3	80.6	82.7	81.8	81.2	75.6	73.0	66.1	73.4
1993	68.5	62.6	65.9	68.5	75.5	80.0	82.7	82.1	81.1	77.1	71.3	61.0	73.0
1994	64.8	68.9	69.1	74.6	76.6	81.0	81.1	80.6	80.1	77.0	74.1	67.2	74.6
1995	60.7	62.2	69.8	72.8	79.6	80.6	82.2	82.8	81.5	79.2	67.5	62.0	73.4
1996	62.7	61.4	64.9	69.6	76.9	79.2	81.9	81.4	82.5	76.7	72.0	65.5	72.9
1997	64.6	70.8	74.0	71.9	77.6	81.1	83.4	82.5	80.1	76.0	69.2	64.5	74.6
1998	65.2	63.2	64.8	71.5	76.4	83.5	82.6	82.1	81.2	78.1	71.8	68.4	74.1
1999	65.3	63.9	64.3	72.3	73.9	78.9	81.1	82.1	79.8	76.3	70.1	63.4	72.6
2000	61.4	62.9	69.7	69.9	77.4	79.9	81.4	80.7	80.8	74.4	67.0	63.2	72.4
POR= 17 YRS	63.6	64.9	67.5	71.3	76.3	80.5	81.9	81.8	80.8	76.7	71.0	64.9	73.4

HEATING DEGREE DAYS (base 65°F) 2000 VERO BEACH, FL (VRB)

YEAR	JUL	AUG	SEP	OCT	NOV	DEC	JAN	FEB	MAR	APR	MAY	JUN	TOTAL
1983-84							167	105	83	20	0	0	
1984-85	0	0	0	0	34	56	278	132	20	17	0	0	537
1985-86	0	0	0	0	14	175	156	62	109	16	0	0	532
1986-87	0	0	0	0	0	17	191	77	49		0	0	
1987-88	0	0	0	0	28	77	147	159	87	9	0	0	507
1988-89	0	0	0	0	5	90	22	105	41	3	0	0	266
1989-90	0	0	0	15	13	233	37	19	8	2	0	0	327
1990-91	0	0	0	4	5	44	52	76	43	0	0	0	224
1991-92	0	0	0	0	54	39	153	62	55	22	1	0	386
1992-93	0	0	0	0	26	55	37	95	65	14	0	0	292
1993-94	0	0	0	4	28	146	83	29	41	1	0	0	332
1994-95	0	0	0	0	0	54	163	136	6	6	0	0	365
1995-96	0	0	0	0	47	161	152	165	119	29	0	0	673
1996-97	0	0	0	0	11	61	108	27	0	7	0	0	214
1997-98	0	0	0	2	21	123	87	96	119	7	0	0	455
1998-99	0	0	0	0	3	44	83	93	75	11	7	0	316
1999-00	0	0	0	0	7	107	137	98	6	23	0	0	378
2000-	0	0	0	0	46	141							

WBAN : 12843

COOLING DEGREE DAYS (base 65°F) 2000 VERO BEACH, FL (VRB)

YEAR	JAN	FEB	MAR	APR	MAY	JUN	JUL	AUG	SEP	OCT	NOV	DEC	ANNUAL
1984	49	54	119	134	328	389	475	476	415	339	134	121	3033
1985	36	108	128	184	311	500	489	527	434	477	268	77	3539
1986	47	105	137	111	315	454	514	521	474	384	362	143	3567
1987	54	70	109		340	495	542	553	507	286	217	120	
1988	62	43	113	207	311	464	517	524	522	318	238	84	3403
1989	101	127	198	228	366	461	523	542	509	369	183	26	3633
1990	138	172	174	243	439	474	527	540	500	429	193	150	3979
1991	156	89	159	316	449	490	547	553	495	377	174	125	3930
1992	48	101	120	198	299	474	556	523	492	335	274	96	3516
1993	153	33	100	127	332	457	554	538	491	385	224	29	3423
1994	84	144	176	298	366	486	506	490	459	379	279	128	3795
1995	39	63	160	248	461	475	541	558	501	448	132	78	3704
1996	89	66	118	170	374	435	528	516	531	371	229	84	3511
1997	102	193	288	221	396	490	578	550	462	350	154	114	3898
1998	99	54	115	211	361	559	553	538	493	413	215	156	3767
1999	99	68	59	235	291	423	508	536	452	358	165	63	3257
2000	34	44	155	175	389	456	516	492	483	298	112	93	3247

SNOWFALL (inches) 2000 VERO BEACH, FL (VRB)

YEAR	JUL	AUG	SEP	OCT	NOV	DEC	JAN	FEB	MAR	APR	MAY	JUN	TOTAL
1983-84							0.0	0.0	0.0	0.0	0.0	0.0	
1984-85	0.0	0.0	0.0	0.0	0.0	0.0	0.0	0.0	0.0	0.0	0.0	0.0	0.0
1985-86	0.0	0.0	0.0	0.0	0.0	0.0	0.0	0.0	0.0	0.0	0.0	0.0	0.0
1986-87	0.0	0.0	0.0	0.0	0.0	0.0	0.0	0.0	0.0	0.0	0.0	0.0	0.0
1987-88	0.0	0.0	0.0	0.0	0.0	0.0	0.0	0.0	0.0	0.0	0.0	0.0	0.0
1988-89	0.0	0.0	0.0	0.0	0.0	0.0	0.0	0.0	0.0	0.0	0.0	0.0	0.0
1989-90	0.0	0.0	0.0	0.0	0.0	0.0	0.0	0.0	0.0	0.0	0.0	T	T
1990-91	0.0	0.0	0.0	0.0	0.0	0.0	0.0	0.0	0.0	0.0	0.0	0.0	0.0
1991-92	0.0	0.0	0.0	0.0	0.0	0.0	0.0	0.0	0.0	0.0	0.0	0.0	0.0
1992-93	T	0.0	0.0	0.0	0.0	0.0	0.0	0.0	0.0	0.0	0.0	0.0	T
1993-94	0.0	0.0	0.0	0.0	0.0	0.0	0.0	0.0	0.0	T	T	0.0	T
1994-95	0.0	0.0	0.0	0.0	0.0	0.0	0.0	0.0	T	0.0	T	0.0	T
1995-96	0.0	0.0	0.0	0.0	0.0	0.0	0.0	0.0	0.0	0.0	T	T	T
1996-97	0.0	0.0	0.0	0.0	0.0	0.0	0.0	0.0	0.0	0.0	0.0	0.0	0.0
1997-98	0.0	0.0	0.0	0.0	0.0	0.0	0.0	0.0	0.0	0.0	0.0	0.0	0.0
1998-99	0.0	0.0	0.0	0.0	0.0	0.0	0.0	0.0	0.0	0.0	0.0	0.0	0.0
1999-00	0.0	0.0	0.0	0.0	0.0	0.0	0.0	0.0	0.0	0.0	0.0	0.0	0.0
2000-	0.0	0.0	0.0	0.0	0.0	0.0	0.0	0.0	0.0	0.0	0.0	0.0	0.0
POR= 16 YRS	T	0.0	0.0	0.0	0.0	0.0	0.0	0.0	T	T	T	T	T

WBAN : 12843

REFERENCE NOTES :

<p>PAGE 1: THE TEMPERATURE GRAPH SHOWS NORMAL MAXIMUM AND NORMAL MINIMUM DAILY TEMPERATURES (SOLID CURVES) AND THE ACTUAL DAILY HIGH AND LOW TEMPERATURES (VERTICAL BARS).</p> <p>PAGE 2 AND 3: H/C INDICATES HEATING AND COOLING DEGREE DAYS. RH INDICATES RELATIVE HUMIDITY W/O INDICATES WEATHER AND OBSTRUCTIONS S INDICATES SUNSHINE. PR INDICATES PRESSURE. CLOUDINESS ON PAGE 3 IS THE SUM OF THE CEILOMETER AND SATELLITE DATA NOT TO EXCEED EIGHT EIGHTHS(OKTAS).</p> <p>GENERAL: T INDICATES TRACE PRECIPITATION, AN AMOUNT GREATER THAN ZERO BUT LESS THAN THE LOWEST REPORTABLE VALUE. + INDICATES THE VALUE ALSO OCCURS ON EARLIER DATES. BLANK ENTRIES DENOTE MISSING OR UNREPORTED DATA. NORMALS ARE 30-YEAR AVERAGES (1961 - 1990). ASOS INDICATES AUTOMATED SURFACE OBSERVING SYSTEM. PM INDICATES THE LAST DAY OF THE PREVIOUS MONTH. POR (PERIOD OF RECORD) BEGINS WITH THE JANUARY DATA MONTH AND IS THE NUMBER OF YEARS USED TO COMPUTE THE MEAN. INDIVIDUAL MONTHS WITHIN THE POR MAY BE MISSING. WHEN THE POR FOR A NORMAL IS LESS THAN 30 YEARS, THE NORMAL IS PROVISIONAL AND IS BASED ON THE NUMBER OF YEARS INDICATED. 0.* OR * INDICATES THE VALUE OR MEAN-DAYS-WITH IS BETWEEN 0.00 AND 0.05. CLOUDINESS FOR ASOS STATIONS DIFFERS FROM THE NON-ASOS OBSERVATION TAKEN BY A HUMAN OBSERVER. ASOS STATION CLOUDINESS IS BASED ON TIME-AVERAGED CEILOMETER DATA FOR CLOUDS AT OR BELOW 12,000 FEET AND ON SATELLITE DATA FOR CLOUDS ABOVE 12,000 FEET. THE NUMBER OF DAYS WITH CLEAR, PARTLY CLOUDY, AND CLOUDY CONDITIONS FOR ASOS STATIONS IS THE SUM OF THE CEILOMETER AND SATELLITE DATA FOR THE SUNRISE TO SUNSET PERIOD.</p>	<p>GENERAL CONTINUED: CLEAR INDICATES 0 - 2 OKTAS, PARTLY CLOUDY INDICATES 3 - 6 OKTAS, AND CLOUDY INDICATES 7 OR 8 OKTAS. WHEN AT LEAST ONE OF THE ELEMENTS (CEILOMETER OR SATELLITE) IS MISSING, THE DAILY CLOUDINESS IS NOT COMPUTED. WIND DIRECTION IS RECORDED IN TENS OF DEGREES (2 DIGITS) CLOCKWISE FROM TRUE NORTH. "00" INDICATES CALM. "36" INDICATES TRUE NORTH. RESULTANT WIND IS THE VECTOR AVERAGE OF THE SPEED AND DIRECTION. AVERAGE TEMPERATURE IS THE SUM OF THE MEAN DAILY MAXIMUM AND MINIMUM TEMPERATURE DIVIDED BY 2. SNOWFALL DATA COMPRISE ALL FORMS OF FROZEN PRECIPITATION, INCLUDING HAIL. A HEATING (COOLING) DEGREE DAY IS THE DIFFERENCE BETWEEN THE AVERAGE DAILY TEMPERATURE AND 65° F. DRY BULB IS THE TEMPERATURE OF THE AMBIENT AIR. DEW POINT IS THE TEMPERATURE TO WHICH THE AIR MUST BE COOLED TO ACHIEVE 100 PERCENT RELATIVE HUMIDITY. WET BULB IS THE TEMPERATURE THE AIR WOULD HAVE IF THE MOISTURE CONTENT WAS INCREASED TO 100 PERCENT RELATIVE HUMIDITY.</p> <p>ON JULY 1, 1996, THE NATIONAL WEATHER SERVICE BEGAN USING THE "METAR" OBSERVATION CODE THAT WAS ALREADY EMPLOYED BY MOST OTHER NATIONS OF THE WORLD. THE MOST NOTICEABLE DIFFERENCE IN THIS ANNUAL PUBLICATION WILL BE THE CHANGE IN UNITS FROM TENTHS TO EIGHTS(OKTAS) FOR REPORTING THE AMOUNT OF SKY COVER.</p>
---	--

2000
VERO BEACH,
FLORIDA (VRB)

Vero Beach is located on the southeast coast of Florida, separated from the Atlantic Ocean by the Inland Waterway and a narrow island offshore. Its climate is strongly influenced by this maritime location. Temperatures in summer rarely reach 100 degrees. The average maximum temperature in July and August is about 90 degrees. In winter the average minimum temperature is slightly above 50 degrees with record lows near 20 degrees. On average, only one day a year experiences freezing temperatures, usually in January.

Rainfall occurs in all seasons but most abundantly in summer when showers are common. Thunderstorms are present approximately 70 to 80 days a year. Monthly precipitation amounts in winter are about half those in summer, and are due in part to cold frontal systems traversing the region. Throughout

the year, relative humidity at 7 A.M. tends to range from 80 to 90 percent. The 1 P.M. humidity ranges from 60 to 70 percent with lower values occurring in midafternoon when temperatures are the highest.

Vero Beach lies at the northern boundary of a tropical rainy region. Within that region during summer and fall there may be hurricane activity. Of those hurricanes that pass close to Vero Beach, many move northward offshore, some cross the peninsula of Florida moving generally eastward but being weakened by their passage over land, and some enter the coastal area from the Atlantic Ocean. The frequency of the latter group has been small, about 5 in 114 years.

STATION LOCATION

VERO BEACH, FLORIDA

LOCATION	Occupied From	Occupied To	Airline Distances and Directions from previous Location	LATITUDE NORTH	LONGITUDE WEST	ELEVATION ABOVE										AUTOMATIC OBSERVING EQUIPMENT * REMARKS
						GROUND										
						SEA LEVEL GROUND SITE	WIND INSTRUMENT	EXTREME THERMOMETERS	PSYCHROMETER	SUNSHINE SWITCH	RAINING GAUGE BUCKET	WEIGHING RAIN GAGE	8 INCH RAIN GAGE	HYGROMETER		
AIRPORT Hangar Building Municipal Airport	8/1/34	Present	NA	27° 39'	80° 25'	a24	b22	NA	NA	NA	NA	NA	d17	c5	NA	a - Effective 11/4/47. b - Effective 10/14/64. c - Effective 11/24/64. d - Effective 4/15/65. First LCD published 1/1984. First LCD Annual 1986.

SUBSCRIPTION:
 Price and ordering information available through : National ClimaticDataCenter, Federal building, Asheville, North Carolina 28801.

INQUIRIES/COMMENTS CALL: Toll Free (866) 742-3322

OFFICIAL BUSINESS
 PENALTY FOR PRIVATE USE \$300
 CHANGE SERVICE REQUESTED

FIRST CLASS
POSTAGE & FEES PAID
 United States Department of Commerce
 NOAA Permit No. G - 19

NCDC Subscription Services Center
 310 State Route 956 Building 300
 Rocket Center, WV 26726