

2000

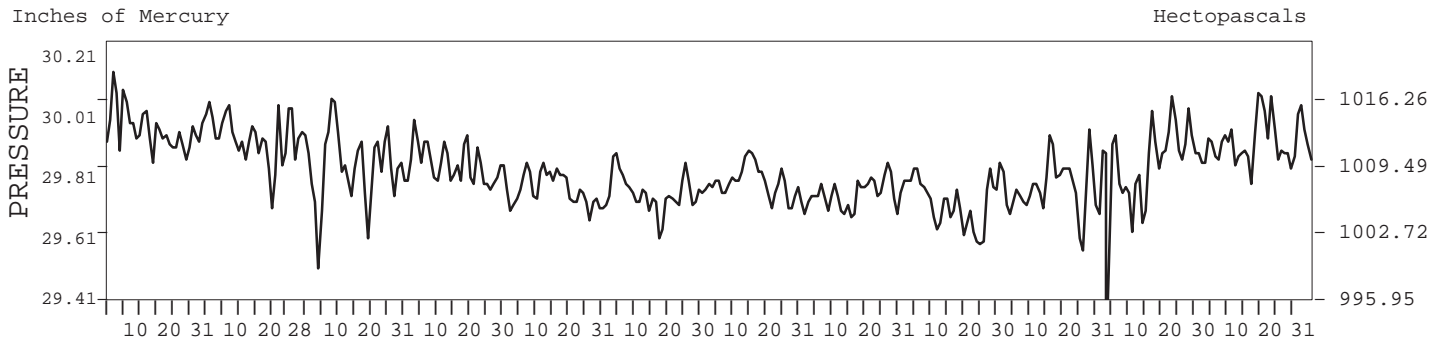
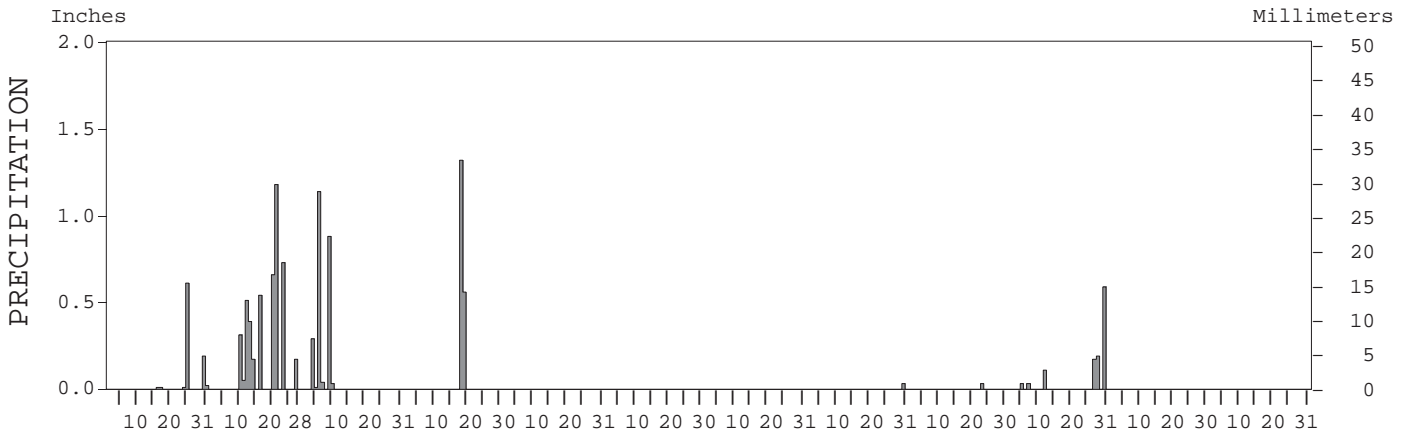
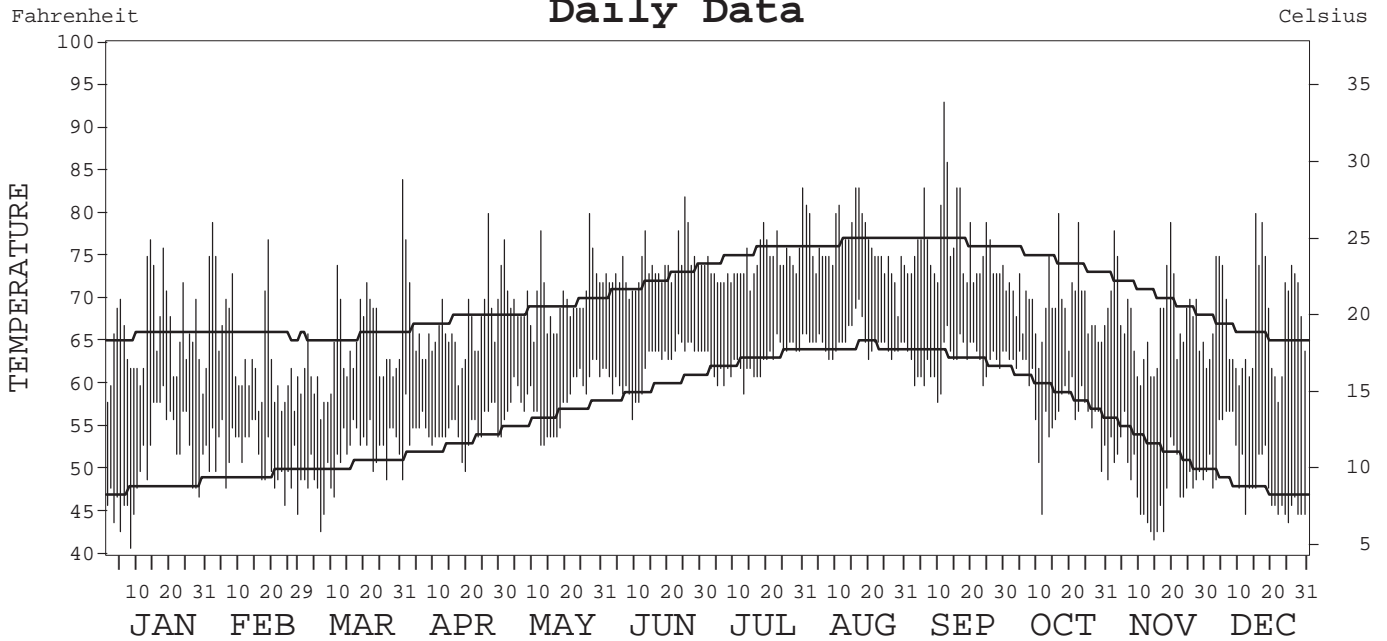
# LOCAL CLIMATOLOGICAL DATA ANNUAL SUMMARY WITH COMPARATIVE DATA



LOS ANGELES, CALIFORNIA  
INTERNATIONAL AIRPORT (LAX)

ISSN 0198-0912

## Daily Data



I CERTIFY THAT THIS IS AN OFFICIAL PUBLICATION OF THE NATIONAL OCEANIC AND ATMOSPHERIC ADMINISTRATION, AND IS COMPILED FROM RECORDS ON FILE AT THE NATIONAL CLIMATIC DATA CENTER.

*Thomas R. Karl*

|   |   |   |   |
|---|---|---|---|
| NATIONAL<br>OCEANIC AND<br>ATMOSPHERIC ADMINISTRATION | NATIONAL<br>ENVIRONMENTAL SATELLITE, DATA,<br>AND INFORMATION SERVICE | NATIONAL<br>CLIMATIC DATA CENTER<br>ASHEVILLE, NORTH CAROLINA | DIRECTOR<br>NATIONAL CLIMATIC DATA CENTER |
|---|---|---|---|

# METEOROLOGICAL DATA FOR 2000

## LOS ANGELES, CA (LAX)

LATITUDE: 33° 56' 17" N      LONGITUDE: 118° 24' 20" W      ELEVATION (FT): GRND: 152      BARO: 152      TIME ZONE: PACIFIC (UTC + 8)      WBAN: 23174

|                      | ELEMENT                       | JAN   | FEB   | MAR   | APR   | MAY   | JUN   | JUL   | AUG   | SEP   | OCT  | NOV   | DEC     | YEAR      |   |
|----------------------|-------------------------------|-------|-------|-------|-------|-------|-------|-------|-------|-------|------|-------|---------|-----------|---|
| TEMPERATURE °F       | MEAN DAILY MAXIMUM            | 65.8  | 64.1  | 64.5  | 67.1  | 70.3  | 73.8  | 74.5  | 76.4  | 76.6  | 69.4 | 67.5  | 67.5    | 69.8      |   |
|                      | HIGHEST DAILY MAXIMUM         | 77    | 79    | 84    | 80    | 80    | 82    | 83    | 83    | 93    | 80   | 79    | 80      | 93        |   |
|                      | DATE OF OCCURRENCE            | 14    | 02    | 31    | 26    | 27    | 25    | 31    | 17+   | 12    | 17   | 20    | 16      | SEP 12    |   |
|                      | MEAN DAILY MINIMUM            | 51.0  | 51.4  | 51.3  | 54.8  | 58.2  | 62.1  | 62.8  | 65.1  | 62.7  | 57.9 | 48.7  | 49.3    | 56.3      |   |
|                      | LOWEST DAILY MINIMUM          | 41    | 45    | 43    | 50    | 53    | 56    | 59    | 63    | 58    | 45   | 42    | 44      | 41        |   |
|                      | DATE OF OCCURRENCE            | 08    | 28    | 06    | 19    | 13+   | 09    | 13    | 27+   | 10    | 12   | 15    | 26      | JAN 08    |   |
|                      | AVERAGE DRY BULB              | 58.4  | 57.8  | 57.9  | 61.0  | 64.3  | 68.0  | 68.7  | 70.8  | 69.7  | 63.7 | 58.1  | 58.4    | 63.1      |   |
|                      | MEAN WET BULB                 | 52.4  | 52.7  | 52.8  | 56.6  | 59.7  | 62.6  | 63.1  | 65.6  | 63.2  | 58.9 | 50.5  | 51.1    | 57.4      |   |
|                      | MEAN DEW POINT                | 46.1  | 48.3  | 48.1  | 53.2  | 56.2  | 59.6  | 60.1  | 63.0  | 59.5  | 55.9 | 42.0  | 43.3    | 52.9      |   |
|                      | NUMBER OF DAYS WITH:          |       |       |       |       |       |       |       |       |       |      |       |         |           |   |
|                      | MAXIMUM ≥ 90°                 | 0     | 0     | 0     | 0     | 0     | 0     | 0     | 0     | 1     | 0    | 0     | 0       | 0         | 1 |
|                      | MAXIMUM ≤ 32°                 | 0     | 0     | 0     | 0     | 0     | 0     | 0     | 0     | 0     | 0    | 0     | 0       | 0         | 0 |
|                      | MINIMUM ≤ 32°                 | 0     | 0     | 0     | 0     | 0     | 0     | 0     | 0     | 0     | 0    | 0     | 0       | 0         | 0 |
| MINIMUM ≤ 0°         | 0                             | 0     | 0     | 0     | 0     | 0     | 0     | 0     | 0     | 0     | 0    | 0     | 0       | 0         |   |
| H/C                  | HEATING DEGREE DAYS           | 200   | 207   | 214   | 121   | 39    | 1     | 0     | 0     | 0     | 59   | 200   | 198     | 1239      |   |
|                      | COOLING DEGREE DAYS           | 4     | 3     | 2     | 7     | 23    | 98    | 118   | 182   | 146   | 25   | 2     | 2       | 612       |   |
| RH                   | MEAN (PERCENT)                | 69    | 75    | 74    | 79    | 79    | 78    | 77    | 79    | 74    | 79   | 60    | 66      | 74        |   |
|                      | HOUR 04 LST                   | 75    | 82    | 84    | 85    | 84    | 86    | 86    | 88    | 84    | 87   | 69    | 75      | 82        |   |
|                      | HOUR 10 LST                   | 61    | 71    | 65    | 71    | 71    | 70    | 68    | 71    | 63    | 70   | 47    | 55      | 65        |   |
|                      | HOUR 16 LST                   | 69    | 72    | 71    | 73    | 75    | 71    | 69    | 72    | 68    | 73   | 56    | 59      | 69        |   |
|                      | HOUR 22 LST                   | 73    | 77    | 77    | 81    | 81    | 83    | 82    | 84    | 81    | 80   | 66    | 71      | 78        |   |
| S                    | PERCENT POSSIBLE SUNSHINE     |       |       |       |       |       |       |       |       |       |      |       |         |           |   |
| W/O                  | NUMBER OF DAYS WITH:          |       |       |       |       |       |       |       |       |       |      |       |         |           |   |
|                      | HEAVY FOG (VISBY ≤ 1/4 MI)    | 1     | 1     | 3     | 3     | 0     | 0     | 0     | 0     | 4     | 2    | 4     | 8       | 26        |   |
|                      | THUNDERSTORMS                 | 0     | 0     | 0     | 1     | 0     | 0     | 0     | 0     | 0     | 0    | 0     | 0       | 1         |   |
| CLOUDINESS           | SUNRISE-SUNSET: (OKTAS)       |       |       |       |       |       |       |       |       |       |      |       |         |           |   |
|                      | CEILOMETER (≤ 12,000 FT.)     |       |       |       |       |       |       |       |       |       |      |       |         |           |   |
|                      | SATELLITE (> 12,000 FT.)      |       |       |       |       |       |       |       |       |       |      |       |         |           |   |
|                      | MIDNIGHT-MIDNIGHT: (OKTAS)    |       |       |       |       |       |       |       |       |       |      |       |         |           |   |
|                      | CEILOMETER (≤ 12,000 FT.)     |       |       |       |       |       |       |       |       |       |      |       |         |           |   |
|                      | SATELLITE (> 12,000 FT.)      |       |       |       |       |       |       |       |       |       |      |       |         |           |   |
| NUMBER OF DAYS WITH: |                               |       |       |       |       |       |       |       |       |       |      |       |         |           |   |
| CLEAR                |                               |       |       |       |       |       |       |       |       |       |      |       |         |           |   |
| PARTLY CLOUDY        |                               |       |       |       |       |       |       |       |       |       |      |       |         |           |   |
| CLOUDY               |                               |       |       |       |       |       |       |       |       |       |      |       |         |           |   |
| PR                   | MEAN STATION PRESS. (IN.)     | 29.97 | 29.94 | 29.85 | 29.85 | 29.77 | 29.76 | 29.79 | 29.76 | 29.72 |      | 29.87 | 29.93   |           |   |
|                      | MEAN SEA-LEVEL PRESS. (IN.)   |       | 30.10 | 30.01 | 30.01 | 29.93 | 29.92 | 29.95 | 29.92 | 29.88 |      | 30.03 | 30.09   |           |   |
| WINDS                | RESULTANT SPEED (MPH)         | 1.8   | 2.3   | 3.0   | 5.5   | 5.3   | 5.8   | 4.2   | 5.2   | 4.1   | 4.6  | 1.6   | 1.8     | 3.7       |   |
|                      | RES. DIR. (TENS OF DEGS.)     | 25    | 23    | 24    | 24    | 24    | 24    | 22    | 24    | 23    | 25   | 25    | 25      | 24        |   |
|                      | MEAN SPEED (MPH)              | 6.2   | 8.3   | 8.0   | 8.6   | 8.2   | 8.7   | 8.2   | 7.8   | 7.5   | 7.6  | 6.6   | 5.7     | 7.6       |   |
|                      | PREVAIL. DIR. (TENS OF DEGS.) | 25    | 26    | 25    | 24    | 25    | 25    | 25    | 25    | 25    | 25   | 25    | 25      | 25        |   |
|                      | MAXIMUM 2-MINUTE WIND:        |       |       |       |       |       |       |       |       |       |      |       |         |           |   |
|                      | SPEED (MPH)                   | 28    | 30    | 33    | 31    | 30    | 28    | 22    | 23    | 21    | 26   | 26    | 26      | 33        |   |
|                      | DIR. (TENS OF DEGS.)          | 26    | 14    | 26    | 26    | 26    | 25    | 25    | 24    | 26    | 25   | 25    | 26      | 26        |   |
|                      | DATE OF OCCURRENCE            | 26    | 20    | 31+   | 01    | 11    | 08    | 13    | 10    | 02    | 10   | 10    | 12      | MAR 31+   |   |
|                      | MAXIMUM 5-SECOND WIND:        |       |       |       |       |       |       |       |       |       |      |       |         |           |   |
|                      | SPEED (MPH)                   | 33    | 38    | 38    | 36    | 33    | 31    | 26    | 26    | 24    | 30   | 30    | 29      | 38        |   |
| DIR. (TENS OF DEGS.) | 27                            | 13    | 26    | 27    | 25    | 25    | 24    | 24    | 25    | 26    | 24   | 27    | 26      |           |   |
| DATE OF OCCURRENCE   | 26                            | 20    | 31+   | 01    | 11    | 08    | 13    | 10    | 02    | 10    | 10   | 12    | MAR 31+ |           |   |
| PRECIPITATION        | WATER EQUIVALENT:             |       |       |       |       |       |       |       |       |       |      |       |         |           |   |
|                      | TOTAL (IN.)                   | 0.85  | 4.71  | 2.39  | 1.88  | T     | 0.00  | 0.00  | 0.03  | 0.03  | 1.12 | 0.00  | T       | 11.01     |   |
|                      | GREATEST 24-HOUR (IN.)        | 0.62  | 1.65  | 1.14  | 1.88  | T     | 0.00  | 0.00  | 0.03  | 0.03  | 0.59 | 0.00  | T       | 1.88      |   |
|                      | DATE OF OCCURRENCE            | 24-25 | 20-21 | 05    | 17-18 | 25+   |       |       | 29    | 22    | 29   |       | 08+     | APR 17-18 |   |
|                      | NUMBER OF DAYS WITH:          |       |       |       |       |       |       |       |       |       |      |       |         |           |   |
|                      | PRECIPITATION ≥ 0.01          | 6     | 10    | 6     | 2     | 0     | 0     | 0     | 1     | 1     | 6    | 0     | 0       | 32        |   |
| PRECIPITATION ≥ 0.10 | 2                             | 9     | 3     | 2     | 0     | 0     | 0     | 0     | 0     | 4     | 0    | 0     | 20      |           |   |
| PRECIPITATION ≥ 1.00 | 0                             | 1     | 1     | 1     | 0     | 0     | 0     | 0     | 0     | 0     | 0    | 0     | 3       |           |   |
| SNOWFALL             | SNOW, ICE PELLETS, HAIL:      |       |       |       |       |       |       |       |       |       |      |       |         |           |   |
|                      | TOTAL (IN.)                   |       |       |       |       |       |       |       |       |       |      |       |         |           |   |
|                      | GREATEST 24-HOUR (IN.)        |       |       |       |       |       |       |       |       |       |      |       |         |           |   |
|                      | DATE OF OCCURRENCE            |       |       |       |       |       |       |       |       |       |      |       |         |           |   |
|                      | NUMBER OF DAYS WITH:          |       |       |       |       |       |       |       |       |       |      |       |         |           |   |
| SNOWFALL ≥ 1.0       |                               |       |       |       |       |       |       |       |       |       |      |       |         |           |   |

# NORMALS, MEANS, AND EXTREMES

## LOS ANGELES, CA (LAX)

LATITUDE: 33° 56' 17" N      LONGITUDE: 118° 24' 20" W      ELEVATION (FT): GRND: 152      BARO: 152      TIME ZONE: PACIFIC (UTC + 8)      WBAN: 23174

| ELEMENT               |                             | POR  | JAN   | FEB   | MAR   | APR   | MAY   | JUN   | JUL   | AUG   | SEP   | OCT   | NOV   | DEC      | YEAR     |
|-----------------------|-----------------------------|------|-------|-------|-------|-------|-------|-------|-------|-------|-------|-------|-------|----------|----------|
| TEMPERATURE °F        | NORMAL DAILY MAXIMUM        | 30   | 65.7  | 65.9  | 65.5  | 67.4  | 69.0  | 71.9  | 75.3  | 76.6  | 76.6  | 74.4  | 70.3  | 65.9     | 70.4     |
|                       | MEAN DAILY MAXIMUM          | 54   | 64.8  | 65.5  | 65.3  | 67.6  | 69.3  | 72.1  | 75.3  | 76.6  | 76.3  | 74.1  | 70.4  | 66.3     | 70.3     |
|                       | HIGHEST DAILY MAXIMUM       | 65   | 88    | 92    | 95    | 102   | 97    | 104   | 97    | 98    | 110   | 106   | 101   | 94       | 110      |
|                       | YEAR OF OCCURRENCE          |      | 1986  | 1963  | 1988  | 1989  | 1979  | 1981  | 1985  | 1955  | 1963  | 1961  | 1966  | 1958     | SEP 1963 |
|                       | MEAN OF EXTREME MAXS.       | 54   | 80.1  | 79.7  | 79.0  | 81.7  | 80.4  | 81.9  | 84.0  | 86.0  | 90.8  | 91.1  | 85.3  | 80.4     | 83.4     |
|                       | NORMAL DAILY MINIMUM        | 30   | 47.8  | 49.3  | 50.5  | 52.8  | 56.3  | 59.5  | 62.8  | 64.2  | 63.2  | 59.2  | 52.8  | 47.9     | 55.5     |
|                       | MEAN DAILY MINIMUM          | 54   | 47.3  | 49.0  | 50.3  | 53.0  | 56.3  | 59.6  | 62.7  | 63.9  | 62.7  | 58.7  | 52.3  | 48.0     | 55.3     |
|                       | LOWEST DAILY MINIMUM        | 65   | 23    | 32    | 34    | 39    | 43    | 48    | 49    | 51    | 47    | 41    | 34    | 32       | 23       |
|                       | YEAR OF OCCURRENCE          |      | 1937  | 1942  | 1939  | 1942  | 1938  | 1950  | 1942  | 1948  | 1948  | 1942  | 1939  | 1968     | JAN 1937 |
|                       | MEAN OF EXTREME MINS.       | 54   | 38.6  | 41.8  | 43.2  | 46.7  | 50.9  | 54.7  | 58.7  | 59.7  | 57.5  | 51.7  | 44.0  | 39.7     | 48.9     |
|                       | NORMAL DRY BULB             | 30   | 56.8  | 57.6  | 58.0  | 60.1  | 62.7  | 65.7  | 69.1  | 70.5  | 69.9  | 66.8  | 61.6  | 56.9     | 63.0     |
|                       | MEAN DRY BULB               | 54   | 56.0  | 57.3  | 57.9  | 60.3  | 62.8  | 65.8  | 69.0  | 70.3  | 69.5  | 66.3  | 61.4  | 57.0     | 62.8     |
|                       | MEAN WET BULB               | 17   | 50.5  | 51.6  | 53.5  | 55.5  | 58.0  | 60.6  | 63.8  | 64.6  | 63.6  | 59.8  | 53.7  | 49.4     | 57.1     |
|                       | MEAN DEW POINT              | 17   | 43.3  | 45.3  | 48.6  | 50.5  | 54.2  | 57.2  | 60.8  | 61.5  | 60.2  | 55.1  | 46.1  | 40.2     | 51.9     |
|                       | NORMAL NO. DAYS WITH:       |      |       |       |       |       |       |       |       |       |       |       |       |          |          |
| MAXIMUM ≥ 90°         | 30                          | 0.0  | *     | 0.1   | 0.4   | 0.2   | 0.5   | 0.2   | 0.2   | 1.8   | 1.6   | 0.4   | *     | 5.4      |          |
| MAXIMUM ≤ 32°         | 30                          | 0.0  | 0.0   | 0.0   | 0.0   | 0.0   | 0.0   | 0.0   | 0.0   | 0.0   | 0.0   | 0.0   | 0.0   | 0.0      |          |
| MINIMUM ≤ 32°         | 30                          | *    | 0.0   | 0.0   | 0.0   | 0.0   | 0.0   | 0.0   | 0.0   | 0.0   | 0.0   | 0.0   | *     | 0.0      |          |
| MINIMUM ≤ 0°          | 30                          | 0.0  | 0.0   | 0.0   | 0.0   | 0.0   | 0.0   | 0.0   | 0.0   | 0.0   | 0.0   | 0.0   | 0.0   | 0.0      |          |
| H/C                   | NORMAL HEATING DEG. DAYS    | 30   | 258   | 215   | 224   | 158   | 96    | 54    | 9     | 5     | 22    | 32    | 127   | 258      | 1458     |
|                       | NORMAL COOLING DEG. DAYS    | 30   | 0     | 8     | 7     | 11    | 25    | 75    | 136   | 176   | 169   | 88    | 25    | 7        | 727      |
| RH                    | NORMAL (PERCENT)            | 30   | 63    | 68    | 70    | 71    | 74    | 76    | 77    | 77    | 74    | 70    | 66    | 63       | 71       |
|                       | HOUR 04 LST                 | 30   | 70    | 75    | 78    | 80    | 83    | 85    | 86    | 85    | 83    | 78    | 72    | 69       | 79       |
|                       | HOUR 10 LST                 | 30   | 55    | 59    | 60    | 60    | 66    | 68    | 68    | 68    | 64    | 59    | 54    | 53       | 61       |
|                       | HOUR 16 LST                 | 30   | 59    | 62    | 65    | 64    | 66    | 67    | 68    | 68    | 66    | 64    | 61    | 60       | 64       |
|                       | HOUR 22 LST                 | 30   | 69    | 72    | 74    | 76    | 80    | 82    | 83    | 82    | 80    | 76    | 71    | 68       | 76       |
| S                     | PERCENT POSSIBLE SUNSHINE   |      |       |       |       |       |       |       |       |       |       |       |       |          |          |
| W/O                   | MEAN NO. DAYS WITH:         |      |       |       |       |       |       |       |       |       |       |       |       |          |          |
|                       | HEAVY FOG (VISBY ≤ 1/4 MI)  | 68   | 4.2   | 3.2   | 3.0   | 2.3   | 1.3   | 1.3   | 1.6   | 2.1   | 3.2   | 4.2   | 4.5   | 4.7      | 35.6     |
|                       | THUNDERSTORMS               | 58   | 0.4   | 0.5   | 0.9   | 0.4   | 0.1   | 0.1   | 0.2   | 0.3   | 0.4   | 0.3   | 0.3   | 0.3      | 4.2      |
| CLOUDINESS            | MEAN:                       |      |       |       |       |       |       |       |       |       |       |       |       |          |          |
|                       | SUNRISE-SUNSET (OKTAS)      | 48   | 4.2   | 4.2   | 4.2   | 3.8   | 4.1   | 3.9   | 3.2   | 2.9   | 3.3   | 3.5   | 3.5   | 3.8      | 3.7      |
|                       | MIDNIGHT-MIDNIGHT (OKTAS)   | 32   | 3.9   | 4.2   | 4.0   | 3.5   | 4.2   | 4.1   | 3.6   | 3.3   | 3.6   | 3.6   | 3.4   | 3.6      | 3.7      |
|                       | MEAN NO. DAYS WITH:         |      |       |       |       |       |       |       |       |       |       |       |       |          |          |
| CLEAR                 | 62                          | 12.0 | 11.0  | 11.5  | 11.4  | 10.4  | 9.9   | 12.4  | 13.8  | 13.2  | 13.0  | 14.4  | 12.7  | 145.7    |          |
| PARTLY CLOUDY         | 62                          | 8.0  | 6.5   | 8.7   | 9.2   | 10.8  | 11.3  | 12.9  | 11.7  | 10.3  | 9.8   | 7.7   | 8.3   | 115.2    |          |
| CLOUDY                | 62                          | 10.9 | 10.7  | 10.8  | 9.3   | 9.8   | 8.9   | 5.2   | 5.0   | 6.1   | 7.8   | 7.5   | 9.6   | 101.6    |          |
| PR                    | MEAN STATION PRESSURE (IN)  | 28   | 29.96 | 29.94 | 29.90 | 29.87 | 29.83 | 29.81 | 29.82 | 29.81 | 29.80 | 29.86 | 29.92 | 29.96    | 29.87    |
|                       | MEAN SEA-LEVEL PRES. (IN)   | 16   | 30.07 | 30.05 | 30.02 | 29.96 | 29.94 | 29.91 | 29.93 | 29.92 | 29.90 | 29.96 | 30.03 | 30.07    | 29.98    |
| WINDS                 | MEAN SPEED (MPH)            | 52   | 6.7   | 7.4   | 8.2   | 8.5   | 8.4   | 8.0   | 7.8   | 7.8   | 7.3   | 7.0   | 6.8   | 6.6      | 7.5      |
|                       | PREVAIL. DIR (TENS OF DEGS) | 37   | 25    | 25    | 25    | 25    | 25    | 25    | 25    | 25    | 25    | 25    | 26    | 26       | 25       |
|                       | MAXIMUM 2-MINUTE:           |      |       |       |       |       |       |       |       |       |       |       |       |          |          |
|                       | SPEED (MPH)                 | 3    | 28    | 37    | 38    | 45    | 30    | 28    | 22    | 23    | 23    | 26    | 33    | 31       | 45       |
|                       | DIR. (TENS OF DEGS)         |      | 26    | 26    | 27    | 26    | 26    | 25    | 25    | 24    | 23    | 25    | 31    | 34       | 26       |
|                       | YEAR OF OCCURRENCE          |      | 2000  | 1998  | 1998  | 1999  | 2000  | 2000  | 2000  | 2000  | 1999  | 2000  | 1999  | 1998     | APR 1999 |
| MAXIMUM 5-SECOND:     |                             |      |       |       |       |       |       |       |       |       |       |       |       |          |          |
| SPEED (MPH)           | 3                           | 33   | 43    | 48    | 53    | 33    | 32    | 26    | 26    | 31    | 30    | 46    | 39    | 53       |          |
| DIR. (TENS OF DEGS)   |                             | 27   | 26    | 27    | 26    | 25    | 26    | 25    | 24    | 22    | 26    | 33    | 33    | 26       |          |
| YEAR OF OCCURRENCE    |                             | 2000 | 1998  | 1998  | 1999  | 2000  | 1998  | 2000  | 2000  | 1999  | 2000  | 1999  | 1998  | APR 1999 |          |
| PRECIPITATION         | NORMAL (IN)                 | 30   | 2.40  | 2.51  | 1.98  | 0.72  | 0.14  | 0.03  | 0.01  | 0.15  | 0.31  | 0.34  | 1.76  | 1.66     | 12.01    |
|                       | MAXIMUM MONTHLY (IN)        | 65   | 12.71 | 13.79 | 6.37  | 4.52  | 2.55  | 0.74  | 0.32  | 2.47  | 4.39  | 2.34  | 7.92  | 6.57     | 13.79    |
|                       | YEAR OF OCCURRENCE          |      | 1995  | 1998  | 1983  | 1965  | 1977  | 1993  | 1992  | 1977  | 1939  | 1936  | 1946  | 1936     | FEB 1998 |
|                       | MINIMUM MONTHLY (IN)        | 65   | 0.00  | T     | 0.00  | 0.00  | 0.00  | 0.00  | 0.00  | 0.00  | 0.00  | 0.00  | 0.00  | 0.00     | 0.00     |
|                       | YEAR OF OCCURRENCE          |      | 1976  | 1964  | 1959  | 1979  | 1943  | 1978  | 1983  | 1981  | 1968  | 1969  | 1980  | 1990     | DEC 1990 |
|                       | MAXIMUM IN 24 HOURS (IN)    | 65   | 6.19  | 4.16  | 3.54  | 1.88  | 1.72  | 0.74  | 0.28  | 2.40  | 4.20  | 1.77  | 5.60  | 3.01     | 6.19     |
|                       | YEAR OF OCCURRENCE          |      | 1956  | 1962  | 1968  | 1960  | 1977  | 1993  | 1992  | 1977  | 1939  | 1972  | 1967  | 1951     | JAN 1956 |
|                       | NORMAL NO. DAYS WITH:       |      |       |       |       |       |       |       |       |       |       |       |       |          |          |
| PRECIPITATION ≥ 0.01  | 30                          | 5.2  | 5.4   | 5.7   | 3.1   | 1.1   | 0.5   | 0.3   | 0.6   | 1.6   | 1.9   | 4.0   | 4.8   | 34.2     |          |
| PRECIPITATION ≥ 1.00  | 30                          | 0.9  | 0.7   | 0.4   | *     | *     | 0.0   | 0.0   | 0.1   | 0.1   | 0.1   | 0.5   | 0.4   | 3.2      |          |
| SNOWFALL              | NORMAL (IN)                 | 30   | 0.0   | 0.0   | 0.0   | 0.0   | 0.0   | 0.0   | 0.0   | 0.0   | 0.0   | 0.0   | 0.0   | 0.0      | 0.0      |
|                       | MAXIMUM MONTHLY (IN)        | 62   | T     | T     | T     | 0.0   | 0.0   | 0.0   | 0.0   | 0.0   | 0.0   | 0.0   | 0.0   | T        | T        |
|                       | YEAR OF OCCURRENCE          |      | 1982  | 1951  | 1991  |       |       |       |       |       |       |       |       | 1971     | MAR 1991 |
|                       | MAXIMUM IN 24 HOURS (IN)    | 62   | T     | T     | T     | 0.0   | 0.0   | 0.0   | 0.0   | 0.0   | 0.0   | 0.0   | 0.0   | T        | T        |
|                       | YEAR OF OCCURRENCE          |      | 1982  | 1951  | 1991  |       |       |       |       |       |       |       |       | 1971     | MAR 1991 |
|                       | MAXIMUM SNOW DEPTH (IN)     | 51   | 0     | 0     | 0     | 0     | 0     | 0     | 0     | 0     | 0     | 0     | 0     | 0        | 0        |
| YEAR OF OCCURRENCE    |                             |      |       |       |       |       |       |       |       |       |       |       |       |          |          |
| NORMAL NO. DAYS WITH: |                             |      |       |       |       |       |       |       |       |       |       |       |       |          |          |
| SNOWFALL ≥ 1.0        | 30                          | 0.0  | 0.0   | 0.0   | 0.0   | 0.0   | 0.0   | 0.0   | 0.0   | 0.0   | 0.0   | 0.0   | 0.0   | 0.0      |          |

PRECIPITATION (inches) 2000 LOS ANGELES, CALIFORNIA CA (LAX)

| YEAR           | JAN   | FEB   | MAR  | APR  | MAY  | JUN  | JUL  | AUG  | SEP  | OCT  | NOV  | DEC  | ANNUAL |
|----------------|-------|-------|------|------|------|------|------|------|------|------|------|------|--------|
| 1971           | 0.66  | 0.36  | 0.23 | 0.68 | 0.17 | 0.00 | T    | 0.00 | T    | 0.28 | 0.22 | 5.70 | 8.30   |
| 1972           | 0.00  | 0.16  | T    | T    | 0.01 | 0.06 | T    | 0.06 | 0.03 | 1.79 | 3.13 | 1.88 | 7.12   |
| 1973           | 3.16  | 4.87  | 2.42 | T    | 0.01 | T    | 0.00 | 0.02 | T    | 0.08 | 1.92 | 0.45 | 12.93  |
| 1974           | 5.68  | 0.13  | 2.49 | 0.14 | 0.02 | T    | T    | T    | T    | 0.54 | T    | 3.76 | 12.76  |
| 1975           | 0.01  | 3.21  | 2.98 | 0.74 | 0.04 | T    | T    | T    | T    | 0.24 | T    | 0.10 | 7.32   |
| 1976           | 0.00  | 2.15  | 0.83 | 0.77 | T    | 0.28 | 0.02 | 0.03 | 1.85 | 1.50 | 0.87 | 0.95 | 9.25   |
| 1977           | 3.21  | 0.26  | 1.23 | T    | 2.55 | T    | 0.00 | 2.47 | T    | T    | 0.04 | 3.92 | 13.68  |
| 1978           | 7.48  | 7.66  | 5.75 | 1.23 | T    | 0.00 | 0.00 | T    | 0.39 | 0.04 | 1.20 | 0.83 | 24.58  |
| 1979           | 5.26  | 2.53  | 4.74 | 0.00 | T    | 0.00 | 0.00 | T    | 0.04 | 0.31 | 0.22 | 0.42 | 13.52  |
| 1980           | 6.97  | 9.13  | 3.69 | 0.17 | 0.07 | T    | 0.00 | 0.00 | T    | T    | 0.00 | 1.57 | 21.60  |
| 1981           | 1.51  | 1.58  | 3.24 | 0.46 | T    | T    | 0.00 | 0.00 | 0.05 | 0.40 | 2.63 | 1.52 | 11.39  |
| 1982           | 2.78  | 0.66  | 3.41 | 1.61 | 0.11 | 0.01 | 0.00 | T    | 0.78 | 0.18 | 3.48 | 0.66 | 13.68  |
| 1983           | 5.25  | 5.64  | 6.37 | 3.18 | 0.04 | 0.03 | 0.00 | 1.25 | 1.91 | 0.94 | 2.74 | 2.11 | 29.46  |
| 1984           | 0.39  | 0.01  | 0.14 | 1.16 | T    | T    | 0.00 | 0.29 | 0.09 | 0.28 | 1.24 | 4.21 | 7.81   |
| 1985           | 0.70  | 1.91  | 0.72 | T    | 0.16 | 0.00 | T    | 0.00 | 0.28 | 0.36 | 4.75 | 0.44 | 9.32   |
| 1986           | 2.31  | 5.36  | 4.89 | 0.30 | 0.00 | T    | 0.09 | T    | 1.44 | 0.10 | 1.14 | 0.30 | 15.93  |
| 1987           | 1.27  | 0.64  | 0.92 | 0.02 | T    | 0.09 | 0.08 | T    | 0.08 | 1.74 | 0.60 | 1.79 | 7.23   |
| 1988           | 1.61  | 1.79  | 0.08 | 1.14 | T    | T    | 0.00 | 0.02 | 0.07 | T    | 0.73 | 2.52 | 7.96   |
| 1989           | 0.59  | 1.72  | 0.86 | T    | 0.04 | T    | T    | T    | 0.26 | 0.34 | 0.38 | 0.00 | 4.19   |
| 1990           | 1.18  | 2.60  | 0.14 | 0.34 | 0.83 | T    | 0.00 | 0.02 | T    | 0.00 | 0.10 | 0.03 | 5.24   |
| 1991           | 1.38  | 2.53  | 3.96 | T    | T    | T    | 0.17 | T    | 0.09 | 0.06 | T    | 2.86 | 11.05  |
| 1992           | 1.61  | 4.70  | 5.08 | 0.18 | 0.04 | T    | 0.32 | 0.00 | 0.00 | 0.50 | 0.00 | 4.16 | 16.59  |
| 1993           | 10.63 | 5.48  | 1.83 | 0.00 | T    | 0.74 | T    | 0.00 | T    | 0.09 | 0.93 | 0.97 | 20.67  |
| 1994           | 0.33  | 4.36  | 1.01 | 0.44 | 0.08 | 0.00 | T    | T    | 0.00 | 0.14 | 0.66 | 1.05 | 8.07   |
| 1995           | 12.71 | 0.62  | 5.67 | 0.74 | 0.61 | 0.60 | 0.06 | 0.00 | T    | 0.01 | 0.10 | 2.16 | 23.28  |
| 1996           | 1.94  | 4.19  | 1.36 | 0.42 | 0.05 | 0.00 | T    | 0.00 | 0.00 | 1.46 | 1.93 | 4.74 | 16.09  |
| 1997           | 5.12  | 0.05  | T    | T    | T    | 0.00 | T    | T    | 0.27 | T    | 2.66 | 3.93 | 12.03  |
| 1998           | 3.71  | 13.79 | 3.37 | 1.00 | 2.46 | 0.09 | 0.00 | T    | 0.01 | T    | 1.89 | 0.74 | 27.06  |
| 1999           | 1.19  | 0.50  | 2.12 | 2.23 | T    | 0.59 | T    | 0.00 | 0.00 | 0.00 | 0.28 | T    | 6.91   |
| 2000           | 0.85  | 4.71  | 2.39 | 1.88 | T    | 0.00 | 0.00 | 0.03 | 0.03 | 1.12 | 0.00 | T    | 11.01  |
| POR=<br>65 YRS | 2.77  | 2.60  | 2.01 | 0.81 | 0.17 | 0.06 | 0.02 | 0.09 | 0.18 | 0.31 | 1.48 | 1.72 | 12.22  |

WBAN : 23174

AVERAGE TEMPERATURE (°F) 2000 LOS ANGELES, CALIFORNIA CA (LAX)

| YEAR           | JAN  | FEB  | MAR  | APR  | MAY  | JUN  | JUL  | AUG  | SEP  | OCT  | NOV  | DEC  | ANNUAL |
|----------------|------|------|------|------|------|------|------|------|------|------|------|------|--------|
| 1971           | 55.5 | 56.7 | 56.8 | 58.8 | 61.4 | 64.7 | 69.5 | 74.3 | 70.9 | 65.0 | 59.2 | 52.7 | 62.1   |
| 1972           | 53.9 | 56.9 | 59.8 | 61.5 | 64.1 | 67.1 | 70.3 | 72.8 | 69.8 | 66.4 | 60.2 | 56.8 | 63.3   |
| 1973           | 54.6 | 58.5 | 55.5 | 60.1 | 62.4 | 66.7 | 68.0 | 69.1 | 67.6 | 65.7 | 59.5 | 58.3 | 62.2   |
| 1974           | 54.3 | 57.5 | 56.6 | 59.7 | 62.9 | 66.7 | 70.5 | 69.6 | 69.0 | 65.9 | 62.7 | 55.8 | 62.6   |
| 1975           | 56.9 | 55.6 | 55.7 | 56.7 | 61.1 | 64.5 | 68.9 | 68.3 | 70.2 | 65.5 | 60.6 | 57.7 | 61.8   |
| 1976           | 60.0 | 57.9 | 58.4 | 58.0 | 63.3 | 68.0 | 70.1 | 69.3 | 70.4 | 69.2 | 65.9 | 60.1 | 64.2   |
| 1977           | 57.6 | 60.6 | 56.0 | 61.1 | 61.2 | 65.1 | 68.6 | 70.9 | 68.7 | 66.2 | 64.7 | 60.9 | 63.5   |
| 1978           | 58.6 | 58.3 | 62.1 | 59.2 | 65.5 | 67.6 | 67.7 | 69.8 | 73.6 | 68.3 | 59.0 | 54.3 | 63.7   |
| 1979           | 54.6 | 54.2 | 57.5 | 60.2 | 63.6 | 69.2 | 68.4 | 71.0 | 73.8 | 66.1 | 61.1 | 60.6 | 63.4   |
| 1980           | 59.7 | 61.3 | 58.3 | 60.6 | 60.1 | 65.7 | 68.7 | 70.9 | 67.0 | 66.2 | 62.4 | 60.2 | 63.4   |
| 1981           | 59.5 | 60.6 | 58.1 | 61.2 | 64.8 | 71.9 | 71.7 | 71.3 | 69.6 | 65.3 | 62.1 | 59.4 | 64.6   |
| 1982           | 54.6 | 59.1 | 57.6 | 60.2 | 62.5 | 63.6 | 69.3 | 71.4 | 71.6 | 69.2 | 61.2 | 56.3 | 63.1   |
| 1983           | 58.9 | 57.4 | 57.8 | 59.2 | 62.5 | 65.4 | 69.6 | 73.6 | 72.4 | 69.5 | 61.0 | 57.1 | 63.7   |
| 1984           | 58.2 | 58.5 | 61.3 | 61.4 | 66.1 | 67.1 | 71.3 | 73.1 | 76.5 | 65.6 | 58.7 | 55.2 | 64.4   |
| 1985           | 55.5 | 56.6 | 55.2 | 60.7 | 61.2 | 66.0 | 71.4 | 69.9 | 68.7 | 67.1 | 58.6 | 59.1 | 62.5   |
| 1986           | 62.3 | 58.7 | 59.2 | 61.7 | 63.4 | 66.3 | 68.5 | 68.9 | 65.8 | 66.4 | 65.0 | 58.4 | 63.7   |
| 1987           | 55.0 | 58.3 | 58.9 | 63.1 | 64.2 | 64.7 | 66.3 | 67.7 | 69.6 | 69.0 | 61.9 | 53.9 | 62.7   |
| 1988           | 56.7 | 60.6 | 62.5 | 61.3 | 63.0 | 63.6 | 69.2 | 68.3 | 67.7 | 66.1 | 60.1 | 56.5 | 63.0   |
| 1989           | 55.4 | 54.8 | 58.9 | 64.7 | 62.5 | 65.2 | 69.4 | 67.7 | 68.3 | 65.9 | 65.1 | 60.5 | 63.2   |
| 1990           | 57.1 | 55.0 | 57.5 | 62.5 | 62.7 | 67.5 | 71.4 | 69.7 | 71.0 | 69.6 | 64.2 | 56.8 | 63.8   |
| 1991           | 57.2 | 59.9 | 55.0 | 61.0 | 60.3 | 63.9 | 67.0 | 69.0 | 67.8 | 67.3 | 63.4 | 58.7 | 62.5   |
| 1992           | 58.4 | 60.8 | 59.2 | 65.6 | 66.1 | 65.9 | 71.5 | 72.9 | 70.7 | 67.0 | 63.7 | 55.8 | 64.8   |
| 1993           | 56.2 | 57.0 | 60.5 | 62.8 | 65.1 | 68.3 | 69.5 | 69.5 | 69.0 | 68.4 | 63.6 | 58.4 | 64.0   |
| 1994           | 59.2 | 57.0 | 60.7 | 60.2 | 62.0 | 68.3 | 67.9 | 74.7 | 70.7 | 66.9 | 57.9 | 57.5 | 63.6   |
| 1995           | 56.8 | 61.7 | 60.1 | 60.5 | 60.3 | 64.4 | 68.2 | 68.9 | 70.7 | 67.3 | 62.9 | 58.9 | 63.4   |
| 1996           | 58.2 | 58.3 | 60.1 | 64.2 | 65.9 | 67.3 | 69.5 | 73.3 | 69.1 | 63.9 | 62.1 | 58.2 | 64.2   |
| 1997           | 57.3 | 58.7 | 59.9 | 61.8 | 67.6 | 68.8 | 69.4 | 72.9 | 74.7 | 68.6 | 63.2 | 56.9 | 65.0   |
| 1998           | 56.2 | 55.1 | 58.0 | 57.3 | 61.0 | 64.7 | 69.6 | 72.1 | 70.4 | 65.7 | 59.7 | 55.6 | 62.1   |
| 1999           | 57.2 | 56.5 | 55.7 | 58.4 | 63.4 | 65.0 | 70.4 | 68.8 | 67.8 | 68.1 | 60.6 | 59.2 | 62.6   |
| 2000           | 58.4 | 57.8 | 57.9 | 61.0 | 64.3 | 68.0 | 68.7 | 70.8 | 69.7 | 63.7 | 58.1 | 58.4 | 63.1   |
| POR=<br>64 YRS | 55.6 | 56.7 | 57.5 | 60.0 | 62.5 | 65.5 | 68.6 | 69.9 | 69.1 | 65.9 | 61.0 | 56.9 | 62.4   |

HEATING DEGREE DAYS (base 65°F) 2000 LOS ANGELES, CALIFORNIA CA (LAX)

| YEAR    | JUL | AUG | SEP | OCT | NOV | DEC | JAN | FEB | MAR | APR | MAY | JUN | TOTAL |
|---------|-----|-----|-----|-----|-----|-----|-----|-----|-----|-----|-----|-----|-------|
| 1971-72 | 0   | 0   | 3   | 92  | 180 | 371 | 339 | 229 | 161 | 103 | 53  | 0   | 1531  |
| 1972-73 | 0   | 0   | 0   | 15  | 138 | 248 | 314 | 177 | 287 | 146 | 89  | 12  | 1426  |
| 1973-74 | 0   | 0   | 1   | 24  | 159 | 207 | 323 | 208 | 256 | 158 | 62  | 2   | 1400  |
| 1974-75 | 0   | 0   | 0   | 26  | 100 | 279 | 258 | 258 | 278 | 243 | 117 | 23  | 1582  |
| 1975-76 | 0   | 0   | 0   | 31  | 145 | 226 | 176 | 202 | 206 | 205 | 49  | 15  | 1255  |
| 1976-77 | 0   | 0   | 0   | 5   | 62  | 145 | 227 | 129 | 272 | 111 | 115 | 13  | 1079  |
| 1977-78 | 1   | 0   | 0   | 19  | 62  | 120 | 195 | 184 | 116 | 168 | 46  | 3   | 914   |
| 1978-79 | 1   | 0   | 0   | 5   | 179 | 326 | 316 | 295 | 237 | 137 | 74  | 1   | 1571  |
| 1979-80 | 0   | 0   | 0   | 18  | 121 | 150 | 161 | 113 | 203 | 143 | 141 | 34  | 1084  |
| 1980-81 | 1   | 0   | 3   | 27  | 77  | 158 | 164 | 147 | 207 | 134 | 29  | 0   | 947   |
| 1981-82 | 0   | 0   | 0   | 36  | 112 | 172 | 314 | 165 | 225 | 147 | 75  | 45  | 1291  |
| 1982-83 | 0   | 0   | 0   | 3   | 119 | 261 | 203 | 205 | 218 | 167 | 80  | 23  | 1279  |
| 1983-84 | 0   | 0   | 0   | 0   | 129 | 237 | 206 | 182 | 116 | 117 | 22  | 0   | 1009  |
| 1984-85 | 0   | 0   | 0   | 29  | 183 | 299 | 287 | 243 | 296 | 148 | 115 | 14  | 1614  |
| 1985-86 | 0   | 0   | 1   | 17  | 192 | 181 | 107 | 184 | 182 | 114 | 52  | 7   | 1037  |
| 1986-87 | 0   | 0   | 21  | 15  | 34  | 199 | 306 | 189 | 190 | 84  | 44  | 19  | 1101  |
| 1987-88 | 1   | 1   | 0   | 6   | 111 | 337 | 257 | 137 | 127 | 118 | 72  | 61  | 1228  |
| 1988-89 | 0   | 0   | 5   | 16  | 145 | 265 | 294 | 291 | 189 | 80  | 72  | 25  | 1382  |
| 1989-90 | 0   | 2   | 2   | 15  | 44  | 152 | 237 | 275 | 223 | 74  | 82  | 5   | 1111  |
| 1990-91 | 0   | 0   | 0   | 1   | 62  | 261 | 236 | 145 | 303 | 130 | 145 | 41  | 1324  |
| 1991-92 | 0   | 0   | 0   | 29  | 79  | 190 | 202 | 130 | 172 | 25  | 0   | 3   | 830   |
| 1992-93 | 0   | 0   | 0   | 2   | 67  | 277 | 269 | 216 | 147 | 69  | 23  | 10  | 1080  |
| 1993-94 | 0   | 0   | 0   | 3   | 59  | 199 | 181 | 217 | 142 | 144 | 88  | 1   | 1034  |
| 1994-95 | 0   | 0   | 0   | 15  | 207 | 226 | 249 | 125 | 147 | 135 | 138 | 37  | 1279  |
| 1995-96 | 0   | 0   | 0   | 8   | 66  | 182 | 216 | 194 | 149 | 65  | 19  | 4   | 903   |
| 1996-97 | 4   | 0   | 0   | 43  | 119 | 204 | 234 | 174 | 169 | 114 | 1   | 0   | 1062  |
| 1997-98 | 0   | 0   | 0   | 9   | 103 | 246 | 265 | 269 | 212 | 225 | 116 | 20  | 1465  |
| 1998-99 | 0   | 0   | 0   | 18  | 151 | 290 | 235 | 231 | 280 | 210 | 48  | 30  | 1493  |
| 1999-00 | 0   | 0   | 2   | 20  | 131 | 172 | 200 | 207 | 214 | 121 | 39  | 1   | 1107  |
| 2000-   | 0   | 0   | 0   | 59  | 200 | 198 |     |     |     |     |     |     |       |

WBAN : 23174

COOLING DEGREE DAYS (base 65°F) 2000 LOS ANGELES, CALIFORNIA CA (LAX)

| YEAR | JAN | FEB | MAR | APR | MAY | JUN | JUL | AUG | SEP | OCT | NOV | DEC | ANNUAL |
|------|-----|-----|-----|-----|-----|-----|-----|-----|-----|-----|-----|-----|--------|
| 1971 | 23  | 8   | 0   | 13  | 23  | 33  | 148 | 292 | 184 | 101 | 14  | 0   | 839    |
| 1972 | 0   | 0   | 8   | 3   | 34  | 68  | 173 | 251 | 151 | 65  | 1   | 4   | 758    |
| 1973 | 1   | 0   | 0   | 4   | 14  | 70  | 99  | 134 | 83  | 52  | 2   | 8   | 467    |
| 1974 | 0   | 3   | 0   | 2   | 5   | 58  | 179 | 150 | 125 | 65  | 40  | 0   | 627    |
| 1975 | 13  | 0   | 0   | 0   | 0   | 14  | 128 | 108 | 163 | 51  | 21  | 7   | 505    |
| 1976 | 29  | 2   | 7   | 1   | 1   | 111 | 163 | 141 | 167 | 143 | 96  | 3   | 864    |
| 1977 | 3   | 13  | 0   | 1   | 0   | 23  | 121 | 193 | 118 | 63  | 62  | 5   | 602    |
| 1978 | 0   | 3   | 32  | 0   | 70  | 86  | 92  | 159 | 266 | 115 | 4   | 0   | 827    |
| 1979 | 0   | 0   | 9   | 0   | 35  | 133 | 112 | 193 | 271 | 60  | 9   | 23  | 845    |
| 1980 | 3   | 9   | 0   | 15  | 0   | 62  | 124 | 190 | 70  | 71  | 9   | 15  | 568    |
| 1981 | 0   | 30  | 0   | 25  | 29  | 212 | 214 | 204 | 145 | 53  | 31  | 4   | 947    |
| 1982 | 0   | 3   | 1   | 10  | 6   | 7   | 144 | 204 | 205 | 140 | 15  | 0   | 735    |
| 1983 | 22  | 0   | 0   | 1   | 11  | 40  | 151 | 274 | 231 | 146 | 17  | 0   | 893    |
| 1984 | 4   | 0   | 8   | 14  | 61  | 69  | 202 | 257 | 352 | 54  | 0   | 1   | 1022   |
| 1985 | 0   | 14  | 0   | 25  | 2   | 51  | 203 | 160 | 118 | 91  | 6   | 6   | 676    |
| 1986 | 29  | 11  | 9   | 24  | 9   | 52  | 115 | 124 | 52  | 64  | 40  | 2   | 531    |
| 1987 | 3   | 11  | 9   | 34  | 27  | 17  | 47  | 94  | 148 | 136 | 22  | 0   | 548    |
| 1988 | 9   | 16  | 56  | 14  | 17  | 26  | 134 | 109 | 91  | 56  | 1   | 8   | 537    |
| 1989 | 5   | 12  | 6   | 80  | 2   | 34  | 145 | 93  | 105 | 48  | 55  | 18  | 603    |
| 1990 | 1   | 1   | 1   | 5   | 16  | 86  | 204 | 151 | 187 | 147 | 43  | 13  | 855    |
| 1991 | 1   | 4   | 0   | 17  | 9   | 13  | 70  | 129 | 92  | 107 | 37  | 2   | 481    |
| 1992 | 5   | 14  | 0   | 50  | 43  | 36  | 207 | 250 | 177 | 73  | 31  | 0   | 886    |
| 1993 | 4   | 0   | 13  | 12  | 32  | 116 | 148 | 147 | 128 | 114 | 23  | 5   | 742    |
| 1994 | 7   | 0   | 18  | 6   | 4   | 105 | 94  | 310 | 176 | 81  | 2   | 2   | 805    |
| 1995 | 3   | 37  | 0   | 7   | 0   | 24  | 108 | 130 | 176 | 87  | 6   | 0   | 578    |
| 1996 | 12  | 9   | 5   | 47  | 53  | 81  | 150 | 265 | 131 | 15  | 39  | 0   | 807    |
| 1997 | 0   | 5   | 16  | 25  | 86  | 121 | 143 | 252 | 298 | 130 | 56  | 2   | 1134   |
| 1998 | 0   | 0   | 1   | 0   | 0   | 18  | 150 | 227 | 171 | 42  | 0   | 3   | 612    |
| 1999 | 0   | 1   | 0   | 17  | 5   | 35  | 176 | 124 | 94  | 121 | 4   | 0   | 577    |
| 2000 | 4   | 3   | 2   | 7   | 23  | 98  | 118 | 182 | 146 | 25  | 2   | 2   | 612    |

SNOWFALL (inches) 2000 LOS ANGELES, CALIFORNIA CA (LAX)

| YEAR           | JUL | AUG | SEP | OCT | NOV | DEC | JAN | FEB | MAR | APR | MAY | JUN | TOTAL |
|----------------|-----|-----|-----|-----|-----|-----|-----|-----|-----|-----|-----|-----|-------|
| 1971-72        | 0.0 | 0.0 | 0.0 | 0.0 | 0.0 | T   | 0.0 | 0.0 | 0.0 | 0.0 | 0.0 | 0.0 | T     |
| 1972-73        | 0.0 | 0.0 | 0.0 | 0.0 | 0.0 | 0.0 | 0.0 | 0.0 | 0.0 | 0.0 | 0.0 | 0.0 | 0.0   |
| 1973-74        | 0.0 | 0.0 | 0.0 | 0.0 | 0.0 | 0.0 | T   | 0.0 | 0.0 | 0.0 | 0.0 | 0.0 | T     |
| 1974-75        | 0.0 | 0.0 | 0.0 | 0.0 | 0.0 | 0.0 | 0.0 | 0.0 | 0.0 | 0.0 | 0.0 | 0.0 | 0.0   |
| 1975-76        | 0.0 | 0.0 | 0.0 | 0.0 | 0.0 | 0.0 | 0.0 | 0.0 | 0.0 | 0.0 | 0.0 | 0.0 | 0.0   |
| 1976-77        | 0.0 | 0.0 | 0.0 | 0.0 | 0.0 | 0.0 | 0.0 | 0.0 | 0.0 | 0.0 | 0.0 | 0.0 | 0.0   |
| 1977-78        | 0.0 | 0.0 | 0.0 | 0.0 | 0.0 | 0.0 | 0.0 | 0.0 | 0.0 | 0.0 | 0.0 | 0.0 | 0.0   |
| 1978-79        | 0.0 | 0.0 | 0.0 | 0.0 | 0.0 | 0.0 | 0.0 | 0.0 | 0.0 | 0.0 | 0.0 | 0.0 | 0.0   |
| 1979-80        | 0.0 | 0.0 | 0.0 | 0.0 | 0.0 | 0.0 | 0.0 | 0.0 | 0.0 | 0.0 | 0.0 | 0.0 | 0.0   |
| 1980-81        | 0.0 | 0.0 | 0.0 | 0.0 | 0.0 | 0.0 | 0.0 | 0.0 | 0.0 | 0.0 | 0.0 | 0.0 | 0.0   |
| 1981-82        | 0.0 | 0.0 | 0.0 | 0.0 | 0.0 | 0.0 | T   | 0.0 | 0.0 | 0.0 | 0.0 | 0.0 | T     |
| 1982-83        | 0.0 | 0.0 | 0.0 | 0.0 | 0.0 | 0.0 | 0.0 | 0.0 | 0.0 | 0.0 | 0.0 | 0.0 | 0.0   |
| 1983-84        | 0.0 | 0.0 | 0.0 | 0.0 | 0.0 | 0.0 | 0.0 | 0.0 | 0.0 | 0.0 | 0.0 | 0.0 | 0.0   |
| 1984-85        | 0.0 | 0.0 | 0.0 | 0.0 | 0.0 | 0.0 | 0.0 | 0.0 | 0.0 | 0.0 | 0.0 | 0.0 | 0.0   |
| 1985-86        | 0.0 | 0.0 | 0.0 | 0.0 | 0.0 | 0.0 | 0.0 | 0.0 | 0.0 | 0.0 | 0.0 | 0.0 | 0.0   |
| 1986-87        | 0.0 | 0.0 | 0.0 | 0.0 | 0.0 | 0.0 | 0.0 | 0.0 | 0.0 | 0.0 | 0.0 | 0.0 | 0.0   |
| 1987-88        | 0.0 | 0.0 | 0.0 | 0.0 | 0.0 | 0.0 | 0.0 | 0.0 | 0.0 | 0.0 | 0.0 | 0.0 | 0.0   |
| 1988-89        | 0.0 | 0.0 | 0.0 | 0.0 | 0.0 | 0.0 | 0.0 | 0.0 | 0.0 | 0.0 | 0.0 | 0.0 | 0.0   |
| 1989-90        | 0.0 | 0.0 | 0.0 | 0.0 | 0.0 | 0.0 | 0.0 | 0.0 | T   | 0.0 | 0.0 | 0.0 | T     |
| 1990-91        | 0.0 | 0.0 | 0.0 | 0.0 | 0.0 | 0.0 | 0.0 | 0.0 | T   | 0.0 | 0.0 | 0.0 | T     |
| 1991-92        | 0.0 | 0.0 | 0.0 | 0.0 | 0.0 | 0.0 | 0.0 | 0.0 | 0.0 | 0.0 | 0.0 | 0.0 | 0.0   |
| 1992-93        | 0.0 | 0.0 | 0.0 | 0.0 | 0.0 | 0.0 | 0.0 | 0.0 | 0.0 | 0.0 | 0.0 | 0.0 | 0.0   |
| 1993-94        | 0.0 | 0.0 | 0.0 | 0.0 | 0.0 | 0.0 | 0.0 | 0.0 | 0.0 | 0.0 | 0.0 | 0.0 | 0.0   |
| 1994-95        | 0.0 | 0.0 | 0.0 | 0.0 | 0.0 | 0.0 | 0.0 | 0.0 | 0.0 | 0.0 | 0.0 | 0.0 | 0.0   |
| 1995-96        | 0.0 | 0.0 | 0.0 | 0.0 | 0.0 | 0.0 | 0.0 | 0.0 | 0.0 | 0.0 | 0.0 | 0.0 | 0.0   |
| 1996-97        | 0.0 | 0.0 | 0.0 | 0.0 | 0.0 | 0.0 | 0.0 | 0.0 |     |     |     |     |       |
| 1997-98        |     |     |     |     |     |     |     |     |     |     |     |     |       |
| 1998-99        |     |     |     |     |     |     |     |     |     |     |     |     |       |
| 1999-00        |     |     |     |     |     |     |     |     |     |     |     |     |       |
| 2000-          |     |     |     |     |     |     |     |     |     |     |     |     |       |
| POR=<br>60 YRS | 0.0 | 0.0 | 0.0 | 0.0 | 0.0 | T   | T   | T   | T   | 0.0 | 0.0 | 0.0 | T     |

WBAN : 23174

REFERENCE NOTES:

|   |  |
|---|--|
| <p>PAGE 1:<br/>THE TEMPERATURE GRAPH SHOWS NORMAL MAXIMUM AND NORMAL MINIMUM DAILY TEMPERATURES (SOLID CURVES) AND THE ACTUAL DAILY HIGH AND LOW TEMPERATURES (VERTICAL BARS).</p> <p>PAGE 2 AND 3:<br/>H/C INDICATES HEATING AND COOLING DEGREE DAYS.<br/>RH INDICATES RELATIVE HUMIDITY<br/>W/O INDICATES WEATHER AND OBSTRUCTIONS<br/>S INDICATES SUNSHINE.<br/>PR INDICATES PRESSURE.<br/>CLOUDINESS ON PAGE 3 IS THE SUM OF THE CEILOMETER AND SATELLITE DATA NOT TO EXCEED EIGHT EIGHTHS(OKTAS).</p> <p>GENERAL:<br/>T INDICATES TRACE PRECIPITATION, AN AMOUNT GREATER THAN ZERO BUT LESS THAN THE LOWEST REPORTABLE VALUE.<br/>+ INDICATES THE VALUE ALSO OCCURS ON EARLIER DATES.<br/>BLANK ENTRIES DENOTE MISSING OR UNREPORTED DATA.<br/>NORMALS ARE 30-YEAR AVERAGES (1961 - 1990).<br/>ASOS INDICATES AUTOMATED SURFACE OBSERVING SYSTEM.<br/>PM INDICATES THE LAST DAY OF THE PREVIOUS MONTH.<br/>POR (PERIOD OF RECORD) BEGINS WITH THE JANUARY DATA MONTH AND IS THE NUMBER OF YEARS USED TO COMPUTE THE MEAN. INDIVIDUAL MONTHS WITHIN THE POR MAY BE MISSING.<br/>WHEN THE POR FOR A NORMAL IS LESS THAN 30 YEARS, THE NORMAL IS PROVISIONAL AND IS BASED ON THE NUMBER OF YEARS INDICATED.<br/>0.* OR * INDICATES THE VALUE OR MEAN-DAYS-WITH IS BETWEEN 0.00 AND 0.05.<br/>CLOUDINESS FOR ASOS STATIONS DIFFERS FROM THE NON-ASOS OBSERVATION TAKEN BY A HUMAN OBSERVER. ASOS STATION CLOUDINESS IS BASED ON TIME-AVERAGED CEILOMETER DATA FOR CLOUDS AT OR BELOW 12,000 FEET AND ON SATELLITE DATA FOR CLOUDS ABOVE 12,000 FEET.<br/>THE NUMBER OF DAYS WITH CLEAR, PARTLY CLOUDY, AND CLOUDY CONDITIONS FOR ASOS STATIONS IS THE SUM OF THE CEILOMETER AND SATELLITE DATA FOR THE SUNRISE TO SUNSET PERIOD.</p> | <p>GENERAL CONTINUED:<br/>CLEAR INDICATES 0 - 2 OKTAS, PARTLY CLOUDY INDICATES 3 - 6 OKTAS, AND CLOUDY INDICATES 7 OR 8 OKTAS.<br/>WHEN AT LEAST ONE OF THE ELEMENTS (CEILOMETER OR SATELLITE) IS MISSING, THE DAILY CLOUDINESS IS NOT COMPUTED.<br/>WIND DIRECTION IS RECORDED IN TENS OF DEGREES (2 DIGITS) CLOCKWISE FROM TRUE NORTH. "00" INDICATES CALM. "36" INDICATES TRUE NORTH.<br/>RESULTANT WIND IS THE VECTOR AVERAGE OF THE SPEED AND DIRECTION.<br/>AVERAGE TEMPERATURE IS THE SUM OF THE MEAN DAILY MAXIMUM AND MINIMUM TEMPERATURE DIVIDED BY 2.<br/>SNOWFALL DATA COMPRISE ALL FORMS OF FROZEN PRECIPITATION, INCLUDING HAIL.<br/>A HEATING (COOLING) DEGREE DAY IS THE DIFFERENCE BETWEEN THE AVERAGE DAILY TEMPERATURE AND 65° F.<br/>DRY BULB IS THE TEMPERATURE OF THE AMBIENT AIR.<br/>DEW POINT IS THE TEMPERATURE TO WHICH THE AIR MUST BE COOLED TO ACHIEVE 100 PERCENT RELATIVE HUMIDITY.<br/>WET BULB IS THE TEMPERATURE THE AIR WOULD HAVE IF THE MOISTURE CONTENT WAS INCREASED TO 100 PERCENT RELATIVE HUMIDITY.</p> <p>ON JULY 1, 1996, THE NATIONAL WEATHER SERVICE BEGAN USING THE "METAR" OBSERVATION CODE THAT WAS ALREADY EMPLOYED BY MOST OTHER NATIONS OF THE WORLD. THE MOST NOTICEABLE DIFFERENCE IN THIS ANNUAL PUBLICATION WILL BE THE CHANGE IN UNITS FROM TENTHS TO EIGHTS(OKTAS) FOR REPORTING THE AMOUNT OF SKY COVER.</p> |
|---|--|

2000  
LOS ANGELES, CALIFORNIA  
INTERNATIONAL AIRPORT (LAX)

Predominating influences on the climate of the Los Angeles International Airport are the Pacific Ocean, 3 miles to the west, the southern California coastal mountain ranges which line the inland side of the coastal plain surrounding the airport, and the large scale weather patterns which allow Pacific storm paths to extend as far south as the Los Angeles area only during late fall, winter, and early spring. Marine air covers the coastal plain most of the year but air from the interior reaches the coast at times, especially during the fall and winter months. The coast ranges act as a buffer to the more extreme conditions of the interior. Pronounced differences in temperature, humidity, cloudiness, fog, sunshine, and rain occur over fairly short distances on the coastal plains and the adjoining foothills due to the local topography and the decreased marine effect further inland. In general, temperature ranges are least and humidity highest close to the coast, while precipitation increases with elevation on the foothills.

The most characteristic feature of the climate of the coastal plain around the station is the night and morning low cloudiness and sunny afternoons which prevail during the spring and summer months and occur often during the remainder of the year. The coastal low cloudiness, combined with the westerly sea breeze, produces mild temperatures throughout the year. Daily temperature range is usually less than 15 degrees in spring and summer and about 20 degrees in fall and winter. Hot weather is not frequent at any season along the coast, although readings have exceeded the mid 80s at the airport every month of the year. When high temperatures do occur, the humidity is almost always low so that discomfort is unusual. Nighttime temperatures are generally cool but minimum temperatures below 40 degrees are rare and periods of over 10 years have passed with no readings below freezing at the airport. Prevailing daytime winds are from the west, but night and early morning breezes are usually light and from the east and northeast. Strongest winds observed at the station have been from the west and north following winter storms. During the fall, winter, and spring, gusty dry northeasterly Santa Ana winds blow over southern California mountains and through passes to the coast. These winds rarely reach L.A. International Airport but extremely dry air and dust clouds associated with them can be expected several times each year.

Precipitation occurs mainly in the winter. Measurable rain may fall on about one day in four from late October into early April, but in three years out of four, traces or less are reported for the entire months of July and August. Thunderstorms do not occur often near the coast, but showers and thunderstorms are observed over the coastal ranges at times during the summer when moist air from the south and southeast invades southern California. Annual rainfall at Los Angeles International Airport is somewhat less than that recorded on the Palos Verdes Hills, rising to an elevation of nearly 1,500 feet on a peninsula 12 miles to the south, and on the Hollywood Hills and Santa Monica Mountains which extend east-west 12 miles north of the station with peaks reaching to nearly 2,000 feet. Traces of snow have fallen at Los Angeles International Airport only a few times, melting as they fell.

Visibility at Los Angeles International Airport is frequently restricted by haze, fog, or smoke. Low visibilities are favored by a layer of moist marine air with warm dry air above and light winds but at times a moderate afternoon sea breeze will bring a fog bank ashore and over the airport. Light fog occurs at some time nearly every month, but heavy fog is observed least during the summer and can be expected on about one night or early morning in four during the winter.

# STATION LOCATION

LOS ANGELES, CALIFORNIA  
INTERNATIONAL AIRPORT

| LOCATION  | Occupied From | Occupied To | Airline Distances and Directions from previous Location | LATITUDE<br>NORTH | LONGITUDE<br>WEST | ELEVATION ABOVE |            |      |         |              |          |               |                     |                   |  | AUTOMATIC OBSERVING EQUIPMENT *   | * TYPE<br><br>M = AMOS<br>T = AUTOB<br>S = ASOS<br>W = AWOS<br><br>REMARKS |
|---|---------------|-------------|---|-------------------|-------------------|-----------------|------------|------|---------|--------------|----------|---------------|---------------------|-------------------|--|-----------------------------------|--|
|   |               |             |   |                   |                   | GROUND          |            |      |         |              |          |               |                     |                   |  |                                   |  |
|   |               |             |   |                   |                   | SEA LEVEL       | GROUND     | WIND | EXTREME | PSYCHROMETER | SUNSHINE | TIPPING GAUGE | WEIGHING RAIN GAUGE | 8 INCH RAIN GAUGE | HYGROMETER   |                                   |  |
| <b>*NOTE:</b><br><br><b>AIRPORT</b><br><br>International Airport<br>10445 S Sepulveda Blvd.<br><br>Weather Service Bldg.<br>International Airport<br>10445 S Sepulveda Blvd.<br><br>International Airport | 6/21/68       | 4/11/72     | 3/4 mi. W   | 33°56'            | 118°24'           | 97              | a20        | s19  | s19     |              | 16       |               |                     |                   | a5   | a. Same site as prior to 6/21/68. |  |
|   | 4/11/72       | 03/01/97    | 90 ft. N  | 33°56'            | 118°24'           | 97              | b20<br>d30 | s5   | s5      |              | 4        | c6            | c4                  | b5<br>e5<br>f5    | b. Same site as prior to 4/11/72.<br>s. Standby status.<br>c. Added 11/26/74.<br>d. Raised 10/31/79.<br>e. Type change 10/1/79.<br>f. Type change 11/6/85. |                                   |  |
|   | 03/01/97      | Present     | NA  | 33°56'            | 118°24'           | 152             |            |      |         |              |          |               |                     |                   | S  | ASOS Commissioned 03/01/97        |  |

SUBSCRIPTION:  
Price and ordering information available through : National ClimaticDataCenter, Federal building, Asheville, North Carolina 28801.

**INQUIRIES/COMMENTS CALL: Toll Free (866) 742-3322**

OFFICIAL BUSINESS  
PENALTY FOR PRIVATE USE \$300  
CHANGE SERVICE REQUESTED

**FIRST CLASS  
POSTAGE & FEES PAID  
United States Department of Commerce  
NOAA Permit No. G - 19**

NCDC Subscription Services Center  
310 State Route 956 Building 300  
Rocket Center, WV 26726

\* NOTES: For earlier station history see previous editions.