

2000

# LOCAL CLIMATOLOGICAL DATA ANNUAL SUMMARY WITH COMPARATIVE DATA



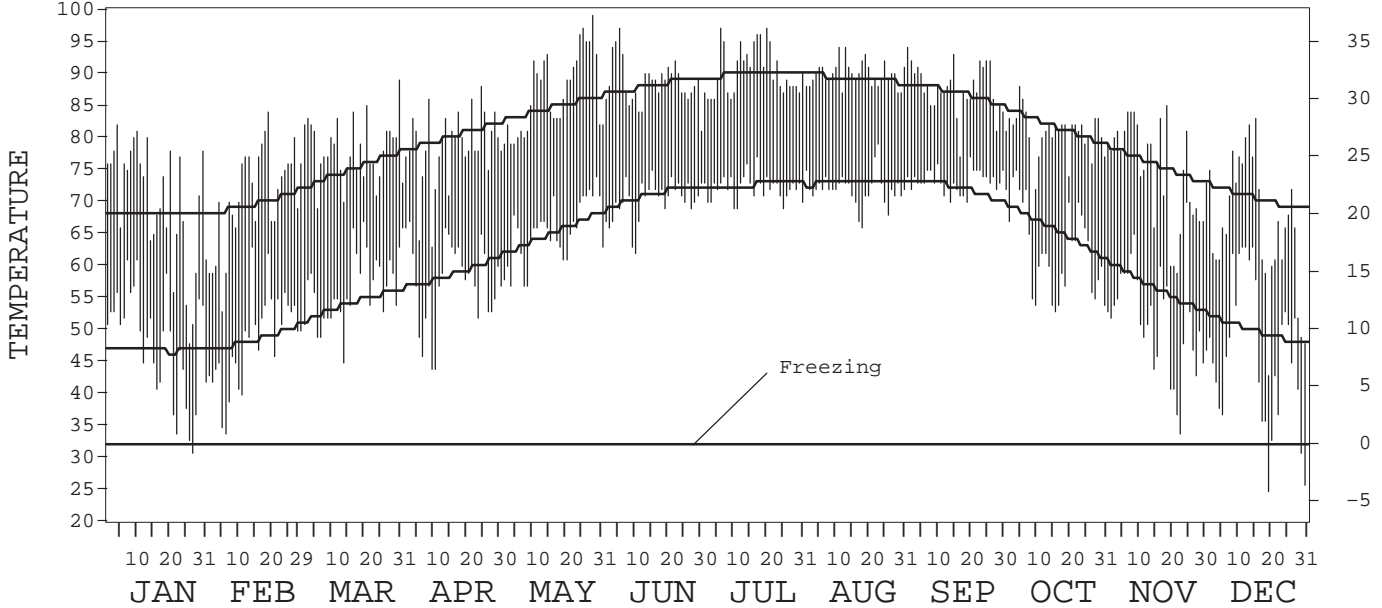
ISSN 0198-1226

## DAYTONA BEACH, FLORIDA (DAB)

### Daily Data

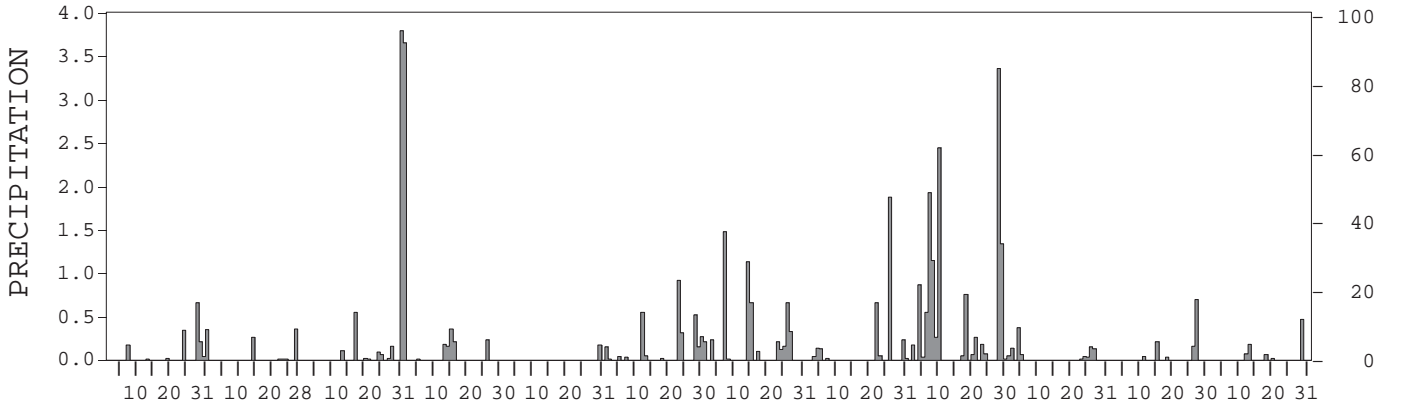
Fahrenheit

Celsius



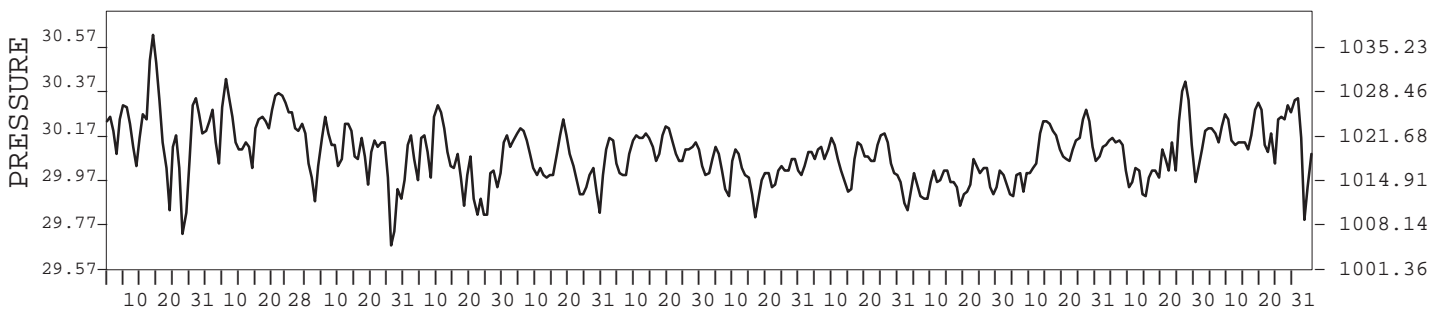
Inches

Millimeters



Inches of Mercury

Hectopascals



I CERTIFY THAT THIS IS AN OFFICIAL PUBLICATION OF THE NATIONAL OCEANIC AND ATMOSPHERIC ADMINISTRATION, AND IS COMPILED FROM RECORDS ON FILE AT THE NATIONAL CLIMATIC DATA CENTER.

NATIONAL OCEANIC AND ATMOSPHERIC ADMINISTRATION

NATIONAL ENVIRONMENTAL AND INFORMATION SERVICE

NATIONAL CLIMATIC DATA CENTER ASHEVILLE, NORTH CAROLINA

DIRECTOR NATIONAL CLIMATIC DATA CENTER

# METEOROLOGICAL DATA FOR 2000

## DAYTONA BEACH, FL (DAB)

LATITUDE: 29° 10' 38" N      LONGITUDE: 81° 03' 36" W      ELEVATION (FT): GRND: 32      BARO: 32      TIME ZONE: EASTERN (UTC + 5)      WBAN: 12834

ELEMENT		JAN	FEB	MAR	APR	MAY	JUN	JUL	AUG	SEP	OCT	NOV	DEC	YEAR	
TEMPERATURE °F	MEAN DAILY MAXIMUM	70.0	70.9	78.1	78.6	87.1	88.6	90.5	89.9	87.7	80.4	74.7	66.6	80.3	
	HIGHEST DAILY MAXIMUM	82	84	89	88	99	97	97	94	94	88	85	83	99	
	DATE OF OCCURRENCE	04	19	30	24	28	05	20+	13+	01	05	19	16	MAY 28	
	MEAN DAILY MINIMUM	47.9	48.5	56.7	57.7	65.4	70.3	72.3	72.0	73.3	62.8	51.7	46.5	60.4	
	LOWEST DAILY MINIMUM	31	34	45	44	57	62	69	66	70	53	34	25	25	
	DATE OF OCCURRENCE	27	06	13	10+	08+	10	25+	18	19+	16	23	20	DEC 20	
	AVERAGE DRY BULB	59.0	59.7	67.4	68.2	76.3	79.5	81.4	81.0	80.5	71.6	63.2	56.6	70.4	
	MEAN WET BULB	53.7	54.9	62.0	61.7	68.6	72.8	74.8	74.7	74.9	66.3	58.4	52.8	64.6	
	MEAN DEW POINT	49.3	50.8	58.4	57.1	64.5	69.9	72.4	72.1	72.7	63.0	54.9	48.9	61.2	
	NUMBER OF DAYS WITH:														
	MAXIMUM ≥ 90°	0	0	0	0	12	11	15	17	10	0	0	0	0	65
	MAXIMUM ≤ 32°	0	0	0	0	0	0	0	0	0	0	0	0	0	0
	MINIMUM ≤ 32°	1	0	0	0	0	0	0	0	0	0	0	3	4	
MINIMUM ≤ 0°	0	0	0	0	0	0	0	0	0	0	0	0	0		
H/C	HEATING DEGREE DAYS	201	164	16	32	0	0	0	0	0	6	118	293	830	
	COOLING DEGREE DAYS	21	18	98	134	355	440	514	503	471	216	71	40	2881	
RH	MEAN (PERCENT)	75	75	76	71	69	76	79	78	81	77	78	78	76	
	HOUR 01 LST	86	89	89	84	82	88	91	92	89	86	90	85	88	
	HOUR 07 LST	86	90	93	87	86	87	92	93	90	88	91	87	89	
	HOUR 13 LST	55	52	56	51	50	60	63	59	69	61	55	62	58	
	HOUR 19 LST	74	73	71	66	63	72	77	75	82	78	80	80	74	
S	PERCENT POSSIBLE SUNSHINE														
W/O	NUMBER OF DAYS WITH:														
	HEAVY FOG (VISBY ≤ 1/4 MI)	6	3	3	2	2	0	4	0	0	3	3	7	33	
	THUNDERSTORMS	1	1	3	4	3	10	12	7	15	1	2	0	59	
CLOUDINESS	SUNRISE-SUNSET: (OKTAS)														
	CEILOMETER (≤ 12,000 FT.)														
	SATELLITE (> 12,000 FT.)														
	MIDNIGHT-MIDNIGHT: (OKTAS)														
	CEILOMETER (≤ 12,000 FT.)														
SATELLITE (> 12,000 FT.)															
NUMBER OF DAYS WITH:															
CLEAR															
PARTLY CLOUDY															
CLOUDY															
PR	MEAN STATION PRESS. (IN.)	30.16	30.19	30.03	30.02	30.03	30.08	29.98	30.03	29.94	30.08	30.06	30.15	30.06	
	MEAN SEA-LEVEL PRESS. (IN.)	30.19	30.22	30.07	30.05	30.06	30.11	30.01	30.06	29.97	30.11	30.09	30.18	30.09	
WINDS	RESULTANT SPEED (MPH)	2.3	1.8	1.0	1.6	0.4	1.4	1.3	1.8	0.8	6.3	1.3	3.3	1.0	
	RES. DIR. (TENS OF DEGS.)	30	36	07	28	35	16	17	08	05	03	33	35	01	
	MEAN SPEED (MPH)	6.9	6.3	7.8	7.8	7.1	5.8	6.5	5.4	6.8	8.7	5.8	7.0	6.8	
	PREVAIL. DIR. (TENS OF DEGS.)	30	01	02	24	09	09	22	08	08	03	32	32	08	
	MAXIMUM 2-MINUTE WIND:														
	SPEED (MPH)	31	23	32	31	37	30	35	21	33	31	25	28	37	
	DIR. (TENS OF DEGS.)	01	01	25	31	32	22	24	26	05	01	01	02	32	
	DATE OF OCCURRENCE	14	21+	04	15	14	04	14	25+	30	09	19	25	MAY 14	
	MAXIMUM 5-SECOND WIND:														
	SPEED (MPH)	38	29	41	38	46	36	40	28	38	38	33	35	46	
DIR. (TENS OF DEGS.)	01	25	26	30	33	22	26	28	04	01	36	01	33		
DATE OF OCCURRENCE	14	14	04	15	14	04	20+	25	30	09	19	25	MAY 14		
PRECIPITATION	WATER EQUIVALENT:														
	TOTAL (IN.)	1.80	0.65	8.48	1.15	0.32	3.08	5.09	3.17	13.55	0.93	1.14	0.80	40.16	
	GREATEST 24-HOUR (IN.)	0.87	0.36	7.45	0.50	0.17	0.92	1.75	1.88	4.56	0.43	0.79	0.47	7.45	
	DATE OF OCCURRENCE	28-29	27	30-31	13-14	29	22	13-14	25	27-28	03-04	25-26	28	MAR 30-31	
	NUMBER OF DAYS WITH:														
	PRECIPITATION ≥ 0.01	8	5	10	6	2	12	11	9	18	8	5	5	99	
PRECIPITATION ≥ 0.10	5	2	5	5	2	7	10	5	12	4	3	2	62		
PRECIPITATION ≥ 1.00	0	0	2	0	0	0	2	1	5	0	0	0	10		
SNOWFALL	SNOW, ICE PELLETS, HAIL:														
	TOTAL (IN.)														
	GREATEST 24-HOUR (IN.)														
	DATE OF OCCURRENCE														
	NUMBER OF DAYS WITH:														
SNOWFALL ≥ 1.0															

# NORMALS, MEANS, AND EXTREMES

## DAYTONA BEACH, FL (DAB)

LATITUDE: 29° 10' 38" N      LONGITUDE: 81° 03' 36" W      ELEVATION (FT): GRND: 32      BARO: 32      TIME ZONE: EASTERN (UTC + 5)      WBAN: 12834

ELEMENT		POR	JAN	FEB	MAR	APR	MAY	JUN	JUL	AUG	SEP	OCT	NOV	DEC	YEAR
TEMPERATURE °F	NORMAL DAILY MAXIMUM	30	68.0	69.5	74.8	80.0	84.5	88.0	89.8	89.1	86.8	81.5	75.5	70.4	79.8
	MEAN DAILY MAXIMUM	53	68.8	70.5	74.8	79.7	84.9	88.4	90.1	89.3	86.9	81.6	75.5	70.2	80.1
	HIGHEST DAILY MAXIMUM	57	87	89	92	96	100	102	102	100	99	95	89	88	102
	YEAR OF OCCURRENCE		1991	1985	1994	1968	1953	1944	1981	1999	1944	1959	1948	1990	JUL 1981
	MEAN OF EXTREME MAXS.	53	81.7	83.4	87.1	90.1	93.0	95.0	95.6	94.6	92.2	89.1	84.6	82.1	89.0
	NORMAL DAILY MINIMUM	30	46.9	48.4	53.9	58.6	64.9	70.8	72.5	72.9	71.9	65.2	56.3	49.7	61.0
	MEAN DAILY MINIMUM	53	47.6	49.3	53.6	58.6	65.0	70.5	72.3	72.7	71.9	65.4	56.0	49.6	61.0
	LOWEST DAILY MINIMUM	57	15	24	26	35	44	52	60	65	52	41	27	19	15
	YEAR OF OCCURRENCE		1985	1958	1980	1950	1971	1984	1981	1984	1956	1993	1950	1983	JAN 1985
	MEAN OF EXTREME MINS.	53	30.4	33.3	37.3	45.1	54.3	63.6	67.9	68.8	65.3	50.8	40.1	32.3	49.1
	NORMAL DRY BULB	30	57.5	59.0	64.3	69.3	74.7	79.4	81.2	81.0	79.4	73.4	65.9	60.1	70.4
	MEAN DRY BULB	53	58.2	59.8	64.2	69.2	74.9	79.5	81.2	81.0	79.4	73.5	65.8	59.9	70.6
	MEAN WET BULB	17	54.4	55.7	59.0	62.5	68.7	73.5	75.1	71.1	74.2	68.5	62.4	56.1	65.1
	MEAN DEW POINT	17	50.4	51.5	54.7	58.0	64.9	70.9	72.9	69.2	72.0	65.6	59.4	52.6	61.8
	NORMAL NO. DAYS WITH:														
MAXIMUM ≥ 90°	30	0.0	0.0	0.1	1.7	4.4	9.7	16.1	13.4	5.3	0.7	0.0	0.0	51.4	
MAXIMUM ≤ 32°	30	0.0	0.0	0.0	0.0	0.0	0.0	0.0	0.0	0.0	0.0	0.0	0.0	0.0	
MINIMUM ≤ 32°	30	2.8	1.1	0.3	0.0	0.0	0.0	0.0	0.0	0.0	0.0	0.1	1.6	5.9	
MINIMUM ≤ 0°	30	0.0	0.0	0.0	0.0	0.0	0.0	0.0	0.0	0.0	0.0	0.0	0.0	0.0	
H/C	NORMAL HEATING DEG. DAYS	30	282	205	112	21	0	0	0	0	0	0	82	207	909
	NORMAL COOLING DEG. DAYS	30	50	37	90	150	301	432	502	496	432	265	109	55	2919
RH	NORMAL (PERCENT)	30	75	72	71	69	72	77	78	80	79	75	76	76	75
	HOUR 01 LST	30	84	82	82	81	83	86	87	89	87	83	84	84	84
	HOUR 07 LST	30	85	84	85	84	84	86	88	90	88	85	86	85	86
	HOUR 13 LST	30	59	56	54	51	56	63	64	66	66	61	60	59	60
	HOUR 19 LST	30	75	71	69	65	69	75	76	79	78	75	78	78	74
S	PERCENT POSSIBLE SUNSHINE														
W/O	MEAN NO. DAYS WITH:														
	HEAVY FOG (VISBY ≤ 1/4 MI)	57	5.0	3.3	2.9	1.8	1.5	1.1	1.1	1.3	0.7	1.5	2.7	4.5	27.4
	THUNDERSTORMS	57	1.2	1.8	3.4	3.5	7.4	13.3	17.1	15.1	8.9	3.0	1.3	1.2	77.2
CLOUDINESS	MEAN:														
	SUNRISE-SUNSET (OKTAS)	0			5.6		3.2	4.0							
	MIDNIGHT-MIDNIGHT (OKTAS)	0			5.6			4.0							
	MEAN NO. DAYS WITH:														
	CLEAR	1	1.0	4.0	7.0		13.0	4.0							
PARTLY CLOUDY	1	2.0	4.0	4.0		5.0	11.0								
CLOUDY	1	2.0	2.0	8.0		3.0	6.0								
PR	MEAN STATION PRESSURE (IN)	28	30.10	30.09	30.00	30.00	30.00	30.00	30.00	30.00	30.00	30.00	30.00	30.09	30.02
	MEAN SEA-LEVEL PRES. (IN)	17	30.13	30.11	30.06	30.02	30.01	30.03	30.07	30.03	30.01	30.03	30.10	30.13	30.06
WINDS	MEAN SPEED (MPH)	36	8.7	9.4	9.7	9.5	8.8	7.8	7.1	7.0	8.1	8.9	8.4	8.2	8.5
	PREVAIL. DIR (TENS OF DEGS)	21	36	36	24	24	12	08	24	12	06	07	31	32	08
	MAXIMUM 2-MINUTE:														
	SPEED (MPH)	5	36	44	38	31	46	36	35	41	41	46	29	29	46
	DIR. (TENS OF DEGS)		23	23	33	31	28	22	24	28	36	03	01	26	03
	YEAR OF OCCURRENCE		1998	1998	1996	2000	1996	1997	2000	1996	1999	1999	1999	1997	OCT 1999
	MAXIMUM 5-SECOND:														
SPEED (MPH)	5	44	56	53	40	55	47	54	51	64	56	34	38	64	
DIR. (TENS OF DEGS)		23	22	33	20	28	21	36	32	36	01	01	26	36	
YEAR OF OCCURRENCE		1998	1998	1996	1997	1996	1997	1998	1998	1999	1999	1999	1997	SEP 1999	
PRECIPITATION	NORMAL (IN)	30	2.75	3.11	2.90	2.23	3.45	5.99	5.40	6.16	6.34	4.13	2.84	2.59	47.89
	MAXIMUM MONTHLY (IN)	57	7.16	9.13	12.15	7.12	12.33	15.19	14.58	19.89	15.20	13.00	12.91	11.98	19.89
	YEAR OF OCCURRENCE		1986	1960	1996	1949	1976	1966	1944	1953	1979	1950	1994	1983	AUG 1953
	MINIMUM MONTHLY (IN)	57	0.15	0.29	0.25	T	0.08	0.83	0.16	2.01	0.42	0.19	T	0.06	T
	YEAR OF OCCURRENCE		1950	1944	1956	1967	1965	1998	1992	1963	1972	1967	1967	1956	NOV 1967
	MAXIMUM IN 24 HOURS (IN)	57	5.73	4.39	7.45	4.03	4.22	6.28	4.21	4.76	6.34	9.29	10.15	5.22	10.15
	YEAR OF OCCURRENCE		1989	1971	2000	1982	1947	1966	1986	1974	1964	1953	1994	1983	NOV 1994
	NORMAL NO. DAYS WITH:														
	PRECIPITATION ≥ 0.01	30	7.7	8.0	7.8	4.8	8.1	12.2	12.6	13.3	12.2	9.9	7.3	7.4	111.3
	PRECIPITATION ≥ 1.00	30	0.7	0.9	1.0	0.7	1.0	1.6	1.6	1.7	2.2	1.3	0.7	0.6	14.0
SNOWFALL	NORMAL (IN)	30	T	0.0	0.0	0.0	0.0	0.0	0.0	0.0	0.0	0.0	0.0	T	0.0
	MAXIMUM MONTHLY (IN)	53	T	T	T	0.0	0.0	T	0.0	T	0.0	0.0	0.0	T	T
	YEAR OF OCCURRENCE		1977	1951	1993			1989		1994				1989	AUG 1994
	MAXIMUM IN 24 HOURS (IN)	53	T	T	T	0.0	0.0	T	0.0	T	0.0	0.0	0.0	T	T
	YEAR OF OCCURRENCE		1977	1951	1993			1989		1994				1989	AUG 1994
	MAXIMUM SNOW DEPTH (IN)	48	0	0	0	0	0	0	0	0	0	0	0	0	0
	YEAR OF OCCURRENCE														
NORMAL NO. DAYS WITH:															
SNOWFALL ≥ 1.0	30	0.0	0.0	0.0	0.0	0.0	0.0	0.0	0.0	0.0	0.0	0.0	0.0	0.0	

PRECIPITATION (inches) 2000 DAYTONA BEACH, FL (DAB)

YEAR	JAN	FEB	MAR	APR	MAY	JUN	JUL	AUG	SEP	OCT	NOV	DEC	ANNUAL
1971	0.61	5.48	2.00	2.57	3.12	4.73	3.20	3.97	7.20	9.53	1.33	2.49	46.23
1972	2.37	3.97	6.66	1.41	4.02	7.06	3.22	8.29	0.42	3.08	10.96	2.48	53.94
1973	4.66	2.02	2.63	3.09	2.41	4.32	4.69	7.58	5.14	4.40	0.75	2.54	44.23
1974	0.30	1.10	3.19	0.44	2.66	8.65	6.31	9.96	10.50	1.42	0.48	2.20	47.21
1975	1.66	2.27	1.52	2.96	2.99	9.00	6.89	3.16	6.61	5.84	1.46	0.83	45.19
1976	0.60	0.70	2.03	4.27	12.33	11.14	1.07	3.80	5.10	1.90	3.38	6.00	52.32
1977	4.69	2.45	1.43	0.41	4.61	1.15	2.23	7.91	6.55	1.46	3.04	4.74	40.67
1978	2.89	5.98	2.31	3.30	0.56	7.48	5.53	7.99	4.63	8.31	0.07	4.89	53.94
1979	7.10	1.94	4.08	3.96	6.13	3.03	11.69	5.24	15.20	2.13	7.96	0.56	69.02
1980	3.75	0.76	2.41	2.54	3.62	5.57	5.82	4.13	1.83	2.42	3.12	1.39	37.36
1981	0.32	5.54	3.00	0.29	1.74	1.03	4.69	7.19	7.59	1.08	2.57	4.64	39.68
1982	2.46	2.08	5.81	6.04	4.68	8.29	5.31	3.21	4.96	3.23	1.58	2.53	50.18
1983	2.51	5.96	7.71	6.17	3.86	6.37	1.92	6.82	8.57	10.11	2.01	11.98	73.99
1984	1.46	3.44	1.31	5.29	6.04	2.84	6.77	4.02	10.73	1.09	3.52	0.20	46.71
1985	0.79	0.58	1.49	3.14	3.42	6.81	2.16	9.83	10.62	4.08	0.41	2.05	45.38
1986	7.16	1.28	1.85	0.44	0.99	3.50	14.43	3.47	3.58	3.47	5.08	2.76	48.01
1987	2.21	6.64	7.94	0.28	2.65	3.81	2.78	4.89	5.63	2.77	5.87	0.25	45.72
1988	5.36	1.72	4.57	1.68	1.78	2.39	2.94	4.79	6.81	1.24	6.70	0.93	40.91
1989	6.82	0.64	2.01	2.92	2.02	1.84	2.44	4.47	5.04	11.64	0.88	3.93	44.65
1990	1.42	5.61	1.94	1.48	1.45	2.71	5.85	7.00	1.61	5.88	0.83	0.34	36.12
1991	2.25	1.65	8.11	5.57	6.79	12.67	11.97	7.60	5.52	2.94	0.61	1.51	67.19
1992	2.42	1.71	2.28	2.81	3.13	10.64	0.16	8.86	6.57	5.21	2.15	0.47	46.41
1993	4.29	3.02	5.56	0.33	0.65	2.19	5.05	2.66	2.74	5.53	1.83	1.86	35.71
1994	5.60	2.66	3.44	5.05	3.09	6.54	6.91	7.08	5.93	4.72	12.91	2.71	66.64
1995	1.53	1.39	2.01	1.34	1.26	6.60	6.59	10.71	14.13	3.99	1.44	3.44	54.43
1996	5.53	1.32	12.15	2.22	2.28	11.35	1.90	5.70	3.92	11.15	0.96	2.01	60.49
1997	2.03	0.46	2.30	3.30	3.77	6.38	7.69	7.91	4.78	5.29	3.02	7.76	54.69
1998	4.33	7.25	3.97	0.14	0.16	0.83	5.63	7.56	5.79	1.84	1.66	1.35	40.51
1999	4.88	1.81	1.01	1.48	1.47	8.54	4.03	3.58	7.05	7.84	3.12	1.56	46.37
2000	1.80	0.65	8.48	1.15	0.32	3.08	5.09	3.17	13.55	0.93	1.14	0.80	40.16
POR= 66 YRS	2.52	2.90	3.46	2.47	2.93	6.02	6.01	6.25	6.82	4.85	2.56	2.34	49.13

WBAN : 12834

AVERAGE TEMPERATURE (°F) 2000 DAYTONA BEACH, FL (DAB)

YEAR	JAN	FEB	MAR	APR	MAY	JUN	JUL	AUG	SEP	OCT	NOV	DEC	ANNUAL
1971	58.6	59.9	60.0	68.0	73.3	78.7	80.5	80.7	79.6	76.1	65.9	67.8	70.8
1972	65.5	59.0	64.7	70.8	74.4	79.6	80.7	80.2	78.7	75.0	67.3	63.5	71.6
1973	58.9	56.3	68.2	68.7	75.2	79.8	81.9	80.3	80.8	75.0	69.6	58.4	71.1
1974	69.5	59.5	68.5	69.3	76.0	78.6	79.2	80.3	80.5	72.0	65.5	59.5	71.5
1975	63.6	65.7	65.6	70.1	77.2	79.5	80.5	80.5	79.6	75.2	66.8	58.6	71.9
1976	54.4	61.1	68.1	67.7	73.3	77.4	80.9	80.0	78.3	70.4	60.5	59.4	69.3
1977	50.6	55.5	68.9	70.0	74.8	82.3	82.6	82.6	80.8	70.8	67.1	58.3	70.4
1978	53.9	52.1	62.3	71.3	77.3	81.5	82.7	82.3	80.7	74.2	71.1	65.6	71.3
1979	56.7	57.1	64.4	72.3	75.5	78.7	82.1	80.0	80.2	72.9	66.1	59.6	70.5
1980	57.7	55.3	66.3	68.8	74.9	79.2	82.8	82.1	80.3	72.7	65.3	57.0	70.2
1981	48.8	59.2	60.4	70.5	73.5	82.0	82.8	81.5	77.7	73.8	62.7	57.1	69.2
1982	56.6	64.4	66.8	69.4	72.6	79.5	80.0	79.9	77.9	71.5	68.8	64.0	71.0
1983	53.9	57.2	60.2	64.3	72.4	77.0	81.7	81.1	77.8	73.5	62.6	58.1	68.3
1984	55.1	58.0	61.8	66.8	72.4	76.3	79.0	81.4	79.5	75.7	66.5	65.2	69.8
1985	53.7	61.0	66.6	69.4	76.1	81.7	80.6	81.4	78.3	76.8	71.2	56.1	71.1
1986	56.7	62.4	63.1	66.3	73.8	79.9	81.4	81.4	79.6	75.3	72.5	64.7	71.4
1987	55.8	59.7	63.3	65.1	74.3	79.7	81.9	82.3	79.6	70.0	66.5	61.9	70.0
1988	55.1	56.8	62.8	69.1	72.6	79.0	81.2	81.5	80.6	70.7	67.5	59.8	69.7
1989	64.8	61.9	67.8	69.5	75.4	80.3	82.7	81.8	80.5	73.4	65.9	53.3	71.4
1990	62.7	67.5	66.4	69.6	77.3	80.7	81.9	81.9	80.5	76.0	67.4	65.1	73.1
1991	63.4	61.9	65.6	73.7	78.5	80.3	82.5	82.4	80.8	73.8	64.4	63.5	72.6
1992	56.5	61.7	63.3	67.2	72.5	80.5	83.4	80.7	79.8	72.3	69.1	61.4	70.7
1993	64.5	57.5	62.9	65.5	72.7	80.0	82.5	81.9	79.6	73.7	66.9	56.4	70.3
1994	58.1	63.8	65.8	72.3	75.0	80.2	80.5	79.9	78.2	74.9	70.1	62.9	71.8
1995	56.5	58.7	66.0	70.3	79.0	79.0	81.2	81.3	79.5	76.4	62.8	58.1	70.7
1996	56.8	59.2	60.7	66.7	75.6	78.2	81.2	79.5	78.9	72.9	66.2	60.8	69.7
1997	59.0	64.7	69.9	67.8	74.0	78.4	81.6	81.5	79.3	73.2	64.3	59.4	71.1
1998	60.6	60.2	61.2	69.9	76.6	84.5	83.5	82.4	80.7	76.5	70.8	66.0	72.7
1999	62.0	62.1	62.2	72.4	74.5	79.6	82.4	82.9	79.0	74.4	67.3	60.0	71.6
2000	59.0	59.7	67.4	68.2	76.3	79.5	81.4	81.0	80.5	71.6	63.2	56.6	70.4
POR= 66 YRS	58.4	59.7	64.5	69.3	74.7	79.4	81.0	80.9	79.3	73.4	65.8	60.0	70.5

HEATING DEGREE DAYS (base 65°F) 2000 DAYTONA BEACH, FL (DAB)

YEAR	JUL	AUG	SEP	OCT	NOV	DEC	JAN	FEB	MAR	APR	MAY	JUN	TOTAL
1971-72	0	0	0	0	71	19	85	182	69	15	0	0	441
1972-73	0	0	0	0	62	139	226	251	38	29	0	0	745
1973-74	0	0	0	10	15	239	0	197	30	24	0	0	515
1974-75	0	0	0	0	69	201	108	69	91	30	0	0	568
1975-76	0	0	0	0	102	222	334	143	34	16	0	0	851
1976-77	0	0	0	11	168	209	444	273	53	20	0	0	1178
1977-78	0	0	0	23	63	241	352	356	132	5	0	0	1172
1978-79	0	0	0	0	4	71	279	244	79	5	0	0	682
1979-80	0	0	0	0	75	183	234	297	84	16	0	0	889
1980-81	0	0	0	11	93	247	497	184	171	0	1	0	1204
1981-82	0	0	0	0	127	284	273	72	63	26	0	0	845
1982-83	0	0	0	24	21	125	345	220	167	74	2	0	978
1983-84	0	0	0	2	126	255	323	215	148	37	3	0	1109
1984-85	0	0	0	0	63	77	372	173	44	21	0	0	750
1985-86	0	0	0	0	24	303	261	119	141	30	0	0	878
1986-87	0	0	0	0	11	84	301	160	99	81	0	0	736
1987-88	0	0	0	10	74	146	316	259	120	23	0	0	948
1988-89	0	0	0	1	39	187	70	154	68	20	1	0	540
1989-90	0	0	0	31	59	369	120	47	37	14	0	0	677
1990-91	0	0	0	9	35	96	114	126	83	9	0	0	472
1991-92	0	0	0	0	110	114	264	139	106	43	15	0	791
1992-93	0	0	0	0	70	136	104	210	107	49	0	0	676
1993-94	0	0	0	12	62	281	230	100	70	10	0	0	765
1994-95	0	0	0	0	10	117	269	200	41	16	0	0	653
1995-96	0	0	0	3	135	239	272	212	197	55	0	0	1113
1996-97	0	0	0	11	62	155	204	80	12	23	1	0	548
1997-98	0	0	0	8	69	215	171	159	174	22	0	0	818
1998-99	0	0	0	0	10	88	141	126	105	17	6	0	493
1999-00	0	0	0	6	30	174	201	164	16	32	0	0	623
2000-	0	0	0	6	118	293							

WBAN : 12834

COOLING DEGREE DAYS (base 65°F) 2000 DAYTONA BEACH, FL (DAB)

YEAR	JAN	FEB	MAR	APR	MAY	JUN	JUL	AUG	SEP	OCT	NOV	DEC	ANNUAL
1971	39	65	45	150	270	420	484	495	445	348	106	113	2980
1972	107	16	67	193	299	447	494	477	415	317	138	98	3068
1973	45	14	148	148	324	450	527	482	483	326	156	40	3143
1974	147	50	145	159	349	414	447	480	469	223	90	40	3013
1975	71	95	118	191	386	441	488	487	445	325	163	29	3239
1976	12	36	136	104	264	378	497	471	406	186	39	40	2569
1977	4	12	181	177	310	527	553	554	478	212	131	41	3180
1978	14	0	56	198	388	499	553	543	477	295	192	94	3309
1979	26	28	68	231	332	419	538	471	462	252	111	23	2961
1980	12	21	131	135	315	435	559	538	467	258	109	5	2985
1981	0	25	37	172	269	516	559	521	385	282	65	47	2878
1982	19	61	127	166	240	440	472	470	392	234	141	97	2859
1983	6	6	28	57	238	369	521	504	391	270	62	46	2498
1984	22	20	55	96	238	345	442	515	441	338	114	91	2717
1985	29	67	101	160	348	506	490	511	405	373	217	35	3242
1986	13	50	89	79	280	452	516	515	444	324	246	82	3090
1987	20	17	52	92	297	449	530	543	442	171	125	58	2796
1988	17	27	62	155	242	425	509	518	474	185	121	32	2767
1989	71	74	162	162	331	468	553	530	474	299	94	11	3229
1990	55	124	85	161	385	478	531	528	470	355	114	107	3393
1991	71	45	113	278	426	465	548	548	480	278	98	74	3424
1992	8	51	60	118	256	472	577	492	448	231	196	35	2944
1993	95	7	48	71	245	456	551	534	446	289	126	23	2891
1994	23	73	101	237	318	466	487	468	402	315	170	57	3117
1995	12	29	81	182	442	426	507	511	441	365	74	32	3102
1996	24	50	72	114	338	402	505	459	427	262	106	29	2788
1997	26	77	170	113	283	405	522	519	436	269	55	47	2922
1998	42	29	64	176	369	592	581	546	479	363	191	124	3556
1999	54	47	26	249	307	442	548	561	429	304	106	29	3102
2000	21	18	98	134	355	440	514	503	471	216	71	40	2881

SNOWFALL (inches) 2000 DAYTONA BEACH, FL (DAB)

YEAR	JUL	AUG	SEP	OCT	NOV	DEC	JAN	FEB	MAR	APR	MAY	JUN	TOTAL
1971-72	0.0	0.0	0.0	0.0	0.0	0.0	0.0	0.0	0.0	0.0	0.0	0.0	0.0
1972-73	0.0	0.0	0.0	0.0	0.0	0.0	0.0	0.0	0.0	0.0	0.0	0.0	0.0
1973-74	0.0	0.0	0.0	0.0	0.0	0.0	0.0	0.0	0.0	0.0	0.0	0.0	0.0
1974-75	0.0	0.0	0.0	0.0	0.0	0.0	0.0	0.0	0.0	0.0	0.0	0.0	0.0
1975-76	0.0	0.0	0.0	0.0	0.0	0.0	0.0	0.0	0.0	0.0	0.0	0.0	0.0
1976-77	0.0	0.0	0.0	0.0	0.0	0.0	T	0.0	0.0	0.0	0.0	0.0	T
1977-78	0.0	0.0	0.0	0.0	0.0	0.0	0.0	0.0	0.0	0.0	0.0	0.0	0.0
1978-79	0.0	0.0	0.0	0.0	0.0	0.0	0.0	0.0	0.0	0.0	0.0	0.0	0.0
1979-80	0.0	0.0	0.0	0.0	0.0	0.0	0.0	0.0	0.0	0.0	0.0	0.0	0.0
1980-81	0.0	0.0	0.0	0.0	0.0	0.0	0.0	0.0	0.0	0.0	0.0	0.0	0.0
1981-82	0.0	0.0	0.0	0.0	0.0	0.0	0.0	0.0	0.0	0.0	0.0	0.0	0.0
1982-83	0.0	0.0	0.0	0.0	0.0	0.0	0.0	0.0	0.0	0.0	0.0	0.0	0.0
1983-84	0.0	0.0	0.0	0.0	0.0	0.0	0.0	0.0	0.0	0.0	0.0	0.0	0.0
1984-85	0.0	0.0	0.0	0.0	0.0	0.0	0.0	0.0	0.0	0.0	0.0	0.0	0.0
1985-86	0.0	0.0	0.0	0.0	0.0	0.0	0.0	0.0	0.0	0.0	0.0	0.0	0.0
1986-87	0.0	0.0	0.0	0.0	0.0	0.0	0.0	0.0	0.0	0.0	0.0	0.0	0.0
1987-88	0.0	0.0	0.0	0.0	0.0	0.0	0.0	0.0	0.0	0.0	0.0	0.0	0.0
1988-89	0.0	0.0	0.0	0.0	0.0	0.0	0.0	0.0	0.0	0.0	0.0	T	T
1989-90	0.0	0.0	0.0	0.0	0.0	T	0.0	0.0	0.0	0.0	0.0	0.0	T
1990-91	0.0	0.0	0.0	0.0	0.0	0.0	0.0	0.0	0.0	0.0	0.0	0.0	0.0
1991-92	0.0	0.0	0.0	0.0	0.0	0.0	0.0	0.0	0.0	0.0	0.0	0.0	0.0
1992-93	0.0	0.0	0.0	0.0	0.0	0.0	0.0	0.0	T	0.0	0.0	0.0	T
1993-94	0.0	0.0	0.0	0.0	0.0	0.0	0.0	0.0	0.0	0.0	0.0	0.0	0.0
1994-95	0.0	T	0.0	0.0	0.0	0.0	0.0	0.0	0.0	0.0	0.0	0.0	T
1995-96	0.0	0.0	0.0	0.0	0.0	0.0	0.0	0.0	0.0	0.0	0.0	0.0	T
1996-97													
1997-98													
1998-99													
1999-00													
2000-													
POR= 52 YRS	0.0	T	0.0	0.0	0.0	T	T	T	T	0.0	0.0	T	T

WBAN : 12834

REFERENCE NOTES:

<p>PAGE 1: THE TEMPERATURE GRAPH SHOWS NORMAL MAXIMUM AND NORMAL MINIMUM DAILY TEMPERATURES (SOLID CURVES) AND THE ACTUAL DAILY HIGH AND LOW TEMPERATURES (VERTICAL BARS).</p> <p>PAGE 2 AND 3: H/C INDICATES HEATING AND COOLING DEGREE DAYS. RH INDICATES RELATIVE HUMIDITY W/O INDICATES WEATHER AND OBSTRUCTIONS S INDICATES SUNSHINE. PR INDICATES PRESSURE. CLOUDINESS ON PAGE 3 IS THE SUM OF THE CEILOMETER AND SATELLITE DATA NOT TO EXCEED EIGHT EIGHTHS(OKTAS).</p> <p>GENERAL: T INDICATES TRACE PRECIPITATION, AN AMOUNT GREATER THAN ZERO BUT LESS THAN THE LOWEST REPORTABLE VALUE. + INDICATES THE VALUE ALSO OCCURS ON EARLIER DATES. BLANK ENTRIES DENOTE MISSING OR UNREPORTED DATA. NORMALS ARE 30-YEAR AVERAGES (1961 - 1990). ASOS INDICATES AUTOMATED SURFACE OBSERVING SYSTEM. PM INDICATES THE LAST DAY OF THE PREVIOUS MONTH. POR (PERIOD OF RECORD) BEGINS WITH THE JANUARY DATA MONTH AND IS THE NUMBER OF YEARS USED TO COMPUTE THE MEAN. INDIVIDUAL MONTHS WITHIN THE POR MAY BE MISSING. WHEN THE POR FOR A NORMAL IS LESS THAN 30 YEARS, THE NORMAL IS PROVISIONAL AND IS BASED ON THE NUMBER OF YEARS INDICATED. 0.* OR * INDICATES THE VALUE OR MEAN-DAYS-WITH IS BETWEEN 0.00 AND 0.05. CLOUDINESS FOR ASOS STATIONS DIFFERS FROM THE NON-ASOS OBSERVATION TAKEN BY A HUMAN OBSERVER. ASOS STATION CLOUDINESS IS BASED ON TIME-AVERAGED CEILOMETER DATA FOR CLOUDS AT OR BELOW 12,000 FEET AND ON SATELLITE DATA FOR CLOUDS ABOVE 12,000 FEET. THE NUMBER OF DAYS WITH CLEAR, PARTLY CLOUDY, AND CLOUDY CONDITIONS FOR ASOS STATIONS IS THE SUM OF THE CEILOMETER AND SATELLITE DATA FOR THE SUNRISE TO SUNSET PERIOD.</p>	<p>GENERAL CONTINUED: CLEAR INDICATES 0 - 2 OKTAS, PARTLY CLOUDY INDICATES 3 - 6 OKTAS, AND CLOUDY INDICATES 7 OR 8 OKTAS. WHEN AT LEAST ONE OF THE ELEMENTS (CEILOMETER OR SATELLITE) IS MISSING, THE DAILY CLOUDINESS IS NOT COMPUTED. WIND DIRECTION IS RECORDED IN TENS OF DEGREES (2 DIGITS) CLOCKWISE FROM TRUE NORTH. "00" INDICATES CALM. "36" INDICATES TRUE NORTH. RESULTANT WIND IS THE VECTOR AVERAGE OF THE SPEED AND DIRECTION. AVERAGE TEMPERATURE IS THE SUM OF THE MEAN DAILY MAXIMUM AND MINIMUM TEMPERATURE DIVIDED BY 2. SNOWFALL DATA COMPRISE ALL FORMS OF FROZEN PRECIPITATION, INCLUDING HAIL. A HEATING (COOLING) DEGREE DAY IS THE DIFFERENCE BETWEEN THE AVERAGE DAILY TEMPERATURE AND 65° F. DRY BULB IS THE TEMPERATURE OF THE AMBIENT AIR. DEW POINT IS THE TEMPERATURE TO WHICH THE AIR MUST BE COOLED TO ACHIEVE 100 PERCENT RELATIVE HUMIDITY. WET BULB IS THE TEMPERATURE THE AIR WOULD HAVE IF THE MOISTURE CONTENT WAS INCREASED TO 100 PERCENT RELATIVE HUMIDITY.</p> <p>ON JULY 1, 1996, THE NATIONAL WEATHER SERVICE BEGAN USING THE "METAR" OBSERVATION CODE THAT WAS ALREADY EMPLOYED BY MOST OTHER NATIONS OF THE WORLD. THE MOST NOTICEABLE DIFFERENCE IN THIS ANNUAL PUBLICATION WILL BE THE CHANGE IN UNITS FROM TENTHS TO EIGHTS(OKTAS) FOR REPORTING THE AMOUNT OF SKY COVER.</p>
---	--

2000  
DAYTONA BEACH,  
FLORIDA (DAB)

Daytona Beach is located on the Atlantic Ocean. The Halifax River, part of the Florida Inland Waterway, runs through the city. The terrain in the area is flat and the soil is mostly sandy. Elevations in the area range from 3 to 15 feet above mean sea level near the ocean to about 31 feet at the airport and on a ridge running along the western city limits.

Nearness to the ocean results in a climate tempered by the effect of land and sea breezes. In the summer, while maximum temperatures reach 90 degrees or above during the late morning or early afternoon, the number of hours of 90 degrees or above is relatively small due to the beginning of the sea breeze near midday and the occurrence of local afternoon convective thunderstorms which lower the temperature to the comfortable 80s. Winters, although subject to invasions of cold air, are relatively mild due to the nearness of the ocean and latitudinal location.

The rainy season from June through mid-October produces 60 percent of the annual rainfall. The major portion of the summer rainfall occurs in the form of local convective thunderstorms which are occasionally heavy and produce as much as 2 or 3 inches of rain. The more severe thunderstorms may be attended by strong gusty winds. Almost all rainfall during the winter months is associated with frontal passages.

Long periods of cloudiness and rain are infrequent, usually not lasting over 2 or 3 days. These periods are usually associated with a stationary front, a so-called northeaster, or a tropical disturbance.

Tropical disturbances or hurricanes are not considered a great threat to this area of the state. Generally hurricanes in this latitude tend to pass well offshore or lose much of their intensity while crossing the state before reaching this area. Only in gusts have hurricane-force winds been recorded at this station.

Heavy fog occurs mostly during the winter and early spring. These fogs usually form by radiational cooling at night and dissipate soon after sunrise. On rare occasions sea fog moves in from the ocean and persists for two or three days. There is no significant source in the area for air pollution.

# STATION LOCATION

DAYTONA BEACH, FLORIDA

LOCATION	Occupied From	Occupied To	Airline Distances and Directions from previous Location	LATITUDE NORTH	LONGITUDE WEST	ELEVATION ABOVE										AUTOMATIC OBSERVING EQUIPMENT *	* TYPE M = AMOS T = AUTOB S = ASOS W = AWOS  REMARKS
						GROUND											
						SEA LEVEL	WIND INSTRUMENT	EXTREME THERMOMETERS	PSYCHROMETER	SUNSHINE SWITCH	TIPPING GAUGE	WEIGHING RAIN GAUGE	8 INCH RAIN GAUGE	HYGROMETER			
<b>*NOTE:</b> <b>AIRPORT</b> New Tower Building Municipal Airport + Regional Airport effective 10/1/69	3/28/59	11/14/70	50 ft. SE	29°11'	81°03'	31	23	5	5			5	b4	4	a5	a. Telepsychrometer (4') 3/28/59-9/1/59. Hygro. comm. 467' ESE inst. shelter 9/1/59. b. Effective 5/13/65.	
Building #18 Regional Airport	12/14/70	6/7/79	360 ft. SW	29°11'	81°03'	31	c23	5	5		d4	4	4	c5	c. Not moved 12/14/70. d. Installed 8/15/77.		
1580 Bellevue Ave. Regional Airport	6/7/79	06/01/95	0.6 mi. SE	29°11'	81°03'	29	e23 f30	5	5		5	5		e5 f5 g5	e. Not moved 6/7/79. f. Moved 6/22/79 g. Type change 8/28/85.		
International Airport	0 6/01/95	Present	NA	29°11'	81°04'	32									S	ASOS Commissioned 06/01/95	

SUBSCRIPTION: Price and ordering information available through : National ClimaticDataCenter, Federal building, Asheville, North Carolina 28801.

**INQUIRIES/COMMENTS CALL: Toll Free (866) 742-3322**

OFFICAL BUSINESS  
PENALTY FOR PRIVATE USE \$300  
CHANGE SERVICE REQUESTED

**FIRST CLASS**  
**POSTAGE & FEES PAID**  
United States Department of Commerce  
NOAA Permit No. G - 19

NCDC Subscription Services Center  
310 State Route 956 Building 300  
Rocket Center, WV 26726

\* NOTES: For earlier station history see previous editions.