

1999

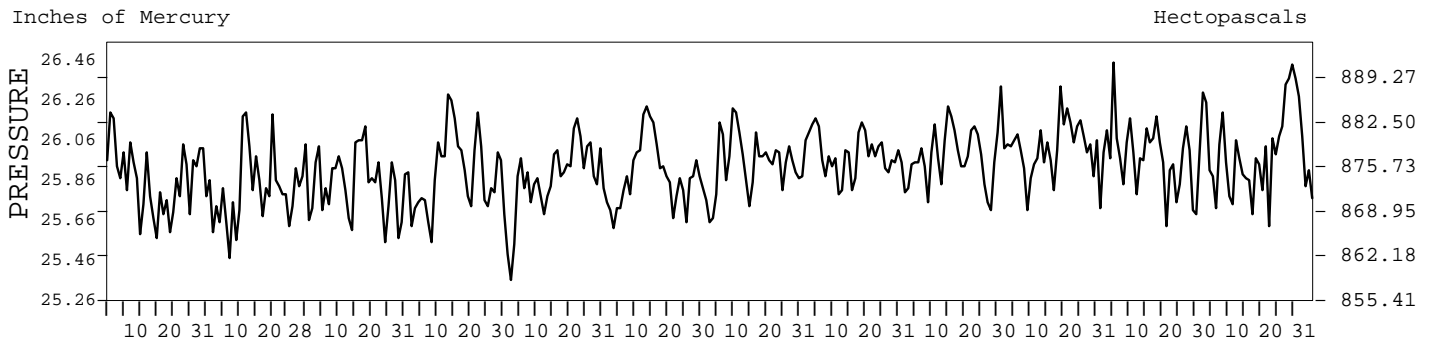
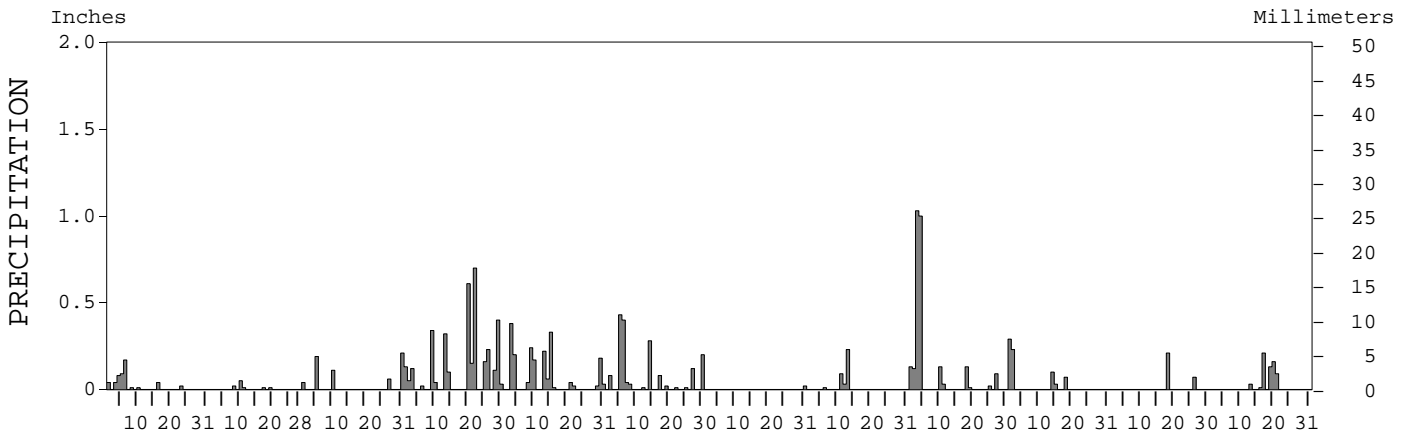
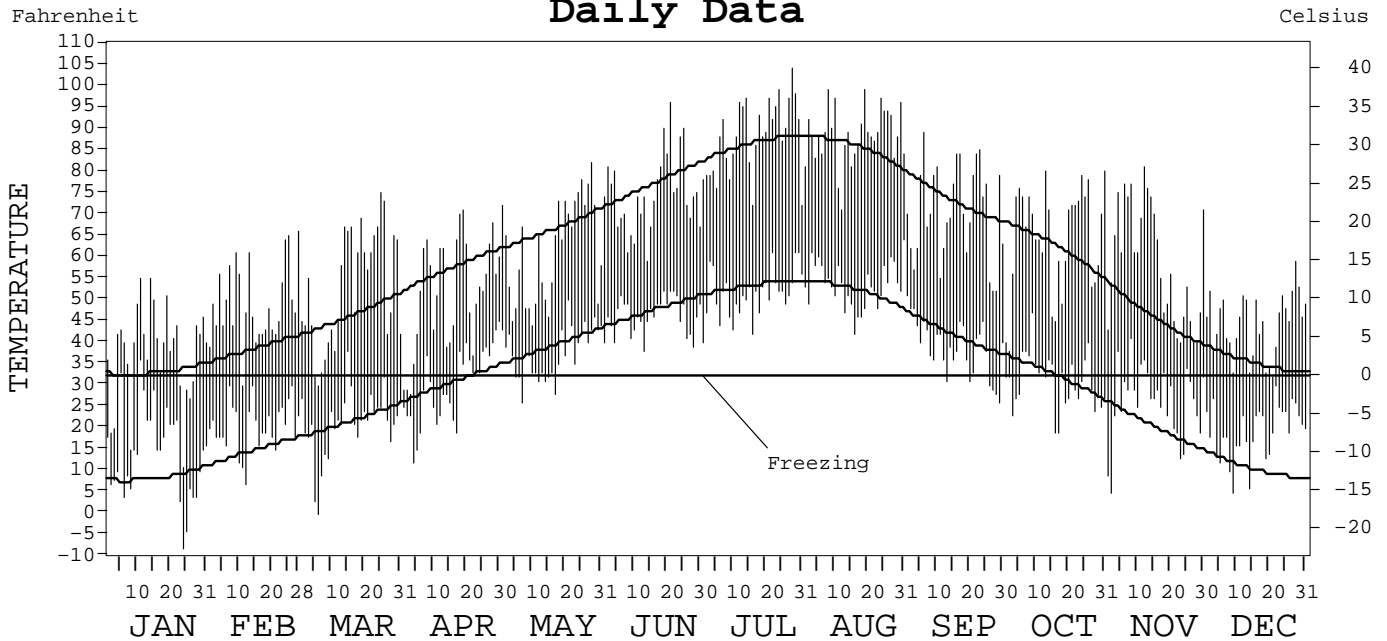
LOCAL CLIMATOLOGICAL DATA  
ANNUAL SUMMARY WITH COMPARATIVE DATA



ISSN 0198-5825

SHERIDAN,  
WYOMING (SHR)

Daily Data



I CERTIFY THAT THIS IS AN OFFICIAL PUBLICATION OF THE NATIONAL OCEANIC AND ATMOSPHERIC ADMINISTRATION, AND IS COMPILED FROM RECORDS ON FILE AT THE NATIONAL CLIMATIC DATA CENTER.

*Thomas R. Karl*

NATIONAL OCEANIC AND ATMOSPHERIC ADMINISTRATION  
 NATIONAL ENVIRONMENTAL AND INFORMATION SERVICE  
 NATIONAL ENVIRONMENTAL AND INFORMATION SERVICE  
 NATIONAL CLIMATIC DATA CENTER  
 NATIONAL CLIMATIC DATA CENTER  
 DIRECTOR NATIONAL CLIMATIC DATA CENTER  
 ASHEVILLE, NORTH CAROLINA

# METEOROLOGICAL DATA FOR 1999

## SHERIDAN, WY (SHR)

LATITUDE: 44° 46' 26" N      LONGITUDE: 106° 58' 35" W      ELEVATION (FT): GRND: 3943      BARO: 3943      TIME ZONE: MOUNTAIN (UTC + 7)      WBAN: 24029

	ELEMENT	JAN	FEB	MAR	APR	MAY	JUN	JUL	AUG	SEP	OCT	NOV	DEC	YEAR	
TEMPERATURE °F	MEAN DAILY MAXIMUM	37.6	49.1	52.9	51.6	61.7	74.6	87.9	88.3	70.4	64.5	58.6	44.3	61.8	
	HIGHEST DAILY MAXIMUM	55	66	75	71	82	96	104	99	89	80	81	59	104	
	DATE OF OCCURRENCE	14+	28	25	19	28+	21	28	19+	06	31	12	28	JUL 28	
	MEAN DAILY MINIMUM	14.4	20.5	21.1	29.9	37.6	46.1	51.3	53.4	38.8	31.0	26.1	19.2	32.5	
	LOWEST DAILY MINIMUM	-8	7	0	12	26	38	40	42	26	19	5	5	-8	
	DATE OF OCCURRENCE	24	12	06	04	07	13	01	16	29	17+	02	09	JAN 24	
	AVERAGE DRY BULB	26.0	34.8	37.0	40.8	49.7	60.4	69.6	70.9	54.6	47.8	42.4	31.8	47.2	
	MEAN WET BULB	23.4	29.0	31.0	36.9		53.7	56.9	58.8	45.9	39.1	33.6	27.3		
	MEAN DEW POINT	18.9	20.4	22.8	32.1		48.3	46.9	50.5	38.2	30.4	23.2	19.7		
	NUMBER OF DAYS WITH:														
	MAXIMUM ≥ 90°	0	0	0	0	0	3	14	11	0	0	0	0	0	28
	MAXIMUM ≤ 32°	8	1	2	3	0	0	0	0	0	0	0	1	15	
	MINIMUM ≤ 32°	29	28	30	16	7	0	0	0	6	18	23	31	188	
MINIMUM ≤ 0°	2	0	1	0	0	0	0	0	0	0	0	0	3		
H/C	HEATING DEGREE DAYS	1203	837	859	720	467	154	23	4	304	526	672	1024	6793	
	COOLING DEGREE DAYS	0	0	0	0	0	24	175	191	2	0	0	0	392	
RH	MEAN (PERCENT)	77	60	62	74	71	67	48	52	61	59	55	64	62	
	HOUR 05 LST	81	75	78	86	85	86	71	75	79	73	67	72	77	
	HOUR 11 LST	74	50	49	63	57	53	33	37	41	42	44	53	50	
	HOUR 17 LST	75	47	46	64	57	54	29	35	43	51	50	63	51	
	HOUR 23 LST	80	66	73	81	82	77	59	60	76	67	61	72	71	
S	PERCENT POSSIBLE SUNSHINE														
W/O	NUMBER OF DAYS WITH:														
	HEAVY FOG (VISBY ≤ 1/4 MI)	3	1	4	5	0	0	0	1	0	2	4	3	23	
	THUNDERSTORMS	0	0	0	2	4	14	8	15	3	1	0	0	47	
CLOUDINESS	SUNRISE-SUNSET: (OKTAS)														
	CEILOMETER (≤ 12,000 FT.)														
	SATELLITE (> 12,000 FT.)														
	MIDNIGHT-MIDNIGHT: (OKTAS)														
	CEILOMETER (≤ 12,000 FT.)														
SATELLITE (> 12,000 FT.)															
NUMBER OF DAYS WITH:															
CLEAR															
PARTLY CLOUDY															
CLOUDY															
PR	MEAN STATION PRESS. (IN.)	25.86	25.81	25.85	25.90	25.86	25.88	25.95	25.98	26.00	26.02	25.99	25.99	25.92	
	MEAN SEA-LEVEL PRESS. (IN.)	30.04	29.92	29.95		29.90		29.90		30.04		30.07	30.12		
WINDS	RESULTANT SPEED (MPH)	4.1	6.0	2.7	2.5	4.3	0.9	1.6	2.2	3.3	2.9	1.8	4.3	3.0	
	RES. DIR. (TENS OF DEGS.)	30	29	29	30	30	30	31	28	31	30	29	29	30	
	MEAN SPEED (MPH)	6.9	10.1	7.1	9.8	8.3	5.9	5.4	4.9	4.9	5.6	5.1	7.3	6.8	
	PREVAIL. DIR. (TENS OF DEGS.)	31	30	31	30	30	30	30	30	30	32	34	30	30	
	MAXIMUM 2-MINUTE WIND:														
	SPEED (MPH)	46	44	49	43	40	37	39	33	37	38	39	46	49	
	DIR. (TENS OF DEGS.)	31	30	31	30	30	20	32	24	31	32	30	30	31	
	DATE OF OCCURRENCE	16	10	16	10	08+	02	08	30	26+	31	17	18	MAR 16	
	MAXIMUM 5-SECOND WIND:														
	SPEED (MPH)	53	51	56	52	46	43	47	38	44	45	45	54	56	
DIR. (TENS OF DEGS.)	31	30	30	29	31	20	30	23	32	32	30	31	30		
DATE OF OCCURRENCE	16	10	16	10	05	02	22	30	26	31	17	18	MAR 16		
PRECIPITATION	WATER EQUIVALENT:														
	TOTAL (IN.)	0.50	0.10	0.61	3.51	1.94	1.71	0.02	0.36	2.69	0.72	0.28	0.63	13.07	
	GREATEST 24-HOUR (IN.)	0.17	0.06	0.21	0.70	0.54	0.80	0.02	0.23	1.89	0.29	0.21	0.22	1.89	
	DATE OF OCCURRENCE	06	10-11	31	22	03-04	05-06	31	13	03-04	01	18	16-17	SEP 03-04	
	NUMBER OF DAYS WITH:														
	PRECIPITATION ≥ 0.01	9	5	5	16	14	13	1	4	10	5	2	6	90	
PRECIPITATION ≥ 0.10	1	0	3	12	7	5	0	1	6	3	1	3	42		
PRECIPITATION ≥ 1.00	0	0	0	0	0	0	0	0	2	0	0	0	2		
SNOWFALL	SNOW, ICE PELLETS, HAIL:														
	TOTAL (IN.)		2.2			T	0.0	0.0	0.0	T	1.0	T	7.2		
	GREATEST 24-HOUR (IN.)		1.5			T	0.0	0.0	0.0	T	1.0	T	2.8		
	DATE OF OCCURRENCE		10			10+				27	01	22+	20		
	MAXIMUM SNOW DEPTH (IN.)	3	2	4	10	0	0	0	0	0	1	0	5	10	
	DATE OF OCCURRENCE	09+	10	31+	02						02+		21	APR 02	
NUMBER OF DAYS WITH:															
SNOWFALL ≥ 1.0	3	1			0	0	0	0	0	1	0	4			

# NORMALS, MEANS, AND EXTREMES

## SHERIDAN, WY (SHR)

LATITUDE: 44° 46' 26" N      LONGITUDE: 106° 58' 35" W      ELEVATION (FT): GRND: 3943      BARO: 3943      TIME ZONE: MOUNTAIN (UTC + 7)      WBAN: 24029

		POR	JAN	FEB	MAR	APR	MAY	JUN	JUL	AUG	SEP	OCT	NOV	DEC	YEAR
TEMPERATURE °F	NORMAL DAILY MAXIMUM	30	33.0	38.3	46.2	57.1	66.3	76.9	86.1	85.2	72.8	61.7	45.3	35.0	58.7
	MEAN DAILY MAXIMUM	52	33.0	38.5	45.5	56.5	66.7	76.3	85.9	85.4	73.5	61.7	45.5	36.4	58.7
	HIGHEST DAILY MAXIMUM	59	70	76	77	87	95	105	106	106	103	92	81	72	106
	YEAR OF OCCURRENCE		1974	1982	1994	1946	1960	1988	1989	1983	1983	1992	1999	1981	JUL 1989
	MEAN OF EXTREME MAXS.	52	57.1	59.8	67.8	78.4	85.3	93.2	99.0	97.8	92.9	82.7	69.0	60.3	78.6
	NORMAL DAILY MINIMUM	30	8.5	14.5	21.5	30.4	39.0	47.3	53.0	51.7	41.4	31.7	19.7	10.2	30.7
	MEAN DAILY MINIMUM	52	8.7	14.4	20.9	30.5	39.7	47.7	53.6	52.5	42.3	32.1	20.2	11.9	31.2
	LOWEST DAILY MINIMUM	59	-35	-32	-23	-2	13	27	35	33	6	-9	-25	-37	-37
	YEAR OF OCCURRENCE		1997	1989	1965	1975	1954	1951	1971	1993	1984	1991	1959	1983	DEC 1983
	MEAN OF EXTREME MINS.	52	-16.5	-9.8	-1.5	15.6	27.0	36.2	43.5	41.9	28.0	15.9	-1.3	-12.4	13.9
	NORMAL DRY BULB	30	20.8	26.4	33.9	43.8	52.7	62.1	69.6	68.4	57.1	46.7	32.5	22.6	44.7
	MEAN DRY BULB	52	20.8	26.4	33.3	43.5	53.1	62.1	69.7	68.9	57.9	46.9	32.8	24.2	45.0
	MEAN WET BULB	15	21.0	23.4	30.7	38.1	47.2	54.7	54.7	53.0	45.5	36.4	26.5	19.8	37.6
	MEAN DEW POINT	15	14.1	15.6	22.0	28.1	37.1	44.5	46.3	43.7	36.8	28.8	20.1	13.3	29.2
	NORMAL NO. DAYS WITH:														
MAXIMUM ≥ 90°	30	0.0	0.0	0.0	0.0	0.2	3.1	10.5	11.0	2.4	*	0.0	0.0	27.2	
MAXIMUM ≤ 32°	30	13.2	8.0	4.6	0.7	0.0	0.0	0.0	0.0	*	0.3	5.2	12.7	44.7	
MINIMUM ≤ 32°	30	30.3	26.9	27.7	18.4	5.1	0.2	0.0	0.0	3.5	15.7	27.6	30.1	185.5	
MINIMUM ≤ 0°	30	9.5	4.3	1.6	*	0.0	0.0	0.0	0.0	0.0	0.0	2.0	7.1	24.5	
H/C	NORMAL HEATING DEG. DAYS	30	1370	1081	964	636	381	156	28	63	269	567	975	1314	7804
	NORMAL COOLING DEG. DAYS	30	0	0	0	0	0	69	170	168	32	0	0	0	439
RH	NORMAL (PERCENT)	30	66	66	63	58	60	60	50	47	54	58	66	67	60
	HOUR 05 LST	30	69	72	73	73	76	77	72	68	71	70	73	70	72
	HOUR 11 LST	30	62	60	53	48	48	46	37	34	42	46	57	61	50
	HOUR 17 LST	30	64	60	50	43	46	44	33	30	38	45	61	65	48
	HOUR 23 LST	30	70	71	70	67	70	71	61	56	63	66	71	71	67
S	PERCENT POSSIBLE SUNSHINE	55	57	60	63	60	60	65	75	75	68	62	53	55	63
W/O	MEAN NO. DAYS WITH:														
	HEAVY FOG (VISBY ≤ 1/4 MI)	59	0.8	1.0	0.9	0.5	0.3	0.3	0.1	0.1	0.2	0.5	0.8	0.8	6.3
	THUNDERSTORMS	59	0.0	0.0	0.0	0.8	4.7	9.2	9.6	7.2	2.7	0.4	0.0	0.0	34.6
CLOUDINESS	MEAN:														
	SUNRISE-SUNSET (OKTAS)	53	5.5	5.5	5.6	5.4	5.4	4.6	3.5	3.5	4.0	4.5	5.4	5.3	4.8
	MIDNIGHT-MIDNIGHT (OKTAS)	1	0.0	0.0	0.0	0.0	0.0	0.0	0.0	0.0	0.0	0.0	0.0	0.0	0.0
	MEAN NO. DAYS WITH:														
CLEAR	56	5.8	5.2	4.6	5.3	5.5	7.8	13.1	13.3	11.4	9.7	5.8	6.5	94.0	
PARTLY CLOUDY	56	7.9	7.8	9.5	9.1	10.5	11.7	12.0	10.8	9.0	8.5	8.0	7.9	112.7	
CLOUDY	56	17.3	15.3	16.9	15.7	14.9	10.5	5.5	6.4	9.1	12.3	15.8	16.6	156.3	
PR	MEAN STATION PRESSURE (IN)	10	25.90	25.89	25.84	25.88	25.89	25.91	25.99	25.99	25.99	25.98	25.95	25.91	25.93
	MEAN SEA-LEVEL PRES. (IN)	16	30.12	30.09	30.03	29.96	29.91	29.91	29.95	29.96	30.01	30.05	30.05	30.14	30.01
WINDS	MEAN SPEED (MPH)	30	7.8	8.2	8.9	9.9	9.0	8.1	7.3	7.1	7.3	7.6	7.8	7.8	8.1
	PREVAIL. DIR (TENS OF DEGS)	15	31	31	31	31	31	31	31	31	31	31	31	31	31
	MAXIMUM 2-MINUTE:														
	SPEED (MPH)	3	46	44	49	44	40	43	46	37	43	46	55	47	55
	DIR. (TENS OF DEGS)		31	30	31	30	30	31	26	22	31	31	32	31	32
	YEAR OF OCCURRENCE		1999	1999	1999	1997	1999	1997	1998	1997	1997	1997	1998	1997	NOV 1998
	MAXIMUM 5-SECOND:														
SPEED (MPH)	3	53	51	56	52	46	53	55	44	49	56	62	56	62	
DIR. (TENS OF DEGS)		31	30	30	29	31	23	26	21	31	31	31	31	31	
YEAR OF OCCURRENCE		1999	1999	1999	1999	1999	1998	1998	1997	1997	1997	1998	1997	NOV 1998	
PRECIPITATION	NORMAL (IN)	30	0.73	0.64	0.97	1.72	2.39	2.25	0.88	0.82	1.37	1.18	0.83	0.70	14.48
	MAXIMUM MONTHLY (IN)	59	1.86	2.68	3.26	4.80	6.80	9.54	3.78	3.02	3.08	3.41	2.41	2.41	9.54
	YEAR OF OCCURRENCE		1994	1955	1946	1963	1978	1944	1958	1968	1951	1994	1991	1989	JUN 1944
	MINIMUM MONTHLY (IN)	59	0.07	0.05	0.14	0.18	0.29	0.28	0.02	T	0.06	0.02	0.10	0.10	T
	YEAR OF OCCURRENCE		1983	1992	1978	1980	1998	1971	1999	1970	1964	1965	1981	1986	AUG 1970
	MAXIMUM IN 24 HOURS (IN)	59	1.01	1.10	2.25	3.84	2.04	3.44	2.28	1.71	2.17	1.91	1.10	0.86	3.84
	YEAR OF OCCURRENCE		1972	1955	1946	1948	1956	1944	1948	1943	1998	1974	1991	1980	APR 1948
NORMAL NO. DAYS WITH:															
PRECIPITATION ≥ 0.01	30	9.5	8.4	10.1	10.8	11.4	10.8	7.3	6.2	7.5	7.5	7.6	9.5	106.6	
PRECIPITATION ≥ 1.00	30	0.0	0.0	0.0	0.2	0.3	0.4	0.0	*	0.1	0.1	0.0	0.0	1.1	
SNOWFALL	NORMAL (IN)	30	11.7	10.1	12.2	9.6	2.4	0.1	0.0	0.0	2.1	4.4	9.5	12.2	74.3
	MAXIMUM MONTHLY (IN)	57	32.8	35.0	36.8	39.6	12.5	4.0	T	0.0	21.0	17.5	25.8	43.5	43.5
	YEAR OF OCCURRENCE		1994	1955	1954	1955	1979	1969	1995		1984	1989	1964	1989	DEC 1989
	MAXIMUM IN 24 HOURS (IN)	57	13.5	11.2	13.3	26.7	10.9	4.0	T	0.0	12.9	14.0	12.0	13.3	26.7
	YEAR OF OCCURRENCE		1972	1990	1946	1955	1979	1969	1995		1984	1989	1942	1989	APR 1955
	MAXIMUM SNOW DEPTH (IN)	50	19	20	17	33	14	4	0	0	12	12	12	23	33
	YEAR OF OCCURRENCE		1972	1978	1978	1955	1967	1969			1984	1989	1978	1989	APR 1955
NORMAL NO. DAYS WITH:															
SNOWFALL ≥ 1.0	30	3.9	3.5	4.3	3.0	0.7	0.*	0.0	0.0	0.6	1.1	3.0	4.0	24.1	

PRECIPITATION (inches) 1999 SHERIDAN, WY (SHR)

YEAR	JAN	FEB	MAR	APR	MAY	JUN	JUL	AUG	SEP	OCT	NOV	DEC	ANNUAL
1970	0.72	0.71	2.31	1.67	5.20	2.10	1.06	T	1.87	0.94	1.43	0.62	18.63
1971	1.43	1.17	0.62	3.83	2.45	0.28	0.21	0.52	0.90	3.16	0.71	0.52	15.80
1972	1.79	0.66	0.97	1.02	1.35	1.96	1.62	0.96	0.94	1.01	0.32	0.90	13.50
1973	0.35	0.39	1.41	4.05	0.51	2.21	0.64	0.47	2.79	0.81	0.70	0.80	15.13
1974	0.67	0.46	0.96	1.58	1.44	0.48	0.65	0.70	1.48	2.96	0.64	0.24	12.26
1975	1.11	0.47	1.18	1.67	3.51	4.56	0.88	0.19	0.19	1.50	0.88	1.15	17.29
1976	0.51	0.66	0.44	2.24	1.11	2.32	0.73	0.80	1.62	1.05	0.93	0.26	12.67
1977	1.45	0.08	1.84	1.16	3.03	2.09	1.66	1.95	0.93	1.27	0.66	1.36	17.48
1978	1.29	0.84	0.14	2.26	6.80	0.46	1.73	1.50	1.67	0.27	1.45	0.95	19.36
1979	0.48	0.38	0.60	1.31	2.95	1.13	0.84	1.10	0.39	2.28	0.56	0.23	12.25
1980	0.60	0.86	1.25	0.18	3.65	1.11	0.33	1.12	1.31	0.88	1.27	0.72	13.28
1981	0.30	0.36	0.57	0.24	5.71	1.94	3.00	0.67	0.63	1.00	0.10	0.51	15.03
1982	0.70	0.25	1.33	0.93	1.46	3.87	0.51	0.58	2.90	0.65	0.26	1.12	14.56
1983	0.07	0.33	0.48	0.88	1.84	1.01	0.12	1.23	0.94	1.25	1.06	0.76	9.97
1984	0.69	0.46	2.11	2.22	1.55	2.34	0.40	0.96	2.28	0.28	0.57	0.35	14.21
1985	0.81	0.28	0.54	0.98	1.55	1.73	0.93	0.44	2.36	0.57	0.70	0.40	11.29
1986	0.26	1.52	1.08	0.88	1.78	3.21	0.63	1.02	2.43	1.21	1.94	0.10	16.06
1987	0.45	0.81	1.45	0.22	2.76	1.23	3.01	1.15	1.49	0.54	1.17	0.29	14.57
1988	0.67	0.78	0.64	2.09	2.43	0.55	0.07	0.26	0.97	1.27	0.60	0.63	10.96
1989	0.36	0.48	1.61	2.26	1.69	1.62	0.54	0.27	0.84	2.70	0.61	2.41	15.39
1990	0.46	0.89	1.01	2.27	1.92	2.00	1.11	0.46	0.24	1.80	0.87	0.41	13.44
1991	0.85	0.61	1.09	3.69	2.67	1.02	0.29	0.45	1.50	0.83	2.41	0.57	15.98
1992	0.21	0.05	0.96	1.43	2.02	3.56	2.42	0.63	0.45	0.90	1.35	1.26	15.24
1993	0.55	0.32	0.78	2.52	2.37	3.61	3.31	0.43	0.58	1.93	0.45	0.49	17.34
1994	1.86	1.09	1.18	1.73	0.65	1.70	1.62	0.43	0.83	3.41	0.70	0.20	15.40
1995	0.97	1.06	0.86	2.19	3.05	3.78	0.70	0.09	2.08	1.66	0.77	0.29	17.50
1996	0.65	0.21	1.91	0.88	3.69	1.32	0.27	0.79	0.78	1.11	0.84	0.73	13.18
1997	0.47	0.49	0.29	1.40	2.72	2.35	3.11	1.67	0.95	1.49	0.16	0.78	15.88
1998	0.41	0.08	1.15	2.01	0.29	3.67	1.10	2.47	2.67	2.69	0.84	0.19	17.57
1999	0.50	0.10	0.61	3.51	1.94	1.71	0.02	0.36	2.69	0.72	0.28	0.63	13.07
POR= 93 YRS	0.75	0.64	1.14	1.99	2.52	2.32	1.10	0.82	1.31	1.21	0.78	0.60	15.18

WBAN : 24029

AVERAGE TEMPERATURE (°F) 1999 SHERIDAN, WY (SHR)

YEAR	JAN	FEB	MAR	APR	MAY	JUN	JUL	AUG	SEP	OCT	NOV	DEC	ANNUAL
1970	19.2	31.1	28.1	38.4	53.6	62.1	68.8	70.4	53.9	42.8	33.2	21.4	43.6
1971	19.5	24.8	33.5	43.7	53.2	62.8	66.0	73.6	54.5	42.8	32.8	16.3	43.6
1972	14.0	27.4	40.2	44.5	54.1	64.8	64.1	68.5	55.1	44.4	33.4	16.5	43.9
1973	20.3	28.7	35.3	39.3	52.3	62.9	68.2	70.1	55.0	47.8	29.2	27.1	44.7
1974	19.7	33.1	35.7	45.8	49.9	65.5	72.8	63.0	54.6	48.2	34.3	26.7	45.8
1975	22.2	16.0	28.7	36.5	50.3	58.5	71.0	66.0	56.8	46.3	31.3	28.7	42.7
1976	23.5	32.0	31.3	45.2	54.3	60.3	71.5	67.9	59.6	42.3	33.2	27.6	45.7
1977	15.7	31.7	32.8	47.2	54.9	65.4	70.0	64.0	57.5	47.7	31.5	18.1	44.7
1978	11.4	17.5	34.2	46.7	49.9	60.6	66.7	65.4	59.2	47.8	23.6	12.5	41.3
1979	3.4	15.8	33.3	40.5	50.4	60.9	68.1	68.0	62.4	48.8	29.7	31.1	42.7
1980	15.8	24.5	30.5	47.9	55.0	62.1	71.3	65.6	58.8	46.8	36.9	28.0	45.3
1981	32.4	28.5	39.4	47.8	52.0	61.3	70.9	70.1	62.7	45.7	41.3	26.1	48.2
1982	16.4	26.0	34.8	42.0	50.7	59.6	69.8	73.5	58.1	46.9	32.1	22.8	44.4
1983	33.7	36.4	39.4	42.2	51.1	63.4	72.8	77.8	59.6	51.3	34.4	6.8	47.4
1984	25.0	32.5	37.1	43.2	52.8	61.3	71.0	72.8	53.5	41.2	33.1	14.1	44.8
1985	15.3	16.7	32.1	47.7	58.2	62.5	72.2	66.2	52.6	45.2	15.5	25.6	42.5
1986	32.7	22.9	43.8	44.8	52.5	66.9	68.1	69.9	53.5	48.0	29.2	29.0	46.8
1987	26.8	33.7	35.9	51.2	58.3	64.3	68.2	64.8	58.9	47.1	37.4	26.6	47.8
1988	21.6	26.4	36.7	46.6	56.5	74.2	74.5	70.3	58.0	51.0	34.0	28.6	48.2
1989	25.9	14.3	29.5	44.3	53.3	61.5	73.7	68.3	58.9	45.5	36.7	21.0	44.4
1990	29.5	26.6	36.2	43.7	51.1	60.7	69.2	69.9	64.3	45.9	37.9	15.8	45.9
1991	19.3	35.8	37.2	42.0	53.0	62.9	71.4	73.1	59.7	44.5	29.6	28.5	46.4
1992	30.8	37.7	42.8	48.3	56.0	63.5	63.9	65.2	58.8	48.8	32.7	15.2	47.0
1993	15.4	17.7	37.6	44.8	56.7	58.5	61.7	64.4	55.1	45.4	29.0	30.4	43.1
1994	25.1	19.3	38.6	44.9	58.7	64.7	70.0	71.5	62.4	45.7	31.0	29.0	46.7
1995	27.1	31.6	33.4	41.0	48.9	59.3	68.0	71.1	58.3	43.9	35.2	26.8	45.4
1996	16.4	28.1	27.6	45.6	49.0	64.8	71.0	71.5	58.3	45.2	25.1	17.9	43.4
1997	16.8	26.6	35.4	36.8	52.7	62.3	66.4	66.3	59.8	45.3	32.4	23.6	43.7
1998	20.7	30.6	31.0	44.3	54.1	55.1	72.4	69.5	64.0	45.8	35.1	24.2	45.6
1999	26.0	34.8	37.0	40.8	49.7	60.4	69.6	70.9	54.6	47.8	42.4	31.8	47.2
POR= 92 YRS	20.7	25.0	32.9	43.7	53.1	61.9	69.8	68.2	57.6	46.4	32.9	23.7	44.7

HEATING DEGREE DAYS (base 65°F) 1999 SHERIDAN, WY (SHR)

YEAR	JUL	AUG	SEP	OCT	NOV	DEC	JAN	FEB	MAR	APR	MAY	JUN	TOTAL
1970-71	10	4	342	686	948	1347	1407	1122	968	631	358	107	7930
1971-72	59	5	328	683	963	1501	1577	1082	761	607	339	56	7961
1972-73	95	28	303	633	942	1502	1380	1010	915	766	387	130	8091
1973-74	23	4	299	523	1070	1169	1400	887	902	572	462	95	7406
1974-75	3	93	309	513	918	1178	1317	1370	1117	852	450	194	8314
1975-76	1	43	246	575	1003	1122	1282	949	1040	587	328	161	7337
1976-77	1	20	186	696	949	1154	1520	926	989	527	307	53	7328
1977-78	12	73	233	528	1001	1452	1654	1323	951	543	463	153	8386
1978-79	45	75	232	525	1235	1623	1911	1376	979	727	447	154	9329
1979-80	6	20	120	497	1051	1044	1523	1171	1061	507	312	111	7423
1980-81	0	50	195	557	836	1140	1004	1018	788	510	396	136	6630
1981-82	15	6	115	593	703	1200	1503	1087	932	685	436	186	7461
1982-83	26	2	257	556	983	1304	962	794	788	677	431	89	6869
1983-84	22	0	215	419	908	1802	1236	935	856	647	380	147	7567
1984-85	7	3	374	731	953	1574	1535	1351	1016	512	215	116	8387
1985-86	5	62	373	605	1483	1215	996	1175	650	598	390	41	7593
1986-87	15	2	338	521	1069	1109	1177	871	896	413	218	76	6705
1987-88	46	76	197	549	824	1183	1341	1114	870	545	271	23	7039
1988-89	3	20	221	424	925	1122	1204	1415	1094	618	359	142	7547
1989-90	0	25	205	598	841	1358	1096	1070	885	632	425	183	7318
1990-91	17	1	109	585	804	1526	1407	811	858	682	367	83	7250
1991-92	4	0	201	638	1056	1120	1052	785	682	496	290	86	6410
1992-93	78	103	199	510	963	1538	1533	1317	844	599	253	206	8143
1993-94	126	72	298	603	1073	1068	1230	1272	808	595	193	97	7435
1994-95	14	22	100	594	1012	1110	1168	928	976	715	488	189	7316
1995-96	26	16	244	650	888	1176	1501	1067	1151	576	489	61	7845
1996-97	4	15	225	607	1192	1454	1488	1067	913	841	379	82	8267
1997-98	54	47	176	604	972	1278	1366	958	1047	613	332	289	7736
1998-99	1	3	143	590	887	1260	1203	837	859	720	467	154	7124
1999-	23	4	304	526	672	1024							

WBAN : 24029

COOLING DEGREE DAYS (base 65°F) 1999 SHERIDAN, WY (SHR)

YEAR	JAN	FEB	MAR	APR	MAY	JUN	JUL	AUG	SEP	OCT	NOV	DEC	ANNUAL
1970	0	0	0	0	1	55	134	176	16	2	0	0	384
1971	0	0	0	0	0	49	96	276	21	0	0	0	442
1972	0	0	0	0	9	55	74	145	11	0	0	0	294
1973	0	0	0	0	1	73	129	168	5	0	0	0	376
1974	0	0	0	0	0	119	248	39	4	0	0	0	410
1975	0	0	0	0	0	6	194	83	10	0	0	0	293
1976	0	0	0	0	0	28	211	115	28	0	0	0	382
1977	0	0	0	0	3	73	176	48	16	0	0	0	316
1978	0	0	0	0	1	30	103	94	62	0	0	0	290
1979	0	0	0	0	1	42	108	121	46	0	0	0	318
1980	0	0	0	2	9	33	202	75	14	3	0	0	338
1981	0	0	0	0	0	31	207	173	56	0	0	0	467
1982	0	0	0	0	0	31	185	273	53	0	0	0	542
1983	0	0	0	0	6	47	272	402	57	0	0	0	784
1984	0	0	0	0	7	45	199	253	38	0	0	0	542
1985	0	0	0	0	13	47	238	104	10	0	0	0	412
1986	0	0	0	0	8	105	116	156	0	0	0	0	385
1987	0	0	0	6	19	62	150	76	24	2	0	0	339
1988	0	0	0	0	17	304	305	192	19	0	0	0	837
1989	0	0	0	6	0	44	276	132	27	0	0	0	485
1990	0	0	0	0	0	64	154	159	93	0	0	0	470
1991	0	0	0	0	1	28	208	257	49	9	0	0	552
1992	0	0	0	1	17	49	51	113	21	13	0	0	265
1993	0	0	0	0	1	16	32	64	8	0	0	0	121
1994	0	0	0	0	4	97	175	230	29	0	0	0	535
1995	0	0	0	0	0	26	126	212	49	2	0	0	415
1996	0	0	0	0	0	61	197	224	30	2	0	0	514
1997	0	0	0	0	3	8	103	97	28	0	0	0	239
1998	0	0	0	0	1	1	236	150	119	0	0	0	507
1999	0	0	0	0	0	24	175	191	2	0	0	0	392

SNOWFALL (inches) 1999 SHERIDAN, WY (SHR)

YEAR	JUL	AUG	SEP	OCT	NOV	DEC	JAN	FEB	MAR	APR	MAY	JUN	TOTAL
1970-71	0.0	0.0	9.5	0.9	11.3	10.0	15.6	15.7	7.5	5.2	T	0.0	75.7
1971-72	0.0	0.0	T	14.8	9.3	9.2	25.1	9.4	9.1	7.8	T	0.0	84.7
1972-73	0.0	0.0	3.6	2.6	1.4	15.6	7.8	8.2	16.1	37.5	1.4	0.0	94.2
1973-74	0.0	0.0	3.2	4.9	11.7	10.7	10.0	6.8	9.8	7.7	0.4	0.0	65.2
1974-75	0.0	0.0	0.3	2.0	4.4	4.7	13.8	10.1	17.6	14.5	4.8	0.0	72.2
1975-76	0.0	0.0	0.0	8.5	14.1	18.0	8.5	12.9	8.1	8.7	0.0	0.0	78.8
1976-77	0.0	0.0	0.0	3.5	11.9	5.4	26.3	2.2	25.0	10.2	0.0	0.0	84.5
1977-78	0.0	0.0	0.0	8.4	9.1	24.0	23.2	15.5	1.5	0.7	5.2	0.0	87.6
1978-79	0.0	0.0	0.0	T	18.5	18.3	10.7	6.9	7.6	11.0	12.5	0.0	85.5
1979-80	0.0	0.0	0.0	10.1	8.9	4.2	12.1	18.2	19.3	3.0	0.0	0.0	75.8
1980-81	0.0	0.0	0.4	4.5	14.0	11.1	6.2	5.5	4.8	0.2	T	0.0	46.7
1981-82	0.0	0.0	0.0	5.6	1.0	8.2	12.8	5.2	18.8	7.3	T	0.0	58.9
1982-83	0.0	0.0	6.9	3.4	5.5	19.6	1.5	4.1	5.7	10.7	8.8	0.0	66.2
1983-84	0.0	0.0	3.3	0.0	12.3	17.6	12.4	7.7	20.5	25.6	5.4	0.0	104.8
1984-85	0.0	0.0	21.0	2.5	8.3	7.7	16.3	5.6	7.8	8.2	0.0	0.0	77.4
1985-86	0.0	0.0	5.2	1.8	13.7	6.3	2.9	23.5	11.3	3.5	5.5	0.0	73.7
1986-87	0.0	0.0	0.0	2.0	20.4	2.1	9.2	12.7	19.4	1.4	4.1	0.0	71.3
1987-88	0.0	0.0	0.0	4.2	3.4	6.0	11.6	12.1	10.4	16.1	0.8	0.0	64.6
1988-89	0.0	0.0	0.1	1.0	7.3	12.1	6.7	11.5	23.5	15.4	0.0	T	77.6
1989-90	0.0	0.0	T	17.5	7.7	43.5	6.0	16.4	12.8	10.7	2.2	T	116.8
1990-91	0.0	0.0	0.0	9.5	9.1	9.3	16.0	5.3	12.7	31.2	1.8	0.0	94.9
1991-92	0.0	0.0	0.0	10.0	22.1	7.2	3.1	0.4	5.8	1.3	0.3	T	50.2
1992-93	T	0.0	0.0	8.2	12.9	21.2	6.3	5.2	9.2	9.0	T	T	72.0
1993-94	T	0.0	T	14.7	7.5	6.3	32.8	17.8	12.9	13.9	0.0	T	105.9
1994-95	0.0	0.0	0.0	T	6.7	2.7	7.0	13.3	2.6	4.6	3.1	0.0	40.0
1995-96	T	0.0	3.2	10.1	6.8	4.0	9.0	3.3	18.7	1.6	T	T	56.7
1996-97	0.0	0.0	0.5	9.6	14.1	19.5		4.1	5.7	20.0	T		
1997-98				5.4	1.9	20.6	21.8	7.2	14.0	3.1	0.1	0.3	
1998-99						5.1		2.2			T	0.0	
1999-	0.0	0.0	T	1.0	T	7.2							
POR= 56 YRS	T	0.0	1.3	4.4	8.9	10.6	10.8	10.0	12.4	9.9	2.1	0.1	70.5

WBAN : 24029

REFERENCE NOTES:

<p>PAGE 1: THE TEMPERATURE GRAPH SHOWS NORMAL MAXIMUM AND NORMAL MINIMUM DAILY TEMPERATURES (SOLID CURVES) AND THE ACTUAL DAILY HIGH AND LOW TEMPERATURES (VERTICAL BARS).</p> <p>PAGE 2 AND 3: H/C INDICATES HEATING AND COOLING DEGREE DAYS. RH INDICATES RELATIVE HUMIDITY W/O INDICATES WEATHER AND OBSTRUCTIONS S INDICATES SUNSHINE. PR INDICATES PRESSURE. CLOUDINESS ON PAGE 3 IS THE SUM OF THE CEILOMETER AND SATELLITE DATA NOT TO EXCEED EIGHT EIGHTHS(OKTAS).</p> <p>GENERAL: T INDICATES TRACE PRECIPITATION, AN AMOUNT GREATER THAN ZERO BUT LESS THAN THE LOWEST REPORTABLE VALUE. + INDICATES THE VALUE ALSO OCCURS ON EARLIER DATES. BLANK ENTRIES DENOTE MISSING OR UNREPORTED DATA. NORMALS ARE 30-YEAR AVERAGES (1961 - 1990). ASOS INDICATES AUTOMATED SURFACE OBSERVING SYSTEM. PM INDICATES THE LAST DAY OF THE PREVIOUS MONTH. POR (PERIOD OF RECORD) BEGINS WITH THE JANUARY DATA MONTH AND IS THE NUMBER OF YEARS USED TO COMPUTE THE MEAN. INDIVIDUAL MONTHS WITHIN THE POR MAY BE MISSING. WHEN THE POR FOR A NORMAL IS LESS THAN 30 YEARS, THE NORMAL IS PROVISIONAL AND IS BASED ON THE NUMBER OF YEARS INDICATED. 0.* OR * INDICATES THE VALUE OR MEAN-DAYS-WITH IS BETWEEN 0.00 AND 0.05. CLOUDINESS FOR ASOS STATIONS DIFFERS FROM THE NON-ASOS OBSERVATION TAKEN BY A HUMAN OBSERVER. ASOS STATION CLOUDINESS IS BASED ON TIME-AVERAGED CEILOMETER DATA FOR CLOUDS AT OR BELOW 12,000 FEET AND ON SATELLITE DATA FOR CLOUDS ABOVE 12,000 FEET. THE NUMBER OF DAYS WITH CLEAR, PARTLY CLOUDY, AND CLOUDY CONDITIONS FOR ASOS STATIONS IS THE SUM OF THE CEILOMETER AND SATELLITE DATA FOR THE SUNRISE TO SUNSET PERIOD.</p>	<p>GENERAL CONTINUED: CLEAR INDICATES 0 - 2 OKTAS, PARTLY CLOUDY INDICATES 3 - 6 OKTAS, AND CLOUDY INDICATES 7 OR 8 OKTAS. WHEN AT LEAST ONE OF THE ELEMENTS (CEILOMETER OR SATELLITE) IS MISSING, THE DAILY CLOUDINESS IS NOT COMPUTED. WIND DIRECTION IS RECORDED IN TENS OF DEGREES (2 DIGITS) CLOCKWISE FROM TRUE NORTH. "00" INDICATES CALM. "36" INDICATES TRUE NORTH. RESULTANT WIND IS THE VECTOR AVERAGE OF THE SPEED AND DIRECTION. AVERAGE TEMPERATURE IS THE SUM OF THE MEAN DAILY MAXIMUM AND MINIMUM TEMPERATURE DIVIDED BY 2. SNOWFALL DATA COMPRISE ALL FORMS OF FROZEN PRECIPITATION, INCLUDING HAIL. A HEATING (COOLING) DEGREE DAY IS THE DIFFERENCE BETWEEN THE AVERAGE DAILY TEMPERATURE AND 65° F. DRY BULB IS THE TEMPERATURE OF THE AMBIENT AIR. DEW POINT IS THE TEMPERATURE TO WHICH THE AIR MUST BE COOLED TO ACHIEVE 100 PERCENT RELATIVE HUMIDITY. WET BULB IS THE TEMPERATURE THE AIR WOULD HAVE IF THE MOISTURE CONTENT WAS INCREASED TO 100 PERCENT RELATIVE HUMIDITY.</p> <p>ON JULY 1, 1996, THE NATIONAL WEATHER SERVICE BEGAN USING THE "METAR" OBSERVATION CODE THAT WAS ALREADY EMPLOYED BY MOST OTHER NATIONS OF THE WORLD. THE MOST NOTICEABLE DIFFERENCE IN THIS ANNUAL PUBLICATION WILL BE THE CHANGE IN UNITS FROM TENTHS TO EIGHTHS(OKTAS) FOR REPORTING THE AMOUNT OF SKY COVER.</p>
---	---

1999  
SHERIDAN,  
WYOMING (SHR)

Sheridan is located east of the Rocky Mountains at an elevation of a little less than 4,000 feet. To the northwest, east, and southeast are rolling hills, but to the southwest and west the Bighorn Mountains rise abruptly, oriented generally northwest-southeast. The foothills are only about 15 miles from Sheridan, and within 30 miles to the southwest the average elevation is near 10,000 feet, with Cloud Peak rising to 13,175 feet. This mountain range has a marked effect on the climate at Sheridan.

During the winter months, a few days after the outbreak of cold arctic air from Canada, the winds generally shift to the west or southwest and increase in velocity. These downslope winds produce a pronounced warming or Chinook. At other times, a gentle downslope flow will persist for several days and result in a prolonged period of mild weather. The Chinook is very effective in moderating the weather of the winter season, which otherwise would be more severe. On the other hand, winds from the east or northeast blowing toward the mountains are upslope and usually cause cooling, persistent low clouds, and often heavy precipitation. The upslope precipitation occurs at times all through the year, but most frequently during the winter and spring. Sheridan will often receive much heavier snow or rain with an easterly wind condition than the surrounding country farther away from the mountains. In the summer, the mountains act as a breeding ground for thunderstorms that frequently move away from the mountains toward the northeast and give afternoon or evening showers to Sheridan. Because of the close proximity to the Bighorn Mountains, the annual precipitation at Sheridan is greater, on the average, than in the neighboring area to the east and north.

Based on the 1951-1980 period, the average first occurrence of 32 degrees Fahrenheit in the fall is September 20 and the average last occurrence in the spring is May 20. Because of the short growing season and cold periods during winter, only the most hardy fruits can be grown successfully, but most varieties of vegetables will reach maturity.

The climate of Sheridan can be described generally as semi-arid with long cold winters and short hot summers. However, during all of the winter months, more than 50 percent of the possible sunshine is received, while the hot days in the summer are marked by very low humidity and nights are cool. There are few summer nights when the temperature remains above 60 degrees. During July, the warmest month, even though temperatures of 90 degrees or above occur frequently, the nights are cool. January is usually the coldest month. The cold weather comes from outbreaks of Canadian air moving southeastward down the east side of the Rockies, and the initial onslaught of arctic air is usually accompanied by strong northerly winds with drifting snow. The coldest nights, however, come after the skies have cleared and the wind becomes very light.

The yearly precipitation pattern for Sheridan is heavy in the spring and early summer. The three winter months constitute the period with the least moisture. Amounts of snowfall are quite generous during the winter, but the water content of the snow is usually low. This dry snow is ordinarily not injurious to livestock and does not result in serious inconvenience or discomfort to the public. During the spring months of March and April, however, precipitation often begins as rain, gradually turning to rain and snow mixed or to heavy wet snow. These snowstorms are frequently accompanied by strong winds and drifting. As a result, these two months are considered to have the most disagreeable weather of the year and are most likely to cause livestock loss. March has more snow than any other month.

# STATION LOCATION

SHERIDAN, WYOMING

LOCATION	OCCUPIED FROM	OCCUPIED TO	AIRLINE DISTANCES AND DIRECTIONS FROM PREVIOUS LOCATION	LATITUDE NORTH	LONGITUDE WEST	ELEVATION ABOVE										AUGUST 1963	* Type	REMARKS	
						SEA LEVEL	GROUND												H
							WIND	W	E	S	T	R	8	H	W				
<u>COOPERATIVE</u>																			
On Farm 1 mile south of Weather Bureau Building	Jan.1893	Jan.1912		44° 48'	106°57'														
<u>CITY</u>																			
2nd Floor Sheridan County Court House Main and Burkitt	4/29/07	11/30/07	1 mi. N	44° 48'	106°57'				5	5			5						
Weather Bureau Building 405 South Main Street	12/1/07	4/19/40	2 blocks S	44° 48'	106°57'	3773	47	10	10				3						
<u>AIRPORT</u>																			
Sheridan County Airport	4/19/40	10/1/42	2 mi. SW	44° 46'	106°58'	3949	38	5	5				3	4	3				
Sheridan County Airport	10/1/42	6/10/58	1000 ft. E	44° 46'	106°58'	3942	38	5	5				3	5	3				
Administration Building Sheridan County Airport	6/10/58	12/01/96	400 ft. NNW	44° 46'	106°58'	c3964	a20	6	6	%10			4	5	3	b5	NA		
Sheridan County Airport	12/01/96	Present	NA	44°47'	106°59'	3943											S		

SUBSCRIPTION: Price and ordering information available through: National Climatic Data Center, Federal Building, Asheville, North Carolina 28801. **INQUIRIES/COMMENTS CALL: (828) 271-4800**

National Climatic Data Center  
151 Patton Avenue, Rm 120  
Asheville NC 28801-5001

OFFICIAL BUSINESS  
PENALTY FOR PRIVATE USE \$300  
FORWARD AND ADDRESS CORRECTION

FIRST CLASS  
POSTAGE & FEES PAID  
United States Department of Commerce  
NOAA Permit No. G - 19