

1999

LOCAL CLIMATOLOGICAL DATA
ANNUAL SUMMARY WITH COMPARATIVE DATA



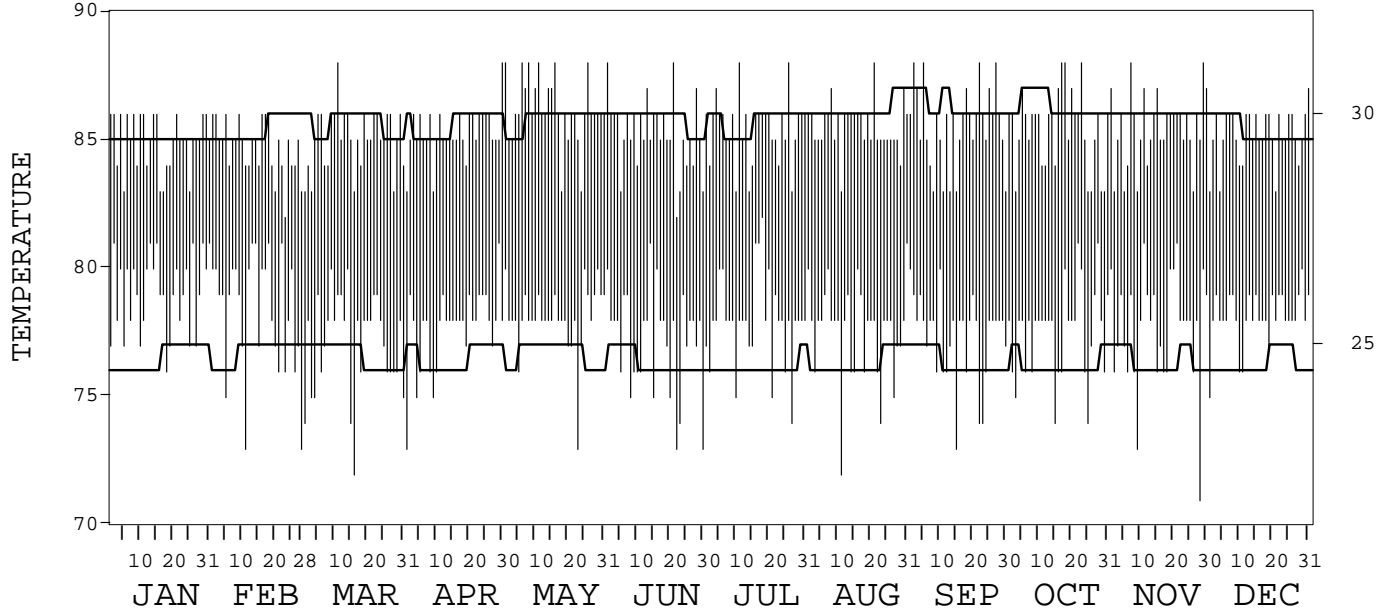
ISSN 0198-4330

MAJURO, MARSHALL ISLANDS,
PACIFIC (PKMJ)

Daily Data

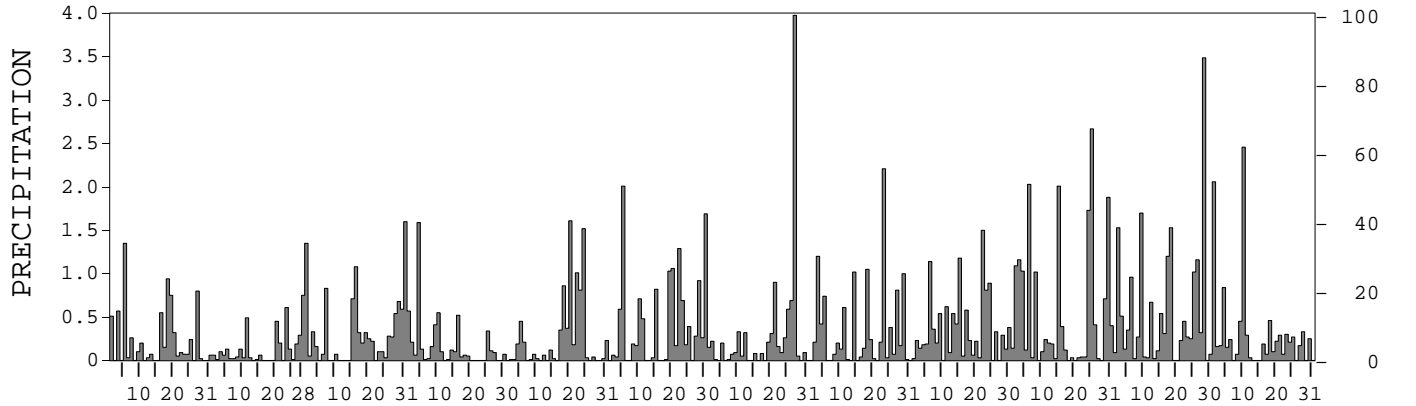
Fahrenheit

Celsius



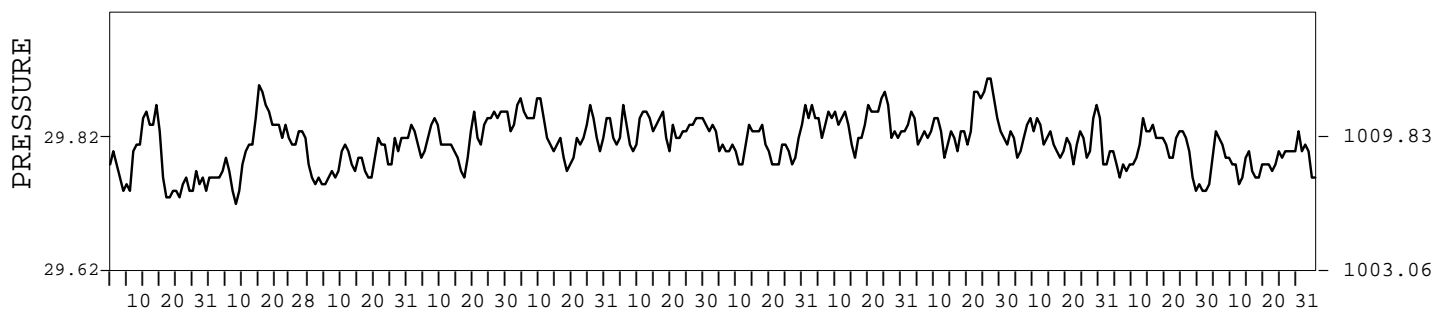
Inches

Millimeters



Inches of Mercury

Hectopascals



I CERTIFY THAT THIS IS AN OFFICIAL PUBLICATION OF THE NATIONAL OCEANIC AND ATMOSPHERIC ADMINISTRATION,
AND IS COMPILED FROM RECORDS ON FILE AT THE NATIONAL CLIMATIC DATA CENTER.

Thomas R. Karl

NATIONAL OCEANIC AND ATMOSPHERIC ADMINISTRATION
 NATIONAL ENVIRONMENTAL AND INFORMATION SERVICE
 NATIONAL ENVIRONMENTAL AND INFORMATION SERVICE
 NATIONAL CLIMATIC DATA CENTER
 NATIONAL CLIMATIC DATA CENTER
 DIRECTOR NATIONAL CLIMATIC DATA CENTER
 ASHEVILLE, NORTH CAROLINA

METEOROLOGICAL DATA FOR 1999

MAJURO, PC (PKMJ)

LATITUDE: 7° 05' 0" N LONGITUDE: 171° 23' 0" E ELEVATION (FT): GRND: 10 BARO: 8 TIME ZONE: 180 E MER (UTC - 12) WBAN: 40710

	ELEMENT	JAN	FEB	MAR	APR	MAY	JUN	JUL	AUG	SEP	OCT	NOV	DEC	YEAR
TEMPERATURE ° F	MEAN DAILY MAXIMUM	85.0	84.7	85.1	85.3	86.2	85.2	85.5	85.5	85.6	85.5	85.5	85.2	85.4
	HIGHEST DAILY MAXIMUM	86	86	88	88	88	88	88	88	88	88	88	88	87
	DATE OF OCCURRENCE	30+	18+	11	30	26+	21+	26+	21	27+	23+	29+	31	NOV 29+
	MEAN DAILY MINIMUM	79.0	78.3	77.1	77.7	78.1	77.2	78.0	77.6	77.4	77.5	77.7	78.1	77.8
	LOWEST DAILY MINIMUM	76	73	72	73	73	73	74	72	73	74	71	75	71
	DATE OF OCCURRENCE	18	28+	16	01	23	30+	27	11	15	25+	28	01	NOV 28
	AVERAGE DRY BULB	82.0	81.5	81.1	81.5	82.2	81.2	81.8	81.6	81.5	81.5	81.6	81.7	81.6
	MEAN WET BULB	76.8	76.3	76.5	76.9	77.1	77.1	76.9	76.7	76.6	76.9	76.9	76.9	76.8
	MEAN DEW POINT	74.6	73.9	74.3	74.7	75.0	75.2	74.8	74.3	74.5	74.9	74.9	74.7	74.7
	NUMBER OF DAYS WITH:													
MAXIMUM ≥ 90°	0	0	0	0	0	0	0	0	0	0	0	0	0	0
MAXIMUM ≤ 32°	0	0	0	0	0	0	0	0	0	0	0	0	0	0
MINIMUM ≤ 32°	0	0	0	0	0	0	0	0	0	0	0	0	0	0
MINIMUM ≤ 0°	0	0	0	0	0	0	0	0	0	0	0	0	0	0
H/C	HEATING DEGREE DAYS	0	0	0	0	0	0	0	0	0	0	0	0	0
	COOLING DEGREE DAYS	532	468	506	502	538	492	524	523	499	518	504	526	6132
RH	MEAN (PERCENT)	79	77	79	79	78	80	79	79	80	80	80	79	79
	HOUR 06 LST	80	79	81	81	81	83	81	81	82	82	83	82	81
	HOUR 12 LST	76	73	75	77	73	78	75	75	77	76	78	76	76
	HOUR 18 LST	78	76	80	78	79	80	78	77	79	80	80	79	79
	HOUR 24 LST	79	78	81	80	80	82	81	81	83	81	82	82	81
S	PERCENT POSSIBLE SUNSHINE	57	65	64	72	70	63	70	73	58	47	52	69	63
W/O	NUMBER OF DAYS WITH:													
	HEAVY FOG (VISBY ≤ 1/4 MI)	0	0	0	0	0	0	0	0	0	0	0	0	0
	THUNDERSTORMS	0	0	0	0	1	2	0	1	1	3	2	0	10
CLOUDINESS	AVG. SKY COVER (OKTAS)													
	SUNRISE - SUNSET	6	6	7	7	6	7	7	7	7	7	8	7	7
	MIDNIGHT - MIDNIGHT	6	6	7	7	6	6	7	7	7	7	7	7	7
	NUMBER OF DAYS WITH:													
	CLEAR	0	2	0	0	0	0	0	0	0	0	0	0	2
PARTLY CLOUDY	14	10	14	12	22	11	9	6	4	9	5	10	126	
CLOUDY	17	16	17	18	9	19	22	25	26	22	25	21	237	
PR	MEAN STATION PRESS. (IN.)	29.78	29.81	29.78	29.82	29.83	29.84	29.81	29.84	29.84	29.82	29.79	29.79	29.81
	MEAN SEA-LEVEL PRESS. (IN.)	29.79	29.82	29.80	29.84	29.85	29.85	29.83	29.86	29.86	29.83	29.81	29.80	29.83
WINDS	RESULTANT SPEED (MPH)	3.7	3.5	2.2	2.8	2.0	2.2	1.6	0.4	0.5	2.2	2.9	1.8	1.3
	RES. DIR. (TENS OF DEGS.)	11	11	10	22	14	07	31	21	30	08	07	09	10
	MEAN SPEED (MPH)	13.7	13.9	13.9	14.2	11.4	9.7	10.0	7.1	5.9	8.2	8.0	11.4	10.6
	PREVAIL. DIR. (TENS OF DEGS.)	07	07	07	07	07	07	08	07	07	08	08	06	07
	MAXIMUM 2-MINUTE WIND:													
	SPEED (MPH)	23	23	23	23	21	21	20	17	17	23	18	24	24
	DIR. (TENS OF DEGS.)	07	08	10	08	07	08	07	07	09	08	08	08	08
	DATE OF OCCURRENCE	27+	11	01	14	25+	09	24+	09+	30+	30	25	25+	DEC 25+
	PEAK GUST :													
	SPEED (MPH)	31	31	35	35	25	35	37	23	30	43	33	33	43
DIR. (TENS OF DEGS.)	E	E	E	E	E	E	E	NE	E	E	E	E	E	
DATE OF OCCURRENCE	16	11	01	04	23+	15	23	05+	18	30	25	04	OCT 30	
PRECIPITATION	WATER EQUIVALENT:													
	TOTAL (IN.)	7.23	3.82	10.15	5.32	8.20	13.07	8.94	10.99	11.35	17.85	17.27	9.85	124.04
	GREATEST 24-HOUR (IN.)	1.38	0.84	2.17	1.64	1.76	2.60	4.40	2.21	2.08	3.38	3.81	2.46	4.40
	DATE OF OCCURRENCE	05-06	27-28	30-31	03-04	20-21	04-05	26-27	23	22-23	24-25	27-28	10	JUL 26-27
	NUMBER OF DAYS WITH:													
	PRECIPITATION ≥ 0.01	22	22	23	22	23	22	23	24	27	27	27	24	286
PRECIPITATION ≥ 0.10	13	11	19	13	13	18	13	17	22	20	21	20	200	
PRECIPITATION ≥ 1.00	1	0	3	1	3	5	1	5	3	9	7	2	40	
SNOWFALL	SNOW, ICE PELLETS, HAIL:													
	TOTAL (IN.)	0.0	0.0	0.0	0.0	0.0	0.0	0.0	0.0	0.0	0.0	0.0	0.0	0.0
	GREATEST 24-HOUR (IN.)	0.0	0.0	0.0	0.0	0.0	0.0	0.0	0.0	0.0	0.0	0.0	0.0	0.0
	DATE OF OCCURRENCE													
	MAXIMUM SNOW DEPTH (IN.)	0	0	0	0	0	0	0	0	0	0	0	0	0
	NUMBER OF DAYS WITH:													
SNOWFALL ≥ 1.0	0	0	0	0	0	0	0	0	0	0	0	0	0	

NORMALS, MEANS, AND EXTREMES

MAJURO, PC (PKMJ)

LATITUDE: 7° 05' 0 " N LONGITUDE: 171° 23' 0 " E ELEVATION (FT): GRND: 10 BARO: 8 TIME ZONE: 180 E MER (UTC - 12) WBAN: 40710

ELEMENT		POR	JAN	FEB	MAR	APR	MAY	JUN	JUL	AUG	SEP	OCT	NOV	DEC	YEAR
TEMPERATURE °F	NORMAL DAILY MAXIMUM	30	85.0	85.4	85.6	85.6	85.8	85.8	85.7	86.2	86.3	86.3	86.0	85.3	85.8
	MEAN DAILY MAXIMUM	44	85.0	85.4	85.6	85.6	85.8	85.8	85.8	86.3	86.4	86.4	86.1	85.3	85.8
	HIGHEST DAILY MAXIMUM	44	89	89	90	89	90	90	90	91	90	91	91	90	91
	YEAR OF OCCURRENCE		1998	1991	1998	1998	1992	1998	1980	1969	1998	1958	1990	1990	NOV 1990
	MEAN OF EXTREME MAXS.	44	86.9	87.1	87.6	87.5	87.7	87.9	88.0	88.4	88.6	88.7	88.3	87.5	87.8
	NORMAL DAILY MINIMUM	30	76.5	76.7	76.6	76.5	76.6	76.3	76.1	76.3	76.3	76.2	76.3	76.3	76.4
	MEAN DAILY MINIMUM	44	76.6	76.7	76.6	76.6	76.6	76.6	76.3	76.3	76.4	76.3	76.4	76.4	76.5
	LOWEST DAILY MINIMUM	44	69	70	70	70	70	70	70	71	70	70	68	70	68
	YEAR OF OCCURRENCE		1958	1985	1993	1985	1985	1958	1989	1990	1991	1984	1991	1984	NOV 1991
	MEAN OF EXTREME MINS.	44	72.8	73.1	72.9	73.0	73.1	72.9	72.6	72.8	72.8	72.7	72.9	72.8	72.9
	NORMAL DRY BULB	30	80.7	81.1	81.1	81.1	81.2	81.1	80.9	81.3	81.4	81.3	81.2	80.8	81.1
	MEAN DRY BULB	44	80.7	81.1	81.1	81.0	81.2	81.1	81.0	81.3	81.4	81.4	81.2	80.9	81.1
	MEAN WET BULB	16	76.7	76.2	76.5	76.9	77.5	77.6	77.4	77.4	77.3	77.4	77.7	77.3	77.2
	MEAN DEW POINT	16	74.4	73.8	74.2	74.8	75.7	75.7	75.4	75.2	75.2	75.3	75.7	75.2	75.1
	NORMAL NO. DAYS WITH:														
MAXIMUM ≥ 90°	30	0.0	0.0	0.0	0.0	*	0.0	*	0.3	0.4	0.6	0.3	0.1	1.7	
MAXIMUM ≤ 32°	30	0.0	0.0	0.0	0.0	0.0	0.0	0.0	0.0	0.0	0.0	0.0	0.0	0.0	
MINIMUM ≤ 32°	30	0.0	0.0	0.0	0.0	0.0	0.0	0.0	0.0	0.0	0.0	0.0	0.0	0.0	
MINIMUM ≤ 0°	30	0.0	0.0	0.0	0.0	0.0	0.0	0.0	0.0	0.0	0.0	0.0	0.0	0.0	
H/C	NORMAL HEATING DEG. DAYS	30	0	0	0	0	0	0	0	0	0	0	0	0	0
	NORMAL COOLING DEG. DAYS	30	487	451	499	483	502	483	493	505	492	505	486	490	5876
RH	NORMAL (PERCENT)	30	78	77	79	81	82	81	80	79	79	79	80	80	80
	HOUR 06 LST	30	80	79	81	83	84	83	83	82	82	82	82	82	82
	HOUR 12 LST	30	80	80	82	84	85	84	84	83	83	83	83	82	83
	HOUR 18 LST	30	74	73	75	78	78	78	77	76	76	76	77	76	76
	HOUR 24 LST	30	77	76	78	80	81	80	79	78	78	79	80	79	79
S	PERCENT POSSIBLE SUNSHINE	39	61	64	66	59	58	55	56	61	59	56	53	53	58
W/O	MEAN NO. DAYS WITH:														
	HEAVY FOG (VISBY ≤ 1/4 MI)	30	0.0	0.0	0.0	0.0	0.0	0.0	0.0	0.0	0.0	0.0	0.0	0.0	0.0
	THUNDERSTORMS	29	0.4	0.5	0.7	0.9	1.0	1.4	1.5	1.7	2.4	2.1	2.0	1.2	15.8
CLOUDINESS	MEAN:														
	SUNRISE-SUNSET (OKTAS)	43	6.9	6.6	6.8	6.9	6.9	7.0	7.0	6.7	6.8	6.7	7.0	7.0	6.9
	MIDNIGHT-MIDNIGHT (OKTAS)	20	6.9	6.5	6.6	7.1	6.9	6.9	7.0	6.7	6.8	6.7	6.6	6.8	6.8
	MEAN NO. DAYS WITH:														
	CLEAR	43	0.8	0.9	1.3	0.7	0.7	0.3	0.5	0.7	0.8	0.9	0.4	0.6	8.6
PARTLY CLOUDY	43	6.8	7.9	7.4	6.9	6.8	6.6	6.1	7.8	6.2	6.9	6.6	6.3	82.3	
CLOUDY	43	23.4	19.6	22.5	22.5	23.7	23.0	23.9	21.9	22.4	22.7	22.4	23.5	271.5	
PR	MEAN STATION PRESSURE (IN)	22	29.79	29.82	29.81	29.81	29.82	29.81	29.80	29.81	29.81	29.79	29.78	29.78	29.80
	MEAN SEA-LEVEL PRES. (IN)	16	29.80	29.82	29.83	29.83	29.83	30.00	29.82	29.82	29.83	29.82	29.80	29.79	29.83
WINDS	MEAN SPEED (MPH)	16	13.1	13.1	12.6	12.3	11.4	9.8	8.7	7.6	7.2	7.3	8.6	11.7	10.3
	PREVAIL.DIR (TENS OF DEGS)	12	07	07	07	07	07	07	07	07	07	07	07	07	07
	MAXIMUM 2-MINUTE:														
	SPEED (MPH)	10	36	32	25	26	25	29	25	26	29	33	31	35	36
	DIR. (TENS OF DEGS)		06	07	07	07	07	09	06	09	02	06	02	09	06
	YEAR OF OCCURRENCE		1992	1992	1993	1990	1989	1993	1989	1988	1994	1988	1990	1997	JAN 1992
	PEAK GUST:														
SPEED (MPH)	16	53	44	41	40	44	41	40	43	45	47	44	59	59	
DIR. (TENS OF DEGS)		NE	E	E	NE	NE	E	E	E	SW	E	SW	NE	NE	
YEAR OF OCCURRENCE		1992	1998	1994	1997	1998	1993	1989	1998	1994	1985	1991	1997	DEC 1997	
PRECIPITATION	NORMAL (IN)	30	8.43	6.15	8.28	10.28	11.18	11.59	13.00	11.52	12.42	13.84	12.80	11.85	131.34
	MAXIMUM MONTHLY (IN)	45	21.97	18.34	29.54	31.10	22.23	17.63	21.17	19.98	21.11	24.26	23.56	24.80	31.10
	YEAR OF OCCURRENCE		1961	1957	1991	1971	1956	1975	1987	1986	1964	1955	1978	1968	APR 1971
	MINIMUM MONTHLY (IN)	45	0.78	0.20	0.15	0.36	1.49	5.40	4.93	5.33	5.90	6.17	4.53	2.28	0.15
	YEAR OF OCCURRENCE		1973	1992	1992	1992	1983	1984	1997	1959	1992	1990	1972	1957	MAR 1992
	MAXIMUM IN 24 HOURS (IN)	45	9.57	6.65	15.26	6.63	8.10	7.39	5.86	5.29	5.76	8.74	10.01	17.88	17.88
	YEAR OF OCCURRENCE		1961	1991	1991	1973	1997	1983	1987	1986	1982	1974	1957	1972	DEC 1972
	NORMAL NO. DAYS WITH:														
PRECIPITATION ≥ 0.01	30	17.9	15.5	18.5	20.7	23.4	24.2	24.4	23.6	22.6	23.2	23.2	22.2	259.4	
PRECIPITATION ≥ 1.00	30	2.4	1.8	2.2	3.1	3.6	3.7	4.1	3.5	3.7	4.3	4.4	3.2	40.0	
SNOWFALL	NORMAL (IN)	30	0.0	0.0	0.0	0.0	0.0	0.0	0.0	0.0	0.0	0.0	0.0	0.0	0.0
	MAXIMUM MONTHLY (IN)	3	0.0	0.0	0.0	0.0	0.0	0.0	0.0	0.0	0.0	0.0	0.0	0.0	0.0
	YEAR OF OCCURRENCE														
	MAXIMUM IN 24 HOURS (IN)	45	0.0	0.0	0.0	0.0	0.0	0.0	0.0	0.0	0.0	0.0	0.0	0.0	0.0
	YEAR OF OCCURRENCE														
	MAXIMUM SNOW DEPTH (IN)	43	0	0	0	0	0	0	0	0	0	0	0	0	0
YEAR OF OCCURRENCE															
NORMAL NO. DAYS WITH:															
SNOWFALL ≥ 1.0	30	0.0	0.0	0.0	0.0	0.0	0.0	0.0	0.0	0.0	0.0	0.0	0.0	0.0	

PRECIPITATION (inches) 1999 MAJURO, MARSHALL ISLANDS, PC (PKMJ)

YEAR	JAN	FEB	MAR	APR	MAY	JUN	JUL	AUG	SEP	OCT	NOV	DEC	ANNUAL
1970	5.62	0.40	1.73	2.87	9.23	10.66	7.73	11.24	11.75	12.64	6.68	8.40	88.95
1971	8.21	5.74	9.80	31.10	19.86	13.42	15.49	14.92	7.93	18.06	9.46	8.40	162.39
1972	9.58	7.11	15.45	9.17	14.96	14.88	14.76	10.84	18.96	14.06	4.53	23.36	157.66
1973	0.78	1.84	11.05	14.59	14.33	12.23	7.29	13.86	12.78	13.79	14.21	7.24	123.99
1974	11.09	8.07	7.18	15.67	12.84	13.66	12.48	13.69	10.44	19.90	9.29	14.49	148.80
1975	5.20	3.21	7.77	12.76	10.58	17.63	14.23	16.35	16.51	18.29	15.28	13.95	151.76
1976	8.57	9.42	15.68	19.41	15.28	9.43	16.78	8.36	17.66	8.95	12.70	2.77	145.01
1977	2.39	0.77	2.60	10.62	17.21	8.37	10.88	11.15	9.72	17.59	11.85	18.88	122.03
1978	3.60	5.25	3.39	12.65	13.90	10.70	16.25	8.86	9.73	20.56	23.56	14.35	142.80
1979	6.78	2.77	7.14	11.75	7.91	13.23	6.67	13.03	6.54	15.04	11.33	7.10	109.29
1980	8.11	9.70	5.05	7.03	11.34	6.73	8.48	13.89	12.85	9.25	5.35	10.56	108.34
1981	0.90	4.34	17.40	10.20	9.04	5.43	16.53	12.24	6.71	7.28	14.61	14.47	119.15
1982	12.63	9.72	13.29	4.68	11.46	16.98	14.66	11.72	18.94	8.17	19.08	3.17	144.50
1983	0.83	0.98	0.66	1.97	1.49	14.45	12.58	6.05	11.25	13.47	9.84	12.74	86.31
1984	16.12	16.83	1.29	3.87	4.18	5.40	9.35	9.20	6.42	14.77	13.31	14.95	115.69
1985	8.70	16.56	4.59	15.38	9.67	14.67	13.18	16.77	8.03	18.06	12.81	11.30	149.72
1986	10.51	3.91	14.75	12.23	14.94	15.89	12.09	19.98	10.52	7.32	9.37	17.10	148.61
1987	6.24	10.38	4.90	2.14	9.22	14.76	21.17	8.36	11.09	11.29	15.45	7.48	122.48
1988	14.65	1.52	6.76	5.92	6.85	9.11	14.33	10.59	13.86	17.87	7.19	13.65	122.30
1989	7.75	8.30	4.76	8.54	11.18	7.20	17.44	10.34	14.55	16.41	19.84	8.52	134.83
1990	7.01	4.21	10.36	9.43	16.56	7.28	9.09	14.39	7.57	6.17	15.87	10.36	118.30
1991	9.87	11.68	29.54	20.46	13.24	16.60	16.41	11.04	19.73	10.44	15.35	3.48	177.84
1992	7.73	0.20	0.15	0.36	14.21	8.41	10.36	12.62	5.90	13.57	10.05	3.52	87.08
1993	5.82	8.51	13.49	14.10	11.31	8.17	13.92	13.32	9.80	20.48	14.41	19.24	152.57
1994	9.37	1.72	9.45	14.14	15.69	5.70	8.28	11.70	13.19	10.42	11.31	16.68	127.65
1995	8.17	4.37	4.59	21.97	7.91	12.22	10.60	11.89	15.78	10.59	11.18	12.10	131.37
1996	14.12	16.72	8.28	19.47	10.61	12.96	7.39	7.49	15.70	9.74	13.24	16.87	152.59
1997	5.44	6.95	6.57	14.54	21.33	8.19	4.93	11.69	19.09	10.91	7.93	7.63	125.20
1998	1.57	0.34	0.27	0.64	6.59	10.51	16.29	12.05	9.30	19.45	13.57	11.48	102.06
1999	7.23	3.82	10.15	5.32	8.20	13.07	8.94	10.99	11.35	17.85	17.27	9.85	124.04
POR= 45 YRS	8.05	6.59	8.75	11.01	11.51	11.60	12.50	11.50	12.62	14.14	13.28	11.22	132.77

WBAN : 40710

AVERAGE TEMPERATURE (°F) 1999 MAJURO, MARSHALL ISLANDS, PC (PKMJ)

YEAR	JAN	FEB	MAR	APR	MAY	JUN	JUL	AUG	SEP	OCT	NOV	DEC	ANNUAL
1970	81.2	82.0	82.0	82.1	81.5	80.7	81.1	80.8	81.1	80.6	81.2	80.6	81.2
1971	80.6	80.9	80.9	79.5	80.0	80.2	80.5	80.1	80.8	80.5	81.1	80.5	80.5
1972	80.2	80.9	80.8	80.8	81.2	81.5	80.9	81.2	81.3	80.9	81.7	80.8	81.0
1973	80.9	81.8	81.6	81.3	80.6	80.8	80.9	80.8	80.2	80.5	80.7	81.1	80.9
1974	79.9	80.8	80.8	80.5	80.8	80.6	80.7	81.0	80.9	81.0	80.9	80.3	80.7
1975	80.4	81.0	80.7	80.2	80.5	79.7	79.7	79.9	80.0	78.8	79.4	79.5	80.0
1976	79.4	79.4	79.6	79.5	80.0	80.0	80.0	80.7	80.4	81.4	80.2	80.1	80.1
1977	80.3	81.3	81.5	80.5	80.1	81.2	80.9	81.2	82.4	81.1	81.2	81.1	81.1
1978	81.2	81.1	81.5	80.9	80.5	80.9	80.4	81.5	81.6	81.2	80.6	80.3	81.0
1979	81.2	81.0	81.6	79.7	80.9	81.5	81.5	80.9	82.0	82.1	81.8	81.7	81.3
1980	81.4	81.3	81.3	81.6	81.5	81.9	81.5	81.5	81.7	82.2	81.9	81.0	81.6
1981	81.4	81.5	81.0	80.9	81.4	82.0	80.8	81.4	82.0	82.0	81.0	80.6	81.3
1982	80.5	80.7	80.5	81.8	81.3	81.3	81.1	81.3	81.4	82.0	81.4	80.2	81.1
1983	80.1	80.5	81.4	82.2	83.0	81.4	81.3	82.2	81.8	80.9	81.0	80.3	81.3
1984	80.6	80.6	82.0	81.9	81.5	80.3	80.6	81.1	81.2	80.8	80.6	80.9	81.0
1985	80.8	80.3	80.7	79.8	81.1	80.4	80.7	80.4	81.5	81.4	81.5	80.9	80.8
1986	81.1	81.9	80.3	81.1	81.7	81.1	81.7	81.8	81.8	82.1	81.9	80.5	81.4
1987	80.6	80.7	81.0	81.8	81.5	81.1	80.9	82.1	81.8	82.2	81.8	81.2	81.4
1988	80.9	81.9	81.8	82.1	81.8	81.3	80.2	80.9	80.6	80.3	81.2	80.4	81.1
1989	80.5	80.3	80.6	80.5	80.8	81.0	80.5	80.9	81.1	81.6	81.4	82.0	80.9
1990	81.2	81.6	82.0	81.9	81.1	81.6	81.4	81.7	81.8	81.7	81.8	80.4	81.5
1991	80.1	81.4	79.6	80.3	81.1	80.9	81.3	81.4	81.1	81.8	81.0	81.0	80.9
1992	79.6	81.3	81.6	82.7	81.9	82.0	81.6	82.0	82.6	82.2	81.5	81.6	81.7
1993	80.2	80.4	80.3	80.7	81.1	81.3	81.1	82.0	82.3	81.4	81.5	81.0	81.1
1994	81.2	81.8	81.4	81.6	81.4	82.1	81.9	82.3	82.1	82.3	82.6	81.1	81.8
1995	81.6	81.7	82.0	80.8	81.8	81.2	81.4	81.9	81.5	81.9	81.3	81.3	81.5
1996	81.0	81.1	81.6	80.6	81.3	80.9	82.0	81.9	81.8	82.2	82.0	81.7	81.5
1997	82.3	81.6	82.7	81.9	81.4	82.0	82.8	81.9	82.0	81.9	82.0	81.2	82.0
1998	81.4	82.2	83.0	83.0	82.5	82.3	81.6	82.0	82.7	82.3	81.8	81.6	82.2
1999	82.0	81.5	81.1	81.5	82.2	81.2	81.8	81.6	81.5	81.5	81.6	81.7	81.6
POR= 44 YRS	80.7	81.1	81.1	81.1	81.2	81.0	81.0	81.3	81.4	81.3	81.2	80.9	81.1

HEATING DEGREE DAYS (base 65°F) 1999 MAJURO, MARSHALL ISLANDS, PC (PKMJ)

YEAR	JUL	AUG	SEP	OCT	NOV	DEC	JAN	FEB	MAR	APR	MAY	JUN	TOTAL
1983-84	0	0	0	0	0	0	0	0	0	0	0	0	0
1984-85	0	0	0	0	0	0	0	0	0	0	0	0	0
1985-86	0	0	0	0	0	0	0	0	0	0	0	0	0
1986-87	0	0	0	0	0	0	0	0	0	0	0	0	0
1987-88	0	0	0	0	0	0	0	0	0	0	0	0	0
1988-89	0	0	0	0	0	0	0	0	0	0	0	0	0
1989-90	0	0	0	0	0	0	0	0	0	0	0	0	0
1990-91	0	0	0	0	0	0	0	0	0	0	0	0	0
1991-92	0	0	0	0	0	0	0	0	0	0	0	0	0
1992-93	0	0	0	0	0	0	0	0	0	0	0	0	0
1993-94	0	0	0	0	0	0	0	0	0	0	0	0	0
1994-95	0	0	0	0	0	0	0	0	0	0	0	0	0
1995-96	0	0	0	0	0	0	0	0	0	0	0	0	0
1996-97	0	0	0	0	0	0	0	0	0	0	0	0	0
1997-98	0	0	0	0	0	0	0	0	0	0	0	0	0
1998-99	0	0	0	0	0	0	0	0	0	0	0	0	0
1999-	0	0	0	0	0	0	0	0	0	0	0	0	0

WBAN : 40710

COOLING DEGREE DAYS (base 65°F) 1999 MAJURO, MARSHALL ISLANDS, PC (PKMJ)

YEAR	JAN	FEB	MAR	APR	MAY	JUN	JUL	AUG	SEP	OCT	NOV	DEC	ANNUAL
1970	512	483	536	521	518	474	507	497	491	489	491	488	6007
1971	494	454	500	443	473	462	486	476	480	487	492	489	5736
1972	480	466	498	483	509	504	502	508	499	500	506	498	5953
1973	498	476	523	494	490	480	500	493	464	484	479	505	5886
1974	469	449	497	468	498	475	492	503	486	505	487	481	5810
1975	483	456	494	464	490	447	460	468	458	436	439	458	5553
1976	451	424	459	442	470	460	473	491	469	514	465	477	5595
1977	478	464	518	475	476	495	501	510	528	506	492	507	5950
1978	508	456	517	482	486	482	483	518	506	509	475	480	5902
1979	507	454	519	447	501	504	520	500	512	537	510	527	6038
1980	519	478	513	507	519	516	516	518	509	542	515	502	6154
1981	515	470	501	483	516	517	496	512	517	534	489	488	6038
1982	485	447	487	511	511	497	507	511	498	534	498	478	5964
1983	476	439	519	522	566	500	511	537	511	499	487	482	6049
1984	492	459	533	512	518	464	490	507	494	495	475	499	5938
1985	499	434	492	453	507	469	495	486	503	515	500	501	5854
1986	504	480	480	491	525	491	525	530	510	538	513	489	6076
1987	491	447	501	510	520	489	499	537	510	540	510	508	6062
1988	500	498	529	519	528	494	480	499	474	482	493	487	5983
1989	488	436	492	473	499	488	488	499	493	521	500	534	5911
1990	509	473	532	513	502	506	517	526	511	524	510	487	6110
1991	475	467	460	466	508	487	512	518	491	527	487	502	5900
1992	458	480	522	538	529	516	522	535	533	539	502	521	6195
1993	481	437	480	477	507	497	506	531	525	514	503	503	5961
1994	510	480	517	506	513	516	534	543	517	543	537	504	6220
1995	523	471	533	482	528	493	516	534	501	533	498	513	6125
1996	502	474	521	472	515	483	535	532	511	540	515	526	6126
1997	548	470	557	514	516	514	556	533	516	532	517	510	6283
1998	515	485	566	550	550	527	519	535	539	542	512	520	6360
1999	532	468	506	502	538	492	524	523	499	518	504	526	6132

SNOWFALL (inches) 1999 MAJURO, MARSHALL ISLANDS, PC (PKMJ)

YEAR	JUL	AUG	SEP	OCT	NOV	DEC	JAN	FEB	MAR	APR	MAY	JUN	TOTAL
1971-72	0.0	0.0	0.0	0.0	0.0	0.0	0.0	0.0	0.0	0.0	0.0	0.0	0.0
1972-73	0.0	0.0	0.0	0.0	0.0	0.0	0.0	0.0	0.0	0.0	0.0	0.0	0.0
1973-74	0.0	0.0	0.0	0.0	0.0	0.0	0.0	0.0	0.0	0.0	0.0	0.0	0.0
1974-75	0.0	0.0	0.0	0.0	0.0	0.0	0.0	0.0	0.0	0.0	0.0	0.0	0.0
1975-76	0.0	0.0	0.0	0.0	0.0	0.0	0.0	0.0	0.0	0.0	0.0	0.0	0.0
1976-77	0.0	0.0	0.0	0.0	0.0	0.0	0.0	0.0	0.0	0.0	0.0	0.0	0.0
1977-78	0.0	0.0	0.0	0.0	0.0	0.0	0.0	0.0	0.0	0.0	0.0	0.0	0.0
1978-79	0.0	0.0	0.0	0.0	0.0	0.0	0.0	0.0	0.0	0.0	0.0	0.0	0.0
1979-80	0.0	0.0	0.0	0.0	0.0	0.0	0.0	0.0	0.0	0.0	0.0	0.0	0.0
1980-81	0.0	0.0	0.0	0.0	0.0	0.0	0.0	0.0	0.0	0.0	0.0	0.0	0.0
1981-82	0.0	0.0	0.0	0.0	0.0	0.0	0.0	0.0	0.0	0.0	0.0	0.0	0.0
1982-83	0.0	0.0	0.0	0.0	0.0	0.0	0.0	0.0	0.0	0.0	0.0	0.0	0.0
1983-84	0.0	0.0	0.0	0.0	0.0	0.0	0.0	0.0	0.0	0.0	0.0	0.0	0.0
1984-85	0.0	0.0	0.0	0.0	0.0	0.0	0.0	0.0	0.0	0.0	0.0	0.0	0.0
1985-86	0.0	0.0	0.0	0.0	0.0	0.0	0.0	0.0	0.0	0.0	0.0	0.0	0.0
1986-87	0.0	0.0	0.0	0.0	0.0	0.0	0.0	0.0	0.0	0.0	0.0	0.0	0.0
1987-88	0.0	0.0	0.0	0.0	0.0	0.0	0.0	0.0	0.0	0.0	0.0	0.0	0.0
1988-89	0.0	0.0	0.0	0.0	0.0	0.0	0.0	0.0	0.0	0.0	0.0	0.0	0.0
1989-90	0.0	0.0	0.0	0.0	0.0	0.0	0.0	0.0	0.0	0.0	0.0	0.0	0.0
1990-91	0.0	0.0	0.0	0.0	0.0	0.0	0.0	0.0	0.0	0.0	0.0	0.0	0.0
1991-92	0.0	0.0	0.0	0.0	0.0	0.0	0.0	0.0	0.0	0.0	0.0	0.0	0.0
1992-93	0.0	0.0	0.0	0.0	0.0	0.0	0.0	0.0	0.0	0.0	0.0	0.0	0.0
1993-94	0.0	0.0	0.0	0.0	0.0	0.0	0.0	0.0	0.0	0.0	0.0	0.0	0.0
1994-95	0.0	0.0	0.0	0.0	0.0	0.0	0.0	0.0	0.0	0.0	0.0	0.0	0.0
1995-96	0.0	0.0	0.0	0.0	0.0	0.0	0.0	0.0	0.0	0.0	0.0	0.0	0.0
1996-97	0.0	0.0	0.0	0.0	0.0	0.0	0.0	0.0	0.0	0.0	0.0	0.0	0.0
1997-98	0.0	0.0	0.0	0.0	0.0	0.0	0.0	0.0	0.0	0.0	0.0	0.0	0.0
1998-99	0.0	0.0	0.0	0.0	0.0	0.0	0.0	0.0	0.0	0.0	0.0	0.0	0.0
1999-	0.0	0.0	0.0	0.0	0.0	0.0	0.0	0.0	0.0	0.0	0.0	0.0	0.0
POR= 44 YRS	0.0	0.0	0.0	0.0	0.0	0.0	0.0	0.0	0.0	0.0	0.0	0.0	0.0

WBAN : 40710

REFERENCE NOTES:

<p>PAGE 1: THE TEMPERATURE GRAPH SHOWS NORMAL MAXIMUM AND NORMAL MINIMUM DAILY TEMPERATURES (SOLID CURVES) AND THE ACTUAL DAILY HIGH AND LOW TEMPERATURES (VERTICAL BARS).</p> <p>PAGE 2 AND 3: H/C INDICATES HEATING AND COOLING DEGREE DAYS. RH INDICATES RELATIVE HUMIDITY W/O INDICATES WEATHER AND OBSTRUCTIONS S INDICATES SUNSHINE. PR INDICATES PRESSURE. CLOUDINESS ON PAGE 3 IS THE SUM OF THE CEILOMETER AND SATELLITE DATA NOT TO EXCEED EIGHT EIGHTHS(OKTAS).</p> <p>GENERAL: T INDICATES TRACE PRECIPITATION, AN AMOUNT GREATER THAN ZERO BUT LESS THAN THE LOWEST REPORTABLE VALUE. + INDICATES THE VALUE ALSO OCCURS ON EARLIER DATES. BLANK ENTRIES DENOTE MISSING OR UNREPORTED DATA. NORMALS ARE 30-YEAR AVERAGES (1961 - 1990). ASOS INDICATES AUTOMATED SURFACE OBSERVING SYSTEM. PM INDICATES THE LAST DAY OF THE PREVIOUS MONTH. POR (PERIOD OF RECORD) BEGINS WITH THE JANUARY DATA MONTH AND IS THE NUMBER OF YEARS USED TO COMPUTE THE MEAN. INDIVIDUAL MONTHS WITHIN THE POR MAY BE MISSING. WHEN THE POR FOR A NORMAL IS LESS THAN 30 YEARS, THE NORMAL IS PROVISIONAL AND IS BASED ON THE NUMBER OF YEARS INDICATED. 0.* OR * INDICATES THE VALUE OR MEAN-DAYS-WITH IS BETWEEN 0.00 AND 0.05. CLOUDINESS FOR ASOS STATIONS DIFFERS FROM THE NON-ASOS OBSERVATION TAKEN BY A HUMAN OBSERVER. ASOS STATION CLOUDINESS IS BASED ON TIME-AVERAGED CEILOMETER DATA FOR CLOUDS AT OR BELOW 12,000 FEET AND ON SATELLITE DATA FOR CLOUDS ABOVE 12,000 FEET. THE NUMBER OF DAYS WITH CLEAR, PARTLY CLOUDY, AND CLOUDY CONDITIONS FOR ASOS STATIONS IS THE SUM OF THE CEILOMETER AND SATELLITE DATA FOR THE SUNRISE TO SUNSET PERIOD.</p>	<p>GENERAL CONTINUED: CLEAR INDICATES 0 - 2 OKTAS, PARTLY CLOUDY INDICATES 3 - 6 OKTAS, AND CLOUDY INDICATES 7 OR 8 OKTAS. WHEN AT LEAST ONE OF THE ELEMENTS (CEILOMETER OR SATELLITE) IS MISSING, THE DAILY CLOUDINESS IS NOT COMPUTED. WIND DIRECTION IS RECORDED IN TENS OF DEGREES (2 DIGITS) CLOCKWISE FROM TRUE NORTH. "00" INDICATES CALM. "36" INDICATES TRUE NORTH. RESULTANT WIND IS THE VECTOR AVERAGE OF THE SPEED AND DIRECTION. AVERAGE TEMPERATURE IS THE SUM OF THE MEAN DAILY MAXIMUM AND MINIMUM TEMPERATURE DIVIDED BY 2. SNOWFALL DATA COMPRISE ALL FORMS OF FROZEN PRECIPITATION, INCLUDING HAIL. A HEATING (COOLING) DEGREE DAY IS THE DIFFERENCE BETWEEN THE AVERAGE DAILY TEMPERATURE AND 65° F. DRY BULB IS THE TEMPERATURE OF THE AMBIENT AIR. DEW POINT IS THE TEMPERATURE TO WHICH THE AIR MUST BE COOLED TO ACHIEVE 100 PERCENT RELATIVE HUMIDITY. WET BULB IS THE TEMPERATURE THE AIR WOULD HAVE IF THE MOISTURE CONTENT WAS INCREASED TO 100 PERCENT RELATIVE HUMIDITY.</p> <p>ON JULY 1, 1996, THE NATIONAL WEATHER SERVICE BEGAN USING THE "METAR" OBSERVATION CODE THAT WAS ALREADY EMPLOYED BY MOST OTHER NATIONS OF THE WORLD. THE MOST NOTICEABLE DIFFERENCE IN THIS ANNUAL PUBLICATION WILL BE THE CHANGE IN UNITS FROM TENTHS TO EIGHTHS(OKTAS) FOR REPORTING THE AMOUNT OF SKY COVER.</p>
---	---

1999
MAJURO, MARSHALL ISLANDS,
PACIFIC (PKMJ)

The station at Majuro is located on the southeastern end of the Majuro Atoll. This atoll is approximately 160 square miles in area with a lagoon of about 150 square miles. The lagoon is oblong, 22 miles long and about 4 miles wide. Dalap Island, on which the station is located, is oriented roughly east-west.

The climate of Majuro is predominately a trade-wind climate with the trade winds prevailing throughout the year. Tropical storms are very rare.

Minor storms of the easterly wave type are quite common from March to April and October to November. The trades are frequently locally interrupted during the summer months by the movement of the zone of intertropical convergence across the area.

Rainfall is heavy, with the wettest months being October and November. Precipitation is generally of the shower type, however, continuous rain is not uncommon.

One of the outstanding features of the climate is the extremely consistent temperature regime. The range between the coolest and the warmest months averages less than 1 degree. The average daily range is less than 9 degrees. Nighttime minima are generally 2-4 degrees warmer than the average daily minimum because lowest temperatures usually occur during heavy showers in the daytime.

Skies at Majuro are quite cloudy. Cumuliform clouds are predominant but altostratus-altocumulus and cirriform clouds are also present most of the time.

STATION LOCATION

MAJURO, MARSHALL IS., PACIFIC

LOCATION	OCCUPIED FROM	OCCUPIED TO	AIRLINE DISTANCES AND DIRECTIONS FROM PREVIOUS LOCATION	LATITUDE NORTH	LONGITUDE EAST	ELEVATION ABOVE											AUGUST 1957	* Type M = AMOS T = AUTOB S = ASOS W = AWOS	REMARKS
						SEA LEVEL	GROUND												
							WIND	WIND	WIND	WIND	WIND	WIND	WIND	WIND	WIND	WIND			
U.S. Navy	2/1944	7/1945																Location, elevations and instrumental information unknown.	
Dalap International Airport	?/1952	?/1954	Unknown	7°05'	171°23'													Elevations and instrumental information unknown.	
Radio Station	12/08/53	2/01/55	1 mi. N	7°06'	171°23'	10	90	5	5									Department of Interior.	
Dalap International Airport	2/01/55	11/21/55	1 mi. S	7°05'	171°23'	10	25	5	5									WB Station activated.	
Dalap International Airport	11/21/55	6/22/57	125 ft. W	7°05'	171°23'	10	33	5	5										
Majuro Airport	6/22/57	Present	No Change	7°05'	171°23'	10	33 a20	7	6	%6	3	NA	3	NA	NA	NA		Large instrument shelter installed 5 feet East of old shelter. Tipping bucket gage installed 3/8/58. a - Lowered 12/15/65. % - Commissioned 12/15/65.	

SUBSCRIPTION: Price and ordering information available through: National Climatic Data Center, Federal Building, Asheville, North Carolina 28801.
INQUIRIES/COMMENTS CALL: (828) 271-4800

National Climatic Data Center
151 Patton Avenue, Rm 120
Asheville NC 28801-5001

OFFICIAL BUSINESS
PENALTY FOR PRIVATE USE \$300
FORWARD AND ADDRESS CORRECTION

FIRST CLASS
POSTAGE & FEES PAID
United States Department of Commerce
NOAA Permit No. G - 19