

# 1999

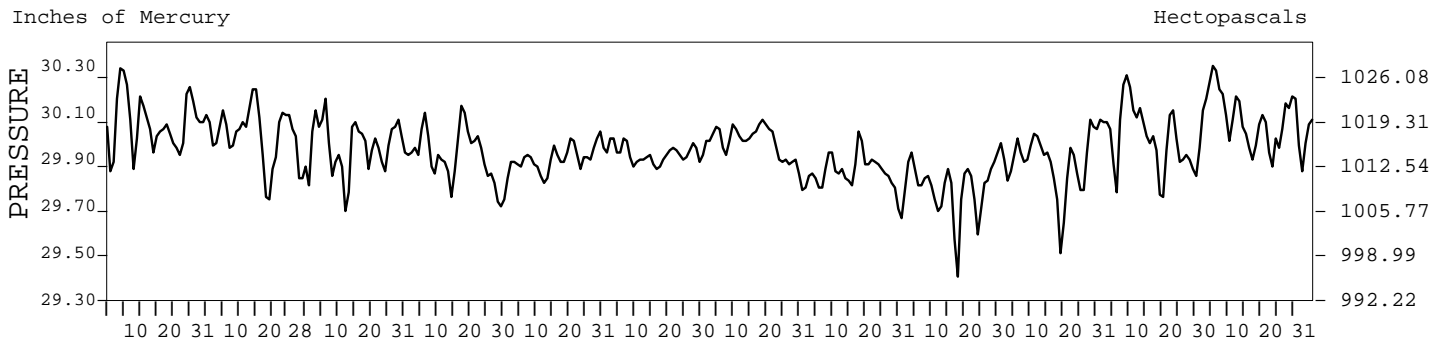
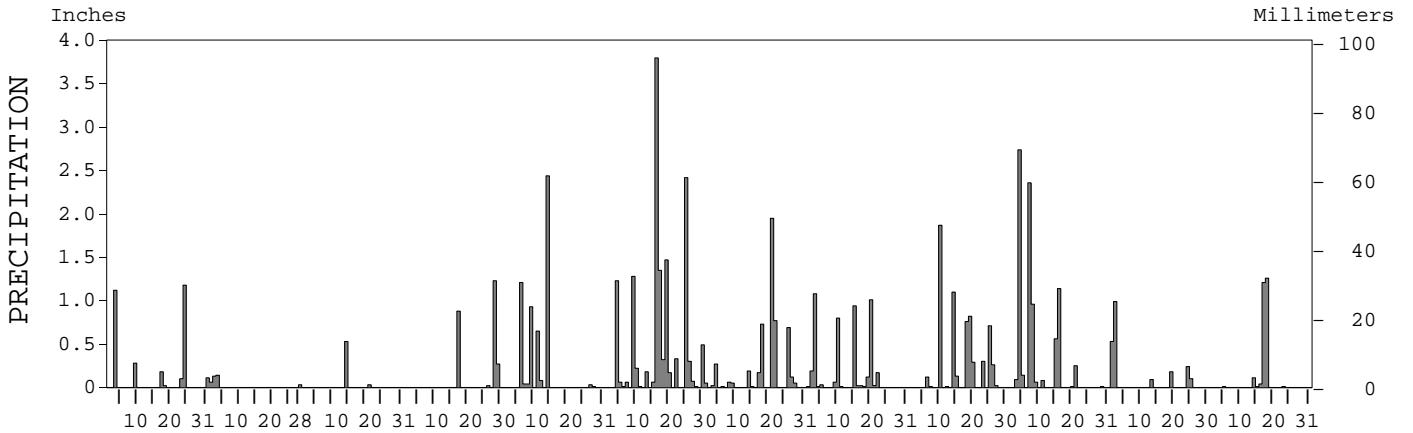
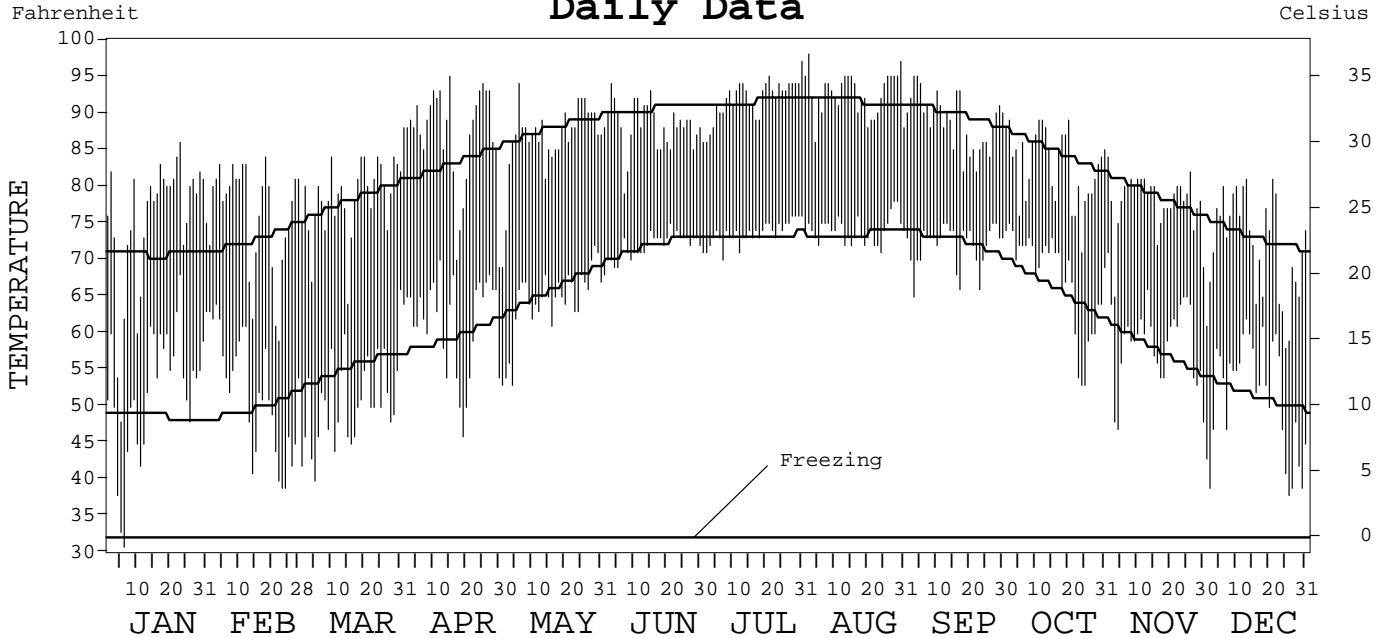
## LOCAL CLIMATOLOGICAL DATA ANNUAL SUMMARY WITH COMPARATIVE DATA



ISSN 0198-1277

### ORLANDO, FLORIDA (MCO)

#### Daily Data



I CERTIFY THAT THIS IS AN OFFICIAL PUBLICATION OF THE NATIONAL OCEANIC AND ATMOSPHERIC ADMINISTRATION, AND IS COMPILED FROM RECORDS ON FILE AT THE NATIONAL CLIMATIC DATA CENTER.

NATIONAL OCEANIC AND ATMOSPHERIC ADMINISTRATION  
NATIONAL ENVIRONMENTAL AND INFORMATION SERVICE  
NATIONAL ENVIRONMENTAL AND INFORMATION SERVICE  
NATIONAL CLIMATIC DATA CENTER  
NATIONAL CLIMATIC DATA CENTER  
DIRECTOR  
NATIONAL CLIMATIC DATA CENTER

# METEOROLOGICAL DATA FOR 1999

## ORLANDO, FL (MCO)

LATITUDE: 28° 26' 02" N      LONGITUDE: 81° 19' 30" W      ELEVATION (FT): GRND: 96      BARO: 96      TIME ZONE: EASTERN (UTC + 5)      WBAN: 12815

ELEMENT		JAN	FEB	MAR	APR	MAY	JUN	JUL	AUG	SEP	OCT	NOV	DEC	YEAR	
TEMPERATURE ° F	MEAN DAILY MAXIMUM	75.3	76.1	78.4	86.9	86.6	88.3	91.9	92.6	88.9	82.9	77.9	71.7	83.1	
	HIGHEST DAILY MAXIMUM	86	84	84	95	94	94	97	98	95	89	84	81	98	
	DATE OF OCCURRENCE	23	18	29+	15	06	03	31	02	04+	20+	01	21+	AUG 02	
	MEAN DAILY MINIMUM	52.5	51.8	50.7	61.5	64.3	71.9	73.6	74.1	72.0	67.3	58.9	51.3	62.5	
	LOWEST DAILY MINIMUM	31	39	40	46	53	68	70	71	65	53	47	38	31	
	DATE OF OCCURRENCE	06	24+	05	19	04+	01	07	24	03	25+	04	26	JAN 06	
	AVERAGE DRY BULB	63.9	64.0	64.6	74.2	75.5	80.1	82.8	83.4	80.5	75.1	68.4	61.5	72.8	
	MEAN WET BULB	59.0	57.8	57.0	65.2	67.8	73.4	75.3	76.0	74.0	69.3	62.2	56.3	66.1	
	MEAN DEW POINT	55.7	53.4	50.8	59.8	64.1	71.0	72.7	73.9	71.5	66.5	58.6	52.1	62.5	
	NUMBER OF DAYS WITH:														
	MAXIMUM ≥ 90°	0	0	0	11	8	11	25	26	16	0	0	0	0	97
	MAXIMUM ≤ 32°	0	0	0	0	0	0	0	0	0	0	0	0	0	0
	MINIMUM ≤ 32°	1	0	0	0	0	0	0	0	0	0	0	0	0	1
	MINIMUM ≤ 0°	0	0	0	0	0	0	0	0	0	0	0	0	0	0
H/C	HEATING DEGREE DAYS	109	92	61	12	5	0	0	0	0	3	20	140	442	
	COOLING DEGREE DAYS	82	69	54	297	336	460	560	578	471	321	130	38	3396	
RH	MEAN (PERCENT)	79	74	65	67	73	81	76	80	80	79	76	75	75	
	HOUR 01 LST	92	89	80	84	89	93	90	93	93	90	90	87	89	
	HOUR 07 LST	93	91	90	88	89	92	91	95	93	90	91	90	91	
	HOUR 13 LST	58	51	42	44	50	61	57	58	61	62	56	57	55	
	HOUR 19 LST	76	65	56	57	68	81	71	79	78	78	74	72	71	
S	PERCENT POSSIBLE SUNSHINE														
W/O	NUMBER OF DAYS WITH:														
	HEAVY FOG (VISBY ≤ 1/4 MI)	3	7	0	2	1	3	0	1	1	1	1	2	22	
	THUNDERSTORMS	4	2	1	5	12	17	12	19	6	1	0	0	79	
CLOUDINESS	SUNRISE-SUNSET: (OKTAS)														
	CEILOMETER (≤ 12,000 FT.)														
	SATELLITE (> 12,000 FT.)														
	MIDNIGHT-MIDNIGHT: (OKTAS)														
	CEILOMETER (≤ 12,000 FT.)														
	SATELLITE (> 12,000 FT.)														
NUMBER OF DAYS WITH:															
CLEAR															
PARTLY CLOUDY															
CLOUDY															
PR	MEAN STATION PRESS. (IN.)	30.06	30.01	29.95	29.92	29.90	29.92	29.96	29.84	29.78	29.91	30.00	30.06	29.94	
	MEAN SEA-LEVEL PRESS. (IN.)	30.16	30.12	30.06	30.03	30.01	30.03	30.07		29.89	30.02	30.10	30.16		
WINDS	RESULTANT SPEED (MPH)	1.7	3.0	1.2	0.9	1.1	0.2	1.5	0.2	1.8	4.2	6.0	2.3	1.1	
	RES. DIR. (TENS OF DEGS.)	07	31	27	23	06	23	22	15	11	01	02	36	01	
	MEAN SPEED (MPH)	7.8	7.7	7.9	7.6	7.4	6.2	5.6	6.3	7.0	9.0	8.8	6.7	7.3	
	PREVAIL. DIR. (TENS OF DEGS.)	36	36	09	12	09	09	11	19	10	07	36	36	36	
	MAXIMUM 2-MINUTE WIND:														
	SPEED (MPH)	31	31	25	29	43	40	28	32	36	41	25	22	43	
	DIR. (TENS OF DEGS.)	29	24	20	24	22	04	01	19	03	01	01	03	22	
	DATE OF OCCURRENCE	03	28	09+	15	06	04	21	15	14	16	30	25	MAY 06	
	MAXIMUM 5-SECOND WIND:														
	SPEED (MPH)	36	37	32	39	55	45	39	40	48	48	32	24	55	
DIR. (TENS OF DEGS.)	28	24	27	24	26	04	30	24	01	01	03	28	26		
DATE OF OCCURRENCE	03	28	14	15	14	04	26	10	15	16	30	28+	MAY 14		
PRECIPITATION	WATER EQUIVALENT:														
	TOTAL (IN.)	2.99	0.36	0.56	2.40	5.43	13.84	5.14	4.50	6.40	8.40	2.13	2.65	54.80	
	GREATEST 24-HOUR (IN.)	1.28	0.14	0.53	1.24	2.44	5.01	2.72	1.08	1.87	2.88	1.52	2.07	5.01	
	DATE OF OCCURRENCE	23-24	03	14	28-29	14	16-17	21-22	03	10	04-05	01-02	17-18	JUN 16-17	
	NUMBER OF DAYS WITH:														
	PRECIPITATION ≥ 0.01	7	4	2	4	9	20	15	16	13	12	6	7	115	
PRECIPITATION ≥ 0.10	6	2	1	3	4	13	8	7	10	7	5	3	69		
PRECIPITATION ≥ 1.00	2	0	0	1	2	6	1	2	2	3	0	2	21		
SNOWFALL	SNOW, ICE PELLETS, HAIL:														
	TOTAL (IN.)	0.0	0.0	0.0	0.0	0.0	0.0	0.0	0.0	0.0	0.0	0.0	0.0	0.0	
	GREATEST 24-HOUR (IN.)	0.0	0.0	0.0	0.0	0.0	0.0	0.0	0.0	0.0	0.0	0.0	0.0	0.0	
	DATE OF OCCURRENCE														
	MAXIMUM SNOW DEPTH (IN.)	0	0	0	0	0	0	0	0	0	0	0	0	0	
	DATE OF OCCURRENCE														
NUMBER OF DAYS WITH:															
SNOWFALL ≥ 1.0	0	0	0	0	0	0	0	0	0	0	0	0	0		

# NORMALS, MEANS, AND EXTREMES

## ORLANDO, FL (MCO)

LATITUDE: 28° 26' 02" N      LONGITUDE: 81° 19' 30" W      ELEVATION (FT): GRND: 96      BARO: 96      TIME ZONE: EASTERN (UTC + 5)      WBAN: 12815

ELEMENT		POR	JAN	FEB	MAR	APR	MAY	JUN	JUL	AUG	SEP	OCT	NOV	DEC	YEAR
TEMPERATURE °F	NORMAL DAILY MAXIMUM	30	70.8	72.7	78.0	83.0	87.8	90.5	91.5	91.5	89.7	84.6	78.5	72.9	82.6
	MEAN DAILY MAXIMUM	43	70.3	72.8	77.0	82.3	87.4	90.0	91.1	90.7	88.9	83.5	77.6	72.0	82.0
	HIGHEST DAILY MAXIMUM	57	87	90	92	96	102	100	101	100	98	95	89	90	102
	YEAR OF OCCURRENCE		1991	1962	1994	1968	1945	1998	1998	1980	1988	1986	1992	1978	MAY 1945
	MEAN OF EXTREME MAXS.	43	82.6	84.2	87.3	90.5	93.6	95.2	95.5	95.1	93.5	90.5	85.8	83.0	89.7
	NORMAL DAILY MINIMUM	30	48.6	49.7	55.2	59.4	65.9	71.8	73.1	73.4	72.4	65.8	57.5	51.3	62.0
	MEAN DAILY MINIMUM	43	49.1	51.3	55.5	60.5	66.4	71.5	73.2	73.6	72.4	65.8	58.0	51.5	62.4
	LOWEST DAILY MINIMUM	57	19	26	25	38	48	53	64	64	56	43	29	20	19
	YEAR OF OCCURRENCE		1985	1996	1980	1987	1992	1984	1981	1957	1956	1957	1950	1983	JAN 1985
	MEAN OF EXTREME MINS.	43	32.1	35.7	40.1	48.7	57.7	66.3	69.5	70.1	67.1	52.8	42.7	34.8	51.5
	NORMAL DRY BULB	30	59.7	61.2	66.7	71.2	76.9	81.1	82.3	82.5	81.0	75.2	68.0	62.1	72.3
	MEAN DRY BULB	43	59.7	61.9	66.3	71.5	76.9	80.8	82.1	82.2	80.7	74.7	67.8	61.8	72.2
	MEAN WET BULB	16	56.2	57.4	59.9	63.5	69.2	73.9	75.2	75.5	74.4	69.0	63.6	57.8	66.3
	MEAN DEW POINT	16	52.1	52.7	55.1	58.8	65.1	71.2	72.7	73.2	72.1	66.1	60.5	54.1	62.8
	NORMAL NO. DAYS WITH:														
MAXIMUM ≥ 90°	30	0.0	0.0	0.4	2.8	9.5	17.6	23.1	22.8	15.7	3.3	0.0	*	95.2	
MAXIMUM ≤ 32°	30	0.0	0.0	0.0	0.0	0.0	0.0	0.0	0.0	0.0	0.0	0.0	0.0	0.0	
MINIMUM ≤ 32°	30	1.7	0.5	0.1	0.0	0.0	0.0	0.0	0.0	0.0	0.0	*	0.7	3.0	
MINIMUM ≤ 0°	30	0.0	0.0	0.0	0.0	0.0	0.0	0.0	0.0	0.0	0.0	0.0	0.0	0.0	
H/C	NORMAL HEATING DEG. DAYS	30	234	164	65	5	0	0	0	0	0	0	54	164	686
	NORMAL COOLING DEG. DAYS	30	70	58	117	191	369	483	536	543	480	316	144	74	3381
RH	NORMAL (PERCENT)	30	73	71	70	67	70	76	78	79	79	75	75	74	74
	HOUR 01 LST	30	84	84	84	83	86	89	89	91	90	87	87	86	87
	HOUR 07 LST	30	87	87	88	87	88	90	91	92	91	88	89	87	89
	HOUR 13 LST	30	56	53	51	46	49	57	59	60	60	55	55	56	55
	HOUR 19 LST	30	68	63	62	58	63	73	75	78	78	74	73	72	70
S	PERCENT POSSIBLE SUNSHINE														
W/O	MEAN NO. DAYS WITH:														
	HEAVY FOG (VISBY ≤ 1/4 MI)	51	5.2	3.4	2.5	1.4	1.4	0.8	0.5	0.9	1.1	1.7	2.7	4.5	26.1
	THUNDERSTORMS	55	1.1	1.7	3.1	3.4	7.6	14.6	19.0	17.7	9.6	2.6	1.2	1.2	82.8
CLOUDINESS	MEAN:														
	SUNRISE-SUNSET (OKTAS)	48	4.6	4.6	4.5	4.2	4.3	5.2	5.1	5.1	5.1	4.4	4.2	4.5	4.7
	MIDNIGHT-MIDNIGHT (OKTAS)	22	4.4	4.3	4.2	3.6	4.1	4.9	4.6	4.6	4.5	3.9	4.1	4.3	4.3
	MEAN NO. DAYS WITH:														
	CLEAR	48	8.9	8.6	9.1	10.0	8.7	4.1	3.3	3.2	3.7	9.4	10.1	9.6	88.7
PARTLY CLOUDY	48	10.2	8.5	10.5	11.4	13.6	14.1	16.7	16.7	14.6	11.1	10.2	9.2	146.8	
CLOUDY	48	11.9	11.1	11.5	8.6	8.7	11.8	11.1	11.1	11.7	10.6	9.7	12.2	130.0	
PR	MEAN STATION PRESSURE (IN)	27	30.00	30.00	30.00	29.90	29.90	29.90	30.00	29.90	29.90	30.00	29.99	29.99	29.95
	MEAN SEA-LEVEL PRES. (IN)	16	30.13	30.11	30.06	30.03	30.02	30.02	30.08	30.04	30.00	30.03	30.09	30.14	30.06
WINDS	MEAN SPEED (MPH)	45	8.3	8.7	9.0	8.5	7.7	6.9	6.2	5.9	6.5	7.5	7.7	7.6	7.5
	PREVAIL. DIR (TENS OF DEGS)	34	36	36	18	10	09	18	18	18	06	36	36	36	36
	MAXIMUM 2-MINUTE:														
	SPEED (MPH)	3	31	38	32	34	51	40	34	36	36	41	26	26	51
	DIR. (TENS OF DEGS)		29	18	32	30	35	04	14	31	12	01	35	27	35
	YEAR OF OCCURRENCE		1999	1998	1997	1997	1997	1999	1997	1998	1998	1999	1998	1997	MAY 1997
	MAXIMUM 5-SECOND:														
SPEED (MPH)	3	36	47	54	44	70	45	51	53	48	48	34	36	70	
DIR. (TENS OF DEGS)		28	20	23	31	34	04	16	19	01	01	33	29	34	
YEAR OF OCCURRENCE		1999	1998	1998	1997	1997	1999	1997	1998	1999	1999	1998	1997	MAY 1997	
PRECIPITATION	NORMAL (IN)	30	2.30	3.02	3.21	1.80	3.55	7.32	7.25	6.78	6.01	2.42	2.30	2.15	48.11
	MAXIMUM MONTHLY (IN)	57	7.23	8.74	11.38	9.10	10.36	18.28	19.57	16.11	15.87	14.51	10.29	12.63	19.57
	YEAR OF OCCURRENCE		1986	1998	1987	1992	1976	1968	1960	1972	1945	1950	1987	1997	JUL 1960
	MINIMUM MONTHLY (IN)	57	0.15	0.10	0.16	0.14	0.43	1.58	2.60	2.92	0.43	0.35	0.03	T	T
	YEAR OF OCCURRENCE		1950	1944	1956	1977	1961	1998	1992	1980	1972	1967	1967	1944	DEC 1944
	MAXIMUM IN 24 HOURS (IN)	57	4.19	4.38	5.03	5.65	3.18	8.40	8.19	5.29	9.67	7.74	5.87	3.61	9.67
	YEAR OF OCCURRENCE		1986	1970	1960	1992	1980	1945	1960	1949	1945	1950	1988	1969	SEP 1945
	NORMAL NO. DAYS WITH:														
PRECIPITATION ≥ 0.01	30	7.0	7.4	7.4	4.3	8.8	14.3	16.3	15.7	13.4	7.7	7.0	6.0	115.3	
PRECIPITATION ≥ 1.00	30	0.6	0.8	0.8	0.4	1.0	2.3	2.0	1.9	1.7	0.4	1.6	0.6	14.1	
SNOWFALL	NORMAL (IN)	30	T	0.0	0.0	0.0	0.0	0.0	0.0	0.0	0.0	0.0	0.0	0.0	0.0
	MAXIMUM MONTHLY (IN)	27	T	0.0	T	T	T	0.0	T	T	0.0	0.0	0.0	0.0	T
	YEAR OF OCCURRENCE		1977		1992	1992	1997		1993	1989					MAY 1997
	MAXIMUM IN 24 HOURS (IN)	27	T	0.0	T	T	T	0.0	T	T	0.0	0.0	0.0	0.0	T
	YEAR OF OCCURRENCE		1977		1992	1992	1997		1993	1989					MAY 1997
	MAXIMUM SNOW DEPTH (IN)	42	0	0	0	0	0	0	0	0	0	0	0	0	0
	YEAR OF OCCURRENCE														
NORMAL NO. DAYS WITH:															
SNOWFALL ≥ 1.0	30	0.0	0.0	0.0	0.0	0.0	0.0	0.0	0.0	0.0	0.0	0.0	0.0	0.0	

PRECIPITATION (inches) 1999 ORLANDO, FL (MCO)

YEAR	JAN	FEB	MAR	APR	MAY	JUN	JUL	AUG	SEP	OCT	NOV	DEC	ANNUAL
1970	4.05	6.77	3.66	0.45	4.08	4.92	5.97	5.91	3.25	2.60	0.24	2.06	43.96
1971	0.45	2.98	1.46	1.52	4.31	4.39	8.29	7.51	2.98	3.06	1.21	1.93	40.09
1972	0.99	4.96	5.06	1.39	3.76	6.33	3.98	16.11	0.43	2.34	4.11	1.89	51.35
1973	4.82	2.73	4.13	2.82	4.74	6.63	6.24	7.33	11.53	1.10	0.74	2.56	55.37
1974	0.18	0.63	3.67	1.17	2.69	15.28	6.01	6.56	5.78	0.48	0.31	1.62	44.38
1975	0.98	1.49	1.10	1.36	7.52	9.70	9.26	4.75	4.97	4.74	0.66	0.51	47.04
1976	0.37	0.83	1.72	2.16	10.36	9.93	7.05	3.25	5.87	0.74	2.03	2.77	47.08
1977	1.81	1.76	1.82	0.14	1.47	4.47	6.61	6.28	7.03	0.43	2.60	3.70	38.12
1978	2.49	5.45	2.14	0.61	3.16	10.00	11.92	5.13	4.31	1.51	0.18	3.69	50.59
1979	6.48	1.45	3.24	1.08	7.66	4.00	7.95	5.88	9.19	0.43	1.93	0.94	50.23
1980	2.45	1.64	1.51	4.07	6.96	5.25	5.14	2.92	3.70	0.55	6.55	0.47	41.21
1981	0.21	4.36	1.85	0.18	2.02	12.49	3.53	5.60	8.26	3.13	2.50	2.97	47.10
1982	1.72	1.34	4.85	6.27	5.29	6.06	11.81	5.03	6.96	0.74	0.53	1.01	51.61
1983	2.08	8.32	5.37	3.21	1.77	7.82	6.49	4.83	5.16	3.78	1.36	5.33	55.52
1984	2.01	2.73	1.85	6.21	3.20	5.32	6.19	7.89	6.19	0.56	2.10	0.19	44.44
1985	0.91	1.27	4.59	1.69	3.00	4.54	7.28	11.63	5.45	2.55	0.82	3.46	47.19
1986	7.23	1.84	2.63	0.49	0.88	9.50	5.85	5.99	4.50	5.63	1.69	3.60	49.83
1987	1.27	1.74	11.38	0.59	1.40	3.54	7.95	6.07	8.64	3.41	10.29	0.51	56.79
1988	3.12	1.38	6.07	2.02	2.82	4.17	9.44	7.94	5.67	1.42	7.44	1.00	52.49
1989	3.80	0.15	1.35	2.28	2.38	6.79	4.74	6.20	10.29	1.75	1.44	4.49	45.66
1990	0.23	4.13	1.92	1.73	0.55	6.22	6.68	3.78	2.46	2.10	1.05	0.83	31.68
1991	2.37	0.98	6.66	7.72	9.48	5.98	10.78	7.13	4.53	4.76	0.27	0.24	60.90
1992	1.35	2.42	3.67	9.10	1.19	8.68	2.60	8.03	7.13	5.17	2.74	0.88	52.96
1993	4.89	1.48	6.26	1.78	2.32	4.47	6.49	5.95	5.35	4.61	0.17	0.76	44.53
1994	4.00	3.58	1.21	3.03	2.87	10.28	13.27	6.23	7.84	5.18	7.32	3.04	67.85
1995	1.50	1.13	2.12	0.81	4.24	8.23	5.10	9.48	3.59	4.35	1.74	0.76	43.05
1996	5.39	1.52	9.87	0.68	5.12	6.51	4.06	11.33	6.04	3.28	0.72	2.14	56.66
1997	1.13	2.44	3.46	4.02	3.17	8.20	11.51	7.99	2.59	4.22	3.15	12.63	64.51
1998	1.99	8.74	5.26	0.52	3.17	1.58	8.61	5.59	5.36	0.64	1.67	0.62	43.75
1999	2.99	0.36	0.56	2.40	5.43	13.84	5.14	4.50	6.40	8.40	2.13	2.65	54.80
POR= 57 YRS	2.28	2.73	3.56	2.55	3.47	7.10	7.70	6.75	6.60	3.45	1.90	2.08	50.17

WBAN : 12815

AVERAGE TEMPERATURE (°F) 1999 ORLANDO, FL (MCO)

YEAR	JAN	FEB	MAR	APR	MAY	JUN	JUL	AUG	SEP	OCT	NOV	DEC	ANNUAL
1970	55.1	58.7	67.0	75.8	77.7	81.8	83.8	82.3	83.6	77.0	63.4	64.6	72.6
1971	62.0	64.1	64.8	72.1	78.2	81.7	83.1	83.3	81.8	79.0	69.5	71.4	74.3
1972	68.9	62.0	68.7	72.7	77.4	82.2	83.2	82.8	81.8	76.8	68.9	66.1	74.3
1973	62.4	59.7	71.1	71.1	78.3	83.1	84.2	81.8	81.4	75.6	70.9	60.4	73.3
1974	71.6	60.5	70.2	71.4	78.0	80.3	80.7	82.0	81.8	72.6	67.6	60.9	73.1
1975	65.8	67.6	67.4	72.4	79.1	80.8	80.5	82.3	80.7	76.6	67.4	60.2	73.4
1976	56.5	63.7	70.4	71.3	76.8	79.7	82.4	81.9	80.5	72.6	63.0	60.1	71.6
1977	50.6	57.4	69.7	70.6	75.2	82.6	82.0	81.5	82.6	72.9	69.6	61.0	71.3
1978	56.8	55.8	66.3	73.4	79.3	82.9	82.6	82.6	81.7	75.0	72.3	66.8	73.0
1979	58.2	58.4	64.6	73.4	75.4	80.7	83.3	82.4	81.3	74.4	68.3	62.6	71.9
1980	60.5	57.2	68.2	70.4	76.4	80.1	83.6	83.6	81.7	75.4	67.1	59.0	71.9
1981	51.3	61.7	64.0	73.1	76.7	83.2	84.1	82.9	80.0	76.4	65.3	60.5	71.6
1982	60.0	68.4	70.4	72.6	75.3	82.0	82.6	82.2	80.2	74.1	70.8	66.7	73.8
1983	58.0	59.9	63.5	68.6	76.4	80.5	83.2	83.5	80.6	76.5	65.8	61.2	71.5
1984	57.8	61.2	64.7	69.2	75.6	78.4	80.7	81.5	78.9	75.4	65.8	66.0	71.3
1985	54.7	62.2	68.4	70.7	77.2	82.4	82.1	82.3	79.8	79.4	73.0	58.8	72.6
1986	59.8	64.3	65.4	69.3	76.7	81.7	82.3	83.3	81.7	77.5	75.8	67.3	73.8
1987	58.8	62.7	65.9	66.8	76.8	83.1	83.5	85.0	82.7	72.2	69.0	64.2	72.6
1988	58.5	60.4	65.5	72.0	75.5	80.3	80.7	82.8	83.9	73.7	70.5	62.4	72.2
1989	66.9	64.5	69.7	71.9	77.9	81.9	83.2	83.3	82.2	75.3	69.0	55.5	73.4
1990	65.8	69.1	69.3	71.5	79.4	81.9	82.8	83.5	82.0	77.1	69.3	66.3	74.8
1991	66.3	64.2	67.7	75.3	79.5	81.1	82.6	83.0	81.7	75.3	65.8	65.5	74.0
1992	59.7	64.8	66.4	69.9	74.9	81.2	84.5	82.3	81.6	73.4	70.4	63.5	72.7
1993	66.3	60.6	64.8	68.3	75.5	81.9	83.9	83.2	81.2	75.1	68.3	58.9	72.3
1994	60.9	66.4	68.2	74.1	77.4	81.3	81.5	81.0	79.2	76.1	71.9	64.9	73.6
1995	58.8	61.1	68.2	72.6	80.2	79.9	82.4	83.0	82.1	77.3	65.6	61.0	72.7
1996	59.1	61.3	62.9	71.6	80.2	81.8	82.9	81.6	80.6	73.8	67.5	62.3	72.1
1997	60.9	67.7	72.3	69.8	76.1	79.9	82.4	82.6	80.5	73.9	66.1	61.4	72.8
1998	62.4	61.7	63.8	71.3	77.7	85.0	84.0	83.5	80.9	77.4	71.2	67.3	73.9
1999	63.9	64.0	64.6	74.2	75.5	80.1	82.8	83.4	80.5	75.1	68.4	61.5	72.8
POR= 57 YRS	60.6	62.3	66.8	71.8	77.3	81.3	81.0	82.6	81.0	74.9	67.7	62.2	72.5

HEATING DEGREE DAYS (base 65°F) 1999 ORLANDO, FL (MCO)

YEAR	JUL	AUG	SEP	OCT	NOV	DEC	JAN	FEB	MAR	APR	MAY	JUN	TOTAL
1970-71	0	0	0	0	120	79	165	115	92	20	0	0	591
1971-72	0	0	0	0	26	9	51	124	24	6	0	0	240
1972-73	0	0	0	0	54	105	160	169	12	9	0	0	509
1973-74	0	0	0	6	13	193	0	173	15	8	0	0	408
1974-75	0	0	0	0	40	163	73	44	57	10	0	0	387
1975-76	0	0	0	0	85	174	278	104	18	1	0	0	660
1976-77	0	0	0	4	118	197	440	218	41	8	0	0	1026
1977-78	0	0	0	6	38	179	275	255	71	0	0	0	824
1978-79	0	0	0	0	0	56	230	214	71	0	0	0	571
1979-80	0	0	0	0	47	119	161	245	61	4	0	0	637
1980-81	0	0	0	1	67	190	416	119	76	1	0	0	870
1981-82	0	0	0	0	75	205	204	21	33	7	0	0	545
1982-83	0	0	0	14	16	94	233	148	105	13	0	0	623
1983-84	0	0	0	0	63	188	252	137	86	18	0	0	744
1984-85	0	0	0	0	68	71	340	146	22	12	0	0	659
1985-86	0	0	0	0	14	228	180	82	105	4	0	0	613
1986-87	0	0	0	0	0	42	216	97	48	66	0	0	469
1987-88	0	0	0	0	39	97	221	169	71	7	0	0	604
1988-89	0	0	0	0	11	135	32	119	59	4	0	0	360
1989-90	0	0	0	21	27	308	71	34	11	5	0	0	477
1990-91	0	0	0	6	14	69	75	88	52	0	0	0	304
1991-92	0	0	0	0	85	76	187	79	51	19	8	0	505
1992-93	0	0	0	0	47	102	73	131	80	12	0	0	445
1993-94	0	0	0	10	45	201	158	61	42	3	0	0	520
1994-95	0	0	0	0	6	88	205	153	24	5	0	0	481
1995-96	0	0	0	0	76	191	208	173	149	12	0	0	809
1996-97	0	0	0	6	38	122	164	43	0	7	0	0	380
1997-98	0	0	0	6	45	170	130	124	127	8	0	0	610
1998-99	0	0	0	0	7	64	109	92	61	12	5	0	350
1999-	0	0	0	3	20	140							

WBAN : 12815

COOLING DEGREE DAYS (base 65°F) 1999 ORLANDO, FL (MCO)

YEAR	JAN	FEB	MAR	APR	MAY	JUN	JUL	AUG	SEP	OCT	NOV	DEC	ANNUAL
1970	19	14	128	330	399	511	586	544	565	380	77	72	3625
1971	77	97	90	238	411	505	569	573	510	440	167	214	3891
1972	181	44	146	243	391	524	570	561	509	374	179	148	3870
1973	88	28	207	198	421	548	602	529	501	341	199	58	3720
1974	213	51	183	207	410	463	492	536	510	241	125	43	3474
1975	105	121	141	237	442	481	489	541	479	366	167	32	3601
1976	18	75	194	196	374	449	549	529	474	247	65	49	3219
1977	1	13	192	182	324	534	537	521	536	257	185	62	3344
1978	26	3	116	259	449	541	550	553	508	321	225	115	3666
1979	26	31	65	260	330	479	575	546	498	299	153	53	3315
1980	27	25	169	172	362	459	586	582	508	331	138	12	3371
1981	0	34	52	253	372	552	602	559	458	359	89	73	3403
1982	56	123	211	241	325	518	550	542	465	303	196	152	3682
1983	22	11	68	129	361	473	573	582	476	362	95	77	3229
1984	37	35	84	151	332	411	490	520	426	331	99	107	3023
1985	27	74	137	191	386	531	539	548	451	454	262	45	3645
1986	25	69	124	139	372	506	543	573	507	392	333	121	3704
1987	32	38	82	127	376	549	582	627	540	230	163	78	3424
1988	26	43	95	223	336	466	496	559	573	275	182	61	3335
1989	101	111	213	216	408	509	573	579	523	346	153	19	3751
1990	102	156	156	206	453	514	559	581	518	388	149	116	3898
1991	121	71	143	315	455	490	553	565	508	326	118	98	3763
1992	28	79	101	175	325	496	612	540	507	265	217	62	3407
1993	120	14	80	118	334	514	591	573	492	331	146	18	3331
1994	39	107	149	284	393	495	517	501	436	352	218	89	3580
1995	19	52	132	241	476	455	546	567	518	391	103	74	3574
1996	33	72	93	217	477	512	561	524	478	283	124	46	3420
1997	46	125	234	155	353	452	546	552	475	290	82	69	3379
1998	55	38	96	206	402	605	599	579	485	390	201	139	3795
1999	82	69	54	297	336	460	560	578	471	321	130	38	3396

SNOWFALL (inches) 1999 ORLANDO, FL (MCO)

YEAR	JUL	AUG	SEP	OCT	NOV	DEC	JAN	FEB	MAR	APR	MAY	JUN	TOTAL
1970-71	0.0	0.0	0.0	0.0	0.0	0.0	0.0	0.0	0.0	0.0	0.0	0.0	0.0
1971-72	0.0	0.0	0.0	0.0	0.0	0.0	0.0	0.0	0.0	0.0	0.0	0.0	0.0
1972-73	0.0	0.0	0.0	0.0	0.0	0.0	0.0	0.0	0.0	0.0	0.0	0.0	0.0
1973-74	0.0	0.0	0.0	0.0	0.0	0.0	0.0	0.0	0.0	0.0	0.0	0.0	0.0
1974-75	0.0	0.0	0.0	0.0	0.0	0.0	0.0	0.0	0.0	0.0	0.0	0.0	0.0
1975-76	0.0	0.0	0.0	0.0	0.0	0.0	0.0	0.0	0.0	0.0	0.0	0.0	0.0
1976-77	0.0	0.0	0.0	0.0	0.0	0.0	T	0.0	0.0	0.0	0.0	0.0	T
1977-78	0.0	0.0	0.0	0.0	0.0	0.0	0.0	0.0	0.0	0.0	0.0	0.0	0.0
1978-79	0.0	0.0	0.0	0.0	0.0	0.0	0.0	0.0	0.0	0.0	0.0	0.0	0.0
1979-80	0.0	0.0	0.0	0.0	0.0	0.0	0.0	0.0	0.0	0.0	0.0	0.0	0.0
1980-81	0.0	0.0	0.0	0.0	0.0	0.0	0.0	0.0	0.0	0.0	0.0	0.0	0.0
1981-82	0.0	0.0	0.0	0.0	0.0	0.0	0.0	0.0	0.0	0.0	0.0	0.0	0.0
1982-83	0.0	0.0	0.0	0.0	0.0	0.0	0.0	0.0	0.0	0.0	0.0	0.0	0.0
1983-84	0.0	0.0	0.0	0.0	0.0	0.0	0.0	0.0	0.0	0.0	0.0	0.0	0.0
1984-85	0.0	0.0	0.0	0.0	0.0	0.0	0.0	0.0	0.0	0.0	0.0	0.0	0.0
1985-86	0.0	0.0	0.0	0.0	0.0	0.0	0.0	0.0	0.0	0.0	0.0	0.0	0.0
1986-87	0.0	0.0	0.0	0.0	0.0	0.0	0.0	0.0	0.0	0.0	0.0	0.0	0.0
1987-88	0.0	0.0	0.0	0.0	0.0	0.0	0.0	0.0	0.0	0.0	0.0	0.0	0.0
1988-89	0.0	0.0	0.0	0.0	0.0	0.0	0.0	0.0	0.0	0.0	0.0	0.0	0.0
1989-90	0.0	T	0.0	0.0	0.0	0.0	0.0	0.0	0.0	0.0	0.0	0.0	T
1990-91	0.0	0.0	0.0	0.0	0.0	0.0	0.0	0.0	0.0	0.0	0.0	0.0	0.0
1991-92	T	0.0	0.0	0.0	0.0	0.0	0.0	0.0	T	T	0.0	0.0	T
1992-93	0.0	0.0	0.0	0.0	0.0	0.0	0.0	0.0	0.0	0.0	0.0	0.0	0.0
1993-94	T	0.0	0.0	0.0	0.0	0.0	0.0	0.0	0.0	0.0	0.0	0.0	T
1994-95	0.0	0.0	0.0	0.0	0.0	0.0	0.0	0.0	0.0	0.0	0.0	0.0	0.0
1995-96	0.0	0.0	0.0	0.0	0.0	0.0	0.0	0.0	0.0	0.0	0.0	0.0	0.0
1996-97	0.0	0.0	0.0	0.0	0.0	0.0	0.0	0.0	0.0	T	T	0.0	T
1997-98	0.0	0.0	0.0	0.0	0.0	0.0	0.0	0.0	0.0	0.0	0.0	0.0	0.0
1998-99	0.0	0.0	0.0	0.0	0.0	0.0	0.0	0.0	0.0	0.0	0.0	0.0	0.0
1999-	0.0	0.0	0.0	0.0	0.0	0.0	0.0	0.0	0.0	0.0	0.0	0.0	0.0
POR= 56 YRS	T	T	0.0	0.0	0.0	0.0	T	0.0	T	T	0.0	0.0	T

WBAN : 12815

REFERENCE NOTES:

<p>PAGE 1: THE TEMPERATURE GRAPH SHOWS NORMAL MAXIMUM AND NORMAL MINIMUM DAILY TEMPERATURES (SOLID CURVES) AND THE ACTUAL DAILY HIGH AND LOW TEMPERATURES (VERTICAL BARS).</p> <p>PAGE 2 AND 3: H/C INDICATES HEATING AND COOLING DEGREE DAYS. RH INDICATES RELATIVE HUMIDITY W/O INDICATES WEATHER AND OBSTRUCTIONS S INDICATES SUNSHINE. PR INDICATES PRESSURE. CLOUDINESS ON PAGE 3 IS THE SUM OF THE CEILOMETER AND SATELLITE DATA NOT TO EXCEED EIGHT EIGHTHS(OKTAS).</p> <p>GENERAL: T INDICATES TRACE PRECIPITATION, AN AMOUNT GREATER THAN ZERO BUT LESS THAN THE LOWEST REPORTABLE VALUE. + INDICATES THE VALUE ALSO OCCURS ON EARLIER DATES. BLANK ENTRIES DENOTE MISSING OR UNREPORTED DATA. NORMALS ARE 30-YEAR AVERAGES (1961 - 1990). ASOS INDICATES AUTOMATED SURFACE OBSERVING SYSTEM. PM INDICATES THE LAST DAY OF THE PREVIOUS MONTH. POR (PERIOD OF RECORD) BEGINS WITH THE JANUARY DATA MONTH AND IS THE NUMBER OF YEARS USED TO COMPUTE THE MEAN. INDIVIDUAL MONTHS WITHIN THE POR MAY BE MISSING. WHEN THE POR FOR A NORMAL IS LESS THAN 30 YEARS, THE NORMAL IS PROVISIONAL AND IS BASED ON THE NUMBER OF YEARS INDICATED. 0.* OR * INDICATES THE VALUE OR MEAN-DAYS-WITH IS BETWEEN 0.00 AND 0.05. CLOUDINESS FOR ASOS STATIONS DIFFERS FROM THE NON-ASOS OBSERVATION TAKEN BY A HUMAN OBSERVER. ASOS STATION CLOUDINESS IS BASED ON TIME-AVERAGED CEILOMETER DATA FOR CLOUDS AT OR BELOW 12,000 FEET AND ON SATELLITE DATA FOR CLOUDS ABOVE 12,000 FEET. THE NUMBER OF DAYS WITH CLEAR, PARTLY CLOUDY, AND CLOUDY CONDITIONS FOR ASOS STATIONS IS THE SUM OF THE CEILOMETER AND SATELLITE DATA FOR THE SUNRISE TO SUNSET PERIOD.</p>	<p>GENERAL CONTINUED: CLEAR INDICATES 0 - 2 OKTAS, PARTLY CLOUDY INDICATES 3 - 6 OKTAS, AND CLOUDY INDICATES 7 OR 8 OKTAS. WHEN AT LEAST ONE OF THE ELEMENTS (CEILOMETER OR SATELLITE) IS MISSING, THE DAILY CLOUDINESS IS NOT COMPUTED. WIND DIRECTION IS RECORDED IN TENS OF DEGREES (2 DIGITS) CLOCKWISE FROM TRUE NORTH. "00" INDICATES CALM. "36" INDICATES TRUE NORTH. RESULTANT WIND IS THE VECTOR AVERAGE OF THE SPEED AND DIRECTION. AVERAGE TEMPERATURE IS THE SUM OF THE MEAN DAILY MAXIMUM AND MINIMUM TEMPERATURE DIVIDED BY 2. SNOWFALL DATA COMPRISE ALL FORMS OF FROZEN PRECIPITATION, INCLUDING HAIL. A HEATING (COOLING) DEGREE DAY IS THE DIFFERENCE BETWEEN THE AVERAGE DAILY TEMPERATURE AND 65° F. DRY BULB IS THE TEMPERATURE OF THE AMBIENT AIR. DEW POINT IS THE TEMPERATURE TO WHICH THE AIR MUST BE COOLED TO ACHIEVE 100 PERCENT RELATIVE HUMIDITY. WET BULB IS THE TEMPERATURE THE AIR WOULD HAVE IF THE MOISTURE CONTENT WAS INCREASED TO 100 PERCENT RELATIVE HUMIDITY.</p> <p>ON JULY 1, 1996, THE NATIONAL WEATHER SERVICE BEGAN USING THE "METAR" OBSERVATION CODE THAT WAS ALREADY EMPLOYED BY MOST OTHER NATIONS OF THE WORLD. THE MOST NOTICEABLE DIFFERENCE IN THIS ANNUAL PUBLICATION WILL BE THE CHANGE IN UNITS FROM TENTHS TO EIGHTHS(OKTAS) FOR REPORTING THE AMOUNT OF SKY COVER.</p>
---	---

1999  
ORLANDO,  
FLORIDA (MCO)

Orlando is located in the central section of the Florida peninsula, surrounded by many lakes. Relative humidities remain high the year-round, with values near 90 percent at night and 40 to 50 percent in the afternoon. On some winter days, the humidity may drop to 20 percent.

The rainy season extends from June through September, sometimes through October when tropical storms are near. During this period, scattered afternoon thunderstorms are an almost daily occurrence, and these bring a drop in temperature to make the climate bearable. Summer temperatures above 95 degrees are rather rare. There is usually a breeze which contributes to the general comfort.

During the winter months rainfall is light. While temperatures, on infrequent occasion, may drop at night to near freezing, they rise rapidly during the day and, in brilliant sunshine, afternoons are pleasant.

Frozen precipitation in the form of snowflakes, snow pellets, or sleet is rare. However, hail is occasionally reported during thunderstorms.

Hurricanes are usually not considered a great threat to Orlando, since, to reach this area, they must pass over a substantial stretch of land and, in so doing, lose much of their punch. Sustained hurricane winds of 75 mph or higher rarely occur. Orlando, being inland, is relatively safe from high water, although heavy rains sometimes briefly flood sections of the city.

STATION LOCATION

ORLANDO, FLORIDA

LOCATION	OCCUPIED FROM	OCCUPIED TO	AIRLINE DISTANCES AND DIRECTIONS FROM PREVIOUS LOCATION	LATITUDE NORTH	LONGITUDE WEST	ELEVATION ABOVE											REMARKS					
						SEA LEVEL	GROUND															
							WIND	EMERGENCY	REFLECTOR	SURVEY	THUNDER	RAIN	WET	8	H	A		E				
COOPERATIVE - - NOTE: For period January 1892 through June 15, 1925 refer to previous editions.																						
946 Bradshaw Terrace	6/16/25	10/21/28	2000 ft. E	28°32'	81°23'	80		5														
117 Annie Street	10/22/28	11/11/31	400 ft. S	28°32'	81°23'	80		4														
Fern Creek and Harding Avenue	11/11/31	5/1934	1 mi. S	28°31'	81°22'	95		4														
1537 Clay Street Winter Park	5/1934	9/16/36	3.75 mi. NNW	28°35'	81°22'	93																
933 Bradshaw Terrace	9/17/36	12/1942	3 mi. S	28°32'	81°23'	80		5														
AIRPORT Terminal Building Municipal Airport 2 miles east of Post Office	1/01/43	1/03/51	2.6 mi. NE	28°33'	81°20'	106	a40	4	4				3	3								Observations were commenced at the airport by an airway observer on 4/1/29 and at a later date taken over by CAA. Weather Bureau effective 2/15/44.
Administration Building Herndon Airport *	1/03/51	1/31/74	400 ft. WNW	28°33'	81°20'	g108	a20	b16	c16				d13	e13	f4							* Name adopted 3/18/61. a - 41 feet to 2/16/51 and 53 feet to 1/9/60. b - 6 feet to 4/6/60 and 18 feet to 12/1/63. c - 5 feet to 4/6/60 and 17 feet to 12/1/63. d - 3 feet to 3/11/52; 4 feet to 4/6/60 and 14 feet to 12/1/63. e - 3 feet to 4/6/60 and 14 feet to 12/1/63. f - Commissioned 12/1/63 on field 1700 feet east of thermometer. g - 106 feet to 12/1/63.
Weather Service Office Orlando Jetport + at McCoy	1/31/74	9/19/84	8 mi. S	28°26'	81°19'	96	j20	NA 15	NA h5 n5	NA	NA k3 n3	NA h3 n3	NA h3 n3	16	NA A10 m4	NA	NA	NA	NA	NA	NA	A - AN/TMQ-11 on field site. h - Effective 5/7/74. i - Effective 1/26/74. j - Effective 5/20/74. k - Added 3/18/76. m - Hygrothermometer commissioned 3/25/76. n - Relocated 7/22/77.
+ International Airport eff. 11/26/76																						
Weather Service Bldg. Orlando International Airport	9/19/84	07/01/96	Unknown	28°26'	81°19'	96	33	NA	6	NA	5	5	5	6	NA							Moved from 9501 Benford Road to 5390 Bear Road p - Type change 5/30/85
International Airport	07/01/96	Present	NA	28°26'	81°20'	96																ASOS Commissioned 07/01/96

SUBSCRIPTION: Price and ordering information available through: National Climatic Data Center, Federal Building, Asheville, North Carolina 28801. INQUIRIES/COMMENTS CALL: (828) 271-4800

National Climatic Data Center  
151 Patton Avenue, Rm 120  
Asheville NC 28801-5001

OFFICIAL BUSINESS  
PENALTY FOR PRIVATE USE \$300  
FORWARD AND ADDRESS CORRECTION

FIRST CLASS  
POSTAGE & FEES PAID  
United States Department of Commerce  
NOAA Permit No. G - 19