

1999

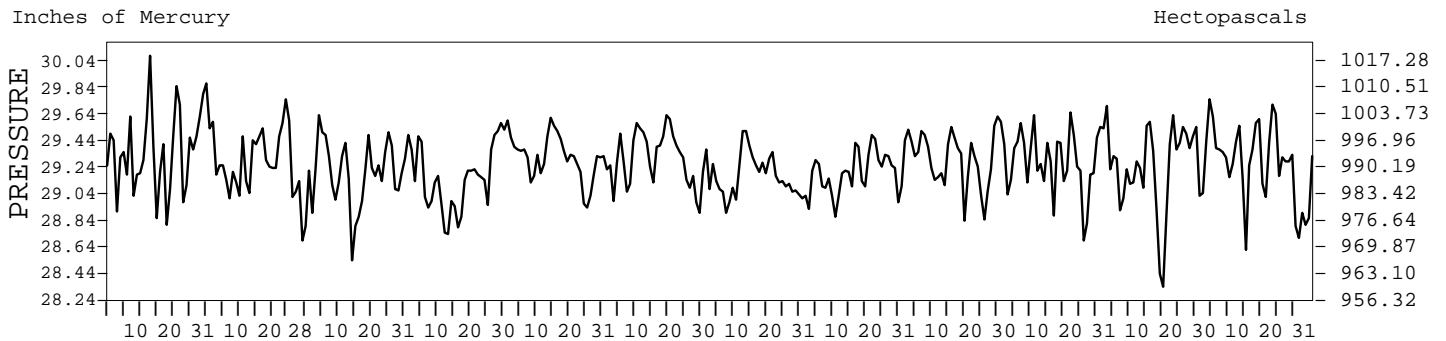
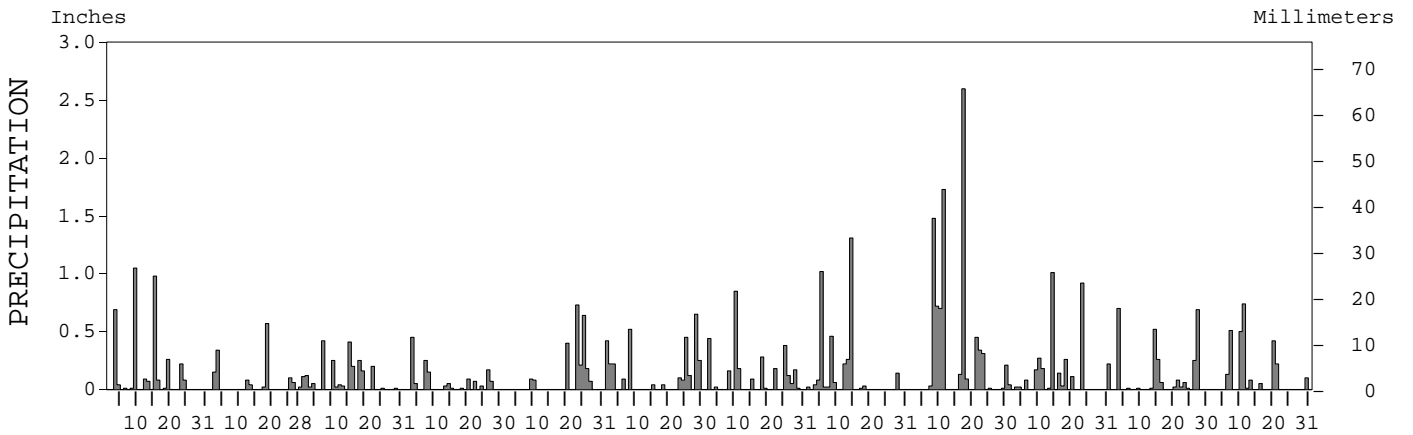
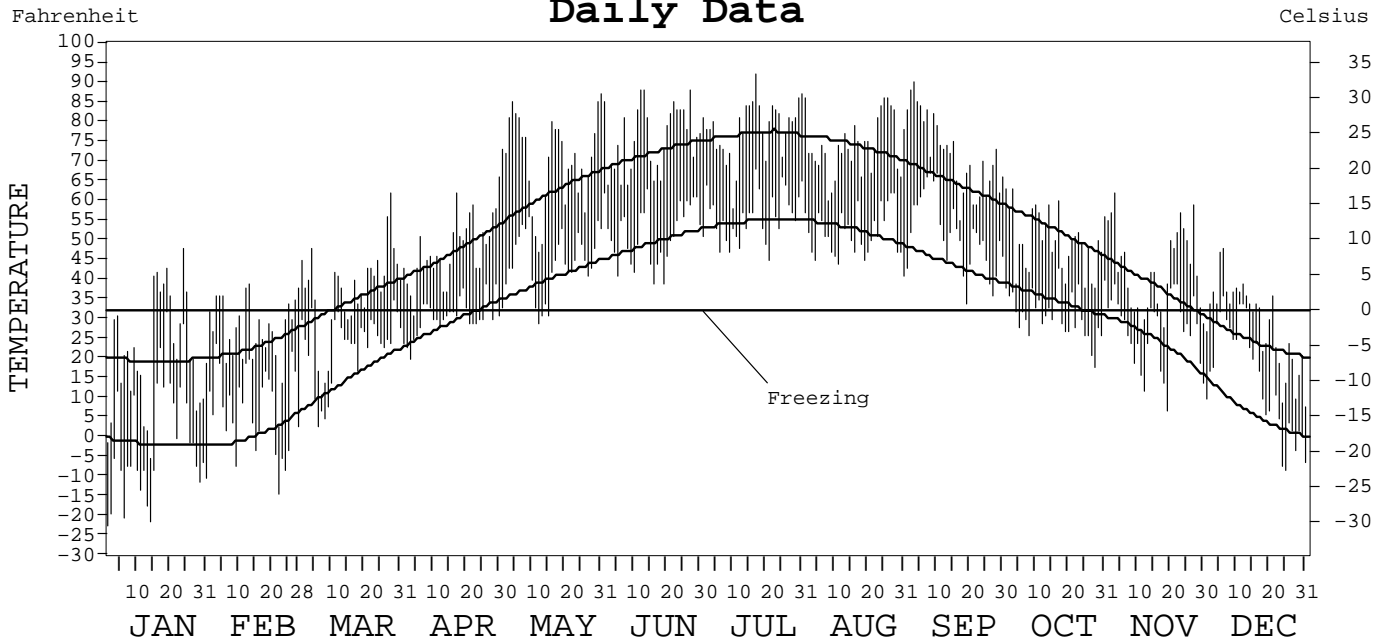
LOCAL CLIMATOLOGICAL DATA  
ANNUAL SUMMARY WITH COMPARATIVE DATA



ISSN 0198-2354

CARIBOU,  
MAINE (CAR)

Daily Data



I CERTIFY THAT THIS IS AN OFFICIAL PUBLICATION OF THE NATIONAL OCEANIC AND ATMOSPHERIC ADMINISTRATION, AND IS COMPILED FROM RECORDS ON FILE AT THE NATIONAL CLIMATIC DATA CENTER.

*Thomas R. Karl*

NATIONAL OCEANIC AND ATMOSPHERIC ADMINISTRATION  
 NATIONAL ENVIRONMENTAL AND INFORMATION SERVICE  
 NATIONAL ENVIRONMENTAL SATELLITE, DATA, AND INFORMATION SERVICE  
 NATIONAL CLIMATIC DATA CENTER  
 NATIONAL CLIMATIC DATA CENTER  
 DIRECTOR NATIONAL CLIMATIC DATA CENTER  
 ASHEVILLE, NORTH CAROLINA

# METEOROLOGICAL DATA FOR 1999

## CARIBOU, ME (CAR)

LATITUDE: 46° 52' 01" N      LONGITUDE: 68° 01' 58" W      ELEVATION (FT): GRND: 628      BARO: 628      TIME ZONE: EASTERN (UTC + 5)      WBAN: 14607

ELEMENT		JAN	FEB	MAR	APR	MAY	JUN	JUL	AUG	SEP	OCT	NOV	DEC	YEAR	
TEMPERATURE °F	MEAN DAILY MAXIMUM	21.6	27.5	37.2	47.7	70.3	76.0	78.3	74.0	71.9	49.9	42.3	28.8	52.1	
	HIGHEST DAILY MAXIMUM	48	39	62	66	87	88	92	86	90	63	62	48	92	
	DATE OF OCCURRENCE	24	13	28	30	31	27+	17	26+	03	03+	03	06	JUL 17	
	MEAN DAILY MINIMUM	-6	7.4	23.1	30.6	44.1	51.7	56.0	51.7	51.5	31.2	27.0	15.5	32.4	
	LOWEST DAILY MINIMUM	-22	-14	3	20	29	39	45	41	34	18	7	-8	-22	
	DATE OF OCCURRENCE	01	22	06	03	12	19+	21	31	19	28	19	25	JAN 01	
	AVERAGE DRY BULB	10.5	17.5	30.2	39.2	57.2	63.9	67.2	62.9	61.7	40.6	34.7	22.2	42.3	
	MEAN WET BULB	9.7	16.7	27.5	34.2	50.6	58.6	61.6	57.9	57.3	37.6	32.9	20.9	38.8	
	MEAN DEW POINT	3.7	10.7	21.7	26.9	43.3	54.1	57.9	54.0	54.2	33.2	28.8	17.0	33.8	
	NUMBER OF DAYS WITH:														
	MAXIMUM ≥ 90°	0	0	0	0	0	0	1	0	1	0	0	0	2	
	MAXIMUM ≤ 32°	23	20	8	1	0	0	0	0	0	0	6	15	73	
	MINIMUM ≤ 32°	31	28	29	21	3	0	0	0	0	19	21	27	179	
	MINIMUM ≤ 0°	20	7	0	0	0	0	0	0	0	0	0	4	31	
H/C	HEATING DEGREE DAYS	1681	1323	1073	767	248	103	40	105	163	750	903	1320	8476	
	COOLING DEGREE DAYS	0	0	0	0	12	76	115	48	70	0	0	0	321	
RH	MEAN (PERCENT)	73	72	72	66	64	72	76	75	79	77	79	81	74	
	HOUR 01 LST	78	76	78	75	80	87	90	89	91	85	84	86	83	
	HOUR 07 LST	78	81	80	74	75	79	83	85	91	88	87	85	82	
	HOUR 13 LST	65	63	66	54	47	54	56	57	62	63	70	71	61	
	HOUR 19 LST	71	68	69	63	57	66	72	71	77	74	80	81	71	
S	PERCENT POSSIBLE SUNSHINE														
W/O	NUMBER OF DAYS WITH:														
	HEAVY FOG (VISBY ≤ 1/4 MI)	7	4	5	0	2	3	5	5	4	1	5	2	43	
	THUNDERSTORMS	0	0	2	0	3	6	7	5	2	1	0	0	26	
CLOUDINESS	SUNRISE-SUNSET: (OKTAS)														
	CEILOMETER (≤ 12,000 FT.)														
	SATELLITE (> 12,000 FT.)														
	MIDNIGHT-MIDNIGHT: (OKTAS)														
	CEILOMETER (≤ 12,000 FT.)														
	SATELLITE (> 12,000 FT.)														
NUMBER OF DAYS WITH:															
CLEAR															
PARTLY CLOUDY															
CLOUDY															
PR	MEAN STATION PRESS. (IN.)	29.37	29.31	29.17	29.16	29.33	29.31	29.18	29.22	29.30	29.31	29.25	29.25	29.26	
	MEAN SEA-LEVEL PRESS. (IN.)	30.10	30.02	29.87	29.85	30.01	29.98	29.85	29.90	29.98	30.00	29.94			
WINDS	RESULTANT SPEED (MPH)	3.7	5.1	4.7	8.0	2.0	2.3	1.8	2.7	1.2	3.5	3.8	3.2	3.0	
	RES. DIR. (TENS OF DEGS.)	26	32	32	32	27	23	24	28	24	27	26	29	29	
	MEAN SPEED (MPH)	7.6	8.8	11.0	10.4	7.4	6.1	6.1	5.7	6.6	8.2	8.5	7.6	7.8	
	PREVAIL. DIR. (TENS OF DEGS.)	25	33	33	32	17	19	24	23	16	16	31	26	31	
	MAXIMUM 2-MINUTE WIND:														
	SPEED (MPH)	29	26	37	31	26	23	30	28	25	32	33	24	37	
	DIR. (TENS OF DEGS.)	26	36	33	32	33	31	31	31	33	31	31	30	33	
	DATE OF OCCURRENCE	25	26	16	24+	13+	07+	18	03	18+	14	17	18+	MAR 16	
	MAXIMUM 5-SECOND WIND:														
	SPEED (MPH)	39	33	46	40	34	32	35	34	43	39	39	35	46	
DIR. (TENS OF DEGS.)	26	36	30	34	30	24	35	31	13	31	30	26	30		
DATE OF OCCURRENCE	25	26	16	13	12	25	19	09	30	14	17	17	MAR 16		
PRECIPITATION	WATER EQUIVALENT:														
	TOTAL (IN.)	3.59	1.38	2.30	1.43	2.40	3.20	2.94	3.69	8.81	3.48	2.70	2.76	38.68	
	GREATEST 24-HOUR (IN.)	1.05	0.59	0.42	0.50	0.86	0.66	0.85	1.57	2.60	1.01	0.90	0.98	2.60	
	DATE OF OCCURRENCE	09	17-18	07	03-04	23-24	28-29	10	13-14	17	14	26-27	10-11	SEP 17	
	NUMBER OF DAYS WITH:														
	PRECIPITATION ≥ 0.01	13	9	16	13	8	13	14	14	14	15	14	10	153	
PRECIPITATION ≥ 0.10	5	4	9	4	5	9	9	6	10	9	5	7	82		
PRECIPITATION ≥ 1.00	1	0	0	0	0	0	0	2	3	1	0	0	7		
SNOWFALL	SNOW, ICE PELLETS, HAIL:														
	TOTAL (IN.)	36.7	18.5	30.3	8.8	T	0.0	0.0	0.0	0.0	0.2	4.1	6.7	105.3	
	GREATEST 24-HOUR (IN.)	15.5	10.3	8.6	5.8	T	0.0	0.0	0.0	0.0	0.2	2.2	2.8	15.5	
	DATE OF OCCURRENCE	09-10	17-18	07	03	13+					14	15	30	JAN 09-10	
	MAXIMUM SNOW DEPTH (IN.)	30	20	21	7	0	0	0	0	0	0	2	6	30	
	DATE OF OCCURRENCE	14	28+	11	05							16	31	JAN 14	
NUMBER OF DAYS WITH:															
SNOWFALL ≥ 1.0	6	5	6	2	0	0	0	0	0	0	1	3	23		

# NORMALS, MEANS, AND EXTREMES

## CARIBOU, ME (CAR)

LATITUDE: 46° 52' 01" N      LONGITUDE: 68° 01' 58" W      ELEVATION (FT): GRND: 628      BARO: 628      TIME ZONE: EASTERN (UTC + 5)      WBAN: 14607

ELEMENT		POR	JAN	FEB	MAR	APR	MAY	JUN	JUL	AUG	SEP	OCT	NOV	DEC	YEAR
TEMPERATURE °F	NORMAL DAILY MAXIMUM	30	19.4	23.0	34.3	46.7	61.7	71.9	76.5	73.6	64.0	52.0	37.6	24.0	48.7
	MEAN DAILY MAXIMUM	52	19.7	23.1	33.5	46.5	61.6	71.2	75.9	73.6	64.2	51.9	38.0	24.9	48.7
	HIGHEST DAILY MAXIMUM	60	53	59	73	86	96	96	95	95	91	79	68	58	96
	YEAR OF OCCURRENCE		1995	1994	1962	1990	1977	1944	1991	1975	1945	1968	1956	1950	MAY 1977
	MEAN OF EXTREME MAXS.	52	41.5	40.8	51.1	66.0	81.4	87.0	88.6	86.5	80.8	70.1	57.3	44.3	66.3
	NORMAL DAILY MINIMUM	30	-1.6	.7	14.9	29.0	40.1	49.1	54.5	52.1	43.2	34.4	23.7	5.5	28.8
	MEAN DAILY MINIMUM	52	1.0	2.8	14.9	29.0	40.1	49.5	54.6	52.1	43.5	34.4	24.2	8.5	29.6
	LOWEST DAILY MINIMUM	60	-33	-41	-21	-2	18	30	36	34	23	14	-8	-31	-41
	YEAR OF OCCURRENCE		1995	1955	1992	1964	1974	1958	1969	1982	1980	1972	1995	1989	FEB 1955
	MEAN OF EXTREME MINS.	52	-22.7	-19.4	-7.8	13.8	27.9	36.5	43.6	39.7	29.9	21.1	5.9	-14.9	12.8
	NORMAL DRY BULB	30	8.9	11.9	24.6	37.9	50.9	60.5	65.5	62.8	53.7	43.2	30.7	14.8	38.8
	MEAN DRY BULB	52	10.4	13.0	24.1	37.7	50.8	60.4	65.3	62.8	53.8	43.2	31.1	16.7	39.1
	MEAN WET BULB	15	10.4	13.0	22.9	35.0	46.8	56.0	57.1	59.7	51.2	40.4	27.4	16.9	36.4
	MEAN DEW POINT	15	4.6	5.8	14.5	24.9	36.4	46.9	52.8	55.3	46.8	35.5	23.0	12.2	29.9
	NORMAL NO. DAYS WITH:														
MAXIMUM ≥ 90°	30	0.0	0.0	0.0	0.0	0.2	0.4	1.0	0.4	0.0	0.0	0.0	0.0	2.0	
MAXIMUM ≤ 32°	30	26.0	22.3	12.4	1.7	*	0.0	0.0	0.0	0.0	0.3	9.5	23.5	95.7	
MINIMUM ≤ 32°	30	30.6	27.5	28.3	20.6	5.2	*	0.0	0.0	2.7	13.6	24.8	30.4	183.7	
MINIMUM ≤ 0°	30	16.6	12.7	4.5	*	0.0	0.0	0.0	0.0	0.0	0.0	0.3	10.3	44.4	
H/C	NORMAL HEATING DEG. DAYS	30	1739	1487	1252	813	437	143	61	115	343	676	1029	1556	9651
	NORMAL COOLING DEG. DAYS	30	0	0	0	0	0	8	76	47	0	0	0	0	131
RH	NORMAL (PERCENT)	30	70	71	70	74	68	68	77	79	82	82	84	79	75
	HOUR 01 LST	30	74	74	76	82	80	82	90	91	92	89	88	82	83
	HOUR 07 LST	30	75	74	76	75	74	78	83	86	87	86	85	80	80
	HOUR 13 LST	30	65	61	59	56	53	55	59	60	61	63	71	70	61
	HOUR 19 LST	30	71	68	65	63	60	63	69	73	75	74	79	77	70
S	PERCENT POSSIBLE SUNSHINE														
W/O	MEAN NO. DAYS WITH:														
	HEAVY FOG (VISBY ≤ 1/4 MI)	29	2.3	1.7	2.0	2.1	1.0	1.6	2.5	2.3	3.1	2.1	3.6	2.7	27.0
	THUNDERSTORMS	29	0.0	0.0	0.2	0.5	1.9	4.4	6.6	4.0	1.2	1.0	0.0	0.0	19.8
CLOUDINESS	MEAN:														
	SUNRISE-SUNSET (OKTAS)	51	5.4	5.4	5.4	5.8	5.8	5.8	5.5	5.3	5.3	5.6	6.3	5.7	5.6
	MIDNIGHT-MIDNIGHT (OKTAS)														
	MEAN NO. DAYS WITH:														
CLEAR	56	7.0	6.2	7.0	5.1	4.1	3.3	3.0	4.5	5.3	4.8	2.8	5.5	58.6	
PARTLY CLOUDY	56	6.9	6.3	6.8	6.8	9.0	9.8	12.7	11.2	8.9	7.7	6.3	6.5	98.9	
CLOUDY	56	17.1	15.8	17.3	18.0	17.9	16.9	14.7	14.6	15.1	18.1	20.4	18.5	204.4	
PR	MEAN STATION PRESSURE (IN)	13	29.22	29.23	29.21	29.20	29.20	29.21	29.21	29.30	29.28	29.30	29.22	29.20	29.23
	MEAN SEA-LEVEL PRES. (IN)	16	29.97	29.97	29.96	29.93	29.94	29.89	29.91	29.97	30.01	30.03	30.00	30.00	29.96
WINDS	MEAN SPEED (MPH)	19	11.7	11.4	12.3	11.5	10.8	9.8	9.1	8.5	9.5	10.3	10.5	10.7	10.5
	PREVAIL. DIR (TENS OF DEGS)	4	32	32	32	32	32	18	18	24	18	32	32	32	32
	MAXIMUM 2-MINUTE:														
	SPEED (MPH)	5	36	28	37	33	37	30	30	28	26	40	33	39	40
	DIR. (TENS OF DEGS)		31	31	33	31	33	32	31	31	30	30	31	31	30
	YEAR OF OCCURRENCE		1998	1996	1999	1996	1994	1997	1999	1999	1998	1996	1999	1994	OCT 1996
	MAXIMUM 5-SECOND:														
SPEED (MPH)	3	41	33	46	41	37	36	35	37	43	52	43	47	52	
DIR. (TENS OF DEGS)		26	36	30	35	23	35	35	32	13	30	18	31	30	
YEAR OF OCCURRENCE		1997	1999	1999	1997	1997	1997	1999	1998	1999	1996	1996	1996	OCT 1996	
PRECIPITATION	NORMAL (IN)	30	2.42	1.92	2.43	2.45	3.07	2.91	4.01	4.07	3.45	3.10	3.55	3.22	36.60
	MAXIMUM MONTHLY (IN)	60	5.60	4.13	5.13	5.26	6.27	7.11	6.83	12.09	8.81	8.73	8.15	7.97	12.09
	YEAR OF OCCURRENCE		1995	1955	1953	1973	1947	1940	1957	1981	1999	1990	1983	1973	AUG 1981
	MINIMUM MONTHLY (IN)	60	0.12	0.26	0.66	0.54	0.47	0.88	0.96	0.93	0.86	0.63	0.45	0.74	0.12
	YEAR OF OCCURRENCE		1944	1978	1965	1967	1982	1983	1991	1957	1968	1955	1939	1963	JAN 1944
	MAXIMUM IN 24 HOURS (IN)	60	1.81	1.38	1.70	2.11	2.25	2.37	2.92	6.89	6.23	4.07	2.27	2.80	6.89
	YEAR OF OCCURRENCE		1995	1988	1984	1958	1948	1957	1957	1981	1954	1970	1983	1973	AUG 1981
	NORMAL NO. DAYS WITH:														
PRECIPITATION ≥ 0.01	30	14.8	11.3	12.8	12.6	13.5	12.8	13.5	13.3	12.5	12.6	14.7	14.8	159.2	
PRECIPITATION ≥ 1.00	30	0.2	0.1	0.2	0.2	0.3	0.2	1.0	0.7	0.6	0.5	0.5	0.4	4.9	
SNOWFALL	NORMAL (IN)	30	25.3	18.8	19.3	10.1	1.0	T	0.0	0.0	T	1.7	13.1	26.3	115.6
	MAXIMUM MONTHLY (IN)	59	44.5	41.0	47.1	36.4	10.9	T	T	T	2.5	12.1	34.9	59.9	59.9
	YEAR OF OCCURRENCE		1994	1960	1955	1982	1967	1991	1992	1995	1991	1963	1974	1972	DEC 1972
	MAXIMUM IN 24 HOURS (IN)	59	19.0	21.2	28.6	21.1	5.8	T	T	T	2.5	9.4	21.0	19.7	28.6
	YEAR OF OCCURRENCE		1994	1995	1984	1982	1967	1991	1992	1995	1991	1963	1986	1989	MAR 1984
	MAXIMUM SNOW DEPTH (IN)	51	57	62	51	42	4	0	0	0	1	9	28	39	62
	YEAR OF OCCURRENCE		1977	1977	1977	1982	1966				1991	1963	1974	1978	FEB 1977
NORMAL NO. DAYS WITH:															
SNOWFALL ≥ 1.0	30	5.9	5.0	4.7	2.8	0.3	0.0	0.0	0.0	0.0	0.5	3.2	6.7	29.1	

PRECIPITATION (inches) 1999 CARIBOU, ME (CAR)

YEAR	JAN	FEB	MAR	APR	MAY	JUN	JUL	AUG	SEP	OCT	NOV	DEC	ANNUAL
1970	0.31	2.09	2.25	3.56	4.26	3.25	2.54	3.18	5.46	6.35	1.85	2.58	37.68
1971	1.71	2.16	3.20	2.09	2.06	2.62	2.79	3.39	2.62	3.43	3.31	2.46	31.84
1972	1.32	2.38	4.72	1.09	3.69	4.97	4.21	5.07	3.88	4.03	2.76	5.28	43.40
1973	2.60	2.89	2.48	5.26	5.03	2.13	4.62	2.95	2.62	1.47	2.63	7.97	42.65
1974	1.89	1.37	3.56	3.81	3.61	2.82	3.39	3.98	3.40	1.15	4.16	2.05	35.19
1975	2.71	1.66	1.94	1.95	3.04	2.40	4.28	1.39	2.98	1.51	3.40	4.05	31.31
1976	3.51	3.43	2.57	3.31	5.11	2.85	6.74	6.17	2.52	5.46	2.33	4.63	48.63
1977	3.42	2.99	2.36	1.83	0.74	6.44	1.75	7.86	3.54	5.30	1.63	3.59	41.45
1978	5.10	0.26	2.69	2.33	1.98	3.70	5.56	1.95	2.74	1.94	1.84	3.04	33.13
1979	4.49	2.22	3.70	3.08	4.27	3.39	3.36	4.98	4.68	1.68	2.90	3.05	41.80
1980	1.55	0.82	3.15	2.57	2.05	2.19	5.42	2.28	4.06	2.51	3.21	2.74	32.55
1981	1.68	2.39	3.43	2.17	3.18	4.15	2.62	12.09	2.38	6.28	2.51	3.81	46.69
1982	2.46	2.17	2.72	4.01	0.47	3.08	4.25	4.78	3.70	1.61	5.50	2.51	37.26
1983	2.95	1.77	3.84	4.20	5.28	0.88	5.92	3.86	2.70	1.81	8.15	5.01	46.37
1984	2.10	3.06	2.55	1.74	5.72	5.90	4.52	1.65	1.54	1.81	2.01	3.00	35.60
1985	0.99	2.77	1.87	1.80	2.64	2.89	5.05	1.74	2.30	1.42	3.50	2.24	29.21
1986	4.86	1.13	2.32	2.29	2.13	1.96	4.21	4.97	3.58	1.47	3.96	1.66	34.54
1987	2.29	0.33	1.24	1.75	2.46	3.59	3.16	1.82	4.37	2.18	2.33	2.56	28.08
1988	2.79	2.65	1.23	1.99	1.84	2.37	2.28	5.65	1.82	3.09	4.10	1.00	30.81
1989	1.88	1.43	1.40	2.24	4.13	2.29	2.63	5.41	3.52	1.62	3.88	2.35	32.78
1990	3.36	1.84	1.16	2.28	3.53	4.56	4.15	3.23	3.78	8.73	4.22	5.60	46.44
1991	2.06	1.13	4.71	2.62	3.51	1.98	0.96	6.72	3.45	4.46	1.61	2.10	35.31
1992	3.76	2.68	1.87	2.57	1.83	4.58	4.49	6.28	1.51	3.52	1.60	1.58	36.27
1993	2.18	2.10	1.72	3.48	3.58	4.54	2.48	3.57	5.11	4.31	2.94	3.99	40.00
1994	3.68	1.39	2.44	3.24	4.75	4.64	4.64	2.82	3.16	0.88	3.75	3.01	38.40
1995	5.60	2.70	2.23	2.12	2.46	1.18	1.48	2.94	1.90	5.13	4.88	1.79	34.41
1996	4.05	2.69	1.74	3.59	3.52	3.42	6.32	2.66	3.81	3.41	1.49	3.72	40.42
1997	3.60	2.52	2.47	1.68	5.10	4.37	2.64	4.12	2.67	1.31	2.08	2.81	35.37
1998	4.08	2.62	3.51	2.23	3.61	3.22	5.35	2.29	3.22	2.22	2.10	1.57	36.02
1999	3.59	1.38	2.30	1.43	2.40	3.20	2.94	3.69	8.81	3.48	2.70	2.76	38.68
POR= 59 YRS	2.50	2.07	2.41	2.52	3.07	3.42	3.92	3.85	3.39	3.16	3.22	2.89	36.42

WBAN : 14607

AVERAGE TEMPERATURE (°F) 1999 CARIBOU, ME (CAR)

YEAR	JAN	FEB	MAR	APR	MAY	JUN	JUL	AUG	SEP	OCT	NOV	DEC	ANNUAL
1970	4.9	13.1	25.3	38.2	50.6	61.7	69.7	66.0	53.9	47.4	34.6	10.1	39.6
1971	5.8	14.3	25.4	36.1	51.6	59.3	64.0	61.3	56.2	46.4	27.9	11.7	38.3
1972	8.2	6.4	18.3	34.7	52.4	61.5	64.7	60.5	54.2	38.3	27.1	7.6	36.2
1973	9.7	12.6	29.6	37.9	48.9	63.0	68.6	66.4	52.9	43.9	27.5	23.9	40.4
1974	6.7	10.8	21.0	36.8	45.2	62.7	64.7	64.3	52.7	39.3	31.4	18.5	37.8
1975	9.6	11.5	23.1	35.1	53.7	61.4	68.6	64.4	54.5	42.3	32.8	10.9	39.0
1976	5.3	13.5	22.7	38.4	51.2	64.0	63.7	62.6	51.5	39.2	25.6	7.9	37.1
1977	6.0	12.9	32.3	36.4	53.3	58.8	65.2	64.2	51.2	43.5	33.3	16.9	39.5
1978	9.9	12.5	20.8	34.9	55.3	60.8	66.2	64.9	50.4	41.6	27.7	16.3	38.4
1979	15.4	10.4	31.8	41.2	54.6	63.0	68.6	61.9	54.4	45.2	35.8	19.2	41.8
1980	13.3	11.9	24.0	42.6	51.2	59.4	64.8	66.0	50.8	40.9	30.1	9.0	38.7
1981	5.6	27.6	28.0	39.5	54.2	61.2	66.3	64.5	53.1	40.4	31.9	23.1	41.3
1982	4.0	11.3	24.5	35.1	53.6	60.3	66.4	58.7	54.9	44.4	32.7	22.1	39.0
1983	14.9	15.3	27.0	41.1	48.9	61.9	64.5	64.3	57.2	43.6	32.2	14.5	40.5
1984	6.7	22.4	19.3	39.8	49.2	59.2	65.8	65.5	51.7	44.5	33.4	18.4	39.7
1985	6.0	16.2	23.5	35.3	49.5	58.2	66.0	62.2	56.1	43.8	28.3	12.1	38.1
1986	11.8	12.2	24.4	42.8	52.2	56.9	62.6	60.7	50.5	41.2	25.9	16.2	38.1
1987	9.9	12.5	28.0	43.9	50.6	60.3	65.8	61.1	54.5	44.2	29.0	18.7	39.9
1988	12.1	13.6	23.1	39.4	54.6	58.5	67.4	64.4	52.4	40.5	33.5	13.8	39.4
1989	12.3	10.4	19.5	36.7	56.7	60.1	64.7	63.5	55.4	45.0	27.6	3.5	38.0
1990	17.3	11.7	24.7	39.6	49.0	62.9	66.2	66.6	53.5	44.7	31.0	20.5	40.6
1991	7.1	15.1	27.0	39.6	52.5	61.4	65.8	65.3	52.1	44.8	32.8	13.5	39.8
1992	10.4	10.9	20.2	36.4	53.2	60.2	60.3	63.7	56.2	41.1	29.3	19.6	38.5
1993	8.6	4.2	23.3	39.9	51.2	59.9	64.8	65.8	54.1	39.2	29.7	19.4	38.3
1994	-7	7.7	25.3	37.0	48.7	63.6	68.1	61.6	53.5	46.1	33.9	20.1	38.7
1995	15.5	9.1	25.5	34.3	50.8	63.0	69.1	65.1	51.8	47.8	28.2	14.7	39.6
1996	11.2	13.5	23.7	38.8	48.7	62.1	64.6	63.7	55.0	42.2	29.1	26.2	39.9
1997	10.6	12.6	18.8	35.5	47.3	60.3	65.3	61.5	54.2	41.4	29.2	15.9	37.7
1998	13.8	19.7	27.4	40.1	56.2	61.2	66.3	64.1	55.5	43.4	30.0	21.4	41.6
1999	10.5	17.5	30.2	39.2	57.2	63.9	67.2	62.9	61.7	40.6	34.7	22.2	42.3
POR= 60 YRS	10.1	13.0	23.9	37.4	50.7	60.1	65.2	62.9	53.8	43.2	30.9	16.2	39.0

HEATING DEGREE DAYS (base 65°F) 1999 CARIBOU, ME (CAR)

YEAR	JUL	AUG	SEP	OCT	NOV	DEC	JAN	FEB	MAR	APR	MAY	JUN	TOTAL
1970-71	17	80	328	540	905	1697	1833	1415	1224	860	411	199	9509
1971-72	59	141	274	569	1106	1648	1759	1698	1440	903	405	134	10136
1972-73	55	145	326	818	1130	1775	1711	1464	1092	807	491	122	9936
1973-74	9	44	373	649	1117	1270	1810	1512	1359	837	609	81	9670
1974-75	40	66	369	789	998	1433	1717	1498	1295	890	343	158	9596
1975-76	19	93	310	700	960	1674	1849	1489	1302	793	426	123	9738
1976-77	84	132	405	793	1175	1765	1828	1453	1002	850	406	203	10096
1977-78	56	93	408	657	944	1489	1702	1467	1364	894	333	156	9563
1978-79	53	86	434	717	1114	1503	1534	1527	1018	708	326	104	9124
1979-80	34	146	327	612	870	1413	1593	1534	1265	664	420	200	9078
1980-81	71	41	425	740	1042	1733	1839	1040	1141	757	333	125	9287
1981-82	37	77	355	757	984	1292	1891	1499	1251	890	355	145	9533
1982-83	60	199	310	632	961	1325	1544	1387	1171	712	493	148	8942
1983-84	75	78	257	656	978	1562	1804	1229	1412	748	493	199	9491
1984-85	38	57	396	630	940	1441	1822	1363	1281	884	472	198	9522
1985-86	43	118	272	650	1094	1636	1646	1473	1255	660	394	246	9487
1986-87	105	147	427	733	1167	1505	1704	1465	1140	629	442	142	9606
1987-88	79	152	314	641	1071	1430	1636	1485	1289	760	321	232	9410
1988-89	47	114	373	752	939	1583	1627	1524	1402	841	257	181	9640
1989-90	66	101	303	613	1116	1905	1471	1490	1241	759	490	107	9662
1990-91	57	47	337	623	1014	1370	1791	1392	1172	755	383	158	9099
1991-92	55	66	383	619	959	1595	1691	1564	1382	852	381	163	9710
1992-93	145	73	273	732	1064	1402	1747	1699	1284	748	423	175	9765
1993-94	73	53	327	791	1051	1407	2040	1601	1222	832	500	107	10004
1994-95	24	124	337	578	926	1388	1529	1565	1218	912	433	131	9165
1995-96	12	74	388	522	1098	1551	1666	1490	1271	782	496	116	9466
1996-97	48	83	304	702	1070	1196	1678	1462	1427	879	544	161	9554
1997-98	62	123	318	723	1068	1516	1579	1263	1159	740	269	151	8971
1998-99	42	69	275	660	1045	1346	1681	1323	1073	767	248	103	8632
1999-	40	105	163	750	903	1320							

WBAN : 14607

COOLING DEGREE DAYS (base 65°F) 1999 CARIBOU, ME (CAR)

YEAR	JAN	FEB	MAR	APR	MAY	JUN	JUL	AUG	SEP	OCT	NOV	DEC	ANNUAL
1970	0	0	0	0	2	47	164	117	1	0	0	0	331
1971	0	0	0	0	2	36	38	33	16	0	0	0	125
1972	0	0	0	0	21	35	51	11	9	0	0	0	127
1973	0	0	0	0	0	67	126	97	17	0	0	0	307
1974	0	0	0	0	2	21	38	50	5	0	0	0	116
1975	0	0	0	0	0	54	137	80	0	0	0	0	271
1976	0	0	0	0	6	104	52	65	4	0	0	0	231
1977	0	0	0	0	52	24	69	77	1	0	0	0	223
1978	0	0	0	0	38	35	97	93	1	0	0	0	264
1979	0	0	0	0	8	50	153	57	16	6	0	0	290
1980	0	0	0	0	0	37	71	78	8	0	0	0	194
1981	0	0	0	0	3	17	83	68	4	0	0	0	175
1982	0	0	0	0	11	10	110	9	12	0	0	0	152
1983	0	0	0	0	0	62	65	66	32	1	0	0	226
1984	0	0	0	0	9	33	72	79	0	0	0	0	193
1985	0	0	0	0	0	0	82	40	10	0	0	0	132
1986	0	0	0	0	5	10	39	20	1	0	0	0	75
1987	0	0	0	0	2	10	111	38	8	0	0	0	169
1988	0	0	0	0	6	45	131	103	1	0	0	0	286
1989	0	0	0	0	9	37	64	63	19	0	0	0	192
1990	0	0	0	2	0	51	102	106	0	0	0	0	261
1991	0	0	0	0	2	55	89	85	4	0	0	0	235
1992	0	0	0	0	23	26	5	40	12	0	0	0	106
1993	0	0	0	0	0	31	72	83	6	0	0	0	192
1994	0	0	0	0	4	71	128	26	0	0	0	0	229
1995	0	0	0	0	0	76	147	82	0	0	0	0	305
1996	0	0	0	0	0	36	40	51	11	0	0	0	138
1997	0	0	0	0	0	30	77	21	1	0	0	0	129
1998	0	0	0	0	3	43	91	44	0	0	0	0	181
1999	0	0	0	0	12	76	115	48	70	0	0	0	321

SNOWFALL (inches) 1999 CARIBOU, ME (CAR)

YEAR	JUL	AUG	SEP	OCT	NOV	DEC	JAN	FEB	MAR	APR	MAY	JUN	TOTAL
1970-71	0.0	0.0	0.0	7.6	11.0	32.4	16.6	16.3	38.6	12.2	0.0	T	134.7
1971-72	0.0	0.0	0.0	T	18.9	26.3	15.7	25.1	41.4	9.4	T	0.0	136.8
1972-73	0.0	0.0	0.0	1.7	13.3	59.9	20.3	27.8	7.8	22.2	0.0	0.0	153.0
1973-74	0.0	0.0	T	T	14.5	23.4	20.7	11.9	21.6	13.1	4.2	0.0	109.4
1974-75	0.0	0.0	T	0.4	34.9	12.6	31.2	9.8	18.2	15.1	0.0	0.0	122.2
1975-76	0.0	0.0	0.0	T	10.4	36.4	30.1	30.2	23.3	1.5	0.5	0.0	132.4
1976-77	0.0	0.0	0.0	3.7	10.2	31.9	39.1	34.4	16.0	10.6	T	0.0	145.9
1977-78	0.0	0.0	0.0	0.0	5.5	37.7	41.4	4.4	13.7	15.3	0.8	0.0	118.8
1978-79	0.0	0.0	0.0	T	9.2	40.3	32.1	18.1	8.6	14.9	T	0.0	123.2
1979-80	0.0	0.0	0.0	0.7	3.0	18.0	7.9	12.6	27.6	0.8	0.0	T	70.6
1980-81	0.0	0.0	T	0.2	12.0	28.9	35.2	8.6	36.4	1.4	0.2	0.0	122.9
1981-82	0.0	0.0	T	2.6	4.8	34.3	30.9	25.1	23.7	36.4	1.0	0.0	158.8
1982-83	0.0	0.0	0.0	T	14.6	4.0	22.8	22.8	13.9	4.8	T	0.0	82.9
1983-84	0.0	0.0	0.0	T	21.0	26.6	27.3	20.1	35.4	3.9	0.2	0.0	134.5
1984-85	0.0	0.0	0.0	0.8	3.8	30.7	10.5	26.8	11.9	5.0	1.3	0.0	90.8
1985-86	0.0	0.0	0.0	T	14.8	18.3	30.0	11.9	18.6	11.3	T	0.0	104.9
1986-87	0.0	0.0	T	0.4	28.1	8.5	26.4	4.1	12.3	5.2	T	0.0	85.0
1987-88	0.0	0.0	T	T	5.2	22.6	32.1	28.2	3.9	6.4	T	0.0	98.4
1988-89	0.0	0.0	0.0	1.2	13.8	11.5	18.4	16.6	11.9	9.4	0.0	0.0	82.8
1989-90	0.0	0.0	T	0.1	14.3	38.0	28.5	18.3	7.6	10.7	0.6	T	118.1
1990-91	0.0	0.0	0.0	T	12.0	22.6	21.5	12.2	24.0	2.5	0.0	T	94.8
1991-92	0.0	0.0	2.5	T	7.1	19.4	14.8	38.6	4.2	7.4	T	0.0	94.0
1992-93	T	0.0	T	0.4	5.3	15.9	5.6	22.8	23.4	7.1	T	0.0	80.5
1993-94	0.0	0.0	0.0	0.2	10.5	13.9	44.5	20.3	28.8	9.5	T	0.0	127.7
1994-95	0.0	0.0	T	T	9.8	25.9		40.9	15.7	7.9	1.1	0.0	
1995-96	0.0	T	0.0	T	8.9	25.1	18.4	22.7	16.5	13.1	5.7	0.0	110.4
1996-97	0.0	0.0	0.0	0.8	8.5	14.4	35.5	30.2	28.9	11.7	0.9	0.0	130.9
1997-98	0.0	0.0	0.0	8.9	9.6	37.3	39.9	8.8	11.0	8.5	T	0.0	124.0
1998-99	0.0	0.0	0.0	T	12.6	21.9	36.7	18.5	30.3	8.8	T	0.0	128.8
1999-	0.0	0.0	0.0	0.2	4.1	6.7							
POR= 59 YRS	T	T	0.0	1.7	11.9	23.0	23.9	21.4	19.2	8.5	0.9	T	110.5

WBAN : 14607

REFERENCE NOTES:

<p>PAGE 1: THE TEMPERATURE GRAPH SHOWS NORMAL MAXIMUM AND NORMAL MINIMUM DAILY TEMPERATURES (SOLID CURVES) AND THE ACTUAL DAILY HIGH AND LOW TEMPERATURES (VERTICAL BARS).</p> <p>PAGE 2 AND 3: H/C INDICATES HEATING AND COOLING DEGREE DAYS. RH INDICATES RELATIVE HUMIDITY W/O INDICATES WEATHER AND OBSTRUCTIONS S INDICATES SUNSHINE. PR INDICATES PRESSURE. CLOUDINESS ON PAGE 3 IS THE SUM OF THE CEILOMETER AND SATELLITE DATA NOT TO EXCEED EIGHT EIGHTHS(OKTAS).</p> <p>GENERAL: T INDICATES TRACE PRECIPITATION, AN AMOUNT GREATER THAN ZERO BUT LESS THAN THE LOWEST REPORTABLE VALUE. + INDICATES THE VALUE ALSO OCCURS ON EARLIER DATES. BLANK ENTRIES DENOTE MISSING OR UNREPORTED DATA. NORMALS ARE 30-YEAR AVERAGES (1961 - 1990). ASOS INDICATES AUTOMATED SURFACE OBSERVING SYSTEM. PM INDICATES THE LAST DAY OF THE PREVIOUS MONTH. POR (PERIOD OF RECORD) BEGINS WITH THE JANUARY DATA MONTH AND IS THE NUMBER OF YEARS USED TO COMPUTE THE MEAN. INDIVIDUAL MONTHS WITHIN THE POR MAY BE MISSING. WHEN THE POR FOR A NORMAL IS LESS THAN 30 YEARS, THE NORMAL IS PROVISIONAL AND IS BASED ON THE NUMBER OF YEARS INDICATED. 0.* OR * INDICATES THE VALUE OR MEAN-DAYS-WITH IS BETWEEN 0.00 AND 0.05. CLOUDINESS FOR ASOS STATIONS DIFFERS FROM THE NON-ASOS OBSERVATION TAKEN BY A HUMAN OBSERVER. ASOS STATION CLOUDINESS IS BASED ON TIME-AVERAGED CEILOMETER DATA FOR CLOUDS AT OR BELOW 12,000 FEET AND ON SATELLITE DATA FOR CLOUDS ABOVE 12,000 FEET. THE NUMBER OF DAYS WITH CLEAR, PARTLY CLOUDY, AND CLOUDY CONDITIONS FOR ASOS STATIONS IS THE SUM OF THE CEILOMETER AND SATELLITE DATA FOR THE SUNRISE TO SUNSET PERIOD.</p>	<p>GENERAL CONTINUED: CLEAR INDICATES 0 - 2 OKTAS, PARTLY CLOUDY INDICATES 3 - 6 OKTAS, AND CLOUDY INDICATES 7 OR 8 OKTAS. WHEN AT LEAST ONE OF THE ELEMENTS (CEILOMETER OR SATELLITE) IS MISSING, THE DAILY CLOUDINESS IS NOT COMPUTED. WIND DIRECTION IS RECORDED IN TENS OF DEGREES (2 DIGITS) CLOCKWISE FROM TRUE NORTH. "00" INDICATES CALM. "36" INDICATES TRUE NORTH. RESULTANT WIND IS THE VECTOR AVERAGE OF THE SPEED AND DIRECTION. AVERAGE TEMPERATURE IS THE SUM OF THE MEAN DAILY MAXIMUM AND MINIMUM TEMPERATURE DIVIDED BY 2. SNOWFALL DATA COMPRISE ALL FORMS OF FROZEN PRECIPITATION, INCLUDING HAIL. A HEATING (COOLING) DEGREE DAY IS THE DIFFERENCE BETWEEN THE AVERAGE DAILY TEMPERATURE AND 65° F. DRY BULB IS THE TEMPERATURE OF THE AMBIENT AIR. DEW POINT IS THE TEMPERATURE TO WHICH THE AIR MUST BE COOLED TO ACHIEVE 100 PERCENT RELATIVE HUMIDITY. WET BULB IS THE TEMPERATURE THE AIR WOULD HAVE IF THE MOISTURE CONTENT WAS INCREASED TO 100 PERCENT RELATIVE HUMIDITY.</p> <p>ON JULY 1, 1996, THE NATIONAL WEATHER SERVICE BEGAN USING THE "METAR" OBSERVATION CODE THAT WAS ALREADY EMPLOYED BY MOST OTHER NATIONS OF THE WORLD. THE MOST NOTICEABLE DIFFERENCE IN THIS ANNUAL PUBLICATION WILL BE THE CHANGE IN UNITS FROM TENTHS TO EIGHTHS(OKTAS) FOR REPORTING THE AMOUNT OF SKY COVER.</p>
---	---

# 1999 CARIBOU, MAINE (CAR)

The Caribou Municipal Airport is located in Aroostook County, the largest and northernmost county in the state. The airport lies on top of high land which is about on the same level as most of the surrounding gently rolling hills. The Aroostook River, which runs about 1 mile to the east and southeast of the station, has little effect on the local weather. Even though Caribou is located only 150 miles from the Atlantic coast, its climate can be justly classed as a severe typical continental type. Winters are particularly long and windy, and seasonal snowfalls averaging over 100 inches are not unusual. While the extreme low temperatures may be less severe than one might expect, temperatures of zero or lower normally occur over 40 times per year. A study of heating degree day data will show the outstanding part that cold weather plays here.

Summers are cool and generally favored with abundant rainfall, which is one of the most important factors in the high yield of the potato and grain crops throughout the county. Our location high up in the St. Lawrence Valley allows Aroostook County to come under the influence of the Summer Polar Front, resulting in practically no dry periods of more than 3 or 4 days in the growing season. The growing season at Caribou averages more than 120 days, with the average last freeze in the spring in mid-May and the average first freeze in autumn in late September.

Autumn climate is nearly ideal, with mostly sunny warm days and crisp cool nights predominating. Aroostook County, even with its relatively short growing season, provides profitable farming. The principal crops are potatoes, peas, a variety of grains, and some hardy vegetables.

Probably unknown to many victims of hay fever and similar afflictions, the immediate Caribou area offers sparkling visibility and relatively pollen-free air in the late summer months. This latter condition is principally due to the extremely high degree of cultivation of all available land.

STATION LOCATION

CARIBOU, MAINE

LOCATION	OCCUPIED FROM	OCCUPIED TO	AIRLINE DISTANCES AND DIRECTIONS FROM PREVIOUS LOCATION	LATITUDE NORTH	LONGITUDE WEST	ELEVATION ABOVE											AUTOMATED STATION	* Type	REMARKS
						SEA LEVEL	GROUND												
							WIND	WIND	WIND	WIND	WIND	WIND	WIND	WIND	WIND	WIND			
Hangar Building Municipal Airport	8/4/37	3/29/44	NA	46° 52'	68° 01'	620	45	5	5	NA	NA	NA	3	NA	a - Effective 1/5/40. b - Installed 1/5/40. Changed from CAA to WBAS 1/5/40.				
Aroostook Inn Municipal Airport	4/1/44	9/12/45	400 ft. NE	46° 52'	68° 01'	620	30	6	5	NA	NA	3	3	NA	NA	Hangar building and office at previous location was destroyed by fire.			
Hangar Building (new) Municipal Airport	9/12/45	1/9/67	400 ft. SW	46° 52'	68° 01'	624	33	6	5	NA	6	7	7	NA	NA	c - Minor adjustment 1/7/47. d - Minor adjustment 2/11/50. e - Minor adjustment 8/15/52. f - Minor adjustment 5/15/58.			
Weather Bureau Building Municipal Airport + Weather Service Bldg. (Effective 1970)	1/9/67	08/01/96	250 ft. ESE	46° 52'	68° 01'	624	g31	g6	g5	NA	6	7	5	NA	NA	g - Not moved 1/9/67. h - Commissioned 7' N of thermometer site 1/19/67. i - Moved 150' ESE and type change 7/25/85.			
Municipal Airport	08/01/96	Present	NA	46°52'	68°02'	628									S	ASOS Commissioned 08/01/96			

SUBSCRIPTION: Price and ordering information available through: National Climatic Data Center, Federal Building, Asheville, North Carolina 28801. INQUIRIES/COMMENTS CALL: (828) 271-4800

National Climatic Data Center  
151 Patton Avenue, Rm 120  
Asheville NC 28801-5001

OFFICIAL BUSINESS  
PENALTY FOR PRIVATE USE \$300  
FORWARD AND ADDRESS CORRECTION

FIRST CLASS  
POSTAGE & FEES PAID  
United States Department of Commerce  
NOAA Permit No. G - 19