

1999

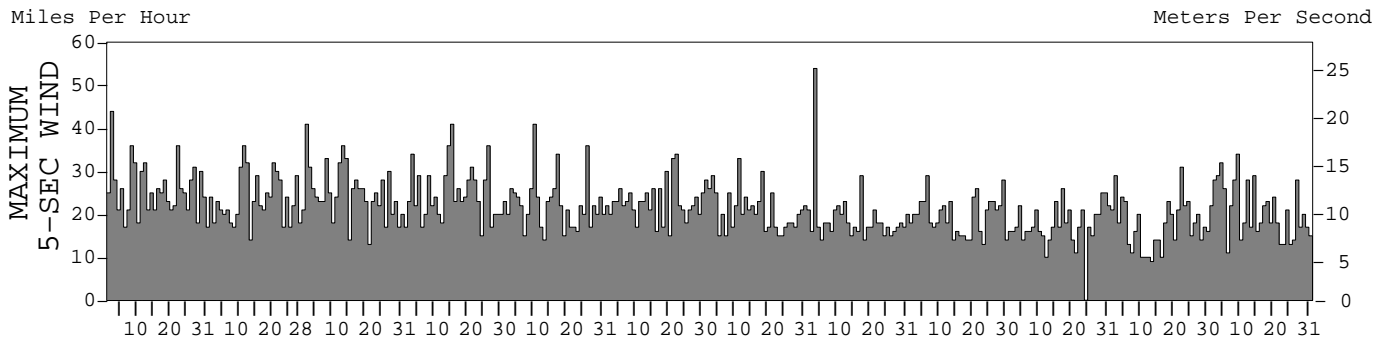
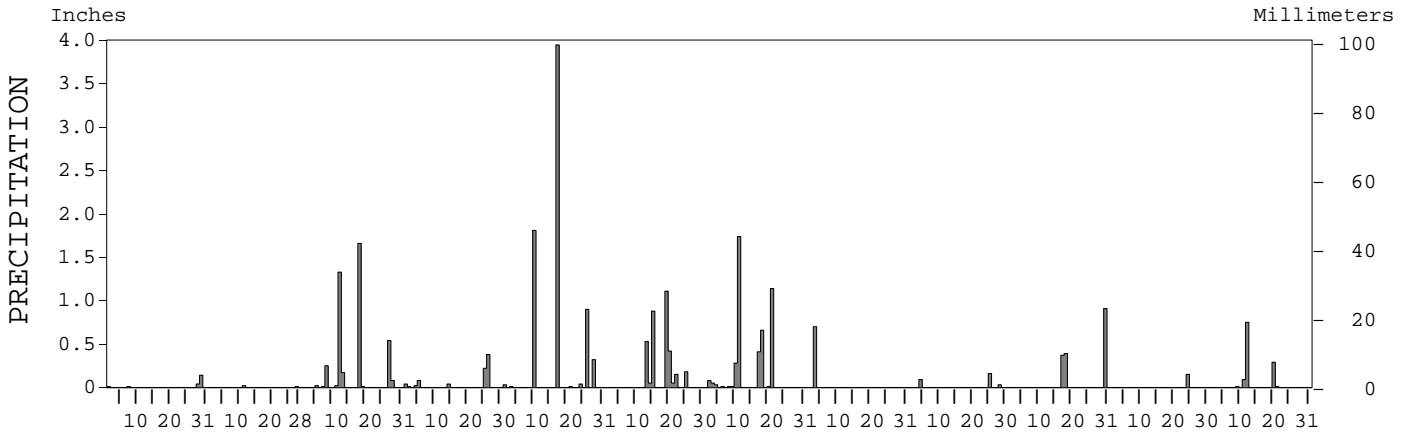
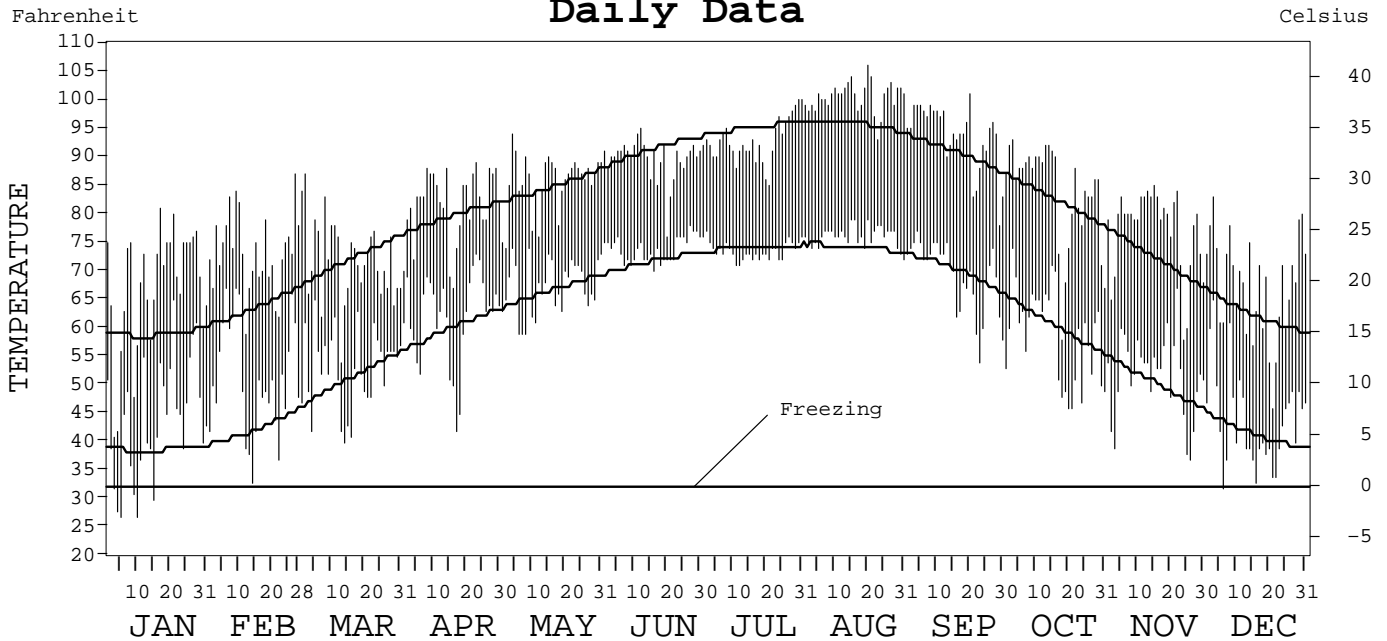
LOCAL CLIMATOLOGICAL DATA ANNUAL SUMMARY WITH COMPARATIVE DATA



ISSN 0198-4926

AUSTIN/CITY, TEXAS (ATT)

Daily Data



I CERTIFY THAT THIS IS AN OFFICIAL PUBLICATION OF THE NATIONAL OCEANIC AND ATMOSPHERIC ADMINISTRATION, AND IS COMPILED FROM RECORDS ON FILE AT THE NATIONAL CLIMATIC DATA CENTER.

NATIONAL OCEANIC AND ATMOSPHERIC ADMINISTRATION
NATIONAL ENVIRONMENTAL AND INFORMATION SERVICE
NATIONAL ENVIRONMENTAL AND INFORMATION SERVICE
NATIONAL CLIMATIC DATA CENTER
NATIONAL CLIMATIC DATA CENTER
DIRECTOR NATIONAL CLIMATIC DATA CENTER
ASHEVILLE, NORTH CAROLINA

METEOROLOGICAL DATA FOR 1999

AUSTIN/CITY, TX (ATT)

LATITUDE: 30° 19' 0" N LONGITUDE: 97° 46' 0" W ELEVATION (FT): GRND: 673 BARO: 673 TIME ZONE: CENTRAL (UTC + 6) WBAN: 13958

ELEMENT		JAN	FEB	MAR	APR	MAY	JUN	JUL	AUG	SEP	OCT	NOV	DEC	YEAR	
TEMPERATURE °F	MEAN DAILY MAXIMUM	67.3	73.3	71.9	81.6	85.6	89.6	92.8	100.5	93.7	83.7	77.2	67.5	82.1	
	HIGHEST DAILY MAXIMUM	81	87	87	89	94	95	100	106	101	93	85	83	106	
	DATE OF OCCURRENCE	17	27	02	23	04	12	31+	20	20	03	15	03	AUG 20	
	MEAN DAILY MINIMUM	43.8	51.3	52.8	61.9	67.3	73.8	73.6	76.0	69.1	58.7	51.6	43.8	60.3	
	LOWEST DAILY MINIMUM	27	33	40	42	59	70	71	72	54	46	37	32	27	
	DATE OF OCCURRENCE	10+	14	14	17	06	16	12+	31	23	21+	26	06	JAN 10+	
	AVERAGE DRY BULB	55.6	62.3	62.4	71.8	76.5	81.7	83.2	88.3	81.4	71.2	64.4	55.7	71.2	
	MEAN WET BULB	50.1	54.2	56.7	64.5		74.6			68.6		56.1	47.9		
	MEAN DEW POINT	44.3	46.2	51.8	59.1		71.8			61.3		49.2	40.2		
	NUMBER OF DAYS WITH:														
	MAXIMUM ≥ 90°	0	0	0	0	4	21	26	31	25	9	0	0	0	116
	MAXIMUM ≤ 32°	0	0	0	0	0	0	0	0	0	0	0	0	0	0
	MINIMUM ≤ 32°	6	0	0	0	0	0	0	0	0	0	0	1	7	
MINIMUM ≤ 0°	0	0	0	0	0	0	0	0	0	0	0	0	0		
H/C	HEATING DEGREE DAYS	303	126	118	21	0	0	0	0	41	80	304	993		
	COOLING DEGREE DAYS	18	56	39	231	361	509	572	729	500	242	70	18	3345	
RH	MEAN (PERCENT)	70	63	73	69	73	77	75	58	56	59	63	62	66	
	HOUR 00 LST	77	70	80	78	83	88	86	67	63	67	73	67	75	
	HOUR 06 LST	84	77	85	85	87	93	94	83	80	83	84	78	84	
	HOUR 12 LST	61	55	65	59	64	64	58	42	41	47	48	52	55	
	HOUR 18 LST	55	46	60	54	59	66	61	37	38	42	45	50	51	
S	PERCENT POSSIBLE SUNSHINE	64	54	43	61										
W/O	NUMBER OF DAYS WITH:														
	HEAVY FOG (VISBY ≤ 1/4 MI)	3	1	1	0	0	1	3	0	0	0	5	1	15	
	THUNDERSTORMS	1	0	4	1	5	0	0	0	0	0	0	0	11	
CLOUDINESS	SUNRISE-SUNSET: (OKTAS)														
	CEILOMETER (≤ 12,000 FT.)														
	SATELLITE (> 12,000 FT.)														
	MIDNIGHT-MIDNIGHT: (OKTAS)														
	CEILOMETER (≤ 12,000 FT.)														
	SATELLITE (> 12,000 FT.)														
NUMBER OF DAYS WITH:															
CLEAR															
PARTLY CLOUDY															
CLOUDY															
PR	MEAN STATION PRESS. (IN.)	29.41	29.43	29.35	29.27		29.24		29.23	29.24		29.44	29.41		
	MEAN SEA-LEVEL PRESS. (IN.)	30.07	30.08	30.00	29.91		29.93			29.94		30.16	30.14		
WINDS	RESULTANT SPEED (MPH)	1.3	1.3	2.3	1.9		0.4		0.9	1.0		0.2	1.1		
	RES. DIR. (TENS OF DEGS.)	23	16	04	15		12		08	09		17	28		
	MEAN SPEED (MPH)	8.0	7.8	9.1	9.1	7.6	7.4	5.7	4.6	5.8	5.1	4.7	6.2	6.8	
	PREVAIL. DIR. (TENS OF DEGS.)	18	16	01	16	16	16	16	17	16	36	16	30	16	
	MAXIMUM 2-MINUTE WIND:														
	SPEED (MPH)	31	29	31	31	33	26	28	33	22	18	24	25	33	
	DIR. (TENS OF DEGS.)	02	31	33	33	01	18	26	09	16	33	17	30	09	
	DATE OF OCCURRENCE	08	11	02	15	10	22+	11	03	06	17	22	09	AUG 03	
	MAXIMUM 5-SECOND WIND:														
	SPEED (MPH)	44	36	41	41	41	34	33	54	29	26	31	34	54	
DIR. (TENS OF DEGS.)	33	32	31	32	01	19	26	09	16	33	16	27	09		
DATE OF OCCURRENCE	02	11	02	15	10	22	11	03	06	17	22	09	AUG 03		
PRECIPITATION	WATER EQUIVALENT:														
	TOTAL (IN.)	0.20	0.03	4.09	0.79	7.07	3.37	4.43	0.70	0.28	1.67	0.15	1.15	23.93	
	GREATEST 24-HOUR (IN.)	0.18	0.02	1.66	0.40	3.95	1.49	2.01	0.70	0.16	0.91	0.15	0.83	3.95	
	DATE OF OCCURRENCE	28-29	11	18	25-26	17	19-20	10-11	03	25	30	24	11-12	MAY 17	
	NUMBER OF DAYS WITH:														
	PRECIPITATION ≥ 0.01	4	2	10	7	8	8	12	1	3	3	1	5	64	
PRECIPITATION ≥ 0.10	1	0	5	2	4	6	5	1	1	3	1	2	31		
PRECIPITATION ≥ 1.00	0	0	2	0	2	1	2	0	0	0	0	0	7		
SNOWFALL	SNOW, ICE PELLETS, HAIL:														
	TOTAL (IN.)														
	GREATEST 24-HOUR (IN.)														
	DATE OF OCCURRENCE														
	MAXIMUM SNOW DEPTH (IN.)	0	0	0	0	0									
	DATE OF OCCURRENCE														
NUMBER OF DAYS WITH:															
SNOWFALL ≥ 1.0															

NORMALS, MEANS, AND EXTREMES

AUSTIN/CITY, TX (ATT)

LATITUDE: 30° 19' 0" N LONGITUDE: 97° 46' 0" W ELEVATION (FT): GRND: 673 BARO: 673 TIME ZONE: CENTRAL (UTC + 6) WBAN: 13958

ELEMENT		POR	JAN	FEB	MAR	APR	MAY	JUN	JUL	AUG	SEP	OCT	NOV	DEC	YEAR
TEMPERATURE °F	NORMAL DAILY MAXIMUM	30	58.9	63.4	71.9	79.4	84.7	91.1	95.0	95.5	90.5	82.1	71.8	62.0	78.9
	MEAN DAILY MAXIMUM	52	59.9	64.3	71.6	79.1	85.1	91.4	95.3	95.7	89.7	81.3	70.0	62.9	78.9
	HIGHEST DAILY MAXIMUM	58	90	99	98	98	102	108	109	106	104	98	91	90	109
	YEAR OF OCCURRENCE		1971	1996	1971	1982	1998	1998	1954	1999	1985	1991	1951	1955	JUL 1954
	MEAN OF EXTREME MAXS.	52	79.2	82.5	87.0	90.5	93.7	97.5	100.6	101.2	98.0	92.4	84.9	80.0	90.6
	NORMAL DAILY MINIMUM	30	38.6	42.1	51.1	59.8	66.5	71.5	73.9	73.9	69.8	60.0	49.9	41.2	58.2
	MEAN DAILY MINIMUM	52	39.6	43.4	49.9	58.1	65.6	71.6	74.1	73.7	69.1	59.4	48.9	42.0	58.0
	LOWEST DAILY MINIMUM	58	-2	7	18	35	43	53	64	61	41	30	20	4	-2
	YEAR OF OCCURRENCE		1949	1951	1948	1973	1954	1970	1970	1942	1993	1976	1989	JAN 1949	
	MEAN OF EXTREME MINS.	52	22.7	26.6	32.1	42.3	53.3	62.9	69.2	68.6	56.7	44.3	32.7	25.5	44.7
	NORMAL DRY BULB	30	48.8	52.8	61.5	69.6	75.6	81.3	84.5	84.8	80.2	71.1	60.9	51.6	68.6
	MEAN DRY BULB	52	49.7	53.9	60.6	68.7	75.3	81.6	84.7	84.8	79.4	70.3	59.5	52.5	68.4
	MEAN WET BULB	16	45.6	49.0	54.4	61.0	68.6	73.5	74.2	74.2	70.2	63.1	54.3	47.6	61.3
	MEAN DEW POINT	16	38.9	42.0	47.6	54.8	64.8	69.8	69.9	69.6	65.5	58.0	48.8	41.6	55.9
	NORMAL NO. DAYS WITH:														
MAXIMUM ≥ 90°	30	*	0.1	0.6	1.7	6.7	20.8	27.8	28.2	17.0	3.7	0.0	0.0	106.6	
MAXIMUM ≤ 32°	30	0.6	0.2	0.0	0.0	0.0	0.0	0.0	0.0	0.0	0.0	0.0	0.3	1.1	
MINIMUM ≤ 32°	30	8.7	4.6	1.0	0.0	0.0	0.0	0.0	0.0	0.0	0.0	0.8	5.8	20.9	
MINIMUM ≤ 0°	30	0.0	0.0	0.0	0.0	0.0	0.0	0.0	0.0	0.0	0.0	0.0	0.0	0.0	
H/C	NORMAL HEATING DEG. DAYS	30	514	353	175	28	0	0	0	0	0	17	175	426	1688
	NORMAL COOLING DEG. DAYS	30	12	11	66	166	329	489	605	614	456	206	52	10	3016
RH	NORMAL (PERCENT)	30	67	66	64	66	71	70	65	64	68	67	69	68	67
	HOUR 00 LST	30	72	72	71	74	81	80	75	73	78	75	76	73	75
	HOUR 06 LST	30	78	80	80	82	88	89	88	86	86	84	82	80	84
	HOUR 12 LST	30	60	59	56	57	60	56	51	50	55	55	58	59	56
	HOUR 18 LST	30	57	52	49	52	57	53	47	46	54	54	58	58	53
S	PERCENT POSSIBLE SUNSHINE	57	49	51	55	54	56	69	75	74	66	64	55	49	60
W/O	MEAN NO. DAYS WITH:														
	HEAVY FOG (VISBY ≤ 1/4 MI)	59	4.3	2.9	2.5	1.2	0.9	0.4	0.3	0.3	0.8	2.0	2.7	3.9	22.2
	THUNDERSTORMS	59	1.0	2.2	3.1	4.6	6.9	4.8	3.7	4.8	3.8	2.8	1.7	1.2	40.6
CLOUDINESS	MEAN:														
	SUNRISE-SUNSET (OKTAS)	1			4.8					2.4				4.8	
	MIDNIGHT-MIDNIGHT (OKTAS)	1			4.8										
	MEAN NO. DAYS WITH:														
	CLEAR														
	PARTLY CLOUDY														
	CLOUDY														
PR	MEAN STATION PRESSURE (IN)	27	29.49	29.39	29.30	29.30	29.30	29.30	29.30	29.30	29.30	29.40	29.40	29.50	29.36
	MEAN SEA-LEVEL PRES. (IN)	16	30.14	30.07	30.00	29.93	29.90	29.92	29.97	29.96	29.97	30.03	30.09	30.13	30.01
WINDS	MEAN SPEED (MPH)	43	9.5	9.8	10.4	10.1	9.3	8.7	8.2	7.5	7.8	7.9	8.8	8.9	8.9
	PREVAIL. DIR (TENS OF DEGS)	28	18	18	18	18	16	18	18	18	18	18	18	36	18
	MAXIMUM 2-MINUTE:														
	SPEED (MPH)	4	32	34	33	46	52	34	28	33	47	33	29	33	52
	DIR. (TENS OF DEGS)		03	36	03	27	02	29	26	09	03	36	01	36	02
	YEAR OF OCCURRENCE		1998	1998	1996	1997	1997	1997	1999	1999	1997	1998	1996	1996	MAY 1997
	MAXIMUM 5-SECOND:														
	SPEED (MPH)	4	45	45	52	55	71	47	37	54	57	43	41	41	71
DIR. (TENS OF DEGS)		03	02	03	27	02	28	13	09	05	01	29	01	02	
YEAR OF OCCURRENCE		1996	1996	1996	1997	1997	1997	1996	1999	1997	1998	1998	1996	MAY 1997	
PRECIPITATION	NORMAL (IN)	30	1.71	2.17	1.87	2.56	4.78	3.72	2.04	2.05	3.30	3.43	2.37	1.88	31.88
	MAXIMUM MONTHLY (IN)	58	9.21	6.56	6.03	9.93	9.98	14.96	10.54	8.90	8.11	12.39	7.91	14.16	14.96
	YEAR OF OCCURRENCE		1991	1992	1983	1957	1965	1981	1979	1974	1942	1998	1946	1991	JUN 1981
	MINIMUM MONTHLY (IN)	58	0.04	0.03	T	0.06	0.73	T	0.00	0.00	0.07	T	T	T	0.00
	YEAR OF OCCURRENCE		1971	1999	1972	1984	1998	1967	1962	1952	1947	1952	1970	1950	JUL 1962
	MAXIMUM IN 24 HOURS (IN)	58	4.41	3.73	2.69	3.86	5.66	6.50	5.46	6.01	6.74	7.51	5.09	6.19	7.51
	YEAR OF OCCURRENCE		1991	1958	1980	1942	1979	1964	1961	1994	1973	1998	1974	1991	OCT 1998
	NORMAL NO. DAYS WITH:														
PRECIPITATION ≥ 0.01	30	7.3	6.8	7.3	6.9	9.3	6.8	4.9	5.2	7.7	6.7	7.2	7.4	83.5	
PRECIPITATION ≥ 1.00	30	0.3	0.4	0.4	0.8	1.4	1.2	0.5	0.6	1.1	1.0	0.6	0.4	8.7	
SNOWFALL	NORMAL (IN)	30	0.4	0.5	0.1	0.0	0.0	0.0	0.0	0.0	0.0	0.0	0.1	T	1.1
	MAXIMUM MONTHLY (IN)	55	7.5	6.0	2.0	T	T	0.0	0.0	0.0	0.0	0.0	2.0	T	7.5
	YEAR OF OCCURRENCE		1985	1966	1965	1995	1993						1980	1996	JAN 1985
	MAXIMUM IN 24 HOURS (IN)	55	7.0	6.0	2.0	T	T	0.0	0.0	0.0	0.0	0.0	2.0	T	7.0
	YEAR OF OCCURRENCE		1944	1966	1965	1995	1993						1980	1993	JAN 1944
	MAXIMUM SNOW DEPTH (IN)	50	6	6	1	0	0	0	0	0	0	0	0	0	6
	YEAR OF OCCURRENCE		1949	1966	1965										FEB 1966
NORMAL NO. DAYS WITH:															
SNOWFALL ≥ 1.0	30	0.1	0.2	0.*	0.0	0.0	0.0	0.0	0.0	0.0	0.0	0.1	0.0	0.4	

PRECIPITATION (inches) 1999 AUSTIN, TX (ATT)

YEAR	JAN	FEB	MAR	APR	MAY	JUN	JUL	AUG	SEP	OCT	NOV	DEC	ANNUAL
1970	1.83	5.70	2.47	1.36	8.18	0.29	0.66	1.00	3.82	5.22	T	0.11	30.64
1971	0.04	0.69	0.79	1.07	1.37	1.68	1.23	5.69	2.13	3.02	3.02	4.22	24.95
1972	1.48	0.31	T	1.46	7.88	2.20	2.55	2.53	1.55	2.96	2.62	0.53	26.07
1973	3.42	2.05	2.92	3.09	1.38	4.70	2.95	0.06	7.44	11.11	0.58	0.76	40.46
1974	2.74	0.36	1.34	1.79	5.88	0.21	0.61	8.90	1.58	3.45	7.35	2.00	36.21
1975	1.11	2.30	0.80	3.86	8.16	7.07	2.25	2.54	3.62	2.54	0.52	2.04	36.81
1976	1.16	1.11	2.11	8.13	6.05	3.19	4.71	0.80	3.80	5.93	1.78	2.48	41.25
1977	2.25	2.58	2.18	6.08	1.24	1.22	0.21	0.06	3.10	1.19	1.69	0.34	22.14
1978	0.88	1.95	0.84	1.72	5.78	2.98	1.19	1.49	4.44	1.38	5.48	2.84	30.97
1979	2.11	3.54	3.76	2.98	7.29	0.83	10.54	0.61	1.40	0.45	0.59	3.40	37.50
1980	0.85	2.33	3.20	2.20	5.43	0.31	0.28	1.18	5.66	1.29	3.41	1.24	27.38
1981	1.61	1.18	3.05	0.81	9.02	14.96	3.39	0.91	2.65	7.04	0.72	0.39	45.73
1982	0.85	0.80	1.39	4.17	5.68	2.99	0.13	0.77	1.88	2.66	3.19	2.12	26.63
1983	1.88	2.84	6.03	0.16	5.33	3.84	2.85	2.21	2.83	2.82	2.66	0.53	33.98
1984	1.66	1.00	2.49	0.06	1.27	1.69	1.44	0.45	0.79	10.34	1.88	3.23	26.30
1985	1.34	2.10	1.84	2.39	1.65	5.64	1.53	0.37	3.98	5.84	4.75	1.06	32.49
1986	0.45	1.14	0.41	1.46	7.36	2.20	0.45	1.21	4.77	7.98	1.81	5.77	35.01
1987	0.92	2.87	1.36	0.45	6.75	10.85	3.46	0.27	5.03	0.31	3.08	1.31	36.66
1988	0.27	0.32	2.66	2.02	3.33	2.60	2.77	1.67	1.43	0.66	0.34	1.14	19.21
1989	3.79	0.85	2.12	2.43	6.90	3.10	0.09	2.72	0.27	2.20	1.26	0.14	25.87
1990	1.28	3.55	2.08	3.12	3.65	1.55	3.14	0.33	1.76	3.39	3.87	0.72	28.44
1991	9.21	2.99	0.90	4.91	3.98	4.40	1.16	4.28	2.25	3.06	0.91	14.16	52.21
1992	4.83	6.56	5.43	1.90	9.05	4.96	0.96	1.95	1.98	1.38	3.76	3.29	46.05
1993	3.39	3.14	2.09	2.94	5.30	3.99	T	0.75	0.34	2.42	1.00	1.14	26.50
1994	1.43	2.13	1.70	1.68	3.68	0.74	0.26	8.50	5.69	7.85	1.83	5.67	41.16
1995	0.81	1.44	2.21	3.08	9.49	2.74	0.63	5.71	2.86	1.43	3.22	0.51	34.13
1996	0.06	0.62	0.60	1.90	1.82	4.48	0.15	8.81	4.02	0.78	4.13	2.19	29.56
1997	1.07	3.94	1.58	5.59	7.10	8.97	2.13	2.34	1.46	5.42	2.91	4.28	46.79
1998	2.68	3.26	3.07	0.78	0.73	1.56	0.90	1.39	6.76	12.39	4.04	1.56	39.12
1999	0.20	0.03	4.09	0.79	7.07	3.37	4.43	0.70	0.28	1.67	0.15	1.15	23.93
POR= 144 YRS	2.03	2.39	2.24	2.36	4.41	3.01	2.10	2.13	3.49	3.15	2.30	2.50	32.11

WBAN : 13958

AVERAGE TEMPERATURE (°F) 1999 AUSTIN, TX (ATT)

YEAR	JAN	FEB	MAR	APR	MAY	JUN	JUL	AUG	SEP	OCT	NOV	DEC	ANNUAL
1970	44.0	53.1	55.2	68.7	71.9	79.9	83.8	85.8	79.2	66.7	57.4	58.7	67.0
1971	54.6	54.9	62.1	68.2	76.2	83.7	85.9	81.2	79.3	72.2	60.5	56.4	69.6
1972	51.0	55.7	66.1	73.5	73.5	81.7	82.3	83.1	82.4	70.9	52.8	48.3	68.4
1973	45.9	50.3	63.7	63.1	73.7	78.4	82.8	82.5	79.7	71.1	65.1	52.4	67.4
1974	49.0	56.3	66.5	68.9	77.7	80.1	84.4	81.3	72.3	69.5	56.9	50.7	67.8
1975	53.4	52.2	59.7	67.8	73.7	79.9	82.0	82.6	75.8	70.0	60.4	52.4	67.5
1976	49.5	61.3	62.0	68.0	70.7	79.8	80.2	83.4	78.1	61.3	51.6	48.5	66.2
1977	41.6	54.1	61.3	67.0	75.3	82.2	85.1	86.8	83.8	71.6	61.7	53.6	68.7
1978	40.7	45.0	58.5	69.8	77.3	82.3	86.4	84.8	79.0	69.8	60.6	49.7	67.0
1979	40.4	48.5	61.1	67.0	71.5	79.8	83.1	82.5	77.6	73.5	56.5	53.0	66.2
1980	51.2	52.8	61.4	66.7	75.1	84.6	87.9	86.0	81.7	68.4	57.5	53.7	68.9
1981	50.6	53.4	59.3	72.4	74.6	81.4	84.9	85.5	79.7	72.2	63.7	53.7	69.3
1982	51.9	51.0	64.7	67.3	75.6	81.6	86.5	87.4	81.8	70.7	58.5	52.3	69.1
1983	47.4	51.3	57.8	64.6	72.7	78.4	82.7	84.4	78.3	72.0	62.4	41.9	66.2
1984	46.3	55.5	63.4	71.1	78.0	82.6	85.1	86.0	76.3	70.5	58.7	58.4	69.3
1985	44.1	49.7	64.3	70.0	76.3	80.7	82.9	87.0	79.3	71.7	63.0	49.1	68.2
1986	54.0	57.6	63.7	71.8	73.8	81.4	85.9	84.7	82.0	68.8	59.0	50.8	69.5
1987	50.9	55.5	57.9	67.4	76.1	80.2	83.4	85.4	78.8	69.9	60.0	53.3	68.2
1988	47.3	53.3	60.4	68.5	74.7	80.2	84.6	86.7	81.6	72.5	64.9	55.5	69.2
1989	55.3	48.6	60.8	69.2	78.3	81.3	85.7	84.7	79.3	72.0	62.7	44.3	68.5
1990	57.9	59.3	61.7	69.8	78.5	85.9	83.4	86.1	81.2	70.0	63.6	51.3	70.7
1991	47.3	56.6	63.5	71.4	76.7	81.5	83.9	85.1	77.2	72.7	56.8	54.5	68.9
1992	50.6	58.9	62.7	68.0	73.2	81.6	83.9	82.0	80.8	72.7	56.9	54.8	68.8
1993	49.9	54.5	60.9	66.3	73.7	81.4	85.3	87.4	81.8	70.5	55.7	55.0	68.5
1994	52.2	55.3	62.8	69.3	74.7	84.2	87.2	83.7	77.5	71.4	64.0	55.7	69.8
1995	53.6	56.2	60.6	67.6	76.2	79.3	84.5	84.4	78.7	70.8	59.0	55.0	68.8
1996	50.5	57.6	57.2	68.6	80.6	82.5	86.7	83.9	77.6	69.9	60.5	54.9	69.2
1997	48.9	53.1	62.9	63.0	72.5	79.1	83.9	83.1	81.5	70.4	56.5	50.5	67.1
1998	56.5	55.5	59.5	67.4	79.9	86.4	88.0	85.8	82.9	71.6	62.8	52.9	70.8
1999	55.6	62.3	62.4	71.8	76.5	81.7	83.2	88.3	81.4	71.2	64.4	55.7	71.2
POR= 102 YRS	50.3	53.7	60.7	68.0	74.9	81.6	84.2	84.4	79.1	70.0	59.4	51.8	68.2

HEATING DEGREE DAYS (base 65°F) 1999 AUSTIN, TX (ATT)

YEAR	JUL	AUG	SEP	OCT	NOV	DEC	JAN	FEB	MAR	APR	MAY	JUN	TOTAL
1970-71	0	0	3	75	240	231	328	300	171	52	0	0	1400
1971-72	0	0	3	0	184	271	434	298	66	6	0	0	1262
1972-73	0	0	0	46	375	513	586	405	72	128	3	0	2128
1973-74	0	0	0	8	83	387	496	258	108	36	0	0	1376
1974-75	0	0	5	11	271	441	377	356	204	53	0	0	1718
1975-76	0	0	1	27	204	404	476	158	173	19	3	0	1465
1976-77	0	0	0	170	402	506	719	308	148	20	0	0	2273
1977-78	0	0	0	16	136	354	750	561	225	15	7	0	2064
1978-79	0	0	0	5	186	475	754	460	144	37	10	0	2071
1979-80	0	0	0	16	278	372	425	357	168	47	0	0	1663
1980-81	0	0	0	69	262	361	443	340	196	6	0	0	1677
1981-82	0	0	0	44	86	349	424	400	147	81	2	0	1533
1982-83	0	0	0	37	245	408	538	376	229	93	4	0	1930
1983-84	0	0	4	7	154	721	573	280	123	16	0	0	1878
1984-85	0	0	18	34	221	228	643	428	99	19	0	0	1690
1985-86	0	0	7	12	134	490	338	267	87	14	2	0	1351
1986-87	0	0	0	18	214	431	434	266	228	83	0	0	1674
1987-88	0	0	0	11	203	369	548	357	193	34	0	0	1715
1988-89	0	0	0	3	116	307	307	464	198	64	0	0	1459
1989-90	0	0	0	39	157	638	239	171	154	26	0	0	1424
1990-91	0	0	0	44	121	430	540	242	110	8	1	0	1496
1991-92	0	0	8	34	280	332	440	188	105	39	4	0	1430
1992-93	0	0	0	0	267	327	462	296	163	54	0	0	1569
1993-94	0	0	0	70	298	324	396	287	139	36	15	0	1565
1994-95	0	0	0	20	104	301	359	247	201	35	2	0	1269
1995-96	0	0	8	9	194	347	442	286	282	59	0	0	1627
1996-97	0	0	6	33	176	327	513	343	118	98	0	0	1614
1997-98	0	0	0	36	273	445	271	258	218	13	0	0	1514
1998-99	0	0	0	17	116	405	303	126	118	21	0	0	1106
1999-	0	0	0	41	80	304							

WBAN : 13958

COOLING DEGREE DAYS (base 65°F) 1999 AUSTIN, TX (ATT)

YEAR	JAN	FEB	MAR	APR	MAY	JUN	JUL	AUG	SEP	OCT	NOV	DEC	ANNUAL
1970	8	1	10	165	235	451	589	651	435	134	22	43	2744
1971	14	20	86	157	355	570	656	511	436	229	53	13	3100
1972	6	34	111	269	272	510	547	571	529	239	16	3	3107
1973	1	0	34	78	277	407	557	550	447	205	93	4	2653
1974	6	21	160	158	398	463	606	513	229	157	34	6	2751
1975	21	0	47	141	277	454	536	552	329	187	72	22	2638
1976	0	57	85	115	186	451	479	577	401	61	6	0	2418
1977	0	7	38	90	324	526	629	681	572	227	40	7	3141
1978	5	6	31	167	396	526	670	621	427	161	60	7	3077
1979	2	7	29	102	216	449	570	549	385	285	29	8	2631
1980	5	11	62	106	322	598	718	659	510	182	45	19	3237
1981	2	23	27	233	304	501	627	641	446	272	54	5	3135
1982	23	14	144	157	337	506	672	701	509	219	61	18	3361
1983	0	0	13	90	250	406	556	608	409	227	80	11	2650
1984	0	13	80	204	413	535	629	659	364	206	40	30	3173
1985	0	9	85	174	358	480	562	687	443	228	82	4	3112
1986	2	64	53	227	278	499	654	618	519	141	39	0	3094
1987	5	4	17	158	352	463	576	638	421	170	58	14	2876
1988	7	23	57	146	305	463	614	679	503	243	123	19	3182
1989	16	10	76	197	417	498	650	620	435	263	93	2	3277
1990	28	16	57	178	425	634	579	662	495	204	86	11	3375
1991	0	11	72	207	372	501	594	633	382	280	39	15	3106
1992	0	15	41	137	264	505	595	538	479	246	28	17	2865
1993	0	7	44	99	276	498	641	700	509	248	27	19	3068
1994	9	22	80	173	320	579	693	586	385	224	79	18	3168
1995	12	6	75	121	355	438	612	607	426	198	21	42	2913
1996	3	83	47	174	491	529	682	588	392	192	45	21	3247
1997	15	16	58	46	240	431	592	569	500	211	26	0	2704
1998	15	1	53	92	470	648	715	653	543	231	57	35	3513
1999	18	56	39	231	361	509	572	729	500	242	70	18	3345

SNOWFALL (inches) 1999 AUSTIN, TX (ATT)

YEAR	JUL	AUG	SEP	OCT	NOV	DEC	JAN	FEB	MAR	APR	MAY	JUN	TOTAL
1970-71	0.0	0.0	0.0	0.0	0.0	0.0	0.0	T	0.0	0.0	0.0	0.0	T
1971-72	0.0	0.0	0.0	0.0	0.0	T	T	0.0	0.0	0.0	0.0	0.0	T
1972-73	0.0	0.0	0.0	0.0	0.0	0.0	0.8	0.9	0.0	0.0	0.0	0.0	1.7
1973-74	0.0	0.0	0.0	0.0	0.0	0.0	0.0	0.0	0.0	0.0	0.0	0.0	0.0
1974-75	0.0	0.0	0.0	0.0	0.0	0.0	T	T	0.0	0.0	0.0	0.0	T
1975-76	0.0	0.0	0.0	0.0	0.0	0.0	0.0	0.0	0.0	0.0	0.0	0.0	0.0
1976-77	0.0	0.0	0.0	0.0	T	0.0	0.0	T	0.0	0.0	0.0	0.0	T
1977-78	0.0	0.0	0.0	0.0	0.0	0.0	T	T	T	0.0	0.0	0.0	T
1978-79	0.0	0.0	0.0	0.0	0.0	T	T	T	0.0	0.0	0.0	0.0	T
1979-80	0.0	0.0	0.0	0.0	T	0.0	T	T	0.0	0.0	0.0	0.0	T
1980-81	0.0	0.0	0.0	0.0	2.0	0.0	T	T	0.0	0.0	0.0	0.0	2.0
1981-82	0.0	0.0	0.0	0.0	0.0	0.0	2.0	T	T	0.0	0.0	0.0	2.0
1982-83	0.0	0.0	0.0	0.0	0.0	0.0	0.0	0.0	0.0	0.0	0.0	0.0	0.0
1983-84	0.0	0.0	0.0	0.0	0.0	T	0.0	0.0	0.0	0.0	0.0	0.0	T
1984-85	0.0	0.0	0.0	0.0	0.0	0.0	7.5	1.2	0.0	0.0	0.0	0.0	8.7
1985-86	0.0	0.0	0.0	0.0	0.0	0.0	T	0.0	0.0	0.0	0.0	0.0	T
1986-87	0.0	0.0	0.0	0.0	0.0	0.0	0.0	0.0	T	0.0	0.0	0.0	T
1987-88	0.0	0.0	0.0	0.0	0.0	0.0	0.0	T	0.0	0.0	0.0	0.0	T
1988-89	0.0	0.0	0.0	0.0	0.0	0.0	0.0	T	T	0.0	T	0.0	T
1989-90	0.0	0.0	0.0	0.0	0.0	T	0.0	0.0	0.0	0.0	0.0	0.0	T
1990-91	0.0	0.0	0.0	0.0	0.0	T	0.0	0.0	0.0	0.0	0.0	0.0	T
1991-92	0.0	0.0	0.0	0.0	0.0	0.0	0.0	0.0	0.0	0.0	0.0	0.0	0.0
1992-93	0.0	0.0	0.0	0.0	T	0.0	T	0.0	T	0.0	T	0.0	T
1993-94	0.0	0.0	0.0	0.0	0.0	T	T	0.4	T	0.0	0.0	0.0	0.4
1994-95	0.0	0.0	0.0	0.0	0.0	0.0	T	0.0	0.0	T	0.0	0.0	T
1995-96	0.0	0.0	0.0	0.0	0.0	0.0	0.0	0.3	0.0	0.0	0.0	0.0	0.3
1996-97	0.0	0.0	0.0	0.0	T	T							
1997-98				0.0		T			T	0.0	0.0	0.0	
1998-99	0.0					T							
1999-													
POR= 56 YRS	0.0	0.0	0.0	0.0	0.1	T	0.5	0.3	0.0	T	T	0.0	0.9

WBAN : 13958

REFERENCE NOTES:

<p>PAGE 1: THE TEMPERATURE GRAPH SHOWS NORMAL MAXIMUM AND NORMAL MINIMUM DAILY TEMPERATURES (SOLID CURVES) AND THE ACTUAL DAILY HIGH AND LOW TEMPERATURES (VERTICAL BARS).</p> <p>PAGE 2 AND 3: H/C INDICATES HEATING AND COOLING DEGREE DAYS. RH INDICATES RELATIVE HUMIDITY W/O INDICATES WEATHER AND OBSTRUCTIONS S INDICATES SUNSHINE. PR INDICATES PRESSURE. CLOUDINESS ON PAGE 3 IS THE SUM OF THE CEILOMETER AND SATELLITE DATA NOT TO EXCEED EIGHT EIGHTHS(OKTAS).</p> <p>GENERAL: T INDICATES TRACE PRECIPITATION, AN AMOUNT GREATER THAN ZERO BUT LESS THAN THE LOWEST REPORTABLE VALUE. + INDICATES THE VALUE ALSO OCCURS ON EARLIER DATES. BLANK ENTRIES DENOTE MISSING OR UNREPORTED DATA. NORMALS ARE 30-YEAR AVERAGES (1961 - 1990). ASOS INDICATES AUTOMATED SURFACE OBSERVING SYSTEM. PM INDICATES THE LAST DAY OF THE PREVIOUS MONTH. POR (PERIOD OF RECORD) BEGINS WITH THE JANUARY DATA MONTH AND IS THE NUMBER OF YEARS USED TO COMPUTE THE MEAN. INDIVIDUAL MONTHS WITHIN THE POR MAY BE MISSING. WHEN THE POR FOR A NORMAL IS LESS THAN 30 YEARS, THE NORMAL IS PROVISIONAL AND IS BASED ON THE NUMBER OF YEARS INDICATED. 0.* OR * INDICATES THE VALUE OR MEAN-DAYS-WITH IS BETWEEN 0.00 AND 0.05. CLOUDINESS FOR ASOS STATIONS DIFFERS FROM THE NON-ASOS OBSERVATION TAKEN BY A HUMAN OBSERVER. ASOS STATION CLOUDINESS IS BASED ON TIME-AVERAGED CEILOMETER DATA FOR CLOUDS AT OR BELOW 12,000 FEET AND ON SATELLITE DATA FOR CLOUDS ABOVE 12,000 FEET. THE NUMBER OF DAYS WITH CLEAR, PARTLY CLOUDY, AND CLOUDY CONDITIONS FOR ASOS STATIONS IS THE SUM OF THE CEILOMETER AND SATELLITE DATA FOR THE SUNRISE TO SUNSET PERIOD.</p>	<p>GENERAL CONTINUED: CLEAR INDICATES 0 - 2 OKTAS, PARTLY CLOUDY INDICATES 3 - 6 OKTAS, AND CLOUDY INDICATES 7 OR 8 OKTAS. WHEN AT LEAST ONE OF THE ELEMENTS (CEILOMETER OR SATELLITE) IS MISSING, THE DAILY CLOUDINESS IS NOT COMPUTED. WIND DIRECTION IS RECORDED IN TENS OF DEGREES (2 DIGITS) CLOCKWISE FROM TRUE NORTH. "00" INDICATES CALM. "36" INDICATES TRUE NORTH. RESULTANT WIND IS THE VECTOR AVERAGE OF THE SPEED AND DIRECTION. AVERAGE TEMPERATURE IS THE SUM OF THE MEAN DAILY MAXIMUM AND MINIMUM TEMPERATURE DIVIDED BY 2. SNOWFALL DATA COMPRISE ALL FORMS OF FROZEN PRECIPITATION, INCLUDING HAIL. A HEATING (COOLING) DEGREE DAY IS THE DIFFERENCE BETWEEN THE AVERAGE DAILY TEMPERATURE AND 65° F. DRY BULB IS THE TEMPERATURE OF THE AMBIENT AIR. DEW POINT IS THE TEMPERATURE TO WHICH THE AIR MUST BE COOLED TO ACHIEVE 100 PERCENT RELATIVE HUMIDITY. WET BULB IS THE TEMPERATURE THE AIR WOULD HAVE IF THE MOISTURE CONTENT WAS INCREASED TO 100 PERCENT RELATIVE HUMIDITY.</p> <p>ON JULY 1, 1996, THE NATIONAL WEATHER SERVICE BEGAN USING THE "METAR" OBSERVATION CODE THAT WAS ALREADY EMPLOYED BY MOST OTHER NATIONS OF THE WORLD. THE MOST NOTICEABLE DIFFERENCE IN THIS ANNUAL PUBLICATION WILL BE THE CHANGE IN UNITS FROM TENTHS TO EIGHTHS(OKTAS) FOR REPORTING THE AMOUNT OF SKY COVER.</p>
---	---

1999
AUSTIN/CITY,
TEXAS (ATT)

Austin, capital of Texas, is located on the Colorado River where the stream crosses the Balcones escarpment separating the Texas Hill Country from the Blackland Prairies to the east. Elevations within the city vary from 400 feet to nearly 1,000 feet above sea level. Native trees include cedar, oak, walnut, mesquite, and pecan.

The climate of Austin is humid subtropical with hot summers. Winters are mild, with below freezing temperatures occurring on an average of about 25 days each year. Rather strong northerly winds, accompanied by sharp drops in temperature, frequently occur during the winter months in connection with cold fronts, but cold spells are usually of short duration, seldom lasting more than two days. Daytime temperatures in summer are hot, but summer nights are usually pleasant.

Precipitation is fairly evenly distributed throughout the year, with heaviest amounts occurring in late spring. A secondary rainfall peak occurs in September, primarily because of tropical cyclones that migrate out of the Gulf of Mexico. Precipitation from April through

September usually results from thunderstorms, with fairly large amounts of rain falling within short periods of time. While thunderstorms and heavy rains may occur in all months of the year, most of the winter precipitation consists of light rain. Snow is insignificant as a source of moisture, and usually melts as rapidly as it falls. The city may experience several seasons in succession with no measurable snowfall.

Prevailing winds are southerly, however in winter, northerly winds are about as frequent as those from the south. Destructive winds and damaging hailstorms are infrequent. On rare occasions dissipating tropical storms produce strong winds and heavy rains in the area. Blowing dust occurs occasionally in spring, but visibility rarely drops substantially, and then only for a few hours.

The average length of the warm season (freeze-free period) is 273 days. The average occurrence of the last temperature of 32 degrees in spring is early March and the average occurrence of the first temperature of 32 degrees is late November.

STATION LOCATION

AUSTIN CITY, TEXAS

LOCATION	OCCUPIED FROM	OCCUPIED TO	AIRLINE DISTANCES AND DIRECTIONS FROM PREVIOUS LOCATION	LATITUDE NORTH	LONGITUDE WEST	ELEVATION ABOVE											AUGUST 1960	* Type M = AMOS T = AUTOB S = ASOS W = AWOS	REMARKS
						SEA LEVEL	GROUND												
							WIND	WIND	WIND	WIND	WIND	WIND	WIND	WIND	WIND	WIND			
Engineering Building University of Texas	1906	4/1/23	NA	30° 18'	97° 44'	590												Cooperative station.	
Engineering Building University of Texas	4/1/23	4/1/24	0.5 mi. W	30° 17'	97° 44'	560												Cooperative station.	
Engineering Building University of Texas	4/1/24	10/15/26	0.5 mi. NW	30° 17'	97° 44'	570												Cooperative station.	
Room 901, Littlefield Bldg., Sixth & Congress	10/15/26	10/8/36	1.5 mi. S	30° 17'	97° 44'	495	148	135	135		128			128				Weather Bureau Office.	
Room 408, Federal Court Building, 200 W. 8th St	10/8/36	2/12/42	0.25 mi. NW	30° 17'	97° 44'	540	79	66	66		60			60				Weather Bureau Office.	
Rooms 801-807 Littlefield Building Sixth & Congress	2/12/42	8/16/42	0.25 mi. SE	30° 17'	97° 44'	495	148	135	135		128			128				Weather Bureau Office.	
<u>AIRPORT</u>																			
Administration Building Municipal Airport	8/16/42	6/30/61	3 mi. NNE	30° 18'	97° 42'	615	41 a32	6	5	Unk	3			3				a - Effective 9/13/57.	
Administration Building 3600 Manor Road Municipal Airport	7/1/61	10/24/79	0.7 mi. SE	30° 18'	97° 42'	597	20	5 b	5 b	35	3	NA		3	c6	NA		b - Removed 7/1/63. c - Minor adjustment 2/20/67.	
Weather Svc Bldg. 3724 Manor Rd. Municipal Airport	10/24/79	07/01/95	0.25 mi. SE	30° 17'	97° 42'	597	d20 g33	NA	NA	20	5 i5	5 e5 f3	5 e5 f3	d3 f3	d6 h5	NA		d - Not moved 10/24/79. e - Installed 10/25/79. f - Relocated 10/30/79. g - Relocated 7/1/82. h - Moved 20' NE & type change 11/15/84. i - Minor move 02/23/89.	
Camp Mabry Army Nat'l Guard Base	07/01/95	Present	NA	30°19'	97°46'	673											S	ASOS Commissioned 07/01/95	

SUBSCRIPTION: Price and ordering information available through: National Climatic Data Center, Federal Building, Asheville, North Carolina 28801. INQUIRIES/COMMENTS CALL: (828) 271-4800

National Climatic Data Center
151 Patton Avenue, Rm 120
Asheville NC 28801-5001

OFFICIAL BUSINESS
PENALTY FOR PRIVATE USE \$300
FORWARD AND ADDRESS CORRECTION

FIRST CLASS
POSTAGE & FEES PAID
United States Department of Commerce
NOAA Permit No. G - 19