

1999

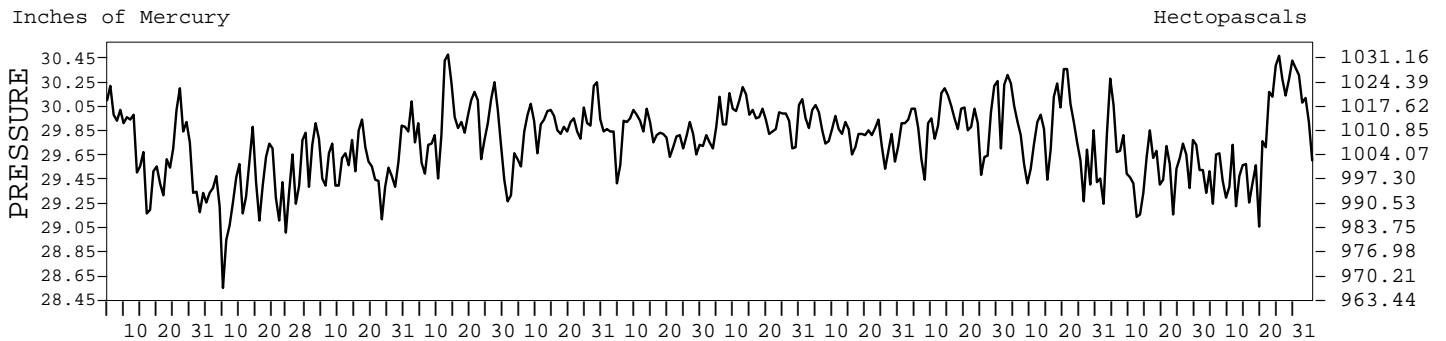
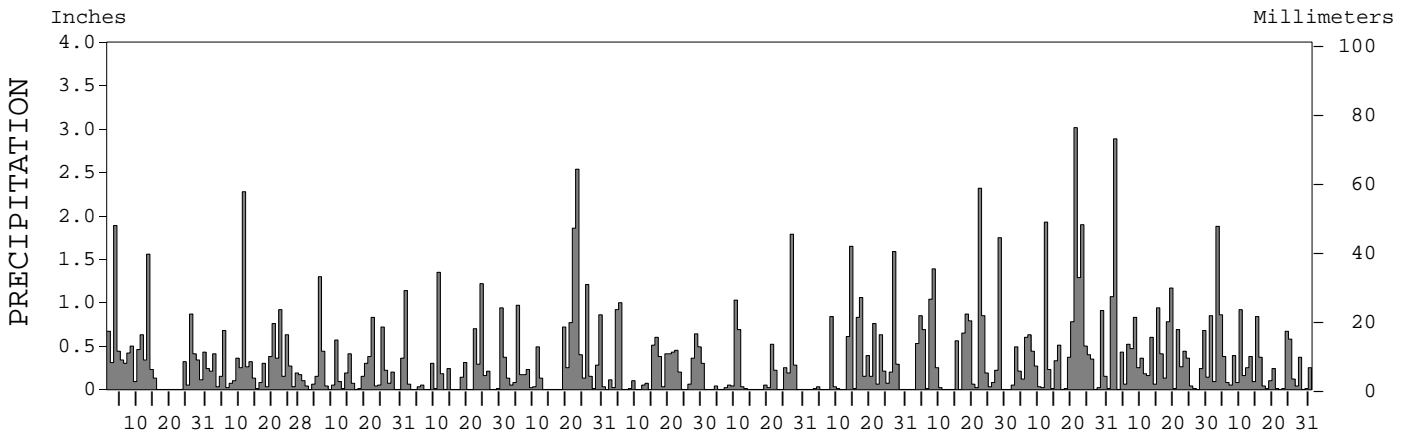
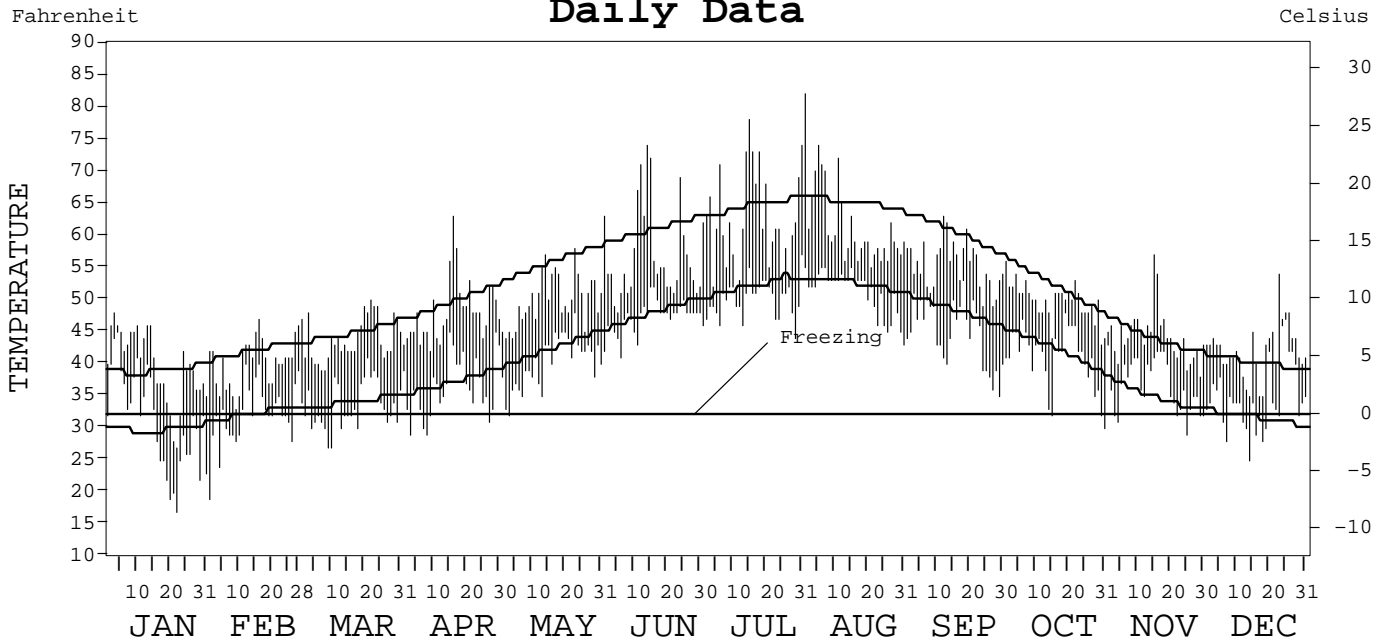
LOCAL CLIMATOLOGICAL DATA
ANNUAL SUMMARY WITH COMPARATIVE DATA



ISSN 0197-9566

ANNETTE,
ALASKA (ANN)

Daily Data



I CERTIFY THAT THIS IS AN OFFICIAL PUBLICATION OF THE NATIONAL OCEANIC AND ATMOSPHERIC ADMINISTRATION, AND IS COMPILED FROM RECORDS ON FILE AT THE NATIONAL CLIMATIC DATA CENTER.

Thomas R. Karl

NATIONAL OCEANIC AND ATMOSPHERIC ADMINISTRATION
 NATIONAL ENVIRONMENTAL AND INFORMATION SERVICE
 NATIONAL ENVIRONMENTAL AND INFORMATION SERVICE
 NATIONAL CLIMATIC DATA CENTER
 NATIONAL CLIMATIC DATA CENTER
 DIRECTOR NATIONAL CLIMATIC DATA CENTER
 ASHEVILLE, NORTH CAROLINA

METEOROLOGICAL DATA FOR 1999

ANNETTE, AK (ANN)

LATITUDE: 55° 02' 36" N LONGITUDE: 131° 34' 12" W ELEVATION (FT): GRND: 112 BARO: 112 TIME ZONE: ALASKA (UTC + 9) WBAN: 25308

	ELEMENT	JAN	FEB	MAR	APR	MAY	JUN	JUL	AUG	SEP	OCT	NOV	DEC	YEAR	
TEMPERATURE °F	MEAN DAILY MAXIMUM	39.7	40.3	43.9	48.1	50.0	56.9	62.5	61.7	55.4	49.7	44.3	42.1	49.5	
	HIGHEST DAILY MAXIMUM	48	47	50	63	58	74	78	82	63	56	57	54	82	
	DATE OF OCCURRENCE	03	16	22	16	23	14	15	01	12	01	15	23	AUG 01	
	MEAN DAILY MINIMUM	31.0	32.2	33.4	36.5	40.2	47.3	50.0	51.2	44.8	41.0	36.7	34.6	39.9	
	LOWEST DAILY MINIMUM	17	19	27	29	32	41	44	43	35	30	29	25	17	
	DATE OF OCCURRENCE	22	01	10+	08+	03	06	29	31	29	31	25	14	JAN 22	
	AVERAGE DRY BULB	35.4	36.3	38.7	42.3	45.1	52.1	56.3	56.5	50.1	45.4	40.5	38.4	44.8	
	MEAN WET BULB	34.3	34.7	36.4	39.7		49.4	53.3	54.4	49.4	44.5	39.4			
	MEAN DEW POINT	31.4	31.9	32.9	35.8		47.1	51.0	53.1	48.2	43.0	37.0			
	NUMBER OF DAYS WITH:														
	MAXIMUM ≥ 70°	0	0	0	0	0	3	6	6	0	0	0	0	0	15
	MAXIMUM ≤ 32°	4	0	0	0	0	0	0	0	0	0	0	0	0	4
	MINIMUM ≤ 32°	18	16	16	5	1	0	0	0	0	3	6	11	76	
	MINIMUM ≤ 0°	0	0	0	0	0	0	0	0	0	0	0	0	0	
H/C	HEATING DEGREE DAYS	911	796	807	673	609	380	267	262	441	600	729	818	7293	
	COOLING DEGREE DAYS	0	0	0	0	0	0	3	4	0	0	0	0	7	
RH	MEAN (PERCENT)	84	84	81	78	85	85	85	91	92	90	87	92	86	
	HOUR 03 LST	87	84	88	87	91	92	95	98	97	93	88	92	91	
	HOUR 09 LST	87	86	81	76	81	85	83	91	92	89	86	93	86	
	HOUR 15 LST	81	83	70	68	77	77	74	83	84	85	85	91	80	
	HOUR 21 LST	84	85	84	83	88	88	89	93	96	90	88	90	88	
S	PERCENT POSSIBLE SUNSHINE														
W/O	NUMBER OF DAYS WITH:														
	HEAVY FOG (VISBY ≤ 1/4 MI)	2	2	0	1	1	0	4	2	5	1	0	4	22	
	THUNDERSTORMS	0	0	0	0	0	0	0	0	0	0	0	0	0	
CLOUDINESS	SUNRISE-SUNSET: (OKTAS)														
	CEILOMETER (≤ 12,000 FT.)														
	SATELLITE (> 12,000 FT.)														
	MIDNIGHT-MIDNIGHT: (OKTAS)														
	CEILOMETER (≤ 12,000 FT.)														
	SATELLITE (> 12,000 FT.)														
NUMBER OF DAYS WITH:															
CLEAR															
PARTLY CLOUDY															
CLOUDY															
PR	MEAN STATION PRESS. (IN.)	29.68	29.35	29.60	29.93	29.85	29.82	29.96	29.84	29.95	29.82	29.56	29.80	29.76	
	MEAN SEA-LEVEL PRESS. (IN.)	29.81	29.48	29.73	30.05		29.94	30.08	29.96	30.07		29.68			
WINDS	RESULTANT SPEED (MPH)	3.6	7.4	5.1	3.8	6.0	4.7	1.6	4.3	3.3	6.8	8.9	5.2	4.9	
	RES. DIR. (TENS OF DEGS.)	14	12	13	15	15	14	18	14	14	15	12	14	14	
	MEAN SPEED (MPH)	7.6	10.2	8.2	8.1	8.6	6.9	6.0	6.2	6.1	9.0	10.9	7.5	7.9	
	PREVAIL. DIR. (TENS OF DEGS.)	14	11	12	12	14	14	15	14	12	12	14	14	12	
	MAXIMUM 2-MINUTE WIND:														
	SPEED (MPH)	40	46	32	33	28	24	18	31	37	40	35	32	46	
	DIR. (TENS OF DEGS.)	13	13	12	14	13	12	32	14	13	13	14	14	13	
	DATE OF OCCURRENCE	13	05	11	11	26+	05+	14+	27	22	25+	23	01	FEB 05	
	MAXIMUM 5-SECOND WIND:														
	SPEED (MPH)	55	62	47	49	46	34	26	43	49	58	52	48	62	
DIR. (TENS OF DEGS.)	14	13	12	17	08	14	16	14	14	14	14	15	13		
DATE OF OCCURRENCE	13	05	11	11	05	05	11	28	22	25+	23	01	FEB 05		
PRECIPITATION	WATER EQUIVALENT:														
	TOTAL (IN.)	11.08	9.55	6.85	7.34	12.05	7.55	5.23	9.58	13.17	15.58	14.18	10.12	122.28	
	GREATEST 24-HOUR (IN.)	2.19	2.30	1.30	1.43	2.93	1.13	1.93	2.01	2.67	3.02	3.90	2.05	3.90	
	DATE OF OCCURRENCE	03-04	10-11	06	23-24	22-23	04-05	26-27	13-14	22-23	21	01-02	03-04	NOV 01-02	
	NUMBER OF DAYS WITH:														
	PRECIPITATION ≥ 0.01	23	28	26	18	25	22	16	21	21	28	28	29	285	
PRECIPITATION ≥ 0.10	21	21	15	13	19	16	8	14	15	21	23	18	204		
PRECIPITATION ≥ 1.00	2	1	1	3	3	1	2	3	4	4	3	1	28		
SNOWFALL	SNOW, ICE PELLETS, HAIL:														
	TOTAL (IN.)	17.7	27.9	21.7	3.4	0.2	0.0	0.0	0.0	0.0	0.0	1.9	8.5	81.3	
	GREATEST 24-HOUR (IN.)	4.2	9.1	11.6	2.0	0.2	0.0	0.0	0.0	0.0	0.0	1.2	4.8	11.6	
	DATE OF OCCURRENCE	30	10-11	06-07	09	02						29	13	MAR 06-07	
	MAXIMUM SNOW DEPTH (IN.)	5	6	4	T	T	0	0	0	0	0	T	5	6	
	DATE OF OCCURRENCE	31	11+	07+	13+	03						26	14	FEB 11+	
NUMBER OF DAYS WITH:															
SNOWFALL ≥ 1.0	7	8	5	1	0	0	0	0	0	0	1	3	25		

NORMALS, MEANS, AND EXTREMES

ANNETTE, AK (ANN)

LATITUDE: 55° 02' 36" N LONGITUDE: 131° 34' 12" W ELEVATION (FT): GRND: 112 BARO: 112 TIME ZONE: ALASKA (UTC + 9) WBAN: 25308

ELEMENT		POR	JAN	FEB	MAR	APR	MAY	JUN	JUL	AUG	SEP	OCT	NOV	DEC	YEAR
TEMPERATURE °F	NORMAL DAILY MAXIMUM	30	38.9	41.9	44.7	49.5	55.7	60.8	64.5	64.9	60.2	51.8	43.8	40.0	51.4
	MEAN DAILY MAXIMUM	51	38.6	41.7	44.2	49.4	55.9	60.6	64.2	64.6	59.7	51.6	44.2	40.3	51.2
	HIGHEST DAILY MAXIMUM	52	61	65	64	82	88	89	89	90	82	71	67	62	90
	YEAR OF OCCURRENCE		1981	1993	1994	1976	1963	1969	1976	1960	1989	1964	1970	1962	AUG 1960
	MEAN OF EXTREME MAXS.	51	49.4	50.7	53.3	62.5	71.6	75.4	79.1	78.3	70.6	60.0	53.5	50.0	62.9
	NORMAL DAILY MINIMUM	30	29.7	32.1	33.9	37.0	42.3	47.8	52.0	52.3	48.1	41.9	34.7	31.4	40.3
	MEAN DAILY MINIMUM	51	29.2	32.0	33.5	37.3	42.7	48.0	52.0	52.3	48.1	41.8	35.2	31.7	40.3
	LOWEST DAILY MINIMUM	52	1	2	1	21	31	37	40	40	33	18	-3	1	-3
	YEAR OF OCCURRENCE		1982	1956	1955	1954	1971	1965	1973	1973	1983	1984	1985	1964	NOV 1985
	MEAN OF EXTREME MINS.	51	14.4	19.4	23.2	29.6	35.4	42.2	46.5	45.8	39.7	31.7	23.6	16.9	30.7
	NORMAL DRY BULB	30	34.3	37.0	39.3	43.3	49.0	54.3	58.3	58.6	54.2	46.9	39.3	35.7	45.9
	MEAN DRY BULB	51	33.9	36.8	39.0	43.3	49.4	54.4	58.1	58.5	53.8	46.7	39.7	35.9	45.8
	MEAN WET BULB	16	35.0	35.5	37.4	41.2	46.6	50.9	51.2	52.0	48.2	44.8	38.0	35.9	43.1
	MEAN DEW POINT	16	30.3	28.7	31.0	34.5	39.5	44.5	48.2	49.4	45.9	42.2	34.7	32.7	38.5
	NORMAL NO. DAYS WITH:														
MAXIMUM ≥ 70°	30	0.0	0.0	0.0	0.0	0.0	0.0	0.0	0.0	0.0	0.0	0.0	0.0	0.0	
MAXIMUM ≤ 32°	30	5.1	1.8	0.5	0.0	0.0	0.0	0.0	0.0	0.0	0.0	0.1	1.5	4.0	
MINIMUM ≤ 32°	30	17.5	13.6	11.8	4.2	0.3	0.0	0.0	0.0	0.0	1.4	10.7	15.2	74.7	
MINIMUM ≤ 0°	30	0.0	0.0	0.0	0.0	0.0	0.0	0.0	0.0	0.0	0.0	*	0.0	0.0	
H/C	NORMAL HEATING DEG. DAYS	30	952	784	797	651	496	325	214	204	324	561	771	908	6987
	NORMAL COOLING DEG. DAYS	30	0	0	0	0	0	0	7	6	0	0	0	0	13
RH	NORMAL (PERCENT)	30	77	78	75	75	75	77	79	81	82	82	79	79	78
	HOUR 03 LST	30	80	80	80	83	85	87	88	89	89	86	82	81	84
	HOUR 09 LST	30	80	78	76	73	73	74	77	80	82	83	81	81	78
	HOUR 15 LST	30	76	73	68	66	65	67	69	71	73	78	77	79	72
	HOUR 21 LST	30	78	80	78	79	79	81	82	84	85	84	80	80	81
S	PERCENT POSSIBLE SUNSHINE														
W/O	MEAN NO. DAYS WITH:														
	HEAVY FOG (VISBY ≤ 1/4 MI)	35	0.8	0.6	0.7	0.5	1.1	1.3	2.2	2.0	3.3	1.5	0.9	0.5	15.4
	THUNDERSTORMS	35	0.1	0.0	0.0	0.0	0.0	0.2	0.2	0.1	0.2	0.3	0.4	0.1	1.6
CLOUDINESS	MEAN:														
	SUNRISE-SUNSET (OKTAS)	42	6.4	6.6	6.4	6.3	6.2	6.5	6.2	6.0	6.1	6.7	6.5	6.6	6.4
	MIDNIGHT-MIDNIGHT (OKTAS)	19	5.9	6.1	5.8	5.8	5.7	5.9	5.9	5.6	5.8	6.2	6.0	6.0	5.9
	MEAN NO. DAYS WITH:														
CLEAR	43	4.4	3.0	3.7	3.5	3.8	2.5	3.4	3.9	3.6	2.1	3.0	2.8	39.7	
PARTLY CLOUDY	43	3.7	4.1	4.7	5.8	6.7	6.5	6.0	5.9	5.6	3.9	3.3	3.7	59.9	
CLOUDY	43	22.9	21.2	22.5	20.7	20.5	21.1	20.9	20.6	20.1	24.2	23.0	23.7	261.4	
PR	MEAN STATION PRESSURE (IN)	9	29.73	29.64	29.70	29.83	29.89	29.88	29.92	29.91	29.88	29.78	29.67	29.69	29.79
	MEAN SEA-LEVEL PRES. (IN)	16	29.84	29.86	29.89	29.94	29.99	30.02	30.10	30.06	30.03	29.89	29.80	29.87	29.94
WINDS	MEAN SPEED (MPH)	33	11.8	12.1	10.7	10.9	9.1	8.7	8.0	8.3	9.2	12.0	12.4	12.5	10.5
	PREVAIL. DIR (TENS OF DEGS)	8	11	11	11	14	14	14	14	14	14	14	11	11	14
	MAXIMUM 2-MINUTE:														
	SPEED (MPH)	3	40	46	32	33	28	25	32	31	37	48	37	39	48
	DIR. (TENS OF DEGS)		13	13	12	14	13	12	13	14	13	13	14	13	13
	YEAR OF OCCURRENCE		1999	1999	1999	1999	1999	1997	1998	1999	1999	1998	1998	1997	OCT 1998
MAXIMUM 5-SECOND:															
SPEED (MPH)	3	55	62	47	49	46	34	41	43	49	64	52	57	64	
DIR. (TENS OF DEGS)		14	13	12	17	08	14	13	14	14	12	14	15	12	
YEAR OF OCCURRENCE		1999	1999	1999	1999	1999	1999	1998	1999	1999	1998	1999	1997	OCT 1998	
PRECIPITATION	NORMAL (IN)	30	10.07	8.79	7.89	7.79	6.03	4.67	4.27	6.15	9.28	15.47	11.67	11.20	103.28
	MAXIMUM MONTHLY (IN)	52	20.69	18.06	23.57	21.35	14.68	10.40	10.85	20.72	17.40	34.87	28.09	28.90	34.87
	YEAR OF OCCURRENCE		1958	1965	1960	1949	1966	1956	1959	1958	1987	1958	1959	1959	OCT 1958
	MINIMUM MONTHLY (IN)	52	0.77	0.12	2.13	1.23	1.57	0.61	0.56	0.71	2.52	7.04	3.61	3.86	0.12
	YEAR OF OCCURRENCE		1950	1989	1983	1948	1968	1982	1971	1954	1965	1987	1970	1983	FEB 1989
	MAXIMUM IN 24 HOURS (IN)	52	4.65	5.58	4.02	4.75	4.29	3.79	2.63	4.68	5.04	7.59	5.19	5.20	7.59
	YEAR OF OCCURRENCE		1962	1965	1966	1956	1958	1962	1967	1956	1952	1958	1957	1959	OCT 1958
	NORMAL NO. DAYS WITH:														
PRECIPITATION ≥ 0.01	30	20.3	18.6	20.1	18.7	16.8	15.1	14.0	15.0	17.8	24.1	22.0	22.2	224.7	
PRECIPITATION ≥ 1.00	30	2.9	2.1	1.7	2.2	1.6	0.7	1.0	1.7	2.7	5.4	3.9	3.4	29.3	
SNOWFALL	NORMAL (IN)	30	13.5	10.6	8.2	2.9	0.2	0.0	0.0	0.0	0.0	0.2	3.5	12.0	51.1
	MAXIMUM MONTHLY (IN)	52	36.3	33.4	46.9	22.2	5.0	T	0.0	0.0	0.0	4.2	24.8	44.8	46.9
	YEAR OF OCCURRENCE		1974	1974	1971	1971	1964	1996				1956	1994	1964	MAR 1971
	MAXIMUM IN 24 HOURS (IN)	52	12.3	14.2	11.8	14.0	5.0	T	0.0	0.0	0.0	3.2	9.6	12.8	14.2
	YEAR OF OCCURRENCE		1972	1948	1971	1971	1964	1996				1956	1973	1964	FEB 1948
	MAXIMUM SNOW DEPTH (IN)	50	42	40	25	3	4	0	0	0	0	2	10	30	42
	YEAR OF OCCURRENCE		1965	1969	1972	1972	1964					1985	1973	1964	JAN 1965
NORMAL NO. DAYS WITH:															
SNOWFALL ≥ 1.0	30	4.2	3.2	2.2	0.9	0.*	0.0	0.0	0.0	0.0	0.1	1.2	3.4	15.2	

PRECIPITATION (inches) 1999 ANNETTE, AK (ANN)

YEAR	JAN	FEB	MAR	APR	MAY	JUN	JUL	AUG	SEP	OCT	NOV	DEC	ANNUAL
1970	7.76	8.03	7.83	8.11	11.21	5.50	5.76	7.88	11.82	15.29	3.61	6.82	99.62
1971	7.59	10.70	9.49	9.96	4.24	3.61	0.56	8.57	7.30	14.04	13.64	8.33	98.03
1972	8.20	8.41	10.54	8.78	5.18	4.95	4.36	9.90	4.78	13.46	10.11	9.43	98.10
1973	9.78	9.66	8.83	8.85	9.50	5.96	5.46	4.67	12.81	15.79	5.37	10.63	107.31
1974	6.42	11.91	3.07	8.02	7.70	5.19	3.10	2.54	7.46	22.49	16.05	15.95	109.90
1975	11.30	7.51	4.43	7.95	3.92	5.56	4.94	6.57	9.93	8.82	9.20	14.88	95.01
1976	16.61	9.94	11.92	8.79	9.78	4.44	6.61	7.56	13.15	11.40	10.02	15.49	125.71
1977	5.88	16.50	7.46	7.31	3.08	6.46	4.15	2.01	5.66	15.31	11.68	5.94	91.44
1978	3.01	6.10	7.67	5.84	3.92	0.95	1.78	6.00	11.66	15.95	14.39	11.35	88.62
1979	6.51	7.18	9.69	2.24	9.81	6.86	2.44	2.77	12.42	10.35	10.20	12.34	92.81
1980	4.89	8.14	9.72	16.88	4.55	0.81	6.72	6.56	8.09	18.35	17.37	14.11	116.19
1981	10.21	6.41	10.57	10.33	4.69	5.31	2.19	7.31	13.17	8.25	16.61	9.26	104.31
1982	8.80	3.53	6.16	7.48	7.56	0.61	4.73	1.85	5.54	15.55	8.57	7.31	77.69
1983	10.73	6.30	2.13	3.97	4.61	3.50	6.65	11.29	8.37	15.53	8.51	3.86	85.45
1984	11.82	11.41	8.35	5.71	5.30	9.37	6.77	7.23	5.45	13.26	8.35	7.85	100.87
1985	11.86	9.65	8.18	7.55	4.17	3.27	1.74	5.18	6.52	12.40	4.77	9.81	85.10
1986	12.82	3.20	9.93	7.18	6.51	3.60	4.11	3.28	5.71	23.51	11.74	10.21	101.80
1987	10.81	8.65	4.69	11.32	8.31	7.46	1.07	3.71	17.40	7.04	17.82	12.16	110.44
1988	9.49	6.06	13.72	7.14	8.91	5.36	7.16	8.01	8.58	11.29	13.97	8.51	108.20
1989	15.28	0.12	4.41	1.93	2.68	3.00	1.77	2.33	5.22	13.90	17.43	17.80	85.87
1990	10.04	5.78	9.91	3.98	3.77	6.21	2.67	5.76	6.66	14.76	7.09	12.53	89.16
1991	8.44	10.20	6.79	4.45	5.78	4.29	8.16	9.21	10.81	17.72	23.32	22.89	132.06
1992	15.53	6.24	8.01	10.17	7.80	4.77	3.69	4.19	17.19	11.30	14.11	8.94	111.94
1993	12.06	16.53	6.36	5.85	4.71	3.53	4.16	3.43	5.47	11.56	14.59	17.05	105.30
1994	13.99	7.04	9.76	5.95	6.91	5.36	4.23	3.56	13.19	14.35	15.53	9.81	109.68
1995	4.44	5.20	7.12	5.64	2.65	2.96	4.58	4.93	5.99	15.41	16.10	11.47	86.49
1996	6.78	8.38	6.38	8.00	2.50	7.56	1.09	5.02	9.60	15.37	7.53	8.19	86.40
1997	9.48	9.45	7.83	8.53	2.43	5.93	5.98	5.59	11.28	13.00	8.48	18.76	106.74
1998	6.75	5.53	5.04	6.07	3.08	3.59	3.77	13.78	10.80	10.25	7.15	11.03	86.84
1999	11.08	9.55	6.85	7.34	12.05	7.55	5.23	9.58	13.17	15.58	14.18	10.12	122.28
POR= 58 YRS	10.08	8.79	8.45	8.12	6.01	4.92	4.74	6.63	9.71	15.92	12.55	11.90	107.82

WBAN : 25308

AVERAGE TEMPERATURE (°F) 1999 ANNETTE, AK (ANN)

YEAR	JAN	FEB	MAR	APR	MAY	JUN	JUL	AUG	SEP	OCT	NOV	DEC	ANNUAL
1970	33.7	41.9	44.3	44.6	50.2	56.9	56.7	56.8	52.6	48.2	39.3	31.4	46.4
1971	28.8	34.9	35.9	41.6	45.7	52.5	61.7	57.7	53.1	43.9	39.2	30.5	43.8
1972	26.7	30.1	36.9	38.0	49.0	52.7	58.9	58.3	52.3	44.0	41.8	33.1	43.5
1973	33.2	36.3	38.1	42.5	47.2	51.2	54.6	55.4	52.8	44.0	30.8	36.2	43.5
1974	28.1	35.4	36.8	43.0	46.8	50.6	55.1	58.7	55.9	46.6	38.9	38.9	44.6
1975	30.5	30.3	35.1	40.6	46.9	50.6	56.2	55.9	53.8	46.0	37.2	37.3	43.4
1976	38.1	34.2	36.7	44.5	48.4	54.2	58.3	58.5	55.4	47.0	42.6	39.4	46.4
1977	37.2	43.7	39.5	44.6	49.9	53.3	56.3	62.9	53.5	46.7	35.6	30.0	46.1
1978	34.2	39.0	38.9	45.1	47.6	57.6	58.0	58.5	53.7	48.1	38.7	34.2	46.1
1979	30.7	31.6	41.3	44.0	47.7	52.4	59.1	60.5	55.4	49.0	43.1	37.2	46.0
1980	30.8	40.8	38.3	44.4	50.2	56.5	56.9	58.2	53.5	49.4	43.8	34.2	46.4
1981	45.6	39.6	42.7	42.4	52.2	53.0	60.1	60.2	54.1	46.8	43.2	36.2	48.0
1982	29.4	33.0	38.2	40.0	46.7	57.0	57.8	56.4	54.6	45.7	36.8	38.0	44.5
1983	40.3	43.2	42.9	47.1	50.9	55.3	58.1	57.7	52.0	46.7	41.5	32.9	47.4
1984	39.6	40.4	43.6	43.6	48.1	52.4	55.7	57.0	52.9	44.6	37.8	33.4	45.8
1985	42.0	34.8	38.4	40.8	48.3	51.7	59.9	56.2	52.3	43.4	27.6	38.3	44.5
1986	40.9	33.9	43.3	42.1	48.0	54.0	57.5	58.4	54.8	51.3	39.8	40.5	47.0
1987	38.8	41.2	38.9	43.5	48.8	53.4	58.9	60.2	53.9	47.3	43.7	38.2	47.2
1988	34.3	38.9	40.5	43.4	49.6	53.2	55.8	57.7	52.6	48.9	42.2	35.8	46.1
1989	34.0	31.2	38.0	46.7	50.6	56.5	59.8	60.0	56.7	46.4	40.6	43.1	47.0
1990	35.9	33.8	41.4	47.0	52.2	56.2	62.1	61.2	55.2	44.8	36.0	33.1	46.6
1991	32.0	40.8	36.9	43.7	49.8	54.6	57.4	59.2	54.5	45.1	43.9	41.5	46.6
1992	41.2	41.0	41.8	44.9	50.6	57.1	59.6	59.2	50.9	46.2	43.2	33.8	47.5
1993	33.5	41.0	41.0	47.5	55.7	57.2	60.8	61.3	56.7	49.5	41.0	41.5	48.9
1994	41.8	32.2	42.0	47.0	50.9	55.3	59.6	62.3	54.1	47.0	37.3	36.5	47.2
1995	38.5	38.1	39.6	47.8	53.5	57.3	60.6	57.5	57.9	47.4	41.3	37.2	48.1
1996	28.2	38.3	40.8	45.3	49.8	53.7	58.1	57.8	51.5	45.1	36.6	31.2	44.7
1997	35.1	39.9	36.8	44.1	52.2	55.7	58.4	62.1	55.7	46.6	43.0	41.7	47.6
1998	35.2	43.4	41.6	44.0	52.2	57.6	59.2	57.1	52.4	47.9	40.2	35.0	47.2
1999	35.4	36.3	38.7	42.3	45.1	52.1	56.3	56.5	50.1	45.4	40.5	38.4	44.8
POR= 59 YRS	34.3	36.9	39.0	43.2	49.5	54.0	58.0	58.5	53.9	46.8	39.7	36.1	45.8

HEATING DEGREE DAYS (base 65°F) 1999 ANNETTE, AK (ANN)

YEAR	JUL	AUG	SEP	OCT	NOV	DEC	JAN	FEB	MAR	APR	MAY	JUN	TOTAL
1970-71	248	249	367	514	762	1032	1111	836	892	694	590	367	7662
1971-72	145	220	349	648	766	1062	1181	1006	862	803	488	363	7893
1972-73	198	201	376	644	690	982	981	797	827	668	543	408	7315
1973-74	314	289	359	646	1017	885	1138	824	867	656	554	424	7973
1974-75	298	200	266	564	776	803	1062	965	920	727	550	423	7554
1975-76	271	276	328	584	825	852	827	888	867	610	509	315	7152
1976-77	216	194	283	550	666	787	856	591	786	604	462	344	6339
1977-78	262	119	338	560	876	1077	951	721	800	590	534	216	7044
1978-79	213	196	333	519	780	947	1055	930	728	621	532	373	7227
1979-80	176	137	280	490	652	854	1050	698	819	612	454	252	6474
1980-81	247	217	337	475	629	946	596	705	683	672	389	353	6249
1981-82	156	158	321	560	648	887	1096	893	824	740	561	232	7076
1982-83	224	263	305	592	839	828	755	605	679	529	432	287	6338
1983-84	209	222	387	561	699	987	779	709	654	639	518	371	6735
1984-85	278	242	354	627	807	970	705	837	819	719	509	393	7260
1985-86	159	269	377	661	1113	820	742	866	667	681	520	322	7197
1986-87	225	199	299	420	748	751	805	659	804	639	492	350	6391
1987-88	189	154	328	540	631	823	945	751	757	643	468	349	6578
1988-89	279	219	366	491	678	898	953	940	829	538	439	249	6879
1989-90	158	152	248	570	725	675	895	871	728	533	389	254	6198
1990-91	119	127	288	617	862	983	1018	673	864	635	463	310	6959
1991-92	228	197	309	612	626	721	732	690	713	595	441	240	6104
1992-93	164	176	415	576	648	961	970	666	735	516	291	229	6347
1993-94	125	134	247	471	712	719	713	912	707	533	433	283	5989
1994-95	168	101	319	552	823	877	816	746	779	509	350	240	6280
1995-96	147	228	207	538	704	854	1134	770	740	586	464	334	6706
1996-97	211	221	401	610	845	1040	920	698	870	622	390	271	7099
1997-98	200	106	271	562	654	714	916	596	718	621	392	218	5968
1998-99	183	239	373	522	737	920	911	796	807	673	609	380	7150
1999-	267	262	441	600	729	818							

WBAN : 25308

COOLING DEGREE DAYS (base 65°F) 1999 ANNETTE, AK (ANN)

YEAR	JAN	FEB	MAR	APR	MAY	JUN	JUL	AUG	SEP	OCT	NOV	DEC	ANNUAL
1970	0	0	0	0	0	0	0	3	0	0	0	0	3
1971	0	0	0	0	0	0	51	2	0	0	0	0	53
1972	0	0	0	0	0	0	15	0	1	0	0	0	16
1973	0	0	0	0	0	0	0	0	0	0	0	0	0
1974	0	0	0	0	0	0	0	12	0	0	0	0	12
1975	0	0	0	0	0	0	8	0	0	0	0	0	8
1976	0	0	0	0	0	0	16	1	0	0	0	0	17
1977	0	0	0	0	0	0	0	60	0	0	0	0	60
1978	0	0	0	0	0	1	5	0	0	0	0	0	6
1979	0	0	0	0	0	0	1	8	0	0	0	0	9
1980	0	0	0	0	0	3	0	12	0	0	0	0	15
1981	0	0	0	0	0	0	11	17	0	0	0	0	28
1982	0	0	0	0	0	0	10	0	0	0	0	0	10
1983	0	0	0	0	0	2	1	0	0	0	0	0	3
1984	0	0	0	0	0	0	0	0	0	0	0	0	0
1985	0	0	0	0	0	0	7	2	0	0	0	0	9
1986	0	0	0	0	0	0	0	3	1	0	0	0	4
1987	0	0	0	0	0	10	5	10	0	0	0	0	25
1988	0	0	0	0	0	0	0	1	2	0	0	0	3
1989	0	0	0	0	0	1	5	2	5	0	0	0	13
1990	0	0	0	0	0	1	36	17	0	0	0	0	54
1991	0	0	0	0	0	6	3	23	0	0	0	0	32
1992	0	0	0	0	0	10	5	5	0	0	0	0	20
1993	0	0	0	0	10	0	4	26	5	0	0	0	45
1994	0	0	0	0	0	0	9	21	0	0	0	0	30
1995	0	0	0	0	0	16	14	0	0	0	0	0	30
1996	0	0	0	0	0	1	6	0	0	0	0	0	7
1997	0	0	0	0	0	1	0	24	0	0	0	0	25
1998	0	0	0	0	1	4	10	0	0	0	0	0	15
1999	0	0	0	0	0	0	3	4	0	0	0	0	7

SNOWFALL (inches) 1999 ANNETTE, AK (ANN)

YEAR	JUL	AUG	SEP	OCT	NOV	DEC	JAN	FEB	MAR	APR	MAY	JUN	TOTAL
1970-71	0.0	0.0	0.0	T	1.4	23.2	16.6	13.3	46.9	22.2	0.0	0.0	123.6
1971-72	0.0	0.0	0.0	T	T	37.4	34.6	25.4	25.3	14.0	0.0	0.0	136.7
1972-73	0.0	0.0	0.0	0.0	0.0	11.4	20.6	22.0	4.5	T	0.0	0.0	58.5
1973-74	0.0	0.0	0.0	T	18.3	1.2	36.3	33.4	8.9	T	0.0	0.0	98.1
1974-75	0.0	0.0	0.0	0.0	4.6	7.1	30.6	13.8	6.0	7.0	T	0.0	69.1
1975-76	0.0	0.0	0.0	0.0	4.1	25.2	18.9	22.5	18.4	5.6	T	0.0	94.7
1976-77	0.0	0.0	0.0	1.5	T	1.8	0.7	1.2	1.1	3.1	0.0	0.0	9.4
1977-78	0.0	0.0	0.0	0.0	2.8	24.2	0.8	0.2	9.7	T	0.0	0.0	37.7
1978-79	0.0	0.0	0.0	0.0	7.4	10.3	17.5	30.4	4.9	1.2	T	0.0	71.7
1979-80	0.0	0.0	0.0	0.0	0.4	13.1	25.6	3.6	5.4	T	T	0.0	48.1
1980-81	0.0	0.0	0.0	0.0	2.4	9.0	0.0	0.1	0.7	T	0.0	0.0	12.2
1981-82	0.0	0.0	0.0	T	T	17.6	17.8	17.6	6.7	T	T	0.0	59.7
1982-83	0.0	0.0	0.0	T	T	1.4	9.8	0.2	T	0.0	0.0	0.0	11.4
1983-84	0.0	0.0	0.0	T	0.1	8.6	0.3	3.8	T	0.3	0.2	0.0	13.3
1984-85	0.0	0.0	0.0	0.4	6.5	7.4	2.3	23.2	7.9	2.3	0.4	T	50.4
1985-86	0.0	0.0	0.0	1.5	5.4	1.2	1.1	1.8	0.2	5.2	T	0.0	16.4
1986-87	0.0	0.0	0.0	0.0	6.4	T	5.6	4.9	13.2	3.4	T	0.0	33.5
1987-88	0.0	0.0	0.0	0.0	1.5	7.3	3.1	3.2	3.6	4.7	T	T	23.4
1988-89	0.0	0.0	0.0	0.0	5.6	8.4	14.2	T	11.5	T	0.0	0.0	39.7
1989-90	0.0	0.0	0.0	0.0	T	0.0	4.4			0.0	0.0	0.0	
1990-91	0.0	0.0	0.0	0.0			T			0.8	T	0.0	
1991-92	0.0	0.0	0.0	0.6	0.0	2.0	1.1	6.5	T	0.0	0.0	0.0	10.2
1992-93	0.0	0.0	0.0	0.0	0.0		20.5	4.7	T	0.0	0.0	0.0	
1993-94	0.0	0.0	0.0	0.0	0.6	T	0.1	21.6	T	T	T	0.0	22.3
1994-95	0.0	0.0	0.0	0.0	24.8	10.2	T	4.0	8.5	T	0.0	0.0	47.5
1995-96	0.0	0.0	0.0	T	8.9	5.3	1.5	4.9	T	5.1	0.0	T	25.7
1996-97	0.0	0.0					11.4	0.0		T	0.0	0.0	
1997-98	0.0	0.0	0.0	T	T	4.0	8.8	T	2.2	0.2	0.0	0.0	15.2
1998-99	0.0	0.0	0.0	0.0	T	7.9	17.7	27.9	21.7	3.4	0.2	0.0	78.8
1999-	0.0	0.0	0.0	0.0	1.9	8.5							
POR= 51 YRS	0.0	0.0	0.0	0.2	3.5	10.6	11.9	10.6	8.4	2.2	0.1	T	47.5

WBAN : 25308

REFERENCE NOTES:

<p>PAGE 1: THE TEMPERATURE GRAPH SHOWS NORMAL MAXIMUM AND NORMAL MINIMUM DAILY TEMPERATURES (SOLID CURVES) AND THE ACTUAL DAILY HIGH AND LOW TEMPERATURES (VERTICAL BARS).</p> <p>PAGE 2 AND 3: H/C INDICATES HEATING AND COOLING DEGREE DAYS. RH INDICATES RELATIVE HUMIDITY W/O INDICATES WEATHER AND OBSTRUCTIONS S INDICATES SUNSHINE. PR INDICATES PRESSURE. CLOUDINESS ON PAGE 3 IS THE SUM OF THE CEILOMETER AND SATELLITE DATA NOT TO EXCEED EIGHT EIGHTHS(OKTAS).</p> <p>GENERAL: T INDICATES TRACE PRECIPITATION, AN AMOUNT GREATER THAN ZERO BUT LESS THAN THE LOWEST REPORTABLE VALUE. + INDICATES THE VALUE ALSO OCCURS ON EARLIER DATES. BLANK ENTRIES DENOTE MISSING OR UNREPORTED DATA. NORMALS ARE 30-YEAR AVERAGES (1961 - 1990). ASOS INDICATES AUTOMATED SURFACE OBSERVING SYSTEM. PM INDICATES THE LAST DAY OF THE PREVIOUS MONTH. POR (PERIOD OF RECORD) BEGINS WITH THE JANUARY DATA MONTH AND IS THE NUMBER OF YEARS USED TO COMPUTE THE MEAN. INDIVIDUAL MONTHS WITHIN THE POR MAY BE MISSING. WHEN THE POR FOR A NORMAL IS LESS THAN 30 YEARS, THE NORMAL IS PROVISIONAL AND IS BASED ON THE NUMBER OF YEARS INDICATED. 0.* OR * INDICATES THE VALUE OR MEAN-DAYS-WITH IS BETWEEN 0.00 AND 0.05. CLOUDINESS FOR ASOS STATIONS DIFFERS FROM THE NON-ASOS OBSERVATION TAKEN BY A HUMAN OBSERVER. ASOS STATION CLOUDINESS IS BASED ON TIME-AVERAGED CEILOMETER DATA FOR CLOUDS AT OR BELOW 12,000 FEET AND ON SATELLITE DATA FOR CLOUDS ABOVE 12,000 FEET. THE NUMBER OF DAYS WITH CLEAR, PARTLY CLOUDY, AND CLOUDY CONDITIONS FOR ASOS STATIONS IS THE SUM OF THE CEILOMETER AND SATELLITE DATA FOR THE SUNRISE TO SUNSET PERIOD.</p>	<p>GENERAL CONTINUED: CLEAR INDICATES 0 - 2 OKTAS, PARTLY CLOUDY INDICATES 3 - 6 OKTAS, AND CLOUDY INDICATES 7 OR 8 OKTAS. WHEN AT LEAST ONE OF THE ELEMENTS (CEILOMETER OR SATELLITE) IS MISSING, THE DAILY CLOUDINESS IS NOT COMPUTED. WIND DIRECTION IS RECORDED IN TENS OF DEGREES (2 DIGITS) CLOCKWISE FROM TRUE NORTH. "00" INDICATES CALM. "36" INDICATES TRUE NORTH. RESULTANT WIND IS THE VECTOR AVERAGE OF THE SPEED AND DIRECTION. AVERAGE TEMPERATURE IS THE SUM OF THE MEAN DAILY MAXIMUM AND MINIMUM TEMPERATURE DIVIDED BY 2. SNOWFALL DATA COMPRISE ALL FORMS OF FROZEN PRECIPITATION, INCLUDING HAIL. A HEATING (COOLING) DEGREE DAY IS THE DIFFERENCE BETWEEN THE AVERAGE DAILY TEMPERATURE AND 65° F. DRY BULB IS THE TEMPERATURE OF THE AMBIENT AIR. DEW POINT IS THE TEMPERATURE TO WHICH THE AIR MUST BE COOLED TO ACHIEVE 100 PERCENT RELATIVE HUMIDITY. WET BULB IS THE TEMPERATURE THE AIR WOULD HAVE IF THE MOISTURE CONTENT WAS INCREASED TO 100 PERCENT RELATIVE HUMIDITY.</p> <p>ON JULY 1, 1996, THE NATIONAL WEATHER SERVICE BEGAN USING THE "METAR" OBSERVATION CODE THAT WAS ALREADY EMPLOYED BY MOST OTHER NATIONS OF THE WORLD. THE MOST NOTICEABLE DIFFERENCE IN THIS ANNUAL PUBLICATION WILL BE THE CHANGE IN UNITS FROM TENTHS TO EIGHTHS(OKTAS) FOR REPORTING THE AMOUNT OF SKY COVER.</p>
---	---

1999
ANNETTE,
ALASKA (ANN)

Annette is located on Annette Island, one of the islands at the southern tip of the Alexander Archipelago of southeastern Alaska and is 20 airline miles south of Ketchikan.

Due to the proximity of Pacific Ocean waters, particularly to the south and west, the climate of Annette is maritime. Temperatures are relatively mild and daily variations between high and low readings are confined within rather narrow limits, with the ranges between average maximum and minimum readings for all months of the year averaging 8 to 13 degrees. Periods of sub-freezing temperatures seldom extend beyond ten days duration. A minimum reading below zero is a rare occurrence. Conversely, extreme high temperatures occur infrequently during the summer months. Temperatures reach the middle 80s nearly every summer. It is not unusual for daily maximum readings to remain in the 50s during the summer months.

Because it is located almost directly in the path of easterly-moving storms crossing the Gulf of Alaska, Annette experiences frequent and relatively heavy precipitation with annual amounts closely approximating that of the immediate coastal regions of Washington and Oregon. October

and November are usually the wettest months and the greatest percentage of precipitation, even in the winter months, occurs in the form of rain. Some snow, mixed with rain, may occur as early as October. However, appreciable snowfall seldom occurs from late March to late November. Accumulated snow depths of a foot or more are infrequent and, because of moderating temperatures, snow cover seldom persists beyond a week or two. Topography has a pronounced effect on precipitation in this region and Annette averages 65 percent as much as Ketchikan, only 20 miles to the north. Despite relatively heavy precipitation, flood damage is seldom of consequence because of the small drainage areas and steep topography which provide rapid escape of surface runoff into the sea.

Strong southeasterly winds are frequent from October through March. Thick fogs are infrequent and of short duration. Thunderstorms average one or two a year and generally are the result of frontal activity. The considerable amount of cloudiness prevalent over this area results in a corresponding low percentage of possible sunshine.

STATION LOCATION

ANNETTE, ALASKA

LOCATION	OCCUPIED FROM	OCCUPIED TO	AIRLINE DISTANCES AND DIRECTIONS FROM PREVIOUS LOCATION	LATITUDE NORTH	LONGITUDE WEST	ELEVATION ABOVE											* Type M = AMOS T = AUTOB S = ASOS W = AWOS	REMARKS	
						SEA LEVEL	GROUND												AUTOMATED
							WIND	EMERGENCY	EMERGENCY	EMERGENCY	EMERGENCY	EMERGENCY	EMERGENCY	EMERGENCY	EMERGENCY	EMERGENCY			
Annette Island Landing Field	9/18/40	12/17/47	NA	55° 02'	131°34'	110	55	5	4									USAF to 7/29/47 then Weather Bureau and USAF jointly.	
Annette Airport (CAA) (USCG Hangar)	12/17/47	7/1/50	Not Moved	55° 02'	131°34'	110	62	12	10					4	4			Weather Bureau Operation. Some instruments relocated.	
Annette Airport (CAA) + (USCG Hangar)	7/1/50	6/7/77	Not Moved	55° 02'	131°34'	110	62	12	12	NA	NA	b5	2	NA	NA			Instrument relocations and additions. a - Effective 7/6/50. b - Inoperative 4/23/53-12/31/53. c - Effective 3/5/60. d - Commissioned 1250' NE of thermometer site 4/1/60.	
+ Federal Aviation Airport (Eff. 1959)++ ++ Annette Island AP (Eff. 1975)																			
Annette Island Airport	6/7/77	09/01/96	400 ft. NNE	55° 02'	131°34'	109	30	10	10	NA	NA	e3	6	3	NA	NA		e - Installed 9/1/80. f - Minor adjustment 1/18/85. g - Commissioned 10/1/85.	
Annette Island Airport	09/01/96	Present	NA	55°03'	131°34'	112										S		ASOS Commissioned 09/01/96	

SUBSCRIPTION: Price and ordering information available through: National Climatic Data Center, Federal Building, Asheville, North Carolina 28801.
INQUIRIES/COMMENTS CALL: (828) 271-4800

National Climatic Data Center
151 Patton Avenue, Rm 120
Asheville NC 28801-5001

OFFICIAL BUSINESS
PENALTY FOR PRIVATE USE \$300
FORWARD AND ADDRESS CORRECTION

FIRST CLASS
POSTAGE & FEES PAID
United States Department of Commerce
NOAA Permit No. G - 19