

1999

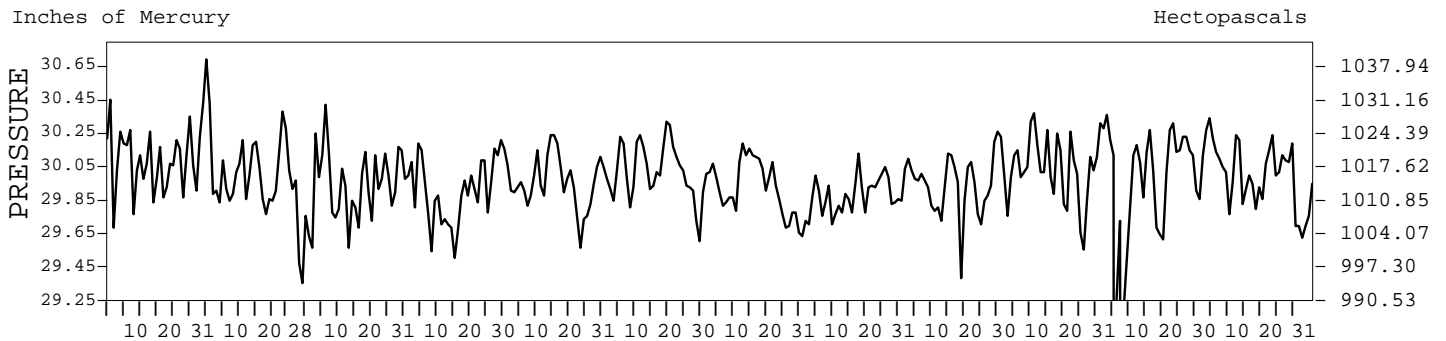
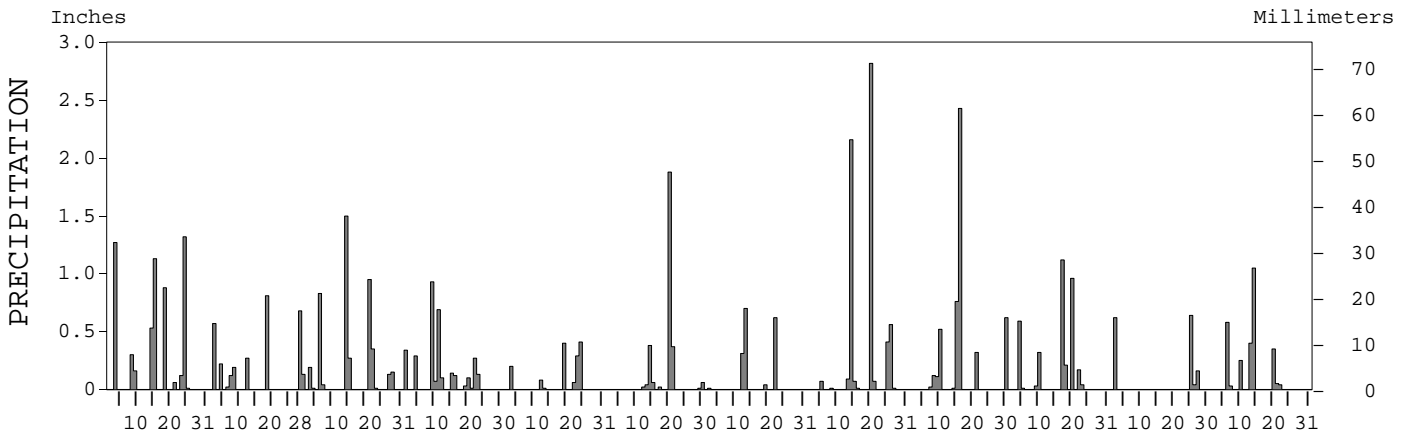
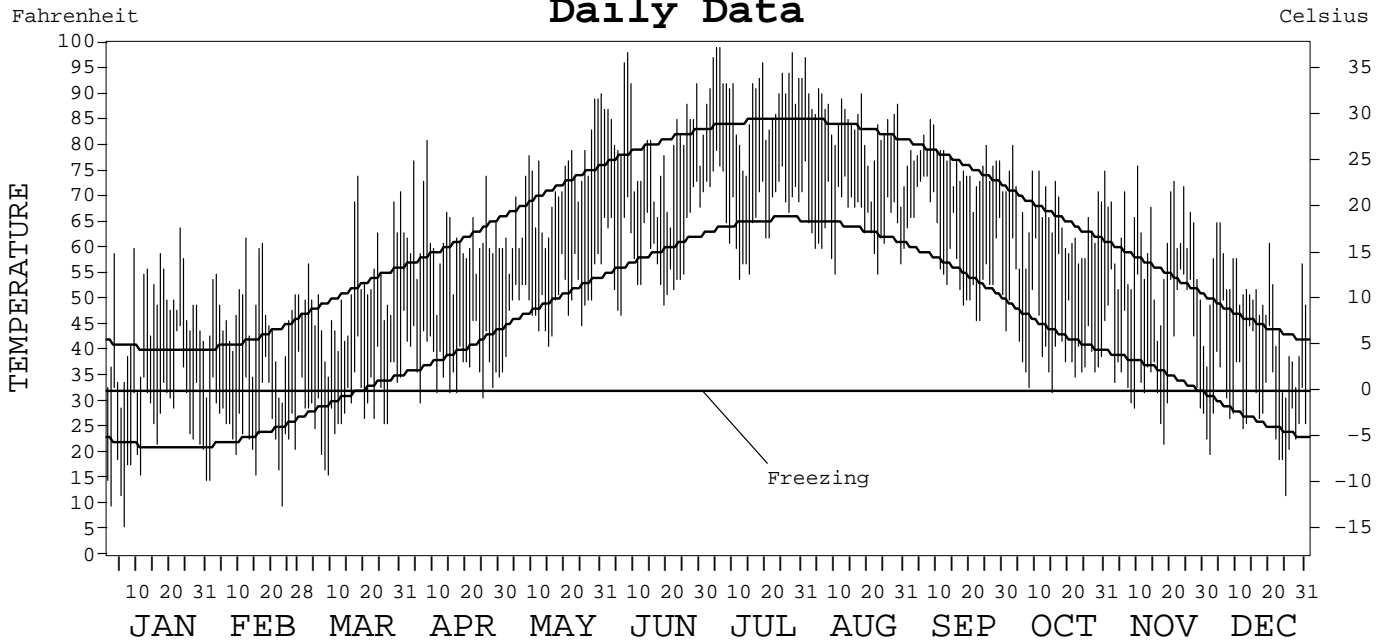
LOCAL CLIMATOLOGICAL DATA  
ANNUAL SUMMARY WITH COMPARATIVE DATA



ATLANTIC CITY, NEW JERSEY  
N.A.F.E.C. (ACY)

ISSN 0275-1763

Daily Data



I CERTIFY THAT THIS IS AN OFFICIAL PUBLICATION OF THE NATIONAL OCEANIC AND ATMOSPHERIC ADMINISTRATION, AND IS COMPILED FROM RECORDS ON FILE AT THE NATIONAL CLIMATIC DATA CENTER.

*Thomas R. Karl*

NATIONAL OCEANIC AND ATMOSPHERIC ADMINISTRATION	NATIONAL ENVIRONMENTAL AND INFORMATION SERVICE	NATIONAL SATELLITE, DATA, AND INFORMATION SERVICE	NATIONAL CLIMATIC DATA CENTER ASHEVILLE, NORTH CAROLINA	DIRECTOR NATIONAL CLIMATIC DATA CENTER
---	---	---	---	---

# METEOROLOGICAL DATA FOR 1999

## ATLANTIC CITY, NJ (ACY)

LATITUDE: 39° 27' 27" N      LONGITUDE: 74° 27' 24" W      ELEVATION (FT): GRND: 115      BARO: 115      TIME ZONE: EASTERN (UTC + 5)      WBAN: 93730

	ELEMENT	JAN	FEB	MAR	APR	MAY	JUN	JUL	AUG	SEP	OCT	NOV	DEC	YEAR	
TEMPERATURE °F	MEAN DAILY MAXIMUM	46.0	46.5	51.7	61.9	71.4	80.4	89.2	83.7	76.6	66.2	59.9	49.0	65.2	
	HIGHEST DAILY MAXIMUM	64	62	74	81	90	98	99	97	85	80	76	65	99	
	DATE OF OCCURRENCE	23	12	18	08	31	08	06+	01	08	03	10	05+	JUL 06+	
	MEAN DAILY MINIMUM	25.6	25.8	30.0	38.5	49.7	59.5	68.0	64.9	59.5	42.9	39.8	30.1	44.5	
	LOWEST DAILY MINIMUM	6	10	16	30	36	47	54	55	46	32	22	12	6	
	DATE OF OCCURRENCE	06	23	09	06	01	06	12	23+	23+	15	18	25	JAN 06	
	AVERAGE DRY BULB	35.8	36.2	40.9	50.2	60.6	70.0	78.6	74.3	68.1	54.6	49.9	39.6	54.9	
	MEAN WET BULB	33.4	33.6	35.6	44.8	54.6	63.6		68.4						
	MEAN DEW POINT	27.3	26.4	26.2	37.1	48.8	58.9		64.8						
	NUMBER OF DAYS WITH:														
	MAXIMUM ≥ 90°	0	0	0	0	1	4	19	5	0	0	0	0	0	29
	MAXIMUM ≤ 32°	3	2	0	0	0	0	0	0	0	0	0	0	2	7
	MINIMUM ≤ 32°	24	22	19	5	0	0	0	0	0	1	9	20	100	
MINIMUM ≤ 0°	0	0	0	0	0	0	0	0	0	0	0	0	0		
H/C	HEATING DEGREE DAYS	896	799	741	437	160	23	0	2	33	322	448	782	4643	
	COOLING DEGREE DAYS	0	0	0	0	30	180	430	301	131	6	1	0	1079	
RH	MEAN (PERCENT)	72	69	59	65	69	71	69	75	80	77	71	70	71	
	HOUR 01 LST	79	76	71	79	84	84	83	87	88	89	79	75	81	
	HOUR 07 LST	79	78	69	75	76	77	78	83	89	89	82	79	80	
	HOUR 13 LST	61	54	46	49	52	53	49	59	63	56	55	55	54	
	HOUR 19 LST	72	71	55	62	64	70	64	74	81	81	73	72	70	
S	PERCENT POSSIBLE SUNSHINE														
W/O	NUMBER OF DAYS WITH:														
	HEAVY FOG (VISBY ≤ 1/4 MI)	4	2	0	3	4	2	1	2	2	5	7	0	32	
	THUNDERSTORMS	0	0	0	0	0	0	0	3	0	0	0	0	3	
CLOUDINESS	SUNRISE-SUNSET: (OKTAS)														
	CEILOMETER (≤ 12,000 FT.)														
	SATELLITE (> 12,000 FT.)														
	MIDNIGHT-MIDNIGHT: (OKTAS)														
	CEILOMETER (≤ 12,000 FT.)														
	SATELLITE (> 12,000 FT.)														
NUMBER OF DAYS WITH:															
CLEAR															
PARTLY CLOUDY															
CLOUDY															
PR	MEAN STATION PRESS. (IN.)	30.10	29.99	29.91	29.90	29.96	30.01	29.91	29.89	29.93	30.06		29.97		
	MEAN SEA-LEVEL PRESS. (IN.)	30.17	30.06	29.98	29.97	30.03	30.08		29.95						
WINDS	RESULTANT SPEED (MPH)	2.0				2.4	2.2	1.7	1.0	1.7	2.3		3.8		
	RES. DIR. (TENS OF DEGS.)	25				03	12	19	14	09	26		28		
	MEAN SPEED (MPH)	9.6	8.8	12.7	9.1	8.9	8.1	7.9	7.9	9.0	6.7	6.9	8.7	8.7	
	PREVAIL. DIR. (TENS OF DEGS.)	27	36	36	36	05	18	19	17	15	36	36	31	36	
	MAXIMUM 2-MINUTE WIND:														
	SPEED (MPH)	36	31	37	29	31	22	25	26	33	36	31	36	37	
	DIR. (TENS OF DEGS.)	28	30	31	28	04	30	20	05	29	32	29	29	31	
	DATE OF OCCURRENCE	18	12	18	14+	02	08	02	31+	30	14	16	10	MAR 18	
	MAXIMUM 5-SECOND WIND:														
	SPEED (MPH)	46	37	45	38	41	29	34	34	45	44	36	46	46	
DIR. (TENS OF DEGS.)	27	30	31	30	03	06	30	05	30	32	28	32	32		
DATE OF OCCURRENCE	18	05	18	14	02	12	19	31	30	14	16	10	DEC 10		
PRECIPITATION	WATER EQUIVALENT:														
	TOTAL (IN.)	5.78	2.88	4.56	3.22	1.45	2.84	1.68	6.28	4.91	3.45	1.46	2.75	41.26	
	GREATEST 24-HOUR (IN.)	1.61	0.81	1.77	0.93	0.41	2.06	0.70	2.82	2.43	1.32	0.64	1.05	2.82	
	DATE OF OCCURRENCE	14-15	18	14-15	09	24	20-21	13	20	16	17-18	25	14	AUG 20	
	NUMBER OF DAYS WITH:														
	PRECIPITATION ≥ 0.01	10	8	12	13	7	9	5	11	9	9	4	8	105	
PRECIPITATION ≥ 0.10	8	7	9	10	4	3	3	4	7	6	3	5	69		
PRECIPITATION ≥ 1.00	3	0	1	0	0	1	0	2	1	1	0	1	10		
SNOWFALL	SNOW, ICE PELLETS, HAIL:														
	TOTAL (IN.)														
	GREATEST 24-HOUR (IN.)														
	DATE OF OCCURRENCE														
	MAXIMUM SNOW DEPTH (IN.)														
	DATE OF OCCURRENCE														
NUMBER OF DAYS WITH:															
SNOWFALL ≥ 1.0															

# NORMALS, MEANS, AND EXTREMES

## ATLANTIC CITY, NJ (ACY)

LATITUDE: 39° 27' 27" N      LONGITUDE: 74° 27' 24" W      ELEVATION (FT): GRND: 115      BARO: 115      TIME ZONE: EASTERN (UTC + 5)      WBAN: 93730

ELEMENT		POR	JAN	FEB	MAR	APR	MAY	JUN	JUL	AUG	SEP	OCT	NOV	DEC	YEAR
TEMPERATURE °F	NORMAL DAILY MAXIMUM	30	40.4	42.5	51.6	60.7	71.2	80.0	84.5	83.3	76.6	66.0	55.7	45.3	63.1
	MEAN DAILY MAXIMUM	41	41.0	43.1	51.1	61.5	71.1	80.3	84.7	83.3	76.8	66.3	55.8	45.5	63.4
	HIGHEST DAILY MAXIMUM	56	78	75	87	94	99	106	104	102	99	90	84	77	106
	YEAR OF OCCURRENCE		1967	1985	1998	1969	1969	1969	1966	1948	1983	1959	1950	1998	JUN 1969
	MEAN OF EXTREME MAXS.	41	61.1	62.9	72.9	81.8	88.7	93.6	95.6	93.5	89.6	81.4	72.7	63.3	79.8
	NORMAL DAILY MINIMUM	30	21.4	23.5	31.3	39.3	49.6	58.7	64.8	63.5	55.5	43.7	35.8	26.3	42.8
	MEAN DAILY MINIMUM	41	22.6	24.1	31.4	40.0	49.7	59.0	65.5	63.8	56.3	44.3	36.0	26.6	43.3
	LOWEST DAILY MINIMUM	56	-10	-11	5	12	25	37	42	40	32	20	10	-7	-11
	YEAR OF OCCURRENCE		1977	1979	1984	1969	1966	1980	1988	1976	1969	1988	1989	1950	FEB 1979
	MEAN OF EXTREME MINS.	41	3.7	6.2	15.3	25.4	34.9	45.0	53.0	50.5	39.8	29.2	19.9	9.3	27.7
	NORMAL DRY BULB	30	30.9	33.0	41.5	50.0	60.4	69.4	74.7	73.4	66.1	54.9	45.8	35.8	53.0
	MEAN DRY BULB	41	31.8	33.7	41.2	50.7	60.5	69.5	75.1	73.5	66.5	55.3	45.9	36.0	53.3
	MEAN WET BULB	15	30.4	32.0	37.2	45.5	54.9	64.2	69.8	68.1	61.8	51.5	42.4	31.5	49.1
	MEAN DEW POINT	15	24.3	25.1	30.0	39.0	49.8	59.9	66.6	65.2	58.5	47.2	37.0	25.9	44.0
	NORMAL NO. DAYS WITH:														
MAXIMUM ≥ 90°	30	0.0	0.0	0.0	0.2	0.8	3.6	6.9	4.5	1.6	0.0	0.0	0.0	17.6	
MAXIMUM ≤ 32°	30	7.7	5.0	0.6	0.0	0.0	0.0	0.0	0.0	0.0	0.0	0.1	3.6	17.0	
MINIMUM ≤ 32°	30	25.6	21.9	16.7	5.9	0.3	0.0	0.0	0.0	0.1	3.4	12.1	22.4	108.4	
MINIMUM ≤ 0°	30	0.9	0.5	0.0	0.0	0.0	0.0	0.0	0.0	0.0	0.0	0.0	0.2	1.6	
H/C	NORMAL HEATING DEG. DAYS	30	1057	896	729	450	167	12	0	0	53	324	576	905	5169
	NORMAL COOLING DEG. DAYS	30	0	0	0	0	25	144	301	260	86	10	0	0	826
RH	NORMAL (PERCENT)	30	70	69	67	66	71	73	74	76	76	75	73	71	72
	HOUR 01 LST	30	75	76	76	77	83	86	86	88	88	85	80	77	81
	HOUR 07 LST	30	77	78	77	76	78	81	83	86	87	87	83	78	81
	HOUR 13 LST	30	58	56	53	51	55	56	57	58	58	55	57	58	56
	HOUR 19 LST	30	70	68	65	64	68	70	71	74	78	77	74	71	71
S	PERCENT POSSIBLE SUNSHINE	36	50	53	55	56	56	60	61	65	61	59	51	47	56
W/O	MEAN NO. DAYS WITH:														
	HEAVY FOG (VISBY ≤ 1/4 MI)	41	3.0	3.2	3.4	3.7	4.3	4.1	3.4	3.1	3.0	4.1	3.1	2.4	40.8
	THUNDERSTORMS	41	0.2	0.4	1.1	2.0	3.3	4.4	5.9	4.9	1.9	0.8	0.5	0.2	25.6
CLOUDINESS	MEAN:														
	SUNRISE-SUNSET (OKTAS)														
	MIDNIGHT-MIDNIGHT (OKTAS)														
	MEAN NO. DAYS WITH:														
	CLEAR														
	PARTLY CLOUDY														
	CLOUDY														
PR	MEAN STATION PRESSURE (IN)	26	30.00	29.99	29.90	29.90	29.90	29.90	29.90	30.00	30.00	30.00	30.01	29.99	29.96
	MEAN SEA-LEVEL PRES. (IN)	15	30.07	30.05	30.03	29.96	29.97	29.96	29.99	30.02	30.06	30.09	30.10	30.09	30.03
WINDS	MEAN SPEED (MPH)	24	10.6	10.8	11.5	11.3	9.9	8.7	8.1	7.7	8.3	8.6	10.1	10.0	9.6
	PREVAIL. DIR (TENS OF DEGS)	20	29	30	30	30	18	18	18	18	36	31	30	30	30
	MAXIMUM 2-MINUTE:														
	SPEED (MPH)	4	40	40	40	36	34	36	41	31	33	37	36	37	41
	DIR. (TENS OF DEGS)		05	29	29	31	28	30	31	14	29	04	28	27	31
	YEAR OF OCCURRENCE		1996	1996	1996	1997	1997	1998	1997	1997	1999	1996	1997	1996	JUL 1997
	MAXIMUM 5-SECOND:														
SPEED (MPH)	4	55	53	51	54	45	46	55	38	45	47	44	52	55	
DIR. (TENS OF DEGS)		04	18	30	23	03	31	30	14	30	04	31	27	30	
YEAR OF OCCURRENCE		1996	1997	1997	1996	1998	1998	1997	1997	1999	1996	1997	1996	JUL 1997	
PRECIPITATION	NORMAL (IN)	30	3.46	3.06	3.62	3.56	3.33	2.64	3.83	4.14	2.93	2.82	3.58	3.32	40.29
	MAXIMUM MONTHLY (IN)	56	7.71	5.98	9.25	7.95	11.51	6.36	13.09	16.06	6.27	7.50	9.65	7.33	16.06
	YEAR OF OCCURRENCE		1948	1958	1994	1952	1948	1970	1959	1997	1966	1943	1972	1969	AUG 1997
	MINIMUM MONTHLY (IN)	56	0.26	0.82	0.62	0.84	0.40	0.10	0.51	0.34	0.41	0.15	0.68	0.62	0.10
	YEAR OF OCCURRENCE		1955	1980	1945	1976	1957	1954	1983	1943	1970	1963	1976	1955	JUN 1954
	MAXIMUM IN 24 HOURS (IN)	56	2.86	2.59	2.80	3.37	4.15	2.91	6.46	6.40	3.98	2.95	3.93	2.75	6.46
	YEAR OF OCCURRENCE		1944	1966	1994	1952	1959	1952	1959	1997	1954	1958	1953	1951	JUL 1959
	NORMAL NO. DAYS WITH:														
PRECIPITATION ≥ 0.01	30	10.5	9.8	10.2	10.4	10.0	8.8	8.6	8.7	7.7	7.1	9.6	10.1	111.5	
PRECIPITATION ≥ 1.00	30	0.7	0.6	1.1	0.9	0.7	0.7	1.0	1.2	0.9	0.9	0.9	0.8	10.4	
SNOWFALL	NORMAL (IN)	30	6.3	6.8	2.1	0.4	T	0.0	0.0	0.0	0.0	T	0.5	2.3	18.4
	MAXIMUM MONTHLY (IN)	52	20.3	35.2	17.6	3.9	T	T	T	0.0	0.0	T	7.8	9.3	35.2
	YEAR OF OCCURRENCE		1987	1967	1969	1990	1989	1994	1991			1990	1967	1989	FEB 1967
	MAXIMUM IN 24 HOURS (IN)	52	16.3	17.1	11.5	3.9	T	T	T	0.0	0.0	T	7.8	7.5	17.1
	YEAR OF OCCURRENCE		1987	1979	1969	1990	1989	1994	1991			1990	1967	1960	FEB 1979
	MAXIMUM SNOW DEPTH (IN)	37	19	23	11	3	0	0	0	0	0	0	6	7	23
	YEAR OF OCCURRENCE		1987	1979	1969	1990							1989	1982	FEB 1979
NORMAL NO. DAYS WITH:															
SNOWFALL ≥ 1.0	30	1.9	1.6	0.6	0.1	0.0	0.0	0.0	0.0	0.0	0.0	0.1	0.6	4.9	

PRECIPITATION (inches) 1999 ATLANTIC CITY, NEW JERSEY NJ (ACY)

YEAR	JAN	FEB	MAR	APR	MAY	JUN	JUL	AUG	SEP	OCT	NOV	DEC	ANNUAL
1970	1.50	3.08	3.11	4.66	1.81	6.36	2.83	2.70	0.41	3.73	5.73	3.04	38.96
1971	2.67	5.26	1.64	1.29	1.88	0.69	3.65	10.40	4.39	4.20	5.02	2.08	43.17
1972	2.93	4.31	3.59	4.62	3.51	4.82	2.81	0.44	3.66	5.11	9.65	3.63	49.08
1973	3.26	3.63	3.08	4.39	3.08	4.32	3.28	2.05	4.73	2.74	1.43	5.48	41.47
1974	3.47	2.40	4.62	2.66	2.61	2.52	1.99	5.50	2.95	1.90	1.08	4.76	36.46
1975	5.94	3.08	3.84	3.90	5.44	3.86	6.02	5.01	5.16	1.76	3.76	2.53	50.30
1976	4.52	2.70	1.39	0.84	3.61	0.97	2.23	4.70	3.06	6.60	0.68	2.52	33.82
1977	3.45	1.41	3.42	2.13	0.64	1.53	2.79	6.49	2.97	4.19	4.75	4.69	38.46
1978	5.70	1.11	5.17	1.53	6.71	3.00	5.77	6.82	1.51	1.21	2.96	3.52	45.01
1979	7.13	5.76	3.62	2.98	2.80	3.15	7.63	4.11	3.32	2.19	3.23	2.19	48.11
1980	2.63	0.82	6.38	5.40	1.61	3.58	2.47	2.63	1.74	3.20	3.63	0.75	34.84
1981	0.56	3.72	1.41	6.20	3.18	4.91	1.28	3.25	1.96	2.96	1.12	3.94	34.49
1982	4.11	2.06	2.70	3.85	2.42	3.03	3.62	1.63	1.34	1.14	4.17	2.85	32.92
1983	2.46	3.32	5.85	7.45	5.21	3.01	0.51	2.90	2.22	3.48	6.70	5.06	48.17
1984	2.41	3.70	5.92	4.84	6.58	1.62	4.35	2.44	1.31	1.46	3.02	1.79	39.44
1985	2.07	1.71	2.38	1.02	5.04	1.55	4.36	3.94	2.26	0.90	3.81	0.93	29.97
1986	3.73	3.42	1.88	4.57	0.54	2.41	4.50	3.35	2.39	3.90	5.04	4.85	40.58
1987	6.23	1.54	3.36	5.83	2.96	2.10	6.12	2.64	3.51	2.56	2.27	2.19	41.31
1988	2.99	3.80	2.21	1.77	3.20	1.03	4.58	2.78	3.07	2.76	4.65	0.64	33.48
1989	2.41	3.47	4.67	4.55	4.64	3.74	6.40	5.68	5.92	4.45	2.87	1.61	50.41
1990	2.70	1.00	2.60	3.46	5.71	1.52	3.64	5.96	1.91	2.63	2.01	3.57	36.71
1991	5.12	1.21	5.52	3.07	0.85	1.43	5.28	3.44	2.62	1.36	0.76	3.75	34.41
1992	0.92	2.12	2.94	1.58	2.34	3.59	3.39	6.64	5.04	1.26	3.10	3.96	36.88
1993	2.62	2.38	8.80	2.23	2.24	1.36	1.76	5.40	2.67	3.82	1.20	4.22	38.70
1994	4.13	3.54	9.25	2.03	3.48	0.71	4.11	5.37	3.78	0.82	3.09	2.18	42.49
1995	2.85	1.84	0.93	2.17	4.82	3.11	2.07	3.24	3.90	5.16	4.12	1.49	35.70
1996	3.59	2.05	3.65	4.45	4.51	3.94	4.63	4.31	5.82	5.03	1.38	7.10	50.46
1997	2.76	3.09	5.33	4.31	2.69	2.20	5.89	16.06	1.55	2.67	4.54	4.25	55.34
1998	5.78	4.89	6.49	3.27	6.68	2.77	1.40	1.77	0.49	3.10	1.26	2.02	39.92
1999	5.78	2.88	4.56	3.22	1.45	2.84	1.68	6.28	4.91	3.45	1.46	2.75	41.26
POR= 41 YRS	3.44	2.99	4.00	3.37	3.30	2.53	4.12	4.57	3.02	2.95	3.19	3.28	40.76

WBAN : 93730

AVERAGE TEMPERATURE (°F) 1999 ATLANTIC CITY, NEW JERSEY NJ (ACY)

YEAR	JAN	FEB	MAR	APR	MAY	JUN	JUL	AUG	SEP	OCT	NOV	DEC	ANNUAL
1970	26.9	33.8	38.2	49.6	61.5	68.9	73.7	73.9	69.4	58.2	47.6	36.5	53.2
1971	28.8	35.7	39.0	47.6	57.6	69.7	72.0	70.4	67.5	60.7	44.5	41.1	52.9
1972	33.9	32.5	38.4	46.5	59.1	66.1	75.6	73.5	68.2	51.6	44.3	42.5	52.7
1973	36.2	34.7	48.0	51.3	58.8	72.5	75.1	75.9	66.4	57.4	47.4	39.9	55.3
1974	39.3	33.2	44.4	54.5	60.3	68.0	75.0	74.2	65.9	52.2	46.3	39.0	54.4
1975	37.2	36.5	40.1	45.9	63.3	69.6	74.5	73.8	62.8	57.0	47.9	35.5	53.7
1976	28.4	39.5	43.2	51.5	57.4	69.6	72.5	71.4	64.9	51.2	39.6	30.1	51.6
1977	19.7	32.8	45.8	52.5	61.7	67.5	75.3	75.3	69.5	54.9	49.6	35.4	53.3
1978	30.4	23.8	38.1	49.3	57.2	68.7	72.1	76.5	63.4	53.1	47.8	37.9	51.5
1979	31.5	21.7	44.8	51.2	62.9	66.9	74.6	72.7	65.6	54.4	48.7	38.0	52.8
1980	30.8	28.6	38.7	51.6	61.6	64.3	72.4	73.1	67.9	52.3	41.3	31.2	51.2
1981	22.8	34.2	36.7	50.4	57.8	70.2	76.5	73.8	67.6	53.4	44.8	34.4	51.9
1982	26.4	36.8	43.1	49.8	64.1	69.9	76.9	71.8	64.8	55.2	48.5	41.0	54.0
1983	33.4	35.5	44.9	51.7	60.3	70.7	78.7	75.9	67.9	56.5	46.5	33.9	54.7
1984	28.0	40.1	36.6	49.7	60.7	73.6	75.3	77.1	65.9	62.3	44.6	44.0	54.8
1985	26.8	35.4	44.8	55.1	64.5	70.0	76.9	73.7	68.4	58.1	53.4	33.1	55.0
1986	32.6	32.1	43.0	50.0	63.1	70.5	75.9	71.9	66.3	56.6	44.7	37.9	53.7
1987	31.7	31.0	42.0	49.4	61.3	71.9	76.6	72.0	66.8	50.7	47.4	38.4	53.3
1988	27.9	34.3	42.2	48.7	59.5	69.1	77.1	76.1	64.3	49.7	45.9	34.2	52.4
1989	36.3	33.8	40.6	49.4	59.9	72.2	74.0	73.3	67.3	57.2	44.2	24.7	52.7
1990	40.6	40.5	44.5	51.3	59.2	70.2	75.1	73.4	64.5	59.2	48.0	41.4	55.7
1991	33.7	38.4	43.9	53.3	66.0	71.1	76.9	75.6	65.4	56.4	46.5	38.9	55.5
1992	34.2	35.7	39.5	49.3	57.0	66.5	73.9	70.5	66.1	51.8	46.0	37.4	52.3
1993	37.3	30.5	38.7	50.5	61.2	69.1	76.5	73.5	67.0	53.3	45.3	35.2	53.2
1994	27.6	31.6	41.0	55.0	57.4	72.4	77.6	70.4	64.3	53.2	49.5	40.4	53.4
1995	37.8	31.6	43.1	49.6	59.7	68.3	77.0	73.4	66.5	58.8	41.5	31.9	53.3
1996	31.3	33.2	36.6	51.2	59.0	70.9	73.0	71.8	67.8	54.5	40.1	39.7	52.4
1997	32.4	39.3	42.1	48.8	57.5	67.5	74.9	71.6	65.2	54.2	43.1	37.0	52.8
1998	40.3	40.2	44.3	52.6	62.8	69.7	75.2	75.0	69.3	56.1	45.5	39.9	55.9
1999	35.8	36.2	40.9	50.2	60.6	70.0	78.6	74.3	68.1	54.6	49.9	39.6	54.9
POR= 41 YRS	31.7	33.7	41.2	50.8	60.5	69.6	75.0	73.5	66.5	55.2	45.9	36.0	53.3

HEATING DEGREE DAYS (base 65°F) 1999 ATLANTIC CITY, NEW JERSEY NJ (ACY)

YEAR	JUL	AUG	SEP	OCT	NOV	DEC	JAN	FEB	MAR	APR	MAY	JUN	TOTAL
1970-71	0	0	49	224	515	876	1117	814	798	514	228	29	5164
1971-72	4	15	47	143	620	736	958	936	816	550	187	44	5056
1972-73	5	8	28	410	612	691	885	842	523	414	207	3	4628
1973-74	0	0	64	245	519	773	788	885	632	329	184	27	4446
1974-75	0	0	68	393	557	800	857	790	763	566	121	17	4932
1975-76	0	2	108	251	505	904	1128	733	668	409	242	55	5005
1976-77	0	17	71	424	757	1075	1398	895	587	380	145	42	5791
1977-78	2	0	28	311	457	910	1069	1146	826	463	256	24	5492
1978-79	6	0	116	365	512	831	1032	1208	623	406	110	39	5248
1979-80	6	19	80	341	483	830	1053	1050	808	394	145	102	5311
1980-81	3	5	38	392	705	1042	1299	855	871	436	251	14	5911
1981-82	0	0	47	356	600	940	1187	787	670	448	79	13	5127
1982-83	0	14	64	318	498	740	973	820	617	405	166	16	4631
1983-84	0	6	94	288	547	958	1137	714	874	451	171	8	5248
1984-85	0	0	80	129	604	646	1179	821	621	319	106	14	4519
1985-86	0	0	53	225	346	981	997	915	674	444	157	25	4817
1986-87	0	30	56	289	600	834	1023	947	705	459	194	6	5143
1987-88	0	10	46	436	520	814	1145	885	698	481	200	68	5303
1988-89	5	9	79	476	565	949	883	867	751	464	184	3	5235
1989-90	0	1	67	260	617	1239	747	680	630	421	188	19	4869
1990-91	1	1	90	240	504	722	963	737	649	362	119	25	4413
1991-92	0	0	102	281	550	803	949	839	785	468	269	44	5090
1992-93	3	0	73	407	565	849	852	961	806	429	150	39	5134
1993-94	0	0	79	353	591	918	1150	932	735	307	250	14	5329
1994-95	0	15	73	359	458	755	835	929	674	456	185	14	4753
1995-96	0	1	50	223	702	1020	1038	917	872	412	238	19	5492
1996-97	0	1	46	318	738	776	1007	714	703	479	236	94	5112
1997-98	1	0	79	346	652	860	757	688	652	364	140	28	4567
1998-99	0	0	36	270	579	770	896	799	741	437	160	23	4711
1999-	0	2	33	322	448	782							

WBAN : 93730

COOLING DEGREE DAYS (base 65°F) 1999 ATLANTIC CITY, NEW JERSEY NJ (ACY)

YEAR	JAN	FEB	MAR	APR	MAY	JUN	JUL	AUG	SEP	OCT	NOV	DEC	ANNUAL
1970	0	0	0	0	63	136	279	285	187	20	0	0	970
1971	0	0	0	0	6	178	228	191	129	17	12	0	761
1972	0	0	0	0	11	83	341	282	132	4	0	0	853
1973	0	0	0	10	21	233	321	345	113	20	0	0	1063
1974	0	0	0	19	44	121	319	292	103	2	6	0	906
1975	0	0	0	0	74	164	305	282	48	10	0	0	883
1976	0	0	0	13	15	201	238	221	74	3	0	0	765
1977	0	0	2	15	51	120	328	325	168	7	2	0	1018
1978	0	0	0	0	19	143	233	364	74	4	0	0	837
1979	0	0	5	0	50	103	308	266	103	15	0	0	850
1980	0	0	0	0	47	88	238	262	132	6	0	0	773
1981	0	0	0	6	31	177	364	279	132	1	0	0	990
1982	0	0	0	0	56	165	375	231	64	23	9	0	923
1983	0	0	0	15	30	196	431	350	190	33	0	0	1245
1984	0	0	0	0	43	273	326	382	115	53	0	1	1193
1985	0	0	3	30	99	170	376	278	163	18	3	0	1140
1986	0	0	0	0	104	198	343	250	99	38	0	0	1032
1987	0	0	0	0	87	217	366	231	106	0	0	0	1007
1988	0	0	0	0	38	197	388	360	63	5	0	0	1051
1989	0	0	3	1	35	225	289	267	145	23	2	0	990
1990	0	0	4	15	16	180	319	270	84	67	0	0	955
1991	0	0	2	15	154	216	376	334	119	19	2	0	1237
1992	0	0	0	3	27	98	287	178	110	6	0	0	709
1993	0	0	0	0	44	171	366	271	146	0	5	0	1003
1994	0	0	0	18	22	245	398	189	60	0	0	0	932
1995	0	0	0	1	28	122	379	271	100	41	4	0	946
1996	0	0	0	7	58	200	252	215	136	1	0	0	869
1997	0	0	0	0	12	178	315	211	91	19	0	0	826
1998	0	0	17	0	79	175	325	316	171	5	0	0	1088
1999	0	0	0	0	30	180	430	301	131	6	1	0	1079

SNOWFALL (inches) 1999 ATLANTIC CITY, NEW JERSEY NJ (ACY)

YEAR	JUL	AUG	SEP	OCT	NOV	DEC	JAN	FEB	MAR	APR	MAY	JUN	TOTAL
1970-71	0.0	0.0	0.0	0.0	0.0	1.4	7.2	1.9	0.9	T	0.0	0.0	11.4
1971-72	0.0	0.0	0.0	0.0	0.0	0.1	2.9	5.9	T	T	0.0	0.0	8.9
1972-73	0.0	0.0	0.0	T	T	T	0.0	0.4	T	T	0.0	0.0	0.4
1973-74	0.0	0.0	0.0	0.0	0.1	T	0.4	9.9	T	T	0.0	0.0	10.4
1974-75	0.0	0.0	0.0	0.0	0.2	T	3.3	1.6	2.0	T	0.0	0.0	7.1
1975-76	0.0	0.0	0.0	0.0	0.0	0.8	4.9	1.0	3.3	0.0	0.0	0.0	10.0
1976-77	0.0	0.0	0.0	0.0	T	4.0	7.8	0.5	0.0	0.0	T	0.0	12.3
1977-78	0.0	0.0	0.0	0.0	T	T	2.4	14.6	8.1	T	0.0	0.0	25.1
1978-79	0.0	0.0	0.0	0.0	1.2	T	14.2	27.7	T	0.0	0.0	0.0	43.1
1979-80	0.0	0.0	0.0	T	0.0	4.8	6.3	0.8	2.6	T	0.0	0.0	14.5
1980-81	0.0	0.0	0.0	T	T	0.1	3.2	0.0	T	0.0	0.0	0.0	3.3
1981-82	0.0	0.0	0.0	0.0	0.0	0.6	7.8	4.4	T	2.0	0.0	0.0	14.8
1982-83	0.0	0.0	0.0	0.0	0.0	6.7	T	14.9	T	0.7	0.0	0.0	22.3
1983-84	0.0	0.0	0.0	0.0	0.1	0.4	3.8	T	4.0	T	0.0	0.0	8.3
1984-85	0.0	0.0	0.0	0.0	T	T	15.1	0.0	T	1.3	0.0	0.0	16.4
1985-86	0.0	0.0	0.0	0.0	0.0	4.2	3.9	9.6	T	T	0.0	0.0	17.7
1986-87	0.0	0.0	0.0	0.0	0.0	T	20.3	10.7	1.6	0.7	0.0	0.0	33.3
1987-88	0.0	0.0	0.0	0.0	T	T	7.1	0.2	T	T	0.0	0.0	7.3
1988-89	0.0	0.0	0.0	0.0	0.0	0.4	0.9	12.8	3.4	T	T	0.0	17.5
1989-90	0.0	0.0	0.0	0.0	6.0	9.3	T	T	3.8	3.9	0.0	0.0	23.0
1990-91	0.0	0.0	0.0	T	0.0	3.1	4.7	1.7	T	0.0	0.0	0.0	9.5
1991-92	T	0.0	0.0	0.0	T	T	2.2	1.0	T	T	0.0	0.0	3.2
1992-93	0.0	0.0	0.0	0.0	0.0	0.2	0.8	6.0	3.7	T	0.0	0.0	10.7
1993-94	0.0	0.0	0.0	0.0	0.0	2.7	0.5	4.4	0.2	0.0	0.0	T	7.8
1994-95	0.0	0.0	0.0	0.0	T	0.0	T	0.8	0.0	0.0	0.0	0.0	0.8
1995-96	0.0	0.0	0.0	0.0	0.0								
1996-97													
1997-98													
1998-99													
1999-													
POR= 52 YRS	T	0.0	0.0	T	0.4	2.2	4.9	5.2	2.5	0.3	T	T	15.5

WBAN : 93730

REFERENCE NOTES:

<p>PAGE 1: THE TEMPERATURE GRAPH SHOWS NORMAL MAXIMUM AND NORMAL MINIMUM DAILY TEMPERATURES (SOLID CURVES) AND THE ACTUAL DAILY HIGH AND LOW TEMPERATURES (VERTICAL BARS).</p> <p>PAGE 2 AND 3: H/C INDICATES HEATING AND COOLING DEGREE DAYS. RH INDICATES RELATIVE HUMIDITY W/O INDICATES WEATHER AND OBSTRUCTIONS S INDICATES SUNSHINE. PR INDICATES PRESSURE. CLOUDINESS ON PAGE 3 IS THE SUM OF THE CEILOMETER AND SATELLITE DATA NOT TO EXCEED EIGHT EIGHTHS(OKTAS).</p> <p>GENERAL: T INDICATES TRACE PRECIPITATION, AN AMOUNT GREATER THAN ZERO BUT LESS THAN THE LOWEST REPORTABLE VALUE. + INDICATES THE VALUE ALSO OCCURS ON EARLIER DATES. BLANK ENTRIES DENOTE MISSING OR UNREPORTED DATA. NORMALS ARE 30-YEAR AVERAGES (1961 - 1990). ASOS INDICATES AUTOMATED SURFACE OBSERVING SYSTEM. PM INDICATES THE LAST DAY OF THE PREVIOUS MONTH. POR (PERIOD OF RECORD) BEGINS WITH THE JANUARY DATA MONTH AND IS THE NUMBER OF YEARS USED TO COMPUTE THE MEAN. INDIVIDUAL MONTHS WITHIN THE POR MAY BE MISSING. WHEN THE POR FOR A NORMAL IS LESS THAN 30 YEARS, THE NORMAL IS PROVISIONAL AND IS BASED ON THE NUMBER OF YEARS INDICATED. 0.* OR * INDICATES THE VALUE OR MEAN-DAYS-WITH IS BETWEEN 0.00 AND 0.05. CLOUDINESS FOR ASOS STATIONS DIFFERS FROM THE NON-ASOS OBSERVATION TAKEN BY A HUMAN OBSERVER. ASOS STATION CLOUDINESS IS BASED ON TIME-AVERAGED CEILOMETER DATA FOR CLOUDS AT OR BELOW 12,000 FEET AND ON SATELLITE DATA FOR CLOUDS ABOVE 12,000 FEET. THE NUMBER OF DAYS WITH CLEAR, PARTLY CLOUDY, AND CLOUDY CONDITIONS FOR ASOS STATIONS IS THE SUM OF THE CEILOMETER AND SATELLITE DATA FOR THE SUNRISE TO SUNSET PERIOD.</p>	<p>GENERAL CONTINUED: CLEAR INDICATES 0 - 2 OKTAS, PARTLY CLOUDY INDICATES 3 - 6 OKTAS, AND CLOUDY INDICATES 7 OR 8 OKTAS. WHEN AT LEAST ONE OF THE ELEMENTS (CEILOMETER OR SATELLITE) IS MISSING, THE DAILY CLOUDINESS IS NOT COMPUTED. WIND DIRECTION IS RECORDED IN TENS OF DEGREES (2 DIGITS) CLOCKWISE FROM TRUE NORTH. "00" INDICATES CALM. "36" INDICATES TRUE NORTH. RESULTANT WIND IS THE VECTOR AVERAGE OF THE SPEED AND DIRECTION. AVERAGE TEMPERATURE IS THE SUM OF THE MEAN DAILY MAXIMUM AND MINIMUM TEMPERATURE DIVIDED BY 2. SNOWFALL DATA COMPRISE ALL FORMS OF FROZEN PRECIPITATION, INCLUDING HAIL. A HEATING (COOLING) DEGREE DAY IS THE DIFFERENCE BETWEEN THE AVERAGE DAILY TEMPERATURE AND 65° F. DRY BULB IS THE TEMPERATURE OF THE AMBIENT AIR. DEW POINT IS THE TEMPERATURE TO WHICH THE AIR MUST BE COOLED TO ACHIEVE 100 PERCENT RELATIVE HUMIDITY. WET BULB IS THE TEMPERATURE THE AIR WOULD HAVE IF THE MOISTURE CONTENT WAS INCREASED TO 100 PERCENT RELATIVE HUMIDITY.</p> <p>ON JULY 1, 1996, THE NATIONAL WEATHER SERVICE BEGAN USING THE "METAR" OBSERVATION CODE THAT WAS ALREADY EMPLOYED BY MOST OTHER NATIONS OF THE WORLD. THE MOST NOTICEABLE DIFFERENCE IN THIS ANNUAL PUBLICATION WILL BE THE CHANGE IN UNITS FROM TENTHS TO EIGHTHS(OKTAS) FOR REPORTING THE AMOUNT OF SKY COVER.</p>
---	---

1999  
ATLANTIC CITY, NEW JERSEY  
N.A.F.E.C. (ACY)

The Atlantic City National Weather Service Office is located at the National Aviation Facilities Experimental Center, Pomona, which is about 10 miles west-northwest of Atlantic City and the Atlantic Ocean. The surrounding terrain is fairly flat at an elevation of 50 to 60 feet above sea level. Vegetation in the area consists of scrub pine and low underbrush, but clearing for the air facility has been quite extensive. Bays and salt marshes are as near as 6 miles east of the airport. Atlantic City is located on Abescon Island on the southeast coast of New Jersey. Surrounding terrain, composed of tidal marshes and beach sand, is flat and lies slightly above sea level. The climate is principally continental in character. However, the moderating influence of the Atlantic Ocean is apparent throughout the year, being more marked in the city than at the airport. As a result, summers are relatively cooler and winters milder than elsewhere at the same latitude.

Land and sea breezes, local circulations resulting from the differential heating and cooling of the land and sea, often prevail. These winds occur when moderate or intense storms are not present in the area, thus enabling the local circulation to overcome the general wind pattern. During the warm season sea breezes in the late morning and afternoon hours prevent excessive heating. Frequently, the temperature at Atlantic City during the afternoon hours in the summer averages

several degrees lower than at the airport and the airport averages several degrees lower than localities farther inland. On occasions, sea breezes have lowered the temperature as much as 15 to 20 degrees within a half hour. However, the major effect of the sea breeze at the airport is preventing the temperature from rising above the 80s. Because the change in ocean temperature lags behind the air temperature from season to season, the weather tends to remain comparatively mild late into the fall, but on the other hand, warming is retarded in the spring. Normal ocean temperatures range from an average near 37 degrees in January to near 72 degrees in August.

Precipitation is moderate and well distributed throughout the year, with June the driest month and August the wettest. Tropical storms or hurricanes occasionally bring excessive rainfall to the area. The bulk of winter precipitation results from storms which move northeastward along or near the east coast of the United States. Snowfall is considerably less than elsewhere at the same latitude and does not remain long on the ground. Precipitation, often beginning as snow, will frequently become mixed with or change to rain while continuing as snow over more interior sections. In addition, ice storms and resultant glaze are relatively infrequent.

# STATION LOCATION

ATLANTIC CITY, NEW JERSEY  
NATIONAL AVIATION FACILITIES  
EXPERIMENTAL CENTER

LOCATION	OCCUPIED FROM	OCCUPIED TO	AIRLINE DISTANCES AND DIRECTIONS FROM PREVIOUS LOCATION	LATITUDE NORTH	LONGITUDE WEST	ELEVATION ABOVE											* Type	REMARKS
						SEA LEVEL	GROUND											
							WINDSONG	EMERSON	RECORDED	SHORE	STATION	BEACH	RAILROAD	WATER	8 INCH	REMARKS		
<b>CITY</b>																		
U.S. Life Saving Sta. 27 S. Vermont Avenue	12/10/73	10/5/78	NA	39° 22'	74° 25'	8	27	4										
Apsley Cottage 10 S. Rhode Island Ave.	10/5/78	12/1/87	0.05 mi. W	39° 22'	74° 25'	8	40	10										
National Bank Building 1125 Atlantic Avenue	12/1/87	4/1/89	0.35 mi. W	39° 22'	74° 25'	10	50	52	52									
Real Estate & Law Bldg. 1421 Atlantic Avenue	4/1/89	1/22/02	0.15 mi. W	39° 22'	74° 25'	9	76	68	68									
U.S. Weather Bureau Building, 23 S. Rhode Island Avenue	1/22/02	7/21/58	0.5 mi. E	39° 22'	74° 25'	8	48 a172	39	37		33						a - Effective 12/17/21.	
Atlantic City State Marina	7/21/58	Present	1.1 mi. NW	39° 23'	74° 26'	11	42 b40	NA	NA	NA	26	NA	4	\$28	NA		Data remoted to airport office.	
<b>AIRPORT</b>																		
U.S. Naval Air Station Atlantic City, N.J.	7/1/43	6/16/58	10 mi. NW	39° 27'	74° 35'	61	73	23	23									
Weather Bureau Airport Station, National Aviation Facilities Experimental Center	6/16/58	10/25/68	Not moved	39° 27'	74° 35'	58 f64	73 d20	6	6	NA c65 g55	NA	2	2	e6	NA		Established as a new station.	
Building 301, National Aviation Facilities Experimental Center, Atlantic City Airport	10/25/68	09/01/95	0.75 mi. ENE	39° 27'	74° 34'	64	h20	NA	NA k74	55 j81	NA	143 i74 m75	143 174	h4	NA		c - Effective 6/1/60. d - Effective 2/1/62. e - Commissioned 4500', NNE of thermometer site 10/17/64. f - Effective 10/17/64. g - Effective 10/31/64. h - Not moved 10/25/68. i - Effective 11/1/68. j - Effective 11/20/68. k - Installed 12/19/72. m - Effective 9/12/73.	
Aviation Facilities Experimental Center	09/01/95	Present	NA	39° 27'	74° 27'	115									S		ASOS Commissioned 09/01/95	

SUBSCRIPTION:  
Price and ordering information available through: National Climatic Data Center, Federal Building, Asheville, North Carolina 28801.  
INQUIRIES/COMMENTS CALL: (828) 271-4800

National Climatic Data Center  
151 Patton Avenue, Rm 120  
Asheville NC 28801-5001

OFFICIAL BUSINESS  
PENALTY FOR PRIVATE USE \$300  
FORWARD AND ADDRESS CORRECTION

FIRST CLASS  
POSTAGE & FEES PAID  
United States Department of Commerce  
NOAA Permit No. G - 19