

1998

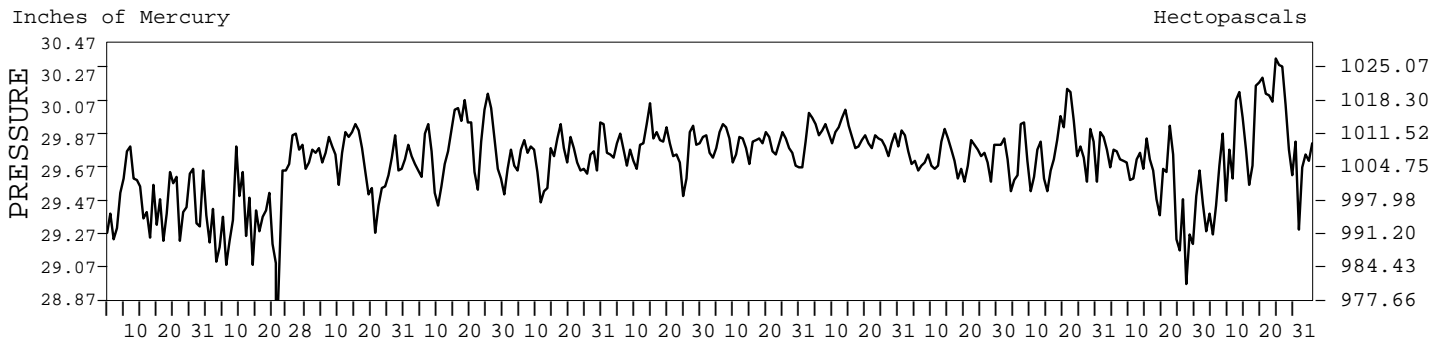
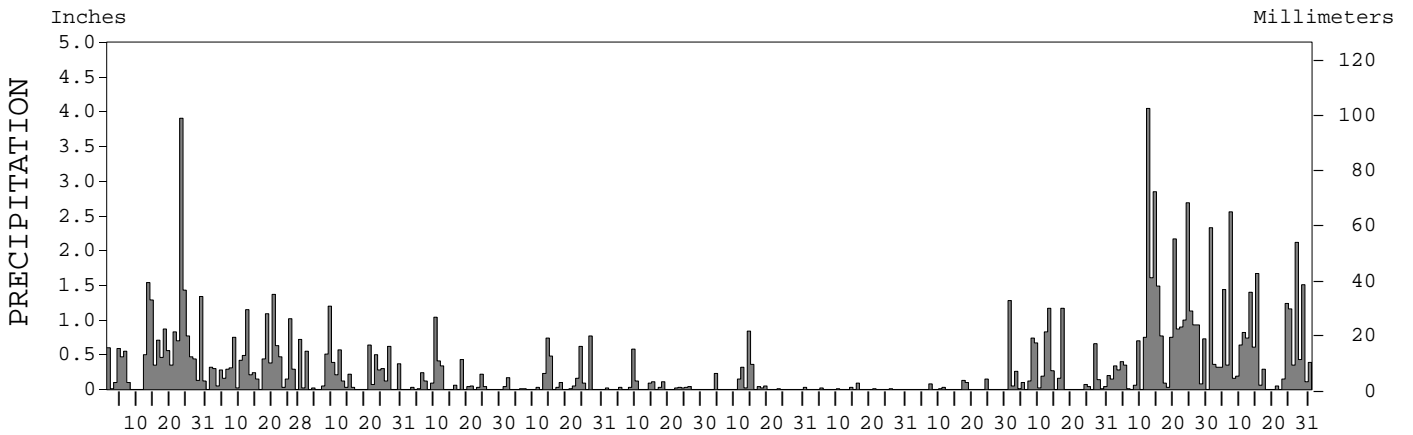
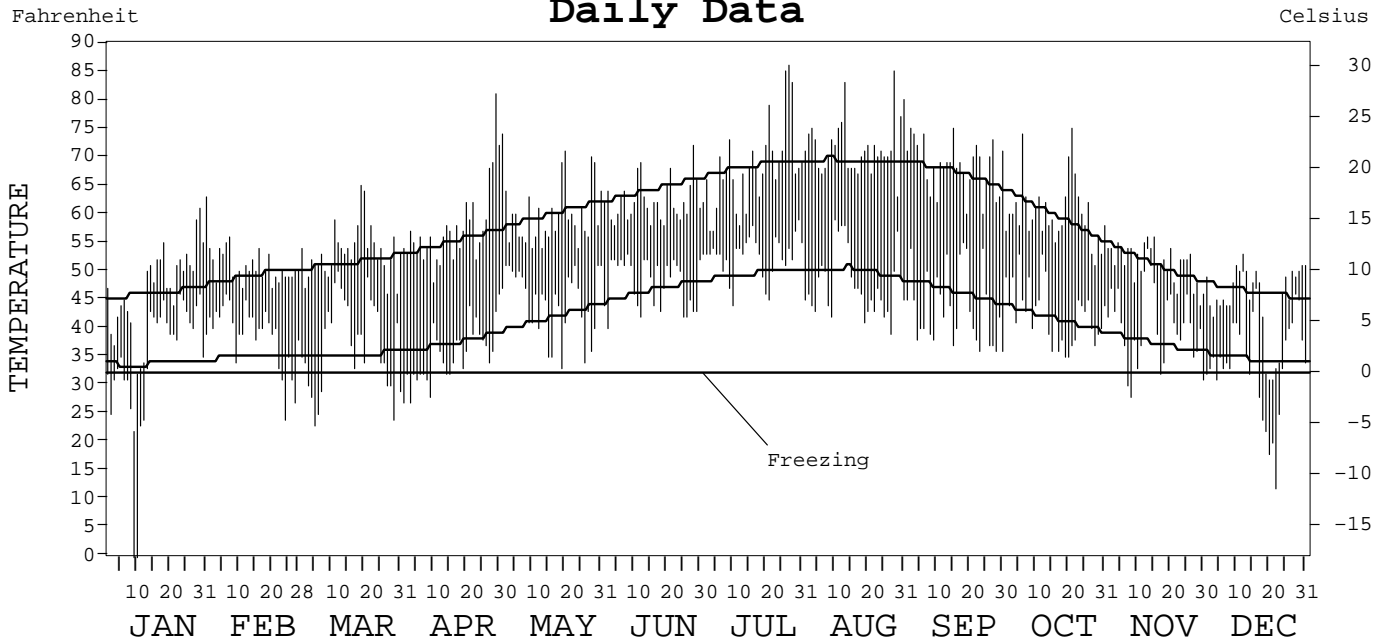
LOCAL CLIMATOLOGICAL DATA  
ANNUAL SUMMARY WITH COMPARATIVE DATA



ISSN 0198-5434

QUILLAYUTE AIRPORT  
WASHINGTON (UIL)

Daily Data



I CERTIFY THAT THIS IS AN OFFICIAL PUBLICATION OF THE NATIONAL OCEANIC AND ATMOSPHERIC ADMINISTRATION, AND IS COMPILED FROM RECORDS ON FILE AT THE NATIONAL CLIMATIC DATA CENTER.

*Thomas R. Karl*

NATIONAL OCEANIC AND ATMOSPHERIC ADMINISTRATION  
 NATIONAL ENVIRONMENTAL AND INFORMATION SERVICE  
 NATIONAL ENVIRONMENTAL AND INFORMATION SERVICE  
 NATIONAL CLIMATIC DATA CENTER  
 NATIONAL CLIMATIC DATA CENTER  
 DIRECTOR NATIONAL CLIMATIC DATA CENTER  
 ASHEVILLE, NORTH CAROLINA

# METEOROLOGICAL DATA FOR 1998

## QUILLAYUTE, WA (UIL)

LATITUDE: 47° 56' 03" N      LONGITUDE: 124° 33' 39" W      ELEVATION (FT): GRND: 179      BARO: 1816      TIME ZONE: PACIFIC (UTC+ 8)      WBAN: 94240

	ELEMENT	JAN	FEB	MAR	APR	MAY	JUN	JUL	AUG	SEP	OCT	NOV	DEC	YEAR	
TEMPERATURE °F	MEAN DAILY MAXIMUM		50.6	53.3	57.6	60.2	62.3	68.2	71.8	68.4	60.3	51.5	45.0		
	HIGHEST DAILY MAXIMUM	63	56	65	81	74	72	86	85	75	75	56	53	86	
	DATE OF OCCURRENCE	31	07	19	29	01	28	27	28	15+	21	15+	12	JUL 27	
	MEAN DAILY MINIMUM		38.7	37.0	35.4	44.5	47.9	52.6	47.7	43.6	42.5	40.3	34.1		
	LOWEST DAILY MINIMUM		24	23	27	33	40	44	39	36	35	28	12		
	DATE OF OCCURRENCE		24	05	03+	19	02	10	27	30+	20+	08	22		
	AVERAGE DRY BULB		44.7	45.2	46.5	52.4	55.1	60.4	59.8	56.0	51.4	45.9	39.6		
	MEAN WET BULB			42.9	43.3	49.6	52.9	57.5	56.8	53.2	49.2	45.3	39.0		
	MEAN DEW POINT			40.4	39.9	47.3	51.3	56.0	54.5	50.9	47.5	44.3	37.0		
	NUMBER OF DAYS WITH:														
	MAXIMUM ≥ 90°		0	0	0	0	0	0	0	0	0	0	0	0	0
	MAXIMUM ≤ 32°		1	0	0	0	0	0	0	0	0	0	3	4	4
	MINIMUM ≤ 32°		10	4	9	11	0	0	0	0	0	4	10	48	48
MINIMUM ≤ 0°		0	0	0	0	0	0	0	0	0	0	0	0	0	
H/C	HEATING DEGREE DAYS		563	608	549	385	288	148	169	266	413	567	777		
	COOLING DEGREE DAYS		0	0	0	0	0	11	13	0	0	0	0	0	
RH	MEAN (PERCENT)	88	87	87	80	85	89	89	84	86	89	94	90	87	
	HOUR 04 LST	90	87	95	96	96	96	97	97	97	95	97	92	95	
	HOUR 10 LST	90	88	83	68	79	85	85	74	77	86	94	91	83	
	HOUR 16 LST	83	81	73	61	72	77	78	67	69	79	91	87	76	
	HOUR 22 LST	89	92	93	91	90	95	95	94	95	94	96	91	93	
S	PERCENT POSSIBLE SUNSHINE														
W/O	NUMBER OF DAYS WITH:														
	HEAVY FOG (VISBY ≤ 1/4 MI) THUNDERSTORMS	3 0	0 0	3 0	1 0	3 0	6 0	4 0	6 0	9 0	7 0	3 0	2 0	47 0	
CLOUDINESS	SUNRISE-SUNSET: (OKTAS)														
	CEILOMETER (≤ 12,000 FT.)														
	SATELLITE (> 12,000 FT.)														
	MIDNIGHT-MIDNIGHT: (OKTAS)														
	CEILOMETER (≤ 12,000 FT.)														
SATELLITE (> 12,000 FT.)															
NUMBER OF DAYS WITH:															
CLEAR															
PARTLY CLOUDY															
CLOUDY															
PR	MEAN STATION PRESS. (IN.)	29.49		29.74	29.83	29.76	29.83	29.83	29.90	29.76	29.80	29.58	29.89		
	MEAN SEA-LEVEL PRESS. (IN.)			29.96	30.05	29.98	30.05	30.06	30.12	29.98	30.02	29.80	30.12		
WINDS	RESULTANT SPEED (MPH)	2.6		0.7	0.8	2.1	2.8	1.9	2.0	1.0	1.4	3.1	2.0		
	RES. DIR. (TENS OF DEGS.)	14		16	24	25	24	24	28	28	13	17	15		
	MEAN SPEED (MPH)	7.4	6.9	4.6	4.7	4.7	4.4	4.2	4.0	3.4	4.7	6.8	6.8	5.2	
	PREVAIL. DIR. (TENS OF DEGS.)	05	07	07	07	24	24	19	24	24	07	07	07	07	
	MAXIMUM 2-MINUTE WIND:														
	SPEED (MPH)	30	28	29	20	17	21	20	17	16	23	37	29	37	
	DIR. (TENS OF DEGS.)	22	15	19	24	20	27	18	27	20	28	24	04	24	
	DATE OF OCCURRENCE	14	20+	23	18+	14+	15	14	03	17	08	24	19	NOV 24	
	MAXIMUM 5-SECOND WIND:														
	SPEED (MPH)	47	46	44	29	23	28	31	22	22	33	51	40	51	
DIR. (TENS OF DEGS.)	16	17	18	20	13	29	19	35	35	30	23	16	23		
DATE OF OCCURRENCE	23	06	23	18	23	15	14	12	07	08	23	12+	NOV 23		
PRECIPITATION	WATER EQUIVALENT:														
	TOTAL (IN.)	19.19	11.73	6.82	3.15	3.54	1.26	2.07	0.17	0.50	8.20	26.11	21.77	104.51	
	GREATEST 24-HOUR (IN.)	4.21	1.47	1.24	1.34	0.88	0.68	0.94	0.09	0.15	1.28	4.16	2.56	4.21	
	DATE OF OCCURRENCE	22-23	20-21	08-09	10-11	13-14	09-10	14-15	16	24	01	12-13	07	JAN 22-23	
	NUMBER OF DAYS WITH:														
	PRECIPITATION ≥ 0.01	26	26	21	15	16	14	11	6	6	22	27	27	217	
PRECIPITATION ≥ 0.10	24	23	15	7	8	4	5	0	3	15	22	25	151		
PRECIPITATION ≥ 1.00	5	4	1	1	0	0	0	0	0	3	8	9	31		
SNOWFALL	SNOW, ICE PELLETS, HAIL:														
	TOTAL (IN.)														
	GREATEST 24-HOUR (IN.)														
	DATE OF OCCURRENCE														
	NUMBER OF DAYS WITH:														
SNOWFALL ≥ 1.0															

# NORMALS, MEANS, AND EXTREMES

## QUILLAYUTE, WA (UIL)

LATITUDE: 47° 56' 03" N      LONGITUDE: 124° 33' 39" W      ELEVATION (FT): GRND: 179      BARO: 1816      TIME ZONE: PACIFIC (UTC+ 8)      WBAN: 94240

ELEMENT		POR	JAN	FEB	MAR	APR	MAY	JUN	JUL	AUG	SEP	OCT	NOV	DEC	YEAR
TEMPERATURE °F	NORMAL DAILY MAXIMUM	30	46.0	49.1	51.4	55.0	59.9	64.2	68.2	69.1	67.0	59.4	50.9	46.2	57.2
	MEAN DAILY MAXIMUM	31	46.2	49.4	51.8	55.2	60.5	64.1	68.3	69.2	67.1	59.1	50.9	46.2	57.3
	HIGHEST DAILY MAXIMUM	32	65	73	72	83	92	96	97	99	97	83	69	64	99
	YEAR OF OCCURRENCE		1986	1992	1994	1987	1987	1982	1988	1981	1988	1988	1976	1969	AUG 1981
	MEAN OF EXTREME MAXS.	32	55.1	60.2	63.5	70.8	78.9	81.1	86.2	85.3	83.2	72.9	59.9	54.6	71.0
	NORMAL DAILY MINIMUM	30	33.7	34.9	35.2	37.3	41.8	46.5	49.4	49.7	46.2	41.4	37.2	34.4	40.6
	MEAN DAILY MINIMUM	32	33.1	35.1	35.7	37.8	42.5	46.9	49.9	49.8	46.6	41.3	37.6	34.5	40.9
	LOWEST DAILY MINIMUM	32	0	11	19	24	29	33	38	36	28	24	5	7	0
	YEAR OF OCCURRENCE		1998	1989	1989	1997	1977	1976	1977	1985	1972	1984	1985	1972	JAN 1998
	MEAN OF EXTREME MINS.	32	19.4	22.2	25.6	29.1	33.3	38.5	41.5	41.2	35.9	29.7	25.7	20.9	30.2
	NORMAL DRY BULB	30	39.9	42.0	43.3	46.2	50.9	55.4	58.8	59.4	56.6	50.4	44.1	40.3	48.9
	MEAN DRY BULB	31	40.2	42.3	43.8	46.6	51.6	55.6	59.0	59.5	56.9	50.2	44.3	40.4	49.2
	MEAN WET BULB	13	40.1	40.0	42.2	44.9	48.9	52.4	55.5	56.1	53.5	48.4	43.2	36.7	46.8
	MEAN DEW POINT	13	38.3	37.2	39.7	42.0	45.8	49.5	52.7	53.3	50.7	46.3	41.7	35.1	44.4
	NORMAL NO. DAYS WITH:														
MAXIMUM ≥ 90°	30	0.0	0.0	0.0	0.0	0.1	0.2	0.5	0.4	0.2	0.0	0.0	0.0	1.4	
MAXIMUM ≤ 32°	30	0.7	0.2	0.0	0.0	0.0	0.0	0.0	0.0	0.0	0.0	0.3	1.0	2.2	
MINIMUM ≤ 32°	30	13.1	10.6	10.0	5.6	0.5	0.0	0.0	0.0	0.2	3.4	7.4	12.8	63.6	
MINIMUM ≤ 0°	30	0.0	0.0	0.0	0.0	0.0	0.0	0.0	0.0	0.0	0.0	0.0	0.0	0.0	
H/C	NORMAL HEATING DEG. DAYS	30	778	644	673	564	437	288	192	180	256	453	627	766	5858
	NORMAL COOLING DEG. DAYS	30	0	0	0	0	0	0	0	6	0	0	0	0	6
RH	NORMAL (PERCENT)	30	88	86	84	81	80	80	80	82	82	87	89	90	84
	HOUR 04 LST	30	91	91	92	92	93	93	94	95	94	94	92	92	93
	HOUR 10 LST	30	90	87	82	75	73	74	74	76	76	85	89	91	81
	HOUR 16 LST	30	84	77	72	67	66	66	64	66	67	75	83	86	73
	HOUR 22 LST	30	90	90	90	88	88	87	88	90	90	92	92	92	90
S	PERCENT POSSIBLE SUNSHINE	30	22	30	34	35	37	35	43	44	47	34	21	19	33
W/O	MEAN NO. DAYS WITH:														
	HEAVY FOG (VISBY ≤ 1/4 MI)	31	3.8	3.2	3.4	2.2	3.0	2.8	4.4	7.6	6.8	6.6	3.7	3.5	51.0
	THUNDERSTORMS	31	0.6	0.3	0.4	0.4	0.2	0.1	0.5	0.3	0.6	1.0	1.5	0.9	6.8
CLOUDINESS	MEAN:														
	SUNRISE-SUNSET (OKTAS)	30	6.6	6.4	6.3	6.5	6.2	6.2	5.3	5.3	5.0	5.8	6.6	6.3	6.0
	MIDNIGHT-MIDNIGHT (OKTAS)	30	6.3	6.0	6.0	6.2	6.0	6.1	5.4	5.3	4.9	5.5	6.3	6.1	5.8
	MEAN NO. DAYS WITH:														
	CLEAR	30	3.4	3.8	3.5	2.8	2.6	3.5	6.0	6.1	7.7	4.9	2.6	3.6	50.5
PARTLY CLOUDY	30	3.1	3.6	5.9	5.7	8.0	6.8	8.3	8.7	7.7	7.1	4.9	3.8	73.6	
CLOUDY	30	24.5	20.9	21.6	21.5	20.4	19.7	15.7	15.2	13.8	18.2	21.6	23.6	236.7	
PR	MEAN STATION PRESSURE (IN)	25	29.79	29.78	29.75	29.82	29.83	29.84	29.87	29.83	29.82	29.83	29.76	29.81	29.81
	MEAN SEA-LEVEL PRES. (IN)	13	30.03	30.03	30.00	30.02	30.03	30.06	30.10	30.06	30.04	30.05	30.00	30.05	30.04
WINDS	MEAN SPEED (MPH)	18	6.6	6.5	6.4	6.0	5.8	5.5	5.3	4.9	4.6	5.1	6.3	6.3	5.8
	PREVAIL. DIR (TENS OF DEGS)	19	05	05	17	18	18	18	31	18	18	18	07	07	18
	MAXIMUM 2-MINUTE:														
	SPEED (MPH)	2	33	28	37	23	25	21	20	23	28	28	37	29	37
	DIR. (TENS OF DEGS)		18	27	16	19	24	27	20	03	20	22	24	04	24
	YEAR OF OCCURRENCE		1997	1997	1997	1997	1997	1998	1997	1997	1997	1997	1998	1998	NOV 1998
	MAXIMUM 5-SECOND:														
SPEED (MPH)	2	54	46	55	39	31	28	31	29	36	43	51	40	55	
DIR. (TENS OF DEGS)		17	17	17	19	21	29	19	02	20	17	23	16	17	
YEAR OF OCCURRENCE		1997	1998	1997	1997	1997	1998	1998	1997	1997	1997	1998	1998	MAR 1997	
PRECIPITATION	NORMAL (IN)	30	14.37	12.59	11.48	7.51	5.40	3.12	2.57	2.54	4.88	10.52	14.74	15.46	105.18
	MAXIMUM MONTHLY (IN)	32	23.99	20.60	21.86	13.90	12.45	8.83	11.02	15.07	12.82	27.17	29.14	27.82	29.14
	YEAR OF OCCURRENCE		1992	1982	1974	1992	1974	1997	1983	1991	1997	1975	1983	1979	NOV 1983
	MINIMUM MONTHLY (IN)	32	1.22	0.87	1.84	2.94	1.05	0.40	0.36	0.17	0.12	1.37	4.41	3.63	0.12
	YEAR OF OCCURRENCE		1985	1993	1992	1973	1972	1967	1985	1998	1991	1987	1976	1985	SEP 1991
	MAXIMUM IN 24 HOURS (IN)	32	8.32	5.07	4.23	2.77	3.54	3.25	6.45	4.70	4.13	5.54	5.70	6.76	8.32
	YEAR OF OCCURRENCE		1968	1982	1974	1968	1973	1997	1972	1991	1968	1975	1991	1972	JAN 1968
NORMAL NO. DAYS WITH:															
PRECIPITATION ≥ 0.01	30	22.5	19.4	21.3	19.1	16.9	13.8	11.5	10.4	12.5	18.0	22.2	22.9	210.5	
PRECIPITATION ≥ 1.00	30	4.4	3.7	3.5	1.5	1.1	0.5	0.5	0.6	1.5	3.5	4.6	5.1	30.5	
SNOWFALL	NORMAL (IN)	30	5.5	3.1	1.8	0.4	T	0.0	0.0	0.0	T	T	1.1	2.9	14.8
	MAXIMUM MONTHLY (IN)	30	40.1	16.1	10.2	2.8	T	T	0.0	0.0	T	T	15.6	11.6	40.1
	YEAR OF OCCURRENCE		1969	1990	1971	1975	1994	1988			1972	1996	1985	1972	JAN 1969
	MAXIMUM IN 24 HOURS (IN)	30	8.2	8.4	7.5	2.4	T	T	0.0	0.0	T	T	7.7	7.3	8.4
	YEAR OF OCCURRENCE		1969	1971	1989	1975	1994	1988			1972	1995	1985	1981	FEB 1971
	MAXIMUM SNOW DEPTH (IN)	29	17	12	7	0	0	0	0	0	0	0	6	6	17
	YEAR OF OCCURRENCE		1969	1969	1989								1985	1972	JAN 1969
NORMAL NO. DAYS WITH:															
SNOWFALL ≥ 1.0	30	1.8	1.0	0.5	0.1	0.0	0.0	0.0	0.0	0.0	0.0	0.4	0.9	4.7	

PRECIPITATION (inches) 1998 QUILLAYUTE AIRPORT WA (UIL)

YEAR	JAN	FEB	MAR	APR	MAY	JUN	JUL	AUG	SEP	OCT	NOV	DEC	ANNUAL
1969	13.82	9.11	10.58	11.17	5.49	2.04	1.59	3.43	10.93	6.85	8.40	12.87	96.28
1970	13.67	5.09	7.43	13.89	2.82	1.20	2.45	0.55	7.21	9.09	11.32	16.55	91.27
1971	23.34	12.81	14.83	6.21	3.90	5.04	1.04	3.52	5.93	13.21	14.33	15.42	119.58
1972	12.92	15.51	15.38	11.46	1.05	1.49	9.33	0.45	6.91	2.30	10.88	22.20	109.88
1973	17.29	5.90	9.72	2.94	7.43	5.47	1.14	1.03	3.63	10.16	17.17	19.89	101.77
1974	19.91	17.45	21.86	9.26	12.45	3.14	5.42	0.51	2.71	3.13	12.90	19.02	127.76
1975	14.25	11.89	9.61	5.14	5.68	3.02	0.43	10.12	0.36	27.17	24.28	19.69	131.64
1976	15.70	14.91	14.23	4.32	5.35	2.75	3.43	4.12	2.39	6.07	4.41	9.09	86.77
1977	8.26	11.22	10.82	3.88	8.87	2.10	1.92	3.15	6.28	9.21	18.10	15.03	98.84
1978	8.20	6.52	7.37	5.54	5.66	3.47	0.67	6.89	9.79	3.08	6.67	7.68	71.54
1979	3.64	19.13	8.39	5.41	4.00	2.58	2.18	0.84	8.64	8.86	7.53	27.82	99.02
1980	6.30	13.10	10.52	8.11	3.15	1.85	4.69	2.00	7.74	4.41	22.17	18.31	102.35
1981	4.49	11.03	11.66	12.65	4.80	8.50	1.43	1.24	5.18	15.32	14.04	14.72	105.06
1982	19.34	20.60	9.10	9.72	1.55	2.39	1.53	2.54	3.81	13.61	12.71	12.25	109.15
1983	13.77	20.11	12.97	3.91	3.81	4.08	11.02	2.09	5.73	5.44	29.14	8.93	121.00
1984	18.27	13.77	9.79	8.89	10.56	2.83	0.55	1.61	3.69	13.91	14.65	13.89	112.41
1985	1.22	6.90	9.33	6.19	1.86	2.43	0.36	1.09	4.75	14.69	7.79	3.63	60.24
1986	16.11	12.74	13.09	6.79	11.02	1.48	3.45	0.30	3.68	5.36	13.29	12.42	99.73
1987	14.05	8.20	13.37	6.95	8.52	1.74	1.39	0.55	1.75	1.37	11.34	11.71	80.94
1988	9.39	8.45	12.83	10.87	10.68	2.28	1.80	1.30	5.73	8.07	15.51	12.12	99.03
1989	15.65	6.22	10.03	5.57	3.31	4.52	2.36	1.99	0.13	9.80	16.57	8.82	84.97
1990	17.09	15.85	8.68	5.51	4.59	6.47	0.95	2.30	0.38	15.85	22.59	16.79	117.05
1991	12.88	16.45	6.89	7.88	4.31	2.27	1.28	15.07	0.12	2.66	18.49	10.71	99.01
1992	23.99	7.19	1.84	13.90	1.27	1.72	0.43	1.85	5.34	11.19	11.86	9.79	90.37
1993	7.88	0.87	10.96	12.25	6.83	3.67	0.98	1.25	0.23	5.46	6.62	12.85	69.85
1994	9.87	17.97	9.74	6.50	4.42	4.00	1.70	0.96	4.19	9.58	14.88	20.00	103.81
1995	14.14	10.96	9.90	5.98	1.21	3.31	2.45	6.27	1.72	13.99	20.64	13.97	104.54
1996	15.56	10.23	5.17	13.33	3.27	2.20	0.75	1.24	3.16	14.54	13.23	14.64	97.32
1997	19.48	8.28	20.32	9.99	7.07	8.83	0.77	3.73	12.82	14.70	9.49	13.45	128.88
1998	19.19	11.73	6.82	3.15	3.54	1.26	2.07	0.17	0.50	8.20	26.11	21.77	104.51
POR= 32 YRS	14.15	11.88	10.95	7.86	5.17	3.22	2.20	2.70	4.68	10.23	14.40	14.97	102.41

WBAN : 94240

AVERAGE TEMPERATURE (°F) 1998 QUILLAYUTE AIRPORT WA (UIL)

YEAR	JAN	FEB	MAR	APR	MAY	JUN	JUL	AUG	SEP	OCT	NOV	DEC	ANNUAL
1969	31.4	38.7	43.4	45.5	53.2	59.2	58.0	56.8	56.1	49.8	45.6	43.6	48.4
1970	40.3	45.6	43.7	43.8	49.7	57.0	58.3	58.4	54.8	49.4	43.8	39.0	48.7
1971	39.5	40.7	39.3	45.5	50.5	52.5	58.4	61.3	54.5	48.8	44.3	36.4	47.6
1972	35.7	40.1	43.5	42.7	53.7	55.8	60.5	61.3	52.5	48.4	44.5	37.5	48.0
1973	39.0	42.0	43.0	46.7	51.7	54.9	58.0	55.4	56.4	48.7	40.5	42.2	48.2
1974	38.1	40.4	42.0	46.5	48.2	55.0	57.9	59.4	60.4	50.6	45.0	43.6	48.9
1975	39.0	40.3	41.0	43.3	51.4	53.5	59.2	57.4	57.7	49.1	43.8	40.6	48.0
1976	41.9	40.0	39.9	46.7	49.9	52.9	58.4	58.1	57.9	51.0	45.8	43.8	48.9
1977	39.4	44.9	42.2	47.0	48.7	55.4	57.1	60.7	55.1	49.3	42.1	40.1	48.5
1978	42.9	43.9	45.4	47.5	50.7	58.7	59.9	60.4	55.9	51.7	40.4	35.9	49.4
1979	35.3	39.7	45.5	47.2	52.4	54.9	60.0	60.4	60.0	52.5	43.9	44.5	49.7
1980	35.7	44.4	43.4	48.1	50.5	54.2	59.7	56.7	56.6	52.3	46.3	43.9	49.3
1981	45.3	43.7	46.6	46.8	51.1	54.2	58.1	61.3	56.8	49.3	45.8	41.0	50.0
1982	37.8	40.6	41.5	43.1	49.8	56.6	57.1	59.5	57.7	50.3	41.2	39.4	47.9
1983	44.4	44.5	46.2	47.7	53.5	55.8	59.6	60.2	54.4	47.8	45.8	35.2	49.6
1984	42.0	44.0	46.4	45.7	49.4	53.2	58.6	58.9	55.1	47.9	43.5	36.7	48.5
1985	38.9	39.4	40.4	45.9	51.7	54.9	60.3	58.6	54.9	48.7	35.0	38.3	47.3
1986	44.6	40.3	47.3	44.8	51.3	57.4	56.8	60.7	55.1	52.4	44.6	42.8	49.8
1987	41.8	44.4	46.0	49.1	52.7	55.3	58.4	59.5	57.7	52.6	47.8	39.2	50.4
1988	39.7	45.0	44.3	47.7	51.4	54.4	59.5	59.9	55.4	53.0	44.8	41.9	49.8
1989	39.6	35.0	41.9	50.4	51.6	57.4	58.6	59.4	59.3	51.1	45.9	43.6	49.5
1990	42.5	39.8	45.1	48.9	51.4	55.9	61.4	61.5	59.9	48.3	45.3	36.3	49.7
1991	39.5	46.4	41.8	46.0	50.3	53.9	59.2	58.6	60.1	49.3	45.6	43.6	49.5
1992	44.1	46.5	48.5	49.0	54.3	58.4	60.7	60.7	54.8	51.1	44.8	38.1	50.9
1993	36.8	40.9	45.4	48.1	55.5	56.8	57.8	60.9	55.6	52.7	41.6	41.6	49.5
1994	44.9	40.0	45.5	48.9	52.7	54.9	59.3	60.8	58.9	48.9	41.2	40.9	49.7
1995	44.1	45.1	45.0	47.3	53.8	57.4	61.1	58.0	60.1	50.6	47.4	43.1	51.1
1996	39.8	42.7	45.0	48.8	50.0	54.6	60.4	60.9	54.5	49.5	43.6	37.8	49.0
1997	41.1	41.5	42.9	46.1	53.8	55.3	58.8	60.5	59.4	50.8	47.7	42.8	50.1
1998		44.7	45.2	46.5	52.4	55.1	60.4	59.8	56.0	51.4	45.9	39.6	
POR= 32 YRS	38.9	42.2	43.8	46.5	51.5	55.6	59.0	59.5	56.8	50.2	44.3	40.4	49.1

HEATING DEGREE DAYS (base 65°F) 1998 QUILLAYUTE AIRPORT WA (UIL)

YEAR	JUL	AUG	SEP	OCT	NOV	DEC	JAN	FEB	MAR	APR	MAY	JUN	TOTAL
1969-70	208	248	259	462	574	656	758	536	655	628	467	239	5690
1970-71	208	197	298	475	628	799	783	673	787	578	445	372	6243
1971-72	201	126	305	493	614	879	903	716	660	663	354	269	6183
1972-73	160	131	379	508	608	845	800	638	675	543	409	299	5995
1973-74	217	291	250	499	728	701	828	681	705	548	513	295	6256
1974-75	223	168	159	438	595	656	797	684	738	643	417	338	5856
1975-76	178	230	214	486	628	750	711	718	770	542	460	357	6044
1976-77	196	207	207	427	569	647	784	554	703	530	499	283	5606
1977-78	240	142	290	479	679	767	680	585	601	516	434	187	5600
1978-79	170	154	266	404	732	892	913	703	600	526	383	294	6037
1979-80	157	137	147	382	625	628	905	591	661	500	443	319	5495
1980-81	167	250	244	386	554	647	603	591	565	542	422	314	5285
1981-82	210	148	248	480	570	739	838	679	722	648	465	257	6004
1982-83	237	170	215	450	706	786	635	565	577	514	353	266	5474
1983-84	163	146	313	526	570	915	707	601	569	571	478	347	5906
1984-85	199	184	291	525	637	871	802	712	753	564	408	301	6247
1985-86	145	190	296	498	894	820	622	685	542	599	422	223	5936
1986-87	248	134	290	384	608	682	712	572	582	471	380	285	5348
1987-88	197	177	217	381	510	791	777	574	632	512	417	311	5496
1988-89	183	155	293	366	599	710	783	830	709	434	407	245	5714
1989-90	194	168	173	426	566	659	689	698	610	477	415	273	5348
1990-91	118	114	156	510	584	883	782	515	710	563	447	326	5708
1991-92	185	189	159	481	575	657	644	531	505	476	325	199	4926
1992-93	132	152	299	424	602	825	868	667	598	500	288	239	5594
1993-94	215	145	275	379	695	719	617	695	601	478	373	294	5486
1994-95	176	125	177	494	707	739	639	548	614	524	339	247	5329
1995-96	135	210	142	440	524	670	772	644	612	481	462	309	5401
1996-97	159	128	309	474	636	837	736	652	679	561	343	284	5798
1997-98	186	134	161	432	511	679	679	563	608	549	385	288	5798
1998-	148	169	266	413	567	777							

WBAN : 94240

COOLING DEGREE DAYS (base 65°F) 1998 QUILLAYUTE AIRPORT WA (UIL)

YEAR	JAN	FEB	MAR	APR	MAY	JUN	JUL	AUG	SEP	OCT	NOV	DEC	ANNUAL
1969	0	0	0	0	2	18	0	1	0	0	0	0	21
1970	0	0	0	0	0	7	8	1	0	0	0	0	16
1971	0	0	0	0	0	3	5	18	0	0	0	0	26
1972	0	0	0	0	11	0	31	21	11	0	0	0	74
1973	0	0	0	0	2	2	7	0	1	0	0	0	12
1974	0	0	0	0	0	0	10	3	27	0	0	0	40
1975	0	0	0	0	0	0	5	0	1	0	0	0	6
1976	0	0	0	0	0	0	0	0	0	0	0	0	0
1977	0	0	0	0	0	1	1	15	0	0	0	0	17
1978	0	0	0	0	0	7	18	17	0	0	0	0	42
1979	0	0	0	0	0	0	11	1	3	0	0	0	15
1980	0	0	0	0	0	0	11	0	0	0	0	0	11
1981	0	0	0	0	0	0	1	38	7	0	0	0	46
1982	0	0	0	0	0	10	0	4	2	0	0	0	16
1983	0	0	0	0	4	0	0	6	0	0	0	0	10
1984	0	0	0	0	0	0	5	1	0	0	0	0	6
1985	0	0	0	0	1	6	6	1	0	0	0	0	14
1986	0	0	0	0	4	1	0	7	0	0	0	0	12
1987	0	0	0	0	2	2	0	12	2	0	0	0	18
1988	0	0	0	0	0	0	19	4	13	0	0	0	36
1989	0	0	0	0	0	24	0	0	9	0	0	0	33
1990	0	0	0	0	0	7	16	10	11	0	0	0	44
1991	0	0	0	0	0	0	11	0	20	0	0	0	31
1992	0	0	0	0	2	9	6	25	0	0	0	0	42
1993	0	0	0	0	2	0	1	25	0	0	0	0	28
1994	0	0	0	0	0	0	6	1	3	0	0	0	10
1995	0	0	0	0	0	27	19	0	0	0	0	0	46
1996	0	0	0	0	0	3	20	8	0	0	0	0	31
1997	0	0	0	0	0	0	0	4	0	0	0	0	4
1998	0	0	0	0	0	0	11	13	0	0	0	0	

SNOWFALL (inches) 1998 QUILLAYUTE AIRPORT WA (UIL)

YEAR	JUL	AUG	SEP	OCT	NOV	DEC	JAN	FEB	MAR	APR	MAY	JUN	TOTAL
1969-70	0.0	0.0	0.0	0.0	0.1	0.0	T	0.0	0.4	1.1	0.0	0.0	1.6
1970-71	0.0	0.0	0.0	0.0	1.7	7.0	26.4	12.8	10.2	0.6	T	0.0	58.7
1971-72	0.0	0.0	0.0	T	0.0	8.3	13.7	1.0	0.2	2.5	0.0	0.0	25.7
1972-73	0.0	0.0	T	T	0.0	11.6	1.2	0.0	0.4	T	T	T	13.2
1973-74	0.0	0.0	0.0	0.0	4.4	T	2.4	6.7	8.6	0.0	T	0.0	22.1
1974-75	0.0	0.0	0.0	0.0	T	0.8	7.7	3.0	T	2.8	0.0	0.0	14.3
1975-76	0.0	0.0	0.0	0.0	3.8	2.3	0.3	13.3	8.7	0.1	0.0	0.0	28.5
1976-77	0.0	0.0	0.0	0.0	0.0	0.0	0.0	T	T	T	T	0.0	T
1977-78	0.0	0.0	0.0	0.0	T	4.5	1.4	T	T	T	0.0	0.0	5.9
1978-79	0.0	0.0	0.0	0.0	T	1.6	T	0.5	T	0.0	0.0	0.0	2.1
1979-80	0.0	0.0	0.0	0.0	0.0	0.0	11.0	T	2.1	T	T	0.0	13.1
1980-81	0.0	0.0	0.0	0.0	0.0	7.5	0.0	T	T	0.6	0.0	0.0	8.1
1981-82	0.0	0.0	0.0	0.0	T	8.3	13.1	7.2	0.6	0.8	T	0.0	30.0
1982-83	0.0	0.0	0.0	T	T	T	T	T	T	T	T	0.0	T
1983-84	0.0	0.0	0.0	0.0	T	0.9	0.0	T	T	T	T	0.0	0.9
1984-85	0.0	0.0	0.0	T	T	6.7	0.0	4.7	0.4	T	T	0.0	11.8
1985-86	0.0	0.0	0.0	T	15.6	T	T	3.4	T	T	T	0.0	19.0
1986-87	0.0	0.0	0.0	0.0	T	T	0.1	0.9	0.3	0.1	0.0	0.0	1.4
1987-88	0.0	0.0	0.0	0.0	T	0.9	T	T	T	T	T	T	0.9
1988-89	0.0	0.0	0.0	0.0	1.1	T	3.2	0.3	7.5	T	0.0	0.0	12.1
1989-90	0.0	0.0	0.0	T	T	T	5.2	16.1	0.1	T	T	0.0	21.4
1990-91	0.0	0.0	0.0	T	1.5	5.1	T	0.0	0.7	T	T	0.0	7.3
1991-92	0.0	0.0	0.0	T	T	T	0.0	T	0.0	0.2	T	0.0	0.2
1992-93	0.0	0.0	0.0	0.0	0.0	6.8	0.3	2.1	T	T	0.0	0.0	9.2
1993-94	0.0	0.0	0.0	0.0	T	T	T	1.1	2.1	0.0	T	0.0	3.2
1994-95	0.0	0.0	0.0	T	T	2.4	0.0	5.4	T	T	0.0	0.0	7.8
1995-96	0.0	0.0	0.0	T	T	T	10.3	0.6	0.0	0.0	0.0	0.0	10.9
1996-97	0.0	0.0	0.0	T	4.2								
1997-98													
1998-													
POR= 29 YRS	0.0	0.0	T	T	0.9	2.7	4.6	2.7	1.5	0.3	T	T	12.7

WBAN : 94240

REFERENCE NOTES:

<p>PAGE 1: THE TEMPERATURE GRAPH SHOWS NORMAL MAXIMUM AND NORMAL MINIMUM DAILY TEMPERATURES (SOLID CURVES) AND THE ACTUAL DAILY HIGH AND LOW TEMPERATURES (VERTICAL BARS).</p> <p>PAGE 2 AND 3: H/C INDICATES HEATING AND COOLING DEGREE DAYS. RH INDICATES RELATIVE HUMIDITY W/O INDICATES WEATHER AND OBSTRUCTIONS S INDICATES SUNSHINE. PR INDICATES PRESSURE. CLOUDINESS ON PAGE 3 IS THE SUM OF THE CEILOMETER AND SATELLITE DATA NOT TO EXCEED EIGHT EIGHTHS(OKTAS).</p> <p>GENERAL: T INDICATES TRACE PRECIPITATION, AN AMOUNT GREATER THAN ZERO BUT LESS THAN THE LOWEST REPORTABLE VALUE. + INDICATES THE VALUE ALSO OCCURS ON EARLIER DATES. BLANK ENTRIES DENOTE MISSING OR UNREPORTED DATA. NORMALS ARE 30-YEAR AVERAGES (1961 - 1990). ASOS INDICATES AUTOMATED SURFACE OBSERVING SYSTEM. PM INDICATES THE LAST DAY OF THE PREVIOUS MONTH. POR (PERIOD OF RECORD) BEGINS WITH THE JANUARY DATA MONTH AND IS THE NUMBER OF YEARS USED TO COMPUTE THE MEAN. INDIVIDUAL MONTHS WITHIN THE POR MAY BE MISSING. WHEN THE POR FOR A NORMAL IS LESS THAN 30 YEARS, THE NORMAL IS PROVISIONAL AND IS BASED ON THE NUMBER OF YEARS INDICATED. 0.* OR * INDICATES THE VALUE OR MEAN-DAYS-WITH IS BETWEEN 0.00 AND 0.05. CLOUDINESS FOR ASOS STATIONS DIFFERS FROM THE NON-ASOS OBSERVATION TAKEN BY A HUMAN OBSERVER. ASOS STATION CLOUDINESS IS BASED ON TIME-AVERAGED CEILOMETER DATA FOR CLOUDS AT OR BELOW 12,000 FEET AND ON SATELLITE DATA FOR CLOUDS ABOVE 12,000 FEET. THE NUMBER OF DAYS WITH CLEAR, PARTLY CLOUDY, AND CLOUDY CONDITIONS FOR ASOS STATIONS IS THE SUM OF THE CEILOMETER AND SATELLITE DATA FOR THE SUNRISE TO SUNSET PERIOD.</p>	<p>GENERAL CONTINUED: CLEAR INDICATES 0 - 2 OKTAS, PARTLY CLOUDY INDICATES 3 - 6 OKTAS, AND CLOUDY INDICATES 7 OR 8 OKTAS. WHEN AT LEAST ONE OF THE ELEMENTS (CEILOMETER OR SATELLITE) IS MISSING, THE DAILY CLOUDINESS IS NOT COMPUTED. WIND DIRECTION IS RECORDED IN TENS OF DEGREES (2 DIGITS) CLOCKWISE FROM TRUE NORTH. "00" INDICATES CALM. "36" INDICATES TRUE NORTH. RESULTANT WIND IS THE VECTOR AVERAGE OF THE SPEED AND DIRECTION. AVERAGE TEMPERATURE IS THE SUM OF THE MEAN DAILY MAXIMUM AND MINIMUM TEMPERATURE DIVIDED BY 2. SNOWFALL DATA COMPRISE ALL FORMS OF FROZEN PRECIPITATION, INCLUDING HAIL. A HEATING (COOLING) DEGREE DAY IS THE DIFFERENCE BETWEEN THE AVERAGE DAILY TEMPERATURE AND 65° F. DRY BULB IS THE TEMPERATURE OF THE AMBIENT AIR. DEW POINT IS THE TEMPERATURE TO WHICH THE AIR MUST BE COOLED TO ACHIEVE 100 PERCENT RELATIVE HUMIDITY. WET BULB IS THE TEMPERATURE THE AIR WOULD HAVE IF THE MOISTURE CONTENT WAS INCREASED TO 100 PERCENT RELATIVE HUMIDITY.</p> <p>ON JULY 1, 1996, THE NATIONAL WEATHER SERVICE BEGAN USING THE "METAR" OBSERVATION CODE THAT WAS ALREADY EMPLOYED BY MOST OTHER NATIONS OF THE WORLD. THE MOST NOTICEABLE DIFFERENCE IN THIS ANNUAL PUBLICATION WILL BE THE CHANGE IN UNITS FROM TENTHS TO EIGHTHS(OKTAS) FOR REPORTING THE AMOUNT OF SKY COVER.</p>
---	---

1998  
QUILLAYUTE AIRPORT  
WASHINGTON (UIL)

Quillayute Airport, located on the coastal plain between the Pacific Ocean and the Olympic Mountains, is 3 miles inland from the coast, and 10 miles west of the city of Forks. The terrain is slightly rolling with a gradual increase in elevation from sea level to 180 feet at the station, to 350 feet in the vicinity of Forks. Foothills of the Olympic Mountains begin near the eastern edge of Forks, and within 10 to 15 miles, the higher ridges reach elevations of 3,000 to 6,000 feet.

Timber is the primary economic product of this northwestern section of the Olympic Peninsula. Only small areas of the Quillayute plains and a few other localities are devoted to cattle raising and agriculture. Logging operations continue throughout the year in the lower elevations with little delay due to normal rain or snow. In the foothills and mountains, heavy snowfall, excessive precipitation, and high winds during the winter season result in shutdowns, but seldom for more than one or two days. Forests are closed to logging and recreation for short periods of time almost every summer when the relative humidity is low and the fire danger is high.

Maritime air from over the Pacific has an influence on the climate throughout the year. In the late fall and winter, the low pressure center in the Gulf of Alaska intensifies and is of major importance in controlling weather systems entering the Pacific Northwest. At this season of the year, storm systems crossing the Pacific follow a more southerly path striking the coast at frequent intervals. The prevailing flow of air is from the southwest and west. Air reaching this area is moist and near the temperature of the ocean water along the coast which ranges from 45 degrees in February to 57 degrees in August. The wet season begins in September or October. From October through January, rain may be expected on about 26 days per month, from February through March, on 20 days, from April to June, on 15 days, and from July to September, on 10 days. As the weather systems move inland, rainfall is usually of moderate intensity and continuous, rather than heavy downpours for brief periods. Gale force winds are not unusual. Most of the winter precipitation over the coastal plains falls as rain, however, snow can be expected each year. Snow seldom reaches depths in excess of 10 inches or remains on the ground longer than two weeks.

Annual precipitation increases from approximately 90 inches near the coast, to amounts in excess of 120 inches over the coastal plains, to 200 inches or more on the wettest slopes of the Olympic Mountains.

During the rainy season, temperatures show little diurnal or day-to-day change. Maximums are in the 40s and minimums in the mid-30s. A few brief outbreaks of cold air from the interior of Canada can be expected each winter. Clear, dry, cold weather generally prevails during periods of easterly winds.

In the late spring and summer, a clockwise circulation of air around the large high pressure center over the north Pacific brings a prevailing northwesterly and westerly flow of cool, comparatively dry, stable air into the northwest Olympic Peninsula. The dry season begins in May with the driest period between mid-July and mid-August. The total rainfall for July is less than .5 inch in one summer out of ten. It also exceeds 5 inches in one summer out of ten. During the warmest months, afternoon temperatures are in the upper 60s and lower 70s, reaching the upper 70s and the lower 80s on a few days. Occasionally, hot, dry air from the east of the Cascade Mountains reaches this area and temperatures are in the mid- or upper-90s for one to three days.

In summer and early fall, fog or low clouds form over the ocean and frequently move inland at night, but generally disappear by midday. In winter, under the influence of a surface high pressure system, centered off the coast, fog, low clouds, and drizzle are a daily occurrence as long as this type of pressure continues.

# STATION LOCATION

QUILLAYUTE AIRPORT  
FORKS, WASHINGTON

LOCATION	OCCUPIED FROM	OCCUPIED TO	AIRLINE DISTANCES AND DIRECTIONS FROM PREVIOUS LOCATION	NORTH	WEST	ELEVATION ABOVE										A U T O M A T I C A L I N S T R U M E N T S *	* Type M = AMOS T = AUTOB S = ASOS W = AWOS	REMARKS	
						SEA LEVEL	GROUND												
							WIND	EMERGENCY	EMERGENCY	EMERGENCY	EMERGENCY	EMERGENCY	EMERGENCY	EMERGENCY	EMERGENCY				EMERGENCY
Quillayute Airport Star Route #2 Forks, Washington	8/01/66	Present	NA	47°57'	124°33'	179	22	5	5	%12	5	a4	5	NA	NA	a - Added 9/10/71, % - Commissioned 9/21/66. S ASOS Commissioned 12/01/96			

SUBSCRIPTION: Price and ordering information available through: National Climatic Data Center, Federal Building, Asheville, North Carolina 28801.  
INQUIRIES/COMMENTS CALL: (828) 271-4800

National Climatic Data Center  
151 Patton Avenue, Rm 120  
Asheville NC 28801-5001

OFFICIAL BUSINESS  
PENALTY FOR PRIVATE USE \$300  
FORWARD AND ADDRESS CORRECTION

FIRST CLASS  
POSTAGE & FEES PAID  
United States Department of Commerce  
NOAA Permit No. G - 19