

1997

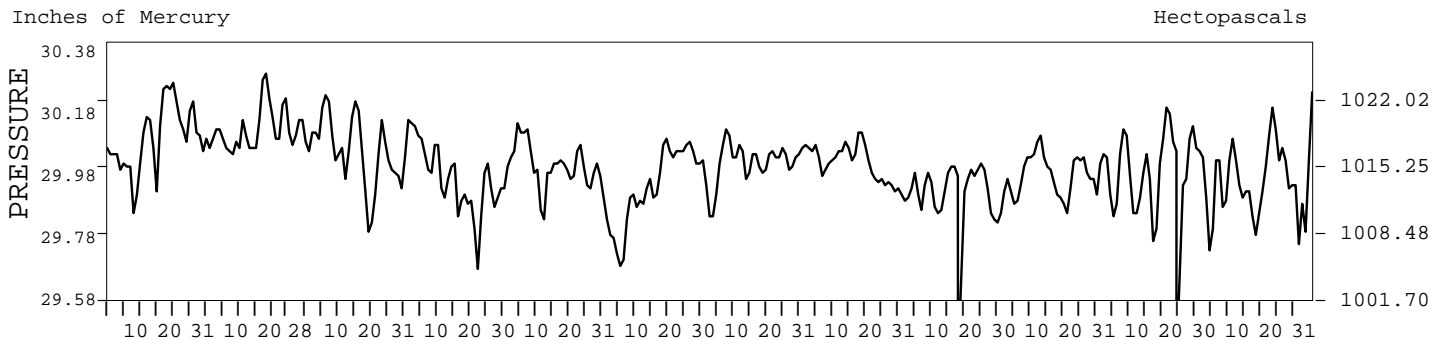
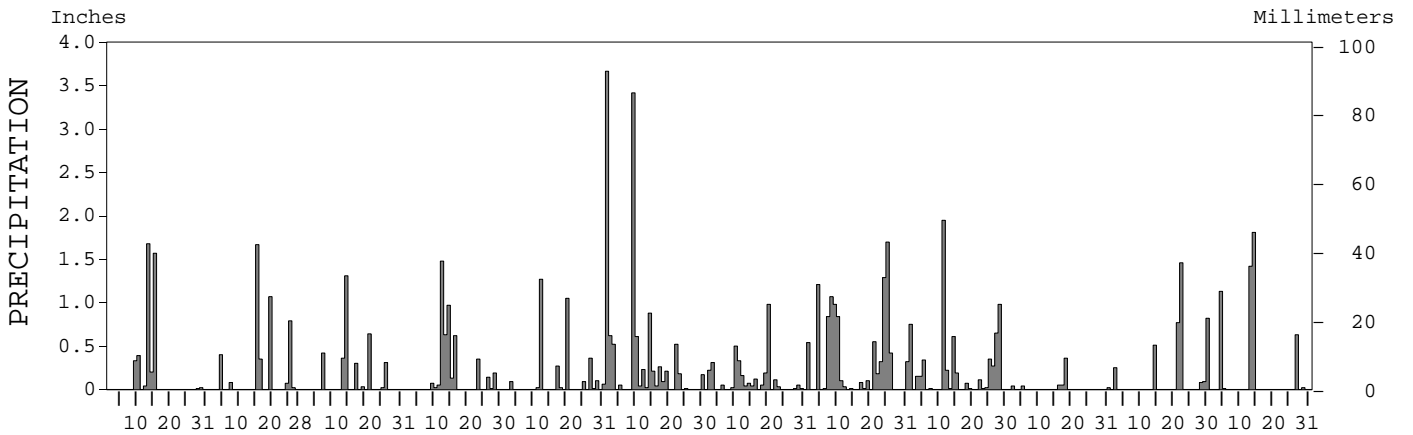
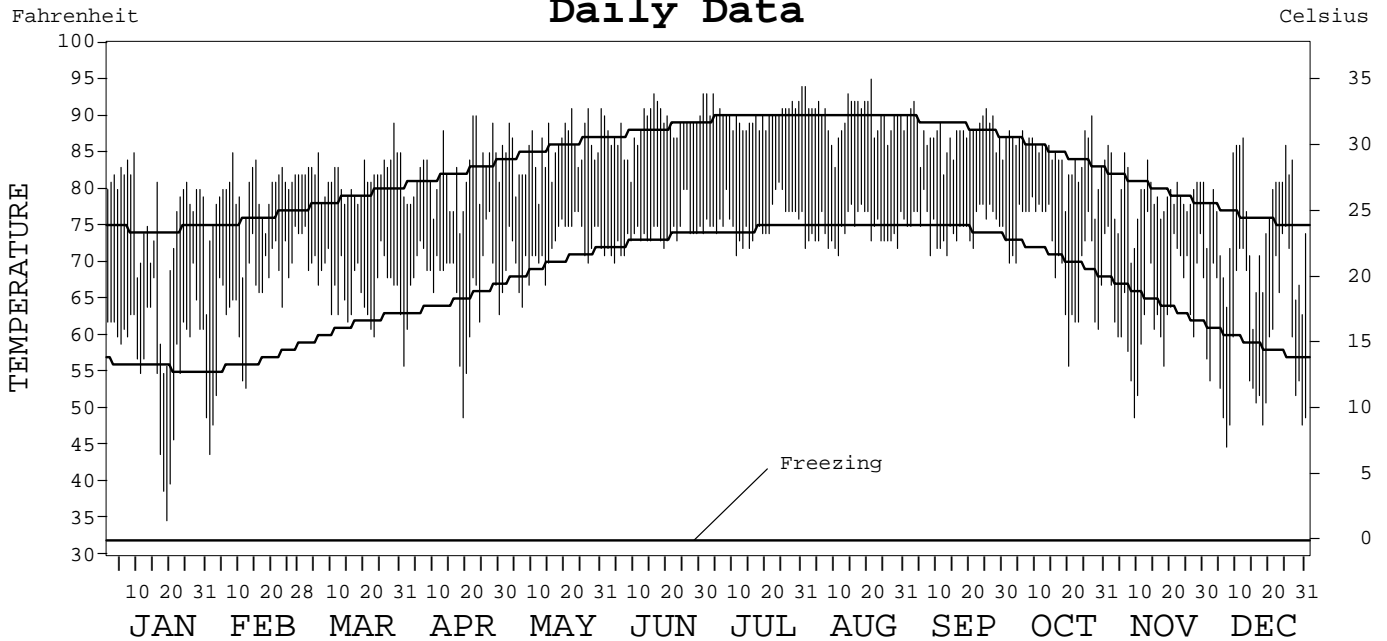
LOCAL CLIMATOLOGICAL DATA ANNUAL SUMMARY WITH COMPARATIVE DATA



ISSN 0198-1439

WEST PALM BEACH, FLORIDA (PBI)

Daily Data



I CERTIFY THAT THIS IS AN OFFICIAL PUBLICATION OF THE NATIONAL OCEANIC AND ATMOSPHERIC ADMINISTRATION, AND IS COMPILED FROM RECORDS ON FILE AT THE NATIONAL CLIMATIC DATA CENTER.

NATIONAL
OCEANIC AND
ATMOSPHERIC ADMINISTRATION

NATIONAL
ENVIRONMENTAL AND INFORMATION SERVICE
SATellite, DATA, AND INFORMATION SERVICE

NATIONAL
CLIMATIC DATA CENTER
ASHEVILLE, NORTH CAROLINA

Fernando S. ...
ACTING DIRECTOR
NATIONAL CLIMATIC DATA CENTER

METEOROLOGICAL DATA FOR 1997

WEST PALM BEACH, FL (PBI)

LATITUDE: 26° 41' 05" N LONGITUDE: 80° 05' 58" W ELEVATION (FT): GRND: 15 BARO: 24 TIME ZONE: EASTERN (UTC+ 5) WBAN: 12844

ELEMENT		JAN	FEB	MAR	APR	MAY	JUN	JUL	AUG	SEP	OCT	NOV	DEC	YEAR	
TEMPERATURE °F	MEAN DAILY MAXIMUM	75.3	79.3	81.8	81.8	85.5	88.3	90.3	89.9	87.6	84.7	79.2	75.2	83.2	
	HIGHEST DAILY MAXIMUM	85	85	89	90	91	93	94	95	92	90	86	87	95	
	DATE OF OCCURRENCE	9	8	29	23+	31+	16	31	21	03	27	01	12	AUG 21	
	MEAN DAILY MINIMUM	57.4	65.1	67.4	66.6	71.8	73.7	75.6	74.4	75.1	71.1	64.3	59.3	68.5	
	LOWEST DAILY MINIMUM	35	44	60	49	64	70	71	71	71	56	49	45	35	
	DATE OF OCCURRENCE	19	1	23	19	7	04	11	11	13+	20	9	07	JAN 19	
	AVERAGE DRY BULB	66.4	72.2	74.6	74.2	78.7	81.0	83.0	82.2	81.4	77.9	71.8	67.3	75.9	
	MEAN WET BULB	61.1	66.9	68.5	67.1		75.2	77.1	76.1		71.0		62.8		
	MEAN DEW POINT	56.7	63.9	65.2	62.5		72.9	75.0	74.1		67.5		59.5		
	NUMBER OF DAYS WITH:														
	MAXIMUM ≥ 90°	0	0	0	2	3	9	23	20	7	1	0	0	0	65
	MAXIMUM ≤ 32°	0	0	0	0	0	0	0	0	0	0	0	0	0	0
	MINIMUM ≤ 32°	0	0	0	0	0	0	0	0	0	0	0	0	0	0
	MINIMUM ≤ 0°	0	0	0	0	0	0	0	0	0	0	0	0	0	0
H/C	HEATING DEGREE DAYS	79	13	0	2	0	0	0	0	0	0	8	75	177	
	COOLING DEGREE DAYS	128	223	305	285	431	490	564	541	500	408	218	154	4247	
RH	MEAN (PERCENT)	73	77	74	70	75	79	80	80	80	72	77	79	76	
	HOUR 01 LST	81	85	81	78	82	89	88	88	88	80	84	88	84	
	HOUR 07 LST	84	85	86	79	83	86	88	91	89	83	86	88	86	
	HOUR 13 LST	57	64	61	59	63	67	67	67	69	59	64	64	63	
	HOUR 19 LST	71	76	72	68	76	77	79	78	79	72	76	79	75	
S	PERCENT POSSIBLE SUNSHINE														
W/O	NUMBER OF DAYS WITH:														
	HEAVY FOG (VISBY ≤ 1/4 MI)	1	0	1	0	0	0	0	2	3	0	1	1	9	
	THUNDERSTORMS	1	1	2	4	9	18	23	21	13	0	4	1	97	
CLOUDINESS	SUNRISE-SUNSET: (OKTAS)														
	CEILOMETER (≤ 12,000 FT.)														
	SATELLITE (> 12,000 FT.)														
	MIDNIGHT-MIDNIGHT: (OKTAS)														
	CEILOMETER (≤ 12,000 FT.)														
	SATELLITE (> 12,000 FT.)														
NUMBER OF DAYS WITH:															
CLEAR															
PARTLY CLOUDY															
CLOUDY															
PR	MEAN STATION PRESS. (IN.)	30.10	30.13	30.06	29.97	30.01	29.94	30.02	30.01		29.99		29.97		
	MEAN SEA-LEVEL PRESS. (IN.)	30.12	30.15	30.08	29.99	30.03	29.96	30.04	30.03		30.01		29.99		
WINDS	RESULTANT SPEED (MPH)	1.5	3.6	1.4	1.5	3.3	2.3	2.0	1.4		4.2		2.7		
	RES. DIR. (TENS OF DEGS.)	06	10	15	16	11	09	12	11		28		25		
	MEAN SPEED (MPH)	8.3	10.3	9.9	10.9	8.6	7.1	6.0	5.4	7.4	9.7	8.5	8.5	8.4	
	PREVAIL. DIR. (TENS OF DEGS.)	33	14	12	10	12	11	13	12	06	08	34	33	09	
	MAXIMUM 2-MINUTE WIND:														
	SPEED (MPH)	32	25	26	28	28	30	38	33	25	24	32	30	38	
	DIR. (TENS OF DEGS.)	32	05	11	31	33	21	33	10	20	07	30	26	33	
	DATE OF OCCURRENCE	25+	17+	25+	23	27	12	11	24	27+	12+	02	29	JUL 11	
	MAXIMUM 5-SECOND WIND:														
	SPEED (MPH)	39	31	31	38	32	34	45	39	31	29	39	36	45	
DIR. (TENS OF DEGS.)	31	20	29	31	24	19	33	09	20	07	30	27	33		
DATE OF OCCURRENCE	09	15	21+	23	13	12+	11	24+	27	10+	02	29	JUL 11		
PRECIPITATION	WATER EQUIVALENT:														
	TOTAL (IN.)	4.24	4.45	3.39	4.66	3.34	11.75	3.29	10.60	6.85	0.56	3.98	5.02	62.13	
	GREATEST 24-HOUR (IN.)	1.85	1.82	1.31	1.48	1.27	3.67	0.98	1.70	1.95	0.36	1.46	3.15	3.67	
	DATE OF OCCURRENCE	13-14	15-16	14	12-13	12	01	20	25	11	18	22	13-14	JUN 01	
	NUMBER OF DAYS WITH:														
	PRECIPITATION ≥ 0.01	8	8	8	12	11	19	19	20	19	6	7	6	143	
PRECIPITATION ≥ 0.10	5	5	6	8	5	13	9	15	13	1	5	4	89		
PRECIPITATION ≥ 1.00	2	2	1	1	2	2	0	4	1	0	1	3	19		
SNOWFALL	SNOW, ICE PELLETS, HAIL:														
	TOTAL (IN.)				0.0	0.0	0.0	0.0	0.0	0.0	0.0	0.0	0.0	0.0	
	GREATEST 24-HOUR (IN.)				0.0	0.0	0.0	0.0	0.0	0.0	0.0	0.0	0.0	0.0	
	DATE OF OCCURRENCE														
	MAXIMUM SNOW DEPTH (IN.)				0	0	0	0	0	0	0	0	0	0	
	DATE OF OCCURRENCE														
NUMBER OF DAYS WITH:															
SNOWFALL ≥ 1.0				0	0	0	0	0	0	0	0	0	0		

NORMALS, MEANS, AND EXTREMES

WEST PALM BEACH, FL (PBI)

LATITUDE: 26° 41' 05" N LONGITUDE: 80° 05' 58" W ELEVATION (FT): GRND: 15 BARO: 24 TIME ZONE: EASTERN (UTC+ 5) WBAN: 12844

		POR	JAN	FEB	MAR	APR	MAY	JUN	JUL	AUG	SEP	OCT	NOV	DEC	YEAR
TEMPERATURE °F	NORMAL DAILY MAXIMUM	30	74.5	75.9	78.8	82.0	85.6	88.1	89.9	90.0	88.6	84.9	80.0	76.0	82.9
	MEAN DAILY MAXIMUM	39	74.6	75.9	78.9	82.2	85.5	88.3	90.1	90.2	88.5	85.0	80.1	76.1	82.9
	HIGHEST DAILY MAXIMUM	60	89	90	94	99	96	98	101	98	97	95	91	90	101
	YEAR OF OCCURRENCE		1942	1949	1977	1971	1971	1980	1942	1963	1937	1989	1992	1941	JUL 1942
	MEAN OF EXTREME MAXS.	49	83.7	85.7	88.2	90.5	91.8	93.7	94.3	94.2	92.9	90.6	86.5	84.4	89.7
	NORMAL DAILY MINIMUM	30	55.7	56.5	61.2	64.7	69.7	73.1	74.5	75.0	74.6	70.7	64.5	58.7	66.6
	MEAN DAILY MINIMUM	39	56.7	57.4	61.4	65.3	70.0	73.3	74.7	75.1	74.4	70.7	65.0	58.9	66.9
	LOWEST DAILY MINIMUM	60	27	32	30	43	51	61	66	65	66	46	36	28	27
	YEAR OF OCCURRENCE		1977	1989	1980	1987	1992	1984	1937	1957	1938	1968	1950	1989	JAN 1977
	MEAN OF EXTREME MINS.	49	38.8	42.5	45.7	53.3	61.0	68.1	70.5	70.6	70.0	59.4	49.2	41.4	55.9
	NORMAL DRY BULB	30	65.1	66.2	70.0	73.4	77.6	80.6	82.2	82.5	81.6	77.8	72.3	67.4	74.7
	MEAN DRY BULB	49	66.0	67.1	70.3	73.8	77.9	80.9	82.5	82.7	81.6	77.8	72.4	67.7	75.1
	MEAN WET BULB	46	60.1	61.0	63.5	66.2	70.6	74.2	75.6	75.8	75.2	71.0	66.0	61.8	68.4
	MEAN DEW POINT	46	56.2	57.0	59.3	62.0	67.3	71.8	73.2	73.4	72.9	68.1	62.5	58.0	65.1
	NORMAL NO. DAYS WITH:														
MAXIMUM ≥ 90°	30	0.0	0.0	0.5	1.9	3.8	9.8	18.2	20.1	11.2	2.2	0.1	0.0	67.8	
MAXIMUM ≤ 32°	30	0.0	0.0	0.0	0.0	0.0	0.0	0.0	0.0	0.0	0.0	0.0	0.0	0.0	
MINIMUM ≤ 32°	30	0.4	0.1	0.1	0.0	0.0	0.0	0.0	0.0	0.0	0.0	0.0	0.2	0.8	
MINIMUM ≤ 0°	30	0.0	0.0	0.0	0.0	0.0	0.0	0.0	0.0	0.0	0.0	0.0	0.0	0.0	
H/C	NORMAL HEATING DEG. DAYS	30	122	85	27	0	0	0	0	0	0	0	15	74	323
	NORMAL COOLING DEG. DAYS	30	125	119	182	252	391	468	533	543	498	397	234	149	3891
RH	NORMAL (PERCENT)	30	73	71	70	68	72	77	76	76	78	74	73	73	73
	HOUR 01 LST	30	81	80	78	76	79	84	85	84	84	80	80	80	81
	HOUR 07 LST	30	83	83	81	79	80	84	85	85	87	83	83	82	83
	HOUR 13 LST	30	59	56	56	54	59	65	64	64	66	62	61	59	60
	HOUR 19 LST	30	72	70	68	65	71	76	75	75	78	74	73	73	72
S	PERCENT POSSIBLE SUNSHINE														
W/O	MEAN NO. DAYS WITH:														
	HEAVY FOG (VISBY ≤ 1/4 MI)	54	1.7	1.1	0.9	0.9	0.3	0.3	0.0	0.1	0.3	0.4	0.6	1.1	7.7
	THUNDERSTORMS	54	0.9	1.2	2.4	3.5	7.5	13.0	16.0	16.2	11.3	4.5	1.5	0.9	78.9
CLOUDINESS	MEAN:														
	SUNRISE-SUNSET (OKTAS)	1					5.6	4.8						5.6	
	MIDNIGHT-MIDNIGHT (OKTAS)	1						4.8							
	MEAN NO. DAYS WITH:														
CLEAR	1	1.0	8.5	7.0		5.0	6.0						2.0		
PARTLY CLOUDY	2	6.5	3.0	6.0		6.0	8.0						3.0		
CLOUDY	2	5.5	2.5	4.0		8.0	9.0								
PR	MEAN STATION PRESSURE (IN)	24	30.09	30.07	30.04	30.01	29.98	30.00	30.05	30.02	29.97	29.98	30.04	30.08	30.03
	MEAN SEA-LEVEL PRES. (IN)	46	30.12	30.09	30.06	30.04	30.00	30.01	30.06	30.02	29.97	29.98	30.05	30.11	30.04
WINDS	MEAN SPEED (MPH)	35	10.3	10.7	11.2	11.0	9.9	8.4	7.9	7.9	8.8	10.3	10.6	10.2	9.8
	PREVAIL. DIR (TENS OF DEGS)	19	32	32	14	13	12	12	12	12	09	07	08	32	09
	MAXIMUM 2-MINUTE:														
	SPEED (MPH)	4	37	34	36	31	30	45	38	33	44	33	39	38	45
	DIR. (TENS OF DEGS)		19	06	25	25	19	01	33	11	13	20	10	36	01
	YEAR OF OCCURRENCE		1994	1994	1994	1996	1994	1994	1997	1994	1994	1996	1994	1994	JUN 1994
MAXIMUM 5-SECOND:															
SPEED (MPH)	4	46	40	43	38	39	53	45	41	52	45	46	48	53	
DIR. (TENS OF DEGS)		19	06	25	26	20	36	33	12	12	20	11	36	36	
YEAR OF OCCURRENCE		1994	1994	1994	1996	1994	1994	1997	1994	1994	1996	1994	1994	JUN 1994	
PRECIPITATION	NORMAL (IN)	30	2.80	2.69	3.66	2.91	6.13	8.09	6.14	6.02	8.53	6.60	4.69	2.49	60.75
	MAXIMUM MONTHLY (IN)	58	11.01	8.71	16.78	18.26	15.22	17.91	17.74	13.52	24.86	18.74	14.63	11.69	24.86
	YEAR OF OCCURRENCE		1983	1983	1982	1942	1976	1966	1941	1950	1960	1965	1982	1994	SEP 1960
	MINIMUM MONTHLY (IN)	58	0.22	0.29	0.33	0.04	0.39	1.07	1.22	1.73	1.77	0.56	0.23	0.06	0.04
	YEAR OF OCCURRENCE		1960	1948	1956	1967	1967	1952	1961	1987	1988	1997	1970	1968	APR 1967
	MAXIMUM IN 24 HOURS (IN)	58	8.45	4.70	8.80	15.23	7.04	9.21	5.83	6.72	8.71	9.58	7.67	6.45	15.23
	YEAR OF OCCURRENCE		1991	1966	1982	1942	1958	1945	1972	1988	1960	1965	1984	1994	APR 1942
	NORMAL NO. DAYS WITH:														
	PRECIPITATION ≥ 0.01	30	7.7	7.4	7.6	5.6	11.0	14.4	14.3	15.9	16.7	12.2	9.2	7.7	129.7
PRECIPITATION ≥ 1.00	30	0.7	0.8	1.0	0.7	1.9	2.9	1.7	1.5	2.7	1.7	1.4	0.7	17.7	
SNOWFALL	NORMAL (IN)	30	T	0.0	0.0	0.0	0.0	0.0	0.0	0.0	0.0	0.0	0.0	0.0	0.0
	MAXIMUM MONTHLY (IN)	50	T	0.0	T	0.0	0.0	0.0	0.0	T	0.0	0.0	0.0	0.0	T
	YEAR OF OCCURRENCE		1977		1994					1993					MAR 1994
	MAXIMUM IN 24 HOURS (IN)	50	T	0.0	0.0	0.0	0.0	0.0	0.0	T	0.0	0.0	0.0	0.0	T
	YEAR OF OCCURRENCE		1977		1994					1993					AUG 1993
	MAXIMUM SNOW DEPTH (IN)	46	0	0	0	0	0	0	0	T	0	0	0	0	T
	YEAR OF OCCURRENCE									1993					AUG 1993
NORMAL NO. DAYS WITH:															
SNOWFALL ≥ 1.0	30	0.0	0.0	0.0	0.0	0.0	0.0	0.0	0.0	0.0	0.0	0.0	0.0	0.0	

PRECIPITATION (inches) 1997 WEST PALM BEACH, FL (PBI)

YEAR	JAN	FEB	MAR	APR	MAY	JUN	JUL	AUG	SEP	OCT	NOV	DEC	ANNUAL
1968	0.56	4.44	1.48	0.72	13.82	16.78	4.66	8.14	14.01	10.24	2.51	0.06	77.42
1969	3.59	1.67	5.53	0.73	8.32	12.25	7.43	7.75	14.56	13.47	3.29	1.16	79.75
1970	4.57	2.98	11.95	1.00	5.83	8.23	3.17	5.47	7.61	4.13	0.23	0.11	55.28
1971	0.82	1.08	0.55	1.27	5.04	9.03	5.13	4.38	6.24	5.13	10.77	1.87	51.31
1972	2.47	2.55	3.99	12.62	11.19	12.34	13.25	2.76	3.72	1.20	6.98	2.08	75.15
1973	2.62	2.71	2.28	1.45	4.13	7.53	7.74	7.51	7.59	6.97	2.06	2.15	54.74
1974	8.30	0.42	2.44	1.18	2.93	4.87	11.00	5.85	5.62	9.30	3.99	2.56	58.46
1975	0.47	0.68	0.85	0.57	6.23	7.18	5.67	2.49	11.58	5.60	1.81	1.27	44.40
1976	1.09	4.59	1.84	1.26	15.22	4.52	1.67	7.29	7.74	3.75	3.29	3.06	55.32
1977	3.49	1.11	0.53	1.65	14.80	4.03	2.19	8.03	13.21	2.01	5.84	7.37	64.26
1978	3.40	2.49	2.73	0.88	4.55	10.36	5.91	2.27	6.36	6.98	10.98	5.30	62.21
1979	3.06	0.80	1.06	8.71	5.09	6.34	1.89	3.08	19.63	4.78	4.08	2.66	61.18
1980	4.11	3.85	2.53	3.90	8.06	4.26	7.61	5.02	6.76	4.02	5.28	1.27	56.67
1981	0.43	4.22	2.49	0.43	5.12	4.58	3.72	10.33	9.30	2.10	4.52	2.50	49.74
1982	1.29	2.31	16.78	7.67	6.90	10.37	2.57	5.72	6.03	4.83	14.63	1.52	80.62
1983	11.01	8.71	3.42	3.27	5.30	9.39	4.71	8.21	9.62	7.80	4.24	7.03	82.71
1984	1.36	4.49	5.06	5.99	8.44	5.84	7.34	6.39	8.69	1.67	14.39	0.13	69.79
1985	0.84	0.53	3.49	3.35	4.63	4.84	10.77	5.38	9.38	2.89	0.54	1.35	47.99
1986	6.34	1.58	5.48	0.33	1.59	9.82	10.20	4.88	4.08	8.11	6.80	10.10	69.31
1987	1.17	1.20	7.75	2.61	5.63	6.60	4.42	1.73	11.90	4.78	9.43	1.47	58.69
1988	3.38	3.04	5.51	3.65	6.94	10.95	9.01	11.38	1.77	3.54	3.86	1.88	64.91
1989	0.97	1.00	2.58	6.04	0.78	4.96	3.52	5.83	4.05	5.84	1.15	1.94	38.66
1990	1.19	1.39	1.91	2.82	6.74	6.67	10.17	6.60	11.70	3.45	1.23	1.94	55.81
1991	10.43	4.36	3.36	9.54	8.94	7.45	7.16	7.34	6.44	7.58	2.32	4.44	79.36
1992	1.69	3.26	2.61	2.64	1.59	16.08	2.90	6.12	6.99	2.82	12.56	1.85	61.11
1993	8.05	2.06	11.06	2.53	2.22	2.89	5.41	4.78	5.35	11.99	5.78	0.82	62.94
1994	5.85	3.22	2.62	7.57	4.50	10.89	5.22	10.33	11.41	4.42	8.17	11.69	85.89
1995	3.85	1.12	2.37	3.91	0.85	7.79	6.86	20.12	5.69	11.11	1.49	1.60	66.76
1996	1.54	0.67	5.06	0.78	6.52	7.56	2.77	4.24	7.53	6.54	2.06	1.55	46.82
1997	4.24	4.45	3.39	4.66	3.34	11.75	3.29	10.60	6.85	0.56	3.98	5.02	62.13
POR= 59 YRS	2.96	2.52	3.53	3.62	5.45	7.83	6.23	6.84	8.92	7.03	3.88	2.73	61.54

WBAN : 12844

AVERAGE TEMPERATURE (°F) 1997 WEST PALM BEACH, FL (PBI)

YEAR	JAN	FEB	MAR	APR	MAY	JUN	JUL	AUG	SEP	OCT	NOV	DEC	ANNUAL
1968	64.8	60.1	64.9	74.7	76.9	78.4	80.4	81.9	80.4	75.3	67.7	63.7	72.4
1969	65.1	61.7	64.7	74.8	77.0	80.4	82.8	81.4	80.5	78.8	67.7	62.7	73.1
1970	60.4	62.1	69.1	75.7	77.8	80.0	82.5	83.5	81.2	78.4	66.5	68.3	73.8
1971	65.0	67.4	65.9	71.8	78.8	80.9	82.3	83.1	81.1	79.0	73.1	73.1	75.1
1972	71.8	67.0	70.9	74.1	78.8	81.8	82.5	83.2	82.6	80.4	74.3	72.0	76.6
1973	68.7	64.0	73.6	74.5	79.2	81.7	82.1	81.7	82.0	77.5	75.0	66.4	75.5
1974	73.2	66.7	73.6	74.3	78.6	80.0	81.8	82.7	82.3	77.0	72.0	66.8	75.8
1975	71.2	72.1	71.8	73.9	77.8	79.5	79.8	81.4	80.5	77.6	71.3	66.9	75.3
1976	62.2	66.3	72.6	72.7	77.4	78.1	81.1	81.2	80.0	75.6	70.6	66.0	73.7
1977	58.5	63.6	73.7	75.0	76.9	81.2	81.9	82.5	81.0	75.3	72.6	67.3	74.1
1978	62.1	60.4	68.4	73.2	78.9	81.6	82.1	82.2	80.7	77.0	73.7	71.3	74.3
1979	62.7	63.7	68.0	74.4	76.0	80.2	82.7	82.5	81.3	77.5	73.2	67.1	74.1
1980	64.1	60.9	70.2	71.8	77.5	82.5	83.5	82.5	81.3	78.6	72.4	65.5	74.2
1981	58.7	67.6	67.9	75.7	78.5	83.4	84.1	82.8	81.1	78.1	67.9	65.2	74.3
1982	65.7	73.6	73.0	75.9	76.8	80.6	83.2	83.0	81.8	78.5	75.6	70.8	76.5
1983	64.8	66.1	66.5	72.2	77.6	80.6	84.0	84.3	81.6	76.9	70.0	68.3	74.4
1984	64.6	66.5	68.7	71.2	77.4	78.7	80.9	81.3	79.6	77.4	71.4	71.1	74.1
1985	60.7	67.5	71.3	73.1	77.3	82.3	81.0	82.9	80.3	80.4	75.7	65.0	74.8
1986	64.2	69.2	68.1	71.6	77.6	80.8	82.1	82.9	82.5	79.4	78.4	72.0	75.7
1987	64.5	68.7	70.3	69.0	77.8	82.3	83.2	84.9	82.7	76.5	73.8	68.4	75.2
1988	66.4	65.7	69.1	74.6	76.7	81.0	82.2	82.5	83.1	77.9	75.0	68.4	75.2
1989	71.3	68.5	72.2	74.8	79.5	81.9	83.0	83.6	83.1	77.6	74.3	62.5	76.0
1990	72.3	73.8	73.2	73.9	79.7	82.2	83.3	83.7	82.7	80.1	73.5	71.3	77.5
1991	71.0	68.2	72.6	77.0	80.2	81.9	83.2	83.6	82.0	78.8	71.5	70.2	76.7
1992	65.3	68.8	69.7	72.5	75.9	80.6	83.4	82.1	81.7	77.8	75.5	69.5	75.2
1993	71.5	66.3	69.0	71.1	77.7	81.6	82.9	83.0	82.3	79.0	74.4	65.6	75.4
1994	68.0	71.7	71.0	77.0	78.7	81.7	81.9	81.4	80.6	77.8	74.8	69.4	76.2
1995	64.2	65.0	72.0	75.7	80.7	80.8	82.2	82.7	82.4	80.5	70.7	65.7	75.2
1996	65.7	64.3	67.8	73.3	79.3	80.7	83.5	82.0	82.1	77.8	72.9	68.5	74.8
1997	66.4	72.2	74.6	74.2	78.7	81.0	83.0	82.2	81.4	77.9	71.8	67.3	75.9
POR= 59 YRS	66.0	67.0	70.3	73.9	77.8	80.8	82.5	82.7	81.6	77.8	72.3	67.8	75.0

WBAN : 12844

HEATING DEGREE DAYS (base 65°F) 1997 WEST PALM BEACH, FL (PBI)

YEAR	JUL	AUG	SEP	OCT	NOV	DEC	JAN	FEB	MAR	APR	MAY	JUN	TOTAL
1968-69	0	0	0	6	60	129	55	110	88	0	0	0	448
1969-70	0	0	0	0	41	114	176	105	36	0	0	0	472
1970-71	0	0	0	0	66	32	113	73	79	18	0	0	381
1971-72	0	0	0	0	0	0	4	48	0	0	0	0	52
1972-73	0	0	0	0	5	37	56	81	4	5	0	0	188
1973-74	0	0	0	0	2	104	0	65	1	2	0	0	174
1974-75	0	0	0	0	4	67	18	3	15	5	0	0	112
1975-76	0	0	0	0	40	74	132	56	4	0	0	0	306
1976-77	0	0	0	0	15	68	220	93	8	0	0	0	404
1977-78	0	0	0	0	18	77	161	148	41	0	0	0	445
1978-79	0	0	0	0	0	2	124	118	23	0	0	0	267
1979-80	0	0	0	0	11	46	96	153	50	2	0	0	358
1980-81	0	0	0	0	28	76	193	41	27	0	0	0	365
1981-82	0	0	0	0	33	116	86	2	4	0	0	0	241
1982-83	0	0	0	0	0	48	88	36	58	6	0	0	236
1983-84	0	0	0	0	14	82	85	60	46	4	0	0	291
1984-85	0	0	0	0	10	30	176	85	8	7	0	0	316
1985-86	0	0	0	0	6	102	93	28	67	0	0	0	296
1986-87	0	0	0	0	0	2	104	22	10	39	0	0	177
1987-88	0	0	0	0	8	42	62	68	39	0	0	0	219
1988-89	0	0	0	0	0	49	7	66	26	0	0	0	148
1989-90	0	0	0	8	2	146	14	7	0	1	0	0	178
1990-91	0	0	0	2	0	11	18	44	17	0	0	0	92
1991-92	0	0	0	0	23	10	73	21	22	4	0	0	153
1992-93	0	0	0	0	9	27	11	28	28	1	0	0	104
1993-94	0	0	0	0	11	63	46	14	20	0	0	0	154
1994-95	0	0	0	0	0	31	91	93	3	0	0	0	218
1995-96	0	0	0	0	16	115	105	105	62	6	0	0	409
1996-97	0	0	0	0	1	35	79	13	0	2	0	0	130
1997-	0	0	0	0	8	75							

WBAN : 12844

COOLING DEGREE DAYS (base 65°F) 1997 WEST PALM BEACH, FL (PBI)

YEAR	JAN	FEB	MAR	APR	MAY	JUN	JUL	AUG	SEP	OCT	NOV	DEC	ANNUAL
1969	64	23	87	300	380	471	561	515	468	438	128	50	3485
1970	42	29	171	329	403	459	551	580	495	423	119	140	3741
1971	121	147	116	227	434	484	542	569	486	440	249	257	4072
1972	223	112	192	277	436	511	547	573	534	486	296	261	4448
1973	177	60	279	296	446	509	539	526	517	397	311	154	4211
1974	262	117	274	288	429	457	526	552	528	378	218	130	4159
1975	216	208	230	280	403	442	467	514	472	397	235	139	4003
1976	53	97	251	237	393	404	507	509	457	334	193	105	3540
1977	25	62	287	308	376	493	531	548	484	329	253	155	3851
1978	78	27	152	252	440	506	540	540	477	380	265	203	3860
1979	59	87	123	287	349	461	555	549	496	396	266	117	3745
1980	75	37	218	213	395	530	582	551	492	427	258	100	3878
1981	1	118	124	325	425	557	599	558	487	414	127	129	3864
1982	116	249	263	336	371	476	568	566	510	425	324	234	4438
1983	87	73	110	229	396	474	597	604	506	378	172	191	3817
1984	81	110	165	198	391	417	500	514	444	391	208	226	3645
1985	49	159	210	256	389	523	502	562	464	485	335	107	4041
1986	76	151	170	206	397	481	536	561	534	455	410	224	4201
1987	95	134	180	166	402	522	574	626	539	363	278	152	4031
1988	114	94	173	293	370	488	539	548	550	408	304	162	4043
1989	208	171	257	302	454	515	563	585	553	406	288	75	4377
1990	247	259	262	276	460	520	574	591	542	474	263	211	4679
1991	211	140	263	366	478	514	571	582	518	436	223	180	4482
1992	88	136	175	238	345	476	575	537	507	404	332	172	3985
1993	218	71	158	192	400	506	564	564	527	439	298	91	4028
1994	145	210	214	365	435	508	533	515	473	401	305	175	4279
1995	74	102	228	330	499	483	542	558	528	490	196	141	4171
1996	136	93	155	263	451	478	579	534	519	405	246	153	4012
1997	128	223	305	285	431	490	564	541	500	408	218	154	4247

SNOWFALL (inches) 1997 WEST PALM BEACH, FL (PBI)

YEAR	JUL	AUG	SEP	OCT	NOV	DEC	JAN	FEB	MAR	APR	MAY	JUN	TOTAL
1970-71	0.0	0.0	0.0	0.0	0.0	0.0	0.0	0.0	0.0	0.0	0.0	0.0	0.0
1971-72	0.0	0.0	0.0	0.0	0.0	0.0	0.0	0.0	0.0	0.0	0.0	0.0	0.0
1972-73	0.0	0.0	0.0	0.0	0.0	0.0	0.0	0.0	0.0	0.0	0.0	0.0	0.0
1973-74	0.0	0.0	0.0	0.0	0.0	0.0	0.0	0.0	0.0	0.0	0.0	0.0	0.0
1974-75	0.0	0.0	0.0	0.0	0.0	0.0	0.0	0.0	0.0	0.0	0.0	0.0	0.0
1975-76	0.0	0.0	0.0	0.0	0.0	0.0	0.0	0.0	0.0	0.0	0.0	0.0	0.0
1976-77	0.0	0.0	0.0	0.0	0.0	0.0	T	0.0	0.0	0.0	0.0	0.0	T
1977-78	0.0	0.0	0.0	0.0	0.0	0.0	0.0	0.0	0.0	0.0	0.0	0.0	0.0
1978-79	0.0	0.0	0.0	0.0	0.0	0.0	0.0	0.0	0.0	0.0	0.0	0.0	0.0
1979-80	0.0	0.0	0.0	0.0	0.0	0.0	0.0	0.0	0.0	0.0	0.0	0.0	0.0
1980-81	0.0	0.0	0.0	0.0	0.0	0.0	0.0	0.0	0.0	0.0	0.0	0.0	0.0
1981-82	0.0	0.0	0.0	0.0	0.0	0.0	0.0	0.0	0.0	0.0	0.0	0.0	0.0
1982-83	0.0	0.0	0.0	0.0	0.0	0.0	0.0	0.0	0.0	0.0	0.0	0.0	0.0
1983-84	0.0	0.0	0.0	0.0	0.0	0.0	0.0	0.0	0.0	0.0	0.0	0.0	0.0
1984-85	0.0	0.0	0.0	0.0	0.0	0.0	0.0	0.0	0.0	0.0	0.0	0.0	0.0
1985-86	0.0	0.0	0.0	0.0	0.0	0.0	0.0	0.0	0.0	0.0	0.0	0.0	0.0
1986-87	0.0	0.0	0.0	0.0	0.0	0.0	0.0	0.0	0.0	0.0	0.0	0.0	0.0
1987-88	0.0	0.0	0.0	0.0	0.0	0.0	0.0	0.0	0.0	0.0	0.0	0.0	0.0
1988-89	0.0	0.0	0.0	0.0	0.0	0.0	0.0	0.0	0.0	0.0	0.0	0.0	0.0
1989-90	0.0	0.0	0.0	0.0	0.0	0.0	0.0	0.0	0.0	0.0	0.0	0.0	0.0
1990-91	0.0	0.0	0.0	0.0	0.0	0.0	0.0	0.0	0.0	0.0	0.0	0.0	0.0
1991-92	0.0	0.0	0.0	0.0	0.0	0.0	0.0	0.0	0.0	0.0	0.0	0.0	0.0
1992-93	0.0	0.0	0.0	0.0	0.0	0.0	0.0	0.0	0.0	0.0	0.0	0.0	0.0
1993-94	0.0	T	0.0	0.0	0.0	0.0	0.0	0.0	T	0.0	0.0	0.0	T
1994-95	0.0	0.0	0.0	0.0	0.0	0.0	0.0	0.0	0.0	0.0	0.0	0.0	0.0
1995-96	0.0	0.0	0.0	0.0	0.0	0.0	0.0	0.0	0.0	0.0	0.0	0.0	0.0
1996-97	0.0	0.0	0.0	0.0	0.0	0.0	0.0	0.0	0.0	0.0	0.0	0.0	0.0
1997-	0.0	0.0	0.0	0.0	0.0	0.0	0.0	0.0	0.0	0.0	0.0	0.0	0.0
POR= 52 YRS	0.0	T	0.0	0.0	0.0	0.0	T	0.0	T	0.0	0.0	0.0	0.0

WBAN : 12844

REFERENCE NOTES:

<p>PAGE 1: THE TEMPERATURE GRAPH SHOWS NORMAL MAXIMUM AND NORMAL MINIMUM DAILY TEMPERATURES (SOLID CURVES) AND THE ACTUAL DAILY HIGH AND LOW TEMPERATURES (VERTICAL BARS).</p> <p>PAGE 2 AND 3: H/C INDICATES HEATING AND COOLING DEGREE DAYS. RH INDICATES RELATIVE HUMIDITY W/O INDICATES WEATHER AND OBSTRUCTIONS S INDICATES SUNSHINE. PR INDICATES PRESSURE. CLOUDINESS ON PAGE 3 IS THE SUM OF THE CEILOMETER AND SATELLITE DATA NOT TO EXCEED EIGHT EIGHTHS(OKTAS).</p> <p>GENERAL: T INDICATES TRACE PRECIPITATION, AN AMOUNT GREATER THAN ZERO BUT LESS THAN THE LOWEST REPORTABLE VALUE. + INDICATES THE VALUE ALSO OCCURS ON EARLIER DATES. BLANK ENTRIES DENOTE MISSING OR UNREPORTED DATA. NORMALS ARE 30-YEAR AVERAGES (1961 - 1990). ASOS INDICATES AUTOMATED SURFACE OBSERVING SYSTEM. PM INDICATES THE LAST DAY OF THE PREVIOUS MONTH. POR (PERIOD OF RECORD) BEGINS WITH THE JANUARY DATA MONTH AND IS THE NUMBER OF YEARS USED TO COMPUTE THE MEAN. INDIVIDUAL MONTHS WITHIN THE POR MAY BE MISSING. WHEN THE POR FOR A NORMAL IS LESS THAN 30 YEARS, THE NORMAL IS PROVISIONAL AND IS BASED ON THE NUMBER OF YEARS INDICATED. 0.* OR * INDICATES THE VALUE OR MEAN-DAYS-WITH IS BETWEEN 0.00 AND 0.05. CLOUDINESS FOR ASOS STATIONS DIFFERS FROM THE NON-ASOS OBSERVATION TAKEN BY A HUMAN OBSERVER. ASOS STATION CLOUDINESS IS BASED ON TIME-AVERAGED CEILOMETER DATA FOR CLOUDS AT OR BELOW 12,000 FEET AND ON SATELLITE DATA FOR CLOUDS ABOVE 12,000 FEET. THE NUMBER OF DAYS WITH CLEAR, PARTLY CLOUDY, AND CLOUDY CONDITIONS FOR ASOS STATIONS IS THE SUM OF THE CEILOMETER AND SATELLITE DATA FOR THE SUNRISE TO SUNSET PERIOD.</p>	<p>GENERAL CONTINUED: CLEAR INDICATES 0 - 2 OKTAS, PARTLY CLOUDY INDICATES 3 - 6 OKTAS, AND CLOUDY INDICATES 7 OR 8 OKTAS. WHEN AT LEAST ONE OF THE ELEMENTS (CEILOMETER OR SATELLITE) IS MISSING, THE DAILY CLOUDINESS IS NOT COMPUTED. WIND DIRECTION IS RECORDED IN TENS OF DEGREES (2 DIGITS) CLOCKWISE FROM TRUE NORTH. "00" INDICATES CALM. "36" INDICATES TRUE NORTH. RESULTANT WIND IS THE VECTOR AVERAGE OF THE SPEED AND DIRECTION. AVERAGE TEMPERATURE IS THE SUM OF THE MEAN DAILY MAXIMUM AND MINIMUM TEMPERATURE DIVIDED BY 2. SNOWFALL DATA COMPRISE ALL FORMS OF FROZEN PRECIPITATION, INCLUDING HAIL. A HEATING (COOLING) DEGREE DAY IS THE DIFFERENCE BETWEEN THE AVERAGE DAILY TEMPERATURE AND 65° F. DRY BULB IS THE TEMPERATURE OF THE AMBIENT AIR. DEW POINT IS THE TEMPERATURE TO WHICH THE AIR MUST BE COOLED TO ACHIEVE 100 PERCENT RELATIVE HUMIDITY. WET BULB IS THE TEMPERATURE THE AIR WOULD HAVE IF THE MOISTURE CONTENT WAS INCREASED TO 100 PERCENT RELATIVE HUMIDITY.</p> <p>ON JULY 1, 1996, THE NATIONAL WEATHER SERVICE BEGAN USING THE "METAR" OBSERVATION CODE THAT WAS ALREADY EMPLOYED BY MOST OTHER NATIONS OF THE WORLD. THE MOST NOTICEABLE DIFFERENCE IN THIS ANNUAL PUBLICATION WILL BE THE CHANGE IN UNITS FROM TENTHS TO EIGHTHS(OKTAS) FOR REPORTING THE AMOUNT OF SKY COVER.</p>
---	---

1997
WEST PALM BEACH,
FLORIDA (PBI)

West Palm Beach and Palm Beach, both located on the coastal sand ridge of southeastern Florida, are separated by Lake Worth, a portion of the Inland Waterway. The entire coastal ridge is only about 5 miles wide and in early times the Everglades reached to its western edge. Now most of the swampland has been drained and is devoted to agriculture, the peat-like muck soil being very fertile when fortified with certain lacking minerals. The Atlantic Ocean forms the eastern edge of Palm Beach, and the Gulf Stream flows northward about 2 miles offshore, its nearest approach to the Florida coast.

Because of its southerly location and marine influences, the Palm Beach area has a notably equable climate. Cold continental air must either travel over water or flow down the Florida Peninsula to reach the area, and in either case its cold is appreciably modified. Actually, the coldest weather, with infrequent frosts, is experienced the second or third night after the arrival of the cold air, due to the loss of heat through radiation cooling. The frequency of temperatures as low as the freezing mark is about one per three years at the National Weather Service Office, but in the farmlands farther from the coast the frequency of light freezes is much higher.

Summer temperatures are tempered by the ocean breeze, and by the frequent formation of cumulus clouds, which shade the land somewhat without completely obscuring the sun. Temperatures of 89 degrees or higher have occurred in all months of the year, but the 100 degree mark has rarely occurred. August is the warmest month and has an average maximum temperature of about 90 degrees. The occurrence of 90 degree temperatures in August is so common that such can be expected on more than two-thirds of the days. However, temperatures as high as 100 degrees rarely occur.

The moist, unstable air in this area results in frequent showers, usually of short duration. Thunderstorms are frequent during the summer, occurring every other day. Rainfall is heaviest during the summer and fall, the fall rainfall occurring from occasional heavy rains accompanying tropical disturbances. High winds, associated with hurricanes, have been estimated at about 140 mph in the city.

Flying weather is usually very good in this area, with instrument weather occurring only rarely. Heavy fog occurs on an average of only one morning a month in the winter and spring, and almost never in the summer and fall.

STATION LOCATION

WEST PALM BEACH, FLORIDA

LOCATION	OCCUPIED FROM	OCCUPIED TO	AIRLINE DISTANCES AND DIRECTIONS FROM PREVIOUS LOCATION	LATITUDE NORTH	LONGITUDE WEST	ELEVATION ABOVE											A U T O M A T I C T H E R M O M E T E R	* Type M = AMOS T = AUTOB S = ASOS W = AWOS	REMARKS
						SEA LEVEL	GROUND												
							G	W	E	P	S	T	R	W	8	H			
Morrison Field South side, 4.5 miles SW of Post Office	6/24/38	8/16/46		26°41'	80°06'	15	26	5	5										CAA Station established. Weather Bureau effective 10/15/45.
Morrison Field South side	8/16/46	2/17/48	250 ft. SSW	26°41'	80°06'	15	26	5	5										Building moved.
Morrison Field North side	2/17/48	4/27/53	5/8 mi. N	26°41'	80°06'	18	41	5	5										
Palm Beach Int'l AP South side	4/27/53	3/1/77	5/8 mi. S	26°41'	80°06'	15	a22	c18	d18				18				b4		Office moved to new location and name of airport changed.
National Weather Svc. Bldg., Palm Beach International Airport	3/1/77	Present	0.9 mi. W	26°41'	80°07'	15	e22	g19	h33	5	5	NA	3	3	NA	e4	f5	NA	a - 69 feet to 3/1/59. b - Commissioned 2/1/64 on field 2110 feet west of thermometer site. c - Removed prior to 12/1966. d - Added as standby 9/1/74. e - Same site as prior to 3/1/77. f - Minor adjustment & type change 3/3/86. g - Effective 3/3/86. h - Raised 4/21/86. S ASOS commissioned 04/01/93

SUBSCRIPTION: Price and ordering information available through: National Climatic Data Center, Federal Building, Asheville, North Carolina 28801.
 INQUIRIES/COMMENTS CALL: (704) 271-4800

National Climatic Data Center
 151 Patton Avenue, Rm 120
 Asheville NC 28801-5001

OFFICIAL BUSINESS
 PENALTY FOR PRIVATE USE \$300
 FORWARD AND ADDRESS CORRECTION

FIRST CLASS
 POSTAGE & FEES PAID
 United States Department of Commerce
 NOAA Permit No. G - 19