

1997

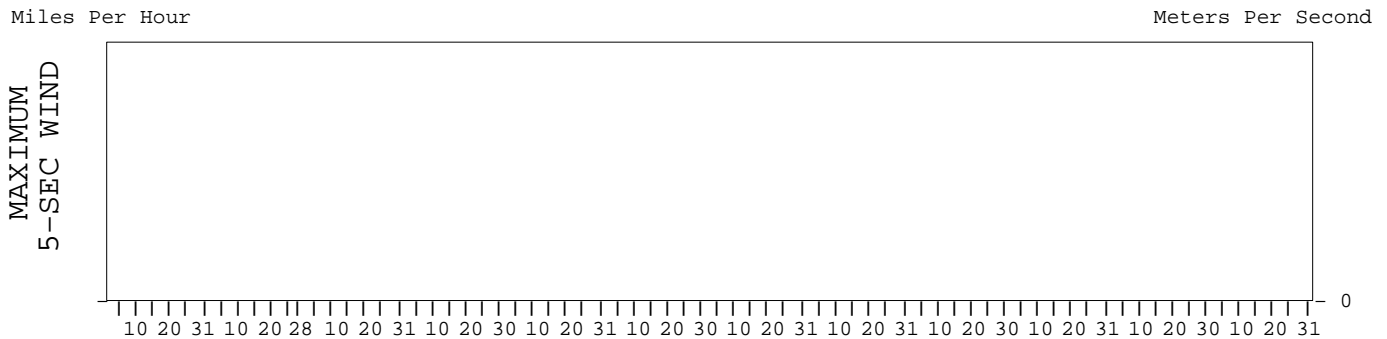
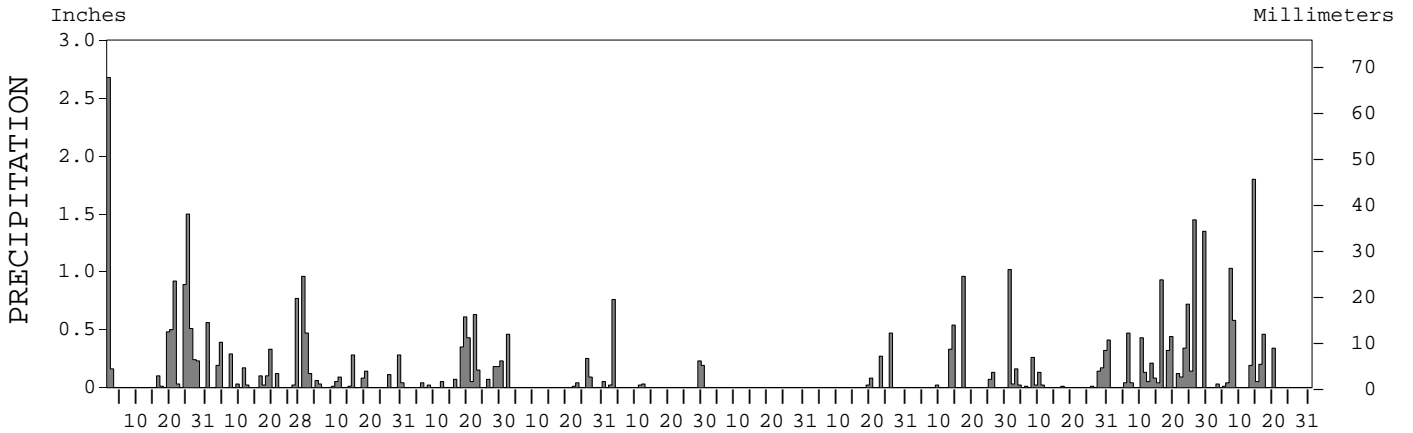
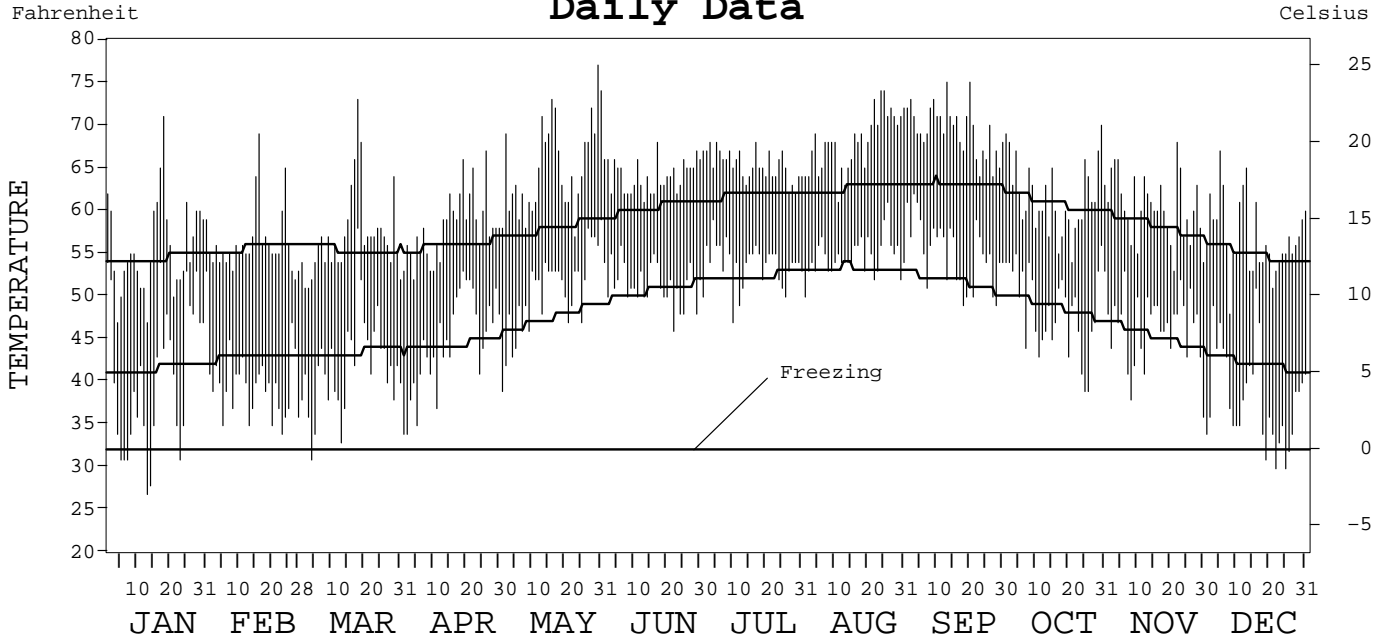
LOCAL CLIMATOLOGICAL DATA ANNUAL SUMMARY WITH COMPARATIVE DATA



ISSN 0198-0726

EUREKA, CALIFORNIA (EKA)

Daily Data



I CERTIFY THAT THIS IS AN OFFICIAL PUBLICATION OF THE NATIONAL OCEANIC AND ATMOSPHERIC ADMINISTRATION, AND IS COMPILED FROM RECORDS ON FILE AT THE NATIONAL CLIMATIC DATA CENTER.

NATIONAL OCEANIC AND ATMOSPHERIC ADMINISTRATION

NATIONAL ENVIRONMENTAL AND INFORMATION SERVICE
NATIONAL ENVIRONMENTAL AND INFORMATION SERVICE
NATIONAL ENVIRONMENTAL AND INFORMATION SERVICE

NATIONAL CLIMATIC DATA CENTER
ASHEVILLE, NORTH CAROLINA

Jenneth A. Schickel
ACTING DIRECTOR
NATIONAL CLIMATIC DATA CENTER

METEOROLOGICAL DATA FOR 1997

EUREKA, CA (EKA)

LATITUDE: 40° 48' 0" N LONGITUDE: 124° 09' 0" W ELEVATION (FT): GRND: 19 BARO: 20 TIME ZONE: PACIFIC (UTC+ 8) WBAN: 24213

ELEMENT		JAN	FEB	MAR	APR	MAY	JUN	JUL	AUG	SEP	OCT	NOV	DEC	YEAR	
TEMPERATURE °F	MEAN DAILY MAXIMUM	55.9	56.3	57.1	58.1	65.1	64.1	65.3	68.1	69.4	61.7	60.4	57.0	61.5	
	HIGHEST DAILY MAXIMUM	71	69	73	67	77	68	68	74	75	70	68	67	77	
	DATE OF OCCURRENCE	18	16	18	26	30	17	17+	25+	20+	30	22	05	MAY 30	
	MEAN DAILY MINIMUM	41.1	39.4	41.8	44.7	50.5	51.5	53.7	54.7	55.0	48.5	46.3	38.3	47.1	
	LOWEST DAILY MINIMUM	27	34	31	34	39	46	47	50	49	39	36	30	27	
	DATE OF OCCURRENCE	13	23	04	02+	01	22	10	01	28+	26+	30	25+	JAN 13	
	AVERAGE DRY BULB	48.5	47.9	49.5	51.4	57.8	57.8	59.5	61.4	62.2	55.1	53.4	47.7	54.4	
	MEAN WET BULB														
	MEAN DEW POINT														
	NUMBER OF DAYS WITH:														
	MAXIMUM ≥ 90°	0	0	0	0	0	0	0	0	0	0	0	0	0	0
	MAXIMUM ≤ 32°	0	0	0	0	0	0	0	0	0	0	0	0	0	0
MINIMUM ≤ 32°	6	0	1	0	0	0	0	0	0	0	0	4	11		
MINIMUM ≤ 0°	0	0	0	0	0	0	0	0	0	0	0	0	0		
H/C	HEATING DEGREE DAYS	501	476	475	401	217	209	163	106	82	300	341	529	3800	
	COOLING DEGREE DAYS	0	0	1	0	4	0	0	3	5	0	0	0	13	
RH	MEAN (PERCENT)														
	HOUR 04 LST														
	HOUR 10 LST														
	HOUR 16 LST														
	HOUR 22 LST														
S	PERCENT POSSIBLE SUNSHINE														
W/O	NUMBER OF DAYS WITH:														
	HEAVY FOG (VISBY ≤ 1/4 MI)	1	1	2	0	4	0	0	2	3	7	2	1	23	
	THUNDERSTORMS	1	0	0	0	0	0	0	0	0	0	1	0	2	
CLOUDINESS	AVG. SKY COVER (OKTAS)	6	5	6	6			4		4		6			
	SUNRISE - SUNSET														
	MIDNIGHT - MIDNIGHT														
	NUMBER OF DAYS WITH:														
	CLEAR	4	3	5	2	2		11	7	7	3	1	8		
	PARTLY CLOUDY	7	15	12	11	16		11	12	16	15	11	9		
CLOUDY	20	10	14	17	12		9	10	7	12	18	13			
PR	MEAN STATION PRESS. (IN.)														
	MEAN SEA-LEVEL PRESS. (IN.)														
WINDS	RESULTANT SPEED (MPH)														
	RES. DIR. (TENS OF DEGS.)														
	MEAN SPEED (MPH)														
	PREVAIL.DIR.(TENS OF DEGS.)														
	MAXIMUM 2-MINUTE WIND:														
	SPEED (MPH)														
	DIR. (TENS OF DEGS.)														
	DATE OF OCCURRENCE														
	PEAK GUST :														
	SPEED (MPH)														
DIR. (TENS OF DEGS.)															
DATE OF OCCURRENCE															
PRECIPITATION	WATER EQUIVALENT:														
	TOTAL (IN.)	8.81	2.55	2.73	3.06	0.90	1.25	T	0.84	2.05	2.73	7.39	4.73	37.04	
	GREATEST 24-HOUR (IN.)	2.68	0.77	0.96	0.63	0.46	0.76	T	0.47	0.96	1.02	1.45	1.98	2.68	
	DATE OF OCCURRENCE	01	27	01	22	02	03	21+	26	17	01	26	13-14	JUL 21+	
	NUMBER OF DAYS WITH:														
	PRECIPITATION ≥ 0.01	14	13	15	14	6	6	0	4	6	15	19	11	123	
PRECIPITATION ≥ 0.10	12	9	7	8	2	3	0	2	4	8	13	7	75		
PRECIPITATION ≥ 1.00	2	0	0	0	0	0	0	0	0	1	2	2	7		
SNOWFALL	SNOW, ICE PELLETS, HAIL:														
	TOTAL (IN.)	T	0.0	T	0.0	0.0	0.0	0.0	0.0	0.0	0.0	0.0	0.0	0.0	
	GREATEST 24-HOUR (IN.)	T	0.0	T	0.0	0.0	0.0	0.0	0.0	0.0	0.0	0.0	0.0	0.0	
	DATE OF OCCURRENCE	21		02										MAR 02	
	MAXIMUM SNOW DEPTH (IN.)	0	0	0	0	0	0	0	0	0	0	0	0	0	
	NUMBER OF DAYS WITH:														
SNOWFALL ≥ 1.0	0	0	0	0	0	0	0	0	0	0	0	0	0		

NORMALS, MEANS, AND EXTREMES

EUREKA, CA (EKA)

LATITUDE: 40° 48' 0 " N LONGITUDE: 124° 09' 0 " W ELEVATION (FT): GRND: 19 BARO: 20 TIME ZONE: PACIFIC (UTC+ 8) WBAN: 24213

		POR	JAN	FEB	MAR	APR	MAY	JUN	JUL	AUG	SEP	OCT	NOV	DEC	YEAR
TEMPERATURE °F	NORMAL DAILY MAXIMUM	30	54.4	55.6	55.4	55.9	57.9	60.3	61.8	62.6	63.0	60.8	58.1	54.8	58.4
	MEAN DAILY MAXIMUM	56	54.2	55.2	55.2	56.1	58.1	60.4	61.6	62.4	62.7	60.8	57.9	54.9	58.3
	HIGHEST DAILY MAXIMUM	87	78	85	78	80	84	85	76	82	86	87	78	77	87
	YEAR OF OCCURRENCE		1986	1930	1914	1989	1939	1945	1992	1991	1983	1993	1987	1963	OCT 1993
	MEAN OF EXTREME MAXS.	56	65.2	66.5	65.4	66.1	68.5	68.3	67.8	69.7	73.5	73.7	68.2	64.9	68.2
	NORMAL DAILY MINIMUM	30	41.5	42.9	43.4	44.3	47.5	50.6	52.3	53.1	51.6	48.6	45.2	42.0	46.9
	MEAN DAILY MINIMUM	56	41.3	42.7	43.1	44.7	47.8	50.6	52.3	53.0	51.6	48.6	45.0	42.1	46.9
	LOWEST DAILY MINIMUM	87	25	27	29	32	36	41	45	44	41	32	29	21	21
	YEAR OF OCCURRENCE		1937	1990	1917	1929	1954	1966	1924	1935	1946	1971	1994	1972	DEC 1972
	MEAN OF EXTREME MINS.	56	31.6	33.4	34.8	37.4	41.0	45.6	48.2	49.1	45.7	40.8	35.6	32.4	39.6
	NORMAL DRY BULB	30	48.0	49.3	49.4	50.2	52.8	55.5	57.0	57.9	57.3	54.7	51.7	48.4	52.7
	MEAN DRY BULB	56	47.8	49.0	49.1	50.3	53.0	55.5	56.9	57.8	57.1	54.7	51.4	48.5	52.6
	MEAN WET BULB														
	MEAN DEW POINT														
	NORMAL NO. DAYS WITH:														
MAXIMUM ≥ 90°	30	0.0	0.0	0.0	0.0	0.0	0.0	0.0	0.0	0.0	0.0	0.0	0.0	0.0	
MAXIMUM ≤ 32°	30	0.0	0.0	0.0	0.0	0.0	0.0	0.0	0.0	0.0	0.0	0.0	0.0	0.0	
MINIMUM ≤ 32°	30	1.6	0.9	0.2	0.0	0.0	0.0	0.0	0.0	0.0	*	0.4	1.9	5.0	
MINIMUM ≤ 0°	30	0.0	0.0	0.0	0.0	0.0	0.0	0.0	0.0	0.0	0.0	0.0	0.0	0.0	
H/C	NORMAL HEATING DEG. DAYS	30	527	440	484	444	378	285	248	223	234	319	399	515	4496
	NORMAL COOLING DEG. DAYS	30	0	0	0	0	0	0	0	0	0	0	0	0	0
RH	NORMAL (PERCENT)														
	HOUR 04 LST														
	HOUR 10 LST														
	HOUR 16 LST														
	HOUR 22 LST														
S	PERCENT POSSIBLE SUNSHINE	84	43	46	52	57	58	59	55	51	55	50	44	41	51
W/O	MEAN NO. DAYS WITH:														
	HEAVY FOG (VISBY ≤ 1/4 MI)	74	4.1	2.7	1.9	1.6	1.2	2.1	3.5	5.3	7.6	9.5	6.0	4.3	49.8
	THUNDERSTORMS	74	0.7	0.6	0.4	0.2	0.2	0.2	0.2	0.1	0.3	0.4	0.6	0.6	4.5
CLOUDINESS	MEAN:														
	SUNRISE-SUNSET (OKTAS)	54	5.8	5.9	5.8	5.6	5.4	5.2	5.1	5.3	4.8	5.1	5.7	5.6	5.4
	MIDNIGHT-MIDNIGHT (OKTAS)	2	2.6	3.2	0.0	0.0	2.6	0.0	0.0	0.0	2.8	2.4	0.0	2.4	1.3
	MEAN NO. DAYS WITH:														
	CLEAR	87	5.9	5.3	5.6	6.1	6.4	7.2	6.6	5.5	8.6	8.0	6.1	6.3	77.6
PARTLY CLOUDY	87	6.2	5.8	7.7	8.3	9.9	9.6	10.7	10.7	8.5	8.3	6.6	6.3	98.6	
CLOUDY	87	18.9	17.2	17.7	15.6	14.7	13.1	13.3	14.3	12.6	14.3	16.9	17.9	186.5	
PR	MEAN STATION PRESSURE (IN)														
	MEAN SEA-LEVEL PRES. (IN)														
WINDS	MEAN SPEED (MPH)	54	6.9	7.2	7.6	8.0	7.9	7.4	6.8	5.8	5.5	5.6	6.0	6.4	6.8
	PREVAIL. DIR (TENS OF DEGS)														
	FASTEST MILE:														
	SPEED (MPH)	83	54	48	48	49	40	39	35	34	44	56	55	56	56
	DIR. (TENS OF DEGS)		S	SW	SW	N	NW	NW	N	N	N	SW	S	S	SW
YEAR OF OCCURRENCE		1955	1960	1953	1915	1955	1949	1986	1920	1941	1962	1981	1931	OCT 1962	
PEAK GUST:															
SPEED (MPH)															
DIR. (TENS OF DEGS)															
YEAR OF OCCURRENCE															
PRECIPITATION	NORMAL (IN)	30	6.00	4.73	5.32	2.88	1.44	0.51	0.13	0.48	0.89	2.67	6.44	6.04	37.53
	MAXIMUM MONTHLY (IN)	87	13.92	13.94	13.97	10.68	6.05	2.57	1.34	3.42	3.56	13.04	16.58	21.26	21.26
	YEAR OF OCCURRENCE		1969	1938	1938	1963	1960	1954	1916	1983	1925	1950	1973	1996	DEC 1996
	MINIMUM MONTHLY (IN)	87	0.66	0.50	0.07	0.31	0.03	0.00	0.00	0.00	0.00	0.00	T	0.52	0.00
	YEAR OF OCCURRENCE		1985	1923	1926	1956	1955	1917	1967	1940	1929	1917	1967	1976	JUL 1967
	MAXIMUM IN 24 HOURS (IN)	87	4.42	4.88	4.02	2.56	2.23	1.73	1.18	2.21	1.54	5.83	4.55	4.86	5.83
	YEAR OF OCCURRENCE		1912	1959	1975	1983	1943	1943	1916	1983	1977	1950	1926	1996	OCT 1950
	NORMAL NO. DAYS WITH:														
PRECIPITATION ≥ 0.01	30	14.3	13.8	16.2	11.4	7.6	5.0	2.1	3.0	4.2	8.7	15.1	15.4	116.8	
PRECIPITATION ≥ 1.00	30	1.6	0.9	0.8	0.4	0.0	0.1	0.0	0.1	0.1	0.5	1.7	1.3	7.5	
SNOWFALL	NORMAL (IN)	30	0.1	0.2	0.*	T	0.0	0.0	0.0	0.0	0.0	0.0	0.*	0.1	0.4
	MAXIMUM MONTHLY (IN)	87	3.0	3.5	1.0	T	0.0	0.0	0.0	0.0	0.0	0.0	0.1	1.9	3.5
	YEAR OF OCCURRENCE		1935	1989	1966	1995							1977	1972	FEB 1989
	MAXIMUM IN 24 HOURS (IN)	87	3.0	2.0	1.0	T	0.0	0.0	0.0	0.0	0.0	0.0	0.1	1.9	3.0
	YEAR OF OCCURRENCE		1935	1989	1966	1995							1977	1972	JAN 1935
	MAXIMUM SNOW DEPTH (IN)	55	0	1	1	0	0	0	0	0	0	0	0	0	1
	YEAR OF OCCURRENCE			1989	1966										MAR 1966
	NORMAL NO. DAYS WITH:														
SNOWFALL ≥ 1.0	30	0.0	0.1	0.0	0.0	0.0	0.0	0.0	0.0	0.0	0.0	0.0	0.1	0.2	

PRECIPITATION (inches) 1997 EUREKA, CA (EKA)

YEAR	JAN	FEB	MAR	APR	MAY	JUN	JUL	AUG	SEP	OCT	NOV	DEC	ANNUAL
1968	7.59	2.93	3.85	0.40	1.04	0.20	0.04	1.98	0.60	2.81	5.88	8.32	35.64
1969	13.92	7.82	1.56	3.22	1.01	0.34	0.05	T	0.36	3.20	3.49	9.60	44.57
1970	12.46	3.15	2.70	1.54	1.38	0.29	T	T	0.32	2.11	13.20	10.24	47.39
1971	5.41	3.28	7.91	2.92	1.28	1.51	0.16	0.55	2.08	0.92	6.36	6.38	38.76
1972	7.96	5.93	5.08	2.27	1.11	0.88	0.01	0.07	1.06	1.97	5.41	7.42	39.17
1973	6.47	3.85	7.10	0.35	0.85	0.23	T	0.08	2.35	4.14	16.58	7.02	49.02
1974	6.02	5.98	6.98	3.15	0.42	0.33	0.11	0.32	T	1.76	2.75	6.40	34.22
1975	5.20	7.68	10.73	3.29	1.05	0.58	0.10	0.58	0.01	6.77	4.72	5.38	46.09
1976	1.88	7.51	3.12	2.80	0.54	0.14	0.20	1.70	0.04	0.28	2.98	0.52	21.71
1977	1.90	2.24	4.33	1.20	2.10	0.07	T	0.20	3.35	2.79	4.51	6.60	29.29
1978	4.52	6.06	2.88	4.10	0.82	0.34	0.03	0.59	2.72	0.04	2.39	1.16	25.65
1979	3.82	6.26	1.70	3.94	2.25	0.05	0.31	0.13	1.15	6.14	6.19	3.75	35.69
1980	3.19	4.67	6.14	4.18	1.70	0.42	T	0.07	0.14	1.38	2.49	6.10	30.48
1981	7.67	3.72	4.64	0.71	2.02	0.57	T	0.01	0.97	3.71	9.39	9.88	43.29
1982	4.75	5.76	7.06	5.97	0.07	0.78	0.08	0.03	0.62	4.89	7.83	10.30	48.14
1983	8.48	9.18	10.73	5.47	1.12	0.65	0.89	3.42	0.87	1.87	10.40	14.13	67.21
1984	0.76	5.18	4.70	2.76	2.51	1.07	0.03	0.05	0.55	3.67	15.15	4.27	40.70
1985	0.66	3.69	4.68	0.45	1.14	0.89	0.15	0.52	1.06	4.07	2.98	2.78	23.07
1986	7.19	10.08	6.12	1.46	2.34	0.21	0.02	T	2.70	1.75	1.85	3.83	37.55
1987	6.48	3.38	6.10	1.15	0.41	0.26	0.20	0.06	0.02	1.05	4.23	10.92	34.26
1988	7.13	0.54	1.18	2.06	2.70	2.22	0.05	T	0.12	0.41	8.93	6.26	31.60
1989	4.71	2.88	7.63	2.01	1.67	0.21	0.08	0.13	0.85	2.90	1.60	0.80	25.47
1990	7.20	4.50	3.30	1.41	3.74	0.32	0.22	0.71	0.19	1.73	3.07	2.95	29.34
1991	1.65	2.75	6.94	2.52	2.16	0.26	1.13	0.37	T	1.06	1.95	2.36	23.15
1992	3.99	3.80	3.51	2.42	0.06	1.27	0.25	0.01	0.33	2.08	2.21	9.33	29.26
1993	7.15	5.93	4.72	5.94	4.44	1.23	0.37	0.54	0.03	0.56	1.35	7.12	39.38
1994	5.09	7.12	2.06	3.30	1.10	0.71	0.08	T	0.06	0.54	8.21	7.00	35.27
1995	12.74	1.40	11.18	7.47	1.21	1.85	0.08	0.22	0.69	0.53	2.26	11.56	51.19
1996	10.74	8.11	3.51	4.64	2.40	0.05	0.03	T	1.21	3.50	5.16	21.26	60.61
1997	8.81	2.55	2.73	3.06	0.90	1.25	T	0.84	2.05	2.73	7.39	4.73	37.04
POR= 111 YRS	6.69	5.65	5.27	3.07	1.84	0.72	0.10	0.21	0.81	2.61	5.32	6.42	38.71

WBAN : 24213

AVERAGE TEMPERATURE (°F) 1997 EUREKA, CA (EKA)

YEAR	JAN	FEB	MAR	APR	MAY	JUN	JUL	AUG	SEP	OCT	NOV	DEC	ANNUAL
1968	46.6	53.2	50.6	48.1	52.4	55.5	56.3	59.3	57.5	53.3	51.8	46.5	52.6
1969	44.0	46.2	48.3	49.8	53.4	56.6	55.6	55.8	56.5	55.2	51.3	51.3	52.0
1970	52.1	51.4	49.9	47.4	52.3	54.3	54.8	55.3	55.7	52.6	53.5	47.4	52.2
1971	45.7	46.3	47.1	48.1	50.6	54.3	55.2	60.0	56.7	50.6	49.4	45.0	50.8
1972	44.6	49.0	51.2	49.1	51.2	54.6	57.8	58.2	55.8	54.2	51.8	45.7	51.9
1973	47.3	50.7	47.4	50.1	52.0	55.1	55.6	54.8	57.1	52.1	51.4	51.2	52.1
1974	46.7	46.1	50.1	49.7	51.1	54.1	57.7	57.7	55.6	53.2	51.2	48.7	51.8
1975	45.8	48.0	47.6	46.5	51.4	53.2	56.9	55.3	55.2	54.2	48.5	47.4	50.8
1976	46.4	46.9	45.7	48.4	51.1	52.8	57.5	57.9	56.2	54.4	52.2	47.4	51.4
1977	47.4	50.5	46.2	49.2	51.5	54.2	55.1	58.3	57.1	53.8	51.2	51.0	52.1
1978	51.8	50.3	53.5	51.0	53.3	56.0	55.9	57.0	57.6	54.9	48.0	43.3	52.7
1979	46.6	48.0	50.0	51.0	52.7	54.0	58.1	59.4	62.3	57.3	52.4	51.8	53.6
1980	48.3	53.5	48.6	51.9	52.3	55.5	57.3	55.0	56.6	54.3	51.3	51.2	53.0
1981	52.5	51.3	50.2	50.6	53.3	56.5	55.2	58.1	57.9	54.3	53.6	52.1	53.8
1982	44.9	49.5	48.3	50.8	52.8	56.3	58.3	59.6	58.7	57.3	52.1	49.6	53.2
1983	51.3	53.4	53.4	51.8	54.4	58.0	60.5	61.9	60.7	57.9	53.6	50.6	55.6
1984	49.4	50.0	52.8	51.3	55.0	55.2	57.6	60.2	58.3	55.3	52.1	46.8	53.7
1985	48.4	47.9	47.4	51.6	53.9	56.6	58.6	58.5	56.7	54.5	46.6	47.7	52.4
1986	54.3	52.7	53.1	50.7	53.9	59.0	57.4	57.2	57.2	55.6	53.5	51.3	54.7
1987	49.1	51.4	52.7	54.2	56.6	57.7	59.5	58.5	57.3	57.8	54.8	49.7	54.9
1988	50.4	50.2	50.3	52.8	56.3	57.7	58.8	57.7	55.8	55.2	53.3	47.7	53.9
1989	46.0	45.6	51.8	54.6	55.9	57.6	59.4	59.3	56.6	54.9	52.6	49.2	53.6
1990	48.3	45.5	50.2	52.8	54.0	58.2	59.8	60.4	61.6	54.3	49.7	42.8	53.1
1991	47.8	52.8	48.1	50.9	52.2	53.8	57.3	59.9	57.2	56.1	51.4	48.3	53.0
1992	50.3	53.9	54.1	56.4	56.7	58.3	60.6	59.1	57.5	58.0	51.7	46.9	55.3
1993	46.4	49.4	53.4	53.6	57.9	57.9	57.4	59.8	55.8	56.9	49.9	49.5	54.0
1994	50.5	48.5	51.1	52.8	55.5	57.0	57.1	61.4	59.6	54.4	45.6	46.7	53.4
1995	52.4	51.7	50.4	51.1	53.7	56.0	60.2	58.4	60.3	54.9	53.9	52.0	54.6
1996	49.5	52.3	50.7	52.9	53.7	55.5	57.4	58.1	55.8	54.5	51.3	50.9	53.6
1997	48.5	47.9	49.5	51.4	57.8	57.8	59.5	61.4	62.2	55.1	53.4	47.7	54.4
POR= 111 YRS	47.5	48.3	48.8	50.3	52.7	55.1	56.3	56.9	56.5	54.2	51.3	48.3	52.2

WBAN : 24213

HEATING DEGREE DAYS (base 65°F) 1997 EUREKA, CA (EKA)

YEAR	JUL	AUG	SEP	OCT	NOV	DEC	JAN	FEB	MAR	APR	MAY	JUN	TOTAL
1968-69	260	179	220	354	388	566	644	519	508	449	352	246	4685
1969-70	284	282	247	295	404	419	392	374	462	521	385	313	4378
1970-71	308	292	274	379	338	539	590	518	548	502	438	318	5044
1971-72	299	154	242	440	463	612	624	456	422	472	423	306	4913
1972-73	217	204	269	328	389	590	542	395	537	439	393	293	4596
1973-74	287	308	230	393	399	419	559	523	455	454	423	321	4771
1974-75	222	220	274	360	407	501	587	469	532	547	417	347	4883
1975-76	244	290	286	328	486	542	569	516	590	490	424	360	5125
1976-77	226	213	258	324	375	535	537	400	577	468	415	317	4645
1977-78	302	200	231	342	408	427	403	404	347	415	357	264	4100
1978-79	274	241	215	307	503	667	562	467	459	412	374	323	4804
1979-80	208	165	92	231	369	404	511	330	500	386	388	280	3864
1980-81	230	303	246	328	402	422	384	377	451	423	357	249	4172
1981-82	299	205	203	324	339	396	616	430	512	419	373	258	4374
1982-83	204	158	181	232	381	468	415	317	355	391	320	203	3625
1983-84	133	90	129	215	336	443	475	429	369	403	301	285	3608
1984-85	222	142	195	295	378	556	507	472	532	396	338	243	4276
1985-86	195	194	244	316	546	533	329	337	365	422	338	169	3988
1986-87	227	236	227	290	341	417	487	372	377	316	260	213	3763
1987-88	163	196	226	221	302	470	446	423	453	358	265	215	3738
1988-89	187	218	274	297	345	529	582	535	403	309	278	214	4171
1989-90	164	171	243	306	365	482	513	541	453	356	332	198	4124
1990-91	154	141	95	325	451	680	528	336	516	418	387	330	4361
1991-92	229	164	225	274	401	511	450	316	329	250	248	193	3590
1992-93	135	176	220	211	393	556	570	433	354	337	214	203	3802
1993-94	229	152	268	253	446	472	442	455	426	357	286	233	4019
1994-95	241	102	155	321	576	559	383	368	445	412	341	263	4166
1995-96	142	196	133	308	325	394	472	360	435	352	344	278	3739
1996-97	231	205	268	323	407	431	501	476	475	401	217	209	4144
1997-	163	106	82	300	341	529							

WBAN : 24213

COOLING DEGREE DAYS (base 65°F) 1997 EUREKA, CA (EKA)

YEAR	JAN	FEB	MAR	APR	MAY	JUN	JUL	AUG	SEP	OCT	NOV	DEC	ANNUAL
1969	0	0	0	0	0	0	0	0	0	0	0	0	0
1970	0	0	0	0	1	0	0	0	1	0	0	0	2
1971	0	0	0	0	0	0	0	2	0	0	0	0	2
1972	0	0	0	0	0	0	0	1	0	0	0	0	1
1973	0	0	0	0	0	1	0	0	0	0	0	0	1
1974	0	0	0	0	0	0	0	0	0	0	0	0	0
1975	0	0	0	0	0	0	0	0	0	0	0	0	0
1976	0	0	0	0	0	0	0	0	0	0	0	0	0
1977	0	0	0	0	0	0	0	0	0	0	0	0	0
1978	0	0	0	0	0	0	0	0	0	1	0	0	1
1979	0	0	0	0	0	0	0	0	15	0	0	2	17
1980	0	2	0	0	0	0	0	0	0	3	0	0	5
1981	4	0	0	0	0	0	0	0	0	0	0	0	4
1982	0	0	0	0	0	3	0	0	0	2	0	0	5
1983	0	0	0	0	0	0	0	2	7	0	0	0	9
1984	0	0	0	0	0	0	0	0	4	1	0	0	5
1985	0	0	0	0	0	0	1	0	0	2	0	0	3
1986	0	0	0	0	0	0	0	0	0	5	0	0	5
1987	0	0	0	0	3	0	0	0	0	5	0	0	8
1988	0	0	0	0	0	0	0	0	4	0	0	0	4
1989	0	0	0	1	0	0	0	0	0	0	0	0	1
1990	0	0	0	0	0	0	0	4	0	0	0	0	4
1991	0	0	0	0	0	0	0	10	0	4	0	0	14
1992	0	0	0	0	0	0	2	0	3	2	0	0	7
1993	0	3	0	0	3	0	0	0	0	8	0	0	14
1994	0	0	0	0	0	0	0	0	0	0	0	0	0
1995	0	0	0	0	0	0	0	0	0	0	0	0	0
1996	0	0	0	0	0	0	0	0	0	1	0	0	1
1997	0	0	1	0	4	0	0	3	5	0	0	0	13

SNOWFALL (inches) 1997 EUREKA, CA (EKA)

YEAR	JUL	AUG	SEP	OCT	NOV	DEC	JAN	FEB	MAR	APR	MAY	JUN	TOTAL
1970-71	0.0	0.0	0.0	0.0	0.0	0.0	T	T	0.0	0.0	0.0	0.0	T
1971-72	0.0	0.0	0.0	0.0	0.0	0.0	1.6	0.0	0.0	0.0	0.0	0.0	1.6
1972-73	0.0	0.0	0.0	0.0	0.0	1.9	0.0	0.0	T	0.0	0.0	0.0	1.9
1973-74	0.0	0.0	0.0	0.0	0.0	0.0	T	0.0	0.0	0.0	0.0	0.0	T
1974-75	0.0	0.0	0.0	0.0	0.0	T	0.0	0.0	0.0	T	0.0	0.0	T
1975-76	0.0	0.0	0.0	0.0	0.0	0.0	0.0	0.0	0.1	0.0	0.0	0.0	0.1
1976-77	0.0	0.0	0.0	0.0	0.0	0.0	0.0	0.0	T	0.0	0.0	0.0	T
1977-78	0.0	0.0	0.0	0.0	0.1	0.0	0.0	0.0	0.0	0.0	0.0	0.0	0.1
1978-79	0.0	0.0	0.0	0.0	0.0	0.0	0.0	0.0	0.0	0.0	0.0	0.0	0.0
1979-80	0.0	0.0	0.0	0.0	0.0	0.0	0.0	0.0	0.0	0.0	0.0	0.0	0.0
1980-81	0.0	0.0	0.0	0.0	0.0	0.0	0.0	0.0	0.0	0.0	0.0	0.0	0.0
1981-82	0.0	0.0	0.0	0.0	0.0	0.0	T	0.0	T	T	0.0	0.0	T
1982-83	0.0	0.0	0.0	0.0	0.0	0.0	T	0.0	0.0	T	0.0	0.0	T
1983-84	0.0	0.0	0.0	0.0	T	1.0	0.0	0.0	0.0	0.0	0.0	0.0	1.0
1984-85	0.0	0.0	0.0	0.0	0.0	0.0	0.0	0.0	0.0	0.0	0.0	0.0	0.0
1985-86	0.0	0.0	0.0	0.0	0.0	0.0	0.0	0.0	0.0	0.0	0.0	0.0	0.0
1986-87	0.0	0.0	0.0	0.0	0.0	0.0	0.0	0.0	0.0	0.0	0.0	0.0	0.0
1987-88	0.0	0.0	0.0	0.0	0.0	0.0	T	0.0	0.0	0.0	0.0	0.0	T
1988-89	0.0	0.0	0.0	0.0	0.0	T	0.0	3.5	0.0	0.0	0.0	0.0	3.5
1989-90	0.0	0.0	0.0	0.0	0.0	0.0	0.0	1.0	0.0	0.0	0.0	0.0	1.0
1990-91	0.0	0.0	0.0	0.0	0.0	T	0.0	0.0	T	0.0	0.0	0.0	T
1991-92	0.0	0.0	0.0	0.0	0.0	T	0.0	0.0	0.0	0.0	0.0	0.0	T
1992-93	0.0	0.0	0.0	0.0	0.0	T	0.0	T	0.0	T	0.0	0.0	T
1993-94	0.0	0.0	0.0	0.0	0.0	0.0	0.0	T	T	0.0	0.0	0.0	T
1994-95	0.0	0.0	0.0	0.0	T	0.0	0.0	0.0	T	T	0.0	0.0	T
1995-96	0.0	0.0	0.0	0.0	0.0	0.0	T	T	T	0.0	0.0	0.0	T
1996-97	0.0	0.0	0.0	0.0	0.0	0.0	T	0.0	T	0.0	0.0	0.0	T
1997-	0.0	0.0	0.0	0.0	0.0	0.0	0.0	0.0	0.0	0.0	0.0	0.0	0.0
POR= 86 YRS	0.0	0.0	0.0	0.0	0.0	0.0	0.1	0.1	0.0	T	0.0	0.0	0.2

WBAN : 24213

REFERENCE NOTES:

<p>PAGE 1: THE TEMPERATURE GRAPH SHOWS NORMAL MAXIMUM AND NORMAL MINIMUM DAILY TEMPERATURES (SOLID CURVES) AND THE ACTUAL DAILY HIGH AND LOW TEMPERATURES (VERTICAL BARS).</p> <p>PAGE 2 AND 3: H/C INDICATES HEATING AND COOLING DEGREE DAYS. RH INDICATES RELATIVE HUMIDITY W/O INDICATES WEATHER AND OBSTRUCTIONS S INDICATES SUNSHINE. PR INDICATES PRESSURE. CLOUDINESS ON PAGE 3 IS THE SUM OF THE CEILOMETER AND SATELLITE DATA NOT TO EXCEED EIGHT EIGHTHS(OKTAS).</p> <p>GENERAL: T INDICATES TRACE PRECIPITATION, AN AMOUNT GREATER THAN ZERO BUT LESS THAN THE LOWEST REPORTABLE VALUE. + INDICATES THE VALUE ALSO OCCURS ON EARLIER DATES. BLANK ENTRIES DENOTE MISSING OR UNREPORTED DATA. NORMALS ARE 30-YEAR AVERAGES (1961 - 1990). ASOS INDICATES AUTOMATED SURFACE OBSERVING SYSTEM. PM INDICATES THE LAST DAY OF THE PREVIOUS MONTH. POR (PERIOD OF RECORD) BEGINS WITH THE JANUARY DATA MONTH AND IS THE NUMBER OF YEARS USED TO COMPUTE THE MEAN. INDIVIDUAL MONTHS WITHIN THE POR MAY BE MISSING. WHEN THE POR FOR A NORMAL IS LESS THAN 30 YEARS, THE NORMAL IS PROVISIONAL AND IS BASED ON THE NUMBER OF YEARS INDICATED. 0.* OR * INDICATES THE VALUE OR MEAN-DAYS-WITH IS BETWEEN 0.00 AND 0.05. CLOUDINESS FOR ASOS STATIONS DIFFERS FROM THE NON-ASOS OBSERVATION TAKEN BY A HUMAN OBSERVER. ASOS STATION CLOUDINESS IS BASED ON TIME-AVERAGED CEILOMETER DATA FOR CLOUDS AT OR BELOW 12,000 FEET AND ON SATELLITE DATA FOR CLOUDS ABOVE 12,000 FEET. THE NUMBER OF DAYS WITH CLEAR, PARTLY CLOUDY, AND CLOUDY CONDITIONS FOR ASOS STATIONS IS THE SUM OF THE CEILOMETER AND SATELLITE DATA FOR THE SUNRISE TO SUNSET PERIOD.</p>	<p>GENERAL CONTINUED: CLEAR INDICATES 0 - 2 OKTAS, PARTLY CLOUDY INDICATES 3 - 6 OKTAS, AND CLOUDY INDICATES 7 OR 8 OKTAS. WHEN AT LEAST ONE OF THE ELEMENTS (CEILOMETER OR SATELLITE) IS MISSING, THE DAILY CLOUDINESS IS NOT COMPUTED. WIND DIRECTION IS RECORDED IN TENS OF DEGREES (2 DIGITS) CLOCKWISE FROM TRUE NORTH. "00" INDICATES CALM. "36" INDICATES TRUE NORTH. RESULTANT WIND IS THE VECTOR AVERAGE OF THE SPEED AND DIRECTION. AVERAGE TEMPERATURE IS THE SUM OF THE MEAN DAILY MAXIMUM AND MINIMUM TEMPERATURE DIVIDED BY 2. SNOWFALL DATA COMPRISE ALL FORMS OF FROZEN PRECIPITATION, INCLUDING HAIL. A HEATING (COOLING) DEGREE DAY IS THE DIFFERENCE BETWEEN THE AVERAGE DAILY TEMPERATURE AND 65° F. DRY BULB IS THE TEMPERATURE OF THE AMBIENT AIR. DEW POINT IS THE TEMPERATURE TO WHICH THE AIR MUST BE COOLED TO ACHIEVE 100 PERCENT RELATIVE HUMIDITY. WET BULB IS THE TEMPERATURE THE AIR WOULD HAVE IF THE MOISTURE CONTENT WAS INCREASED TO 100 PERCENT RELATIVE HUMIDITY.</p> <p>ON JULY 1, 1996, THE NATIONAL WEATHER SERVICE BEGAN USING THE "METAR" OBSERVATION CODE THAT WAS ALREADY EMPLOYED BY MOST OTHER NATIONS OF THE WORLD. THE MOST NOTICEABLE DIFFERENCE IN THIS ANNUAL PUBLICATION WILL BE THE CHANGE IN UNITS FROM TENTHS TO EIGHTHS(OKTAS) FOR REPORTING THE AMOUNT OF SKY COVER.</p>
---	---

1997
EUREKA,
CALIFORNIA (EKA)

Humboldt Bay is one-quarter mile north and one mile west of the station. There are no hills in Eureka of any consequence. The land slopes upward gently from the Bay toward the Coast Range, which begins about 3 miles east of the station and reaches the top of its first ridge approximately 10 miles to the east. The elevation of the ridge is 2,000 feet and extends in a semicircle from a point 20 miles north of Eureka to a point 25 miles south.

The climate of Eureka is completely maritime with high humidity prevailing the entire year. There are definite rainy and dry seasons. The rainy season begins in October and continues through April, accounting for about 90 percent of the annual precipitation. The dry season from May through September is marked by considerable fog or low cloudiness that usually clears in the late morning and sunny weather is generally the case during the early afternoon hours.

Temperatures are moderate the entire year. Although record highs have reached the mid 80s and record lows near 20 degrees, the usual yearly range is from lows in the mid 30s to highs in the mid 70s.

The principal industries are lumbering, fishing, tourism, and dairy farming. There is very little truck farming due to the low temperatures and lack of sunshine, however, the climate is nearly ideal for berries and flowers.

Based on the 1951-1980 period, the average first occurrence of 32 degrees Fahrenheit in the fall is December 10 and the average last occurrence in the spring is February 6.

STATION LOCATION

EUREKA, CALIFORNIA

LOCATION	OCCUPIED FROM	OCCUPIED TO	AIRLINE DISTANCES AND DIRECTIONS FROM PREVIOUS LOCATION	LATITUDE NORTH	LONGITUDE WEST	ELEVATION ABOVE											* Type	REMARKS	
						SEA LEVEL	GROUND												AUTOMATED
							WIND	EMERGENCY	EMERGENCY	EMERGENCY	EMERGENCY	EMERGENCY	EMERGENCY	EMERGENCY	EMERGENCY	EMERGENCY			
Buhne Building, 2nd & G Street	12/1/86	1/1/11	NA	40°48'	124°10'	28	60 a72 b78	65	65	NA	NA c54	NA	52	NA	NA	a - Effective 12/26/94. b - Effective 12/16/01. c - Installed 8/27/04.			
Post Office Building 5th & H Streets	1/1/11	Present	1000 ft. SSE	40°48'	124°10'	43	88 e88	72	72	Unk d65	65	NA	65	NA	NA	d - Effective 7/10/57. e - Type change 6/15/73.			

SUBSCRIPTION: Price and ordering information available through: National Climatic Data Center, Federal Building, Asheville, North Carolina 28801. INQUIRIES/COMMENTS CALL: (704) 271-4800

National Climatic Data Center
151 Patton Avenue, Rm 120
Asheville NC 28801-5001

OFFICIAL BUSINESS
PENALTY FOR PRIVATE USE \$300
FORWARD AND ADDRESS CORRECTION

FIRST CLASS
POSTAGE & FEES PAID
United States Department of Commerce
NOAA Permit No. G - 19